



eSmartCam

Quick Installation Guide

Shenzhen Elink Smart Co., Ltd.
www.elinksmart.com

I. Download and Install APP

eSmartCam APP support iPhone and Android phone.

1. iPhone

Please make sure that the iPhone system version is iOS 8.0 or above.

Enter the APP Store, search for "eSmartCam", or scan the following QR code.



APP Store

2. Android Phone

Please make sure your phone system is Android 4.0.3 or above.

Enter the "Google play", search for "eSmartCam", or scan the following QR code.



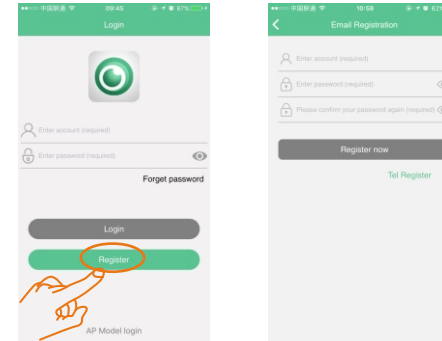
Google play

1

II. Connect Camera

1. APP User Registration

Open "eSmartCam" APP on the phone, and then click "Quick Registration" to enter "Quick Registration" interface. According to the prompts, create a new account or register by email, then enter password to finish registration.

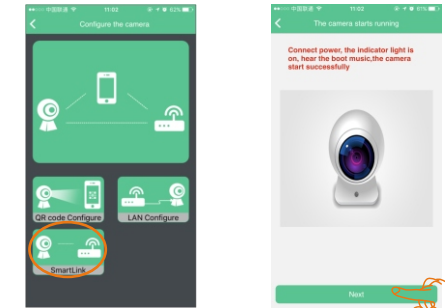


2

2. Add Camera

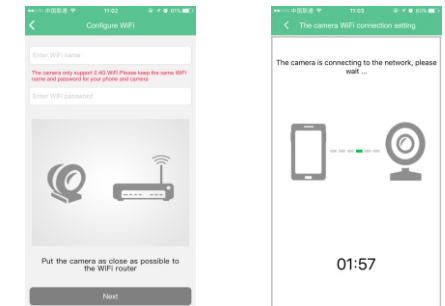
2.1 Smart Connection

Click "+" button, the interface will be shown as below, then select "Smart Config".



According to following page, input WiFi SSID and password, and then click "next", keep the phone close to the camera, and wait for a moment, until it shows bind successfully.

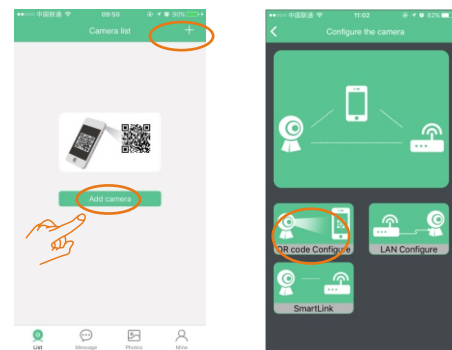
Note: please make sure the router band is 2.4G Wi-Fi.



3

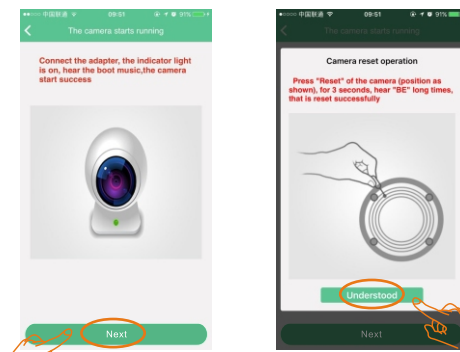
2.2 QR Connection

After a successful registration, check the status of the camera, open the application, you will see the following screen, and then follow below tips on the phone to operate:

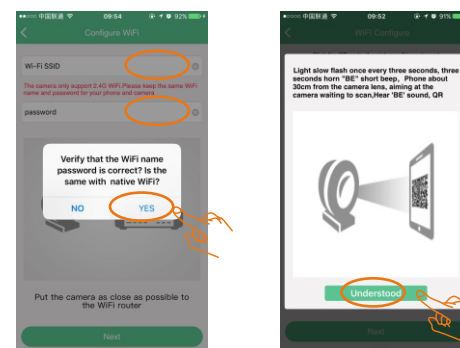


Please double check the camera status is correct or not, if not, please follow on the operation as below:

4

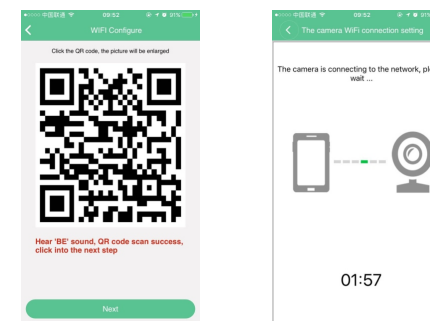


And then please enter WiFi SSID and password. Please ensure that the phone and camera connected to the same WiFi.

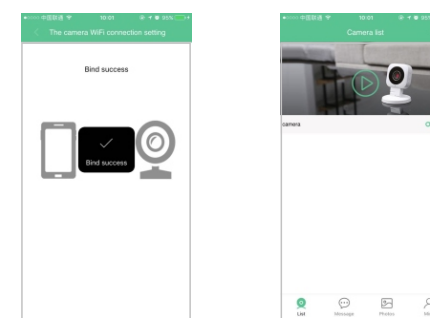


5

APP will generate a QR code, please keep the phone QR code face to camera within 30cm distance and scan it, after successful pairing, the camera will ring "Ding-dong".



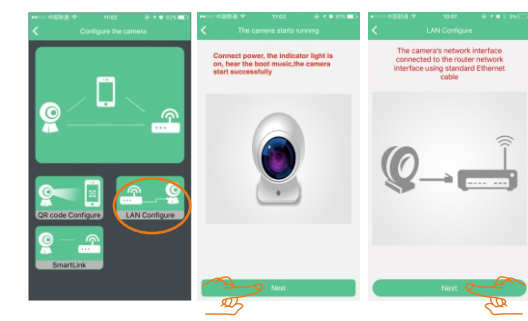
After implementation of above process, if the notification shows "Bind success", it means connection is successful, otherwise you need to reset the camera and connect it again.



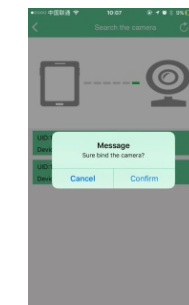
6

2.3 Wired Connection

Click "+" button and select "wired connection", as shown below:



And then it will search out all the IPCs in the LAN, click on one of the cameras to connect, the IPC will ring Ding-dong, then a prompt box will come out. Please confirm whether to bind the camera. Followed by this operation, until you find the right camera according to the sound, and click "OK" to bind the camera as shown below:



7

FCC Warning:

This device complies with part 15 of the FCC rules. Operation is subject to the following two conditions: (1) this device may not cause harmful interference, and (2) this device must accept any interference received, including interference that may cause undesired operation.

Changes or modifications not expressly approved by the party responsible for compliance could void the user's authority to operate the equipment.

NOTE: This equipment has been tested and found to comply with the limits for a Class B digital device, pursuant to part 15 of the FCC Rules. These limits are designed to provide reasonable protection against harmful interference in a residential installation. This equipment generates uses and can radiate radio frequency energy and, if not installed and used in accordance with the instructions, may cause harmful interference to radio communications. However, there is no guarantee that interference will not occur in a particular installation. If this equipment does cause harmful interference to radio or television reception, which can be determined by turning the equipment off and on, the user is encouraged to try to correct the interference by one or more of the following measures:

- 1 Reorient or relocate the receiving antenna.
- 2 Reorient or relocate the receiving antenna.
- 3 Reorient or relocate the receiving antenna.
- 4 Consult the dealer or an experienced radio/TV technician for help important announcements

Radiation Exposure Statement

This equipment complies with FCC radiation exposure limits set forth for an uncontrolled environment.

This equipment should be installed and operated with minimum distance 20cm between the radiator and your body.