

TEST REPORT

Product Name : Haylou-T19 True Wireless Earbuds
Brand Mark : Haylou
Model No. : Haylou-T19, Haylou-T19 (R)
FCC ID : 2AMQ6-T19R
Report Number : BLA-EMC-202004-A9702
Date of Sample Receipt : 2020/5/13
Date of Test : 2020/5/15 to 2020/5/22
Date of Issue : 2020/5/22
Test Standard : 47 CFR Part 15, Subpart C 15.247
Test Result : Pass

Prepared for:

Dongguan Liesheng Electronic Co., Ltd.
13/F,Project Phrase 2 of GaoshengTechTower,No.5,Longxi
Road,Nancheng,Dongguan,Guangdong,China

Prepared by:

BlueAsia of Technical Services(Shenzhen) Co.,Ltd.
IOT Test Centre of BlueAsia

No. 448 Bulong Road, Bantian Street, Longgang District, Shenzhen,China

TEL: +86-755-28682673

FAX: +86-755-28682673

Compiled by:

Jason

Review by:

Sweet. Liang

Approved by:

Jmen li

Date:

2020/5/22



REPORT REVISE RECORD

Version No.	Date	Description
00	2020/5/22	Original

BlueAsia

TABLE OF CONTENTS

1	TEST SUMMARY	6
2	GENERAL INFORMATION	7
3	GENERAL DESCRIPTION OF E.U.T.	7
4	TEST ENVIRONMENT	8
5	TEST MODE	8
6	MEASUREMENT UNCERTAINTY	8
7	DESCRIPTION OF SUPPORT UNIT.....	9
8	LABORATORY LOCATION.....	9
9	TEST INSTRUMENTS LIST	10
1	ANTENNA REQUIREMENT	14
1.1	CONCLUSION	14
2	CONDUCTED EMISSIONS AT AC POWER LINE (150KHZ-30MHZ).....	15
2.1	LIMITS	15
2.2	BLOCK DIAGRAM OF TEST SETUP	15
2.3	PROCEDURE	15
2.4	TEST DATA	17
3	RADIATED SPURIOUS EMISSIONS.....	19
3.1	LIMITS	19
3.2	BLOCK DIAGRAM OF TEST SETUP	20
3.3	PROCEDURE	20
3.4	TEST DATA	22
4	RADIATED EMISSIONS WHICH FALL IN THE RESTRICTED BANDS.....	27
4.1	LIMITS	27
4.2	BLOCK DIAGRAM OF TEST SETUP	28
4.3	PROCEDURE	28
4.4	TEST DATA	30
5	CONDUCTED SPURIOUS EMISSIONS	31
5.1	LIMITS	31
5.2	BLOCK DIAGRAM OF TEST SETUP	31
5.3	TEST DATA	33

6	CONDUCTED BAND EDGES MEASUREMENT	34
6.1	LIMITS	34
6.2	BLOCK DIAGRAM OF TEST SETUP	34
6.3	TEST DATA	35
7	DWELL TIME	36
7.1	LIMITS	36
7.2	BLOCK DIAGRAM OF TEST SETUP	36
7.3	TEST DATA	37
8	HOPPING CHANNEL NUMBER	38
8.1	LIMITS	38
8.2	BLOCK DIAGRAM OF TEST SETUP	38
8.3	TEST DATA	38
9	CARRIER FREQUENCIES SEPARATION	39
9.1	LIMITS	39
9.2	BLOCK DIAGRAM OF TEST SETUP	39
9.3	TEST DATA	39
10	20DB BANDWIDTH	40
10.1	BLOCK DIAGRAM OF TEST SETUP	40
10.2	TEST DATA.....	40
11	CONDUCTED PEAK OUTPUT POWER	41
11.1	LIMITS	41
11.2	BLOCK DIAGRAM OF TEST SETUP	41
11.3	TEST DATA.....	42
12	APPENDIX	43
12.1	APPENDIX :20DB EMISSION BANDWIDTH.....	43
	<i>Test Result</i>	43
	<i>Test Graphs</i>	44
12.2	APPENDIX : MAXIMUM CONDUCTED OUTPUT POWER	47
	<i>Test Result</i>	47
	<i>Test Graphs</i>	48
12.3	APPENDIX : CARRIER FREQUENCY SEPARATION	51
	<i>Test Result</i>	51
	<i>Test Graphs</i>	51

12.4	APPENDIX : TIME OF OCCUPANCY	53
	<i>Test Result</i>	53
	<i>Test Graphs</i>	54
12.5	APPENDIX : NUMBER OF HOPPING CHANNELS	57
	<i>Test Result</i>	57
	<i>Test Graphs</i>	57
12.6	APPENDIX : BAND EDGE MEASUREMENTS	59
	<i>Test Result</i>	59
	<i>Test Graphs</i>	60
12.7	APPENDIX : CONDUCTED SPURIOUS EMISSION.....	66
	<i>Test Result</i>	66
	<i>Test Graphs</i>	67
APPENDIX A: PHOTOGRAPHS OF TEST SETUP		76
APPENDIX B: PHOTOGRAPHS OF EUT		78

1 TEST SUMMARY

Test item	Test Requirement	Test Method	Class/Severity	Result
Antenna Requirement	47 CFR Part 15, Subpart C 15.247	N/A	47 CFR Part 15, Subpart C 15.203 & 15.247(c)	
Conducted Emissions at AC Power Line (150kHz-30MHz)	47 CFR Part 15, Subpart C 15.247	ANSI C63.10 (2013) Section 6.2	47 CFR Part 15, Subpart C 15.207	Pass
Radiated Spurious Emissions	47 CFR Part 15, Subpart C 15.247	ANSI C63.10 (2013) Section 6.4,6.5,6.6	47 CFR Part 15, Subpart C 15.209 & 15.247(d)	Pass
Radiated Emissions which fall in the restricted bands	47 CFR Part 15, Subpart C 15.247	ANSI C63.10 (2013) Section 6.10.5	47 CFR Part 15, Subpart C 15.209 & 15.247(d)	Pass
Conducted Spurious Emissions	47 CFR Part 15, Subpart C 15.247	ANSI C63.10 (2013) Section 7.8.6 & Section 11.11	47 CFR Part 15, Subpart C 15.247(d)	Pass
Conducted Band Edges Measurement	47 CFR Part 15, Subpart C 15.247	ANSI C63.10 (2013) Section 7.8.8 & Section 11.13.3.2	47 CFR Part 15, Subpart C 15.247(d)	Pass
Dwell Time	47 CFR Part 15, Subpart C 15.247	ANSI C63.10 (2013) Section 7.8.4	47 CFR Part 15, Subpart C 15.247a(1)(iii)	Pass
Hopping Channel Number	47 CFR Part 15, Subpart C 15.247	ANSI C63.10 (2013) Section 7.8.3	47 CFR Part 15, Subpart C 15.247a(1)(iii)	Pass
Carrier Frequencies Separation	47 CFR Part 15, Subpart C 15.247	ANSI C63.10 (2013) Section 7.8.2	47 CFR Part 15, Subpart C 15.247a(1)	Pass
20dB Bandwidth	47 CFR Part 15, Subpart C 15.247	ANSI C63.10 (2013) Section 7.8.7	47 CFR Part 15, Subpart C 15.247(a)(1)	Pass
Conducted Peak Output Power	47 CFR Part 15, Subpart C 15.247	ANSI C63.10 (2013) Section 7.8.5	47 CFR Part 15, Subpart C 15.247(b)(3)	Pass

2 GENERAL INFORMATION

Applicant	Dongguan Liesheng Electronic Co., Ltd.
Address	13/F,Project Phrase 2 of GaoshengTechTower,No.5,Longxi Road,Nancheng,Dongguan,Guangdong,China
Manufacturer	Dongguan Liesheng Electronic Co., Ltd.
Address	13/F,Project Phrase 2 of GaoshengTechTower,No.5,Longxi Road,Nancheng,Dongguan,Guangdong,China
Factory	N/A
Address	N/A
Product Name	Haylou-T19 True Wireless Earbuds
Test Model No.	Haylou-T19

3 GENERAL DESCRIPTION OF E.U.T.

Hardware Version	V1.0
Software Version	V1.0
Operation Frequency:	2402MHz-2480MHz
Modulation Type:	GFSK, p/4DQPSK, 8DPSK
Channel Spacing:	1MHz
Number of Channels:	79
Antenna Type:	Chip Antenna
Antenna Gain:	2.5

4 TEST ENVIRONMENT

Environment	Temperature	Voltage
Normal	25°C	DC3.7V

5 TEST MODE

TEST MODE	TEST MODE DESCRIPTION
Transmitting mode	Keep the EUT in continuously transmitting mode with modulation. (hopping or no hopping mode all have been tested, only worse case of non hopping mode is reported for radiated emission)
<p><i>Remark: During the test, the test voltage was tuned from 85% to 115% of the nominal rated supply voltage, and found that the worst case was under the nominal rated supply condition. So the report just shows that condition's data.</i></p> <p><i>Full battery is used during all test except ac conducted emission, DH1, DH3, DH5 all have been tested, during the test, GFSK, Pi/4QPSK, 8-DPSK modulation were all pre-scanned only worse case is reported.</i></p>	

6 MEASUREMENT UNCERTAINTY

Parameter	Expanded Uncertainty (Confidence of 95%)
Radiated Emission	±4.34dB
Radiated Emission	±4.24dB
Radiated Emission	±4.68dB
AC Power Line Conducted Emission	±3.45dB

Parameter	Expanded Uncertainty (Confidence of 95%)
Occupied Channel Bandwidth	±5 %
RF output power, conducted	±1.5 dB
Power Spectral Density, conducted	±3.0 dB
Unwanted Emissions, conducted	±3.0 dB
Temperature	±3 °C
Supply voltages	±3 %
Time	±5 %
Radiated Emission (30MHz ~ 1000MHz)	±4.35 dB
Radiated Emission (1GHz ~ 18GHz)	±4.44 dB

7 DESCRIPTION OF SUPPORT UNIT

Device Type	Manufacturer	Model Name	Serial No.	Remark
--	--	--	--	--

Note:

"--" means no any support device during testing.

8 LABORATORY LOCATION

All tests were performed at:
BlueAsia of Technical Services(Shenzhen) Co., Ltd.
IOT Test Centre of BlueAsia
No. 448 Bulong Road, Bantian Street, Longgang District, Shenzhen,China
Telephone: TEL: +86-755-28682673 FAX: +86-755-28682673
No tests were sub-contracted.

9 TEST INSTRUMENTS LIST

Test Equipment Of Conducted Emissions at AC Power Line (150kHz-30MHz)					
Equipment	Manufacturer	Model	S/N	Cal.Date	Cal.Due
Shield room	SKET	833	N/A	6/10/2018	6/9/2021
Receiver	R&S	ESPI3	101082	4/20/2020	4/19/2021
LISN	R&S	ENV216	3560.6550.15	7/4/2019	7/3/2020
LISN	AT	AT166-2	AKK1806000003	12/17/2019	12/16/2020
EMI software	EZ	EZ-EMC	N/A	N/A	N/A

Test Equipment Of Radiated Spurious Emissions					
Equipment	Manufacturer	Model	S/N	Cal.Date	Cal.Due
Chamber	SKET	966	N/A	5/8/2018	5/7/2021
Spectrum	R&S	FSP40	100817	7/4/2019	7/3/2020
Receiver	R&S	ESR7	101199	4/20/2020	4/19/2021
broadband Antenna	Schwarzbeck	VULB9168	00836 P:00227	7/14/2018	7/13/2020
Horn Antenna	Schwarzbeck	9120D	01892 P:00331	7/14/2018	7/13/2020
Amplifier	SKET	LNPA-0118-45	N/A	7/4/2019	7/3/2020
EMI software	EZ	EZ-EMC	N/A	N/A	N/A
Loop antenna	SCHNARZBECK	FMZB1519B	00102	2/14/2019	2/13/2022
Controller	SKET	N/A	N/A	N/A	N/A
Coaxial Cable	BlueAsia	BLA-XC-02	N/A	N/A	N/A
Coaxial Cable	BlueAsia	BLA-XC-03	N/A	N/A	N/A
Coaxial Cable	BlueAsia	BLA-XC-01	N/A	N/A	N/A

Test Equipment Of Radiated Emissions which fall in the restricted bands					
Equipment	Manufacturer	Model	S/N	Cal.Date	Cal.Due
Chamber	SKET	966	N/A	5/8/2018	5/7/2021
Spectrum	R&S	FSP40	100817	7/4/2019	7/3/2020
Receiver	R&S	ESR7	101199	4/20/2020	4/19/2021
broadband Antenna	Schwarzbeck	VULB9168	00836 P:00227	7/14/2018	7/13/2020
Horn Antenna	Schwarzbeck	9120D	01892 P:00331	7/14/2018	7/13/2020
Amplifier	SKET	LNPA-0118-45	N/A	7/4/2019	7/3/2020
EMI software	EZ	EZ-EMC	N/A	N/A	N/A
Loop antenna	SCHNARZBECK	FMZB1519B	00102	2/14/2019	2/13/2022
Controller	SKET	N/A	N/A	N/A	N/A
Coaxial Cable	BlueAsia	BLA-XC-02	N/A	N/A	N/A
Coaxial Cable	BlueAsia	BLA-XC-03	N/A	N/A	N/A
Coaxial Cable	BlueAsia	BLA-XC-01	N/A	N/A	N/A

Test Equipment Of Conducted Spurious Emissions					
Equipment	Manufacturer	Model	S/N	Cal.Date	Cal.Due
Spectrum	R&S	FSP40	100817	7/4/2019	7/3/2020
Spectrum	Agilent	N9020A	MY49100060	12/17/2019	12/16/2020
Signal Generator	Agilent	N5182A	MY49060650	12/17/2019	12/16/2020
Signal Generator	Agilent	E8257D	MY44320250	4/20/2020	4/19/2021

Test Equipment Of Conducted Band Edges Measurement

Equipment	Manufacturer	Model	S/N	Cal.Date	Cal.Due
Spectrum	R&S	FSP40	100817	7/4/2019	7/3/2020
Spectrum	Agilent	N9020A	MY49100060	12/17/2019	12/16/2020
Signal Generator	Agilent	N5182A	MY49060650	12/17/2019	12/16/2020
Signal Generator	Agilent	E8257D	MY44320250	4/20/2020	4/19/2021

Test Equipment Of Dwell Time

Equipment	Manufacturer	Model	S/N	Cal.Date	Cal.Due
Spectrum	R&S	FSP40	100817	7/4/2019	7/3/2020
Spectrum	Agilent	N9020A	MY49100060	12/17/2019	12/16/2020
Signal Generator	Agilent	N5182A	MY49060650	12/17/2019	12/16/2020
Signal Generator	Agilent	E8257D	MY44320250	4/20/2020	4/19/2021

Test Equipment Of Hopping Channel Number

Equipment	Manufacturer	Model	S/N	Cal.Date	Cal.Due
Spectrum	R&S	FSP40	100817	7/4/2019	7/3/2020
Spectrum	Agilent	N9020A	MY49100060	12/17/2019	12/16/2020
Signal Generator	Agilent	N5182A	MY49060650	12/17/2019	12/16/2020
Signal Generator	Agilent	E8257D	MY44320250	4/20/2020	4/19/2021

Test Equipment Of Carrier Frequencies Separation					
Equipment	Manufacturer	Model	S/N	Cal.Date	Cal.Due
Spectrum	R&S	FSP40	100817	7/4/2019	7/3/2020
Spectrum	Agilent	N9020A	MY49100060	12/17/2019	12/16/2020
Signal Generator	Agilent	N5182A	MY49060650	12/17/2019	12/16/2020
Signal Generator	Agilent	E8257D	MY44320250	4/20/2020	4/19/2021

Test Equipment Of 20dB Bandwidth					
Equipment	Manufacturer	Model	S/N	Cal.Date	Cal.Due
Spectrum	R&S	FSP40	100817	7/4/2019	7/3/2020
Spectrum	Agilent	N9020A	MY49100060	12/17/2019	12/16/2020
Signal Generator	Agilent	N5182A	MY49060650	12/17/2019	12/16/2020
Signal Generator	Agilent	E8257D	MY44320250	4/20/2020	4/19/2021

Test Equipment Of Conducted Peak Output Power					
Equipment	Manufacturer	Model	S/N	Cal.Date	Cal.Due
Spectrum	R&S	FSP40	100817	7/4/2019	7/3/2020
Spectrum	Agilent	N9020A	MY49100060	12/17/2019	12/16/2020
Signal Generator	Agilent	N5182A	MY49060650	12/17/2019	12/16/2020
Signal Generator	Agilent	E8257D	MY44320250	4/20/2020	4/19/2021

1 ANTENNA REQUIREMENT

Test Standard	47 CFR Part 15, Subpart C 15.247
Test Method	N/A

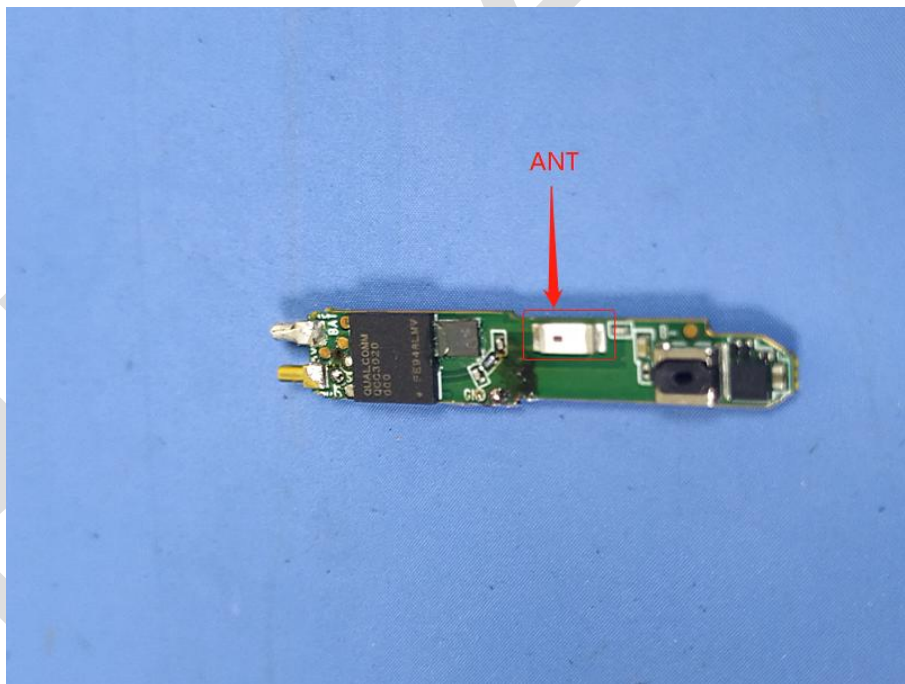
1.1 CONCLUSION

Standard Requirement:

An intentional radiator shall be designed to ensure that no antenna other than that furnished by the responsible party shall be used with the device. The use of an antenna that uses a unique coupling to the intentional radiator, the manufacturer may design the unit permanently attached antenna or of an so that a broken antenna can be replaced by the user, but the use of a standard antenna jack or electrical connector is prohibited.

EUT Antenna:

The antenna is integrated on the main PCB and no consideration of replacement. The best case gain of the antenna is 2.5dBi.



2 CONDUCTED EMISSIONS AT AC POWER LINE (150KHZ-30MHZ)

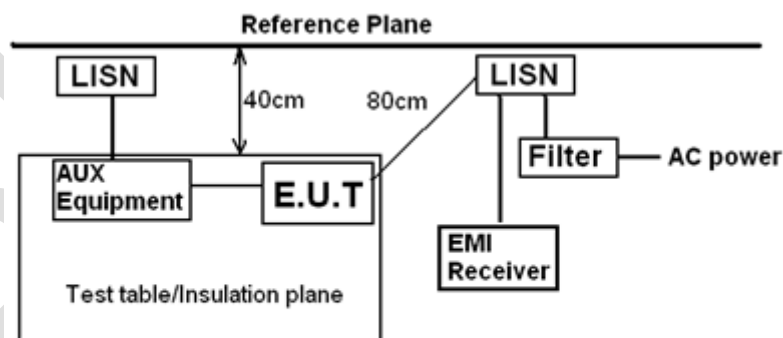
Test Standard	47 CFR Part 15, Subpart C 15.247
Test Method	ANSI C63.10 (2013) Section 6.2
Test Mode (Pre-Scan)	TX
Test Mode (Final Test)	TX
Tester	Eason
Temperature	25°C
Humidity	60%

2.1 LIMITS

Frequency of emission(MHz)	Conducted limit(dB μ V)	
	Quasi-peak	Average
0.15-0.5	66 to 56*	56 to 46*
0.5-5	56	46
5-30	60	50

*Decreases with the logarithm of the frequency.

2.2 BLOCK DIAGRAM OF TEST SETUP



Remark
 E.U.T: Equipment Under Test
 LISN: Line Impedance Stabilization Network
 Test table height=0.8m

2.3 PROCEDURE

- 1) The mains terminal disturbance voltage test was conducted in a shielded room.
- 2) The EUT was connected to AC power source through a LISN 1 (Line Impedance Stabilization Network) which provides a 50ohm/50 μ H + 5ohm linear impedance. The power cables of all other units of the EUT were connected to a second LISN 2, which was bonded to the ground reference plane in the same way as

the LISN 1 for the unit being measured. A multiple socket outlet strip was used to connect multiple power cables to a single LISN provided the rating of the LISN was not exceeded.

3) The tabletop EUT was placed upon a non-metallic table 0.8m above the ground reference plane. And for floor-standing arrangement, the EUT was placed on the horizontal ground reference plane,

4) The test was performed with a vertical ground reference plane. The rear of the EUT shall be 0.4 m from the vertical ground reference plane. The vertical ground reference plane was bonded to the horizontal ground reference plane. The LISN 1 was placed 0.8 m from the boundary of the unit under test and bonded to a ground reference plane for LISNs mounted on top of the ground reference plane. This distance was between the closest points of the LISN 1 and the EUT. All other units of the EUT and associated equipment was at least 0.8 m from the LISN 2.

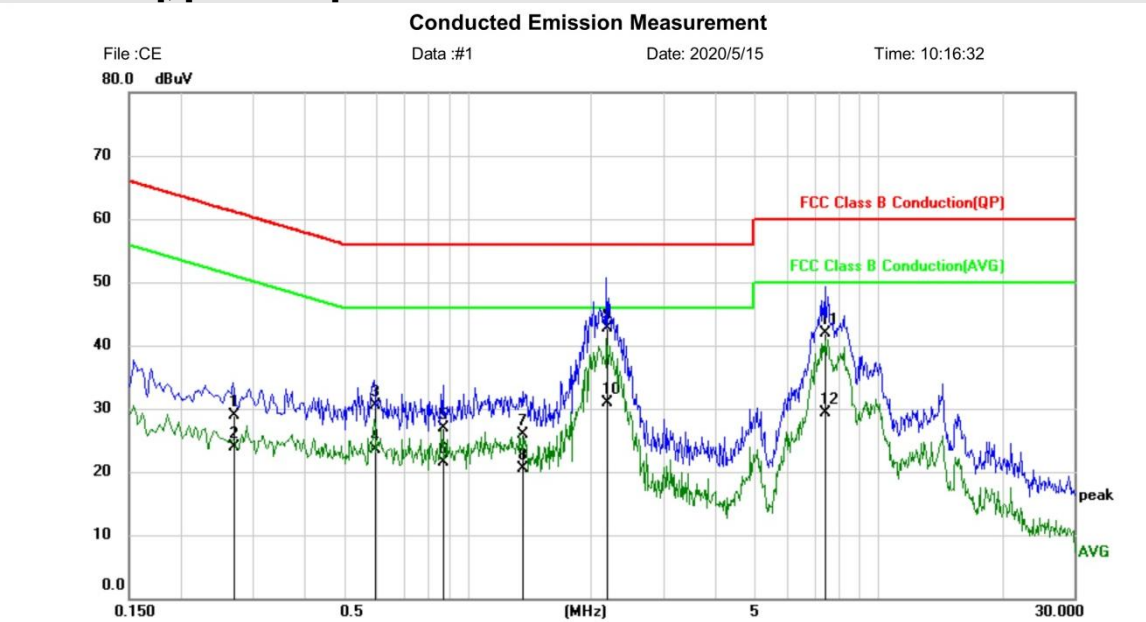
5) In order to find the maximum emission, the relative positions of equipment and all of the interface cables must be changed according to ANSI C63.10 on conducted measurement.

Remark: LISN=Read Level+ Cable Loss+ LISN Factor

BlueAsia

2.4 TEST DATA

[TestMode: TX]; [Line: Line]



Site	Phase: L1	Temperature: 26
Limit: FCC Class B Conduction(QP)	Power: AC 120V 60Hz	Humidity: 60 %
EUT: TWS Bluetooth earphones		
M/N: Haylou-T19		
Mode: BT mode		
Note:		

No. Mk.	Freq. MHz	Reading Level dBuV	Correct Factor dB	Measure- ment dBuV	Limit dBuV	Over dB	Detector	Comment
1	0.2700	19.05	9.88	28.93	61.12	-32.19	QP	
2	0.2700	14.09	9.88	23.97	51.12	-27.15	AVG	
3	0.5940	20.74	9.74	30.48	56.00	-25.52	QP	
4	0.5940	13.84	9.74	23.58	46.00	-22.42	AVG	
5	0.8740	17.21	9.74	26.95	56.00	-29.05	QP	
6	0.8740	11.78	9.74	21.52	46.00	-24.48	AVG	
7	1.3660	16.07	9.83	25.90	56.00	-30.10	QP	
8	1.3660	10.65	9.83	20.48	46.00	-25.52	AVG	
9 *	2.1860	32.91	9.82	42.73	56.00	-13.27	QP	
10	2.1860	21.00	9.82	30.82	46.00	-15.18	AVG	
11	7.4300	31.95	9.87	41.82	60.00	-18.18	QP	
12	7.4300	19.45	9.87	29.32	50.00	-20.68	AVG	

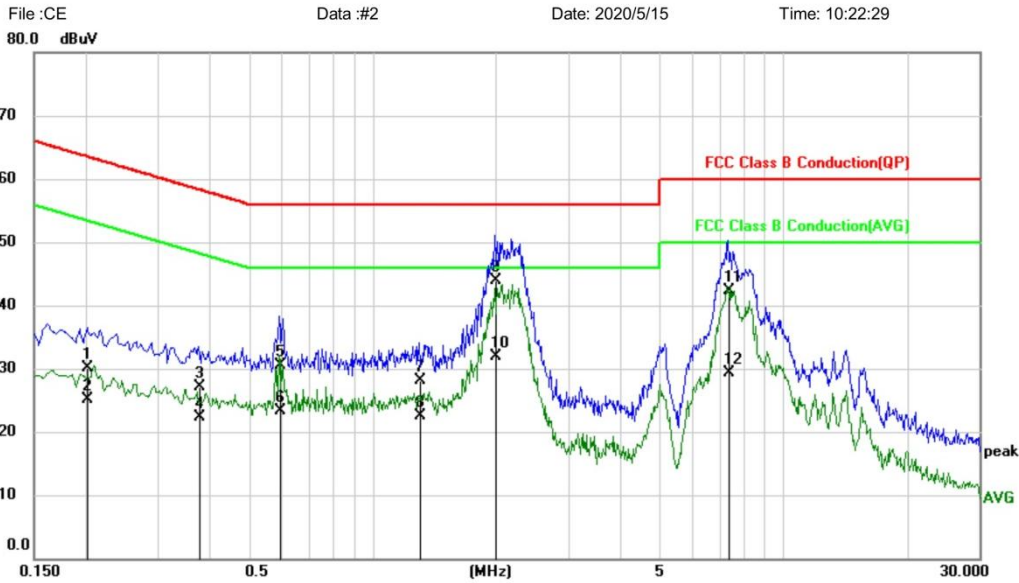
*:Maximum data x:Over limit !:over margin

(Reference Only)

Test Result: Pass

[TestMode:TX]; [Line: Neutral]

Conducted Emission Measurement



Site: Phase: **N** Temperature: 26

Limit: FCC Class B Conduction(QP) Power: AC 120V 60Hz Humidity: 60 %

EUT: TWS Bluetooth earphones

M/N: Haylou-T19

Mode: BT mode

Note:

No.	Mk.	Freq.	Reading Level	Correct Factor	Measurement	Limit	Over	Detector	Comment
		MHz	dBuV	dB	dBuV	dBuV	dB		
1		0.2020	20.15	9.89	30.04	63.53	-33.49	QP	
2		0.2020	15.25	9.89	25.14	53.53	-28.39	AVG	
3		0.3780	17.47	9.73	27.20	58.32	-31.12	QP	
4		0.3780	12.62	9.73	22.35	48.32	-25.97	AVG	
5		0.5940	20.73	9.74	30.47	56.00	-25.53	QP	
6		0.5940	13.53	9.74	23.27	46.00	-22.73	AVG	
7		1.3020	18.22	9.83	28.05	56.00	-27.95	QP	
8		1.3020	12.77	9.83	22.60	46.00	-23.40	AVG	
9	*	1.9900	34.13	9.86	43.99	56.00	-12.01	QP	
10		1.9900	21.97	9.86	31.83	46.00	-14.17	AVG	
11		7.3540	32.42	9.85	42.27	60.00	-17.73	QP	
12		7.3540	19.40	9.85	29.25	50.00	-20.75	AVG	

*:Maximum data x:Over limit !:over margin

(Reference Only)

Test Result: Pass

3 RADIATED SPURIOUS EMISSIONS

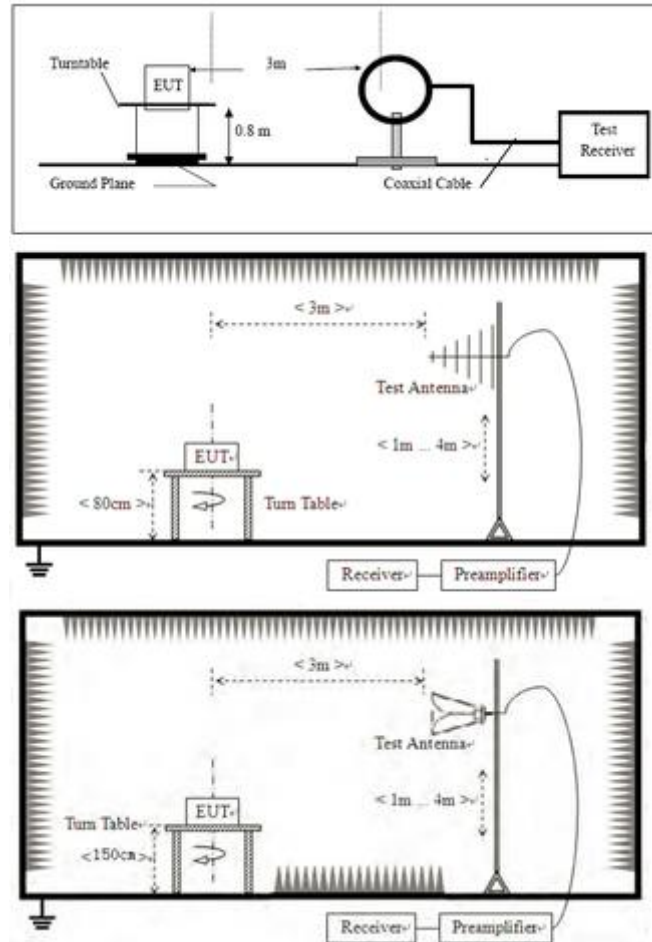
Test Standard	47 CFR Part 15, Subpart C 15.247
Test Method	ANSI C63.10 (2013) Section 6.4,6.5,6.6
Test Mode (Pre-Scan)	TX;TX mode (SE) below 1G
Test Mode (Final Test)	TX;TX mode (SE) below 1G
Tester	Eason
Temperature	25°C
Humidity	55%

3.1 LIMITS

Frequency(MHz)	Field strength(microvolts/meter)	Measurement distance(meters)
0.009-0.490	2400/F(kHz)	300
0.490-1.705	24000/F(kHz)	30
1.705-30.0	30	30
30-88	100	3
88-216	150	3
216-960	200	3
Above 960	500	3

Remark: The emission limits shown in the above table are based on measurements employing a CISPR quasi-peak detector except for the frequency bands 9-90kHz, 110-490kHz and above 1000 MHz. Radiated emission limits in these three bands are based on measurements employing an average detector, the peak field strength of any emission shall not exceed the maximum permitted average limits specified above by more than 20 dB under any condition of modulation.

3.2 BLOCK DIAGRAM OF TEST SETUP



3.3 PROCEDURE

- For below 1GHz, the EUT was placed on the top of a rotating table 0.8 meters above the ground at a 3 or 10 meter semi-anechoic chamber. The table was rotated 360 degrees to determine the position of the highest radiation.
- For above 1GHz, the EUT was placed on the top of a rotating table 1.5 meters above the ground at a 3 meter fully-anechoic chamber. The table was rotated 360 degrees to determine the position of the highest radiation.
- The EUT was set 3 or 10 meters away from the interference-receiving antenna, which was mounted on the top of a variable-height antenna tower.
- The antenna height is varied from one meter to four meters above the ground to determine the maximum value of the field strength. Both horizontal and vertical polarizations of the antenna are set to make the measurement.
- For each suspected emission, the EUT was arranged to its worst case and then the antenna was tuned to heights from 1 meter to 4 meters (for the test frequency of below 30MHz, the antenna was tuned to heights 1 meter) and the rotatable table was turned from 0 degrees to 360 degrees to find the maximum reading.
- The test-receiver system was set to Peak Detect Function and Specified Bandwidth with Maximum Hold Mode.
- If the emission level of the EUT in peak mode was 10dB lower than the limit specified, then testing could be stopped and the peak values of the EUT would be reported. Otherwise the emissions that did not have 10dB margin would be re-tested one by one using peak, quasi-peak or average method as specified and then reported in a data sheet.

- h. Test the EUT in the lowest channel, the middle channel, the Highest channel.
- i. The radiation measurements are performed in X, Y, Z axis positioning for Transmitting mode, and found the X axis positioning which it is the worst case.
- j. Repeat above procedures until all frequencies measured was complete.

Remark:

- 1) For emission below 1GHz, through pre-scan found the worst case is the lowest channel. Only the worst case is recorded in the report.
- 2) The field strength is calculated by adding the Antenna Factor, Cable Factor & Preamplifier. The basic equation with a sample calculation is as follows:
Final Test Level = Receiver Reading + Antenna Factor + Cable Factor + Preamplifier Factor
- 3) Scan from 9kHz to 25GHz, the disturbance above 18GHz and below 30MHz was very low. The points marked on above plots are the highest emissions could be found when testing, so only above points had been displayed. The amplitude of spurious emissions from the radiator which are attenuated more than 20dB below the limit need not be reported.
- 4) For frequencies above 1GHz, the field strength limits are based on average limits. However, the peak field strength of any emission shall not exceed the maximum permitted average limits specified above by more than 20 dB under any condition of modulation. For the emissions whose peak level is lower than the average limit, only the peak measurement is shown in the report.

3.4 TEST DATA

Remark:

During the test, pre-scan the GFSK, Pi/4QPSK, 8-DPSK modulation, and found the GFSK modulation which it is worse case.

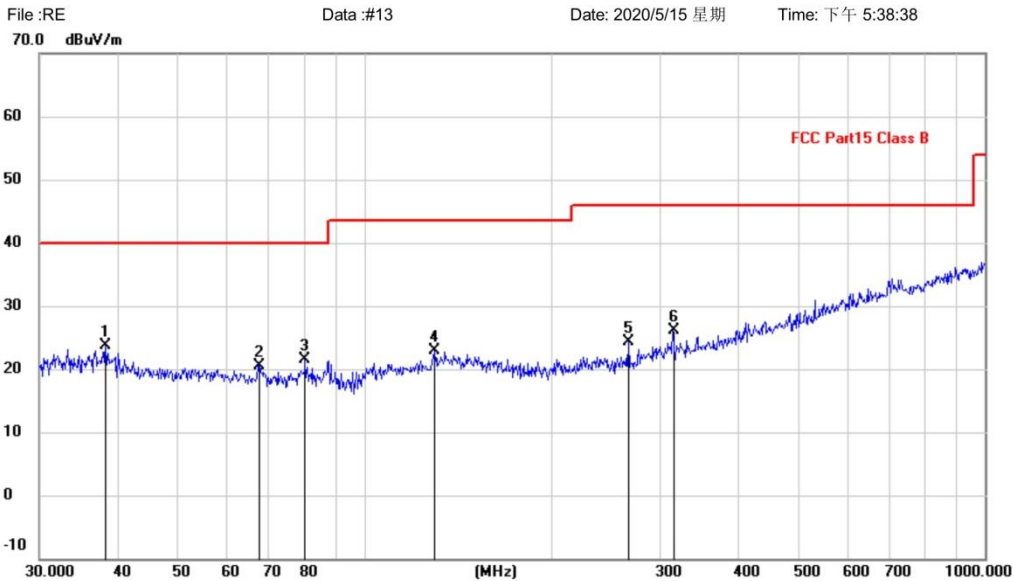
[TestMode: TX]						
Test channel:lowest						
Peak value:						
Frequency (MHz)	Read Level (dBuV)	Correct factor	Level (dBuV/m)	Limit Line (dBuV/m)	Over Limit (dB)	Polarization
4804.00	61.76	2.38	64.14	74	-9.86	Vertical
7206.00	59.03	2.17	61.2	74	-12.8	Vertical
9608.00	59.06	2.06	61.12	74	-12.88	Vertical
12010.00	*			74		Vertical
14412.00	*			74		Vertical
4804.00	59.91	2.38	62.29	74	-11.71	Horizontal
7206.00	60.42	2.17	62.59	74	-11.41	Horizontal
9608.00	60.56	2.06	62.62	74	-11.38	Horizontal
12010.00	*			74		Horizontal
14412.00	*			74		Horizontal
Average value:						
Frequency (MHz)	Read Level (dBuV)	Correct factor	Level (dBuV/m)	Limit Line (dBuV/m)	Over Limit (dB)	Polarization
4804.00	41.15	2.38	43.53	54	-10.47	Vertical
7206.00	38.55	2.17	40.72	54	-13.28	Vertical
9608.00	41.67	2.06	43.73	54	-10.27	Vertical
12010.00	*			54		Vertical
14412.00	*			54		Vertical
4804.00	41.85	2.38	44.23	54	-9.77	Horizontal
7206.00	39.93	2.17	42.1	54	-11.9	Horizontal
9608.00	41.45	2.06	43.51	54	-10.49	Horizontal
12010.00	*			54		Horizontal
14412.00	*			54		Horizontal

Test channel:Middle						
Peak value:						
Frequency (MHz)	Read Level (dBuV)	Correct factor	Level (dBuV/m)	Limit Line (dBuV/m)	Over Limit (dB)	Polarization
4882.00	58.33	0.17	58.5	74	-15.5	Vertical
7323.00	61.73	1.43	63.16	74	-10.84	Vertical
9764.00	60.37	1.26	61.63	74	-12.37	Vertical
12205.00	*			74		Vertical
14646.00	*			74		Vertical
4882.00	59.13	0.17	59.3	74	-14.7	Horizontal
7323.00	59.79	1.43	61.22	74	-12.78	Horizontal
9764.00	58.29	1.26	59.55	74	-14.45	Horizontal
12205.00	*			74		Horizontal
14646.00	*			74		Horizontal
Average value:						
Frequency (MHz)	Read Level (dBuV)	Correct factor	Level (dBuV/m)	Limit Line (dBuV/m)	Over Limit (dB)	Polarization
4882.00	40.23	0.17	40.4	54	-13.6	Vertical
7323.00	39.88	1.43	41.31	54	-12.69	Vertical
9764.00	39.35	1.26	40.61	54	-13.39	Vertical
12205.00	*			54		Vertical
14646.00	*			54		Vertical
4882.00	41.68	0.17	41.85	54	-12.15	Horizontal
7323.00	41.13	1.43	42.56	54	-11.44	Horizontal
9764.00	38.31	1.26	39.57	54	-14.43	Horizontal
12205.00	*			54		Horizontal
14646.00	*			54		Horizontal

Test channel: Highest						
Peak value:						
Frequency (MHz)	Read Level (dBuV)	Correct factor	Level (dBuV/m)	Limit Line (dBuV/m)	Over Limit (dB)	Polarization
4960.00	61.41	1.04	62.45	74	-11.55	Vertical
7440.00	60.43	2.59	63.02	74	-10.98	Vertical
9920.00	61.51	2.74	64.25	74	-9.75	Vertical
12400.00	*			74		Vertical
14880.00	*			74		Vertical
4960.00	58.42	1.04	59.46	74	-14.54	Horizontal
7440.00	59.84	2.59	62.43	74	-11.57	Horizontal
9920.00	61.17	2.74	63.91	74	-10.09	Horizontal
12400.00	*			74		Horizontal
14880.00	*			74		Horizontal
Average value:						
Frequency (MHz)	Read Level (dBuV)	Correct factor	Level (dBuV/m)	Limit Line (dBuV/m)	Over Limit (dB)	Polarization
4960.00	38.61	1.04	39.65	54	-14.35	Vertical
7440.00	40.34	2.59	42.93	54	-11.07	Vertical
9920.00	38.22	2.74	40.96	54	-13.04	Vertical
12400.00	*			54		Vertical
14880.00	*			54		Vertical
4960.00	39.71	1.04	40.75	54	-13.25	Horizontal
7440.00	38.84	2.59	41.43	54	-12.57	Horizontal
9920.00	40.69	2.74	43.43	54	-10.57	Horizontal
12400.00	*			54		Horizontal
14880.00	*			54		Horizontal
Test Result: Pass						

[TestMode: TX mode (SE) below 1G]; [Polarity: Horizontal]

Radiated Emission Measurement



Site	Polarization: Horizontal	Temperature:
Limit: FCC Part15 Class B	Power:	Humidity: %
EUT: TWS Bluetooth earphones	Distance:	
M/N: Haylou-T19		
Mode: BT mode		
Note:		

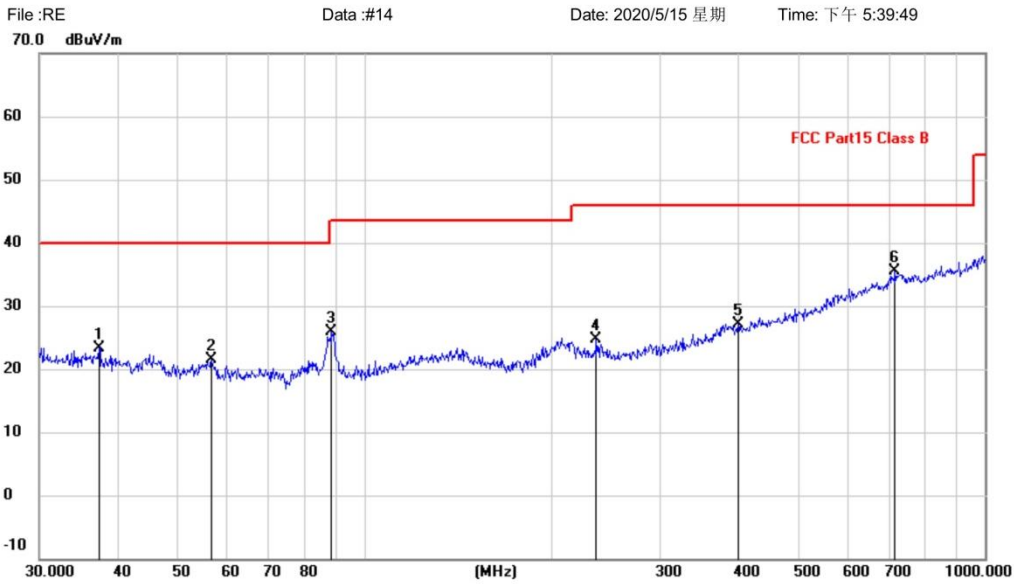
No.	Mk.	Freq.	Reading Level	Correct Factor	Measurement	Limit	Over	Antenna Height	Table Degree	
		MHz	dBuV	dB	dBuV/m	dBuV/m	dB	cm	degree	Comment
1	*	38.3462	-0.31	23.93	23.62	40.00	-16.38	QP		
2		67.9128	-1.04	21.64	20.60	40.00	-19.40	QP		
3		80.3619	2.44	19.10	21.54	40.00	-18.46	QP		
4		129.9225	0.01	22.99	23.00	43.50	-20.50	QP		
5		266.6089	1.30	23.07	24.37	46.00	-21.63	QP		
6		314.3765	1.85	24.26	26.11	46.00	-19.89	QP		

*:Maximum data x:Over limit !:over margin <Reference Only

Test Result: Pass

[TestMode: TX mode (SE) below 1G]; [Polarity: Vertical]

Radiated Emission Measurement



Site	Polarization: Vertical	Temperature:
Limit: FCC Part15 Class B	Power:	Humidity: %
EUT: TWS Bluetooth earphones	Distance:	
M/N: Haylou-T19		
Mode: BT mode		
Note:		

No.	Mk.	Freq.	Reading Level	Correct Factor	Measurement	Limit	Over	Antenna Height	Table Degree	
		MHz	dBuV	dB	dBuV/m	dBuV/m	dB	cm	degree	Comment
1		37.4164	-0.47	23.72	23.25	40.00	-16.75			QP
2		56.7916	-2.26	23.73	21.47	40.00	-18.53			QP
3		88.6524	6.42	19.51	25.93	43.50	-17.57			QP
4		236.6447	2.00	22.78	24.78	46.00	-21.22			QP
5		400.4318	0.15	27.01	27.16	46.00	-18.84			QP
6	*	716.6820	2.52	32.98	35.50	46.00	-10.50			QP

*:Maximum data x:Over limit !:over margin <Reference Only

Test Result: Pass

4 RADIATED EMISSIONS WHICH FALL IN THE RESTRICTED BANDS

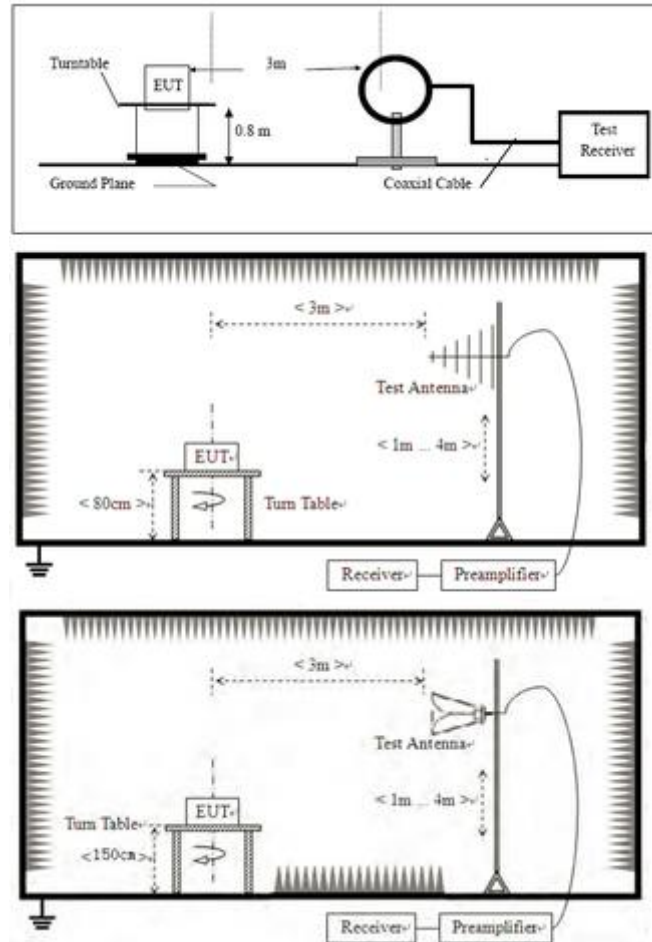
Test Standard	47 CFR Part 15, Subpart C 15.247
Test Method	ANSI C63.10 (2013) Section 6.10.5
Test Mode (Pre-Scan)	TX
Test Mode (Final Test)	TX
Tester	Eason
Temperature	25°C
Humidity	55%

4.1 LIMITS

Frequency(MHz)	Field strength(microvolts/meter)	Measurement distance(meters)
0.009-0.490	2400/F(kHz)	300
0.490-1.705	24000/F(kHz)	30
1.705-30.0	30	30
30-88	100	3
88-216	150	3
216-960	200	3
Above 960	500	3

Remark: The emission limits shown in the above table are based on measurements employing a CISPR quasi-peak detector except for the frequency bands 9-90kHz, 110-490kHz and above 1000 MHz. Radiated emission limits in these three bands are based on measurements employing an average detector, the peak field strength of any emission shall not exceed the maximum permitted average limits specified above by more than 20 dB under any condition of modulation.

4.2 BLOCK DIAGRAM OF TEST SETUP



4.3 PROCEDURE

- For below 1GHz, the EUT was placed on the top of a rotating table 0.8 meters above the ground at a 3 or 10 meter semi-anechoic chamber. The table was rotated 360 degrees to determine the position of the highest radiation.
- For above 1GHz, the EUT was placed on the top of a rotating table 1.5 meters above the ground at a 3 meter fully-anechoic chamber. The table was rotated 360 degrees to determine the position of the highest radiation.
- The EUT was set 3 or 10 meters away from the interference-receiving antenna, which was mounted on the top of a variable-height antenna tower.
- The antenna height is varied from one meter to four meters above the ground to determine the maximum value of the field strength. Both horizontal and vertical polarizations of the antenna are set to make the measurement.
- For each suspected emission, the EUT was arranged to its worst case and then the antenna was tuned to heights from 1 meter to 4 meters (for the test frequency of below 30MHz, the antenna was tuned to heights 1 meter) and the rotatable table was turned from 0 degrees to 360 degrees to find the maximum reading.
- The test-receiver system was set to Peak Detect Function and Specified Bandwidth with Maximum Hold Mode.
- If the emission level of the EUT in peak mode was 10dB lower than the limit specified, then testing could be stopped and the peak values of the EUT would be reported. Otherwise the emissions that did not have 10dB margin would be re-tested one by one using peak, quasi-peak or average method as specified and then reported in a data sheet.

- h. Test the EUT in the lowest channel, the middle channel, the Highest channel.
- i. The radiation measurements are performed in X, Y, Z axis positioning for Transmitting mode, and found the X axis positioning which it is the worst case.
- j. Repeat above procedures until all frequencies measured was complete.

Remark 1: $Level = Read\ Level + Cable\ Loss + Antenna\ Factor - Preamp\ Factor$

Remark 2: For frequencies above 1GHz, the field strength limits are based on average limits. However, the peak field strength of any emission shall not exceed the maximum permitted average limits specified above by more than 20 dB under any condition of modulation. For the emissions whose peak level is lower than the average limit, only the peak measurement is shown in the report.

BlueAsia

4.4 TEST DATA

Remark:

During the test, pre-scan the GFSK, Pi/4QPSK, 8-DPSK modulation, and found the GFSK modulation which it is worse case.

[TestMode: TX]						
Test channel:lowest						
Peak value:						
Frequency (MHz)	Read Level (dBuV)	Correct factor	Level (dBuV/m)	Limit Line (dBuV/m)	Over Limit (dB)	Polarization
2310	57.69	-4.2	53.49	74	-20.51	Horizontal
2390	58.13	-3.88	54.25	74	-19.75	Horizontal
2310	53.94	-4.49	49.45	74	-24.55	Vertical
2390	55.34	-4.21	51.13	74	-22.87	Vertical
Average value:						
Frequency (MHz)	Read Level (dBuV)	Correct factor(dB/m)	Level (dBuV/m)	Limit Line (dBuV/m)	Over Limit (dB)	Polarization
2310	46.78	-4.2	42.58	54	-11.42	Horizontal
2390	47.6	-3.88	43.72	54	-10.28	Horizontal
2310	44.17	-4.49	39.68	54	-14.32	Vertical
2390	44.37	-4.21	40.16	54	-13.84	Vertical
Test channel:Highest						
Peak value:						
Frequency (MHz)	Read Level (dBuV)	Correct factor	Level (dBuV/m)	Limit Line (dBuV/m)	Over Limit (dB)	Polarization
2483.5	52.65	-3.39	49.26	74	-24.74	Horizontal
2500	73.13	-3.3	69.83	74	-4.17	Horizontal
2483.5	49.95	-3.78	46.17	74	-27.83	Vertical
2500	67.25	-3.7	63.55	74	-10.45	Vertical
Average value:						
Frequency (MHz)	Read Level (dBuV)	Correct factor(dB/m)	Level (dBuV/m)	Limit Line (dBuV/m)	Over Limit (dB)	Polarization
2483.5	40.88	-3.39	37.49	54	-16.51	Horizontal
2500	40.74	-3.3	37.44	54	-16.56	Horizontal
2483.5	38	-3.78	34.22	54	-19.78	Vertical