

TEST REPORT

Product Name : Haylou-T19 True Wireless Earbuds
Brand Mark : Haylou
Model No. : Haylou-T19, Haylou-T19 (L)
FCC ID : 2AMQ6-T19L
Report Number : BLA-EMC-202004-A9602
Date of Sample Receipt : 2020/5/13
Date of Test : 2020/5/15 to 2020/5/22
Date of Issue : 2020/5/22
Test Standard : 47 CFR Part 15, Subpart C 15.247
Test Result : Pass

Prepared for:

Dongguan Liesheng Electronic Co., Ltd.
13/F, Project Phase 2 of Gaosheng Tech Tower, No. 5, Longxi
Road, Nancheng, Dongguan, Guangdong, China

Prepared by:

BlueAsia of Technical Services (Shenzhen) Co., Ltd.
IOT Test Centre of BlueAsia

No. 448 Bulong Road, Bantian Street, Longgang District, Shenzhen, China

TEL: +86-755-28682673

FAX: +86-755-28682673

Compiled by:

hason

Review by:

Sweet. Liang

Approved by:

Jmen li

Date:

2020/5/22



Report Revise Record

Version No.	Date	Description
00	2020/5/22	Original

BlueAsia

TABLE OF CONTENTS

1	TEST SUMMARY	6
2	GENERAL INFORMATION	7
3	GENERAL DESCRIPTION OF E.U.T.	7
4	TEST ENVIRONMENT	8
5	TEST MODE	8
6	MEASUREMENT UNCERTAINTY	8
7	DESCRIPTION OF SUPPORT UNIT.....	9
8	LABORATORY LOCATION.....	9
9	TEST INSTRUMENTS LIST	10
1	ANTENNA REQUIREMENT	14
1.1	CONCLUSION	14
2	DWELL TIME.....	15
2.1	LIMITS	15
2.2	BLOCK DIAGRAM OF TEST SETUP	15
2.3	TEST DATA	16
3	HOPPING CHANNEL NUMBER	17
3.1	LIMITS	17
3.2	BLOCK DIAGRAM OF TEST SETUP	17
3.3	TEST DATA	17
4	CARRIER FREQUENCIES SEPARATION	18
4.1	LIMITS	18
4.2	BLOCK DIAGRAM OF TEST SETUP	18
4.3	TEST DATA	18
5	20DB BANDWIDTH.....	19
5.1	BLOCK DIAGRAM OF TEST SETUP	19
5.2	TEST DATA	19
6	CONDUCTED PEAK OUTPUT POWER	20
6.1	LIMITS	20
6.2	BLOCK DIAGRAM OF TEST SETUP	20

6.3	TEST DATA	20
7	CONDUCTED EMISSIONS AT AC POWER LINE (150KHZ-30MHZ).....	21
7.1	LIMITS	21
7.2	BLOCK DIAGRAM OF TEST SETUP	21
7.3	PROCEDURE	21
7.4	TEST DATA	23
8	RADIATED SPURIOUS EMISSIONS.....	25
8.1	LIMITS	25
8.2	BLOCK DIAGRAM OF TEST SETUP	26
8.3	PROCEDURE	26
8.4	TEST DATA	28
9	RADIATED EMISSIONS WHICH FALL IN THE RESTRICTED BANDS.....	33
9.1	LIMITS	33
9.2	BLOCK DIAGRAM OF TEST SETUP	34
9.3	PROCEDURE	34
9.4	TEST DATA	36
10	CONDUCTED SPURIOUS EMISSIONS.....	37
10.1	LIMITS	37
10.2	BLOCK DIAGRAM OF TEST SETUP	37
10.3	TEST DATA.....	38
11	CONDUCTED BAND EDGES MEASUREMENT.....	39
11.1	LIMITS	39
11.2	BLOCK DIAGRAM OF TEST SETUP	39
11.3	TEST DATA.....	40
12	APPENDIX.....	41
12.1	APPENDIX : 20DB EMISSION BANDWIDTH	41
	<i>Test Result</i>	41
	<i>Test Graphs</i>	42
12.2	APPENDIX : MAXIMUM CONDUCTED OUTPUT POWER	45
	<i>Test Result</i>	45
	<i>Test Graphs</i>	46
12.3	APPENDIX : CARRIER FREQUENCY SEPARATION	49
	<i>Test Result</i>	49

Test Graphs.....	49
12.4 APPENDIX : TIME OF OCCUPANCY.....	51
Test Result.....	51
Test Graphs.....	52
12.5 APPENDIX : NUMBER OF HOPPING CHANNELS.....	55
Test Result.....	55
Test Graphs.....	55
12.6 APPENDIX : BAND EDGE MEASUREMENTS	57
Test Result.....	57
Test Graphs.....	58
12.7 APPENDIX : CONDUCTED SPURIOUS EMISSION.....	64
Test Result.....	64
Test Graphs.....	65
APPENDIX A: PHOTOGRAPHS OF TEST SETUP	74
APPENDIX B: PHOTOGRAPHS OF EUT	76

1 TEST SUMMARY

Test item	Test Requirement	Test Method	Class/Severity	Result
Antenna Requirement	47 CFR Part 15, Subpart C 15.247	N/A	47 CFR Part 15, Subpart C 15.203 & 15.247(c)	Pass
Dwell Time	47 CFR Part 15, Subpart C 15.247	ANSI C63.10 (2013) Section 7.8.4	47 CFR Part 15, Subpart C 15.247a(1)(iii)	Pass
Hopping Channel Number	47 CFR Part 15, Subpart C 15.247	ANSI C63.10 (2013) Section 7.8.3	47 CFR Part 15, Subpart C 15.247a(1)(iii)	Pass
Carrier Frequencies Separation	47 CFR Part 15, Subpart C 15.247	ANSI C63.10 (2013) Section 7.8.2	47 CFR Part 15, Subpart C 15.247a(1)	Pass
20dB Bandwidth	47 CFR Part 15, Subpart C 15.247	ANSI C63.10 (2013) Section 7.8.7	47 CFR Part 15, Subpart C 15.247(a)(1)	Pass
Conducted Peak Output Power	47 CFR Part 15, Subpart C 15.247	ANSI C63.10 (2013) Section 7.8.5	47 CFR Part 15, Subpart C 15.247(b)(3)	Pass
Conducted Emissions at AC Power Line (150kHz-30MHz)	47 CFR Part 15, Subpart C 15.247	ANSI C63.10 (2013) Section 6.2	47 CFR Part 15, Subpart C 15.207	Pass
Radiated Spurious Emissions	47 CFR Part 15, Subpart C 15.247	ANSI C63.10 (2013) Section 6.4,6.5,6.6	47 CFR Part 15, Subpart C 15.209 & 15.247(d)	Pass
Radiated Emissions which fall in the restricted bands	47 CFR Part 15, Subpart C 15.247	ANSI C63.10 (2013) Section 6.10.5	47 CFR Part 15, Subpart C 15.209 & 15.247(d)	Pass
Conducted Spurious Emissions	47 CFR Part 15, Subpart C 15.247	ANSI C63.10 (2013) Section 7.8.6 & Section 11.11	47 CFR Part 15, Subpart C 15.247(d)	Pass
Conducted Band Edges Measurement	47 CFR Part 15, Subpart C 15.247	ANSI C63.10 (2013) Section 7.8.8 & Section 11.13.3.2	47 CFR Part 15, Subpart C 15.247(d)	Pass

2 GENERAL INFORMATION

Applicant	Dongguan Liesheng Electronic Co., Ltd.
Address	13/F,Project Phrase 2 of GaoshengTechTower,No.5,Longxi Road,Nancheng,Dongguan,Guangdong,China
Manufacturer	Dongguan Liesheng Electronic Co., Ltd.
Address	13/F,Project Phrase 2 of GaoshengTechTower,No.5,Longxi Road,Nancheng,Dongguan,Guangdong,China
Factory	N/A
Address	N/A
Product Name	Haylou-T19 True Wireless Earbuds
Test Model No.	Haylou-T19

3 GENERAL DESCRIPTION OF E.U.T.

Hardware Version	V1.0
Software Version	V1.0
Operation Frequency:	2402MHz-2480MHz
Modulation Type:	GFSK, p/4DQPSK, 8DPSK
Channel Spacing:	1MHz
Number of Channels:	79
Antenna Type:	Chip Antenna
Antenna Gain:	2.5dBi

4 TEST ENVIRONMENT

Environment	Temperature	Voltage
Normal	25°C	DC3.7V

5 TEST MODE

TEST MODE	TEST MODE DESCRIPTION
Transmitting mode	Keep the EUT in continuously transmitting mode with modulation. (hopping or no hopping mode)
<p><i>Remark: During the test, the test voltage was tuned from 85% to 115% of the nominal rated supply voltage, and found that the worst case was under the nominal rated supply condition. So the report just shows that condition's data.</i></p> <p><i>Full battery is used during all test except ac conducted emission, DH1, DH3, DH5 all have been tested, during the test, GFSK, Pi/4QPSK, 8-DPSK modulation were all pre-scanned only worse case is reported.</i></p>	

6 MEASUREMENT UNCERTAINTY

Parameter	Expanded Uncertainty (Confidence of 95%)
Radiated Emission	±4.34dB
Radiated Emission	±4.24dB
Radiated Emission	±4.68dB
AC Power Line Conducted Emission	±3.45dB

Parameter	Expanded Uncertainty (Confidence of 95%)
Occupied Channel Bandwidth	±5 %
RF output power, conducted	±1.5 dB
Power Spectral Density, conducted	±3.0 dB
Unwanted Emissions, conducted	±3.0 dB
Temperature	±3 °C
Supply voltages	±3 %
Time	±5 %
Radiated Emission (30MHz ~ 1000MHz)	±4.35 dB
Radiated Emission (1GHz ~ 18GHz)	±4.44 dB

7 DESCRIPTION OF SUPPORT UNIT

Device Type	Manufacturer	Model Name	Serial No.	Remark
AC Adapter (UGREEN)	UGREEN	CD112	N/A	N/A

8 LABORATORY LOCATION

All tests were performed at:
BlueAsia of Technical Services(Shenzhen) Co., Ltd.
IOT Test Centre of BlueAsia
No. 448 Bulong Road, Bantian Street, Longgang District, Shenzhen, China
Telephone: TEL: +86-755-28682673 FAX: +86-755-28682673
No tests were sub-contracted.

9 TEST INSTRUMENTS LIST

Test Equipment Of Dwell Time					
Equipment	Manufacturer	Model	S/N	Cal.Date	Cal.Due
Spectrum	R&S	FSP40	100817	7/4/2019	7/3/2020
Spectrum	Agilent	N9020A	MY49100060	12/17/2019	12/16/2020
Signal Generator	Agilent	N5182A	MY49060650	12/17/2019	12/16/2020
Signal Generator	Agilent	E8257D	MY44320250	4/20/2020	4/19/2021

Test Equipment Of Hopping Channel Number					
Equipment	Manufacturer	Model	S/N	Cal.Date	Cal.Due
Spectrum	R&S	FSP40	100817	7/4/2019	7/3/2020
Spectrum	Agilent	N9020A	MY49100060	12/17/2019	12/16/2020
Signal Generator	Agilent	N5182A	MY49060650	12/17/2019	12/16/2020
Signal Generator	Agilent	E8257D	MY44320250	4/20/2020	4/19/2021

Test Equipment Of Carrier Frequencies Separation					
Equipment	Manufacturer	Model	S/N	Cal.Date	Cal.Due
Spectrum	R&S	FSP40	100817	7/4/2019	7/3/2020
Spectrum	Agilent	N9020A	MY49100060	12/17/2019	12/16/2020
Signal Generator	Agilent	N5182A	MY49060650	12/17/2019	12/16/2020
Signal Generator	Agilent	E8257D	MY44320250	4/20/2020	4/19/2021

Test Equipment Of 20dB Bandwidth					
Equipment	Manufacturer	Model	S/N	Cal.Date	Cal.Due
Spectrum	R&S	FSP40	100817	7/4/2019	7/3/2020
Spectrum	Agilent	N9020A	MY49100060	12/17/2019	12/16/2020
Signal Generator	Agilent	N5182A	MY49060650	12/17/2019	12/16/2020
Signal Generator	Agilent	E8257D	MY44320250	4/20/2020	4/19/2021

Test Equipment Of Conducted Peak Output Power					
Equipment	Manufacturer	Model	S/N	Cal.Date	Cal.Due
Spectrum	R&S	FSP40	100817	7/4/2019	7/3/2020
Spectrum	Agilent	N9020A	MY49100060	12/17/2019	12/16/2020
Signal Generator	Agilent	N5182A	MY49060650	12/17/2019	12/16/2020
Signal Generator	Agilent	E8257D	MY44320250	4/20/2020	4/19/2021

Test Equipment Of Conducted Emissions at AC Power Line (150kHz-30MHz)					
Equipment	Manufacturer	Model	S/N	Cal.Date	Cal.Due
Shield room	SKET	833	N/A	6/10/2018	6/9/2021
Receiver	R&S	ESPI3	101082	4/20/2020	4/19/2021
LISN	R&S	ENV216	3560.6550.15	7/4/2019	7/3/2020
LISN	AT	AT166-2	AKK1806000003	12/17/2019	12/16/2020
EMI software	EZ	EZ-EMC	N/A	N/A	N/A

Test Equipment Of Radiated Spurious Emissions					
Equipment	Manufacturer	Model	S/N	Cal.Date	Cal.Due
Chamber	SKET	966	N/A	5/8/2018	5/7/2021
Spectrum	R&S	FSP40	100817	7/4/2019	7/3/2020
Receiver	R&S	ESR7	101199	4/20/2020	4/19/2021
broadband Antenna	Schwarzbeck	VULB9168	00836 P:00227	7/14/2018	7/13/2020
Horn Antenna	Schwarzbeck	9120D	01892 P:00331	7/14/2018	7/13/2020
Amplifier	SKET	LNPA-0118-45	N/A	7/4/2019	7/3/2020
EMI software	EZ	EZ-EMC	N/A	N/A	N/A
Loop antenna	SCHNARZBECK	FMZB1519B	00102	2/14/2019	2/13/2022
Controller	SKET	N/A	N/A	N/A	N/A
Coaxial Cable	BlueAsia	BLA-XC-02	N/A	N/A	N/A
Coaxial Cable	BlueAsia	BLA-XC-03	N/A	N/A	N/A
Coaxial Cable	BlueAsia	BLA-XC-01	N/A	N/A	N/A

Test Equipment Of Radiated Emissions which fall in the restricted bands					
Equipment	Manufacturer	Model	S/N	Cal.Date	Cal.Due
Chamber	SKET	966	N/A	5/8/2018	5/7/2021
Spectrum	R&S	FSP40	100817	7/4/2019	7/3/2020
Receiver	R&S	ESR7	101199	4/20/2020	4/19/2021
broadband Antenna	Schwarzbeck	VULB9168	00836 P:00227	7/14/2018	7/13/2020
Horn Antenna	Schwarzbeck	9120D	01892 P:00331	7/14/2018	7/13/2020

BlueAsia of Technical Services(Shenzhen) Co., Ltd.

IOT Test Centre of BlueAsia, No. 448 Bulong Road, Bantian Street, Longgang District, Shenzhen, China

Telephone: TEL: +86-755-28682673 FAX: +86-755-28682673

Email: marketing@cblueasia.com

Amplifier	SKET	LNPA-0118-45	N/A	7/4/2019	7/3/2020
EMI software	EZ	EZ-EMC	N/A	N/A	N/A
Loop antenna	SCHNARZBECK	FMZB1519B	00102	2/14/2019	2/13/2022
Controller	SKET	N/A	N/A	N/A	N/A
Coaxial Cable	BlueAsia	BLA-XC-02	N/A	N/A	N/A
Coaxial Cable	BlueAsia	BLA-XC-03	N/A	N/A	N/A
Coaxial Cable	BlueAsia	BLA-XC-01	N/A	N/A	N/A

Test Equipment Of Conducted Spurious Emissions

Equipment	Manufacturer	Model	S/N	Cal.Date	Cal.Due
Spectrum	R&S	FSP40	100817	7/4/2019	7/3/2020
Spectrum	Agilent	N9020A	MY49100060	12/17/2019	12/16/2020
Signal Generator	Agilent	N5182A	MY49060650	12/17/2019	12/16/2020
Signal Generator	Agilent	E8257D	MY44320250	4/20/2020	4/19/2021

Test Equipment Of Conducted Band Edges Measurement

Equipment	Manufacturer	Model	S/N	Cal.Date	Cal.Due
Spectrum	R&S	FSP40	100817	7/4/2019	7/3/2020
Spectrum	Agilent	N9020A	MY49100060	12/17/2019	12/16/2020
Signal Generator	Agilent	N5182A	MY49060650	12/17/2019	12/16/2020
Signal Generator	Agilent	E8257D	MY44320250	4/20/2020	4/19/2021

1 ANTENNA REQUIREMENT

Test Standard	47 CFR Part 15, Subpart C 15.247
Test Method	N/A

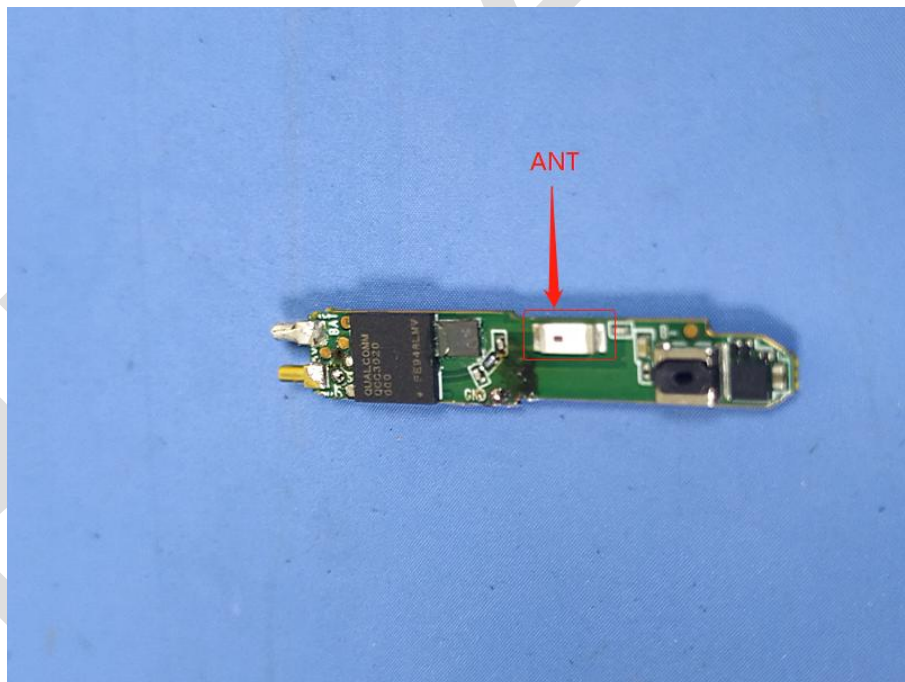
1.1 CONCLUSION

Standard Requirement:

An intentional radiator shall be designed to ensure that no antenna other than that furnished by the responsible party shall be used with the device. The use of an antenna that uses a unique coupling to the intentional radiator, the manufacturer may design the unit permanently attached antenna or of an so that a broken antenna can be replaced by the user, but the use of a standard antenna jack or electrical connector is prohibited.

EUT Antenna:

The antenna is integrated on the main PCB and no consideration of replacement. The best case gain of the antenna is 2.5dBi.



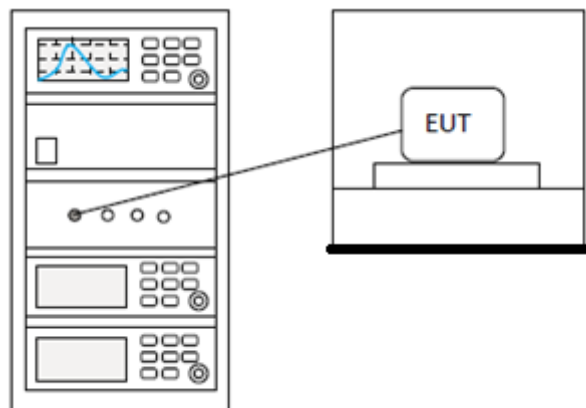
2 DWELL TIME

Test Standard	47 CFR Part 15, Subpart C 15.247
Test Method	ANSI C63.10 (2013) Section 7.8.4
Test Mode (Pre-Scan)	TX
Test Mode (Final Test)	TX
Tester	Eason
Temperature	25°C
Humidity	60%

2.1 LIMITS

Frequency(MHz)	Limit
902-928	0.4S within a 20S period(20dB bandwidth<250kHz)
	0.4S within a 10S period(20dB bandwidth≥250kHz)
2400-2483.5	0.4S within a period of 0.4Smultiplied by the number of hopping channels
5725-5850	0.4S within a 30S period

2.2 BLOCK DIAGRAM OF TEST SETUP



2.3 TEST DATA

Pass: Please Refer To Appendix: For Details

BlueAsia

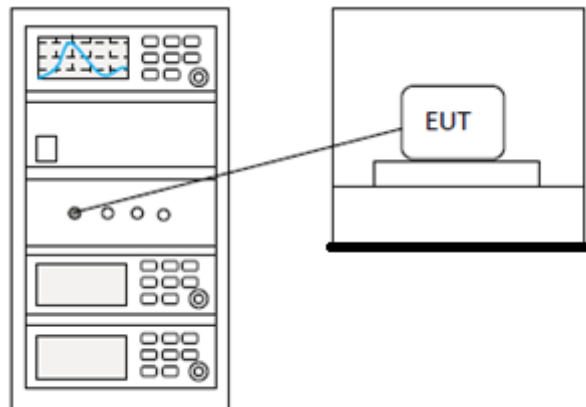
3 HOPPING CHANNEL NUMBER

Test Standard	47 CFR Part 15, Subpart C 15.247
Test Method	ANSI C63.10 (2013) Section 7.8.3
Test Mode (Pre-Scan)	TX
Test Mode (Final Test)	TX
Tester	Eason
Temperature	25°C
Humidity	60%

3.1 LIMITS

Frequency range(MHz)	Number of hopping channels (minimum)
902-928	50 for 20dB bandwidth <250kHz
	25 for 20dB bandwidth ≥250kHz
2400-2483.5	15
5725-5850	75

3.2 BLOCK DIAGRAM OF TEST SETUP



3.3 TEST DATA

Pass: Please Refer To Appendix: For Details

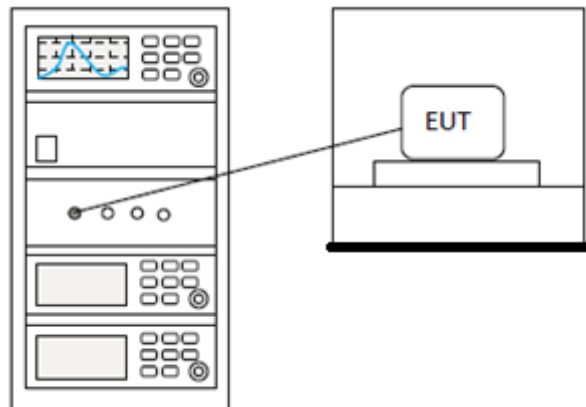
4 CARRIER FREQUENCIES SEPARATION

Test Standard	47 CFR Part 15, Subpart C 15.247
Test Method	ANSI C63.10 (2013) Section 7.8.2
Test Mode (Pre-Scan)	TX
Test Mode (Final Test)	TX
Tester	Eason
Temperature	25°C
Humidity	60%

4.1 LIMITS

Limit:	2/3 of the 20dB bandwidth base on the transmission power is less than 0.125W
---------------	--

4.2 BLOCK DIAGRAM OF TEST SETUP



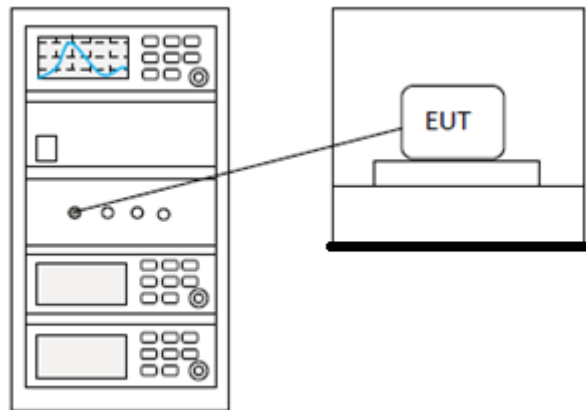
4.3 TEST DATA

Pass: Please Refer To Appendix: For Details
--

5 20DB BANDWIDTH

Test Standard	47 CFR Part 15, Subpart C 15.247
Test Method	ANSI C63.10 (2013) Section 7.8.7
Test Mode (Pre-Scan)	TX
Test Mode (Final Test)	TX
Tester	Eason
Temperature	25°C
Humidity	60%

5.1 BLOCK DIAGRAM OF TEST SETUP



5.2 TEST DATA

Pass: Please Refer To Appendix: For Details

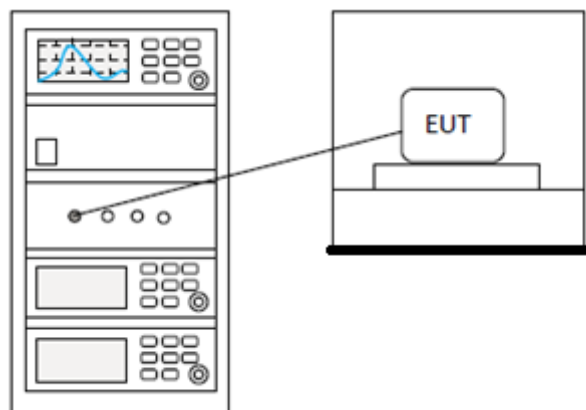
6 CONDUCTED PEAK OUTPUT POWER

Test Standard	47 CFR Part 15, Subpart C 15.247
Test Method	ANSI C63.10 (2013) Section 7.8.5
Test Mode (Pre-Scan)	TX
Test Mode (Final Test)	TX
Tester	Eason
Temperature	25°C
Humidity	60%

6.1 LIMITS

Frequency range(MHz)	Output power of the intentional radiator(watt)
902-928	1 for ≥ 50 hopping channels
	0.25 for $25 \leq \text{hopping channels} < 50$
	1 for digital modulation
2400-2483.5	1 for ≥ 75 non-overlapping hopping channels
	0.125 for all other frequency hopping systems
	1 for digital modulation
5725-5850	1 for frequency hopping systems and digital modulation

6.2 BLOCK DIAGRAM OF TEST SETUP



6.3 TEST DATA

Pass: Please Refer To Appendix: For Details

7 CONDUCTED EMISSIONS AT AC POWER LINE (150KHZ-30MHZ)

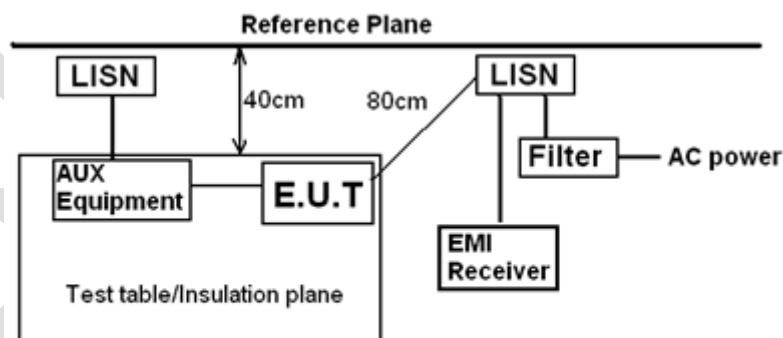
Test Standard	47 CFR Part 15, Subpart C 15.247
Test Method	ANSI C63.10 (2013) Section 6.2
Test Mode (Pre-Scan)	TX
Test Mode (Final Test)	TX
Tester	Eason
Temperature	25°C
Humidity	55%

7.1 LIMITS

Frequency of emission(MHz)	Conducted limit(dB μ V)	
	Quasi-peak	Average
0.15-0.5	66 to 56*	56 to 46*
0.5-5	56	46
5-30	60	50

*Decreases with the logarithm of the frequency.

7.2 BLOCK DIAGRAM OF TEST SETUP



Remark
 E.U.T: Equipment Under Test
 LISN: Line Impedance Stabilization Network
 Test table height=0.8m

7.3 PROCEDURE

- 1) The mains terminal disturbance voltage test was conducted in a shielded room.
- 2) The EUT was connected to AC power source through a LISN 1 (Line Impedance Stabilization Network) which provides a 50ohm/50 μ H + 5ohm linear impedance. The power cables of all other units of the EUT were connected to a second LISN 2, which was bonded to the ground reference plane in the same way as

BlueAsia of Technical Services(Shenzhen) Co., Ltd.

IOT Test Centre of BlueAsia, No. 448 Bulong Road, Bantian Street, Longgang District, Shenzhen, China

Telephone: TEL: +86-755-28682673 FAX: +86-755-28682673

Email: marketing@cblueasia.com

the LISN 1 for the unit being measured. A multiple socket outlet strip was used to connect multiple power cables to a single LISN provided the rating of the LISN was not exceeded.

3) The tabletop EUT was placed upon a non-metallic table 0.8m above the ground reference plane. And for floor-standing arrangement, the EUT was placed on the horizontal ground reference plane,

4) The test was performed with a vertical ground reference plane. The rear of the EUT shall be 0.4 m from the vertical ground reference plane. The vertical ground reference plane was bonded to the horizontal ground reference plane. The LISN 1 was placed 0.8 m from the boundary of the unit under test and bonded to a ground reference plane for LISNs mounted on top of the ground reference plane. This distance was between the closest points of the LISN 1 and the EUT. All other units of the EUT and associated equipment was at least 0.8 m from the LISN 2.

5) In order to find the maximum emission, the relative positions of equipment and all of the interface cables must be changed according to ANSI C63.10 on conducted measurement.

Remark: LISN=Read Level+ Cable Loss+ LISN Factor

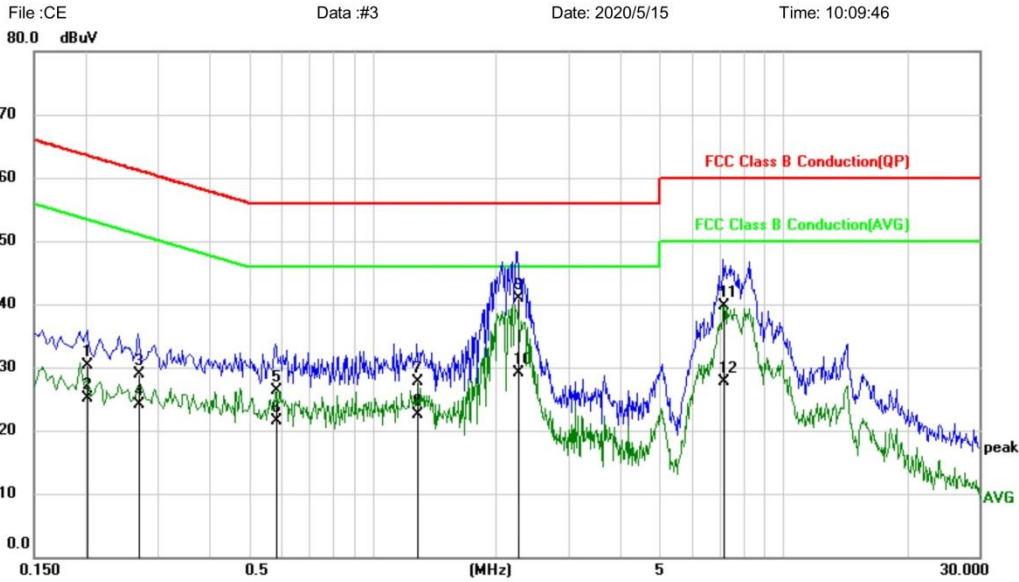
BlueAsia

7.4 TEST DATA

[TestMode: TX]; [Line: Line]

Power:AC120V/60Hz

Conducted Emission Measurement



File :CE Data :#3 Date: 2020/5/15 Time: 10:09:46

Site Phase: **L1** Temperature: 26

Limit: FCC Class B Conduction(QP) Power: Humidity: 60 %

EUT: TWS Bluetooth earphones

M/N: Haylou-T19

Mode: BT mode

Note:

No.	Mk.	Freq.	Reading Level	Correct Factor	Measurement	Limit	Over	Detector	Comment
		MHz	dBuV	dB	dBuV	dBuV	dB		
1		0.2020	20.35	9.87	30.22	63.53	-33.31	QP	
2		0.2020	15.28	9.87	25.15	53.53	-28.38	AVG	
3		0.2700	19.12	9.88	29.00	61.12	-32.12	QP	
4		0.2700	14.21	9.88	24.09	51.12	-27.03	AVG	
5		0.5820	16.62	9.74	26.36	56.00	-29.64	QP	
6		0.5820	11.79	9.74	21.53	46.00	-24.47	AVG	
7		1.2860	17.91	9.82	27.73	56.00	-28.27	QP	
8		1.2860	12.62	9.82	22.44	46.00	-23.56	AVG	
9	*	2.2580	31.19	9.81	41.00	56.00	-15.00	QP	
10		2.2580	19.35	9.81	29.16	46.00	-16.84	AVG	
11		7.1500	29.90	9.86	39.76	60.00	-20.24	QP	
12		7.1500	17.88	9.86	27.74	50.00	-22.26	AVG	

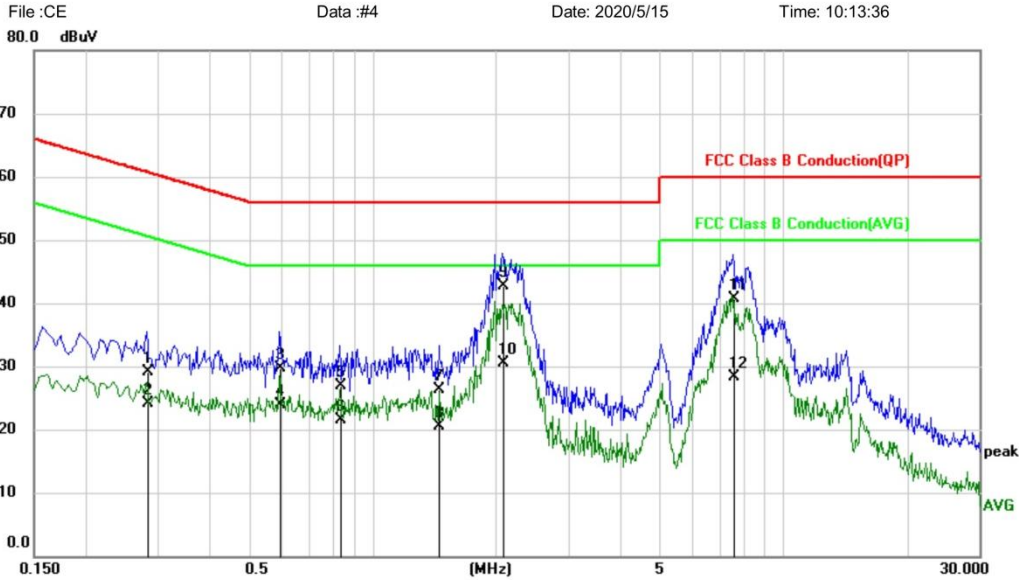
*:Maximum data x:Over limit !:over margin (Reference Only)

Test Result: Pass

[TestMode: TX]; [Line: Nutral]

Power: AC120V/60Hz

Conducted Emission Measurement



Site: _____ Phase: **N** Temperature: 26
 Limit: FCC Class B Conduction(QP) Power: _____ Humidity: 60 %
 EUT: TWS Bluetooth earphones
 M/N: Haylou-T19
 Mode: BT mode
 Note:

No.	Mk.	Freq. MHz	Reading Level dBuV	Correct Factor dB	Measure- ment dBuV	Limit dBuV	Over dB	Detector	Comment
1		0.2819	19.27	9.80	29.07	60.76	-31.69	QP	
2		0.2819	14.21	9.80	24.01	50.76	-26.75	AVG	
3		0.5940	20.04	9.74	29.78	56.00	-26.22	QP	
4		0.5940	14.18	9.74	23.92	46.00	-22.08	AVG	
5		0.8340	17.17	9.75	26.92	56.00	-29.08	QP	
6		0.8340	11.84	9.75	21.59	46.00	-24.41	AVG	
7		1.4540	16.39	9.83	26.22	56.00	-29.78	QP	
8		1.4540	10.58	9.83	20.41	46.00	-25.59	AVG	
9	*	2.0740	32.82	9.86	42.68	56.00	-13.32	QP	
10		2.0740	20.68	9.86	30.54	46.00	-15.46	AVG	
11		7.5500	30.84	9.85	40.69	60.00	-19.31	QP	
12		7.5500	18.50	9.85	28.35	50.00	-21.65	AVG	

*:Maximum data x:Over limit !:over margin

(Reference Only)

Test Result: Pass

8 RADIATED SPURIOUS EMISSIONS

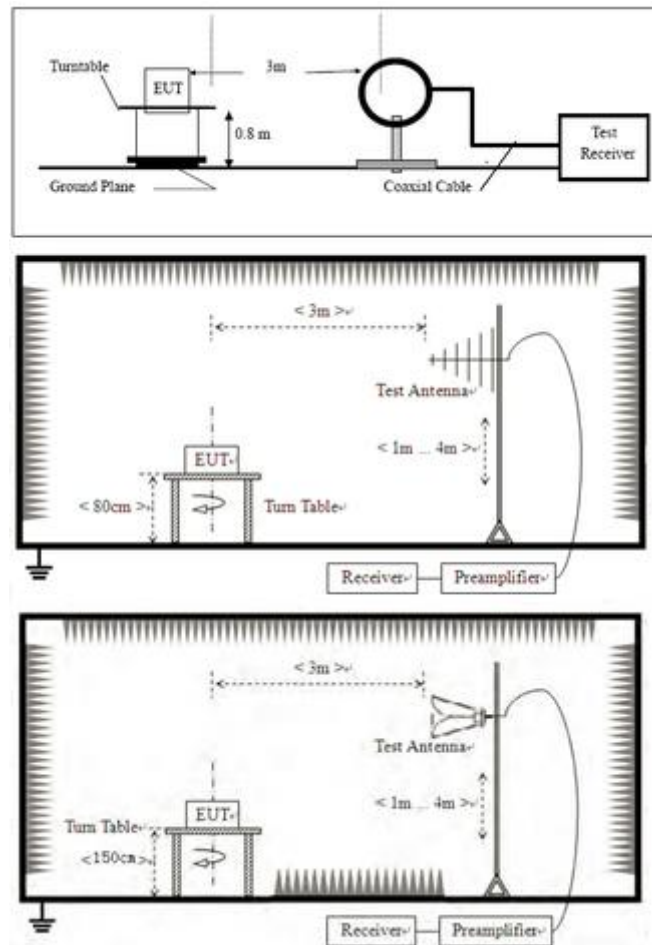
Test Standard	47 CFR Part 15, Subpart C 15.247
Test Method	ANSI C63.10 (2013) Section 6.4,6.5,6.6
Test Mode (Pre-Scan)	TX;TX mode (SE) below 1G
Test Mode (Final Test)	TX;TX mode (SE) below 1G
Tester	Eason
Temperature	25°C
Humidity	55%

8.1 LIMITS

Frequency(MHz)	Field strength(microvolts/meter)	Measurement distance(meters)
0.009-0.490	2400/F(kHz)	300
0.490-1.705	24000/F(kHz)	30
1.705-30.0	30	30
30-88	100	3
88-216	150	3
216-960	200	3
Above 960	500	3

Remark: The emission limits shown in the above table are based on measurements employing a CISPR quasi-peak detector except for the frequency bands 9-90kHz, 110-490kHz and above 1000 MHz. Radiated emission limits in these three bands are based on measurements employing an average detector, the peak field strength of any emission shall not exceed the maximum permitted average limits specified above by more than 20 dB under any condition of modulation.

8.2 BLOCK DIAGRAM OF TEST SETUP



8.3 PROCEDURE

- For below 1GHz, the EUT was placed on the top of a rotating table 0.8 meters above the ground at a 3 or 10 meter semi-anechoic chamber. The table was rotated 360 degrees to determine the position of the highest radiation.
- For above 1GHz, the EUT was placed on the top of a rotating table 1.5 meters above the ground at a 3 meter fully-anechoic chamber. The table was rotated 360 degrees to determine the position of the highest radiation.
- The EUT was set 3 or 10 meters away from the interference-receiving antenna, which was mounted on the top of a variable-height antenna tower.
- The antenna height is varied from one meter to four meters above the ground to determine the maximum value of the field strength. Both horizontal and vertical polarizations of the antenna are set to make the measurement.
- For each suspected emission, the EUT was arranged to its worst case and then the antenna was tuned to heights from 1 meter to 4 meters (for the test frequency of below 30MHz, the antenna was tuned to heights 1 meter) and the rotatable table was turned from 0 degrees to 360 degrees to find the maximum reading.
- The test-receiver system was set to Peak Detect Function and Specified Bandwidth with Maximum Hold Mode.
- If the emission level of the EUT in peak mode was 10dB lower than the limit specified, then testing could be stopped and the peak values of the EUT would be reported. Otherwise the emissions that did not have 10dB margin would be re-tested one by one using peak, quasi-peak or average method as specified and then reported in a data sheet.

BlueAsia of Technical Services(Shenzhen) Co., Ltd.

IOT Test Centre of BlueAsia, No. 448 Bulong Road, Bantian Street, Longgang District, Shenzhen, China

Telephone: TEL: +86-755-28682673 FAX: +86-755-28682673

Email: marketing@cblueasia.com

- h. Test the EUT in the lowest channel, the middle channel, the Highest channel.
- i. The radiation measurements are performed in X, Y, Z axis positioning for Transmitting mode, and found the X axis positioning which it is the worst case.
- j. Repeat above procedures until all frequencies measured was complete.

Remark:

- 1) For emission below 1GHz, through pre-scan found the worst case is the lowest channel. Only the worst case is recorded in the report.
- 2) The field strength is calculated by adding the Antenna Factor, Cable Factor & Preamplifier. The basic equation with a sample calculation is as follows:
Final Test Level = Receiver Reading + Antenna Factor + Cable Factor + Preamplifier Factor
- 3) Scan from 9kHz to 25GHz, the disturbance above 18GHz and below 30MHz was very low. The points marked on above plots are the highest emissions could be found when testing, so only above points had been displayed. The amplitude of spurious emissions from the radiator which are attenuated more than 20dB below the limit need not be reported.
- 4) For frequencies above 1GHz, the field strength limits are based on average limits. However, the peak field strength of any emission shall not exceed the maximum permitted average limits specified above by more than 20 dB under any condition of modulation. For the emissions whose peak level is lower than the average limit, only the peak measurement is shown in the report.

8.4 TEST DATA

During the test, pre-scan the GFSK, Pi/4QPSK, 8-DPSK modulation, and found the GFSK modulation which it is worse case.

[TestMode: TX]						
Test channel:lowest						
Peak value:						
Frequency (MHz)	Read Level (dBuV)	Correct factor	Level (dBuV/m)	Limit Line (dBuV/m)	Over Limit (dB)	Polarization
4804.00	60.39	2.38	62.77	74	-11.23	Vertical
7206.00	59.09	2.17	61.26	74	-12.74	Vertical
9608.00	61.88	2.06	63.94	74	-10.06	Vertical
12010.00	*			74		Vertical
14412.00	*			74		Vertical
4804.00	60.95	2.38	63.33	74	-10.67	Horizontal
7206.00	60.29	2.17	62.46	74	-11.54	Horizontal
9608.00	58.56	2.06	60.62	74	-13.38	Horizontal
12010.00	*			74		Horizontal
14412.00	*			74		Horizontal
Average value:						
Frequency (MHz)	Read Level (dBuV)	Correct factor	Level (dBuV/m)	Limit Line (dBuV/m)	Over Limit (dB)	Polarization
4804.00	40.13	2.38	42.51	54	-11.49	Vertical
7206.00	38.77	2.17	40.94	54	-13.06	Vertical
9608.00	39.35	2.06	41.41	54	-12.59	Vertical
12010.00	*			54		Vertical
14412.00	*			54		Vertical
4804.00	39.5	2.38	41.88	54	-12.12	Horizontal
7206.00	38.91	2.17	41.08	54	-12.92	Horizontal
9608.00	41.14	2.06	43.2	54	-10.8	Horizontal
12010.00	*			54		Horizontal
14412.00	*			54		Horizontal

Test channel:Middle						
Peak value:						
Frequency (MHz)	Read Level (dBuV)	Correct factor	Level (dBuV/m)	Limit Line (dBuV/m)	Over Limit (dB)	Polarization
4882.00	58.16	0.17	58.33	74	-15.67	Vertical
7323.00	58.28	1.43	59.71	74	-14.29	Vertical
9764.00	60.26	1.26	61.52	74	-12.48	Vertical
12205.00	*			74		Vertical
14646.00	*			74		Vertical
4882.00	60.92	0.17	61.09	74	-12.91	Horizontal
7323.00	59.86	1.43	61.29	74	-12.71	Horizontal
9764.00	61.89	1.26	63.15	74	-10.85	Horizontal
12205.00	*			74		Horizontal
14646.00	*			74		Horizontal
Average value:						
Frequency (MHz)	Read Level (dBuV)	Correct factor	Level (dBuV/m)	Limit Line (dBuV/m)	Over Limit (dB)	Polarization
4882.00	39.37	0.17	39.54	54	-14.46	Vertical
7323.00	39.27	1.43	40.7	54	-13.3	Vertical
9764.00	41.71	1.26	42.97	54	-11.03	Vertical
12205.00	*			54		Vertical
14646.00	*			54		Vertical
4882.00	41.48	0.17	41.65	54	-12.35	Horizontal
7323.00	41.08	1.43	42.51	54	-11.49	Horizontal
9764.00	38.5	1.26	39.76	54	-14.24	Horizontal
12205.00	*			54		Horizontal
14646.00	*			54		Horizontal

Test channel: Highest						
Peak value:						
Frequency (MHz)	Read Level (dBuV)	Correct factor	Level (dBuV/m)	Limit Line (dBuV/m)	Over Limit (dB)	Polarization
4960.00	58.1	1.04	59.14	74	-14.86	Vertical
7440.00	58.63	2.59	61.22	74	-12.78	Vertical
9920.00	61.38	2.74	64.12	74	-9.88	Vertical
12400.00	*			74		Vertical
14880.00	*			74		Vertical
4960.00	58.09	1.04	59.13	74	-14.87	Horizontal
7440.00	58.88	2.59	61.47	74	-12.53	Horizontal
9920.00	60.44	2.74	63.18	74	-10.82	Horizontal
12400.00	*			74		Horizontal
14880.00	*			74		Horizontal
Average value:						
Frequency (MHz)	Read Level (dBuV)	Correct factor	Level (dBuV/m)	Limit Line (dBuV/m)	Over Limit (dB)	Polarization
4960.00	41.98	1.04	43.02	54	-10.98	Vertical
7440.00	39.99	2.59	42.58	54	-11.42	Vertical
9920.00	38.72	2.74	41.46	54	-12.54	Vertical
12400.00	*			54		Vertical
14880.00	*			54		Vertical
4960.00	40.03	1.04	41.07	54	-12.93	Horizontal
7440.00	41.66	2.59	44.25	54	-9.75	Horizontal
9920.00	40.52	2.74	43.26	54	-10.74	Horizontal
12400.00	*			54		Horizontal
14880.00	*			54		Horizontal
Test Result: Pass						