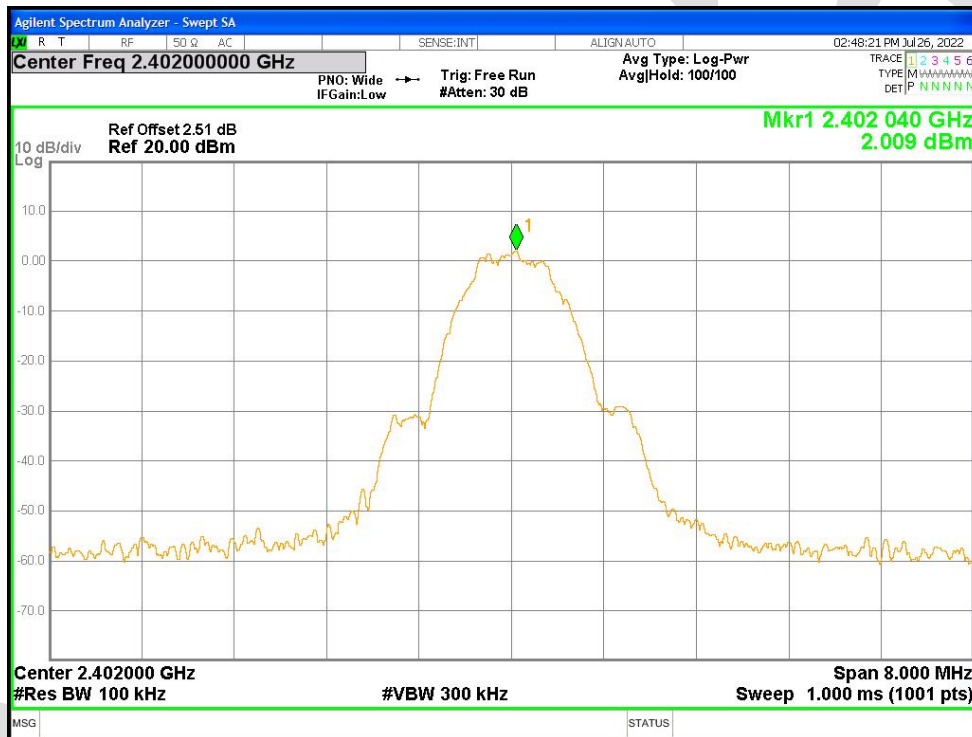


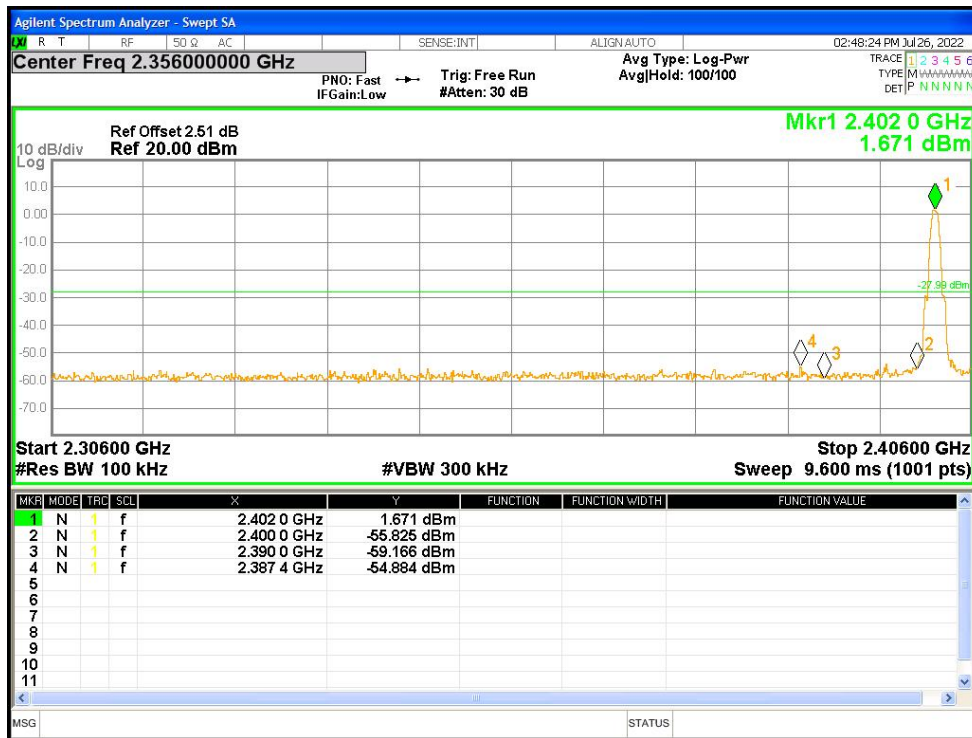
**Band Edge**

Condition	Mode	Frequency (MHz)	Antenna	Max Value (dBc)	Limit (dBc)	Verdict
NVNT	BLE 1M	2402	Ant1	-56.89	-30	Pass
NVNT	BLE 1M	2480	Ant1	-56.51	-30	Pass
NVNT	BLE 2M	2402	Ant1	-55.79	-30	Pass
NVNT	BLE 2M	2480	Ant1	-56.53	-30	Pass

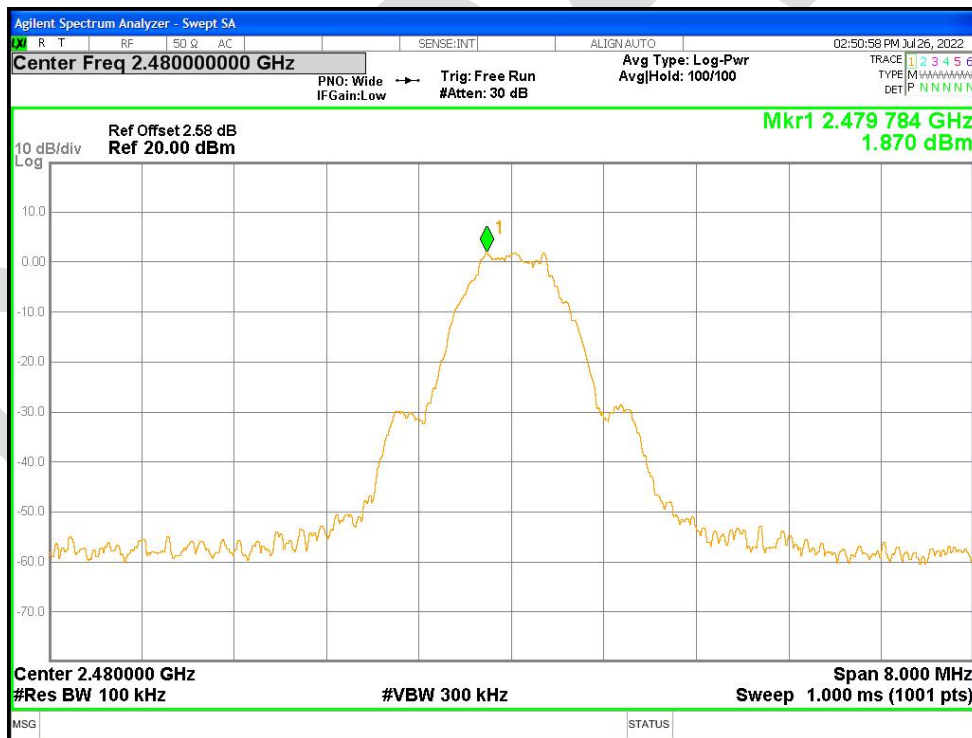
Band Edge NVNT BLE 1M 2402MHz Ant1 Ref



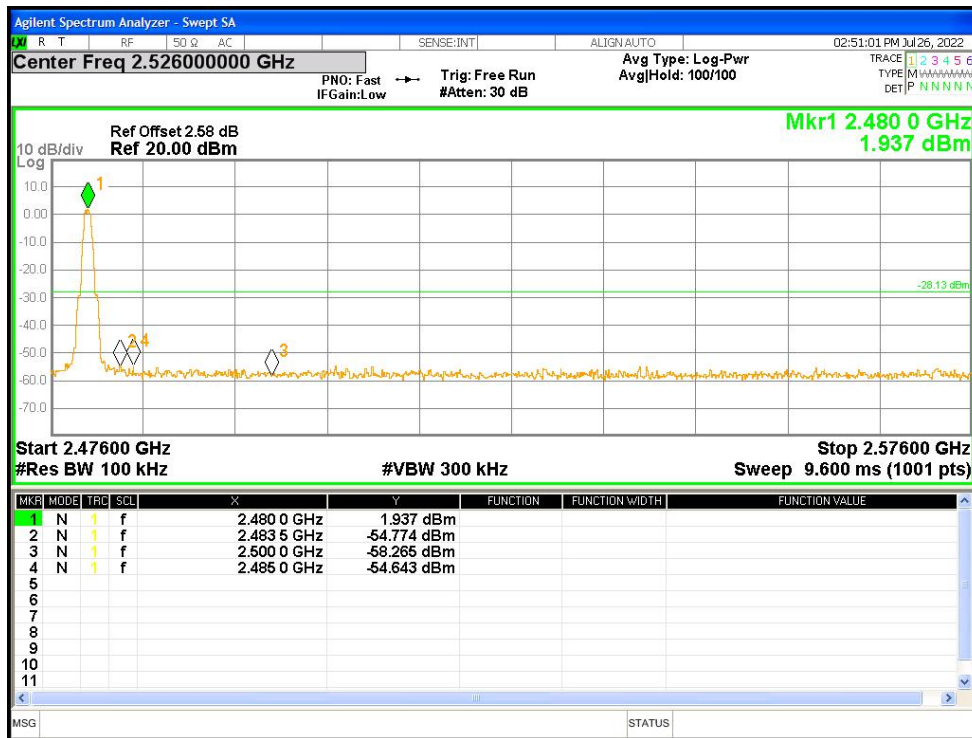
Band Edge NVNT BLE 1M 2402MHz Ant1 Emission



Band Edge NVNT BLE 1M 2480MHz Ant1 Ref



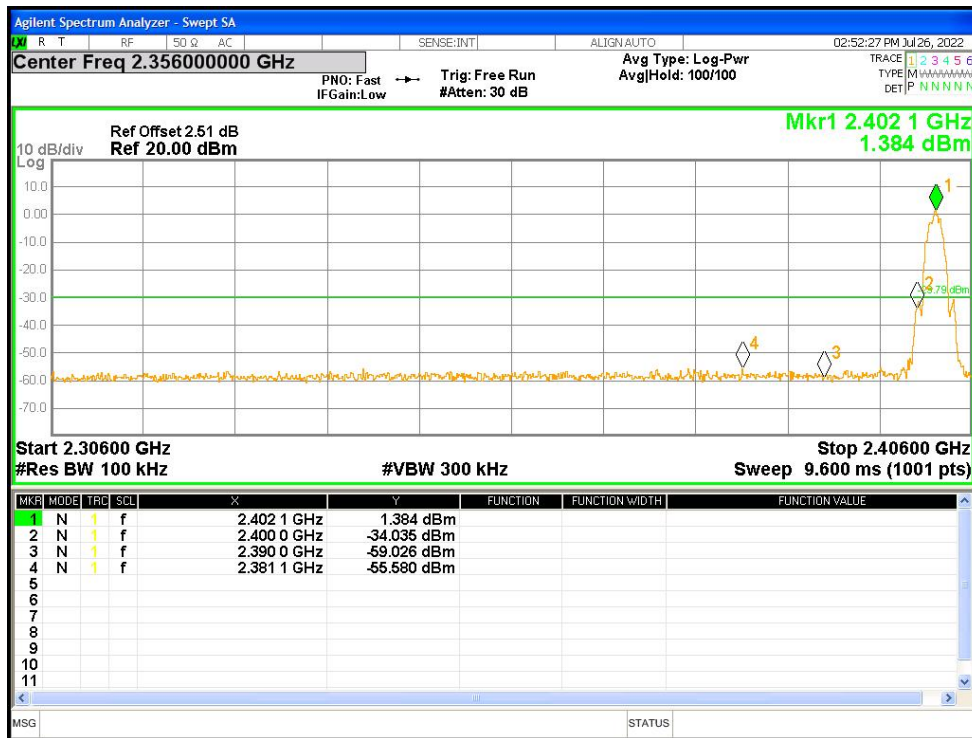
Band Edge NVNT BLE 1M 2480MHz Ant1 Emission



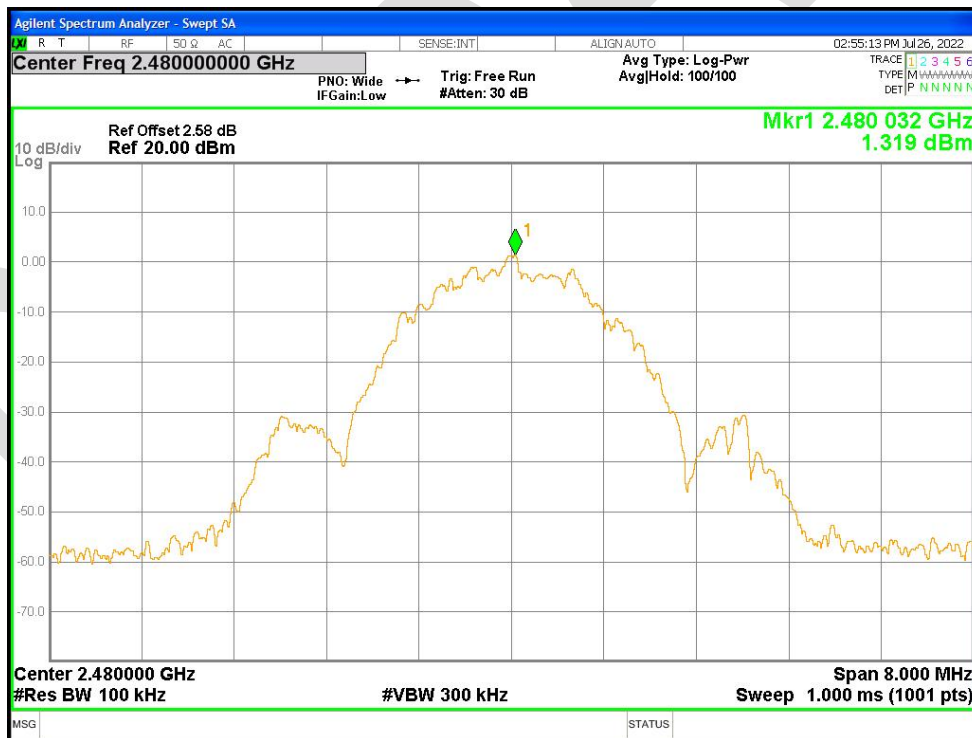
Band Edge NVNT BLE 2M 2402MHz Ant1 Ref



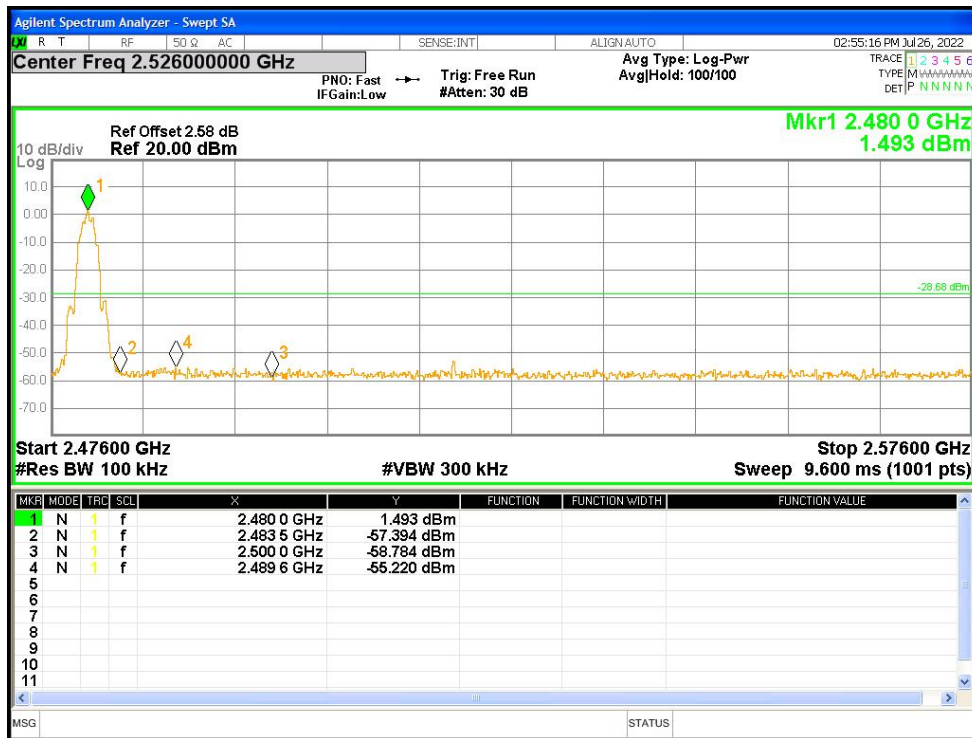
Band Edge NVNT BLE 2M 2402MHz Ant1 Emission



Band Edge NVNT BLE 2M 2480MHz Ant1 Ref



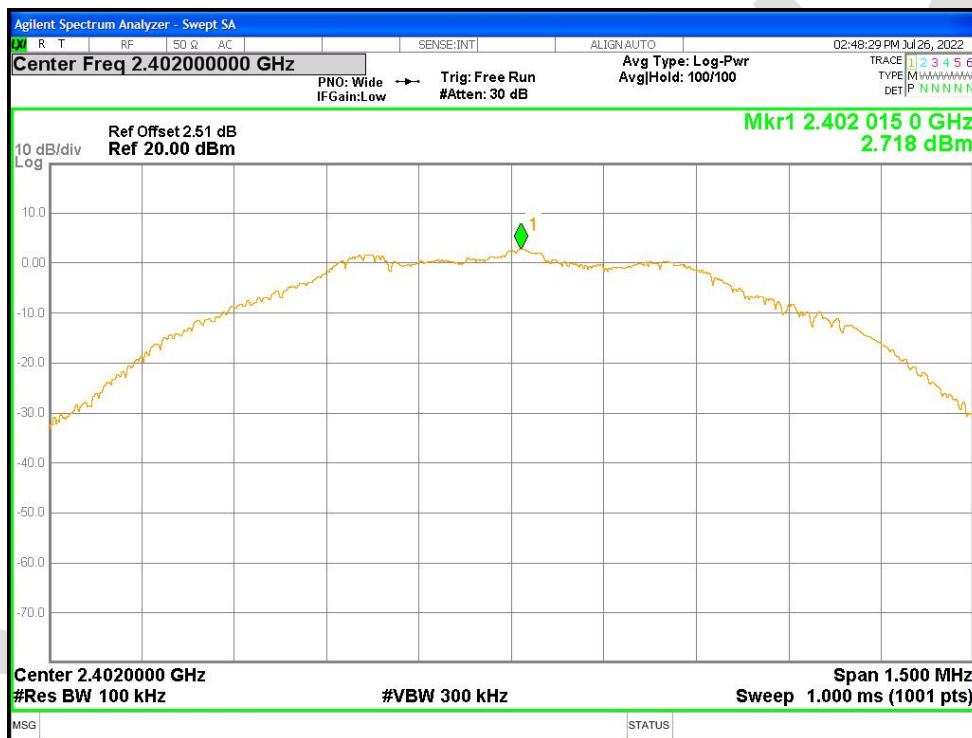
Band Edge NVNT BLE 2M 2480MHz Ant1 Emission



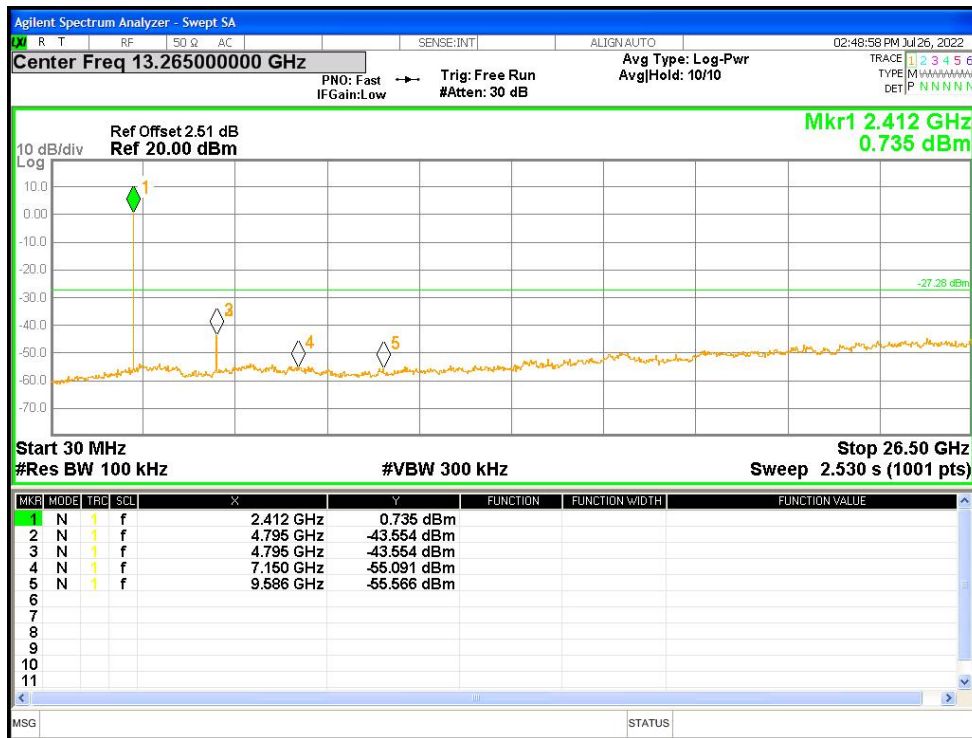
**Conducted RF Spurious Emission**

Condition	Mode	Frequency (MHz)	Antenna	Max Value (dBc)	Limit (dBc)	Verdict
NVNT	BLE 1M	2402	Ant1	-46.27	-30	Pass
NVNT	BLE 1M	2442	Ant1	-45.24	-30	Pass
NVNT	BLE 1M	2480	Ant1	-46.22	-30	Pass
NVNT	BLE 2M	2402	Ant1	-47.87	-30	Pass
NVNT	BLE 2M	2442	Ant1	-47.08	-30	Pass
NVNT	BLE 2M	2480	Ant1	-46.03	-30	Pass

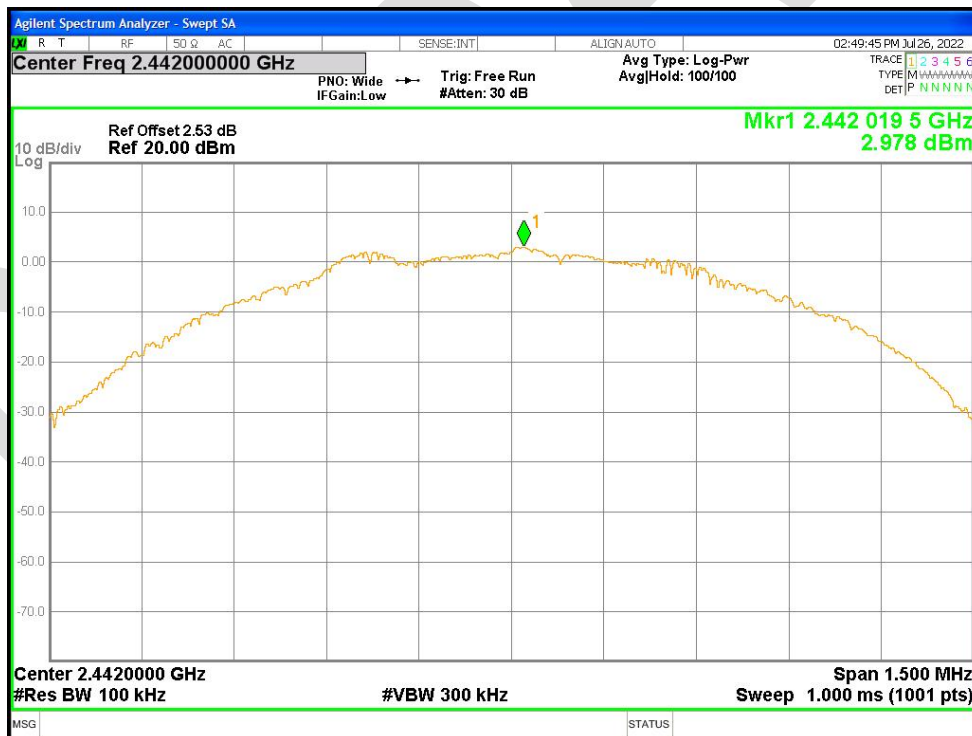
Tx. Spurious NVNT BLE 1M 2402MHz Ant1 Ref



Tx. Spurious NVNT BLE 1M 2402MHz Ant1 Emission

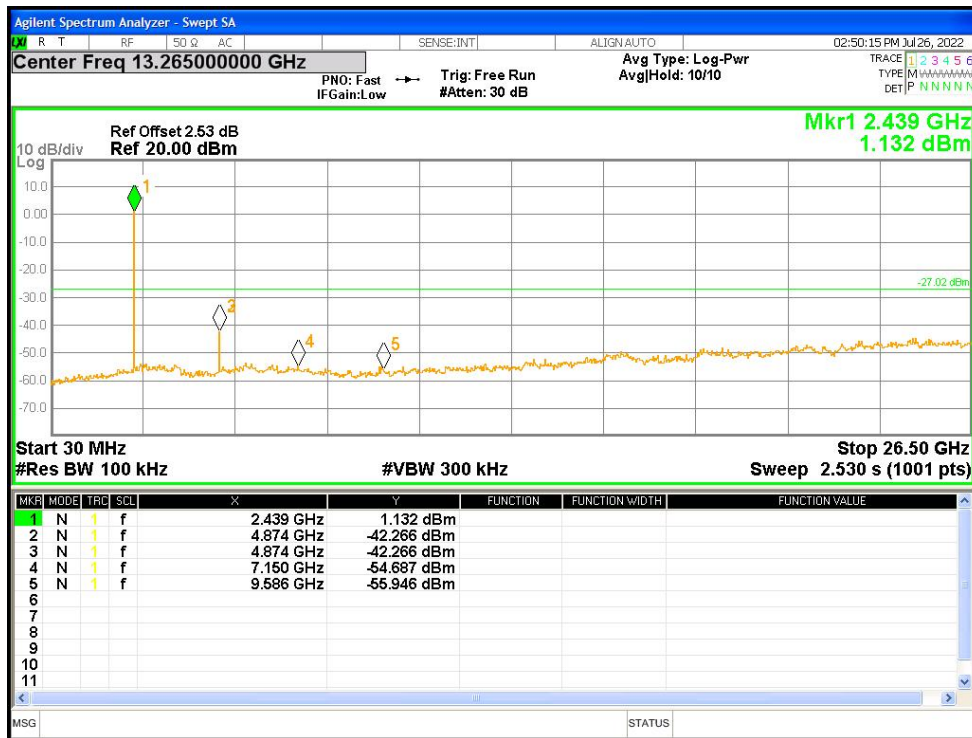


Tx. Spurious NVNT BLE 1M 2442MHz Ant1 Ref

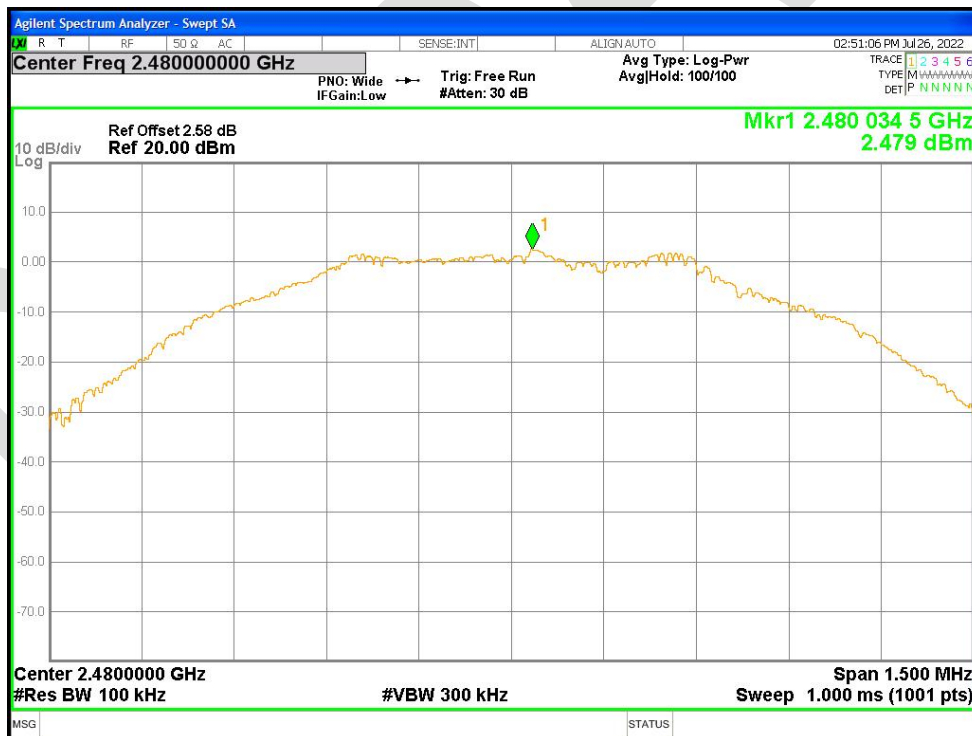


Tx. Spurious NVNT BLE 1M 2442MHz Ant1 Emission

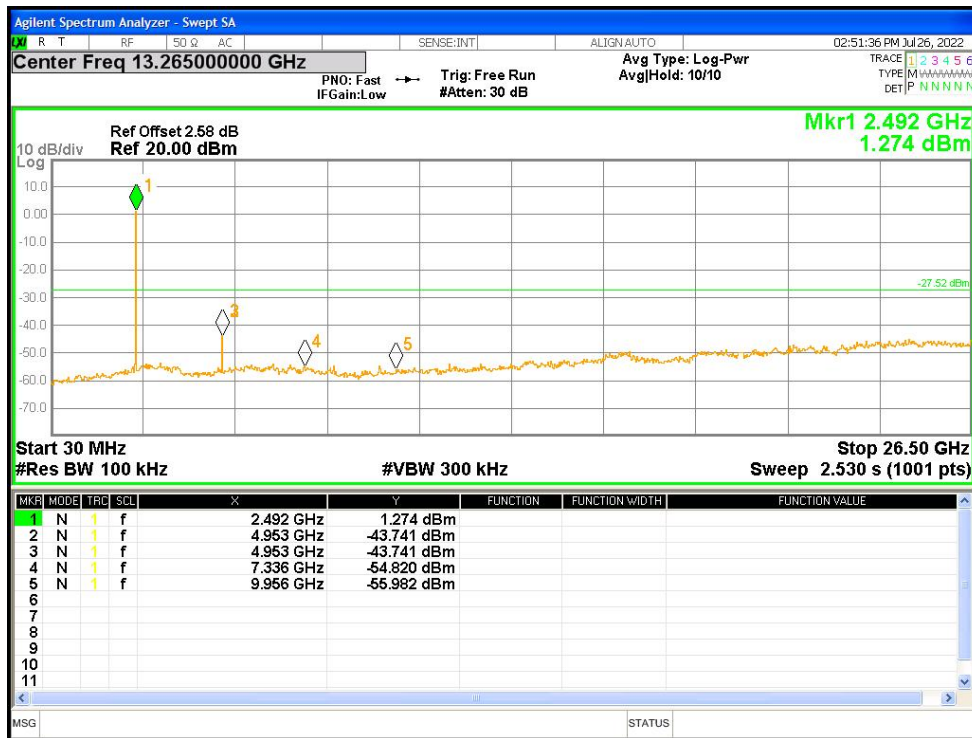




Tx. Spurious NVNT BLE 1M 2480MHz Ant1 Ref



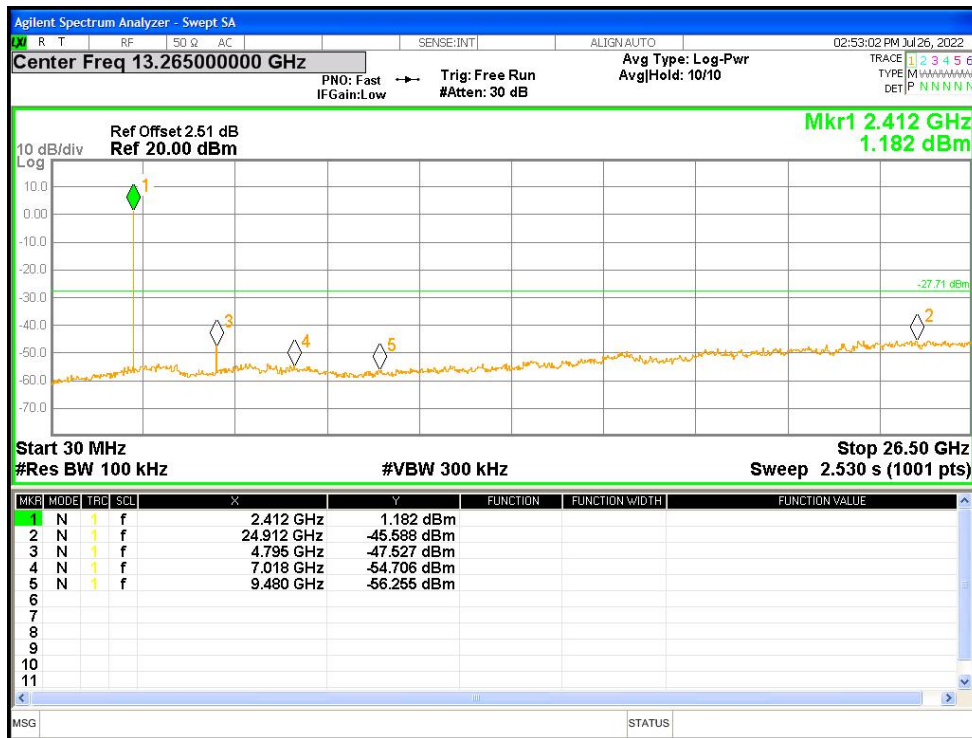
Tx. Spurious NVNT BLE 1M 2480MHz Ant1 Emission



Tx. Spurious NVNT BLE 2M 2402MHz Ant1 Ref



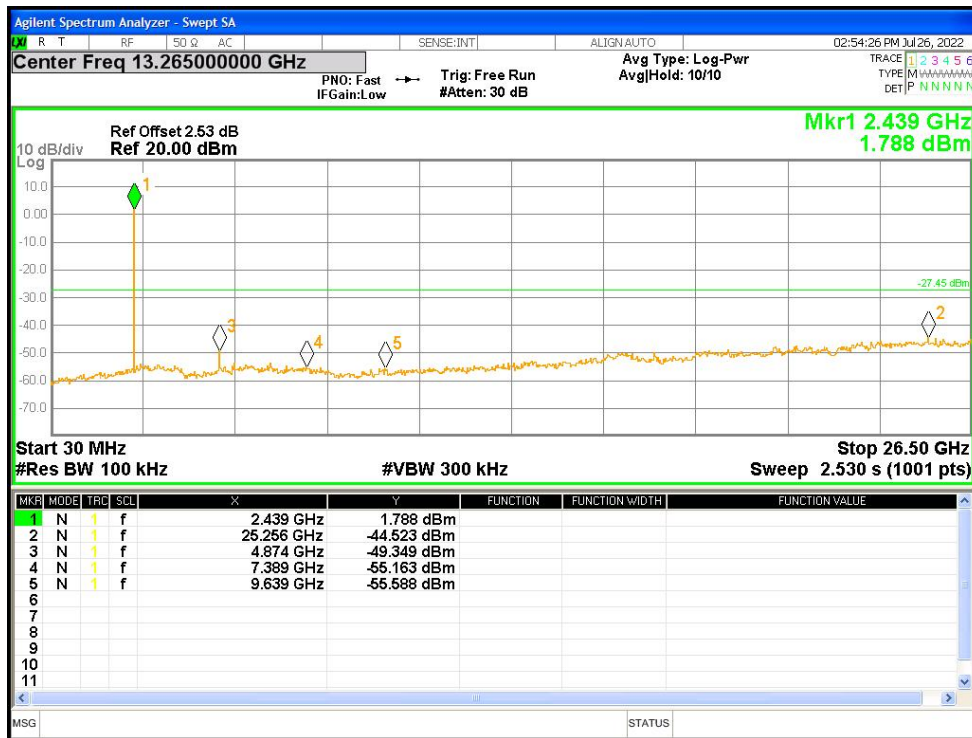
Tx. Spurious NVNT BLE 2M 2402MHz Ant1 Emission



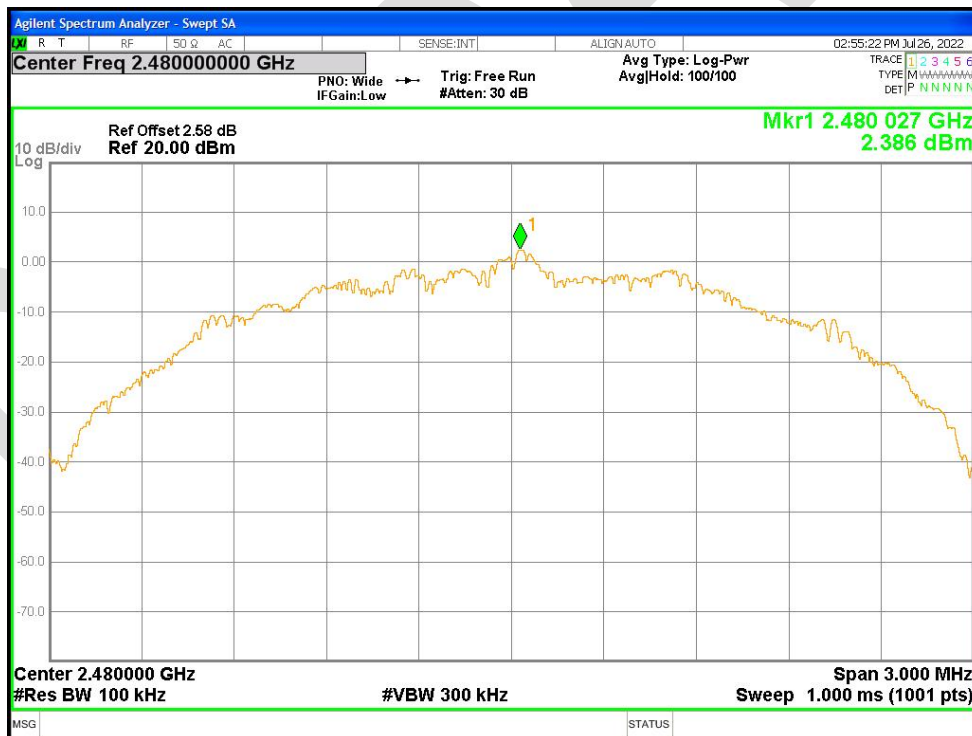
Tx. Spurious NVNT BLE 2M 2442MHz Ant1 Ref



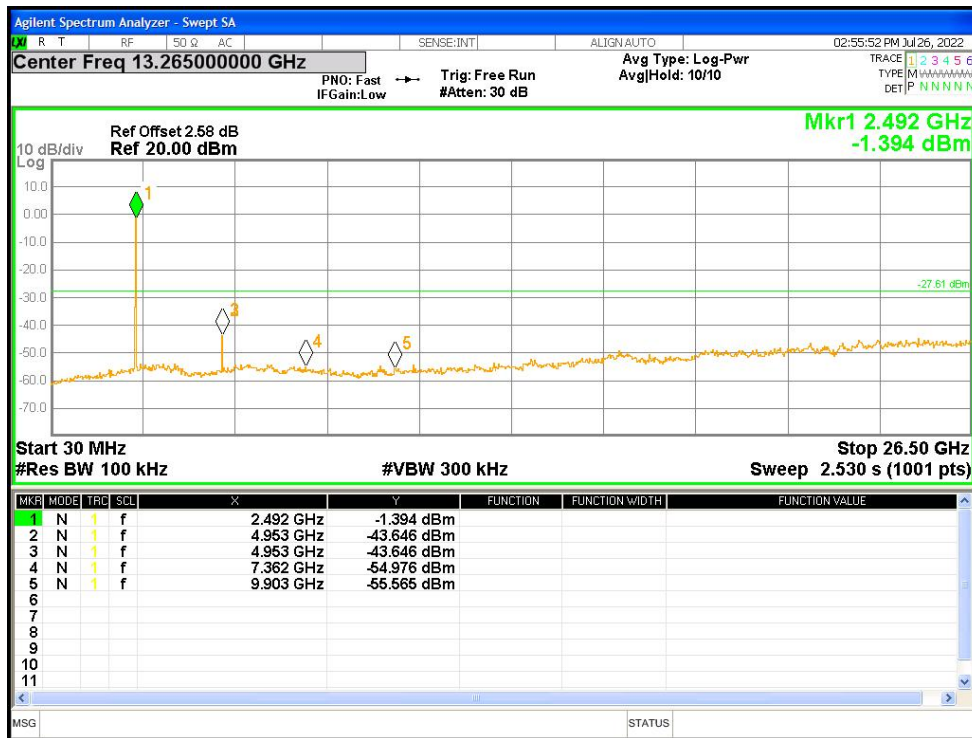
Tx. Spurious NVNT BLE 2M 2442MHz Ant1 Emission



Tx. Spurious NVNT BLE 2M 2480MHz Ant1 Ref



Tx. Spurious NVNT BLE 2M 2480MHz Ant1 Emission

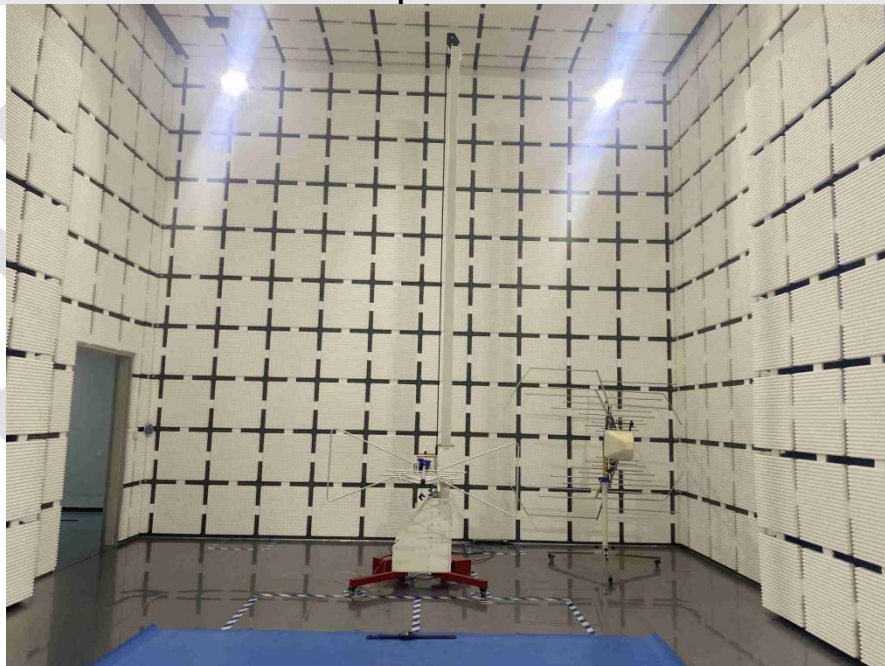


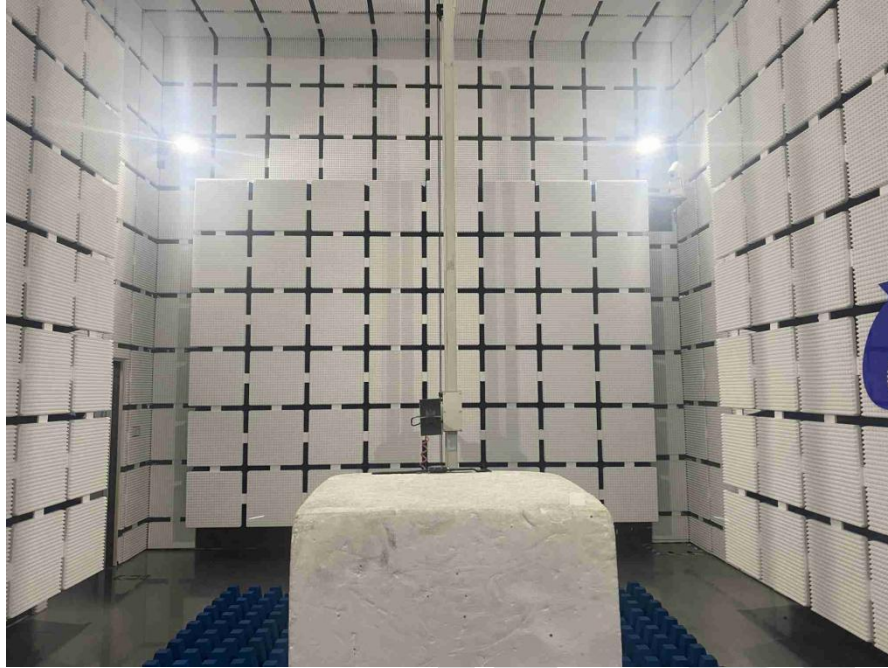
## APPENDIX A: PHOTOGRAPHS OF TEST SETUP

### Conducted Emissions at AC Power Line (150kHz-30MHz)



### Radiated Spurious Emissions



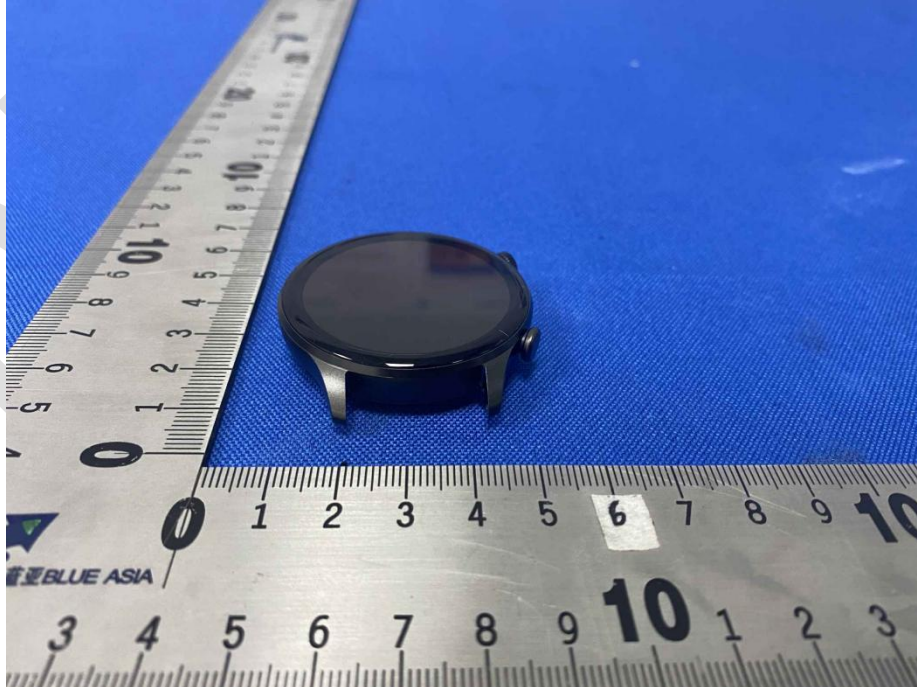


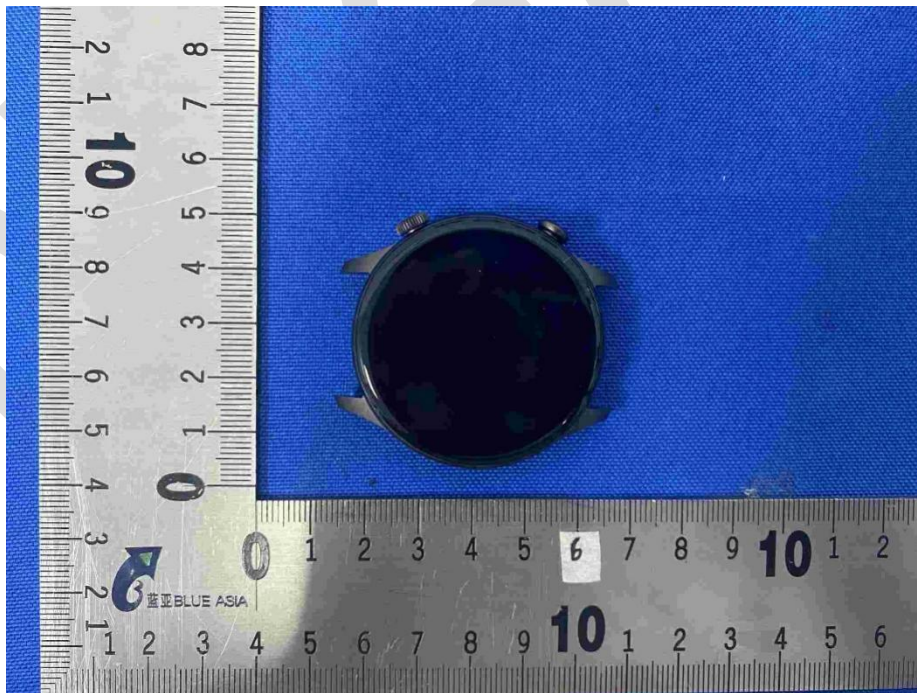
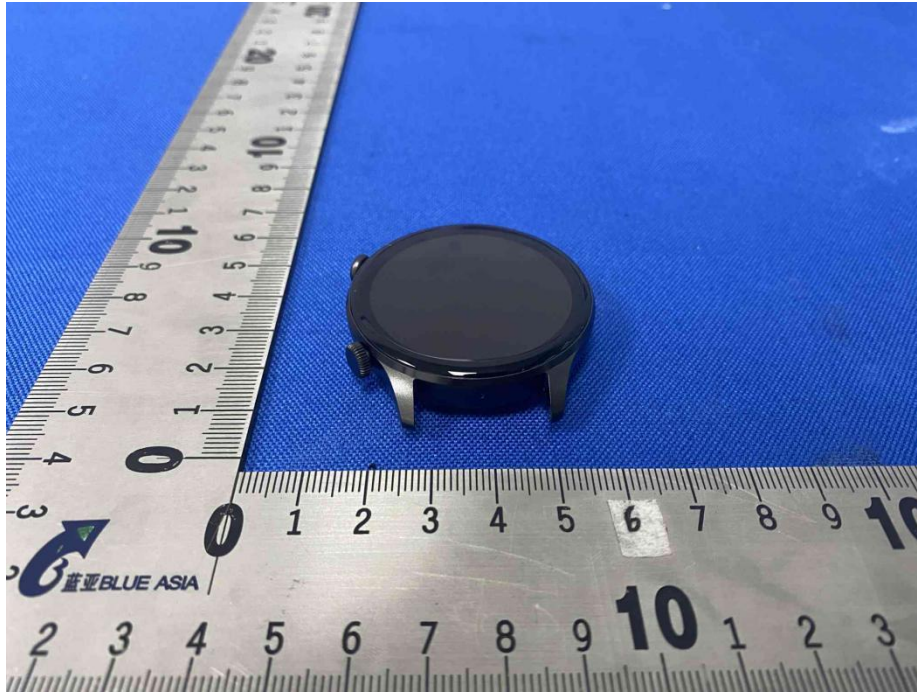
BlueAsia

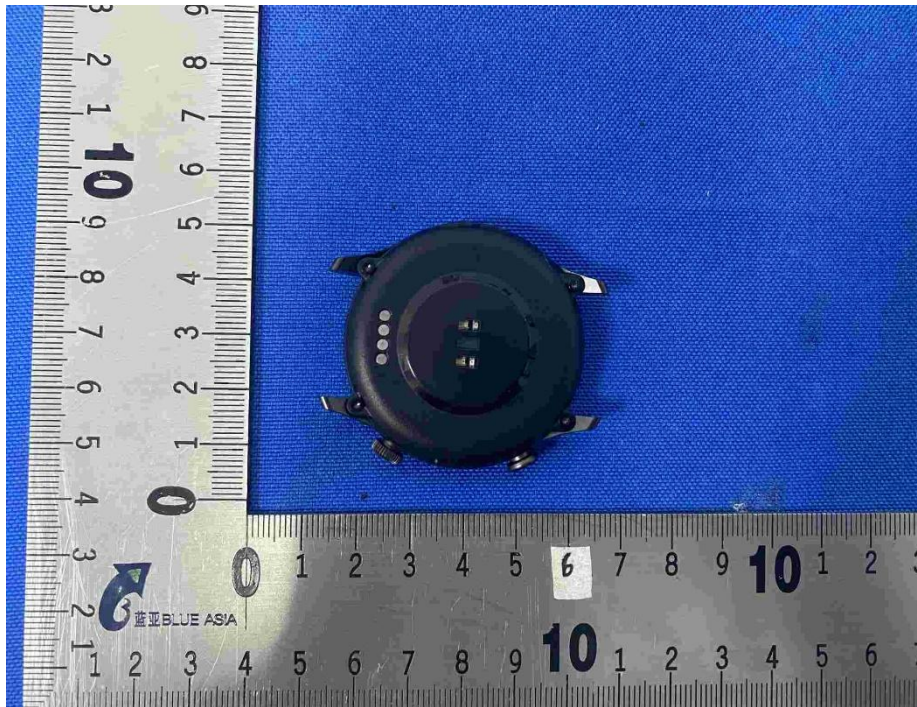
### APPENDIX B: PHOTOGRAPHS OF EUT

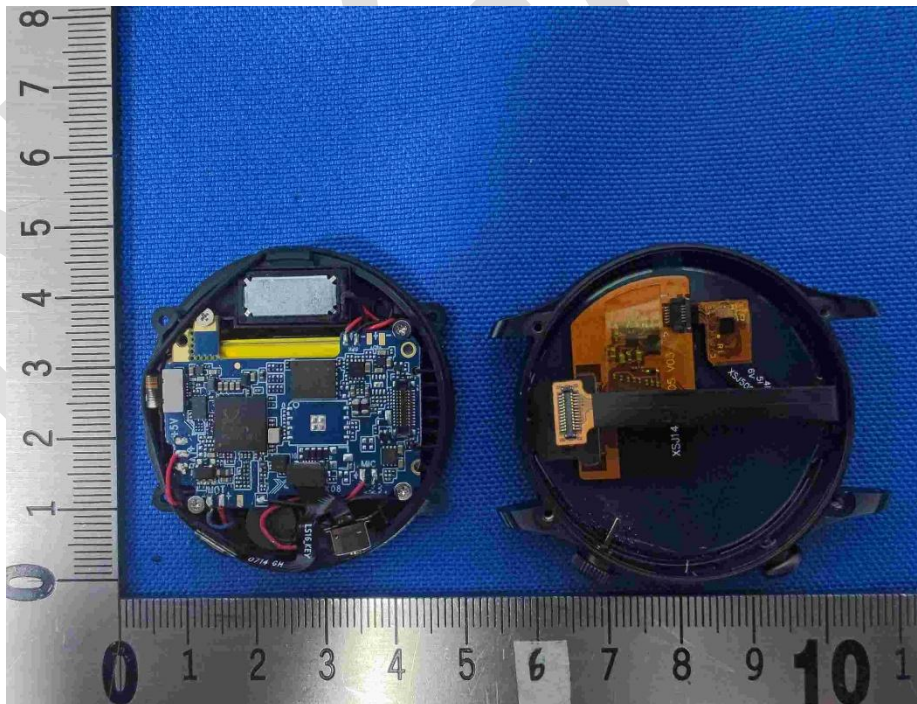


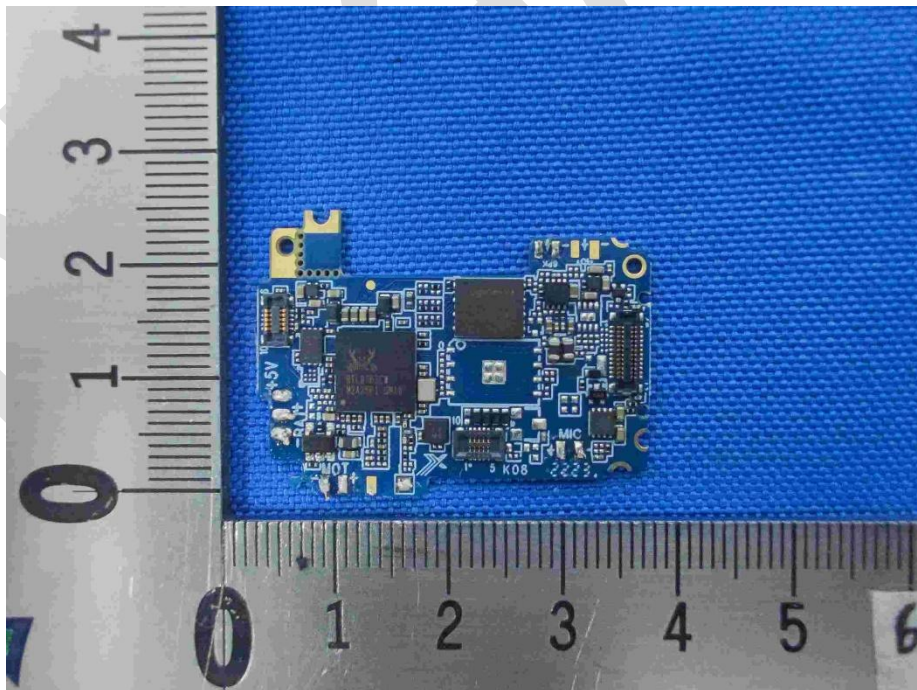
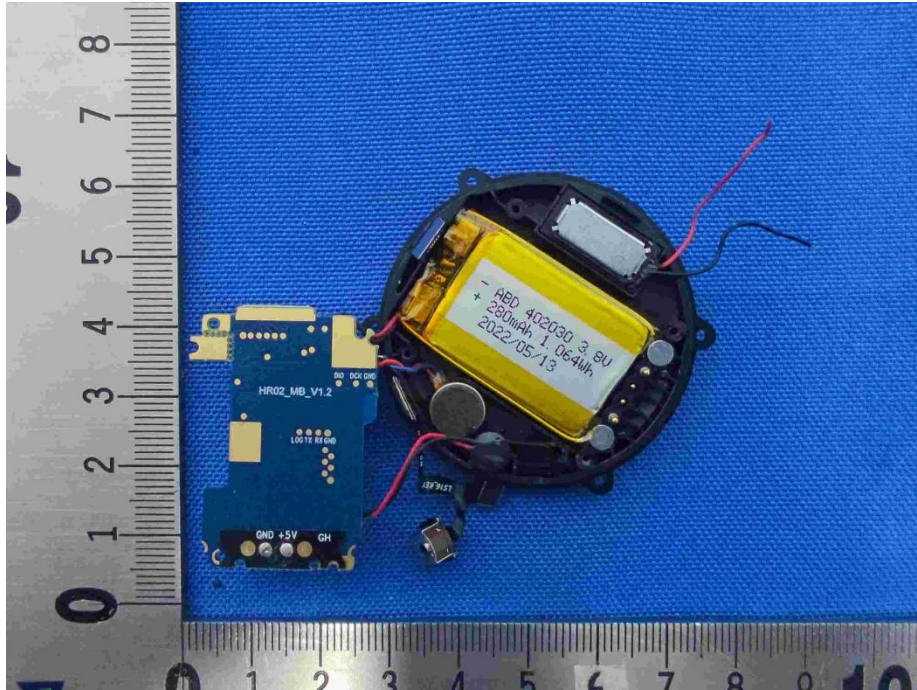


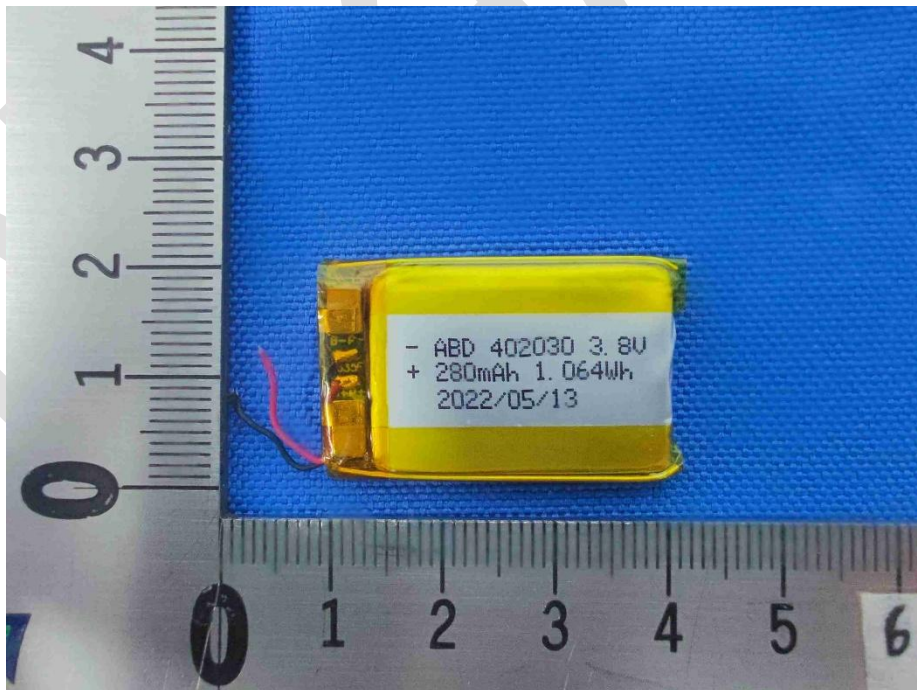
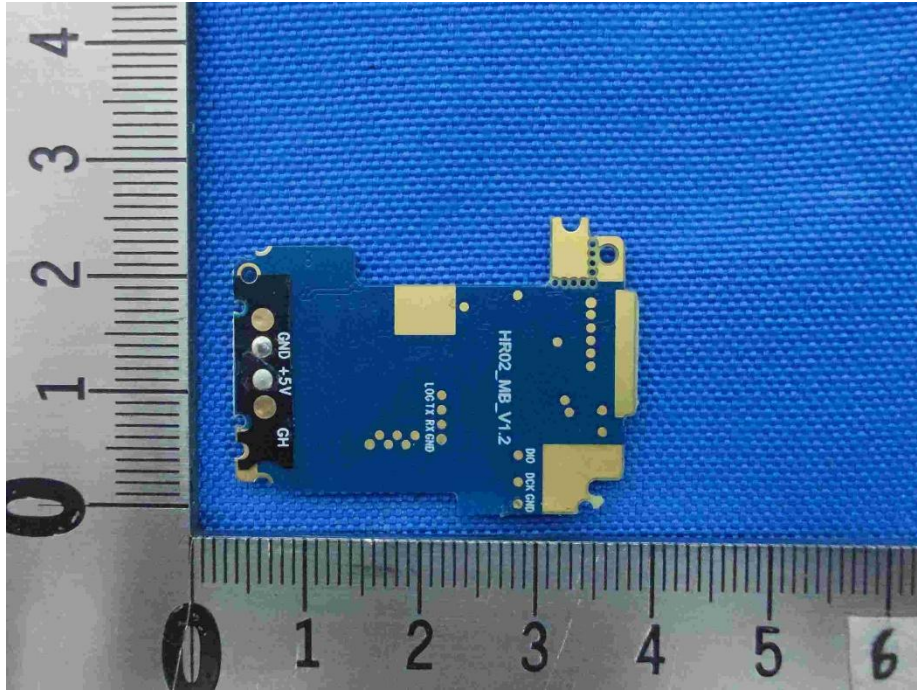


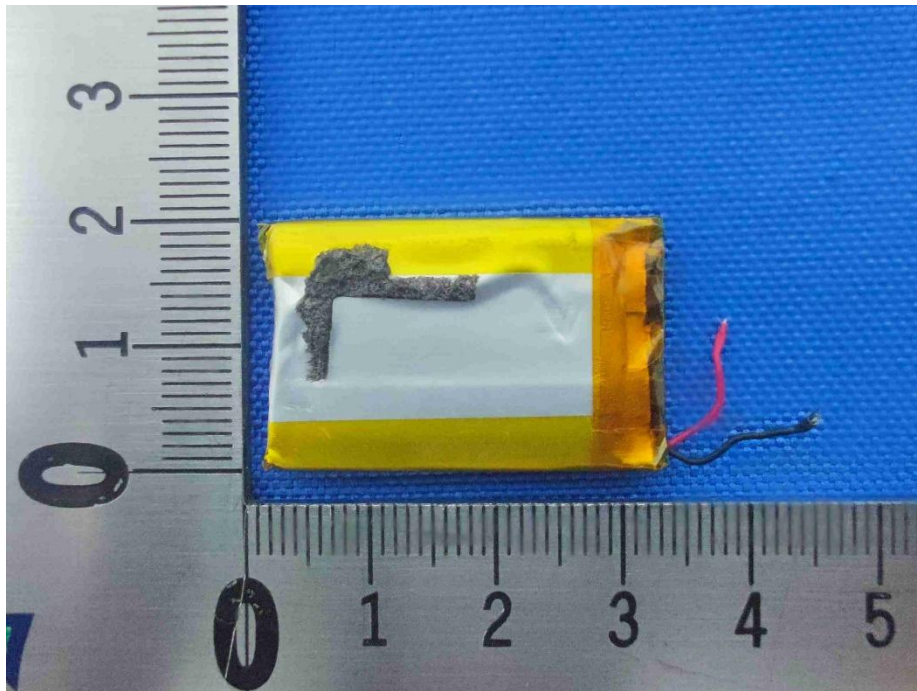












**----END OF REPORT----**

The test report is effective only with both signature and specialized stamp, The result(s) shown in this report refer only to the sample(s) tested. Without written approval of BlueAsia, this report can't be reproduced except in full.