



Topositive Internet of Things

Shenzhen Kingwear Technology Development Co., Ltd. Longhua Branch

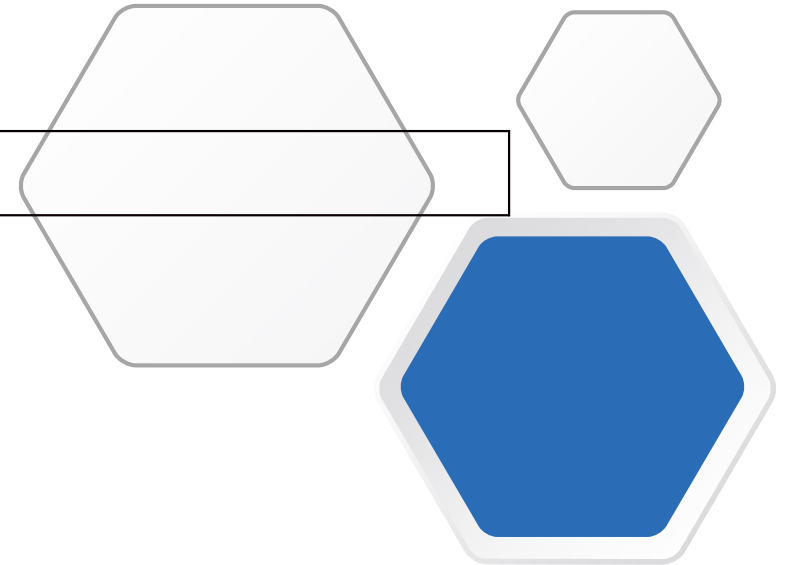
add: 501,building A2, Silicon valley power intelligent terminal Industrial Park ,
20Dafu Industrial Zone, Dafu commnity, Guanlan stree, Longhua District ,Shenzhen

The FS002 Antenna Test Report

model: FS002



Radio frequency: Li Gong Time: 2024.01.27





catalogue
CONTENTS

01

basic information

Test equipment, complete machine data,
antenna match

02

test data

Illustration of antenna assembly for passive /
active test data
Environmental treatment diagram

03

Planning summary

Project overview



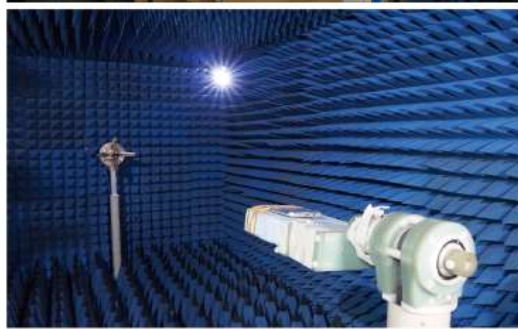
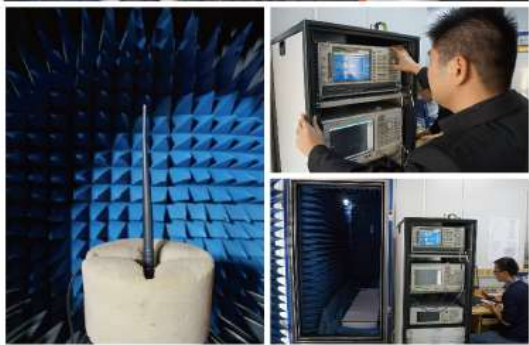
basic information:

Basic information

【SATIMO】



【广屏】



test macro

- SATIMO, Agilent E5071C, Anritsu MT8820C, CMW500, StarPointSP9500

SATIMO暗室-配备

Anritsu综测仪8820c/Agilent网分5071C/Agilent综测仪E4438C

广屏暗室-配备

Agilent-综测仪8960/罗德-cmw500

调试网分

Agilent 网分5071C



basic information:
Basic information



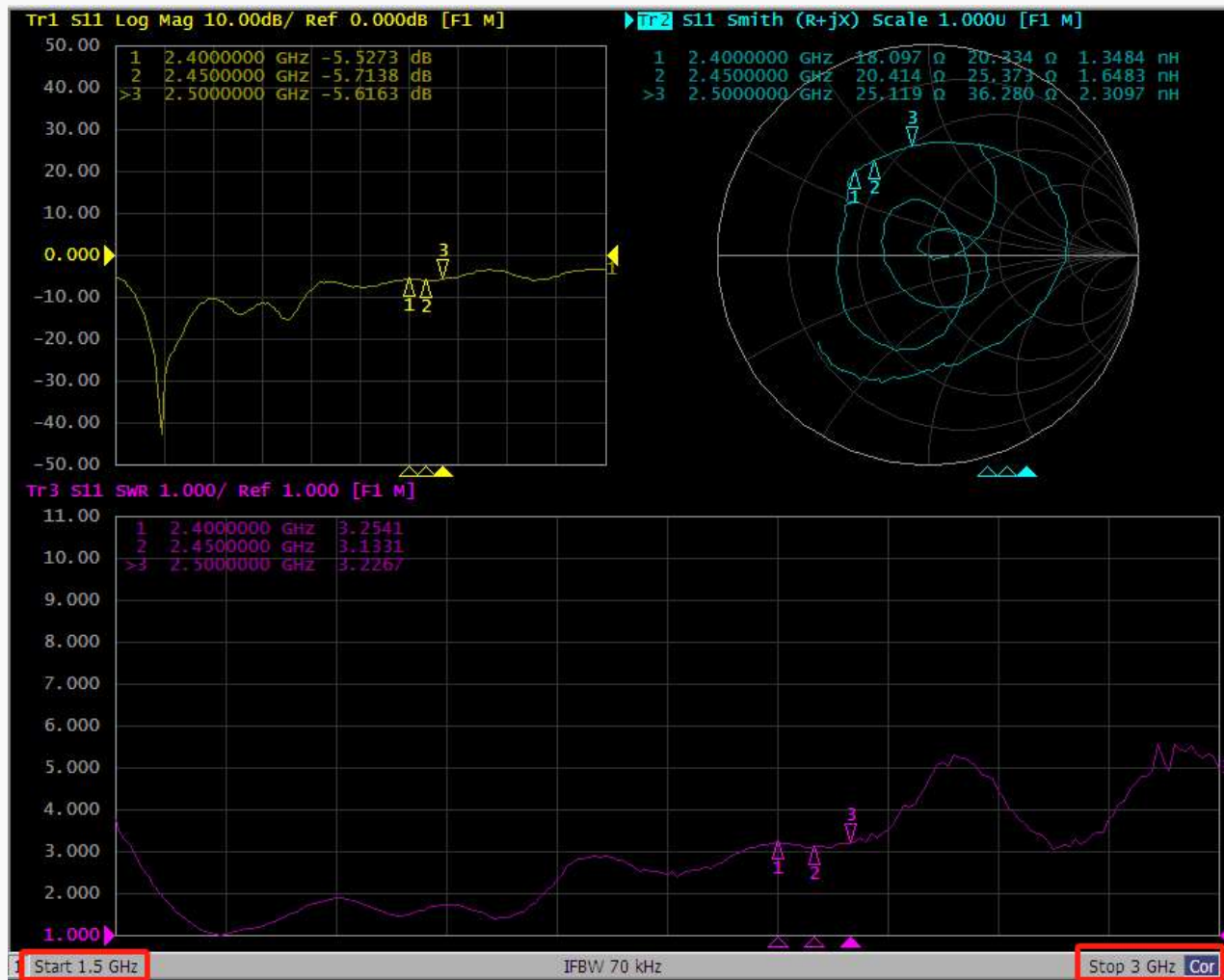
Complete machine data: machine data

- Customer name: Qiwei Intelligence
- Project name: FS002
- Frequency band information: BT
- Antenna specification: 18*2.5mm



test data:testdata

BT antenna passive map- (SWR / Log Mag / Smith)





Call-measured data:



test mode	Wear the watch to raise the hand to the chest test disconnect			
System model	IOS (iPhone XS Max)		Android (HUAWEI Mate 50 Pro)	
Indoor / outdoor	indoor	outdoor	indoor	outdoor
Connection distance	12 Meters	8 Meters	15 Meters	10 Meters



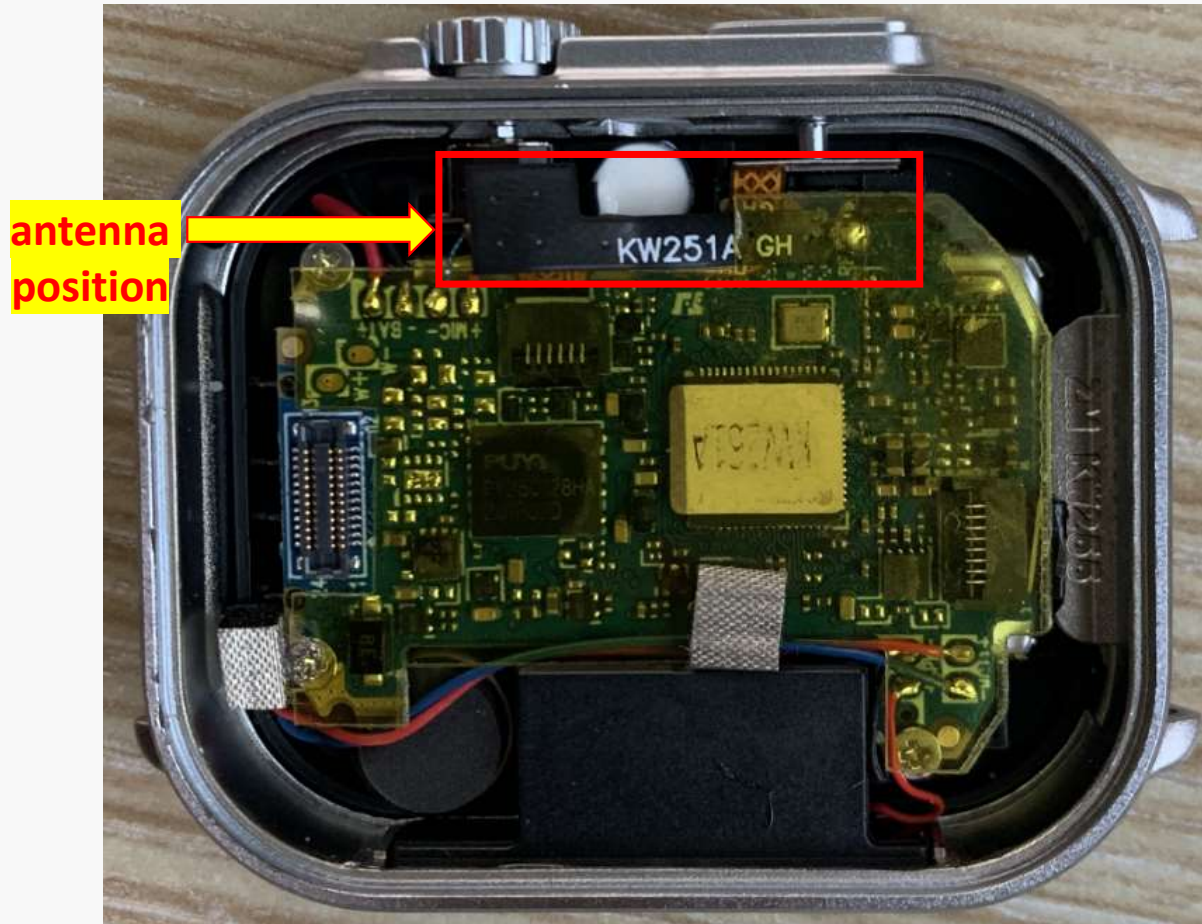
Test data of playing music:



test mode	Wear the watch to raise the hand to the chest test disconnect			
System model	IOS (iPhone XS Max)		Android (HUAWEI Mate 50 Pro)	
Indoor / outdoor	indoor	outdoor	indoor	outdoor
Connection distance	14 Meters	10 Meters	17 Meters	12 Meters



antenna position:





Planning summary

Planning to summarize

The above report is FS002 customer machine, passive test report.



THANK YOU

May you have a calm heart in the
complicated and noisy world

- -Tv

