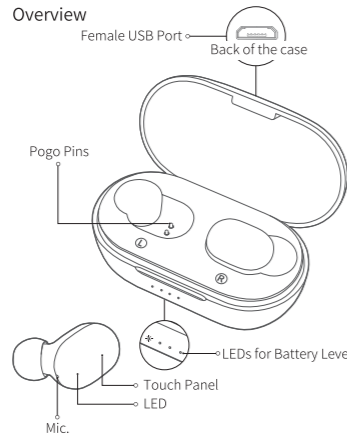


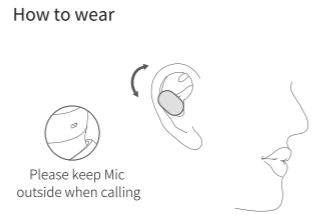


# Haylou-GT1 XR

TRULY WIRELESS EARBUDS  
User Manual

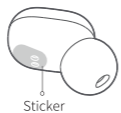


**What's in the Box**  
Eartips × 3 pairs (medium eartips have been assembled), earbuds, charging case, USB cable, user manual



When calling, adjust Mic towards mouth to gain better talking experience.

**How to Charge**  
Prior to using, please peel off sticker covering the pogo pins and top up both earbuds and charging case.



**Power-on**  
Open lid to power on earbuds.  
If earbuds are out of case, keep touching both panels for 2s to power on (LED glows solid white)



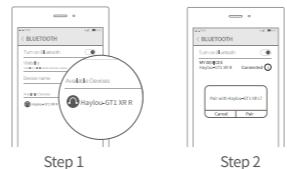
**Power-off**  
Close lid to power off earbuds.  
Keep touching panels for 4s to power off (LED glows solid red for 2s).



**Ignore Call**  
Keep touching panel for 1s to ignore call.



**Stereo Mode**  
Auto connection: take up both earbuds from the case. On cellphone, search for Haylou-GT1 XR R/L and tap to connect. Notice will show up on cellphone in 2s, tap to connect the other earbud.  
If earbuds fail to connect to cellphone, please put earbuds back to the case and repeat the above steps. Earbuds will auto reconnect to the last device in connectivity records, if any. (Bluetooth faculty has to be activated.)  
Note: earphones have been setted to factory when shipping out.



Manual pairing: manually power on two earbuds. On cellphone, search for Haylou-GT1 XR R/L when earbud blinks white promptly. Tap to connect.

**Mono Mode**  
Auto pairing: take out one earbud from the case to power on it. Its LED will soon blink white promptly then search for Haylou-GT1 XR R/L on cellphone and tap to connect. Once powering on, earbud will auto reconnect to last device in connectivity records, if any (Bluetooth faculty has to be activated).  
Manual pairing: manually power on one earbud. Its LED will soon blink white flash then search for it on cellphone and tap to connect.

**Basic Parameters**  
Operation range: 10m (with no obstacle)  
Battery capacity: 43mAh (single earbud)  
Charging time: approx. 1.5hr  
Calling time: approx. 4hr  
Standby time: approx. 130hr  
Input parameter: 5V = 100mA  
Battery type: li-ion  
Bluetooth version: 5.0

**Charging Case**  
Input parameter: 5V = 500mA  
Output parameter: 5V = 150mA  
Charging time: approx. 3hr  
Standby time: approx. 4 months  
Battery capacity: 800mAh  
Battery type: li-ion  
All technical data are subject to practical performance

- Functions**
- 
- Double touch left earbud  
Skip track backward
  - Double touch right earbud  
Skip track forward
  - Touch either earbud  
Pause/resume to play music
  - Double touch either earbud  
Answer/end incoming call
  - Keep touching either earbud for 1s  
Ignore incoming call
  - Triple touch left earbud  
Activate voice assistant (standby/playing)
  - Keep touching either earbud for 1s  
Switch voice output between earbuds and cellphone (calling)

**Switch Between Mono Mode and Stereo Mode**  
Pick up two earbuds to auto enter stereo mode and push one back to enter mono mode. Or you can pick it up again to resume stereo mode.

**Quick Connection on Phone**  
Turn on Bluetooth faculty on your phone. Open charging case's lid, tap pop-up window on phone to connect earbuds.  
Note: for Quick Connection on Phone, please update your phone's system to the latest version. Only part of phones support this function.

