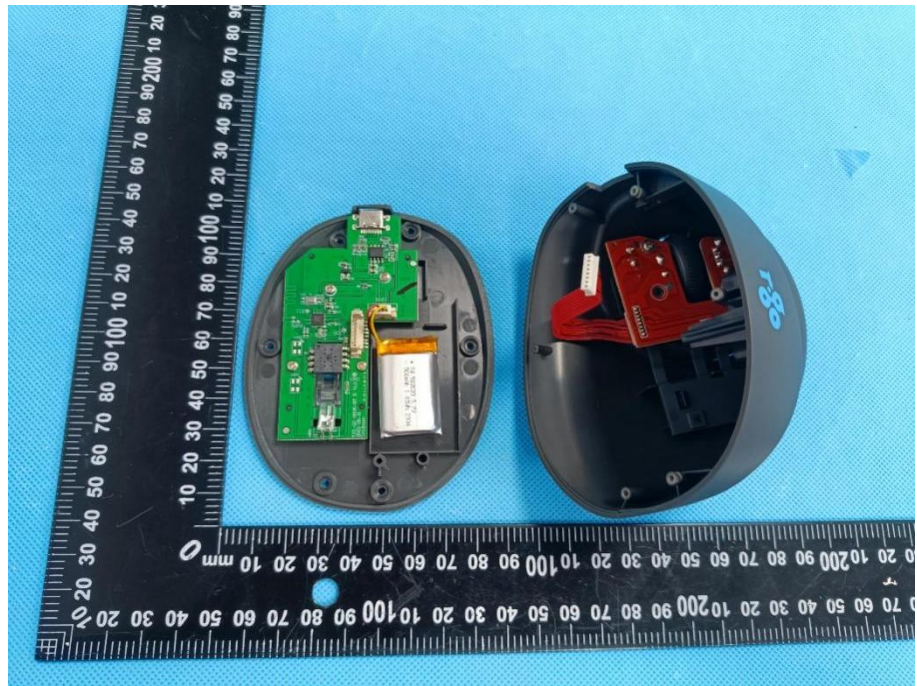
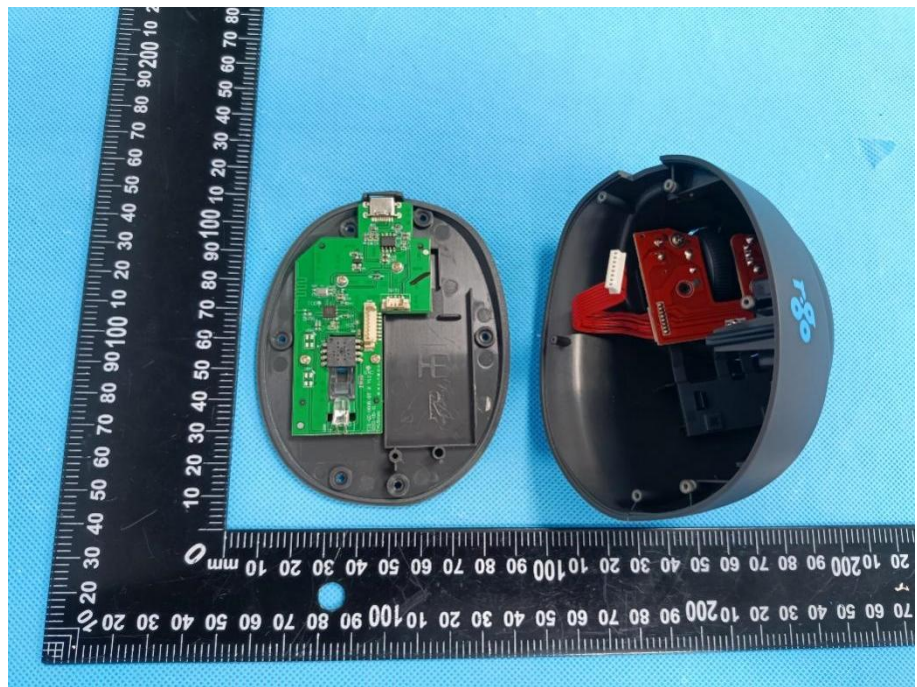


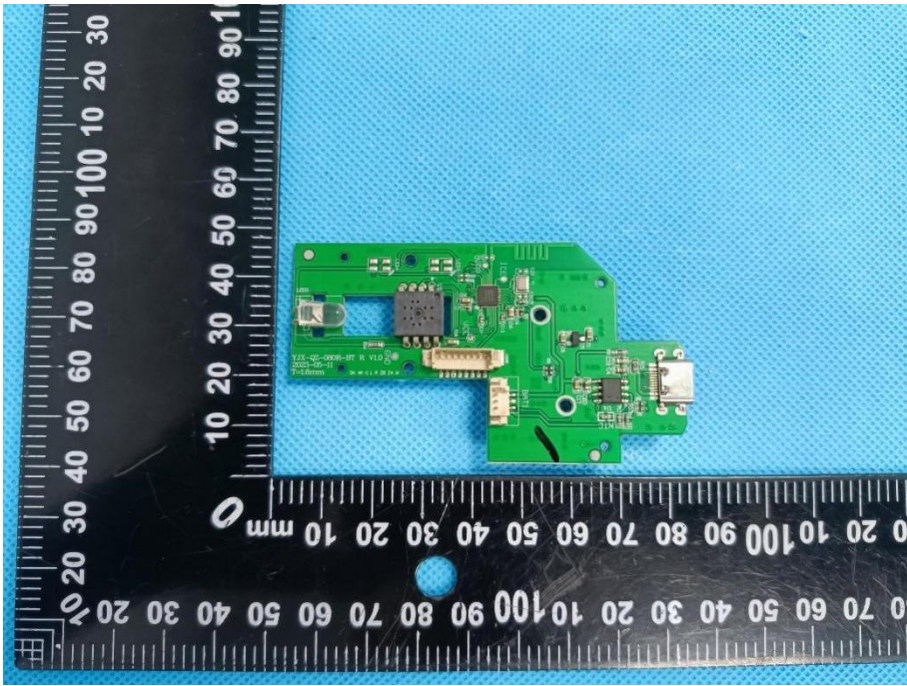
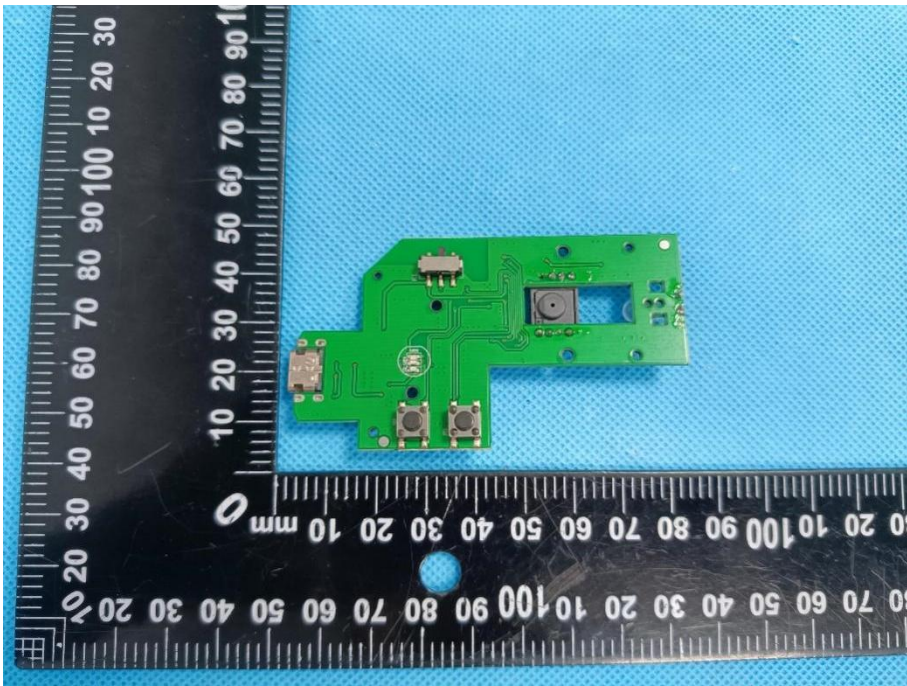
EXHIBIT 3 - EUT INTERNAL PHOTOGRAPHS

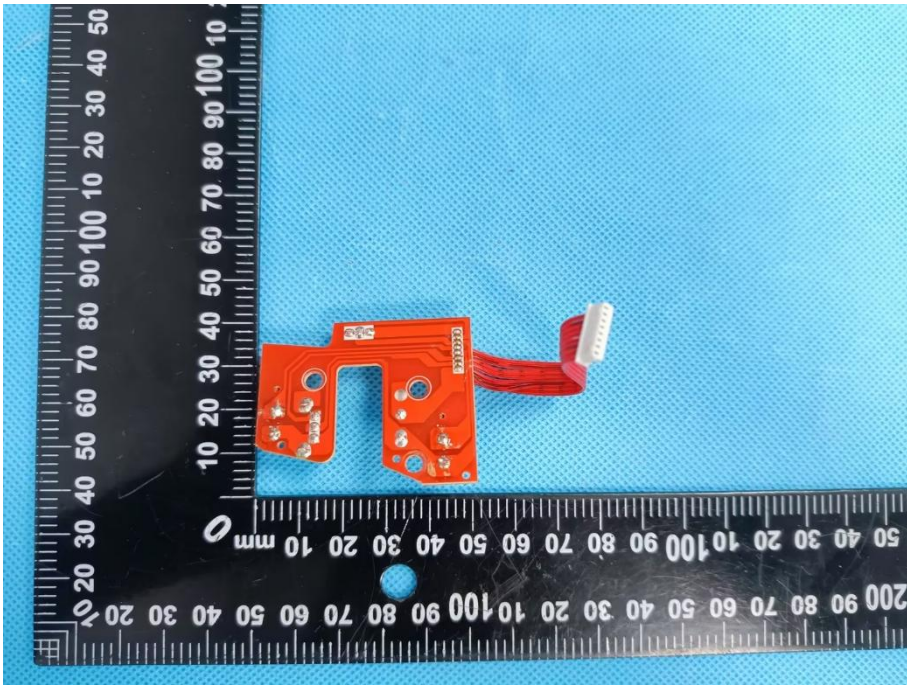
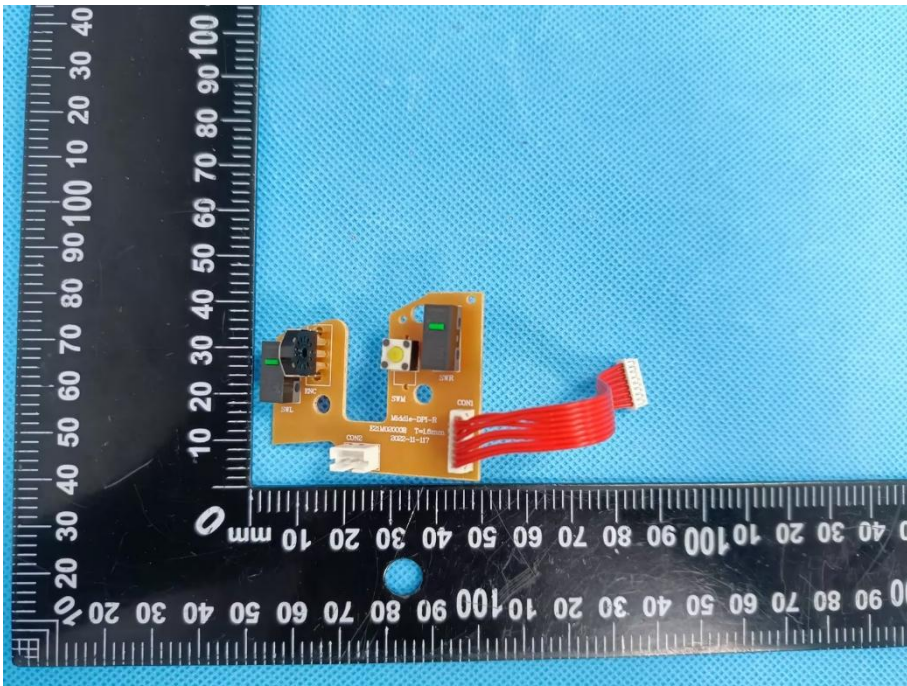
EUT Housing and Board View 1



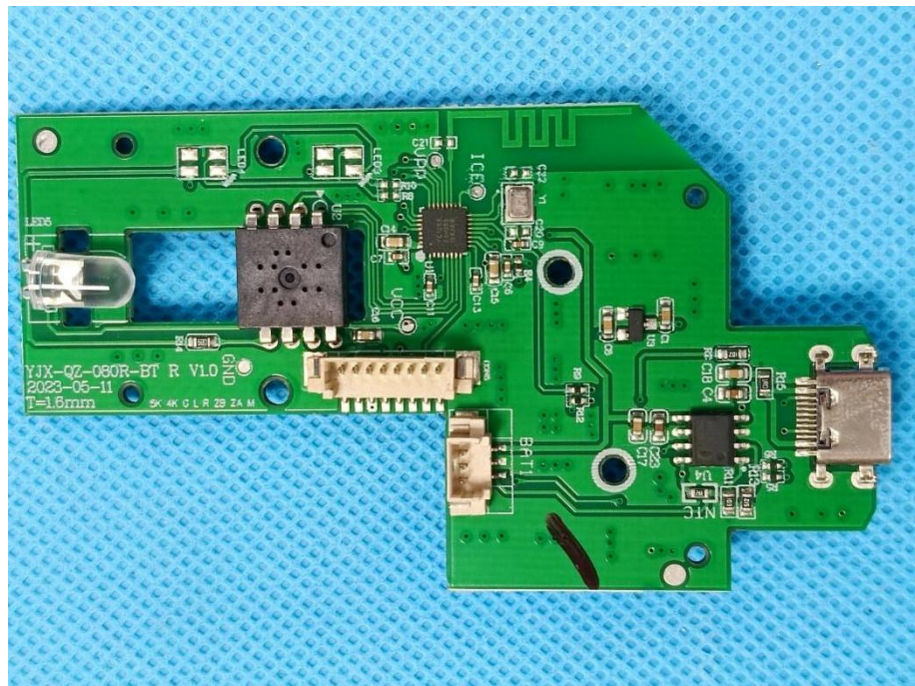
EUT Housing and Board View 2



<p>Solder Board-Component View 1</p>	 <p>A photograph of a green solder board component, labeled 'View 1'. The component is an irregularly shaped printed circuit board (PCB) with various electronic components, including a central chip, several surface-mount components, and a connector on the right side. It is placed on a blue textured surface next to a black ruler with white markings. The ruler shows measurements in millimeters, with the component's length being approximately 100 mm and its width around 40 mm.</p>
<p>Solder Board-Component View 2</p>	 <p>A photograph of the same green solder board component, labeled 'View 2'. This view shows the opposite side of the component. It features a large square cutout in the center, several surface-mount components, and a connector on the left side. The component is placed on the same blue textured surface next to the same black ruler. The ruler indicates the component's dimensions are consistent with View 1.</p>

<p>Solder Board-Component View 3</p>	 <p>A photograph of a red solder board component, labeled 'Solder Board-Component View 3'. The component is a small, rectangular printed circuit board (PCB) with a red solder mask. It features several surface-mounted components, including a small black integrated circuit (IC) and several resistors. A red flexible ribbon cable is attached to the right side of the board. The component is placed on a blue textured surface next to a black ruler with white markings for scale. The ruler shows measurements in millimeters and centimeters.</p>
<p>Solder Board-Component View 4</p>	 <p>A photograph of a yellow solder board component, labeled 'Solder Board-Component View 4'. The component is a small, rectangular PCB with a yellow solder mask. It features several surface-mounted components, including a small black IC, a green component, and a white component. A red flexible ribbon cable is attached to the right side of the board. The component is placed on a blue textured surface next to a black ruler with white markings for scale. The ruler shows measurements in millimeters and centimeters.</p>

**Solder
Board-Component
View 5**



Antenna View

