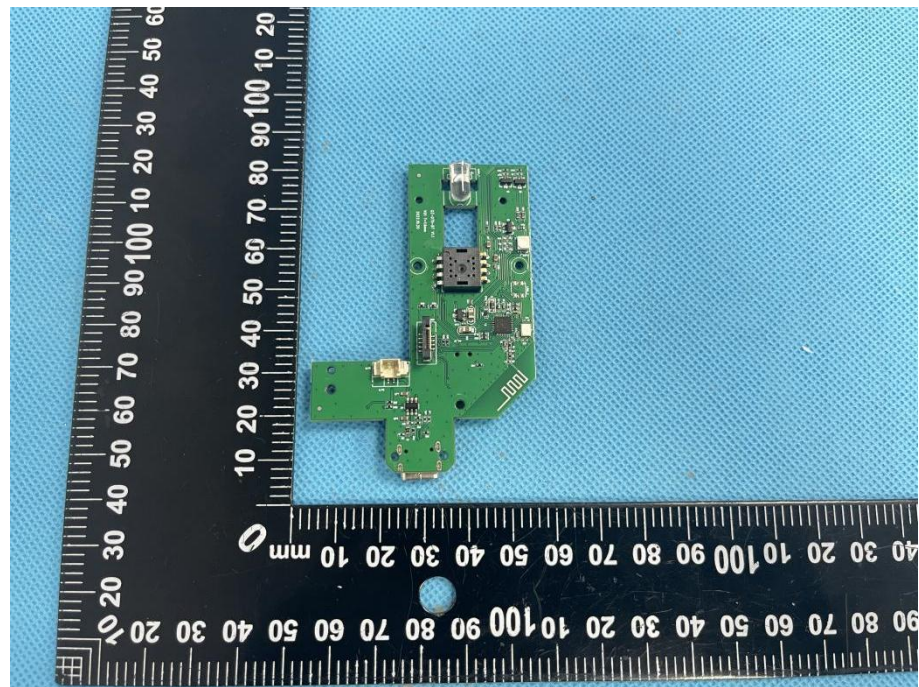



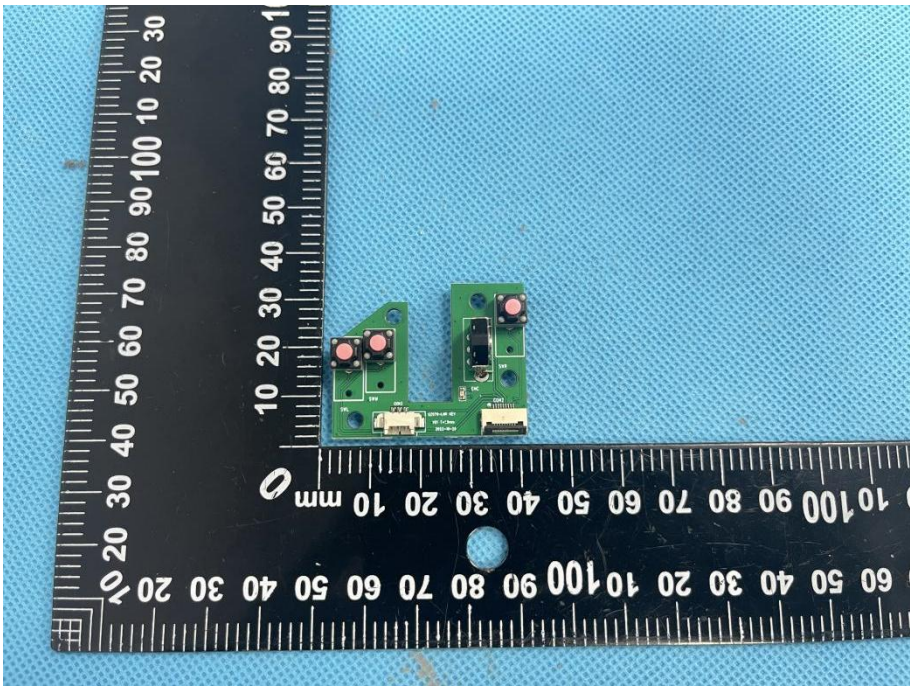
EXHIBIT 3 - EUT INTERNAL PHOTOGRAPHS

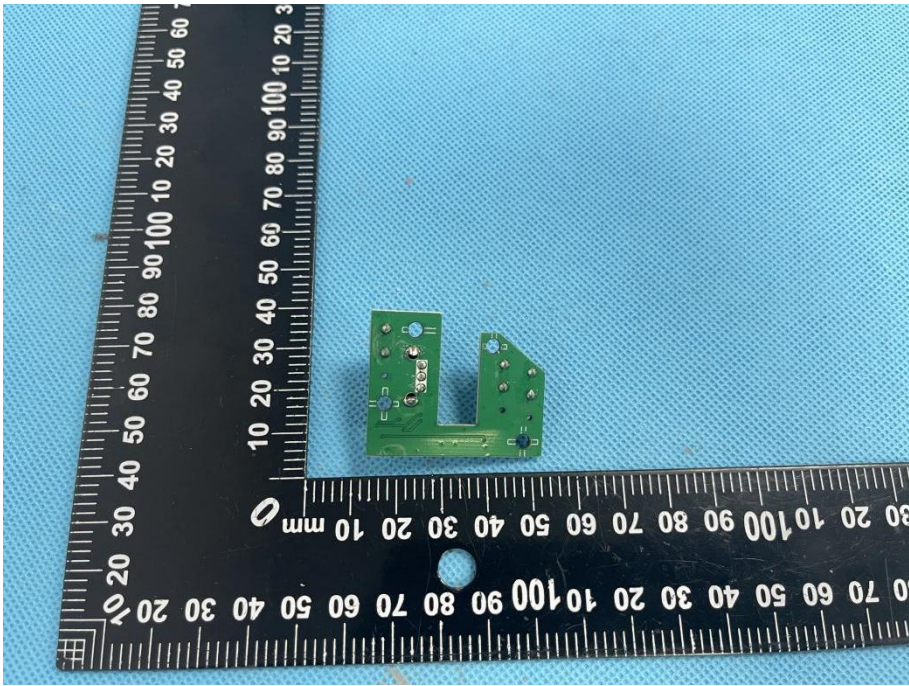
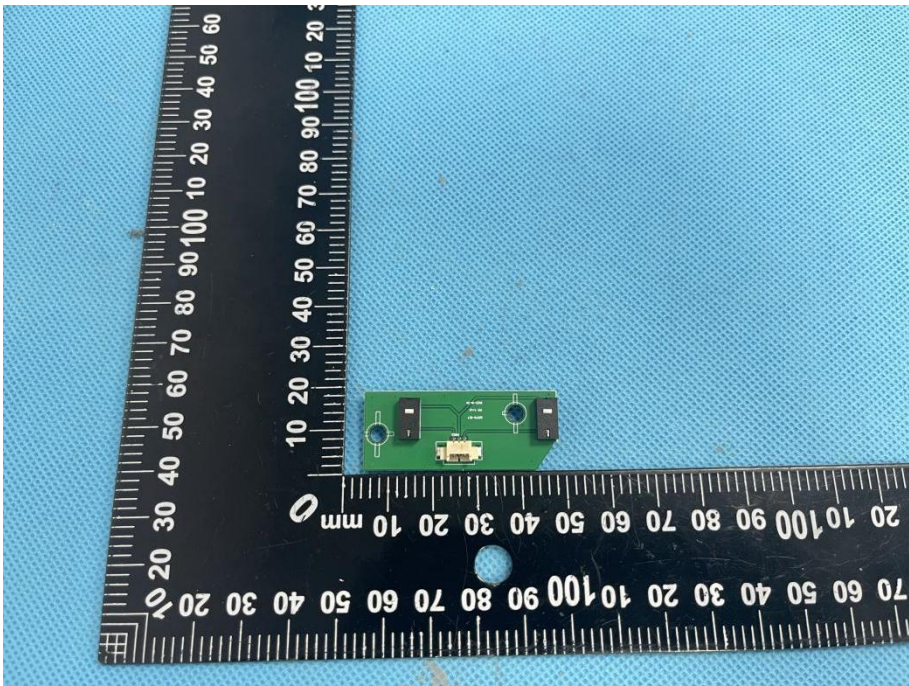
EUT Housing and Board View 1

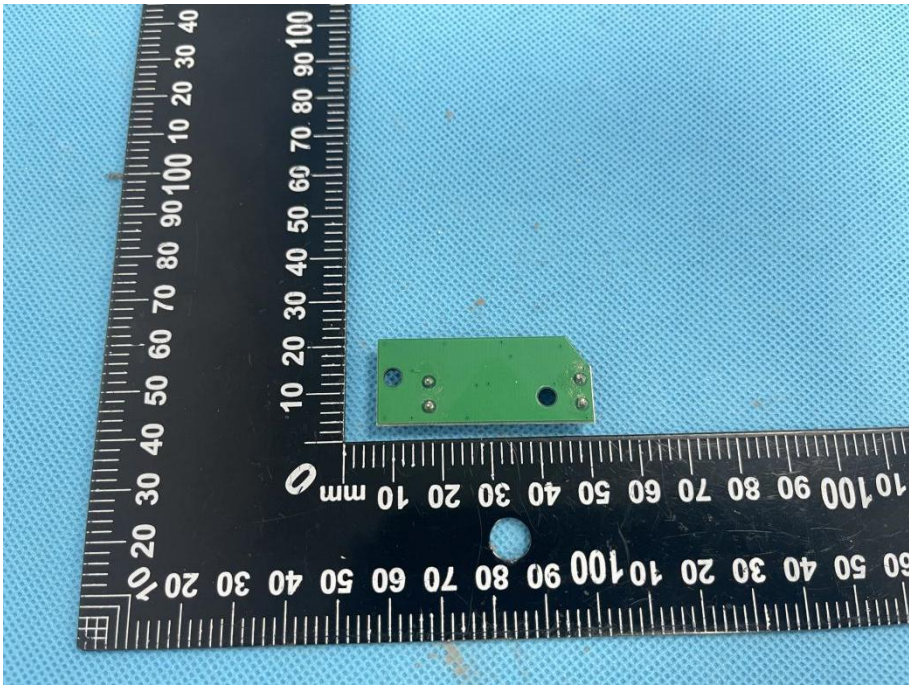
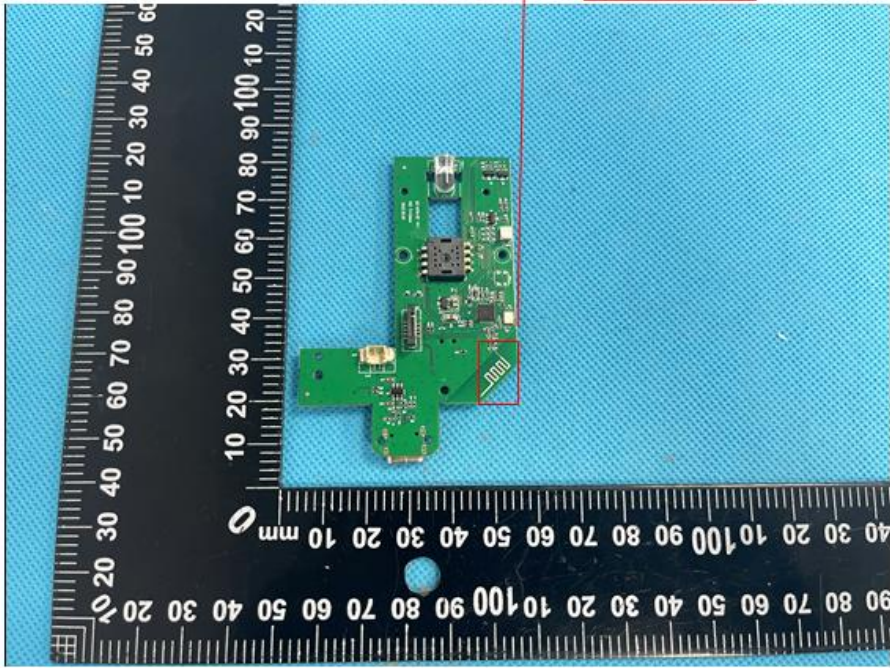


Solder Board-Component View 1



<p>Solder Board-Component View 2</p>	 A photograph of a green printed circuit board (PCB) component, labeled 'View 2'. The component is L-shaped and features a central black square component, likely a microcontroller or sensor, with two small circular components on either side. It is placed on a blue textured surface next to a black ruler with white markings. The ruler shows measurements in millimeters, with the component's length being approximately 100 mm and its width approximately 30 mm.
<p>Solder Board-Component View 3</p>	 A photograph of the same green PCB component, labeled 'View 3'. This view shows the component from a different angle, highlighting two red circular components (possibly LEDs or sensors) mounted on the board. The component is placed on the same blue textured surface next to the same black ruler. The ruler shows measurements in millimeters, with the component's length being approximately 100 mm and its width approximately 30 mm.

<p>Solder Board-Component View 4</p>	 A photograph of a small green printed circuit board (PCB) component, labeled 'View 4'. The component is L-shaped and features several surface-mounted components, including a small integrated circuit (IC) and several resistors. It is placed on a blue textured surface next to a black L-shaped ruler for scale. The ruler has markings in millimeters (0 to 100) and centimeters (0 to 10).
<p>Solder Board-Component View 5</p>	 A photograph of the same green PCB component, labeled 'View 5'. This view shows the component from a different angle, highlighting the solder joints and the placement of components on the board. It is placed on a blue textured surface next to a black L-shaped ruler for scale, identical to the ruler in View 4.

<p>Solder Board-Component View 6</p>	 <p>A photograph showing a small green PCB component with four solder joints. The component is placed on a blue textured surface next to a black L-shaped ruler for scale. The ruler has markings in millimeters, with the vertical scale ranging from 0 to 100 mm and the horizontal scale from 0 to 100 mm.</p>
<p>Antenna View</p>	 <p>A photograph showing a larger green PCB component, likely an antenna board, with various components and a connector. A red box highlights a specific area on the board, with a line pointing to a label "BT Ant". The board is placed on a blue textured surface next to a black L-shaped ruler for scale. The ruler has markings in millimeters, with the vertical scale ranging from 0 to 100 mm and the horizontal scale from 0 to 100 mm.</p>