

Use Instruction

Characteristics of this watch

Transparent display

Transparent display is one of the innovations of this watch, which is to make digital display information of intelligent module project on the transparent glass of watch. The watch glass is restored to transparent state after the screen is off, which let you can not only raise your hand to check the Internet pushing information, and operate the intelligence function through the screen operation, but also can be used as ordinary steel watches to check the time.

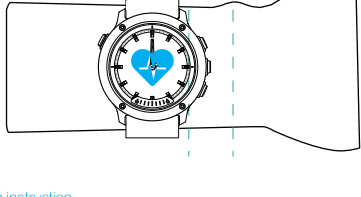
Digitized mechanical hand

Digitized mechanical hand is the innovation integration technology in the intelligent watch industry, the technology is not only change the traditional movement manually timing to electronic timing, but also adjusting time automatically by app. And more, hand and intelligent module adopt integrated power, then hand movement doesn't need to be equipped with button battery, so that you can avoid the trouble of changing battery.

How to wear the watch

Wear the watch

Please refer to the picture to wear the watch and keep it comfortable and fit. Wearing too tight or too loose will affect your heart rate measurement data.



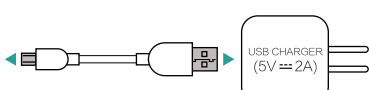
Wearing instruction

1. Please do not wear the watch too tight, otherwise it will hinder blood flow and affect the accuracy of heart rate monitoring.
2. Please do not destroy the heart rate sensor on the back of watch.
3. The watch adopts professional health material, and it has passed strict skin allergy test, you can wear it at ease. Stop wearing and consult your doctor if your skin feel uncomfortable when wearing.

Charging the watch

How to charge

The attached charging clamp (or USB magnetic charging cable), which should be used with standard charger (within 5V/2A) or standard USB power supply. Then take the charging pin of the clamp (or USB magnetic charging cable) close to the charge point on back of watch.



Charge instructions

1. Because of 360 non-port charging design, the watch can be charged whatever forward or reverse on the charging base.
2. It takes about 1 hour for the watch charged with full electricity, and it is full of electricity when the charging indicator shows 100%. Please disconnect the charger when it is fully charged. Please charge the watch when the watch power is lower.



3. Please charge your watch in a dry, well-ventilated environment.
4. In order to protect the battery life, the charging current will be reduced in a cold environment. The charging time may be longer, but it will not affect the battery life.
5. Watch battery charge less than 500 times, the performance is stable; after 500 times, charging performance and endurance time may have a certain attenuation, which is normal.
6. If you do not wear a watch for a long time, please charge it as soon as possible when the watch power out, otherwise it may lead to natural failure of the battery, affecting the normal work of the watch.

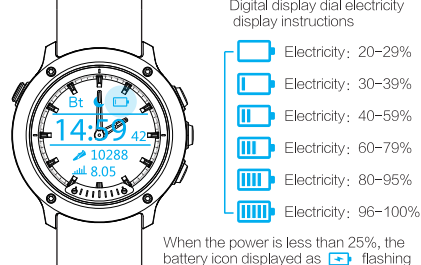
Electricity distribution

The intelligent module and hand movement of this watch adopt integrated power, and the intelligent module will shut down automatically when the electricity is less than 20%. (That is stopping intelligent related functions).

Battery standby

Intelligent module: 7-10 days, depending on the use frequency of the intelligent function, the standby time is slightly different (during this time the hand machine core works normally).

Hand movement: 37-40 days (including 7-10 working days of intelligent module), when the electricity is less than 20%, the intelligent module is closed, the hand movement can last about 30 days. The superpower-saving mode (that is closing the intelligent module) lasts about 150 days when the watch is fully charged.



Turn on/off the watch

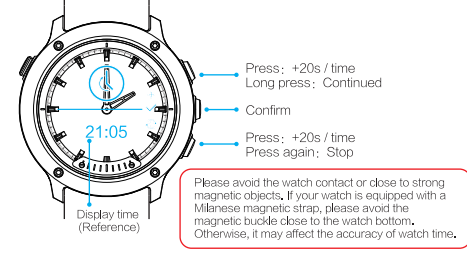
The watch hand movement works automatically when there is electricity, and there is no switch. Intelligent module can turn on and off the watch. If the watch has enough electricity (20% or more), the watch's intelligent module can be turned on or off by long press the left top button. (The following "watch switch" refers to intelligent module switchgear.)



Adjust time of watch hand

Adjusting time on watch

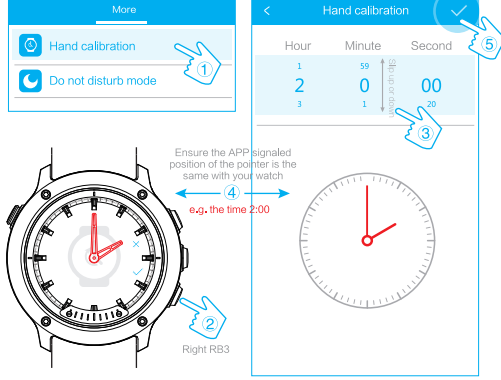
Whether the watch is off or on, you can adjust the watch hand. In power-off state, long press the right middle button of watch, when watch vibrates (shows it has entered the timing mode), at this time click the right top button, the hour hand and minute hand are chronological clockwise rotation. In the power-on state, operation path "Display dial -> Function menu -> Setting -> Proof pointer" and the same as above.



Please avoid the watch contact or close to strong magnetic objects. If your watch is equipped with a Milanese magnetic strap, please avoid the magnetic buckle close to the watch bottom. Otherwise, it may affect the accuracy of watch time.

Adjust time automatically by APP

You only need to tell APP your watch pointer time (wrong time), the APP can control the watch adjust time automatically. APP's operating path is "Home page -> More -> Hand calibration". As follows:

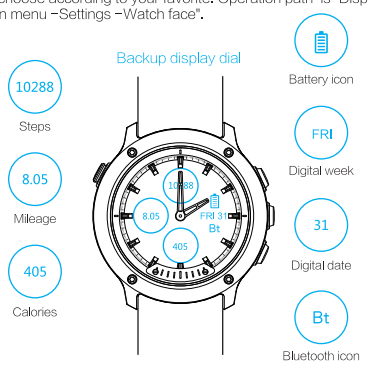


Display dial

In the turn-on state, the digital display dial can be awakened by pressing any button (we call the digital display dial compared to the watch's display dial). The default digital display of the watch is illustrated below. (Note: after matching the watch with the mobile APP, the digital time will automatically check the time of phone, see the following section.)



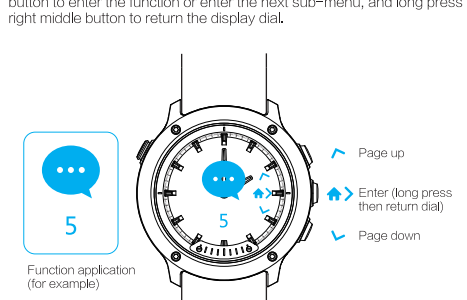
Due to the information displayed by display dial is limited, we designed 3 display dials for you, 1 default display dial and 2 backup display dials, they have a part of the same content and also have different display content, you can choose according to your favorite. Operation path is "Display dial -> Function menu -> Settings -> Watch face".



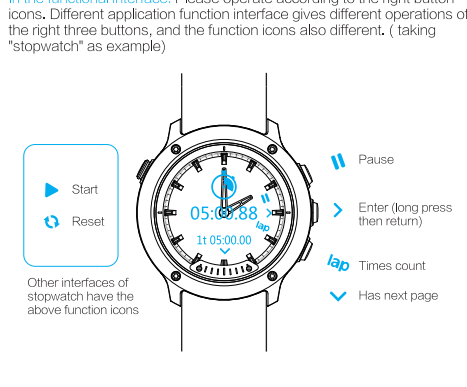
Function icon of buttons

After awakening the display dial, you can perform related functions of watch through the watch buttons. Press the right three buttons of watch to enter the watch function menu.

Under the menu state: Press the right top button to upturn the menu, press the right down button to downturn the menu, press the right middle button to enter the function or enter the next sub-menu, and long press right middle button to return the display dial.



In the functional interface: Please operate according to the right button icons. Different application function interface gives different operations of the right three buttons, and the function icons also different. (Taking "stopwatch" as example)



Button function icons: The watch display interface will also appear other functional icons, the following are display button icons function definition.

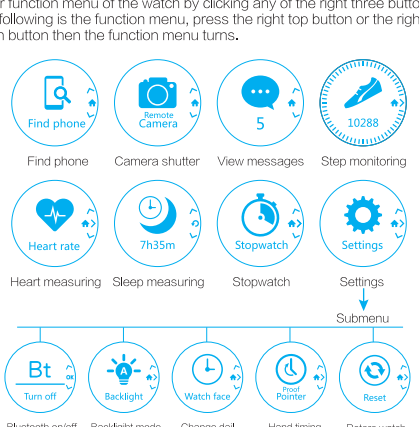
System function icon	Stopwatch function icon
Up	Start
Enter	Pause
Down	Times count
Return	Reset
Home (L-press)	Stop
Confirm selection	
Confirm	Messages function icon
Cancel	Unread Message
	Select
	Next
	Next page
	Delete

Other function icon
Alarm release (L-press)
Shutter
Proofreading (steps)
Proofreading (continuity)

Function menu

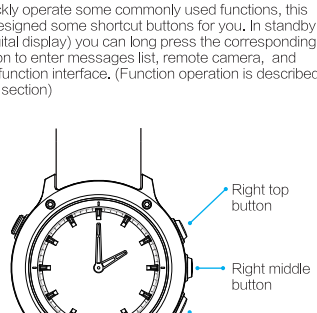
Application function (Basic menu)

The function menu of the watch by clicking any of the right three buttons. The following is the function menu, press the right top button or the right down button then the function menu turns.



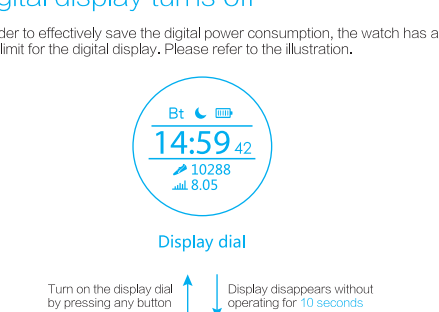
Function shortcut button

In order to let you quickly operate some commonly used functions, this watch has specially designed some shortcut buttons for you. In standby mode (without any digital display) you can long press the corresponding function shortcut button to enter message list, remote camera, and heart rate measuring function interface. (Function operation is described in special introduction section)



Digital display turns off

In order to effectively save the digital power consumption, the watch has a time limit for the digital display. Please refer to the illustration.



Install APP

The watch has the steps monitoring, heart rate measuring and other functions, and the data can be checked on the watch directly. If you install its mobile APP, you can use more intelligent functions, such as call reminder and information reminder) and upgrade your watch's firmware through the APP.

You can download and install the APP in the following two ways:
Way 1: Search the android or apple APP market for "FunDio".
Method 2: Scan the right QR code by mobile phone.

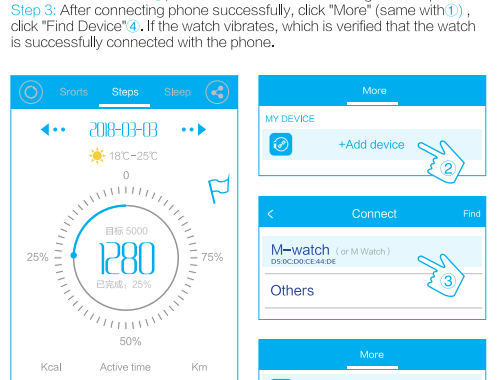


Connects with mobile phone

Step 1: Turn on the watch Bluetooth and bring it close to mobile phone. (The watch Bluetooth has been turned on when it is delivered out of the factory. If you have turned off Bluetooth, please turn on the Bluetooth at the same time.)

Step 2: Open the APP on mobile phone, click "More" in the right down corner of the APP's homepage, then click "Add device", search for "M-watch" and click it, then the watch start connecting with the phone.

Step 3: After connecting phone successfully, click "More" (same with 1), click "Find Device". If the watch vibrates, which is verified that the watch is successfully connected with the phone.



Specifications

Material and technology

	Parts	Material & Technique
Watch case	Front cover	Brushed stainless steel
	Watch case	PC fiber reinforced composite plastic
	Glass	Tempered Glass + Edge silver plating
	Back cover	Charging copper nail + Injection Isolation
	Button	4 Buttons, Brushed stainless steel
Dial	Base board	Polyester fibre sheet
	Watch pointer	Stainless steel
Dimension	Scale	Compound plastic + Stainless steel
	Decorative pattern	Compound plastic + Stainless steel
	Watch diameter	42.0 mm
Dimension	Watch thickness	14.0 mm
	Dial diameter	38.0 mm
	Fit strap	24.0 mm

This watch can be matched with 3 straps, watch weight is 57.0g, the watch weight is 62.0g with sport two-colored silica strap, the watch weight is 60.0g with Nylon & Genuine leather strap.

Hardware Configuration

Hardware Specification	Parameter Description	
Hardware system	Hardware Platform	NRF51822
	Memory	256K (FLASH) + 16K (RAM)
	Language	English, Chinese (Simplified, Traditional)
	Bluetooth	Bluetooth 4.0
	Antenna	FPC antenna
	Movement Sensor	3D G-sensor
	Heart rate Sensor	Static & Dynamic sensor 2 in 1
Display system	Movement	Stepper motor movement
	Vibration Motor	Ultra low power gentle vibration motor
	Mechanical Porters	Physical hour hand, minute hand
	Transparent display	Round transparent LCD 128*128 DPI
Standby system	Display timing	Adjust by hand, (APP auto timing)
	Pointer timing	Adjust by buttons
	Luminous type	Dial LED + luminous dial
Waterproof Ability	Battery	60mAh Li-ion polymer battery
	Charging	Waterproof contact pin charging
	Smart module	Smart module 8-10days + Pointer 38-45days
Pointers only	160 days (See related chapters)	
SATM	(See related chapters)	

The preventive performance is closely related to the operation (and precautions). Please refer to the relevant chapters in detail.

FCC Warning Statement

Changes or modifications not expressly approved by the party responsible for compliance could void the user's authority to operate the equipment. This equipment has been tested and found to comply with the limits for a Class B digital device, pursuant to Part 15 of the FCC Rules. These limits are designed to provide reasonable protection against harmful interference in a residential installation. This equipment generates uses and can radiate radio frequency energy and, if not installed and used in accordance with the instructions, may cause harmful interference to radio communications. However, there is no guarantee that interference will not occur in a particular installation. If this equipment does cause harmful interference to radio or television reception, which can be determined by turning the equipment off and on, the user is encouraged to try to correct the interference by one or more of the following measures:

- Reorient or relocate the receiving antenna.
- Increase the separation between the equipment and receiver.
- Connect the equipment into an outlet on a circuit different from that to which the receiver is connected.
- Consult the dealer or an experienced radio/TV technician for help.