

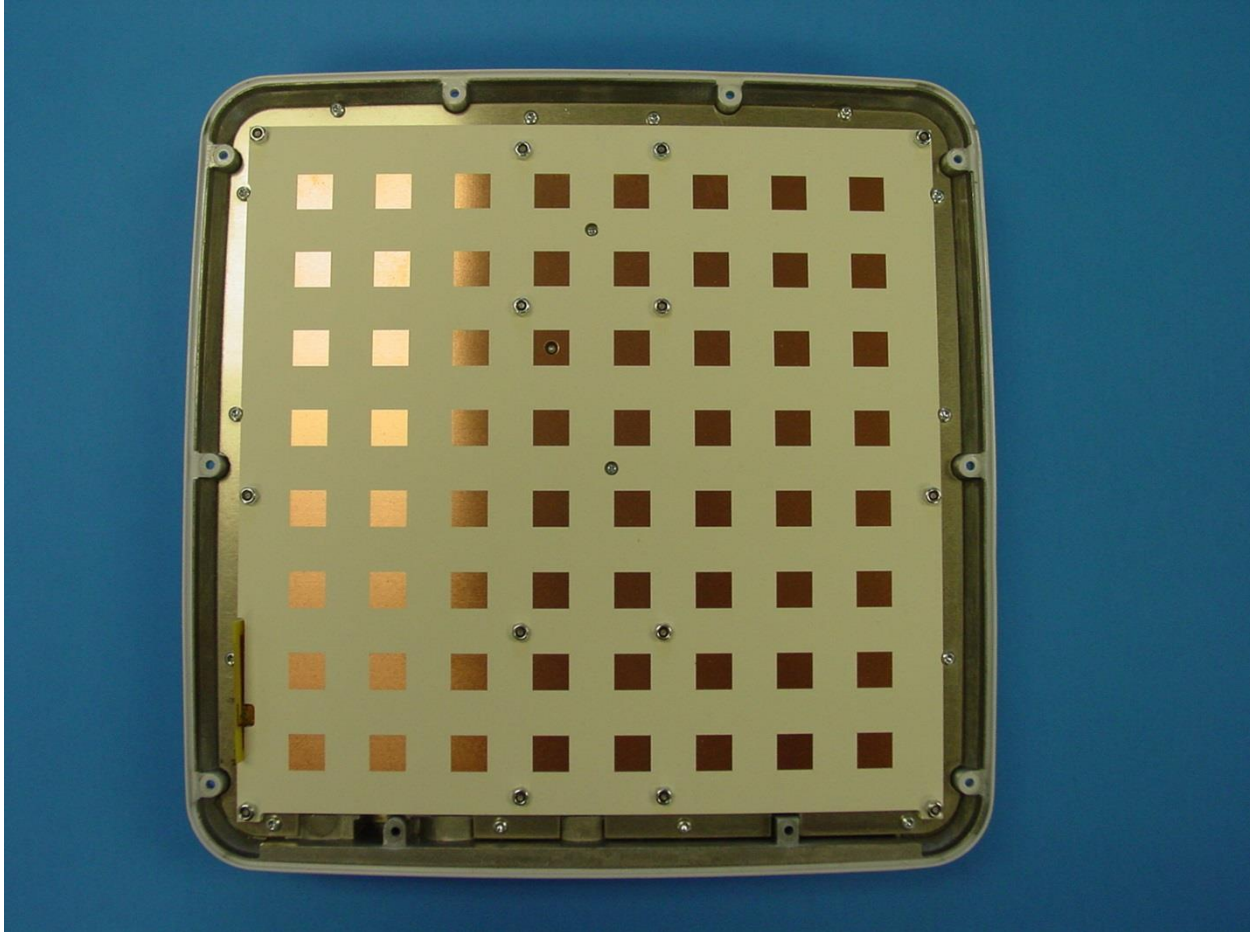
Internal Photographs



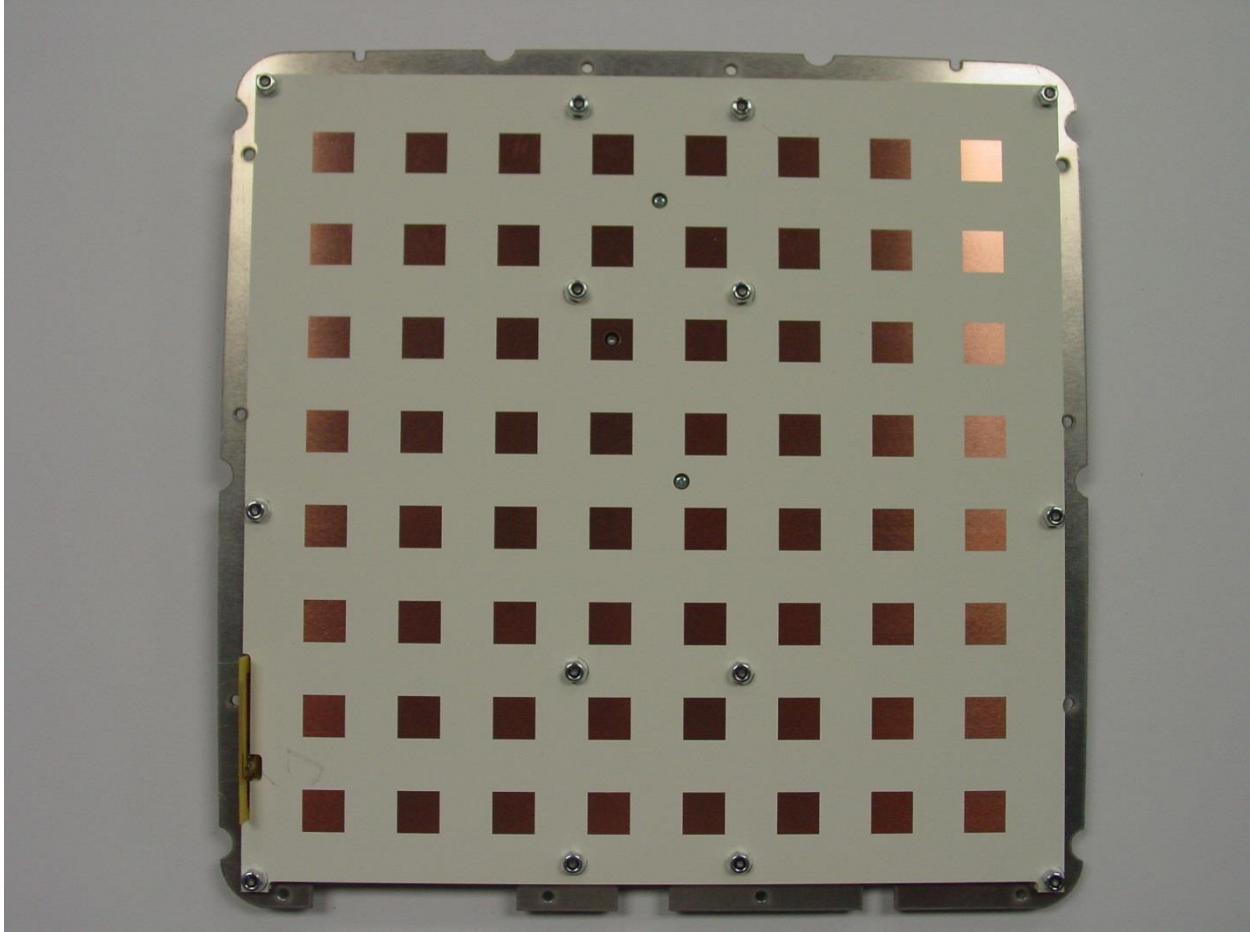
Front of unit - Radome



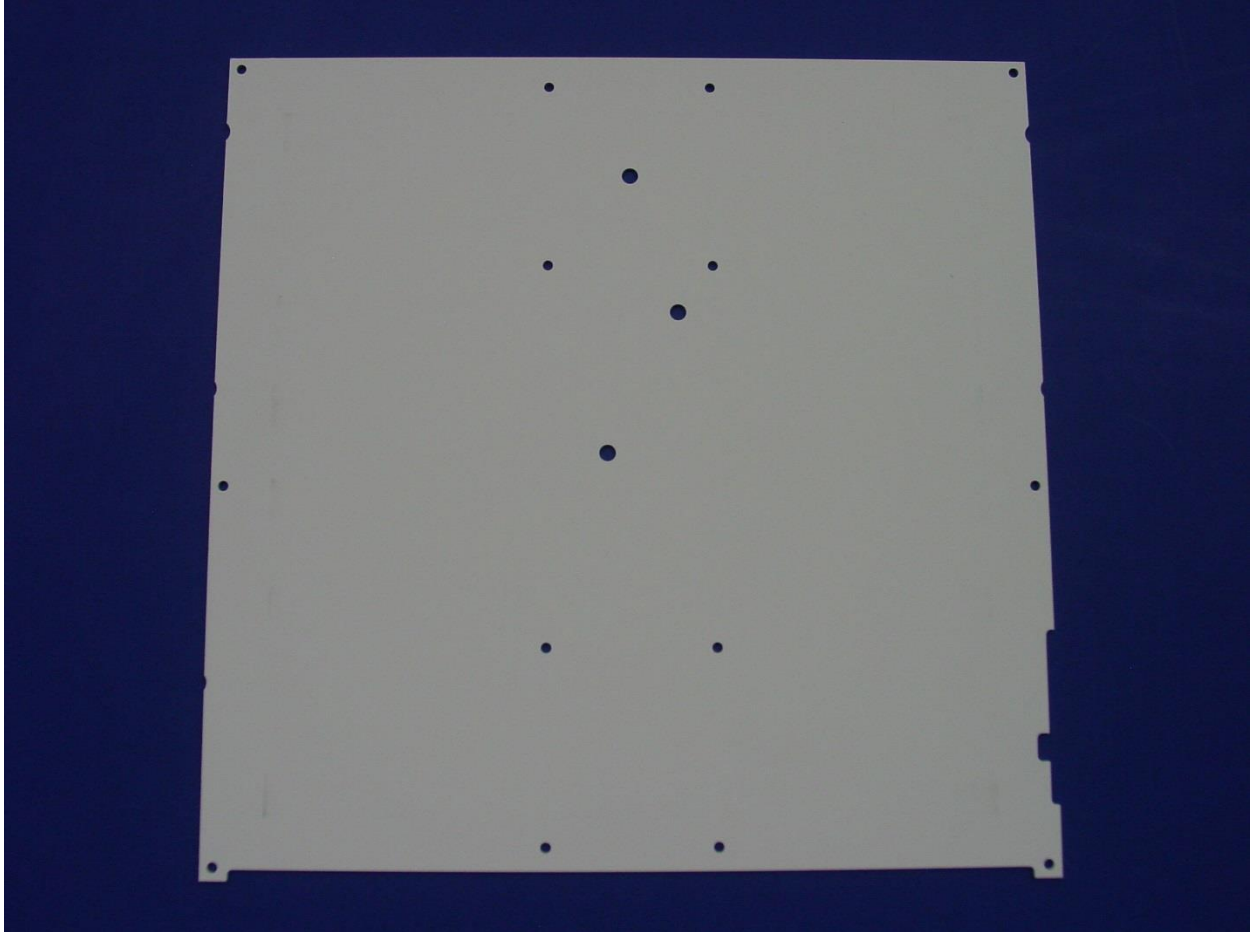
Back of Radome



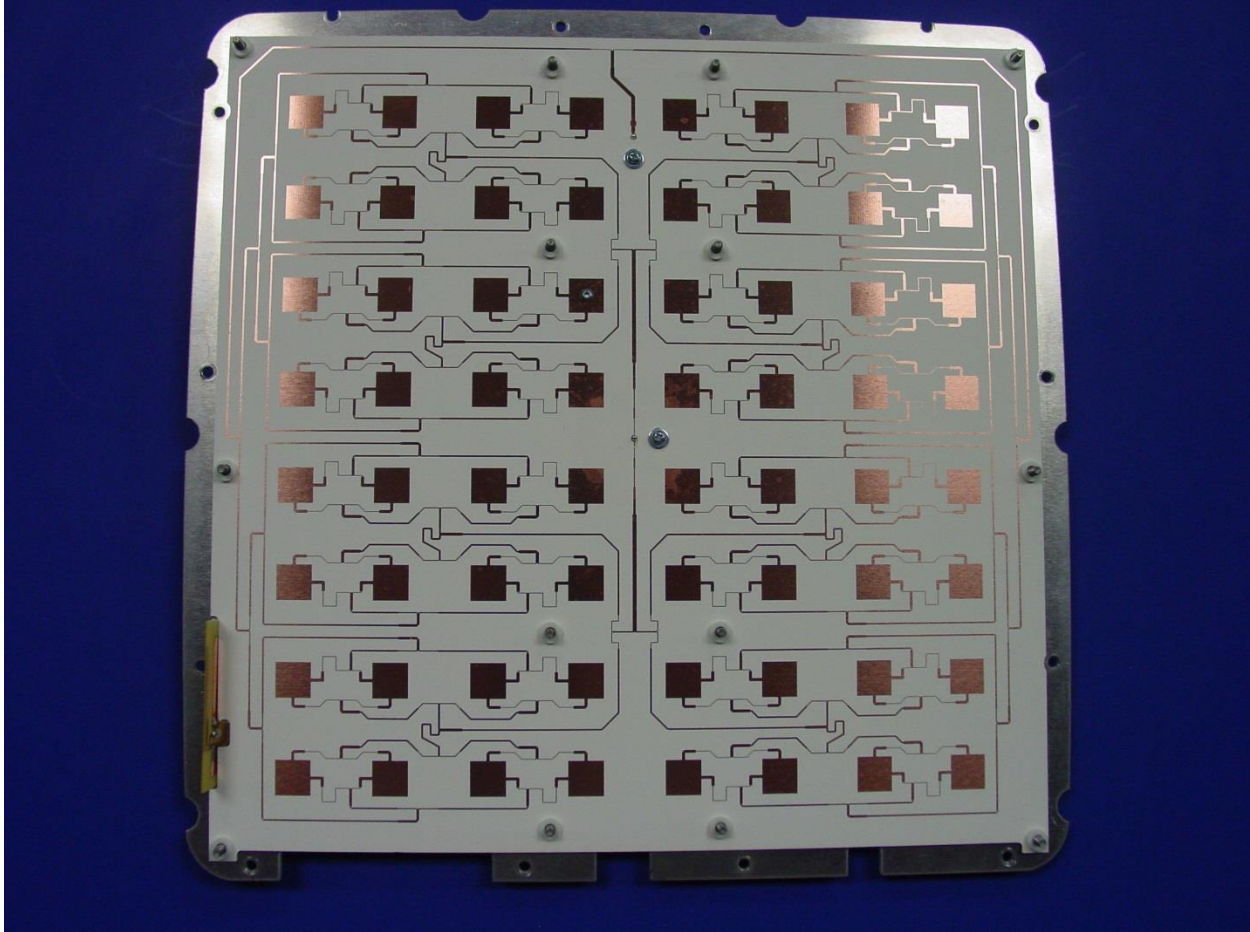
Chassis with radome removed



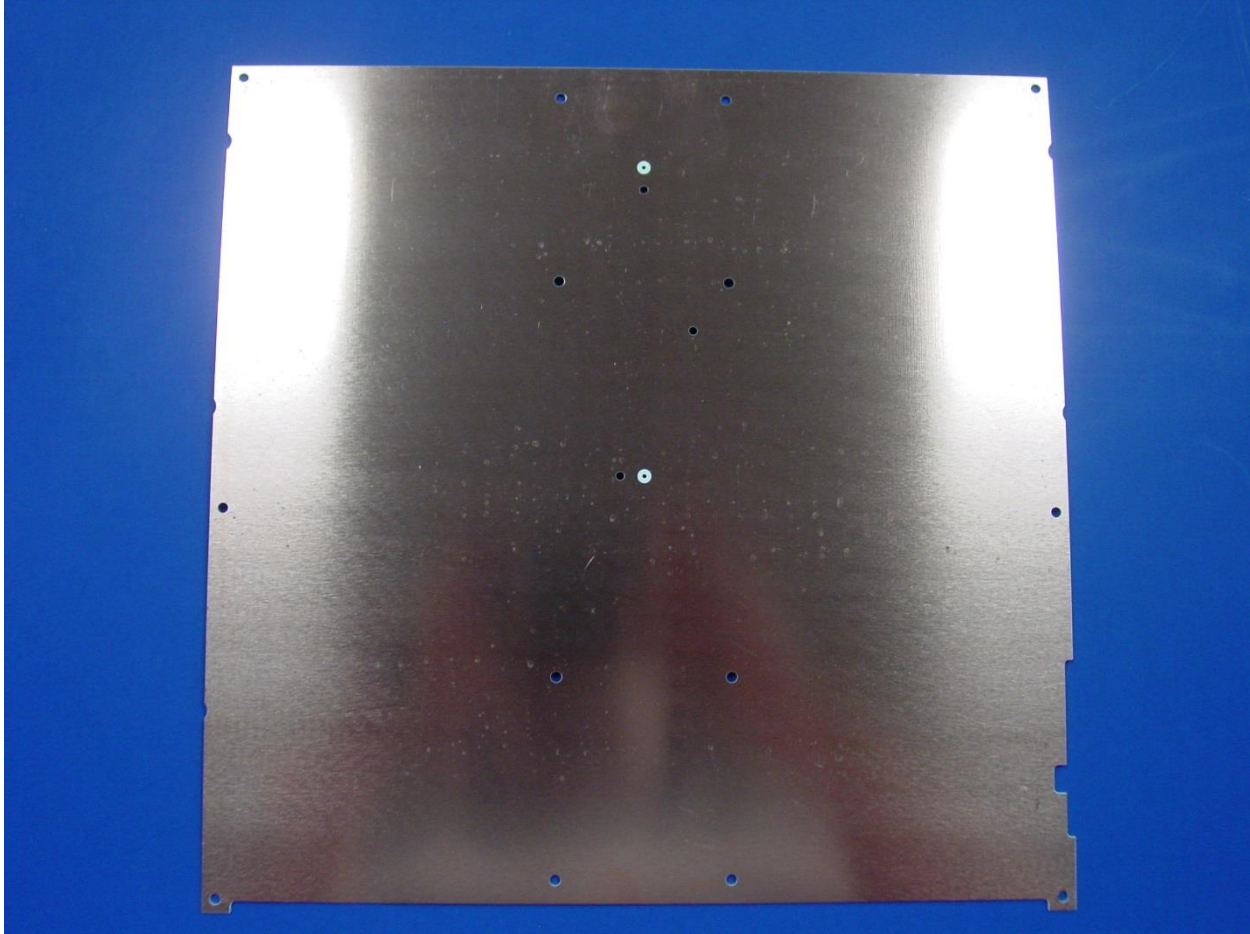
Antenna assembly - reflectors



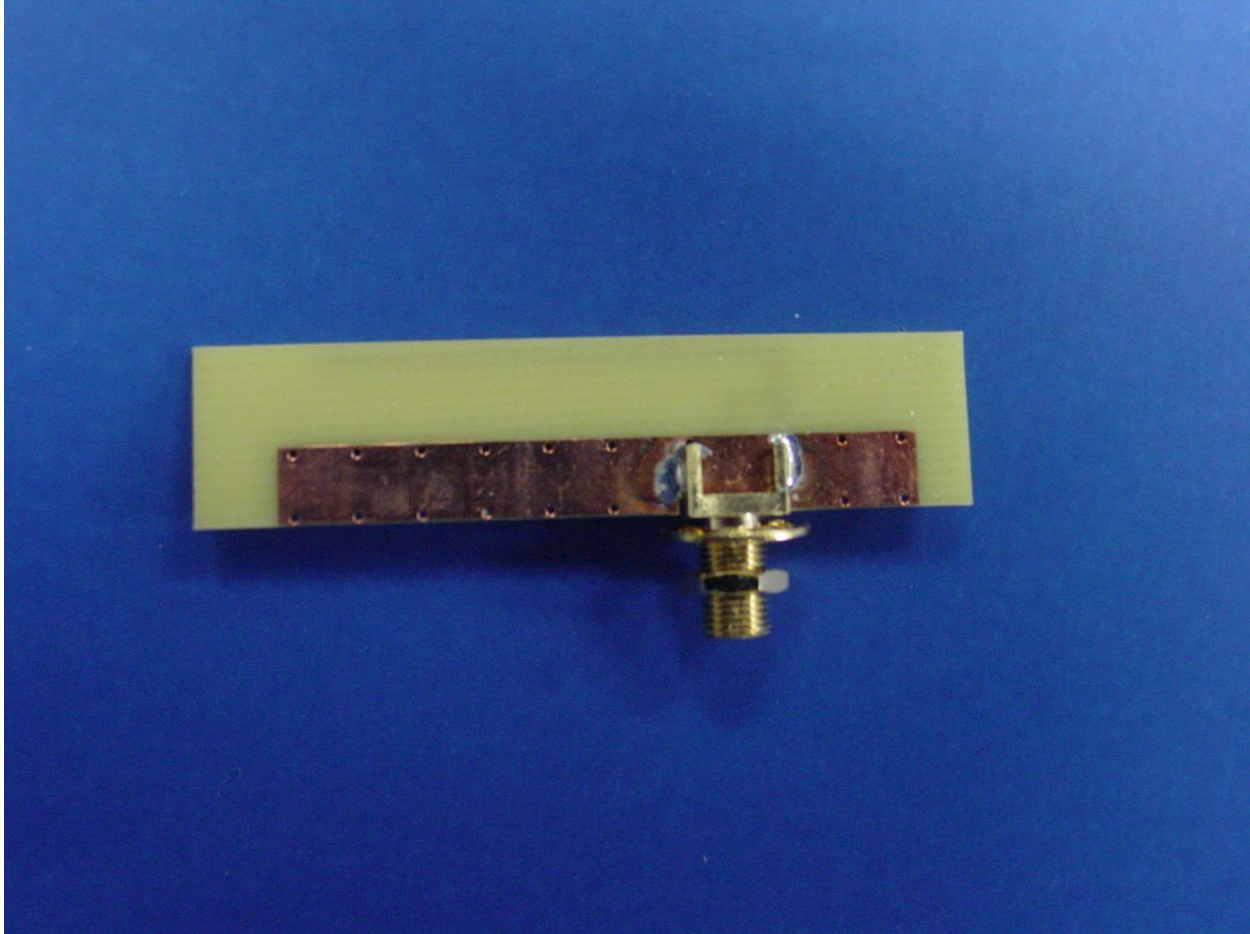
Antenna – back side of reflector board



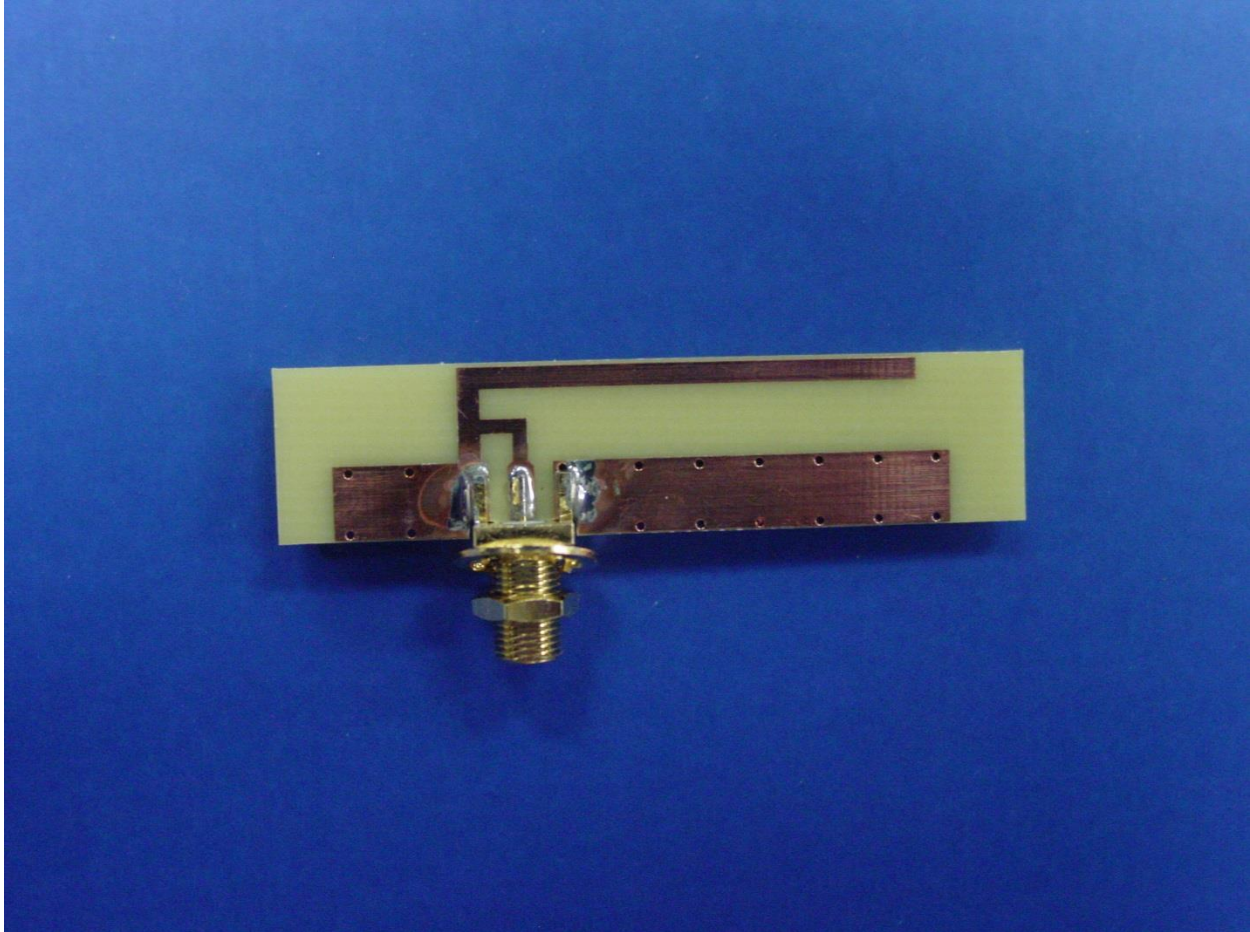
Antenna distribution network



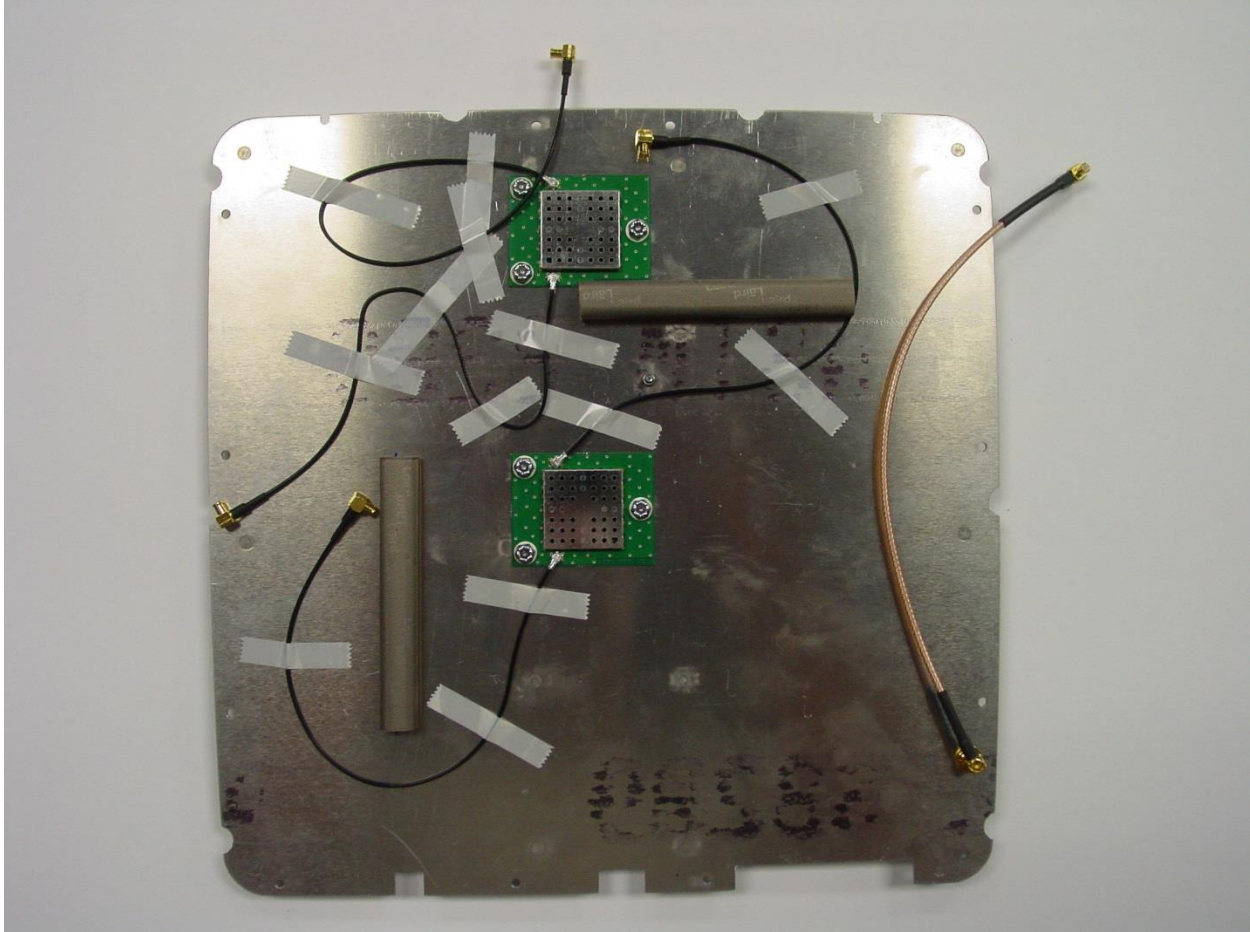
Antenna back side of distribution network



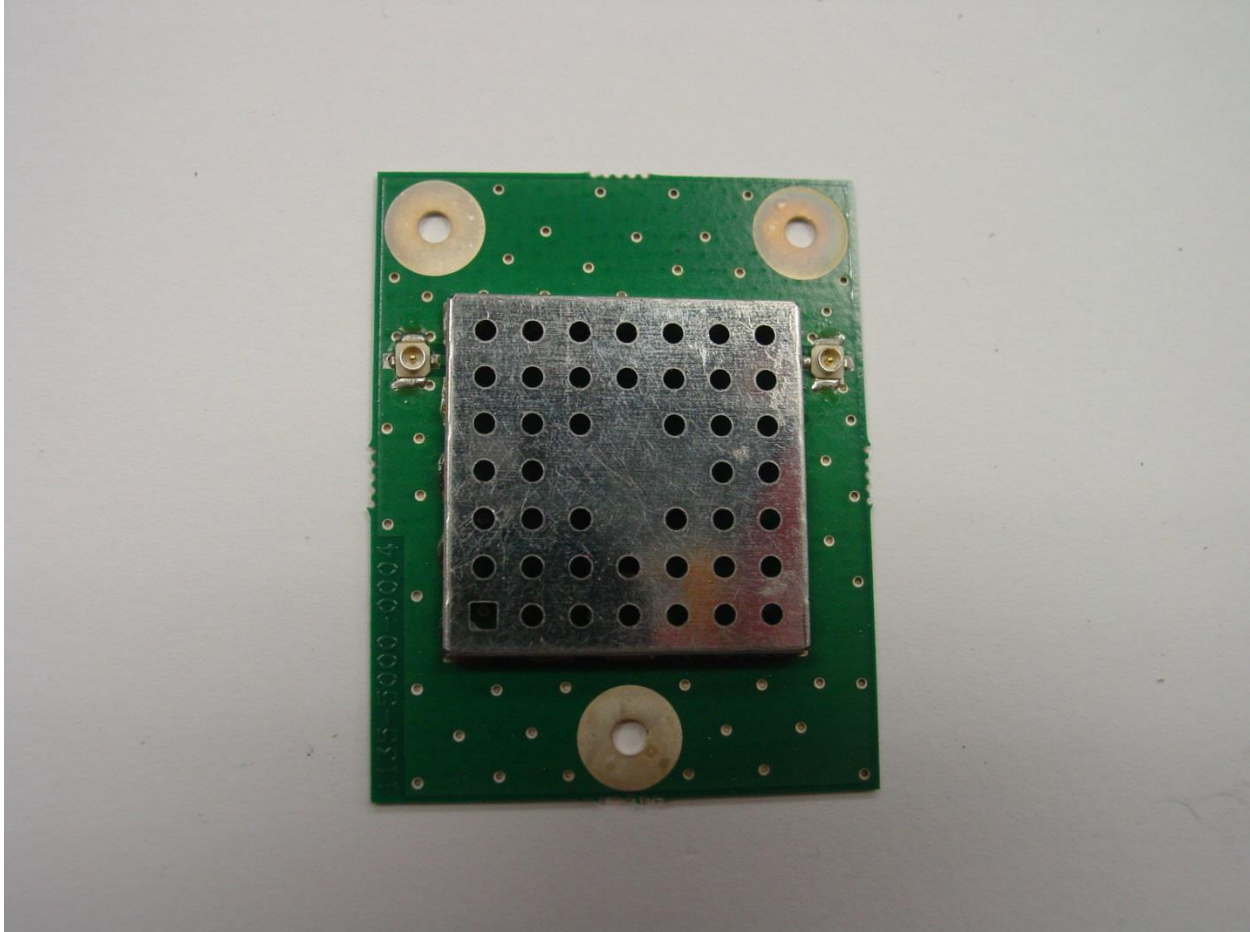
GPS/GLONASS antenna ground side



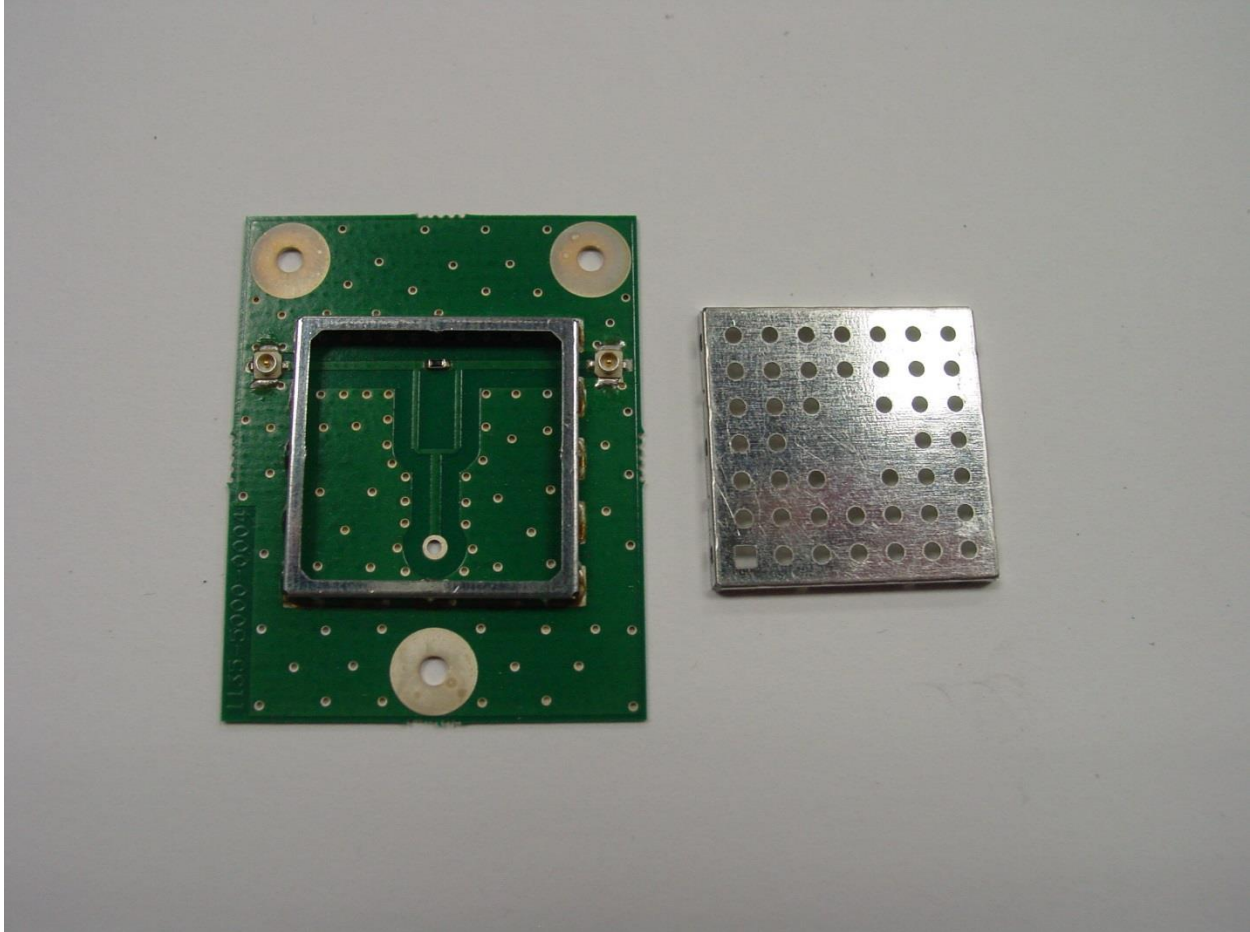
GPS/GLONASS antenna element side



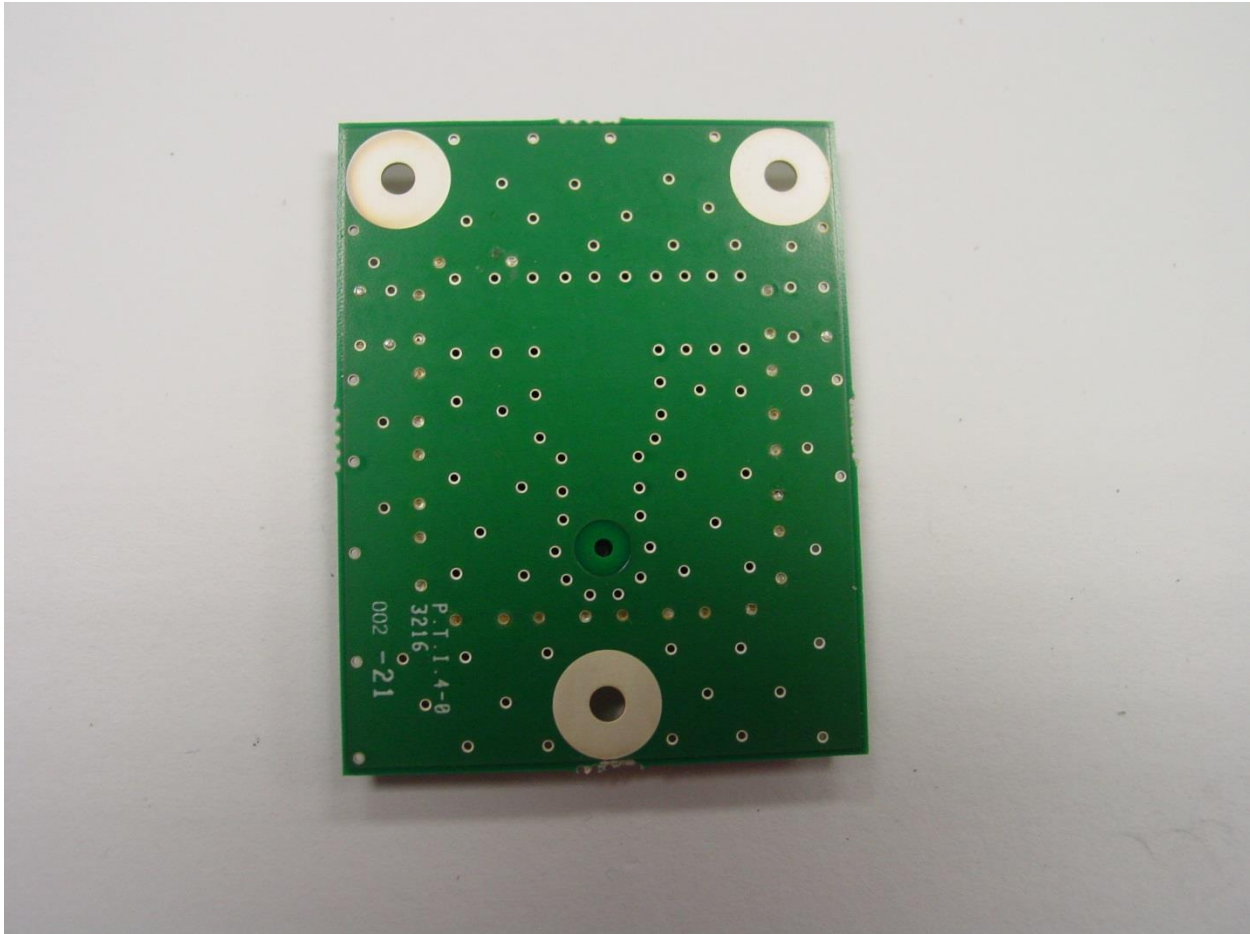
Antenna back side of assembly with splitter boards



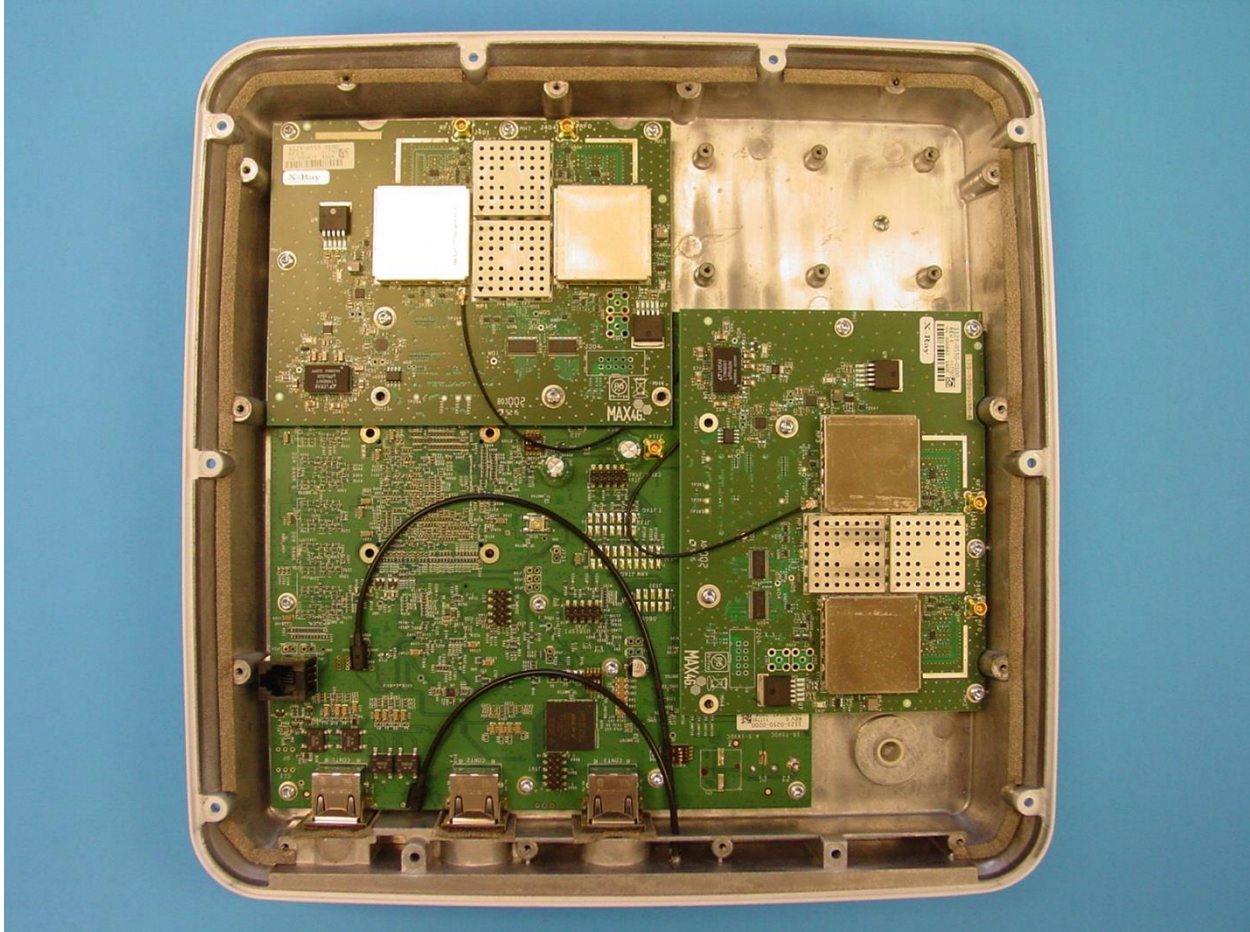
Antenna splitter board



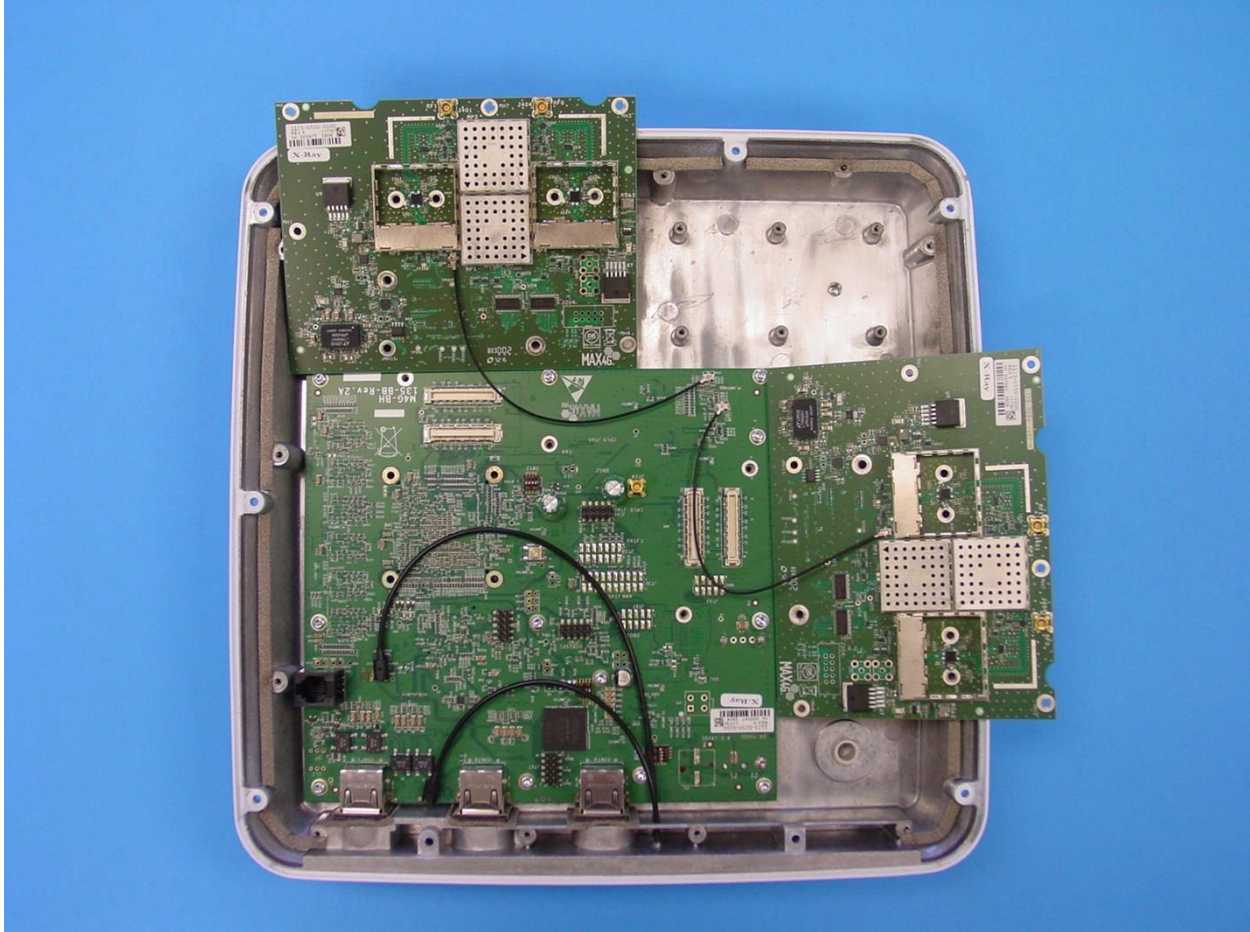
Antenna splitter board cover removed



Antenna splitter board back side



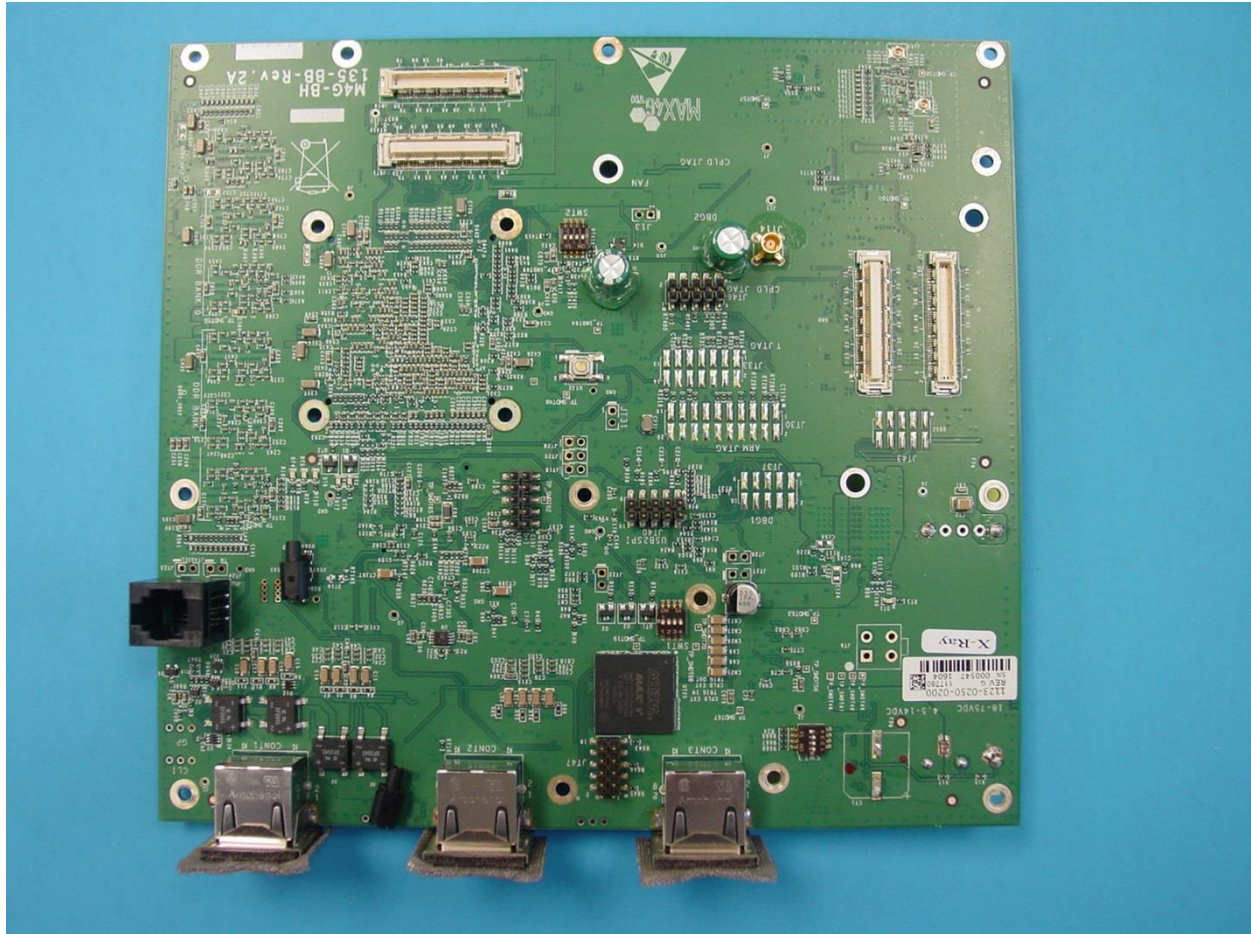
Chassis internal with two RF boards and logic board



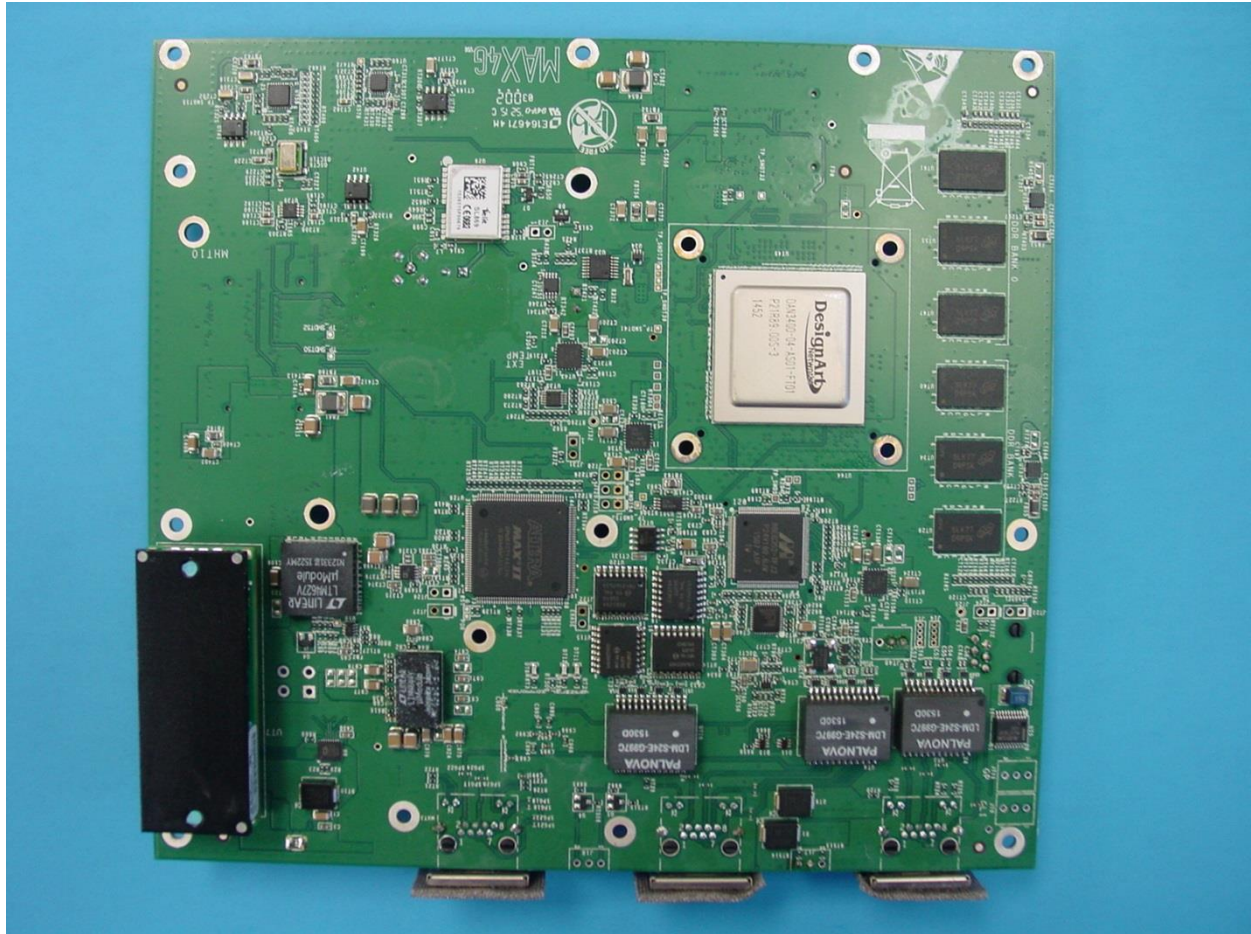
Chassis internal RF boards detached



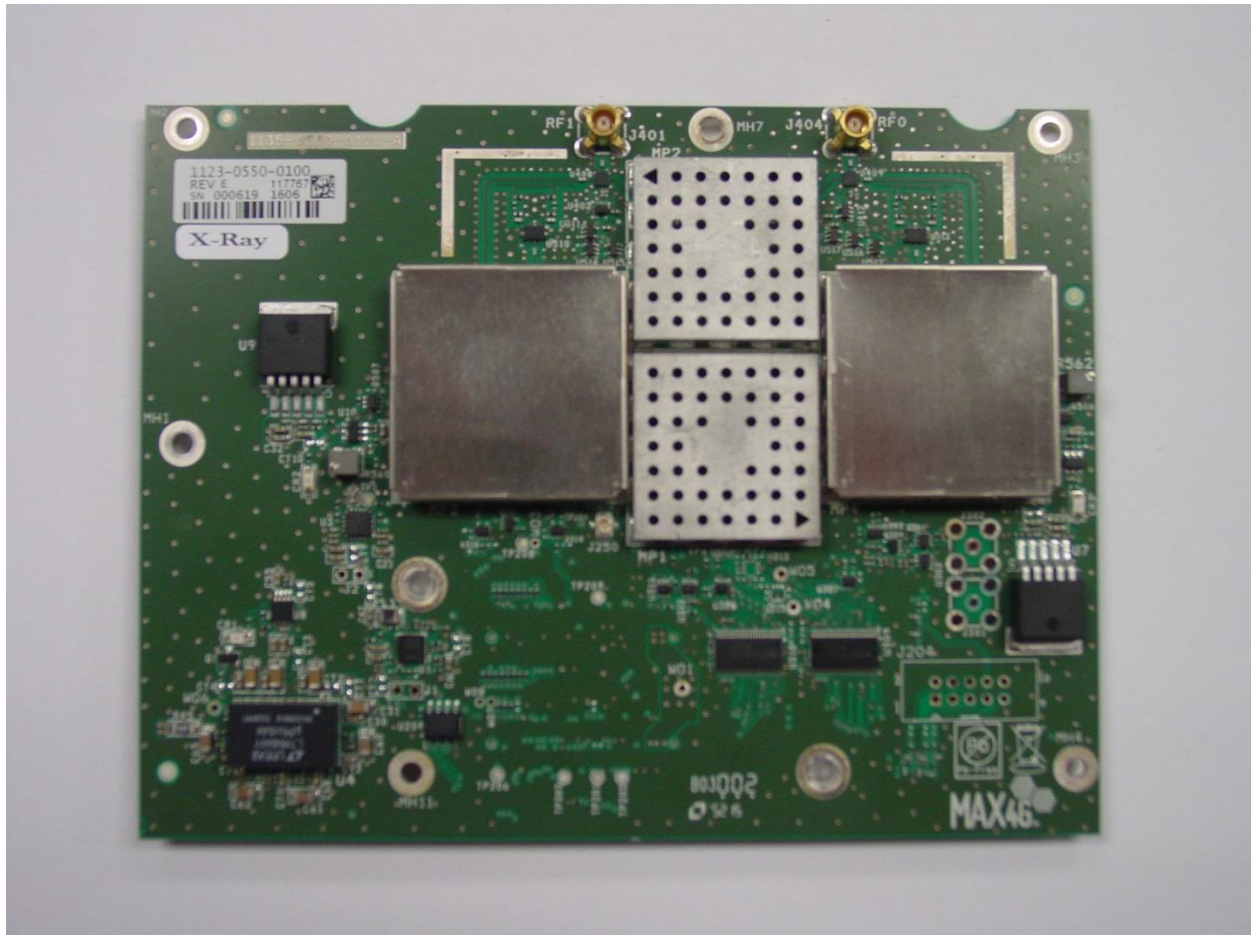
Chassis with circuit boards removed



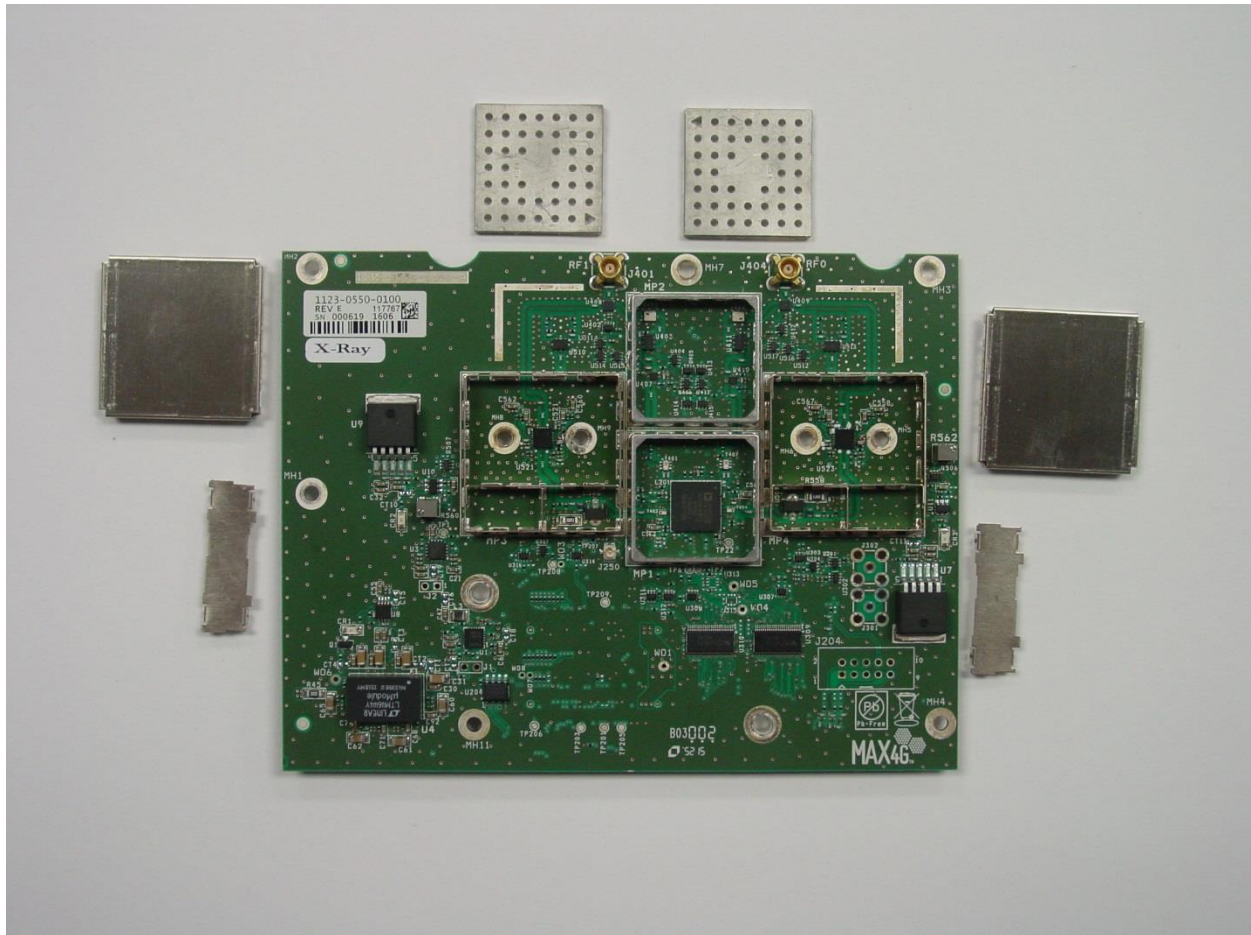
Logic circuit board – bottom side



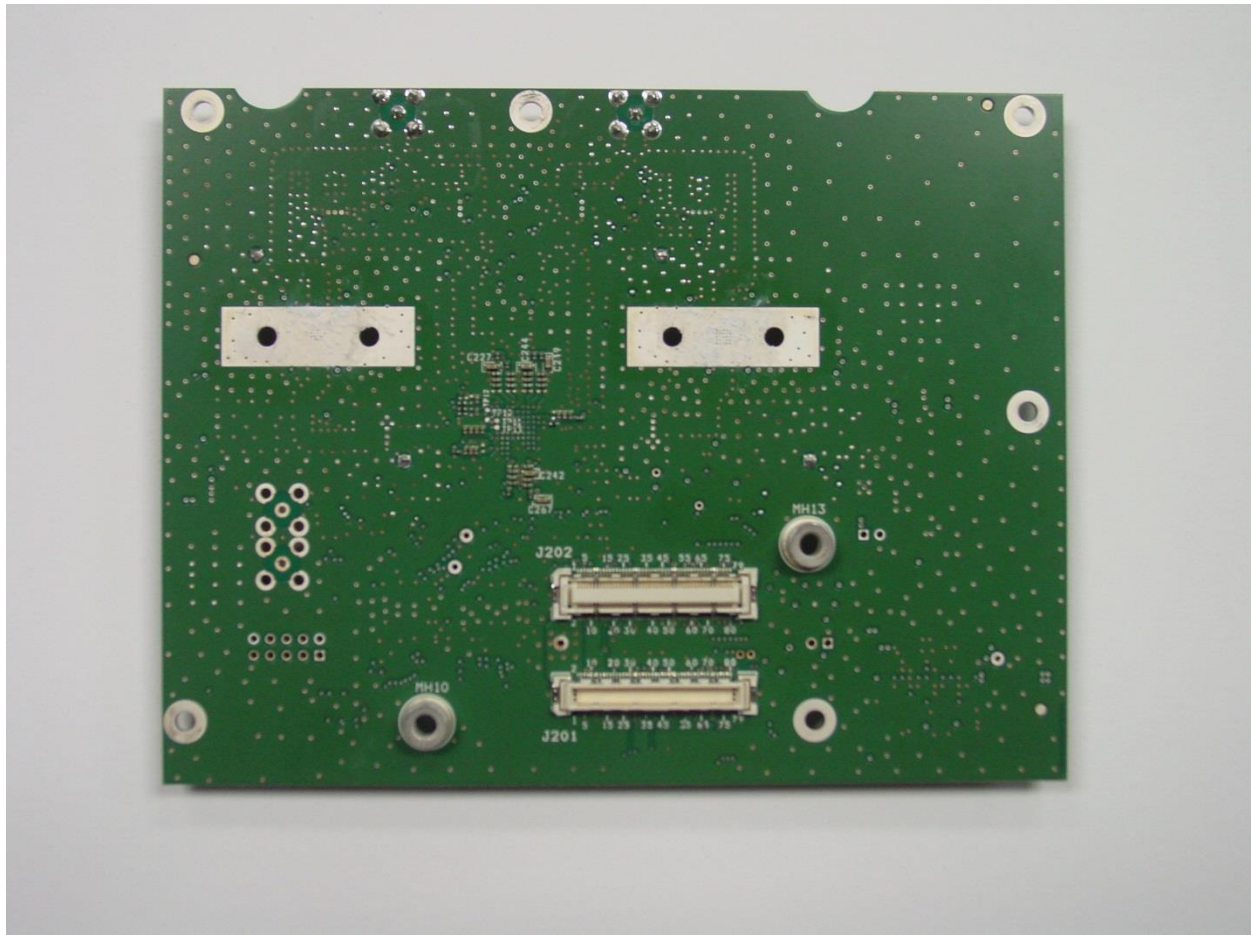
Logic circuit board – top side



RF circuit board top side



RF circuit board top side with shield covers removed



RF circuit board bottom side