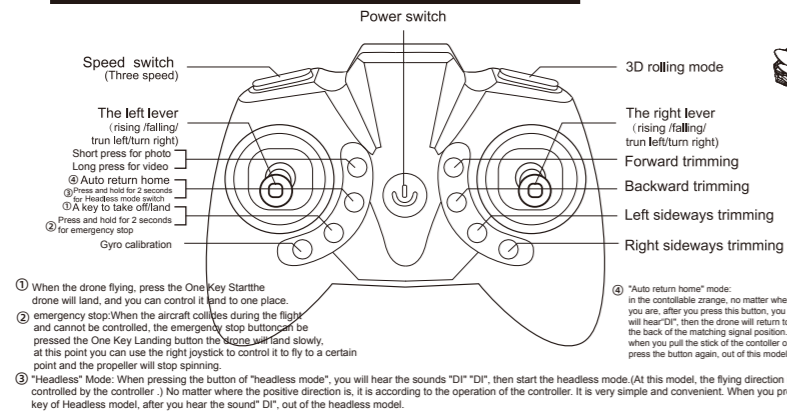


4-AXIS AEROCRAFT INSTRUCTION MANUAL

Age:14+

- Attention:**
1. This 4-axis aerocraft is suitable for indoor/outdoor flying, but make sure the outdoor wind force is not more than grade 4.
 2. It adopts 2.4G frequency band; with long controlled distance; allow some helicopters to fly in the same area without any interference. Besides, players can control it to move forward/backward, turn left/right, left/right sideways fly.
 3. Please read this manual carefully before using and keep it properly for future reference.

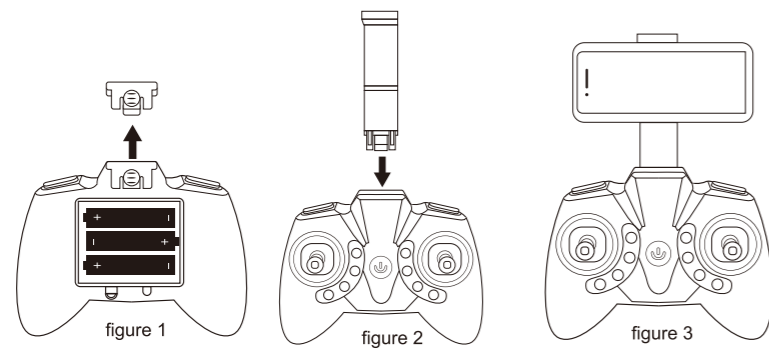
The illustration of the remote control function



- ① When the drone flying, press the One Key Start the drone will land, and you can control it and to one place.
- ② emergency stop When the aircraft crashes during the flight and cannot be controlled, the emergency stop button can be pressed the One Key Landing button the propellers will stop slowly, at this point you can use the right joystick to control it to fly to a certain point and the propeller will stop spinning.
- ③ "Headless" Mode: When pressing the button of "headless mode", you will hear the sounds "D1" "D1", then start the headless mode. (At this model, the flying direction is still controlled by the controller.) No matter where the positive direction is, it is according to the operation of the controller. It is very simple and convenient. When you press the key of Headless model, after you hear the sound "D1", out of the headless model.
- ④ "Auto return home" mode: In the controllable range, no matter where you are, after you press this button, you will hear "D1", then the drone will return to the back of the matching signal position, when you pull the stick of the controller or press the button again, out of this model.

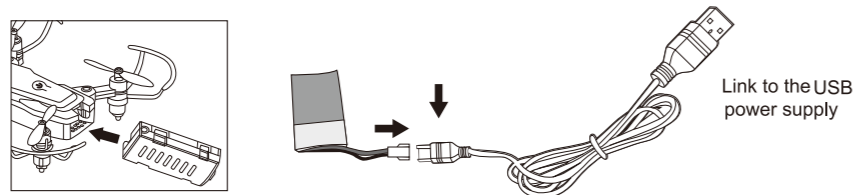
Installation of mobile phone clips (WIFI only)

Remove the small accessories on the back of the remote control (figure 1)
Put the mobile phone clip on the back of the remote.(figure 2)
put the mobile phone into the clip of the remote control (figure 3)



Aircraft battery change

Will craft of lithium battery from the battery holder by graphic method and disconnect the power plug, insert the plug of the charger USB computer USB jack, after connect the charger plug and lithium battery plug. When charging, LED lights, at the end of the USB charging LED lights inside, charging time is about 45 minutes.



Battery Installation

1. Loosen screw and remove the battery compartment door.
2. Install 3 1.5VAAA batteries (not included) in the battery compartment as shown, make sure to follow the correct positive "+" and negative "-" polarities with the corresponding marking inside the battery compartment.
3. Re-install the battery compartment door and tighten the hold down screw.

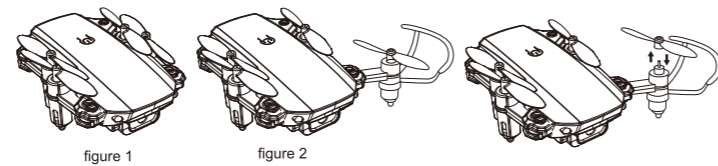
Accessories package

- This product contains fittings bag:
1. blade guard
 2. fan blade A2, B2
 3. the USB connection
 4. with 1pc manual screwdriver

HOW TO CONTROL

Ascending ↑ Descending ↓	Push up the throttle stick, and the spinning speed of the main blades will increase. The aerocraft begins to ascend. Pull down the throttle stick, and the spinning speed of the main blades will decrease. The aerocraft begins to descend.	
Turn right Turn left	Push the rudder stick to the left, and the aerocraft will turn to left. Push the rudder stick to the right, and the aerocraft will turn to right	
Forward ↑ Backward ↓	When the rudder stick is pushed upward, the aerocraft swashplate will down tilt and it advances. When the rudder stick is pushed downward, the aerocraft will up tilt and it recedes.	
Left sideward fly Right sideward fly	When push the right lever (steering rudder) to the right, the aerocraft will fly to the right When push the right lever (steering rudder) to the left, the aerocraft will fly to the left.	

Unfold the aircraft

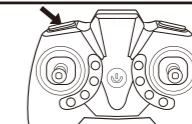


When you receive the aircraft, the state of being acquiescent is the folding state, at this time unfold the aircraft arms respectively rotate to outside about 120 degrees (as shown in Figure 2), when you hear a sound of click, the rotation has been in place. Pull the propeller up for removal and press it down for installation. figure 3

BAROMETER SET HEIGHT



Start a key fixed high, the vehicle automatically rise to a certain distance. The height, can be carried out under the maintain status of roll, etc. Line function. (Without altitude hold function, this button is not available)



NOTICE

Push the throttle level slowly; please press the trimming buttons when the aerocraft hovers or leans to different directions in the air.

Attention:

When the aerocraft ascends Within 30 cm height, it will suffer the "ground effect" and its performance will become unstable.

	When the aerocraft spins towards to left, please continuously press the trimming button (right-turn trimming) till it stops spinning.	
	When the aerocraft spins towards to right, please continuously press the trimming button (left-turn trimming) till it stops spinning.	
	When the aerocraft flies sideways (towards the left) in the process of hovering, please continuously press the trimming button (right sideways fly) till it recovers.	
	When the aerocraft flies sideways (towards the right) in the process of hovering, please continuously press the trimming button (left sideways fly) till it recovers.	
	When the aerocraft flies backward in the process of hovering, please continuously press the trimming button (forward) till it recovers.	
	When the aerocraft flies forward in the process of hovering, please continuously press the trimming button (backward) till it recovers.	
If the aircraft take-off can not be vertical rise of correction, place the aircraft into the horizontal platform and press the accelerator joy stick to the bottom left corner and press the direction joy stick to the bottom right corner at this time, the indicator light of the aircraft changes from flashing to light, that mean the calibration is completed, quickly, loosen all the remote control button until the indicator light.		

3D FLIP FLYING

Players can control it to perform some breathtaking operations when mastering the basics. First, fly it to the height of 3m. Second, click the flip key and push the right rudder to the end (in one direction), and push it: the aerocraft turns over.

	Flip forward		Flip backward
	Flip towards the left		Flip forwards the right

PROBLEMS AND SOLUTIONS

PROBLEMS	CAUSES	SOLUTIONS
Transmitter not working	1. The transmitter switch is on "OFF"	1. Turn on the transmitter
	2. Install the batteries improperly	2. Check with the pole indications and reinstall the batteries again
	3. Batteries are completely consumed	3. Replace with new batteries
Control failure	1. The transmitter switch is on "OFF"	1. Turn on the transmitter
	2. The aerocraft battery no connection	2. The aerocraft battery in the correct orientation connection
	3. Too strong wind force	3. Do not fly under the environment of windy as too strong wind may cause flying limitation to the aerocraft or it may hamper your controlling or flying.
Ascending failure	1. The rotation of main blades is too slow	1. Push up the throttle stick
	2. The fuselage battery is well consumed	2. Recharge the fuselage battery
Landing too soon	The throttle stick is pulled down too fast	Pull down the throttle stick slowly to perform a smooth landing
Out of control	Beyond the effective controlling distance	Make sure there is no transmitter with the same frequency is used within in the radius of 30 meters.

PRECAUTIONS:

1. The remote controlled distance will be shorten when the power (aerocraft or transmitter) is insufficient.
2. It is difficult to take off or fly not high when aerocraft's power is insufficient.
3. When the aerocraft is damaged, please repair it in time and stop operating, or it may lead to injury.
4. If you do not use the transmitter for a long time, please remove the batteries to avoid the batteries' leakage.
5. Do not drop the transmitter from the high altitude or crash it badly, otherwise, it will shorten the transmitter's using life.

This device complies with Part 15 of the FCC Rules. Operation is subject to the following two conditions: (1) this device may not cause harmful interference, and (2) this device must accept any interference received, including interference that may cause undesired operation.

changes or modifications not expressly approved by the party responsible for compliance could void the user's authority to operate the equipment.

This equipment has been tested and found to comply with the limits for a Class B digital device, pursuant to Part 15 of the FCC Rules. These limits are designed to provide reasonable protection against harmful interference in a residential installation. This equipment generates, uses and can radiate radio frequency energy and, if not installed and used in accordance with the instructions, may cause harmful interference to radio communications. However, there is no guarantee that interference will not occur in a particular installation. If this equipment does cause harmful interference to radio or television reception, which can be determined by turning the equipment off and on, the user is encouraged to try to correct the interference by one or more of the following measures:

- Reorient or relocate the receiving antenna.
- Increase the separation between the equipment and receiver.
- Connect the equipment into an outlet on a circuit different from that to which the receiver is connected.
- Consult the dealer or an experienced radio/TV technician for help.

This equipment complies with FCC radiation exposure limits set forth for an uncontrolled environment. For the drone, it should be installed and operated with minimum distance 20cm between the radiator and your body. This transmitter must not be co-located or operating in conjunction with any other antenna or transmitter.