

Owner's Manual

Safety Instructions

- 1 Avoid dropping.
- 2 Do not disassemble.
- 3 Keep out of reach of children. It contains small parts, which may be a choking hazard.
- 4 Do not submerge in water.
- 5 Avoid extreme temperatures.
- 6 Do not use the device outdoors during a thunderstorm.
- 7 Use original or certified cables.
- 8 Do not use any corrosive cleaner/oil to clean.

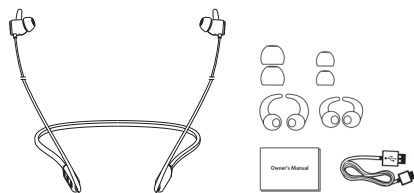
Hearing Safety



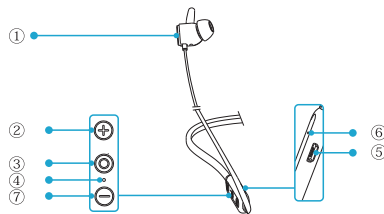
- 1 To avoid hearing damage, do not listen for extended periods at high volume.
- 2 Do not turn the volume so high that you're unable to hear your surroundings.
- 3 Do not use earphones while driving.
- 4 You should use caution or temporarily discontinue use in potentially hazardous situations.

Wireless Earphones
Product Number X13

What's Included



At a Glance



Function	
① Magnetic heads	⑤ Micro USB charging port
② Volume up button	⑥ Microphone
③ Multi-function button	⑦ Volume down button
④ LED indicator	

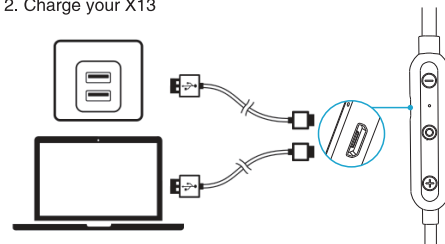
Using Your X13

1. Turn on / off

1s ON	Flashing blue once
3s OFF	Flashing red once

X13 will automatically turn off after 2 minutes if no device is connected.

2. Charge your X13

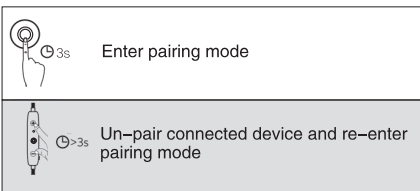
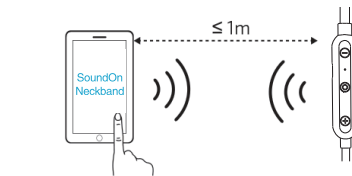
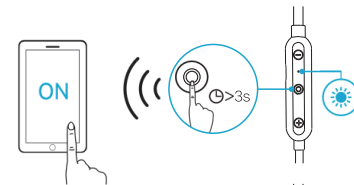


Flashing red	Low battery
Steady red	Charging
Steady blue	Fully charged

Use the included USB cable to charge your X13. Make sure they are fully charged before first use.

To preserve battery lifespan, fully charge at least once every 45 days.

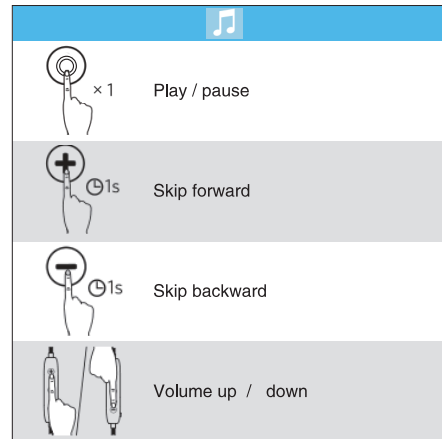
3. Pair with your device



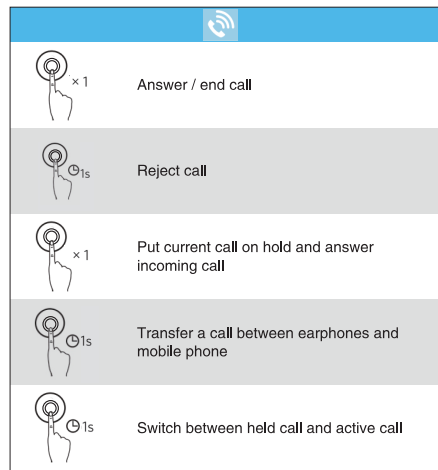
Rapidly flashing blue	Pairing mode
Steady blue	Connected to a device

When turned on, X13 will automatically connect to the last connected device if available. If not, X13 will enter pairing mode.

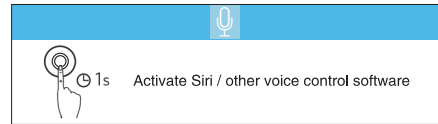
4. Controls



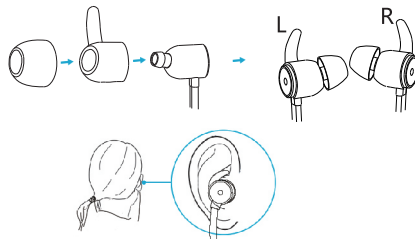
When there is an incoming call while playing music, music automatically pauses to allow you to answer/reject the call. Once the call is ignored or ended, the music resumes.



Steady blue	On a call
Flashing blue	Incoming call



5. Wear your X13



Specifications

Specifications are subject to change without notice.

Input	5 V 0.1 A
Charging time	1.5 hours
Play time (varies by volume level and content)	10 hours
Battery capacity	110 mAh
Waterproof rating	IPX5
Weight	16 g / 0.56 oz
Impedance	16Ω
Driver (full range)	8 mm × 2
Frequency response	20 Hz - 20 KHz

Wireless version	V4.1
Range	10 m / 33 ft

Notice

This product is designed and manufactured with high quality materials and components, which can be recycled and reused.

This product complies with the radio interference requirements of the European Community.

This symbol means the product must not be discarded as household waste, and should be delivered to an appropriate collection facility for recycling. Proper disposal and recycling helps protect natural resources, human health and the environment. For more information on disposal and recycling of this product, contact your local municipality, disposal service, or the shop where you bought this product.

FCC Statement

This device complies with Part 15 of the FCC Rules. Operation is subject to the following two conditions: (1) This device may not cause harmful interference, and (2) this device must accept any interference received, including interference that may cause undesired operation. Warning: Changes or modifications not expressly approved by the party responsible for compliance could void the user's authority to operate the equipment.

Note: This equipment has been tested and found to comply with the limits for a Class B digital device, pursuant to Part 15 of the FCC Rules. These limits are designed to provide reasonable protection against harmful interference in a residential installation.

This equipment generates uses and can radiate radio frequency energy and, if not installed and used in accordance with the instructions, may cause harmful interference to radio communications. However, there is no

guarantee that interference will not occur in a particular installation. If this equipment does cause harmful interference to radio or television reception, which can be determined by turning the equipment off and on, the user is encouraged to try to correct the interference by one or more of the following measures: (1) Reorient or relocate the receiving antenna. (2) Increase the separation between the equipment and receiver. (3) Connect the equipment into an outlet on a circuit different from that to which the receiver is connected. (4) Consult the dealer or an experienced radio / TV technician for help.

Customer Service

12-month limited warranty

Lifetime technical support