

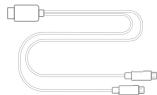
BOX CONTENTS



2× Smart Boxing Gloves



2× Motion Modules



1× USB Charging Cable
(Double head)



1× User Guide

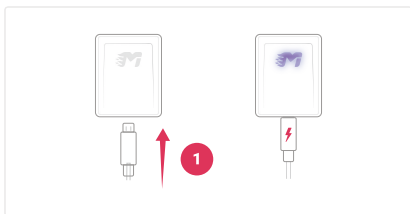


1× Glove Bag

INSTRUCTIONS FOR FIRST USE

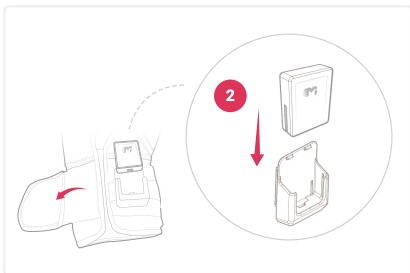
1. Activate the Motion Module

- Insert the charging cable into a USB power source, then connect each motion module separately.
- Please charge the motion modules for at least 20 minutes before use.



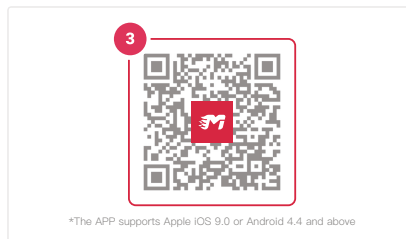
2. Inserting the Motion Modules

Please carefully align and insert each module into the glove slot as shown.



3. Download the Move It Swift APP

Scan the QR code to download the Move It Swift APP, or search "Move It Swift" from the Apple App store or Google Playstore.



4. Pair the modules with the APP

⚠ Android users may be prompted by Google to turn on GPS to allow for a better bluetooth signal detection.

- 4.1 The product can only be paired and set up through the Move It Swift APP.
- 4.2 Shake both Gloves or Motion Modules to wake it from sleep. The modules will blink blue and red.
- 4.3 Turn on the mobile phone's Bluetooth (ignore and cancel the mobile OS's default Bluetooth device selection menu prompt).
- 4.4 Open the Move It Swift APP, register or login to your account, select "Me - Devices" then assign each Glove or Motion Module to your corresponding left and right hand.

5. Start your workout

From the Move It Swift app's home screen, select "Training", then choose your workout mode to start your exercise.

STATUS INDICATORS

1. Glove Lighting Effects



2. Motion Module

Color	Light status	Device status
● Purple	fully lit	battery is charging
● No color	lights off	battery is fully charged
● Red & Blue	alternating	awaiting to be paired/ connected with the Move It APP
● Blue	fully lit	left glove is connected
● Red	fully lit	right glove is connected
● Purple	slow pulse	firmware is updating

SPECIFICATIONS

Motion Module

Dimension	H43mm * W34mm * D12mm
Materials	ABS
Battery Capacity (mAh)	300mAh Lithium Battery
Wireless Connection	BLE
Charging Port	MicroUSB (Double head)
Sensor	6-Axis Gyro Sensor
Standby Time	Approx.1 months
Continuous Use Time	Approx. 4 hours
Charge Time	Approx. 40 mins.

Glove Light Panel

Dimension	H53mm * W10mm
Color	Full RGB Led

Boxing Gloves (Glove model: MVBG0001)

Weight (oz)	Length (cm)	Width (cm)	Head Thickness (cm)
8	27	27	27
10	27	27	27
12	28	28	28
14	29	29	29
Materials	PU, Cotton, Mesh Fabric, Elastic Band		

* Deviation ±2cm



FAQ

Q : How do I charge the smart gloves?

A : The Motion Modules charge individually through a microUSB port. Remove the Motion Modules from the gloves, insert a microUSB cable into the module, then connect the cable to a USB power source.

Q : How long does it take to fully charge each Motion Module?

A : Each module takes approximately 40 minutes to fully charge. While charging the Motion Module will light up red, and once the module is fully charged, the lights will turn off.

Q : How long is the usage duration on a full charge?

A : A full charge can provide approximately 4 hours of continuous use. On standby (sleep mode), the product can maintain its battery capacity for about one month.

Q : What is the effective Bluetooth connection range of the product?

A : In an open empty space, the product can maintain a stable Bluetooth connection up to 30 meters. However, in normal home environments with other wireless devices nearby, the product's furthest optimal range is about 10 meters.

ADDITIONAL INFORMATION

- To avoid signal interference during the initial pairing and setup process, please turn off nearby Bluetooth devices.
- If you are still unable to detect your device during the pairing and setup process within the App, restart your phone or try turning the Bluetooth off and back on again.
- For iPhone users with IOS 11 and higher, the system may periodically place the Bluetooth into sleep mode, therefore you may need to toggle Bluetooth off and back on again.

CLEANING AND MAINTENANCE

Surface Cleaning

1. The gloves are not water proof and should not be submerged in water. Water can damage the interior foam and the internal electric circuitry.
2. The gloves should only be wiped gently with a cloth. Avoid alcohol or other harsh chemical liquids, as it can damage the glove materials.
3. Do not wipe the gloves with wet paper towels over a prolonged duration of time. The leather can corrode if subjected to long term contact with water.

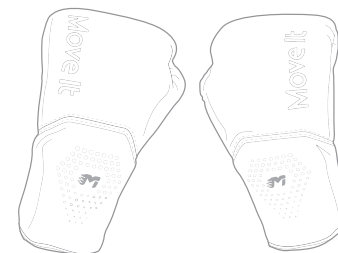
Do not expose the gloves to the sun for a prolonged duration of time. Long term exposure will cause the gloves to age and dry out.

Surface Cleaning

1. The Motion Modules are not water resistant and should be removed prior to cleaning the gloves.
2. Soak a cloth in clean water, wring it well, then gently wipe off any surface stains from the leather gloves.

Regular Maintenance

1. Sweat may cause odor overtime. To improve the longevity of the gloves, after using the gloves, place them in a cool and ventilated place so they may properly dry.
2. Baking soda is an effective deodorizer that can help neutralize odors. If odor develops and persists, you may cover any exposed electrical ports with masking tape, then carefully and generously sprinkle a palm-full of baking soda on the smooth surface side of the interior. Let the gloves sit in a cool place for approximately 2-3 days. Empty the gloves of baking soda in a bin, then pat the gloves thoroughly to remove any excessive powder.



User manual

v 1.8

FCC Statement

Any Changes or modifications not expressly approved by the party responsible for compliance could void the user's authority to operate the equipment.

This device complies with part 15 of the FCC Rules. Operation is subject to the following two conditions:

(1) This device may not cause harmful interference, and

(2) This device must accept any interference received, including interference that may cause undesired operation.

RF warning for Portable device:

The device has been evaluated to meet general RF exposure requirement. The device can be used in portable exposure condition without restriction.

Note: This equipment has been tested and found to comply with the limits for a Class B digital device, pursuant to part 15 of the FCC Rules. These limits are designed to provide reasonable protection against harmful interference in a residential installation. This equipment generates, uses and can radiate radio frequency energy and, if not installed and used in accordance with the instructions, may cause harmful interference to radio communications. However, there is no guarantee that interference will not occur in a particular installation. If this equipment does cause harmful interference to radio or television reception, which can be determined by turning the equipment off and on, the user is encouraged to try to correct the interference by one or more of the following measures:

- Reorient or relocate the receiving antenna.
 - Increase the separation between the equipment and receiver.
 - Connect the equipment into an outlet on a circuit different from that to which the receiver is connected.
 - Consult the dealer or an experienced radio/TV technician for help.
-