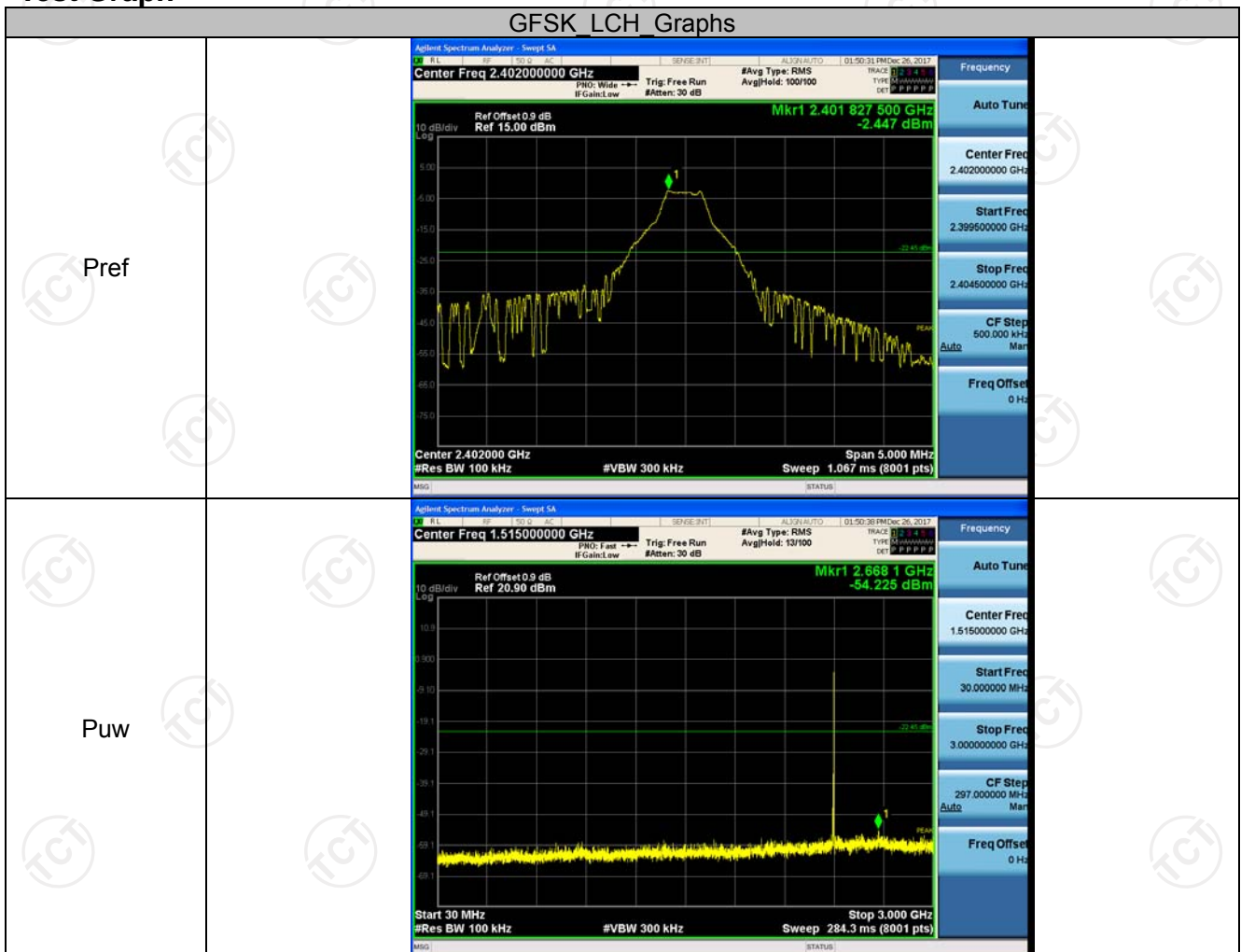


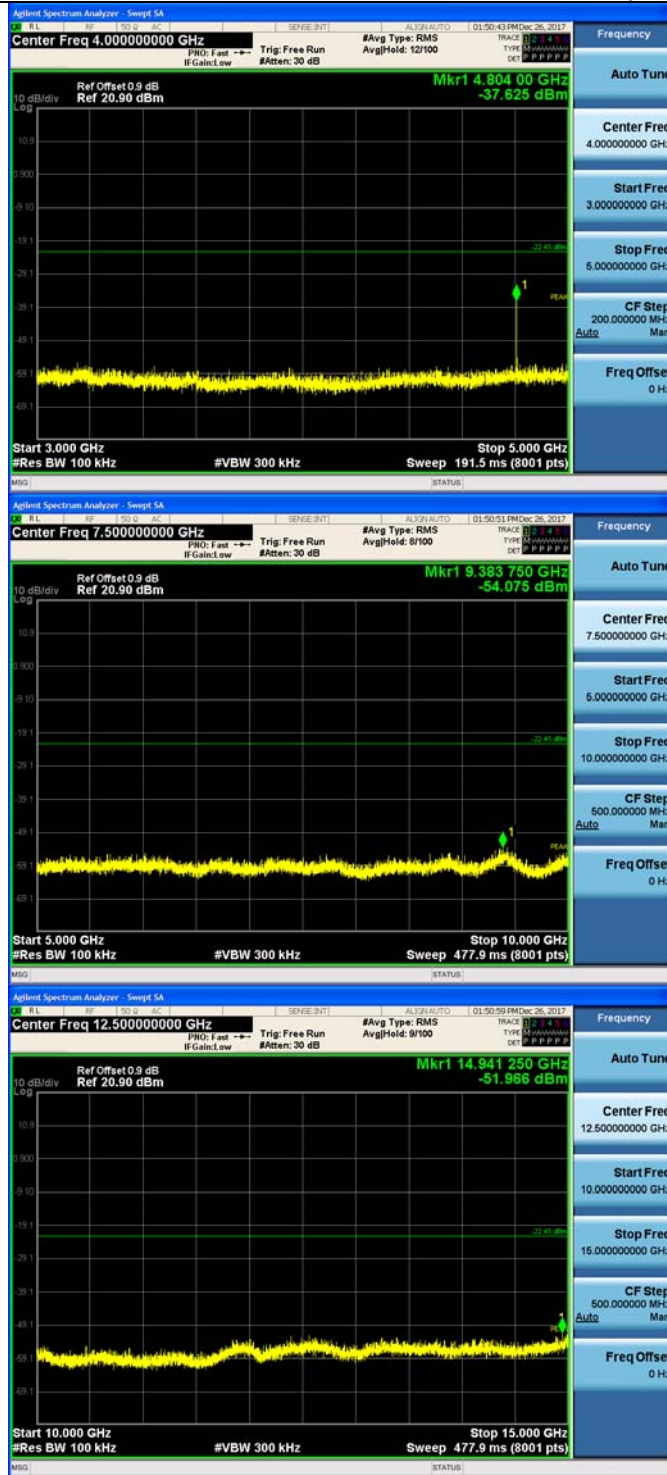
RF Conducted Spurious Emissions

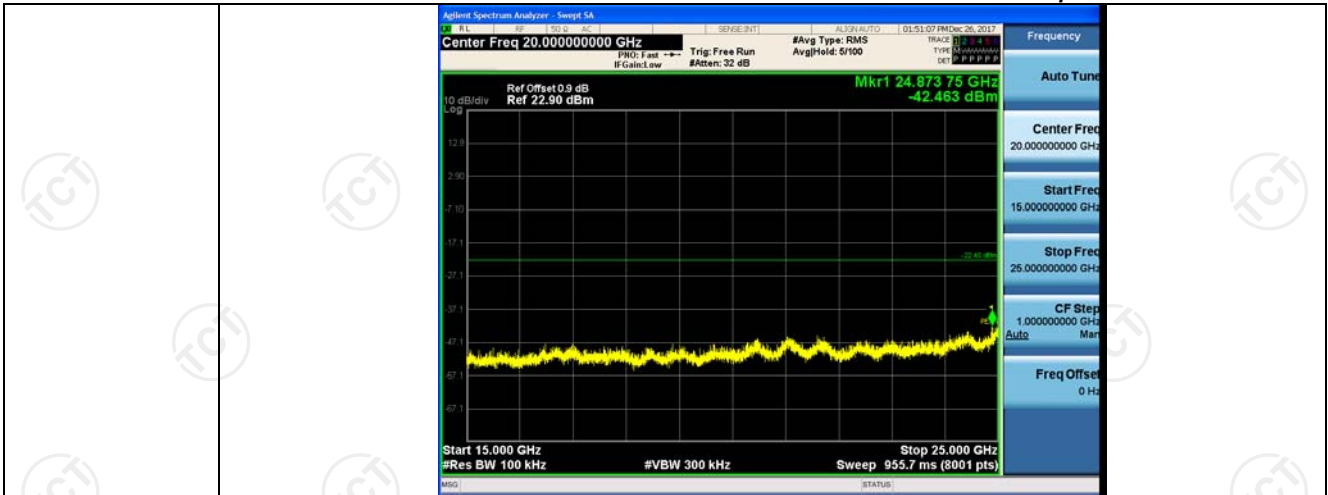
Result Table

Mode	Channel	Pref [dBm]	Puw [dBm]	Verdict
GFSK	LCH	-2.447	<Limit	PASS
GFSK	MCH	-2.178	<Limit	PASS
GFSK	HCH	-2.225	<Limit	PASS
$\pi/4$ DQPSK	LCH	-2.281	<Limit	PASS
$\pi/4$ DQPSK	MCH	-2.13	<Limit	PASS
$\pi/4$ DQPSK	HCH	-1.646	<Limit	PASS

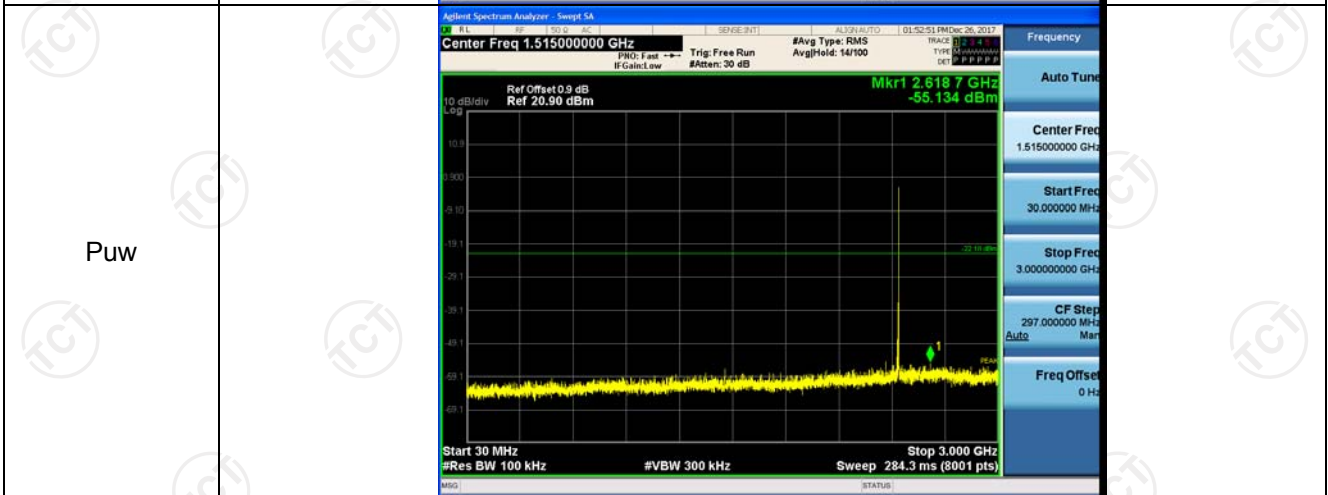
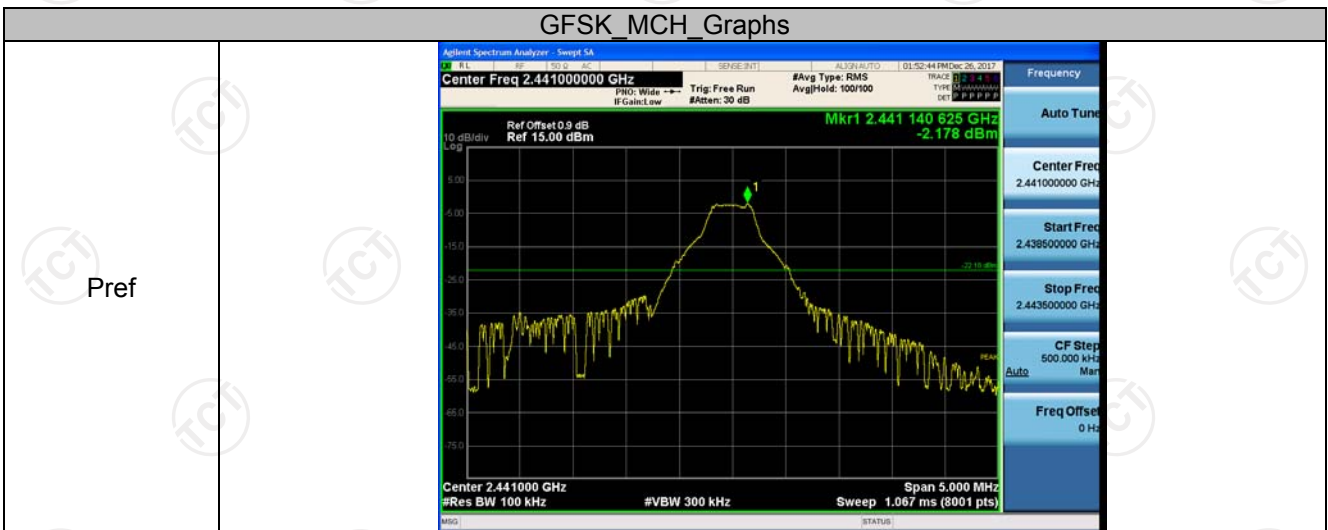
Test Graph

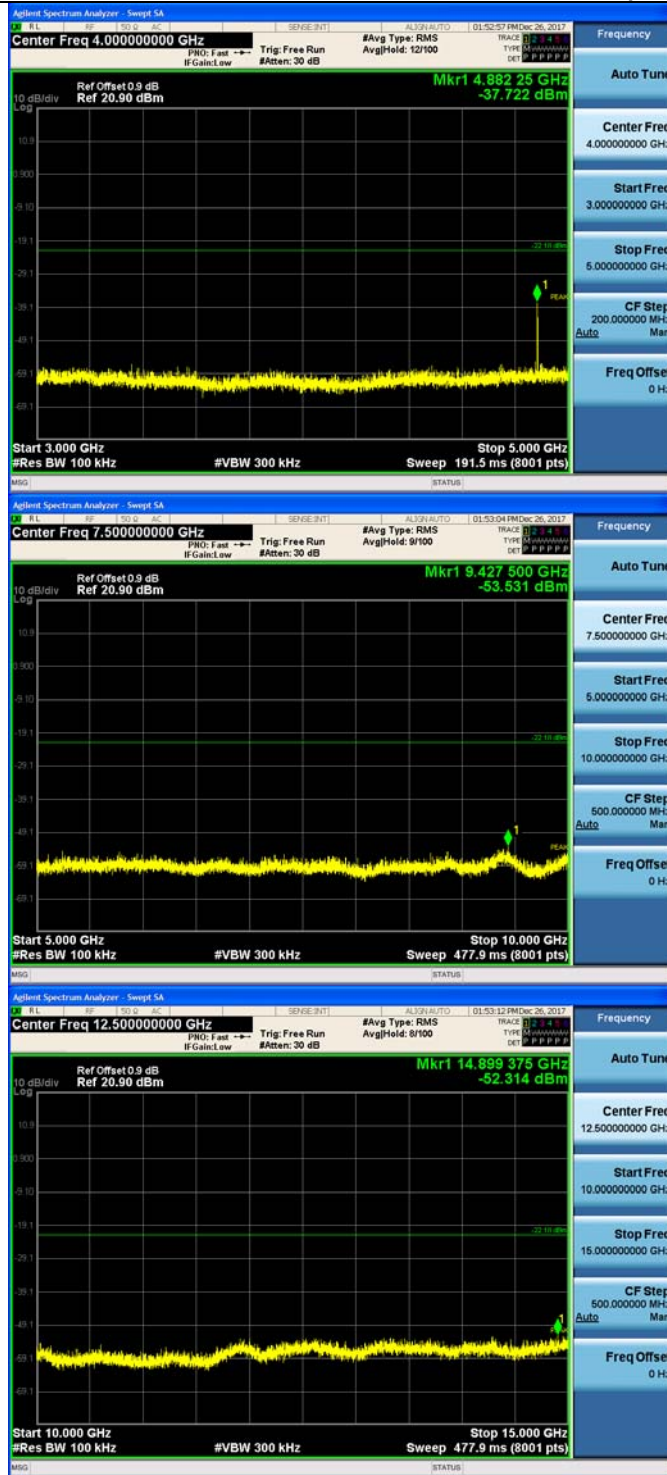


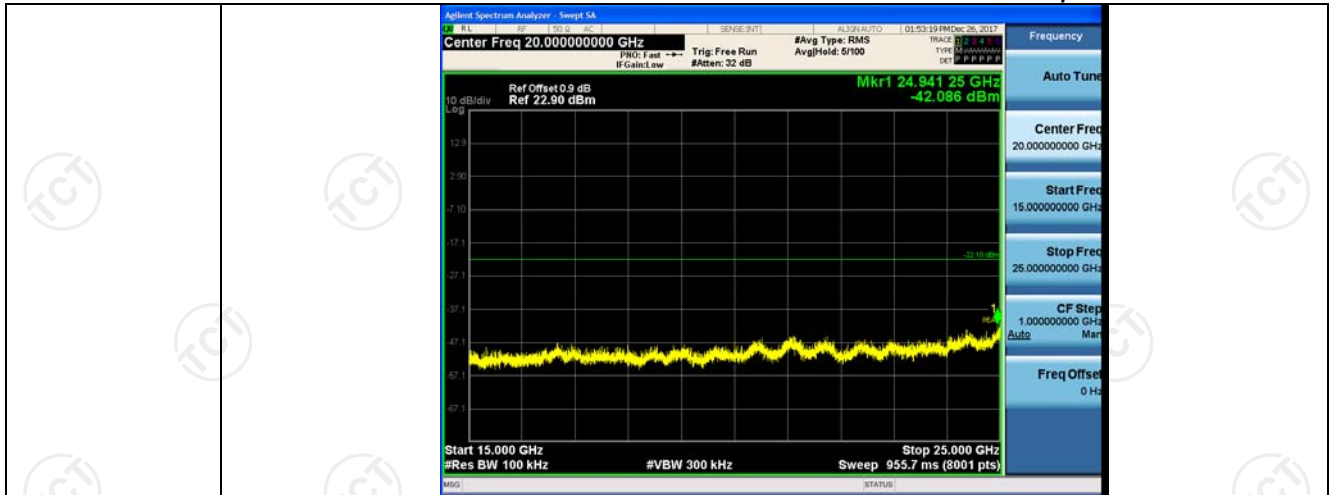




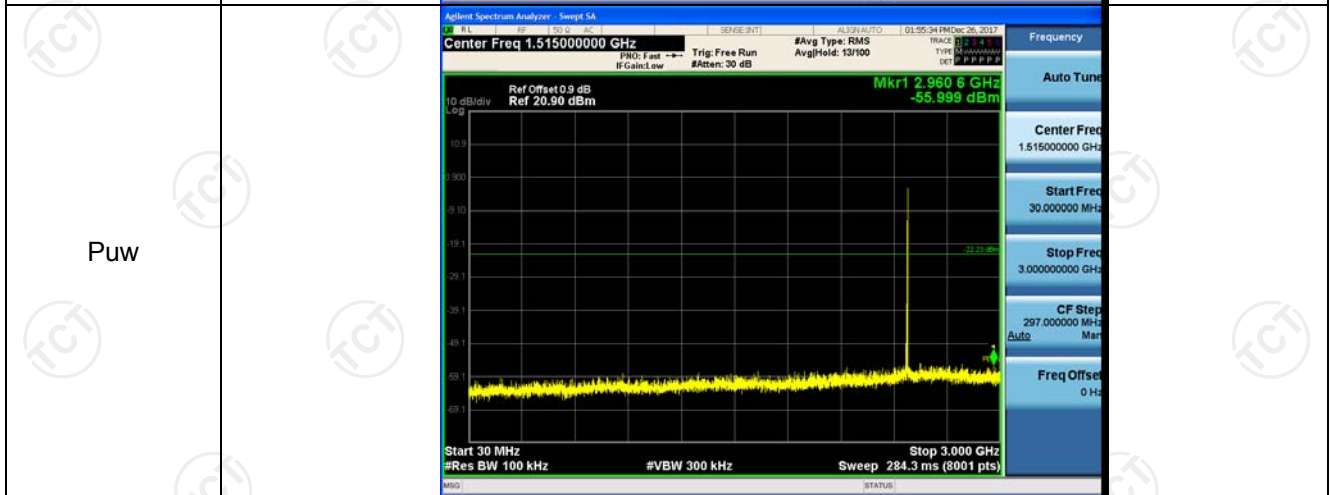
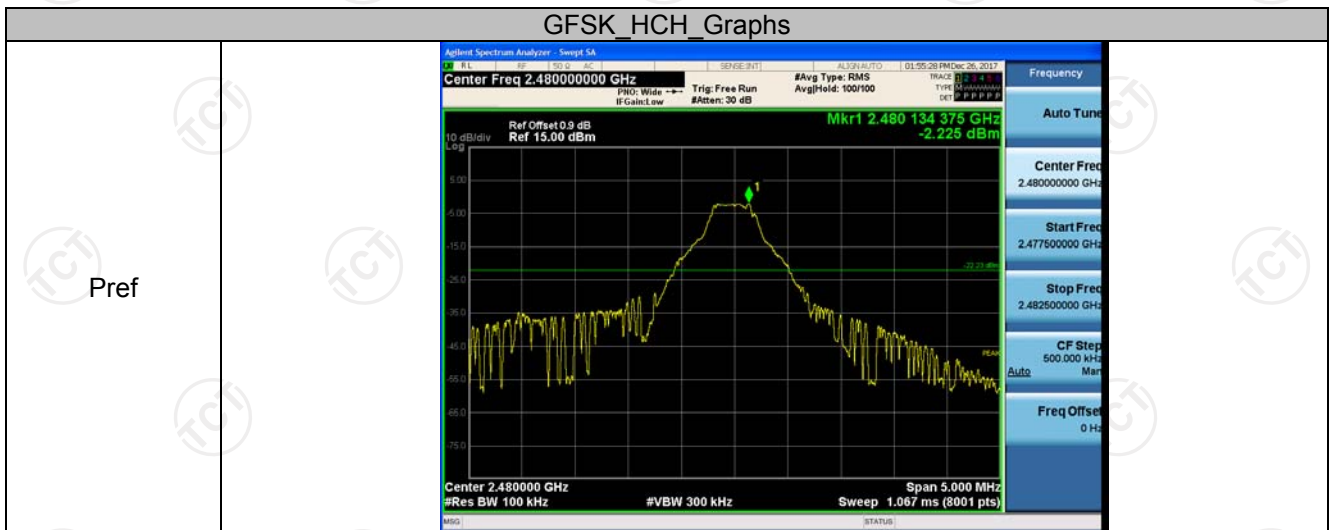
GFSK MCH Graphs

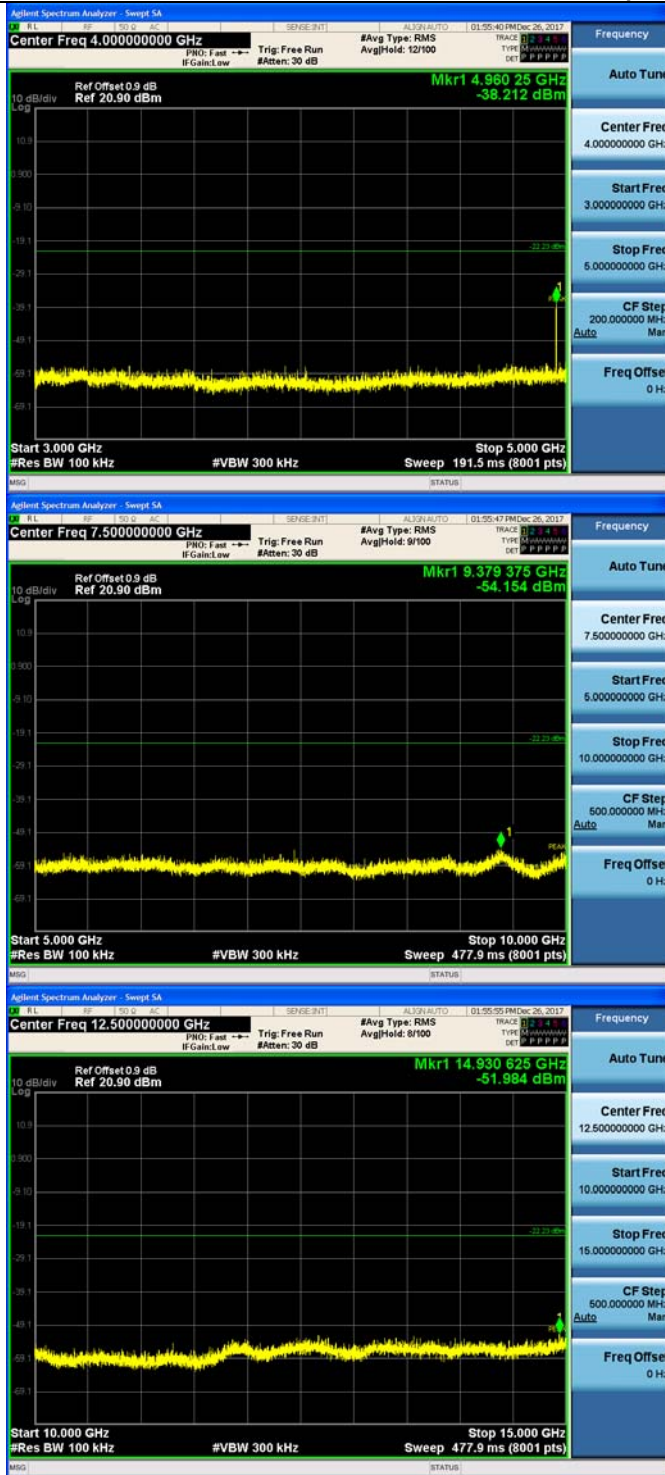


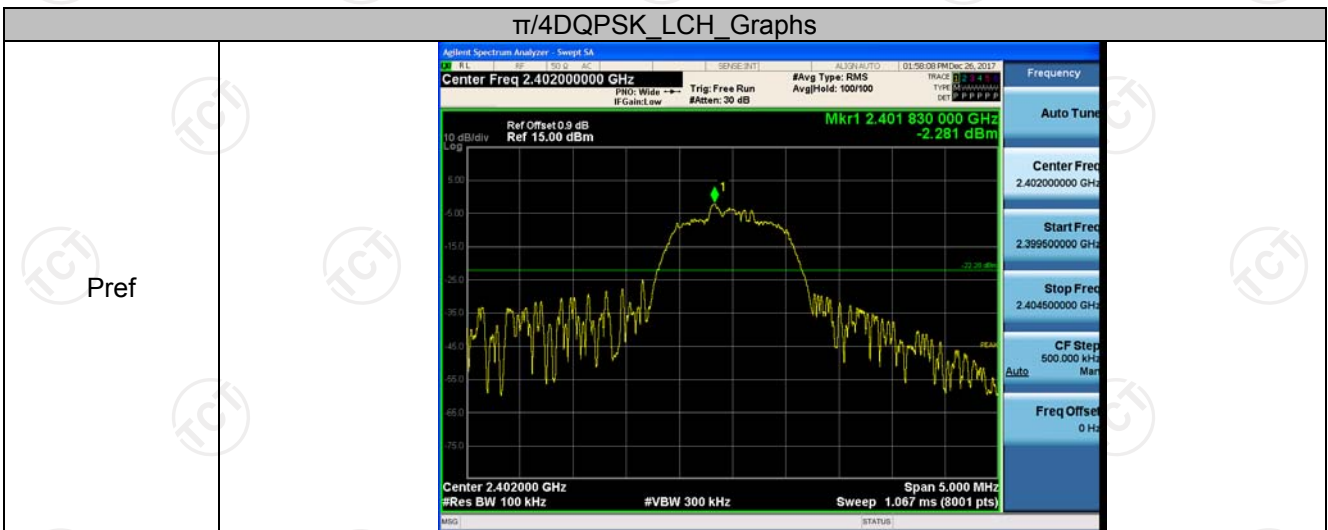
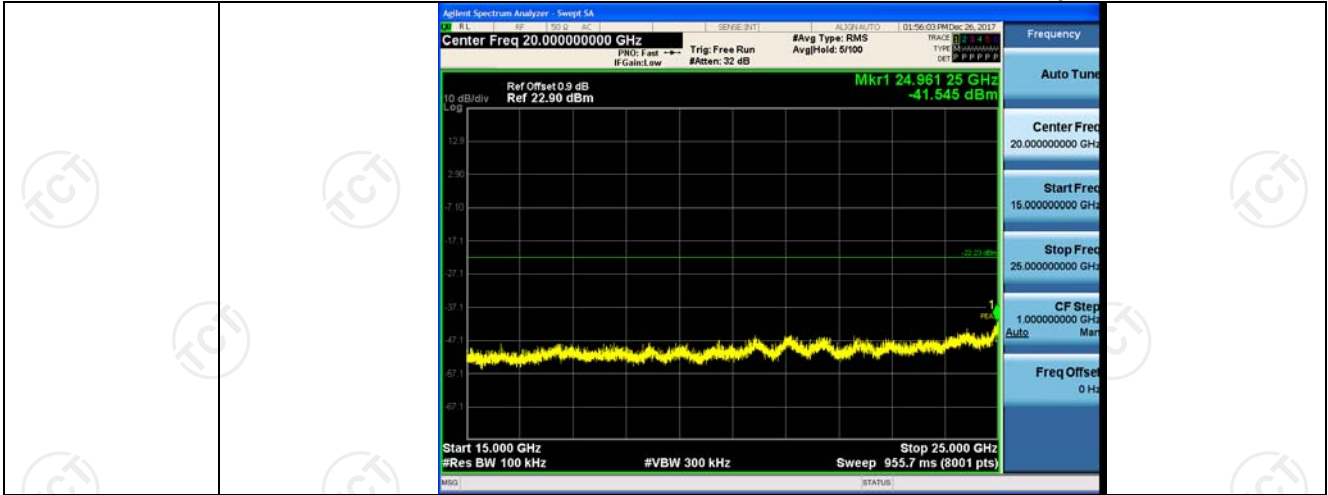




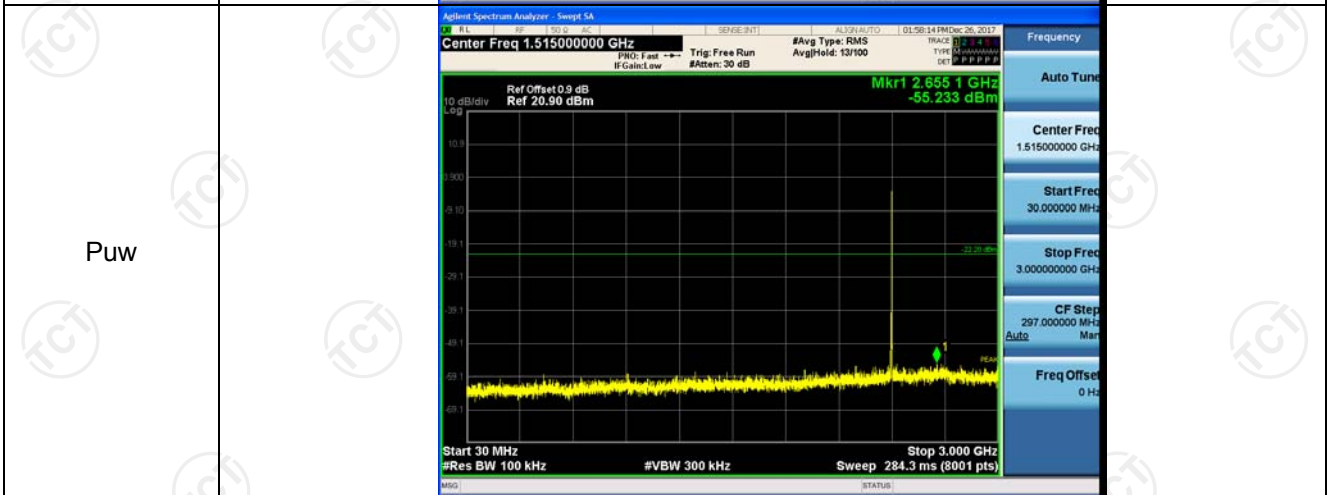
GFSK HCH Graphs



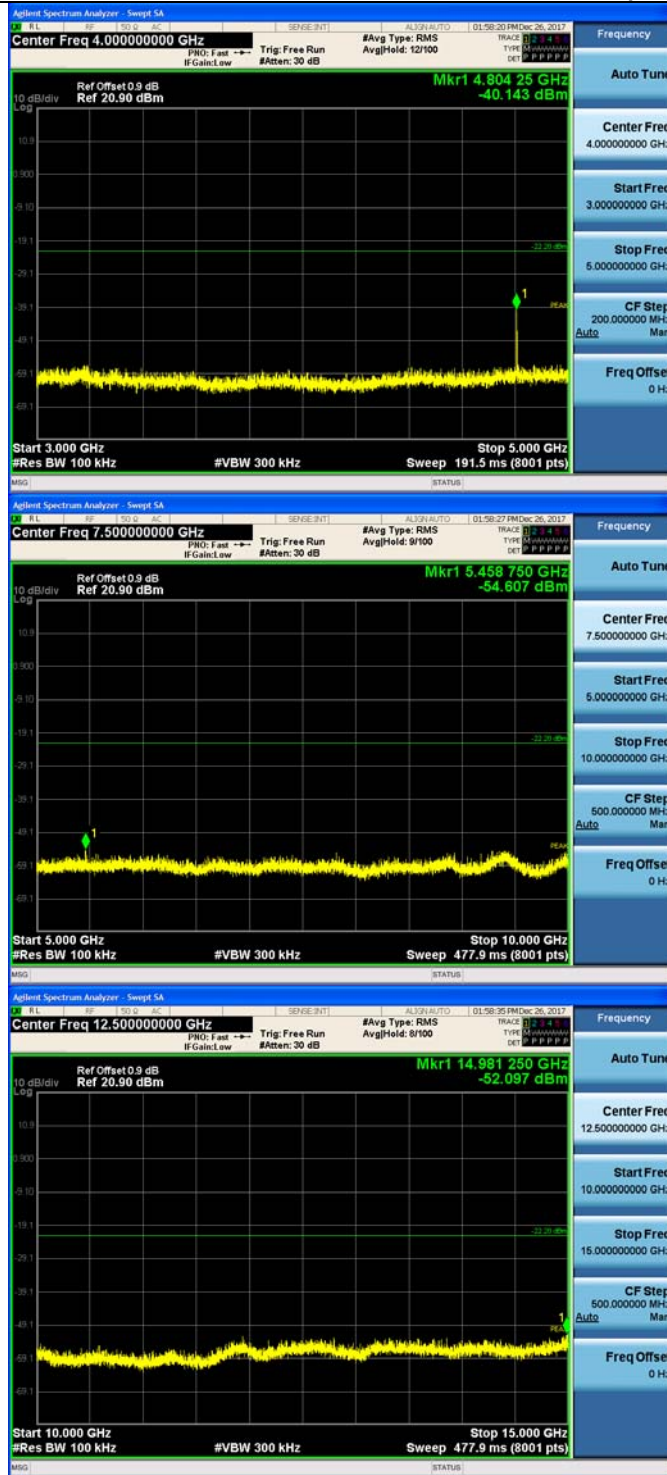


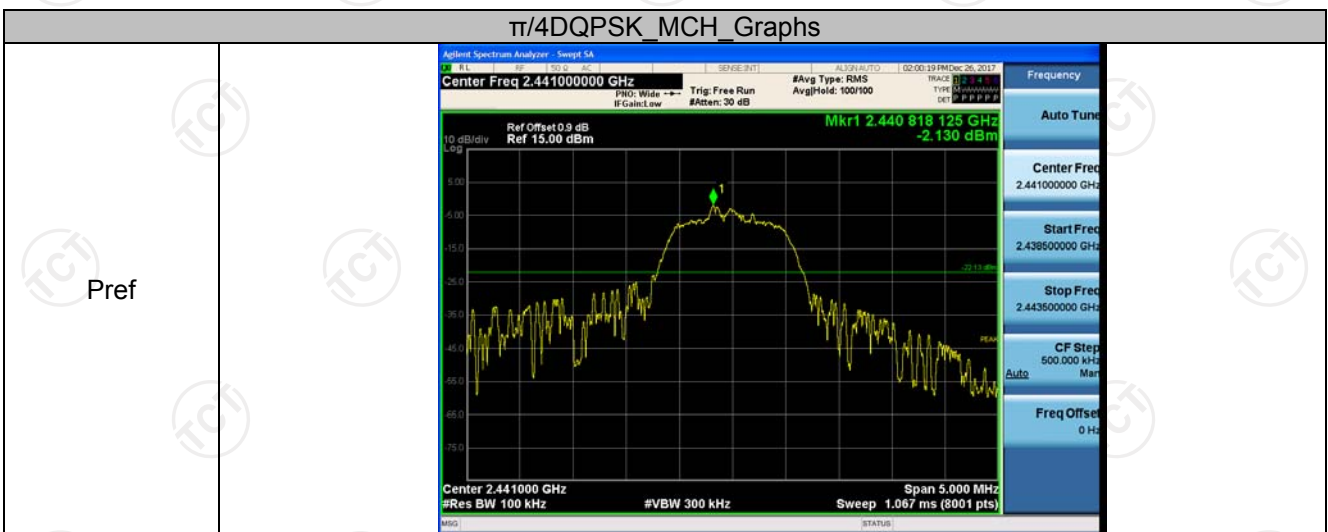
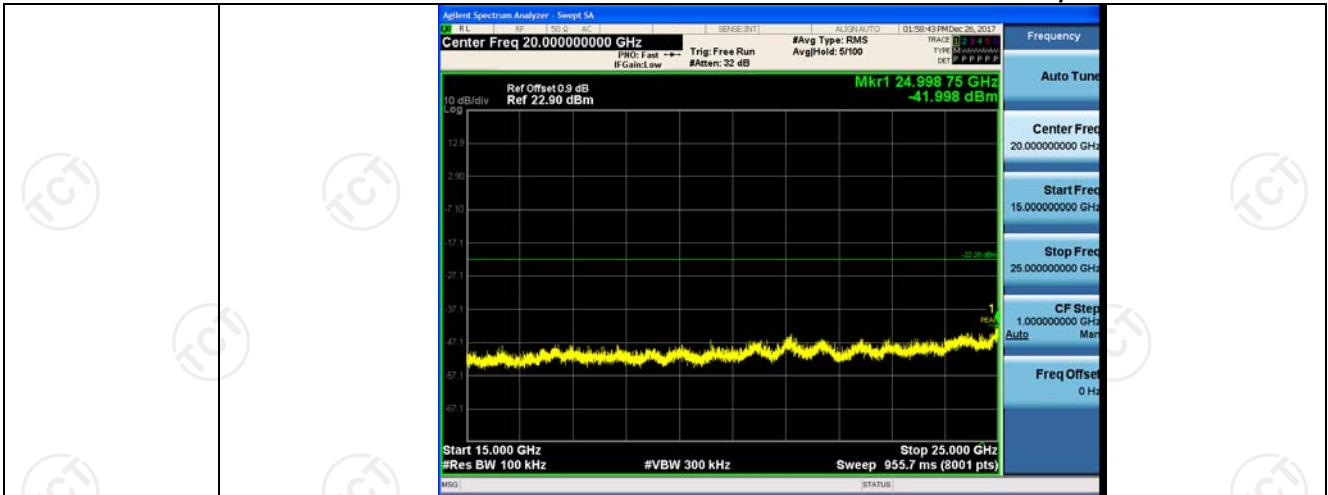


Pref

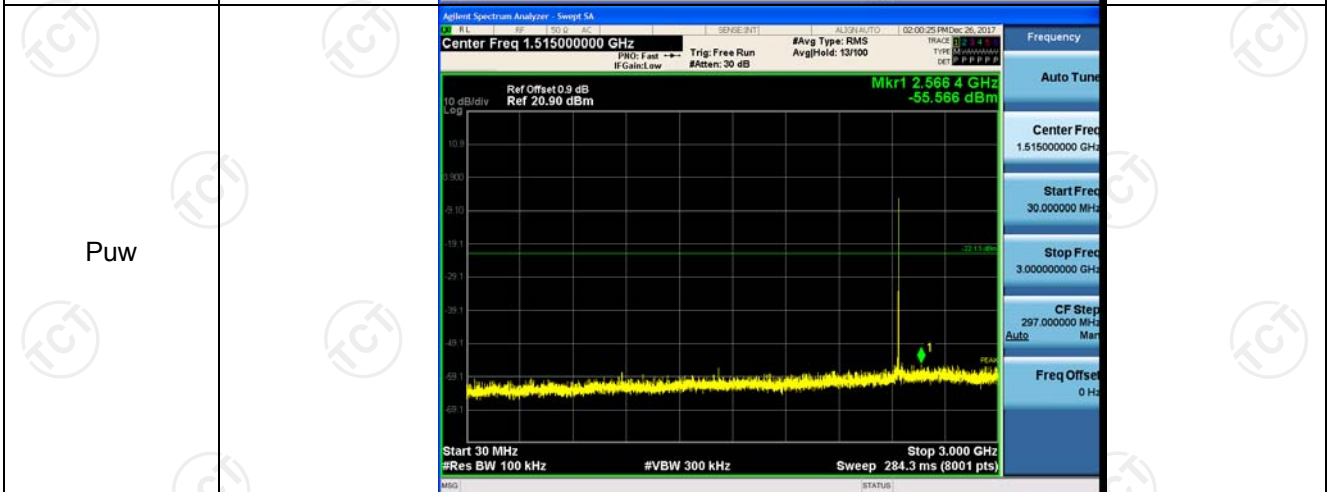


Puw

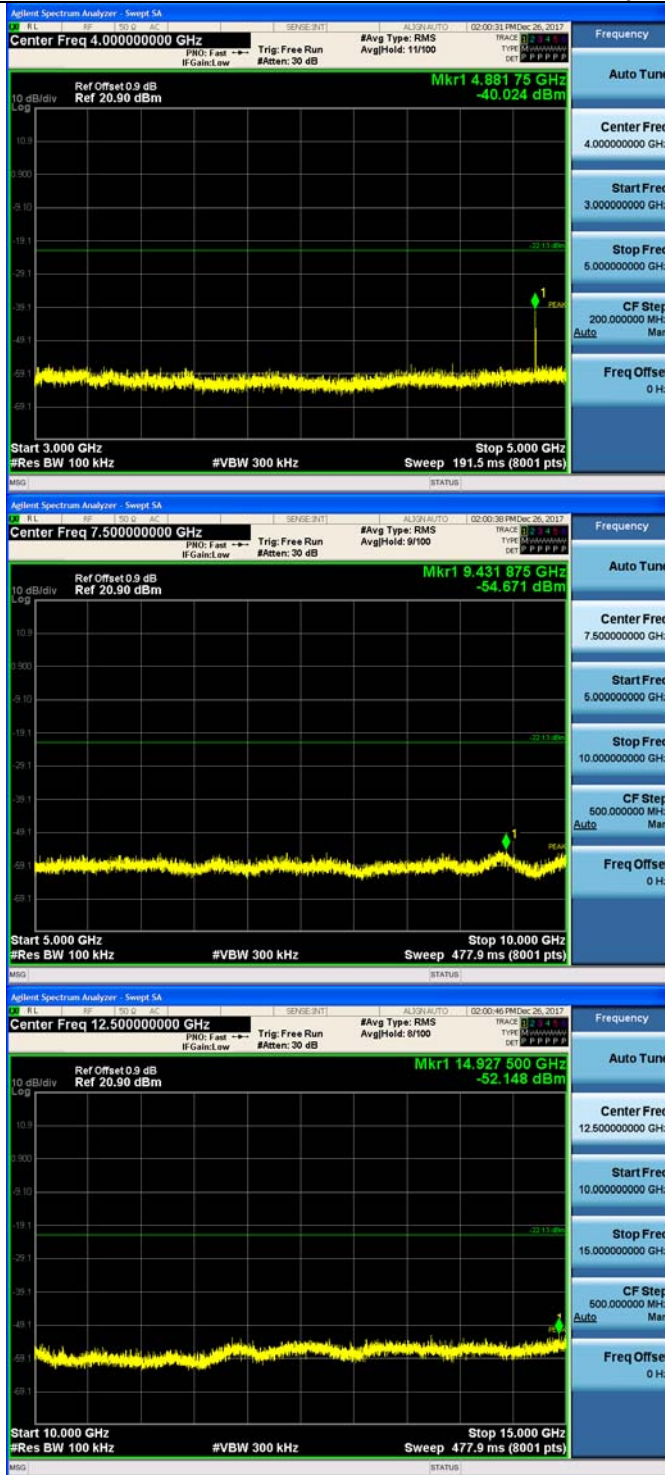


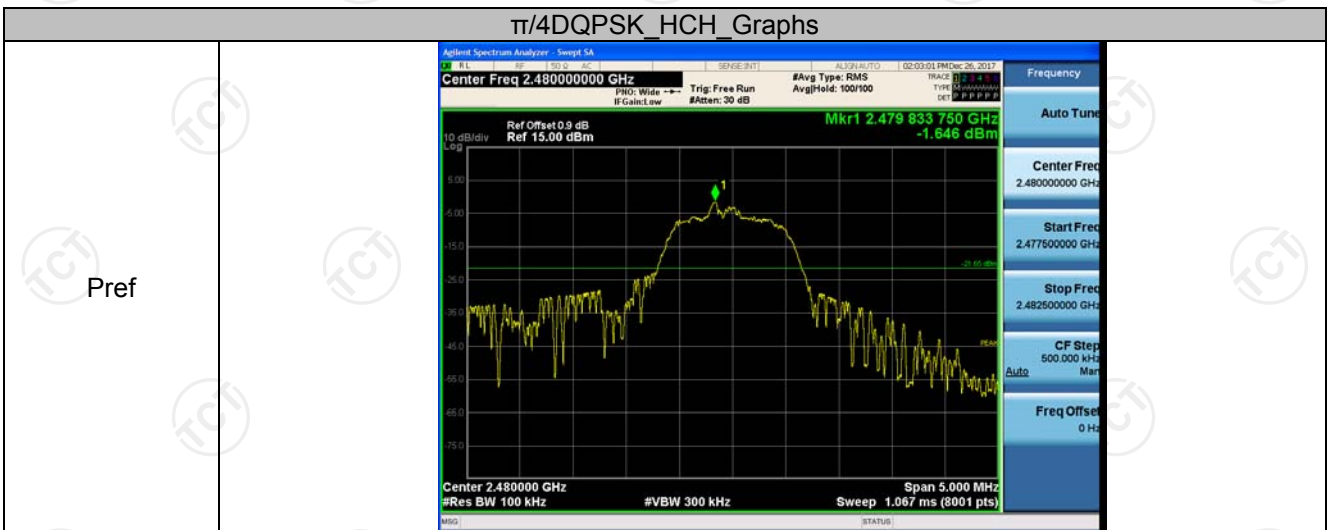
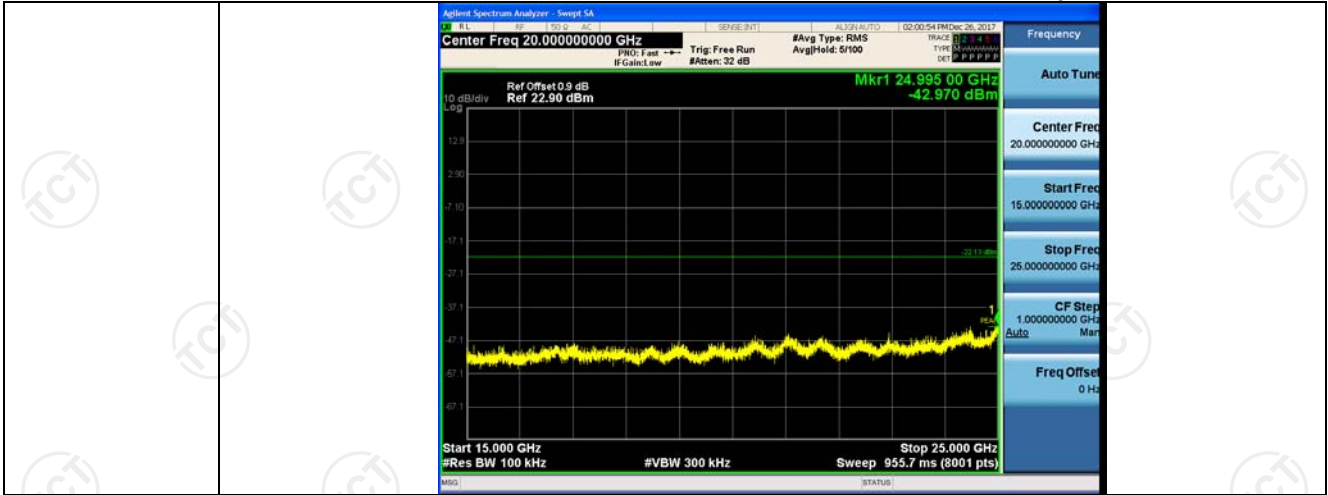


Pref

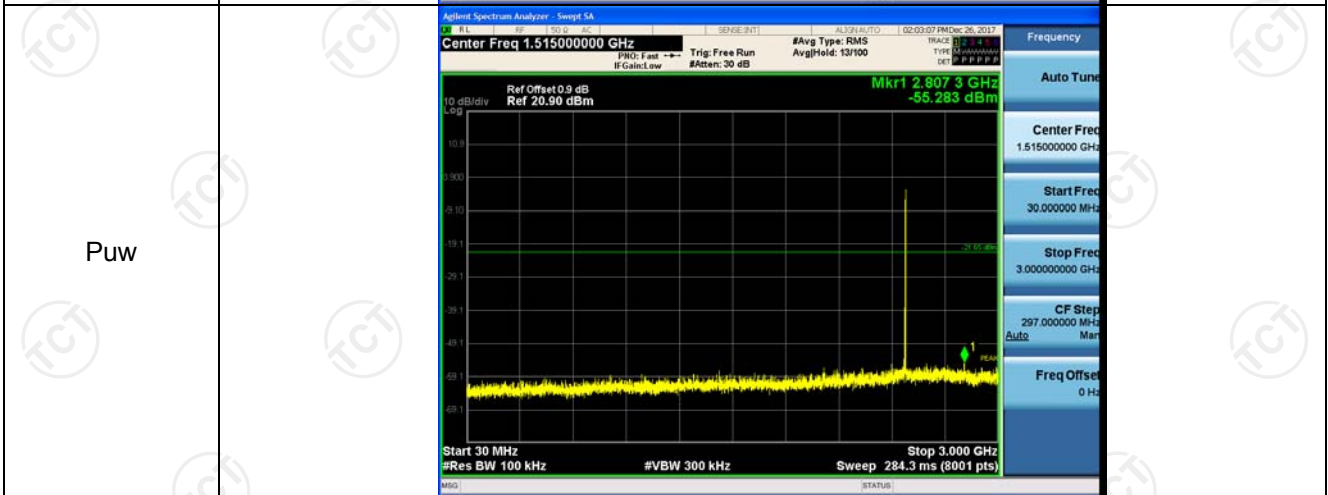


Puw

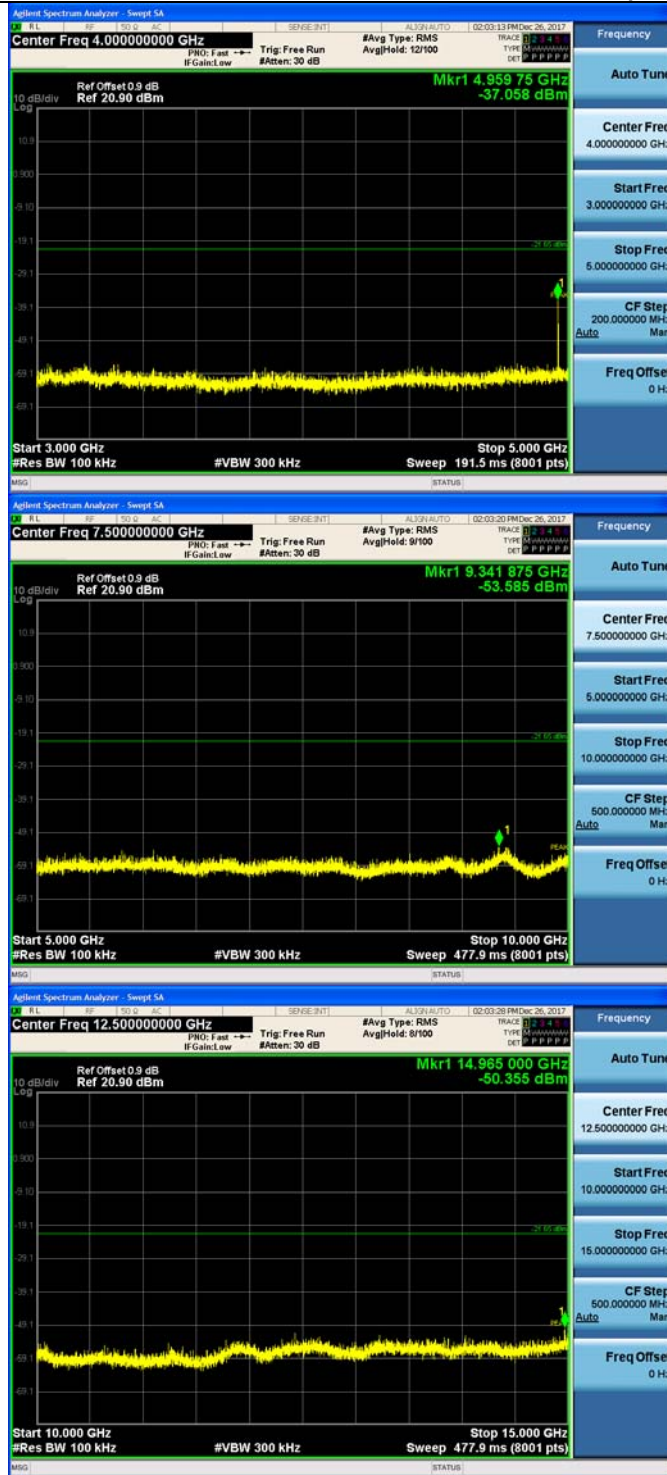


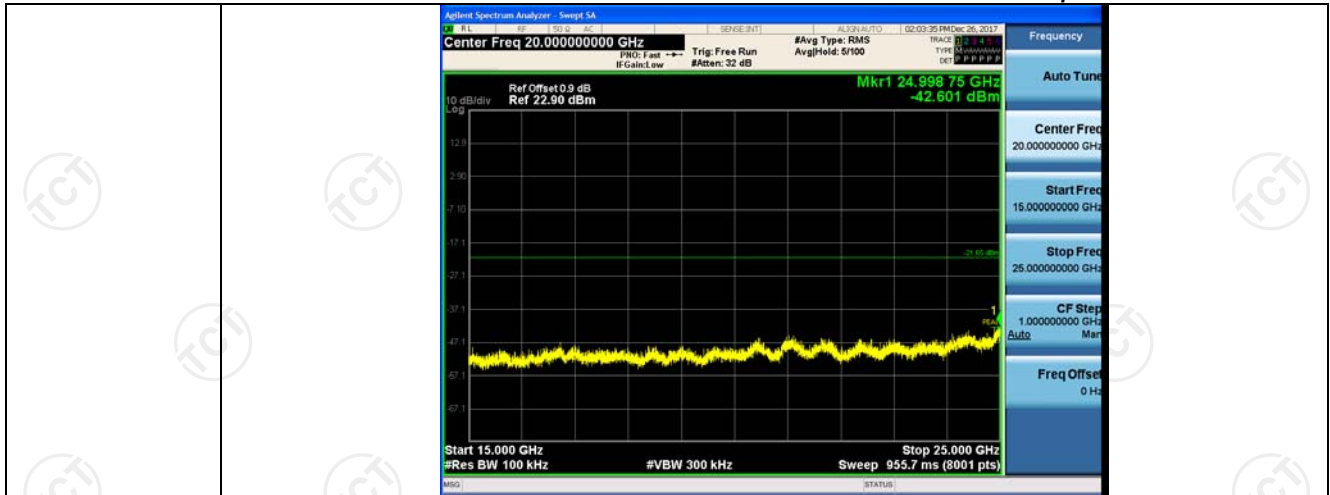


Pref



Puw



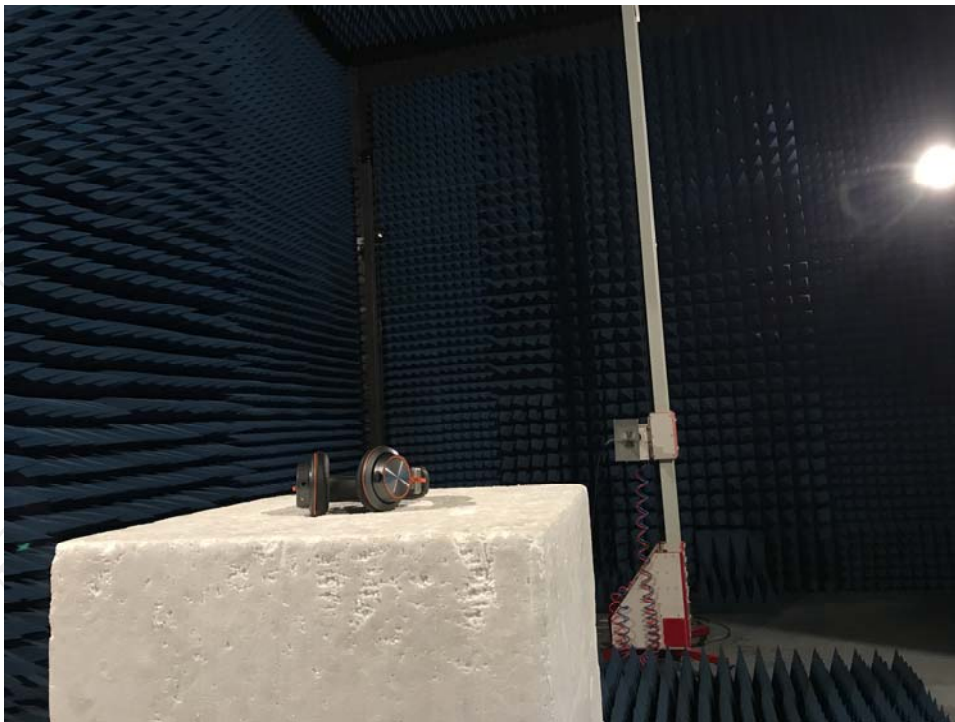
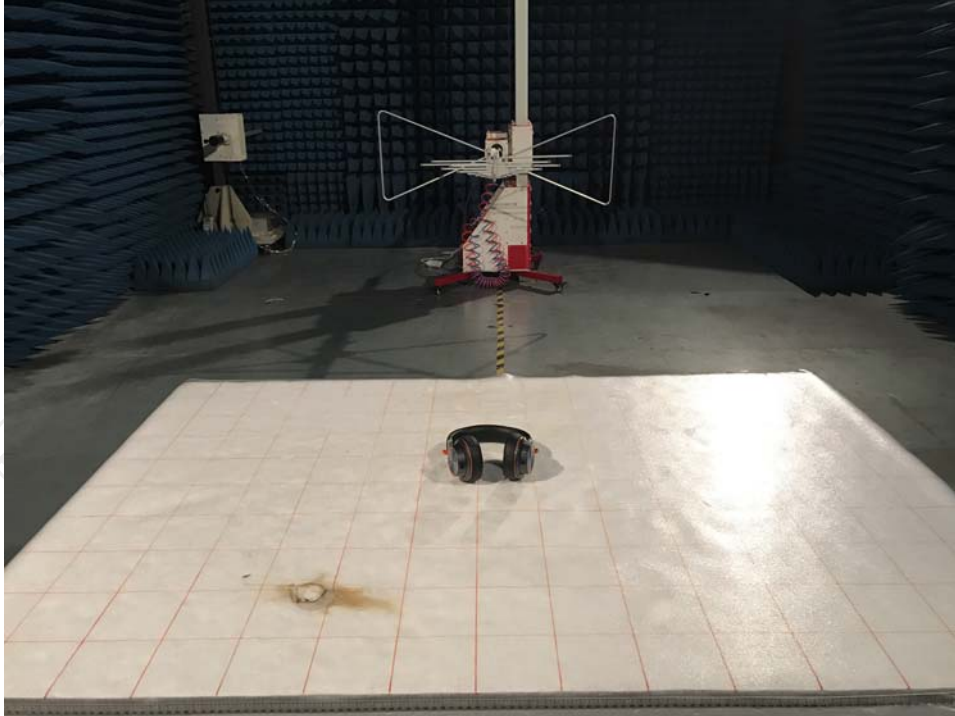


Appendix B: Photographs of Test Setup

Product: Wireless Headphone

Model: S2

Radiated Emission



CE



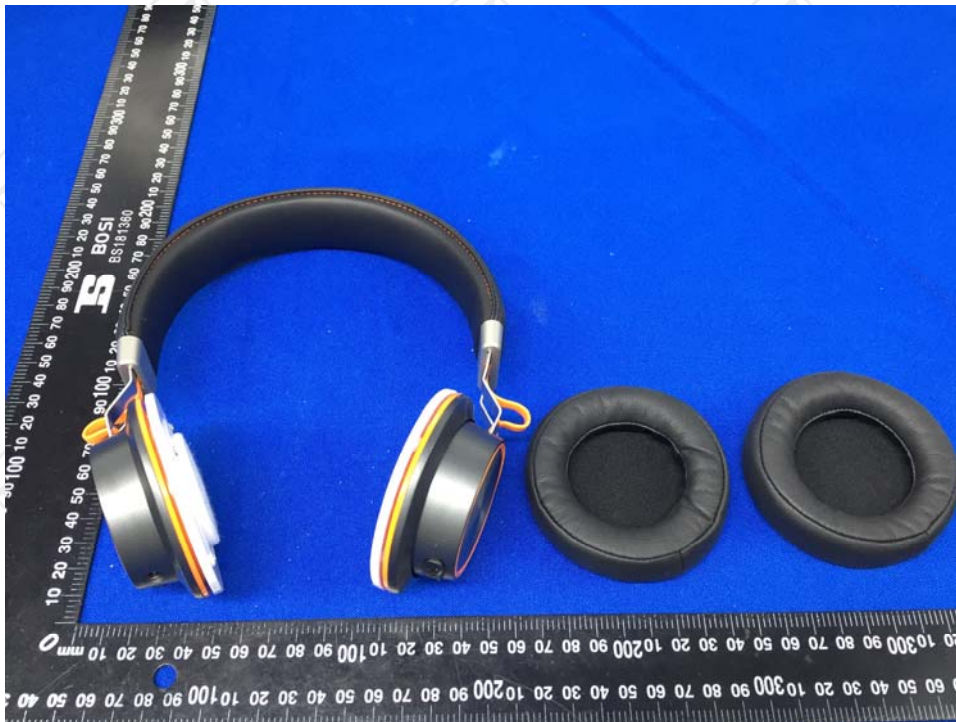
**Appendix C: Photographs of EUT
Product: Wireless Headphone
Model: S2
External Photos**





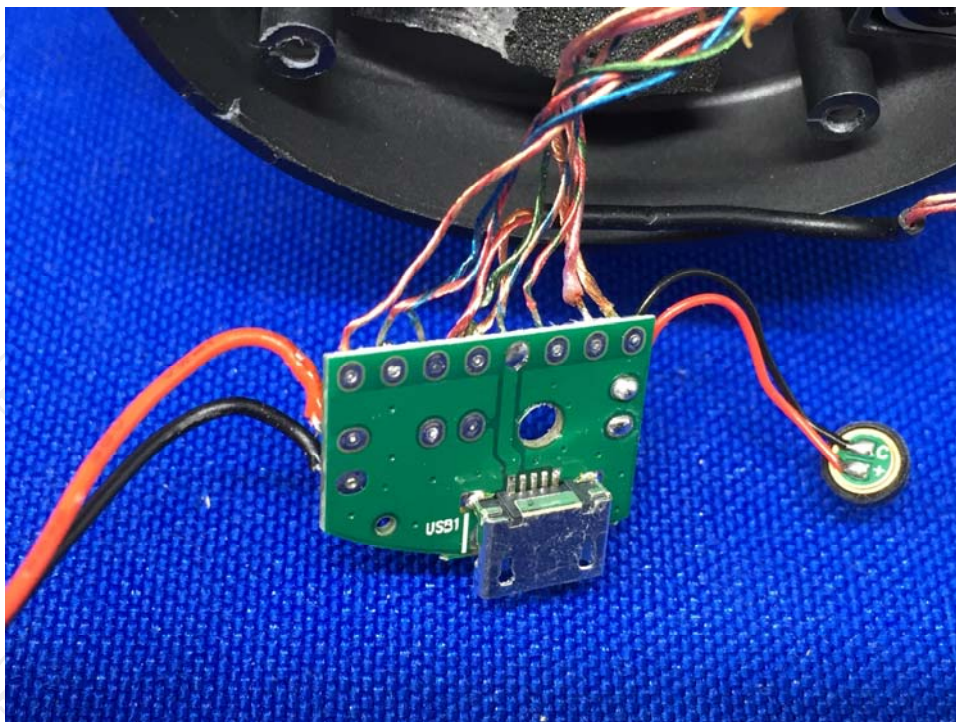
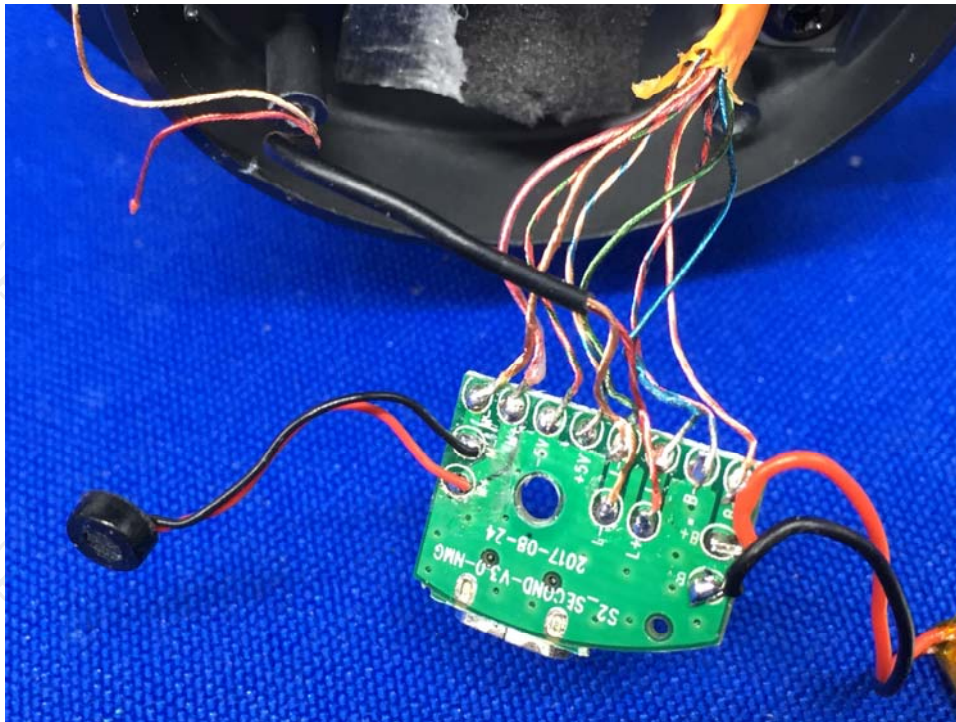


Product: Wireless Headphone
Model: S2
Internal Photos

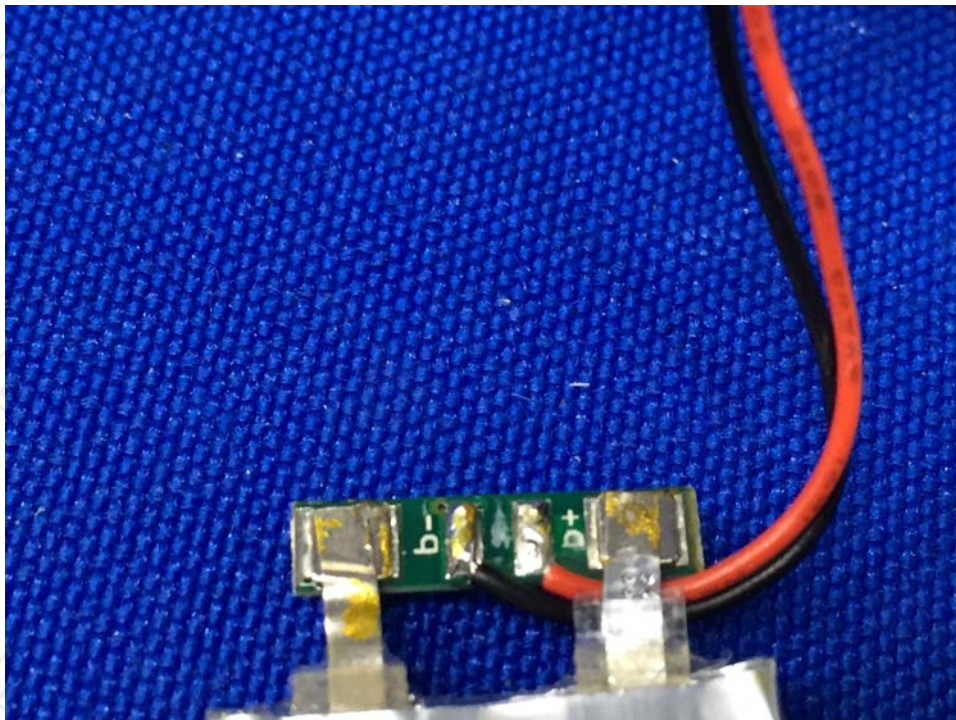
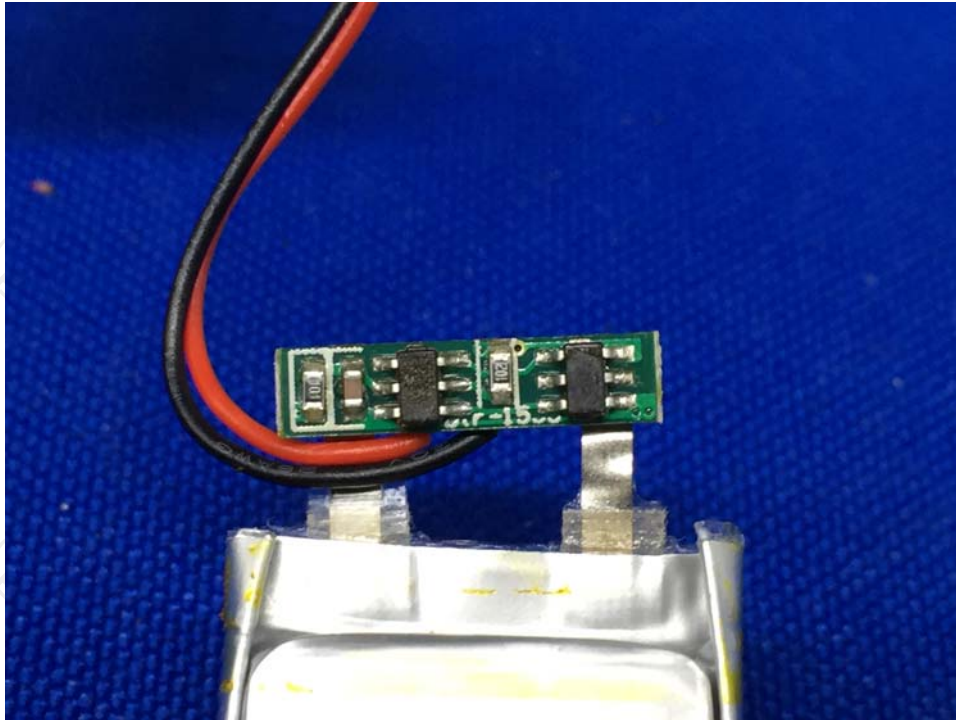


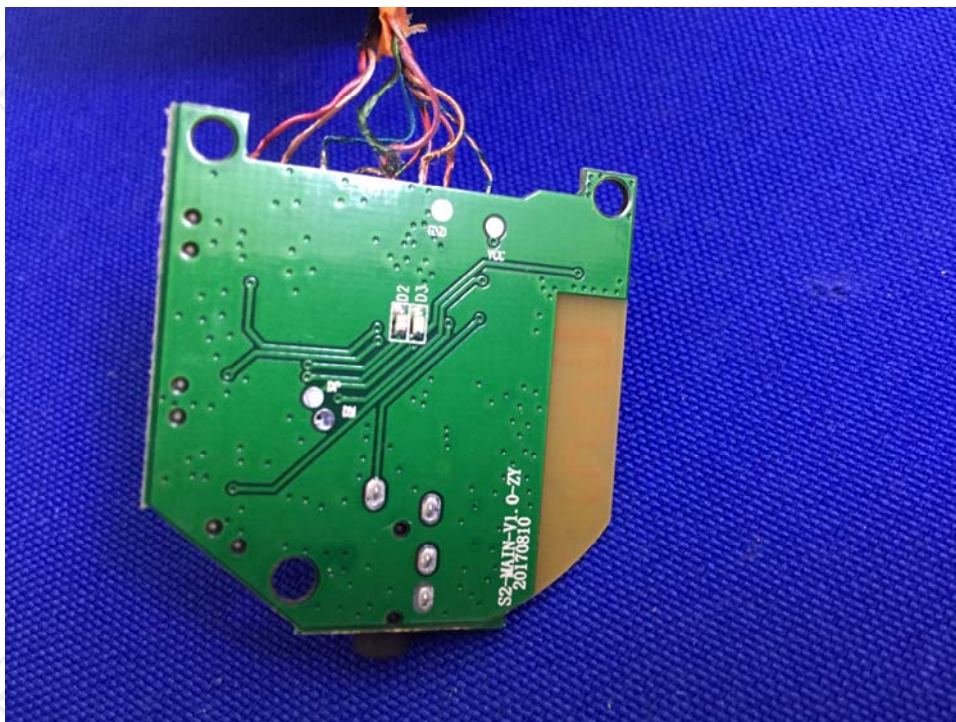
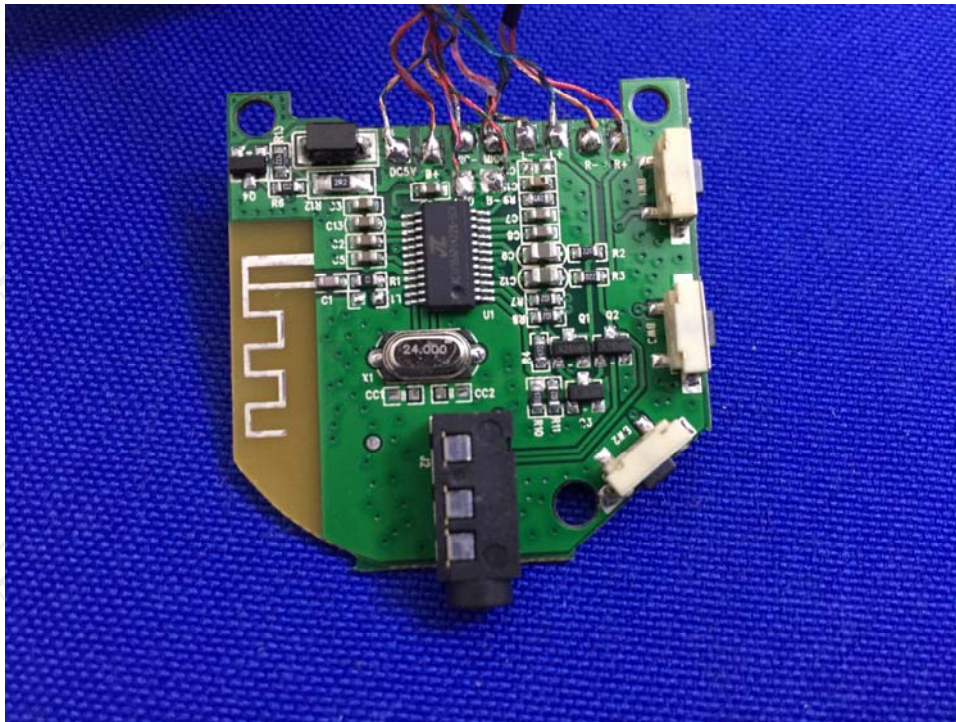












*******END OF REPORT*******