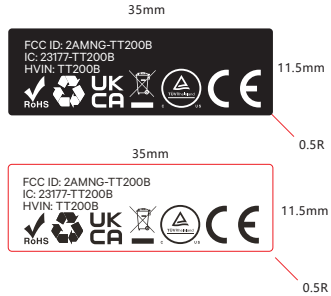


CT541 KDS 机身铭牌

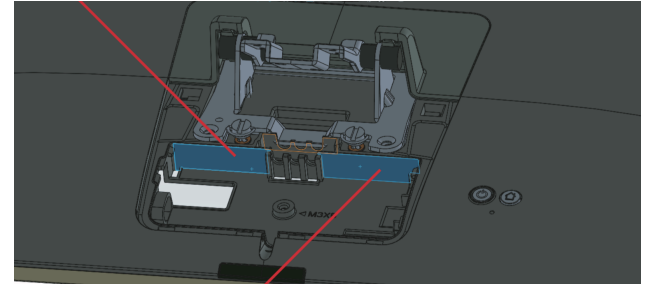


技术参数

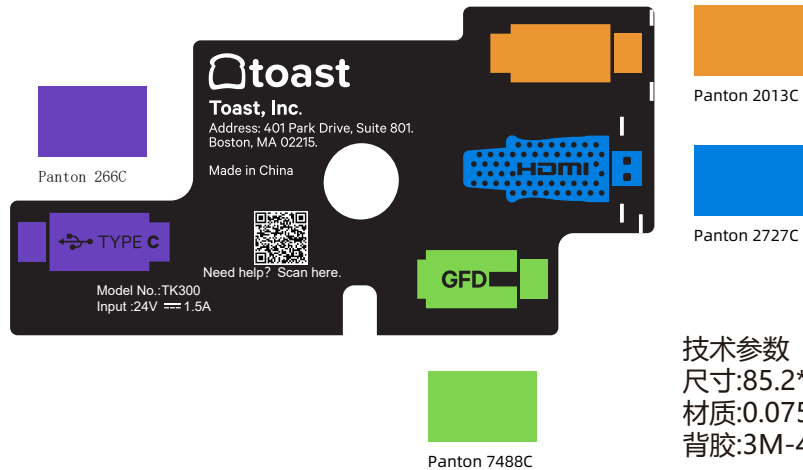
尺寸:35*11.5mm

材质:0.075mm厚黑色/白色PC(DFR116ECOB), 表面纹理:SPI-C2
背胶:3M-467, 厚度0.05mm

Certification Label A(认证标签)



FCC Notes Label(FCC标签)

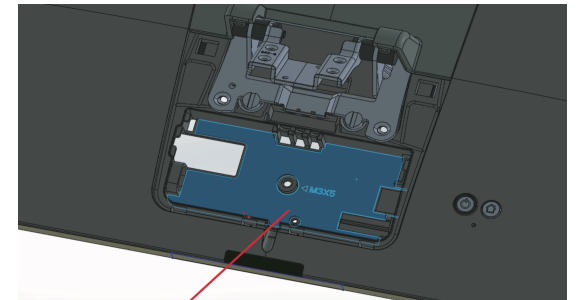


技术参数

尺寸:85.2*43.46mm

材质:0.075mm厚黑色PC(DFR116ECOB), 表面纹理:SPI-C2
背胶:3M-467, 厚度0.05mm

粘贴位置



Connectors Label(连接器标签)