

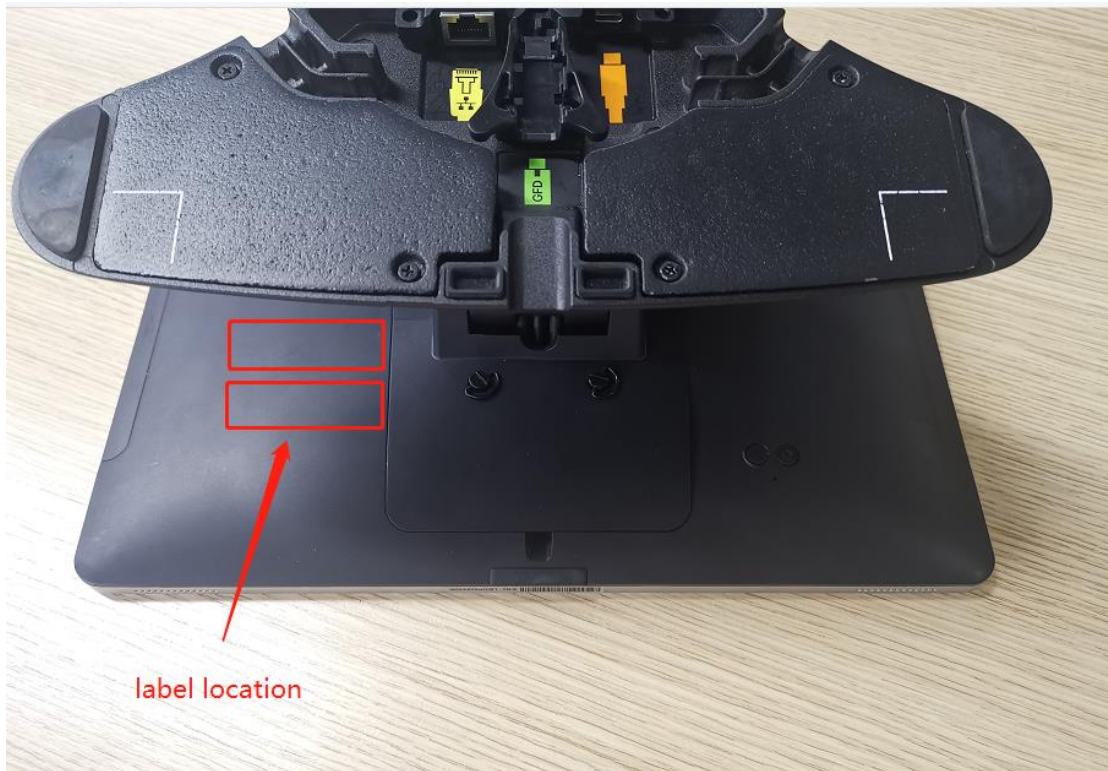
TK200, TT203, TT204:



TT202W, TT203W, TT204W:



Label location:



TK200, TT203, TT204:

This device complies with part 15 of the FCC Rules. Operation is subject to the following two conditions: (1) This device may not cause harmful interference, and (2) this device must accept any interference received, including interference that may cause undesired operation.

TT202W, TT203W, TT204W:

This device complies with part 15 of the FCC Rules. Operation is subject to the following two conditions: (1) This device may not cause harmful interference, and (2) this device must accept any interference received, including interference that may cause undesired operation.




TT204:

**toast**

**Toast, Inc.**  
Address: 401 Park Drive,  
Suite 801. Boston, MA 02215.  
FCC ID: 2AMNG-TT200B  
IC: 23177-TT200B  
Input: 24V  $\equiv$  1.5A

Made in China

Model Number: TT204  
S/No.:XXXXXXXXXXXXXXXXXX

This device complies with part 15 of the FCC Rules. Operation is subject to the following two conditions: (1) This device may not cause harmful interference, and (2) this device must accept any interference received, including interference that may cause undesired operation.

TT204W:




**Toast, Inc.**

Address: 401 Park Drive,  
Suite 801. Boston, MA 02215.

Model Number: TT204W

FCC ID: 2AMNG-TT200B

IC: 23177-TT200B

Input: 24V  1.5 A

Made in China

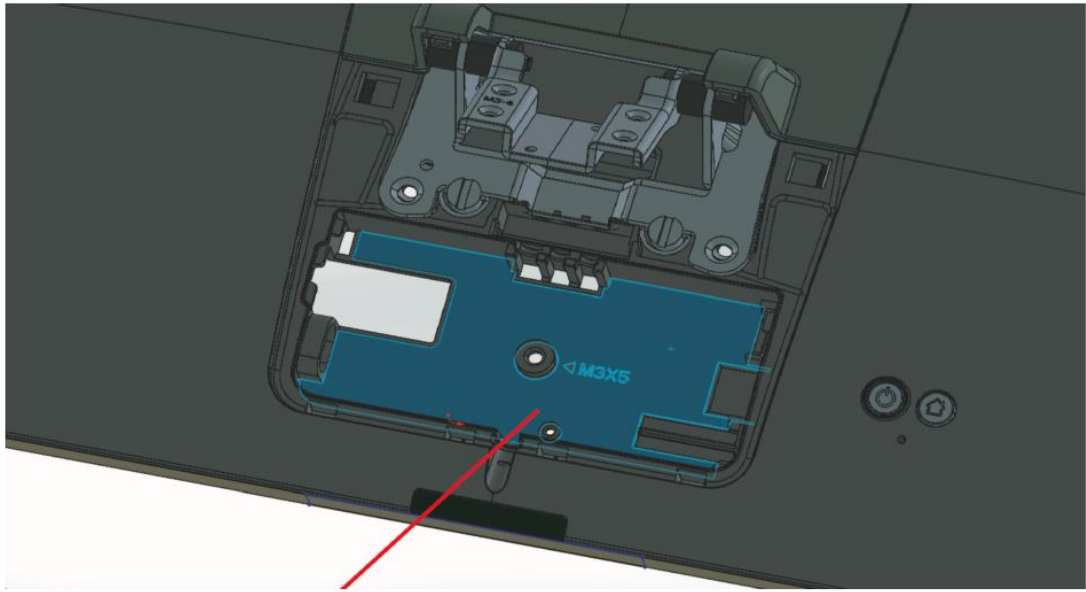
S/No:XXXXXXXXXXXXXX  




This device complies with part 15 of the FCC Rules. Operation is subject to the following two conditions: (1) This device may not cause harmful interference, and (2) this device must accept any interference received, including interference that may cause undesired operation.

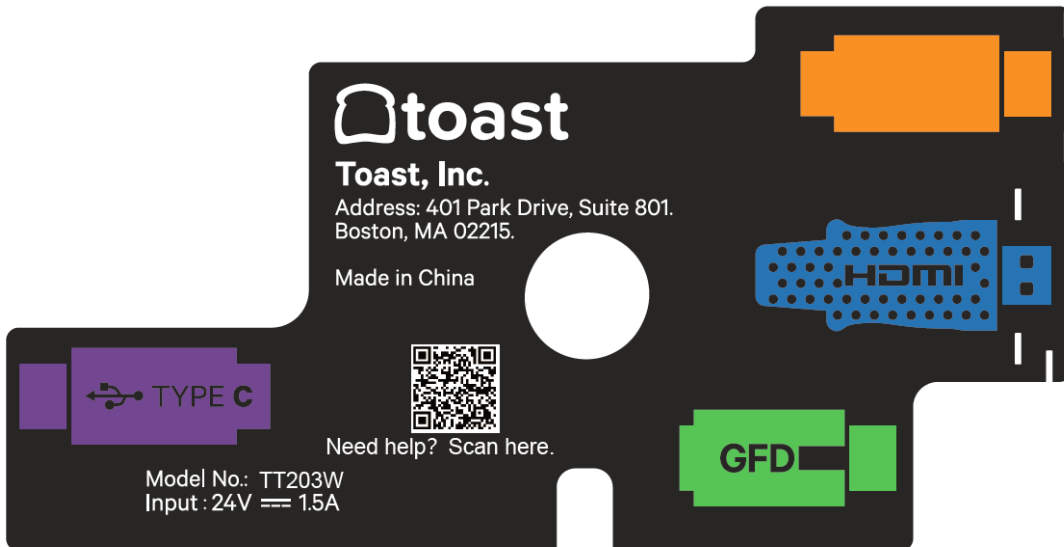
Label location:





Connectors Label(连接器标签)





**toast**  
**Toast, Inc.**  
Address: 401 Park Drive, Suite 801.  
Boston, MA 02215.  
Made in China

TYPE C

Need help? Scan here.

Model No.: TT204W  
Input: 24V  $\equiv$  1.5A

HDMI

GFD

**toast**  
**Toast, Inc.**  
Address: 401 Park Drive, Suite 801.  
Boston, MA 02215.  
Made in China

TYPE C

Need help? Scan here.

Model No.: TK200  
Input: 24V  $\equiv$  1.5A

HDMI

GFD