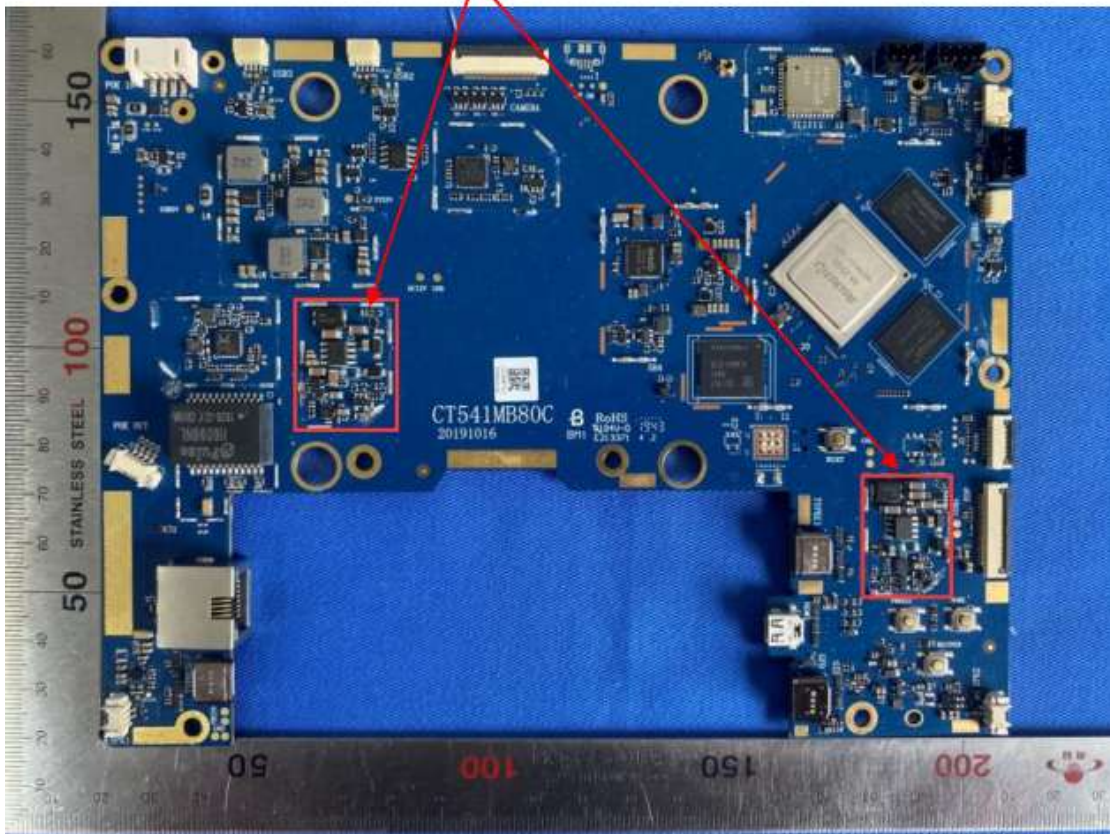


Internal photos

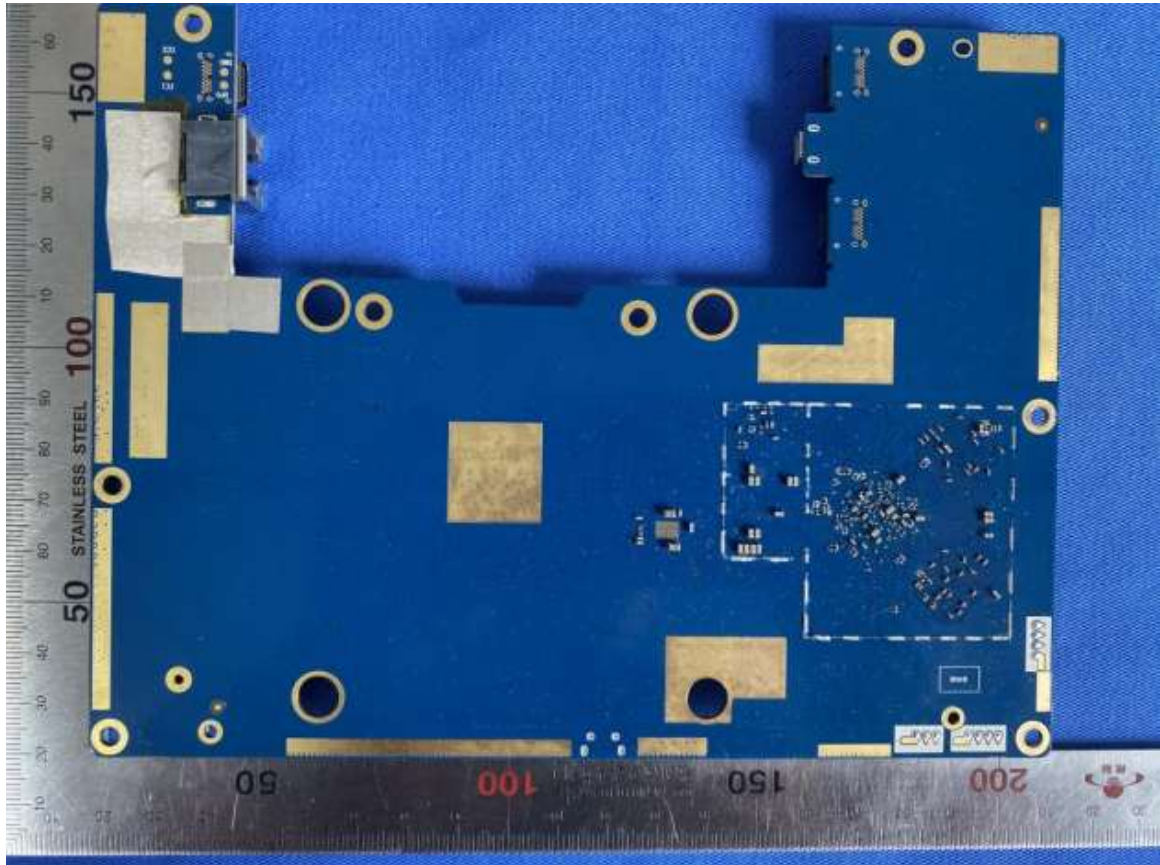
Internal (Main LCD panel) ---add Speaker



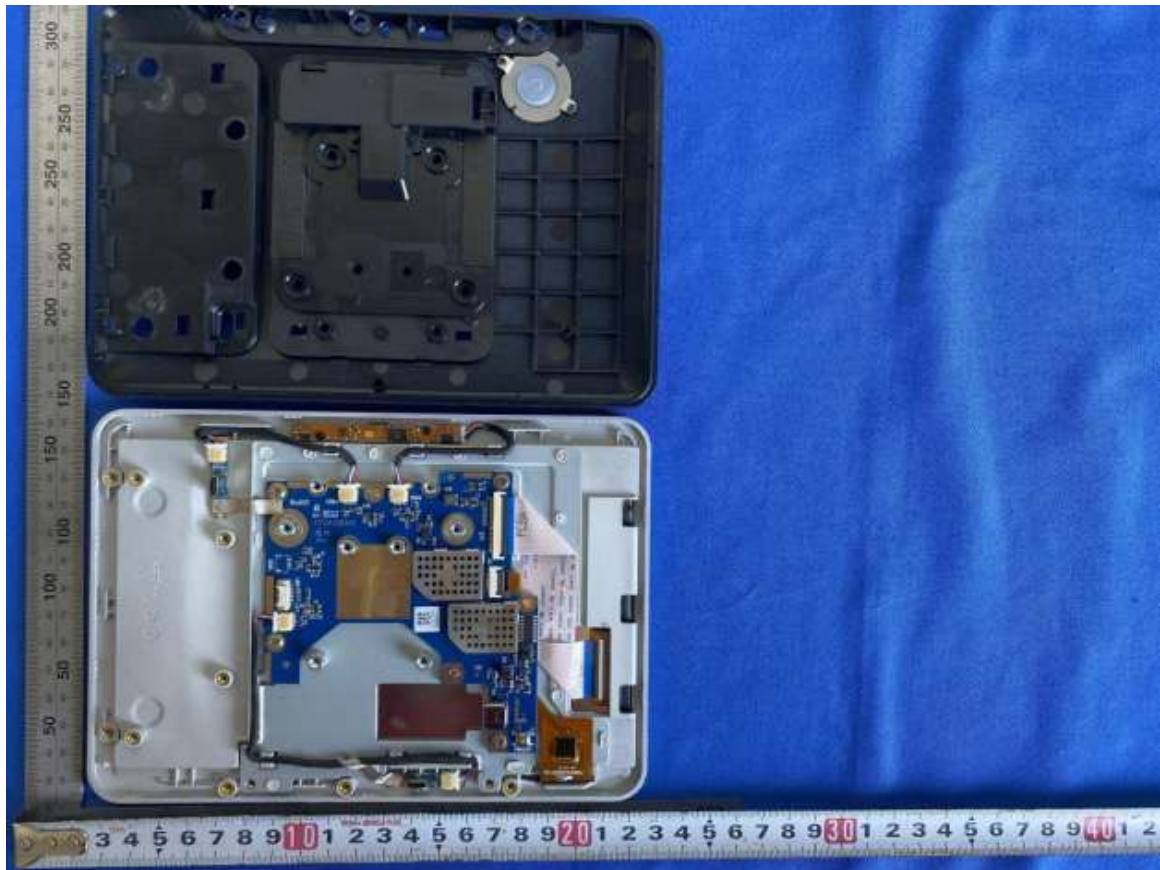
Main board face (Main LCD panel Terminal)
--- change MOSFET, Resistance, capacitor



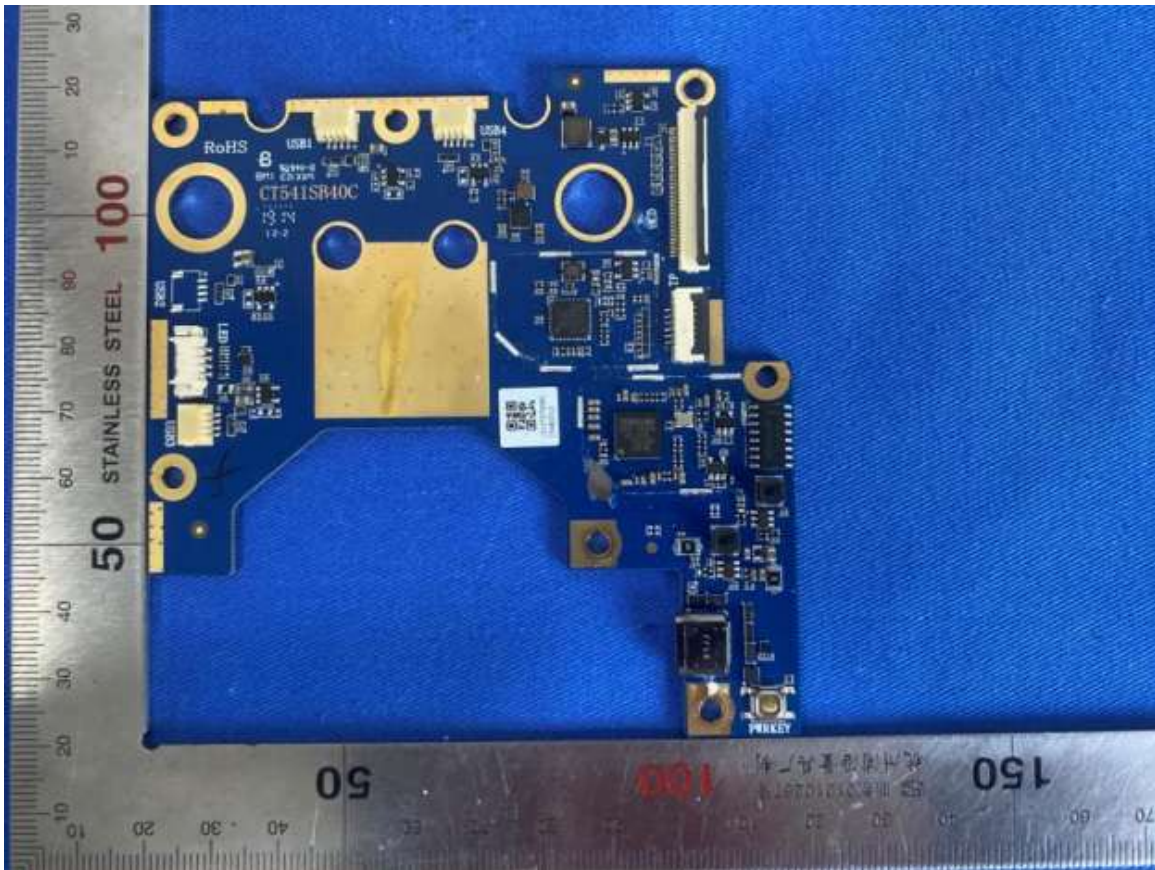
Main board Back (Main LCD panel Terminal)



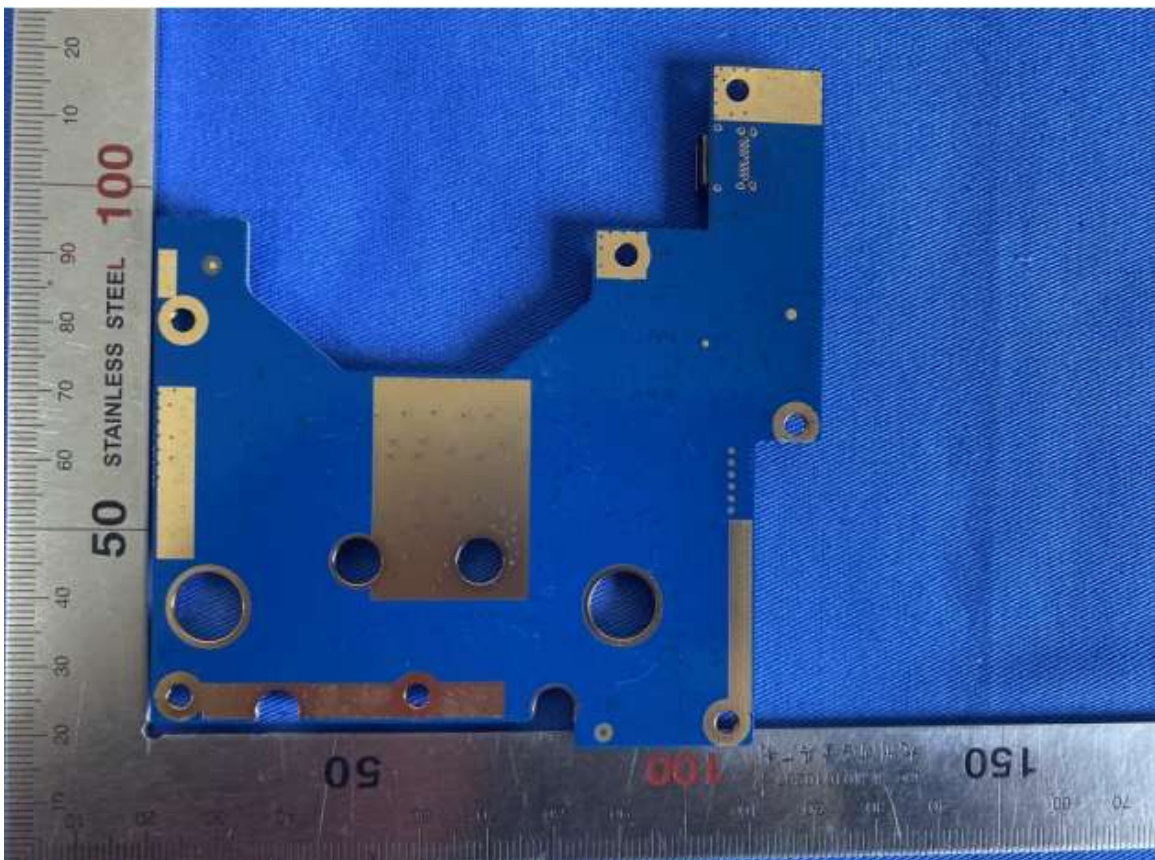
Internal1 (Sub LCD panel Terminal)----change LCD panel

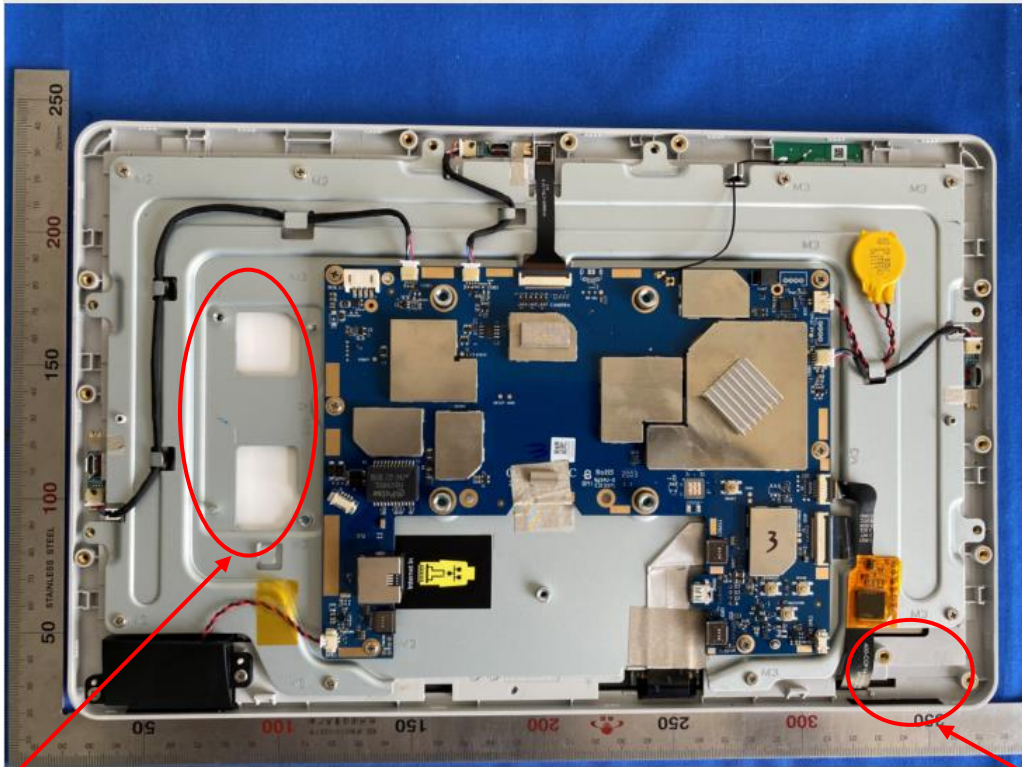


Internal2 (Sub LCD panel Terminal)



Internal3 (Sub LCD panel Terminal)

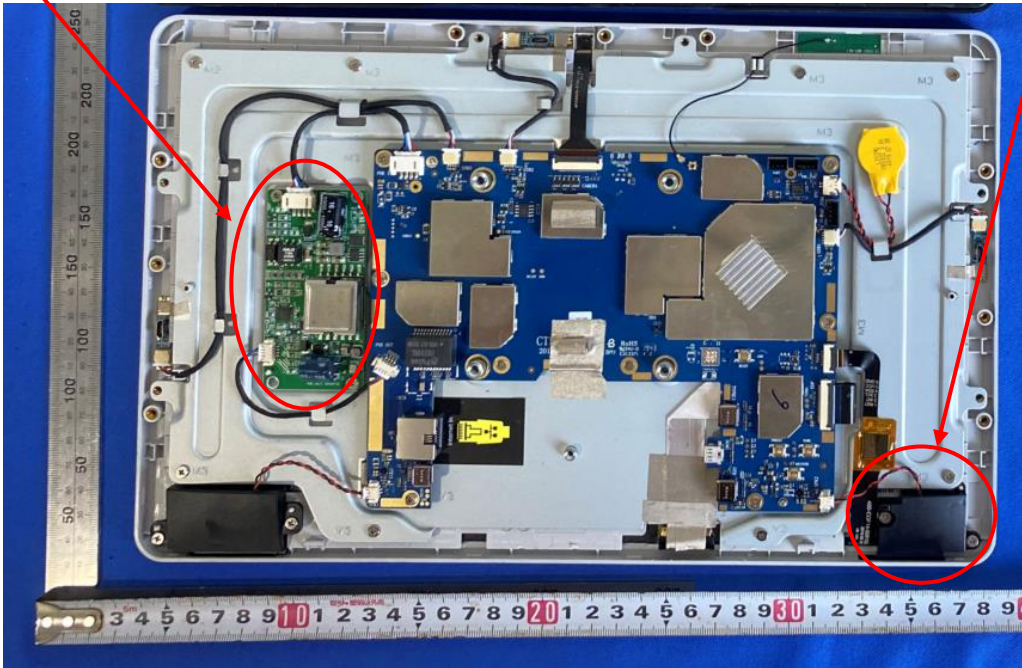




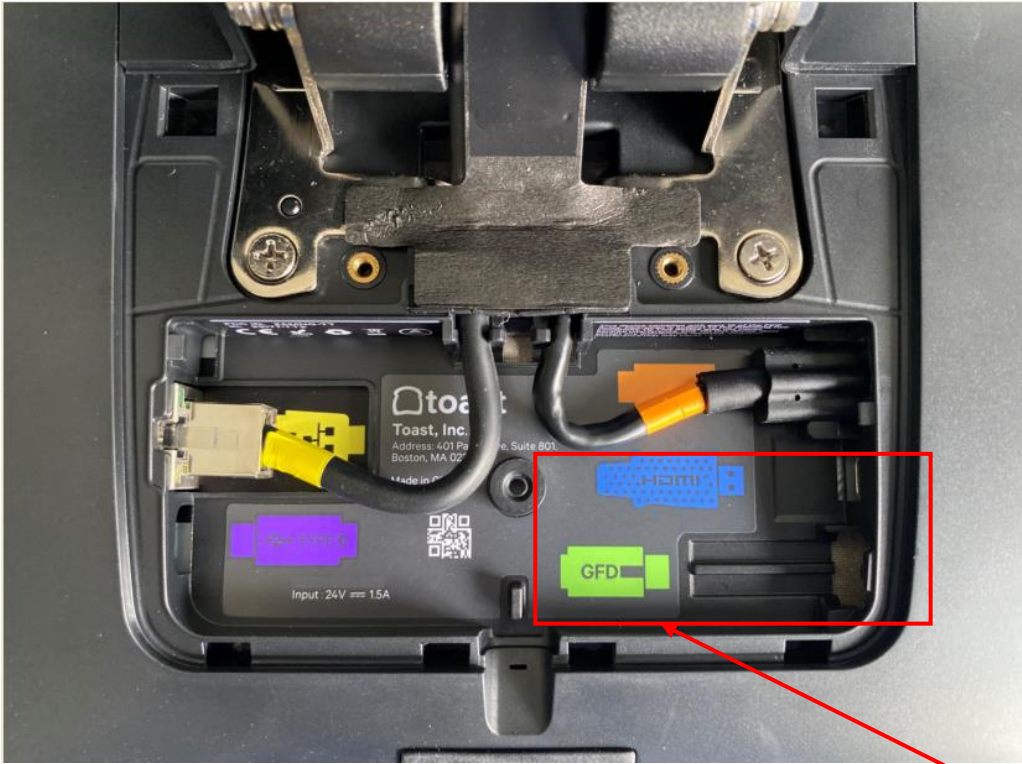
Remove POE module

Remove one speaker

TT201 / TT200 / TK200 Main LCD panel Internal on the original model



TT203 Main LCD panel back



Remove Y cable

TT204 / TT202 Main LCD panel back

