

ALPENA

CYBERGLOWZ™

PART #: 78192

⚠ WARNING: THE FAILURE TO FOLLOW THESE INSTRUCTIONS WHEN INSTALLING THE CYBERGLOWZ MAY CAUSE ELECTRIC PROBLEMS IN YOUR VEHICLE WHICH COULD CAUSE VEHICLE DAMAGE, ELECTRICAL SYSTEM DAMAGE, FIRE, ELECTRICAL SHOCK, PERSONAL INJURY OR DEATH.

⚠ WARNING: DO NOT LOOK DIRECTLY INTO THE CYBERGLOWZ. DO NOT DRIVE OR POSITION YOUR VEHICLE NEAR ON ROAD TRAFFIC WHEN THE CYBERGLOWZ IS POWERED ON – DOING SO MAY RESULT IN VISION IMPAIRMENT AND OR VEHICULAR COLLISION. THE INTENDED USE OF THE CYBERGLOWZ IS TO PROVIDE INTERIOR MOOD LIGHTING FOR USE OFF ROAD OR WHILE THE VEHICLE IS PARKED AND STATIONARY. THIS PRODUCT IS NOT DOT APPROVED.

INSTALLATION GUIDELINE

⚠ WARNING: SAFETY GLASSES MUST BE USED WHEN INSTALLING THIS PRODUCT.

CyberGlowz is an interior auxiliary light designed to provide mood lighting while driving off road or while the vehicle is parked and stationary. CyberGlowz has a distinct amperage draw noted in the installation instructions. If you are not confident in your ability to install the CyberGlowz please consult a licensed mechanic.

CyberGlowz has specific voltage and amperage ratings for power input and amperage draw. ENSURE THESE RATINGS ARE FOLLOWED. The CyberGlowz must be installed in a properly functioning electrical system. Do not install this product in a malfunctioning electrical system.

Test fit to ensure that the body of the light will stay wedged in place and will not damage trim or interior panels or come loose. Ensure wiring is long enough to be safely installed and does not obstruct any operating functions of the vehicle. These lights should not be installed where their operation hinders the visibility of the driver or other drivers.

⚠ WARNING: DURING OPERATION LIGHTING UNITS CAN GET HOT - DO NOT TOUCH WHILE OPERATIONAL OR WITHIN 30 MINUTES OF POWERING DOWN.

Before disconnecting battery terminals, please check your owner's manual for proper procedure

Federal Communications Commission (FCC) Interference Statement

This equipment has been tested and found to comply with the limits for a Class B digital device, pursuant to Part 15 of the FCC Rules.

These limits are designed to provide reasonable protection against harmful interference in a residential installation. This equipment generates, uses and can radiate radio frequency energy and, if not installed and used in accordance with the instructions, may cause harmful interference to radio communications.

There is no guarantee that interference will not occur in a particular installation. If this equipment does cause harmful interference to radio or television reception, which can be determined by turning the equipment off and on, the user is encouraged to try to correct the interference by one of the following measures:

- Reorient or relocate the receiving antenna
- Increase the separation between the equipment and receiver
- Connect the equipment into an outlet on a circuit different from that to which the receiver is connected
- Consult the dealer or an experienced radio/TV technician for help

This device complies with Part 15 of the FCC Rules. Operation is subject to the following two conditions:

- (1) This device may not cause harmful interference, and (2) this device must accept any interference received, including interference that may cause undesired operation.

FCC Caution: Any changes or modifications not expressly approved by the party responsible for compliance could void the user's authority to operate this equipment.

RF exposure warning

This equipment complies with FCC radiation exposure limits set forth for an uncontrolled environment. The equipment must not be co-located or operating in conjunction with any other antenna or transmitter.

ALPENA® LIMITED WARRANTY

This Limited Warranty covers defects in materials or workmanship of this product for one (1) year from the date of purchase. Normal wear and tear over time are not product defects. Product problems caused by not following the product instructions, abuse, misuse, alteration, accident and/or use beyond the product's intended purpose are not covered. This warranty is valid for the original owner and is not transferable. Proof of purchase is required.

Any implied warranties and conditions, such as merchantability and fitness for a particular purpose are hereby excluded, or if not excludable under law, are limited to one (1) year period. Some jurisdictions do not allow limitations on how long an implied warranty lasts, so this limitation may not apply to you

NO INCIDENTAL, CONSEQUENTIAL OR SPECIAL DAMAGES ARE RECOVERABLE. SOME JURISDICTIONS DO NOT ALLOW THE EXCLUSION OF INCIDENTAL, CONSEQUENTIAL OR SPECIAL DAMAGES, SO THE ABOVE LIMITATION OR EXCLUSION MAY NOT APPLY TO YOU. THIS WARRANTY GIVES YOU SPECIFIC LEGAL RIGHTS AND YOU MAY HAVE OTHER RIGHTS WHICH VARY DEPENDING ON THE JURISDICTION.

We will replace any product we determine to be defective provided you follow our product return directions. Please note that replacement product may not be exact due to style changes to our products. We will cover the mailing expense to send you a replacement product. However, mailing costs to return to us the original product which is claimed to be defective must be paid by you. If a replacement product is not available at the time you submit your warranty request, we will issue a credit.

For warranty service, please see below.

WE CAN HELP
Installation support available



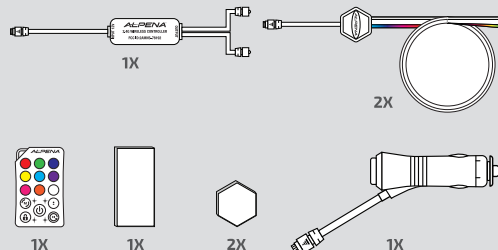
@AlpenaAutomotive
#AlpenaAutomotive
1-800-387-3217

GET STARTED

⚠ WARNING



BE SURE TO USE SAFETY GLASSES AT ALL TIMES WHEN INSTALLING THIS PRODUCT.



PACKAGE CONTENTS

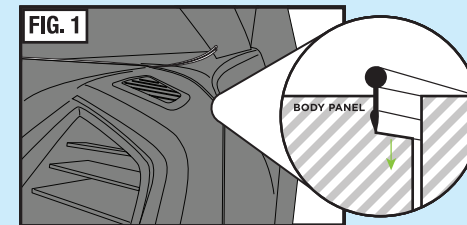
1. ASSEMBLY

Remove the unit from packaging, including all mounting hardware and wiring

2. MOUNTING

Select a mounting location that will not obstruct the operation of instruments or any vehicle functions, and will safely hold the body of the CyberGlowz strip in place. Clean mounting surfaces with isopropyl alcohol (70%) and wait for the surface to dry before proceeding.

- 1) IDENTIFY AN EDGE OR GAP BETWEEN PANELS THAT WILL SAFELY CONTAIN THE WEDGE AREA OF THE STRIP WITHOUT COMPROMISING INTERIOR CONSTRUCTION OR FUNCTION (FIG. 1). **NOTE: A TRIM TOOL MAY BE NECESSARY (NOT INCLUDED).**

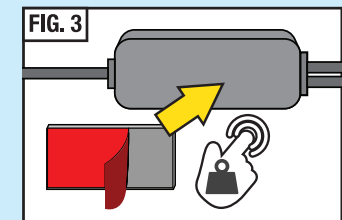
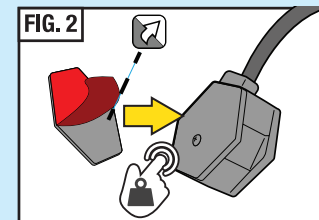


- 2) LOCATE THE TWO HEX SHAPED 3M ADHESIVE PADS FOR THE LED MODULE ON THE END OF EACH TRANSPARENT STRIP.

- 3) PEEL THE RED BACKING FROM THE HEX ADHESIVE PAD AND STICK IT FIRMLY ON THE FLAT SIDE OF THE LED UNITS. (FIG. 2)

- 4) LOCATE THE RECTANGULAR STRIP OF 3M ADHESIVE FOR THE WIRELESS CONTROL MODULE.

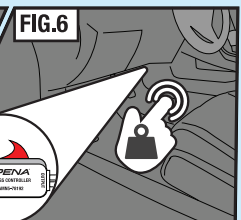
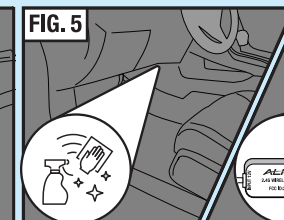
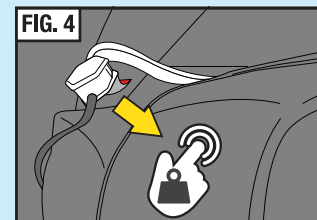
- 5) PEEL THE RED BACKING FROM THE RECTANGULAR ADHESIVE PAD AND STICK IT FIRMLY ON THE FLAT SIDE OF THE WIRELESS CONTROL BOX. (FIG. 3)



- 6) PEEL THE RED BACKING FROM THE ADHESIVE PADS AND PRESS THE LED UNITS FIRMLY ON TO THE MOUNTING LOCATION OR SURFACE. (FIG. 4)

- 7) LOCATE A SECURE AND DRY PLACE FOR THE CONTROL BOX THAT SAFELY ROUTES WIRING (ENSURING ALL WIRING DOES NOT INTERFERE WITH VEHICLE FUNCTIONS) AND CLEAN THE SURFACE. (FIG. 5)

- 8) PEEL THE RED BACKING FROM THE ADHESIVE PAD AND PRESS THE WIRELESS CONTROL MODULE FIRMLY ON TO THE MOUNTING LOCATION OR SURFACE. (FIG. 6)



3. WIRING

The AlpenaLink™ power adapter can be used on any 12V DC power outlet or cigarette lighter socket – ensure the outlet is properly functioning before installing or using this adapter

- 1) Plug the power adapter into the desired power socket, making sure the red button is not pressed down in 'ON' position.
- 2) Carefully plug the female AlpenaLink™ connector on the end of the adapter into the male AlpenaLink™ connector on the wireless control hub marked 'Input 12V' – extensions may be used between the power adapter and the wireless control module.
- 3) Connect either a single or both CyberGlowz strips to an output plug on the wireless control module, taking care to secure the clips without damage to the pins.
- 4) Check to make sure all AlpenaLink™ connections are secure
- 5) Power the kit on by pressing down on the red button on the power adapter and then pressing the power button on the remote

4. OPERATION

Test operation by powering on the device – either by reconnecting the power source or activating power using a switch (depends on installation)

REMOTE BATTERY – CR2032 (ONLY REPLACE THE BATTERY IN THE REMOTE WITH THE EXACT MODEL SPECIFIED)

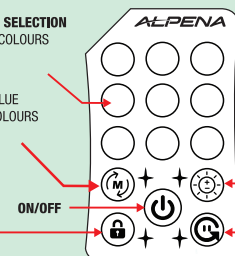
PAIR FUNCTION (FOR NEW OR EXTRA REMOTES)

ADD AND SYNC REMOTE
1) PRESS THE 'PAIR' BUTTON FOR 5 SECONDS. ALL LEDS WILL TURN BRIGHT GREEN TO INDICATE THE REMOTE IS SUCCESSFULLY PAIRED TO THIS KIT - ONLY THIS REMOTE WILL OPERATE THE KIT NOW

CANCEL PAIRED REMOTE:
1) PRESS THE 'PAIR' BUTTON FOR 3 SECONDS, THEN ALL LEDS WILL TURN BRIGHT RED AND INDICATE ANY REMOTE CAN NOW BE USED TO OPERATE THE KIT.

COLOUR SELECTION PRESET COLOURS

COLOUR MODE CHANGE
1) STROBE RED, GREEN & BLUE
2) FADE TRANSITION ALL COLOURS
3) 'SMOOTH' STROBE
4) 'OCEAN' FADE
5) 'SUN' FADE
6) 'SPORT' FLASHING



BRIGHTNESS LEVEL BRIGHT TO DIM 100% -> 75% -> 40%

COLOUR STREAM
PRESS TO CYCLE THROUGH COLOURS THEN PRESS BUTTON AGAIN TO PAUSE ON A COLOR

This device complies with Part 15 of the FCC Rules. Operation is subject to the following two conditions: (1) this device may not cause harmful interference, and (2) this device must accept any interference received, including interference that may cause undesired operation

NOTE: This equipment has been tested and found to comply with the limits for a Class B digital device, pursuant to Part 15 of the FCC Rules. These limits are designed to provide reasonable protection against harmful interference in a residential installation. This equipment generates, uses and can radiate radio frequency energy and, if not installed and used in accordance with the instructions, may cause harmful interference to radio communications. However, there is no guarantee that

interference will not occur in a particular installation.

If this equipment does cause harmful interference to radio or television reception, which can be determined by turning the equipment off and on, the user is encouraged to try to correct the interference by one or more of the following measures:

- Reorient or relocate the receiving antenna.
- Increase the separation between the equipment and receiver.
- Connect the equipment into an outlet on a circuit different from that to which the receiver is connected.
- Consult the dealer or an experienced radio/TV technician for help.

Warning: changes or modifications not expressly approved by the party responsible for compliance could void the user's authority to operate the equipment

The device has been evaluated to meet general RF exposure requirements, the device can be used in portable exposure conditions without restriction