



LED InteriorView

PART #: 78099

WARNING: THE FAILURE TO FOLLOW THESE INSTRUCTIONS WHEN INSTALLING THE LED INTERIORVIEW MAY CAUSE ELECTRIC PROBLEMS IN YOUR VEHICLE WHICH COULD CAUSE VEHICLE DAMAGE, ELECTRICAL SYSTEM DAMAGE, FIRE, ELECTRICAL SHOCK, PERSONAL INJURY OR DEATH.

WARNING: DO NOT LOOK DIRECTLY INTO THE LED INTERIORVIEW. DO NOT DRIVE OR POSITION YOUR VEHICLE NEAR ONCOMING TRAFFIC WHEN THE LED INTERIORVIEW IS POWERED ON – DOING SO MAY RESULT IN VISION IMPAIRMENT AND OR VEHICULAR COLLISION. THE INTENDED USE OF THE LED INTERIORVIEW IS TO PROVIDE INTERIOR AUXILIARY AND MOOD LIGHTING FOR USE WHILE STATIONARY AND OR PARKED.

INSTALLATION GUIDELINE

WARNING: SAFETY GLASSES MUST BE USED WHEN INSTALLING THIS PRODUCT.

LED InteriorView is an auxiliary / mood light designed to provide interior auxiliary and accent lighting while stationary and parked. LED InteriorView has a distinct amperage draw below in the installation instructions. If you are not confident in your ability to install the LED InteriorView please consult a licensed mechanic.

LED InteriorView has specific voltage and amperage ratings for power input and amperage draw. ENSURE THESE RATINGS ARE FOLLOWED. The LED InteriorView must be installed in a properly functioning vehicle electrical system. Do not install this product in a malfunctioning vehicle electrical system.

ALPENA® LIMITED WARRANTY

This Limited Warranty covers defects in materials or workmanship of this product for one (1) year from the date of purchase. Normal wear and tear over time are not product defects. Product problems caused by not following the product instructions, abuse, misuse, alteration, accident and/or use beyond the product's intended purpose are not covered. This warranty is valid for the original owner and is not transferable. Proof of purchase is required.

Any implied warranties and conditions, such as merchantability and fitness for a particular purpose are hereby excluded, or if not excludable under law, are limited to one (1) year period. Some jurisdictions do not allow limitations on how long an implied warranty lasts, so this limitation may not apply to you.

NO INCIDENTAL, CONSEQUENTIAL OR SPECIAL DAMAGES ARE RECOVERABLE. SOME JURISDICTIONS DO NOT ALLOW THE EXCLUSION OF INCIDENTAL, CONSEQUENTIAL OR SPECIAL DAMAGES, SO THE ABOVE LIMITATION OR EXCLUSION MAY NOT APPLY TO YOU. THIS WARRANTY GIVES YOU SPECIFIC LEGAL RIGHTS AND YOU MAY HAVE OTHER RIGHTS WHICH VARY DEPENDING ON THE JURISDICTION.

We will replace any product we determine to be defective provided you follow our product return directions. Please note that replacement product may not be exact due to style changes to our products. We will cover the mailing expense to send you a replacement product. However, mailing costs to return to us the original product which is claimed to be defective must be paid by you. If a replacement product is not available at the time you submit your warranty request, we will issue a credit.

For warranty service, please see below.

Problems? We can solve them!
1-800-387-3217
feedback@alpena.ca
www.alpena.ca



1. MOUNTING

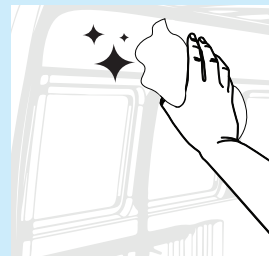
Select a mounting location that will not obstruct the operation of the driver

Clean mounting surfaces before installing units using water or a 50/50 mix of water and rubbing alcohol.

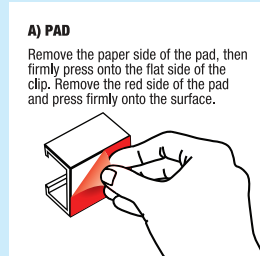
Before permanently mounting to vehicle, test fit to ensure wiring is long enough to be safely installed and does not obstruct any operating functions of the vehicle. These lights should not be installed where their operation hinders the visibility of the driver or other drivers

Test fit into intended location, ensuring all wiring will not obstruct any vehicle functions – **DO NOT EXPOSE EXTREME HEAT OR MOISTURE**

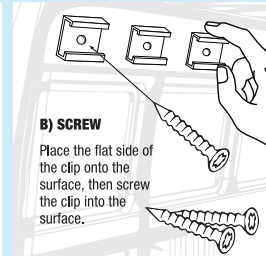
For best results, temperature at installation should be between 65-90 degrees Fahrenheit



1. Clean surface thoroughly with soap and water to remove any surface dirt, oils, or contaminants.

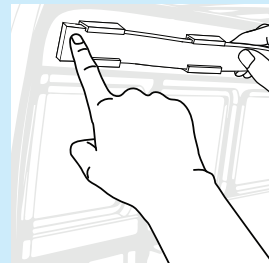


A) PAD
Remove the paper side of the pad, then firmly press onto the flat side of the clip. Remove the red side of the pad and press firmly onto the surface.

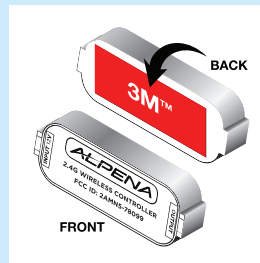


B) SCREW
Place the flat side of the clip onto the surface, then screw the clip into the surface.

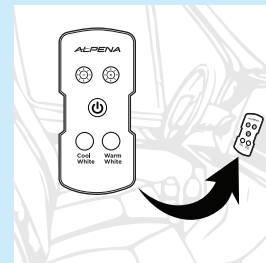
2. (A) Secure the clips using either the included 3M double sided pad and or the included **(B)** screws then place the clips along the mounting surface where the strip is intended to sit.



3. Slide the strip, LED side facing outwards, through the groove in the clip so that each clip suspends it in place



4. Once the clips are firmly in place, cut a piece of 3M™ and peel away the protective coating from the adhesive side, then press firmly onto the flat side of the white inline control module.

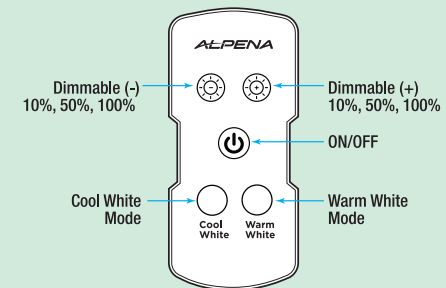


5. When the strip and module are secure, you may fasten the adhesive hook and loop strip to the back of the wireless remote and secure to the most convenient location. **DO NOT MOUNT WHERE REMOTE MAY IMPEDE ANY VEHICLE FUNCTIONS**

3. OPERATION

LED InteriorView can be operated with or without the vehicle running, depending on your power source. Follow the below diagram to operate the product with the included remote.

Over time the battery will fade and reduce the range of the remote. If you notice the remote range dropping or the remote functioning inconsistently, it may be time to replace the battery.
BATTERY TYPE: CR2032



Federal Communications Commission (FCC) Interference Statement

This equipment has been tested and found to comply with the limits for a Class B digital device, pursuant to Part 15 of the FCC Rules.

These limits are designed to provide reasonable protection against harmful interference in a residential installation. This equipment generates, uses and can radiate radio frequency energy and, if not installed and used in accordance with the instructions, may cause harmful interference to radio communications.

There is no guarantee that interference will not occur in a particular installation. If this equipment does cause harmful interference to radio or television reception, which can be determined by turning the equipment off and on, the user is encouraged to try to correct the interference by one of the following measures:

- Reorient or relocate the receiving antenna
- Increase the separation between the equipment and receiver
- Connect the equipment into an outlet on a circuit different from that to which the receiver is connected.
- Consult the dealer or an experienced radio/TV technician for help.

This device complies with Part 15 of the FCC Rules. Operation is subject to the following two conditions:

(1) This device may not cause harmful interference, and (2) this device must accept any interference received, including interference that may cause undesired operation.

FCC Caution: Any changes or modifications not expressly approved by the party responsible for compliance could void the user's authority to operate this equipment.

RF exposure warning

This equipment complies with FCC radiation exposure limits set forth for an uncontrolled environment. The equipment must not be co-located or operating in conjunction with any other antenna or transmitter.

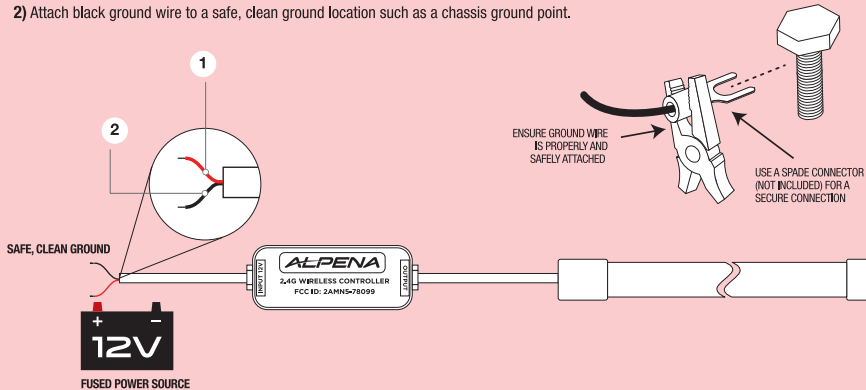
FCC ID No. 2AMN5-78099

2. WIRING

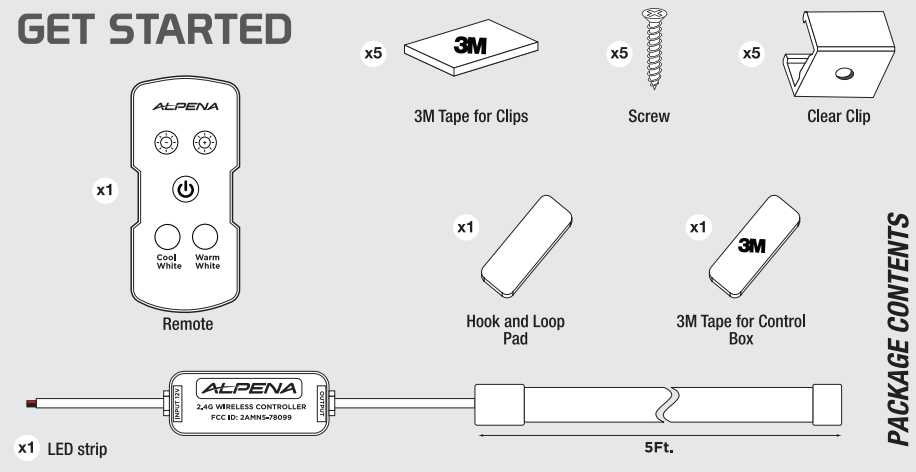
MAX POWER DRAW 1.25A @ 12V

1) Attach positive wire securely to a 12V DC fused power source. Extension of the wiring may be necessary. Can be wired into a switch that will support the 1.25Amp draw at 12V DC.

2) Attach black ground wire to a safe, clean ground location such as a chassis ground point.



GET STARTED



Problems? We can solve them!
1-800-387-3217 - feedback@alpena.ca