

PROSTROBE™

Summit 2™

PART #: 70706

WARNING: THE FAILURE TO FOLLOW THESE INSTRUCTIONS WHEN INSTALLING THE SUMMIT 2 MAY CAUSE ELECTRIC PROBLEMS IN YOUR VEHICLE WHICH COULD CAUSE VEHICLE DAMAGE, ELECTRICAL SYSTEM DAMAGE, FIRE, ELECTRICAL SHOCK, PERSONAL INJURY OR DEATH.

WARNING: DO NOT LOOK DIRECTLY INTO THE SUMMIT 2. DO NOT DRIVE YOUR VEHICLE WHEN THE SUMMIT 2 IS POWERED ON – DOING SO MAY RESULT IN VISION IMPAIRMENT AND OR VEHICULAR COLLISION. THE INTENDED USE OF THE SUMMIT 2 IS TO PROVIDE EXTERIOR STROBE LIGHTING FOR OFF ROAD USE WHILE STATIONARY. THIS PRODUCT IS NOT DOT APPROVED.

INSTALLATION GUIDELINE

WARNING: SAFETY GLASSES MUST BE USED WHEN INSTALLING THIS PRODUCT.

Summit 2 is an auxiliary strobe light designed to provide exterior auxiliary lighting. Summit 2 has a distinct amperage draw below in the installation instructions. If you are not confident in your ability to install the Summit 2 please consult a licensed mechanic.

Summit 2 has specific voltage and amperage ratings for power input and amperage draw. ENSURE THESE RATINGS ARE FOLLOWED. The Summit 2 must be installed in a properly functioning vehicle electrical system. Do not install this product in a malfunctioning vehicle electrical system.

Select a mounting location that will not obstruct the operation of any instruments or vehicle functions

Clean mounting surfaces before installing units using water or a 50/50 mix of water and rubbing alcohol.

Before permanently mounting to vehicle, test fit to ensure wiring is long enough to be safely installed and does not obstruct any operating functions of the vehicle. Ensure parking or airbag sensors are not altered, damaged and the product does not interfere with their function.

WARNING: DURING OPERATION LIGHTING UNITS CAN GET HOT - DO NOT TOUCH WHILE OPERATIONAL OR WITHIN 30 MINUTES OF POWERING DOWN.

Before disconnecting battery terminals, please check your owner's manual for proper procedure.

PROSTROBE® LIMITED WARRANTY

This Limited Warranty covers defects in materials or workmanship of this product for one (1) year from the date of purchase. Normal wear and tear over time are not product defects. Product problems caused by not following the product instructions, abuse, misuse, alteration, accident and/or use beyond the product's intended purpose are not covered. This warranty is valid for the original owner and is not transferable. Proof of purchase is required.

Any implied warranties and conditions, such as merchantability and fitness for a particular purpose are hereby excluded, or if not excludable under law, are limited to one (1) year period. Some jurisdictions do not allow limitations on how long an implied warranty lasts, so this limitation may not apply to you

NO INCIDENTAL, CONSEQUENTIAL OR SPECIAL DAMAGES ARE RECOVERABLE. SOME JURISDICTIONS DO NOT ALLOW THE EXCLUSION OF INCIDENTAL, CONSEQUENTIAL OR SPECIAL DAMAGES, SO THE ABOVE LIMITATION OR EXCLUSION MAY NOT APPLY TO YOU. THIS WARRANTY GIVES YOU SPECIFIC LEGAL RIGHTS AND YOU MAY HAVE OTHER RIGHTS WHICH VARY DEPENDING ON THE JURISDICTION.

We will replace any product we determine to be defective provided you follow our product return directions. Please note that replacement product may not be exact due to style changes to our products. We will cover the mailing expense to send you a replacement product. However, mailing costs to return to us the original product which is claimed to be defective must be paid by you. If a replacement product is not available at the time you submit your warranty request, we will issue a credit.

For warranty service, please see below.

Problems? We can solve them!
1-800-387-3217
feedback@prostrobe.ca
www.prostrobe.ca

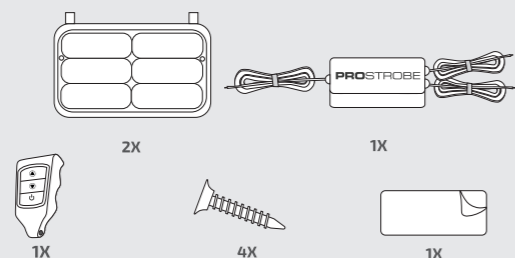


GET STARTED

WARNING



BE SURE TO USE SAFETY GLASSES AT ALL TIMES WHEN INSTALLING THIS PRODUCT.

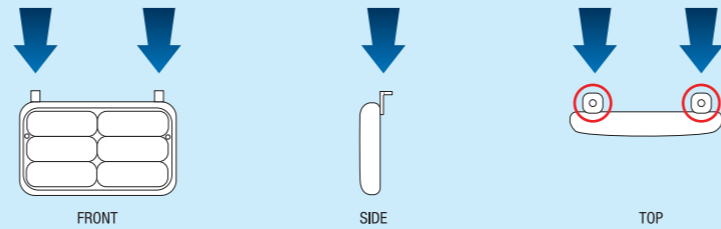


PACKAGE CONTENTS

1. MOUNTING

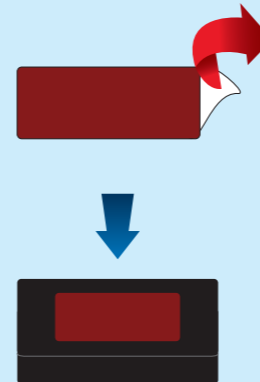
MOUNT THE UNIT TO THE DESIRED MOUNTING LOCATION. IT IS RECOMMENDED TO CLEAN THE SURFACE OF ALL CONTAMINANTS PRIOR TO DRILLING ANY HOLES OR MOUNTING.

- IF THE DESIRED SURFACE HAS ADEQUATE MOUNTING HOLES USE THE INCLUDED SCREWS TO SAFELY & SECURELY ATTACHE THE STROBE HEADS TO THE SURFACE
- IF THE SURFACE DOES NOT HAVE ADEQUATE MOUNTING HOLES DRILL A HOLE ON EACH SIDE OF THE SELECTED MOUNTING LOCATION USING THE OUTLINE OF THE MOUNTING BRACKET AS A TEMPLATE. IF NECESSARY DRILL A SMALL HOLE THAT CAN BE USED FOR PASSING WIRING THROUGH THE MOUNTING SURFACE IN ORDER TO WIRE THE UNIT.

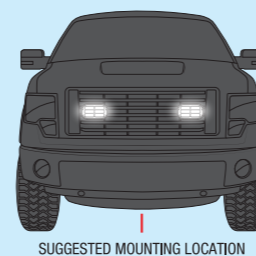


- MOUNT THE CONTROL BOX IN A SAFE, SECURE LOCATION WHERE IT DOES NOT OBSTRUCT ANY VEHICLE FUNCTIONS AND IS NOT EXPOSED TO EXTREME HEAT OR MOISTURE. SECURE THE BLACK WIRELESS CONTROL BOX USING THE INCLUDED ADHESIVE PAD:

- PEEL THE WHITE BACKING OFF THE ADHESIVE PAD, PRESS FIRMLY ON TO SMOOTH SIDE OF CONTROL BOX



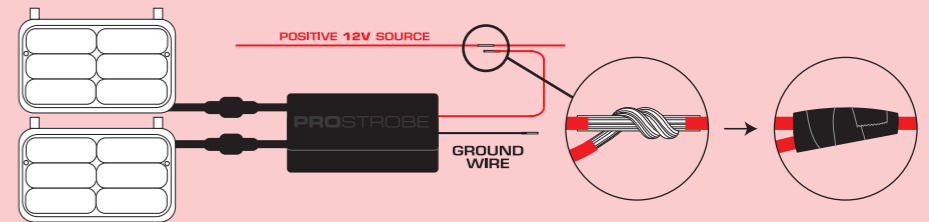
- PEEL THE RED BACKING OFF THE ADHESIVE PAD AND PRESS CONTROL BOX FIRMLY ON TO CLEAN, SECURE LOCATION



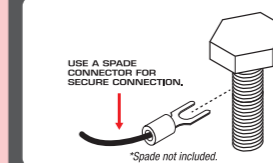
2. WIRING

ATTACH POSITIVE WIRE SECURELY TO A 12V DC POWER SOURCE. EXTENSION OF WIRING MAY BE NECESSARY. CAN BE WIRED INTO A POWER SOURCE THAT IS SWITCHED ON WITH THE IGNITION OR SUPPLIES A CONSTANT SOURCE OF POWER CAPABLE OF THE PRODUCT'S 1.15 AMP MAXIMUM POWER DRAW AT 12V DC.

ATTACH BLACK GROUND WIRE TO A SAFE, CLEAN GROUND LOCATION SUCH AS A CHASSIS GROUND POINT



ATTACH BLACK GROUND WIRE TO A SAFE, CLEAN GROUND LOCATION.



3. OPERATION

TEST OPERATION BY POWERING ON THE DEVICE – EITHER BY RECONNECTING THE POWER SOURCE, AND IF PREVIOUSLY DISCONNECTED, THE VEHICLE BATTERY.

SUMMIT 2 CAN BE OPERATED WITH OR WITHOUT THE VEHICLE RUNNING, DEPENDING ON YOUR POWER SOURCE. FOLLOW THE BELOW DIAGRAM TO OPERATE THE PRODUCT WITH THE INCLUDED REMOTE.

OVER TIME THE BATTERY WILL FADE AND REDUCE THE RANGE OF THE REMOTE. IF YOU NOTICE THE REMOTE RANGE DROPPING OR THE REMOTE FUNCTIONING INCONSISTENTLY, IT MAY BE TIME TO REPLACE THE BATTERY. BATTERY TYPE: CR2032 3V



- CHANGE PATTERN**
 - Cycle through patterns
- POWER BUTTON**
 - Turns the LEDs ON and OFF



Problems? We can solve them!
1-800-387-3217 - feedback@prostrobe.ca

Federal Communications Commission (FCC) Interference Statement

This equipment has been tested and found to comply with the limits for a Class B digital device, pursuant to Part 15 of the FCC Rules. These limits are designed to provide reasonable protection against harmful interference in a residential installation. This equipment generates, uses and can radiate radio frequency energy and, if not installed and used in accordance with the instructions, may cause harmful interference to radio communications.

There is no guarantee that interference will not occur in a particular installation. If this equipment does cause harmful interference to radio or television reception, which can be determined by turning the equipment off and on, the user is encouraged to try to correct the interference by one of the following measures:

- Reorient or relocate the receiving antenna
- Increase the separation between the equipment and receiver
- Connect the equipment into an outlet on a circuit different from that to which the receiver is connected.
- Consult the dealer or an experienced radio/TV technician for help.

This device complies with Part 15 of the FCC Rules. Operation is subject to the following two conditions:

(1) This device may not cause harmful interference, and (2) this device must accept any interference received, including interference that may cause undesired operation.

FCC caution: Any changes or modifications not expressly approved by the party responsible for compliance could void the user's authority to operate this equipment.

RF exposure warning

This equipment complies with FCC radiation exposure limits set forth for an uncontrolled environment. The equipment must not be co-located or operating in conjunction with any other antenna or transmitter.