

Make Your Miro Smart with miroT.

Google Home
SmartThings
Alexa



**Miro Smart Home &
miroT User Manual**

Thank you for purchasing miroT.

Please read the user manual
thoroughly before using miroT.

The manual information may change due to
the frequent firmware and interface updates.

Please carefully read, understand,
and follow all warnings and instructions.

The warranty information can be found in
this user manual.

Please keep this user manual for future use.

Table of contents

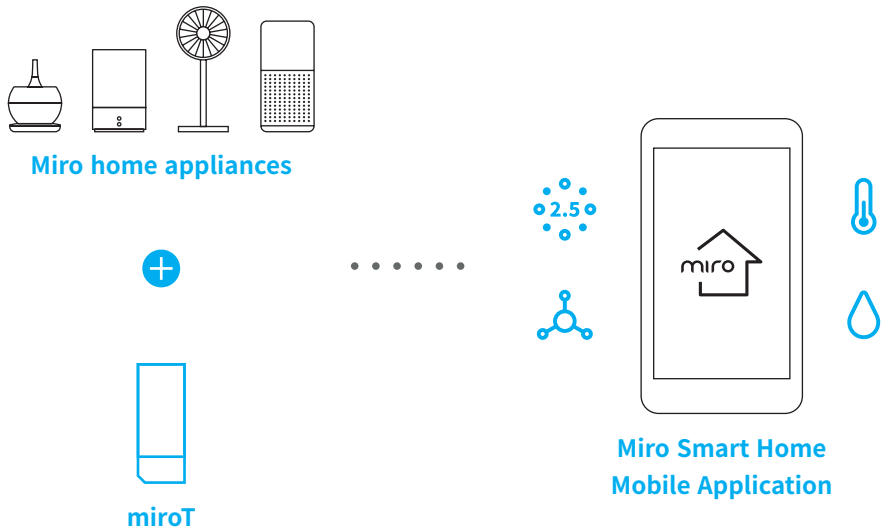
What is miroT?	4
Miro Smart Home Mobile App	6
Using miroT with your Google Assistant	13
Connecting miroT to Alexa	15

What is miroT?

Make your Miro home appliances into smart devices by connecting miroT.

Your environment, your control.

Check and change your environment using the Miro Smart Home Mobile Application. For example, you can tell your Miro Air Purifier to clear the air before you head back home.



Tip

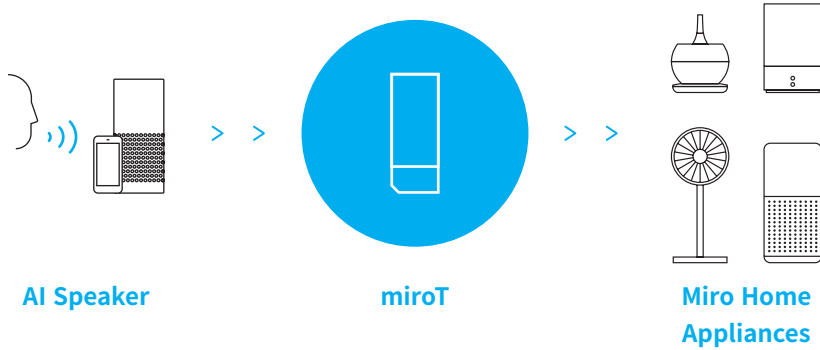
Certain Miro appliances may not be compatible with miroT.

Tip

Sensor availability may differ based on the model of the Miro appliance.

Speak to your appliances

miroT can be connected to various AI speakers. Easily control your appliances anywhere.



Tip

Your AI speaker may or may not be compatible with miroT.

Miro Smart Home Mobile App

A miroT is required to connect your home appliance to AI speakers or the Miro smart home app. You will need one miroT for each Miro appliance.

01. Installing the Miro Smart Home Mobile Application

Please visit Google Play Store (Android) or App Store (iOS) and search "Miro SmartHome."

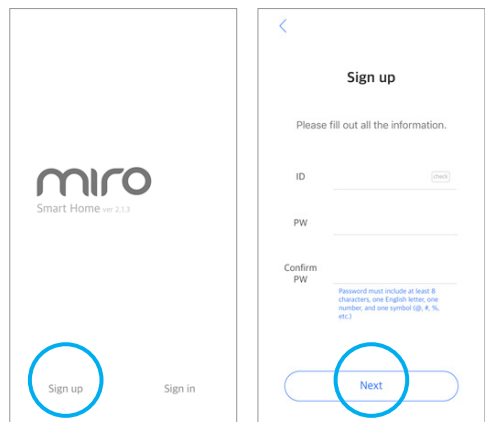


02. Registration

Please use the "sign up" button to start the registration process.

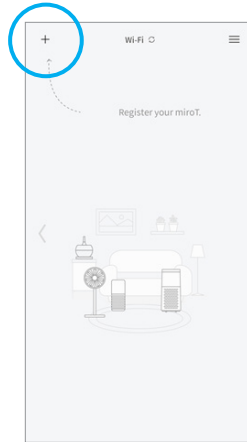
Tip

You will be automatically logged in after registration.



03. Connecting miroT 1-1

Press the + button on top left to connect your miroT for the first time.



03. Connecting miroT 1-2

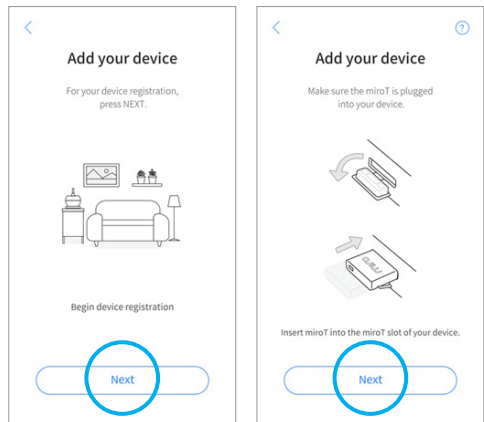
When you are in the "Add new device" section, go through the steps to register your miroT.

Tip

Each appliances will have different miroT slots. Make sure to check the appliance manual to see where the miroT slot is.

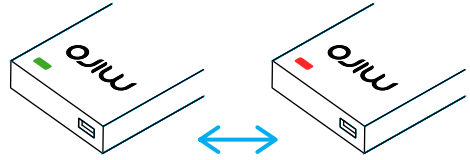
Tip

Press the help logo on top right to get additional tip/description.



04. miroT Connectivity

Please make sure that your miroT is blinking between green and red. This means that your miroT is ready to pair.



Tip

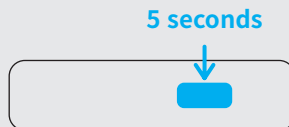
Please reset your miroT if the LED light is not blinking between green and red.

Tip

You can find more information on support.mirohome.com.

Resetting miroT

If your miroT is not blinking, please use a sharp object and press down the reset button for 5 seconds. This will start the reset process.

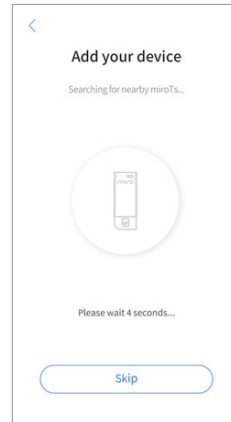


05. Automatically searching for your miroT

Miro Smart Home App will automatically search for your miroT. The app will go to the next step once your miroT is automatically detected.

Tip

If your miroT is not automatically detected, please go through the connection process manually.



miroT is not connecting automatically

Check your miroT version and go through the connection process manually.

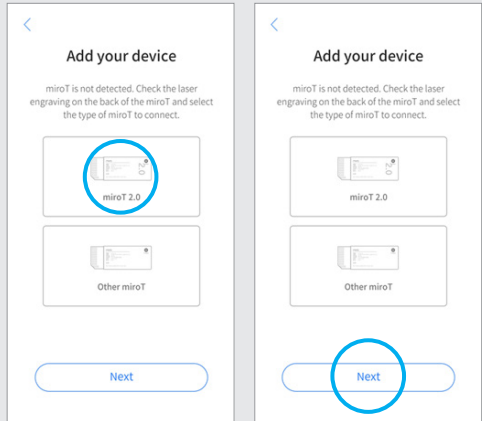
Using multiple miroTs

Go through the manual process to ensure that you are connecting the right miroT.

When 2nd generation miroT does not connect automatically

06 - 1. Searching manually

Select the 'miroT 2.0'
and press next.



06 - 2. miroT Wi-Fi

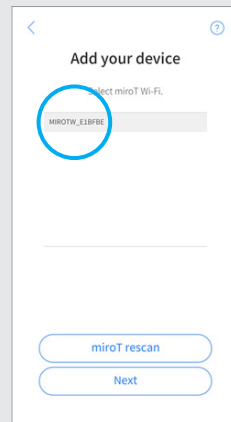
Check your miroT serial number,
and select the serial number
you would like to connect.

Tip

Once selected, your miroT LED light
will slowly turn green.

Tip

Other miroT(miroT 1.0) is only used
in South Korea.

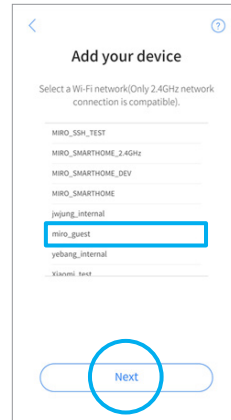


07. Choosing Wi-Fi Network

Select Wi-Fi network (SSID) you would like to connect.

Tip

miroT can only connect to 2.4 GHz Wi-Fi signal. It does not support 5.0 GHz Wi-Fi.



08. Password

Please type in your Wi-Fi network password. Press next.

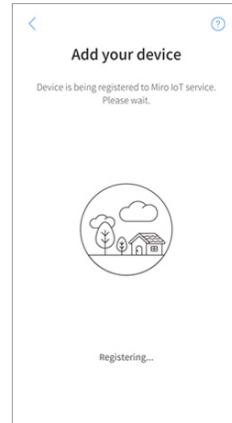
Tip

miroT connection process may be interrupted if your password input is incorrect. Please make sure to check your password before this step.



09. miroT connection process

Once your Wi-Fi is connected, miroT registration will automatically proceed. It will take about 5 to 20 seconds.



10. Choosing a name for your miroT

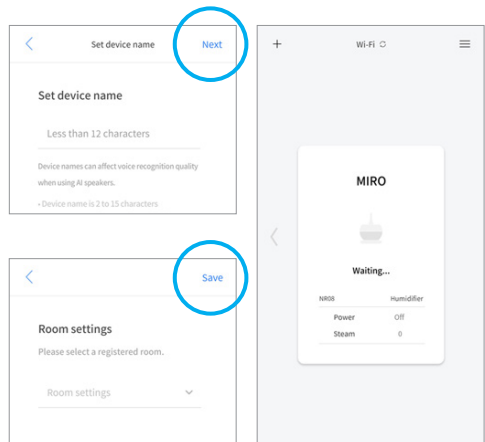
Next step will require you to name your miroT and choose the room that your appliance is located in. Go through the process and your registration will be completed.

Tip

Please restart your Miro Smart Home App if the registration gets stuck.

Tip

If you are having trouble using your miroT, please contact us via support. mirohome.com.



Using miroT with your Google Assistant



Google Assistant

Voice Commands

Classification	command
Power On/Off	Ok Google, turn on <name> Ok Google, turn off <name>
Mist Power Setting	Ok Google, set the fan speed of <name> to level 1 Ok Google, set the humidifier to max
Light Setting	Ok Google, turn on light of the <name> Ok Google, turn off light of the <name>
Group Controls	Ok Google, turn on all the humidifiers Ok Google, turn off all the humidifiers Ok Google, turn on the humidifiers in the <room name> Ok Google, turn on light of the humidifiers G, turn off light of the humidifiers
Status Check	Ok Google, is the <name> on? Ok Google, is the <name> off? Ok Google, What is the speed of <name>?
Automatic Mode On/Off	Ok Google, set mode of <name> to auto Ok Google, set mode of <name> to automatic Ok Google, set mode of <name> to manual

Tip

Please check our support website for future updates.

Connecting miroT to Alexa



Regulation Information

This equipment has been tested and found to comply with the limits for a Class B digital device, pursuant to part 15 of the FCC Rules. These limits are designed to provide reasonable protection against harmful interference in a residential installation. This equipment generates, uses and can radiate radio frequency energy and, if not installed and used in accordance with the instructions, may cause harmful interference to radio communications. However, there is no guarantee that interference will not occur in a particular installation. If this equipment does cause harmful interference to radio or television reception, which can be determined by turning the equipment off and on, the user is encouraged to try to correct the interference by one or more of the following measures:

- Reorient or relocate the receiving antenna
- Increase the separation between the equipment and receiver.
- Connect the equipment into an outlet on a circuit different from that to which the receiver is connected.
- Consult the dealer or an experienced radio/TV technician for help.

This device complies with Part 15 of the FCC Rules. Operation is subject to the following two conditions:

- (1) this device may not cause harmful interference, and
- (2) this device must accept any interference received, including interference that may cause undesired operation.

Caution:

Any changes or modifications to the equipment not expressly approved by the party responsible for compliance could void user's authority to operate the equipment. This appliance and its antenna must not be co-located or operation in conjunction with any other antenna or transmitter.

A minimum separation distance of 20 cm must be maintained between the antenna and the person for this appliance to satisfy the RF exposure requirement.

Alexa

Voice Commands

Classification	command
Power On/Off	Alexa, turn on <name> Alexa, turn off <name>
Mist Power Setting	Alexa, set the fan speed of <name> to low Alexa, set the wind speed of <name> to high Alexa, set the humidity level of <name> to max Alexa, set the humidity of <name> to minimum
Light Mode On/Off	Alexa, turn on light mode of <name> Alexa, turn off light mode of <name>
Light Color Change	Alexa, set the light color of <name> to blue Alexa, set the color of <name> to emerald green
Brightness	Alexa, set the brightness of <name> to brightest Alexa, set the light intensity of <name> to darkest
Mute/Unmute	Alexa, mute <name> Alexa, unmute <name>
Automatic Mode On/Off	Alexa, set the mode of <name> to manual Alexa, set the operation mode of <name> to auto Alexa, set the operation setting of <name> to automatic

Tip

Please check our support website for future updates.

miro

shop.mirohome.com