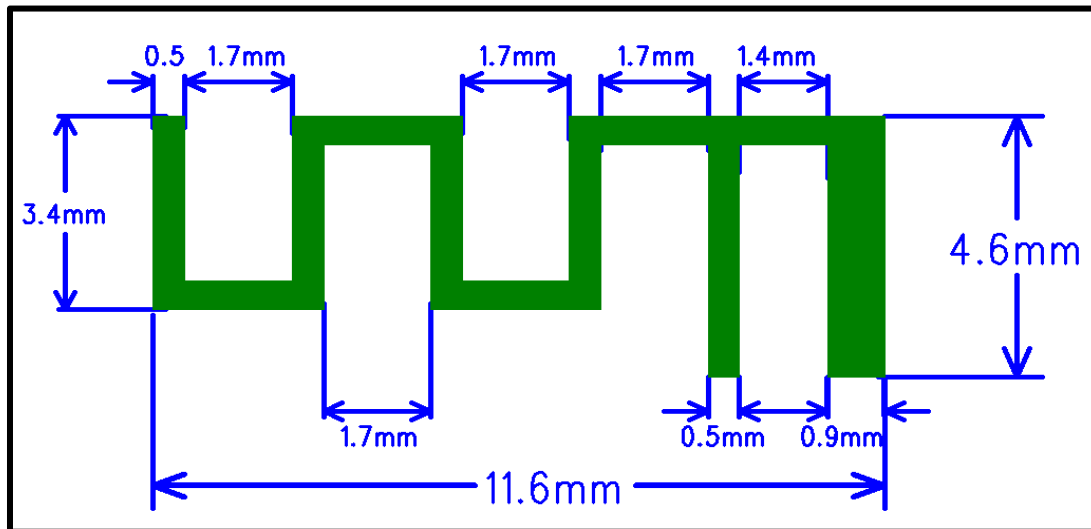


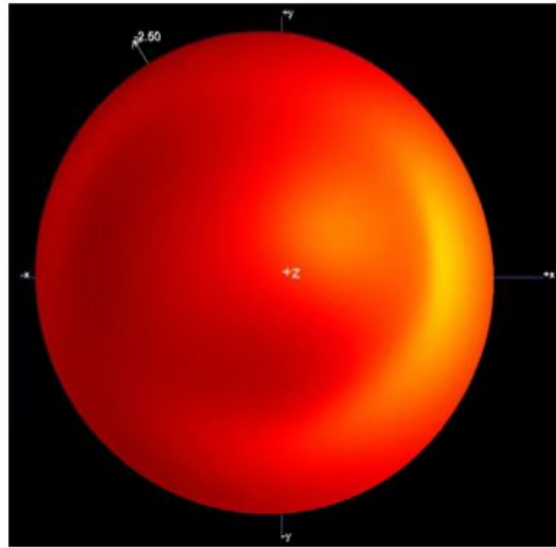
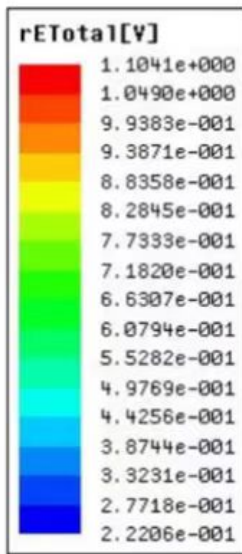
EWN-8258FAT1CC Antenna	
Frequency	2405MHz~2480MHz
Max.Gain	-1.99dBi@2405MHz~2480MHz
Efficiency	31%@2405MHz~2480MHz
Polarization	Linear
Impedance	50 Ohm
B.Material & Mechanical Characteristics	
Material of Radiator	PCB
Cable Type	
Connector Type	None
Pull Test	/
C.Environmental	
Operation Temperature	-40~105C°
Storage Temperature	-40~105C°

Antenna Dimension

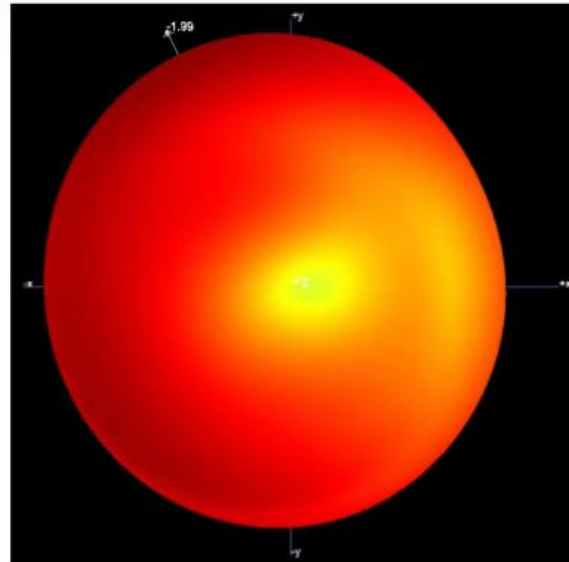
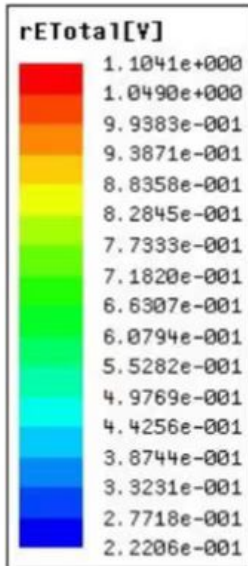


3D radiation pattern

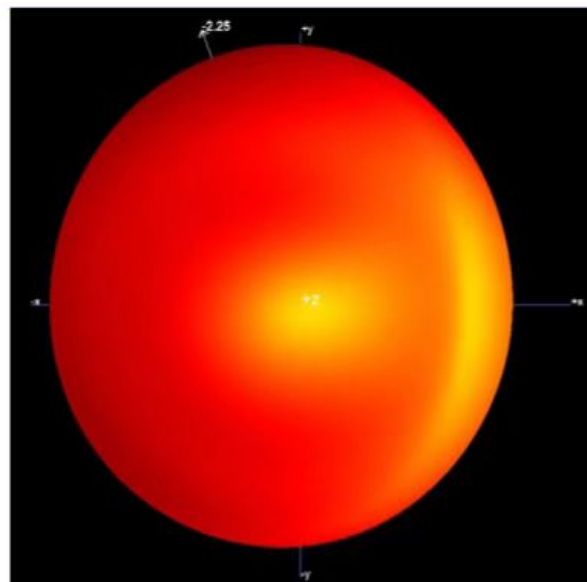
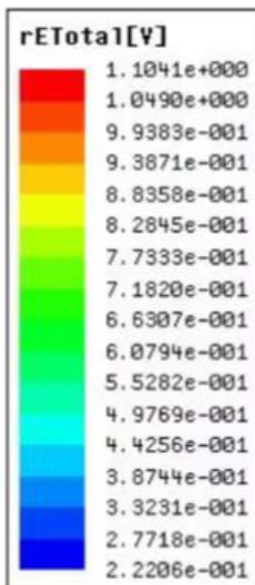
2405MHz



2440MHz

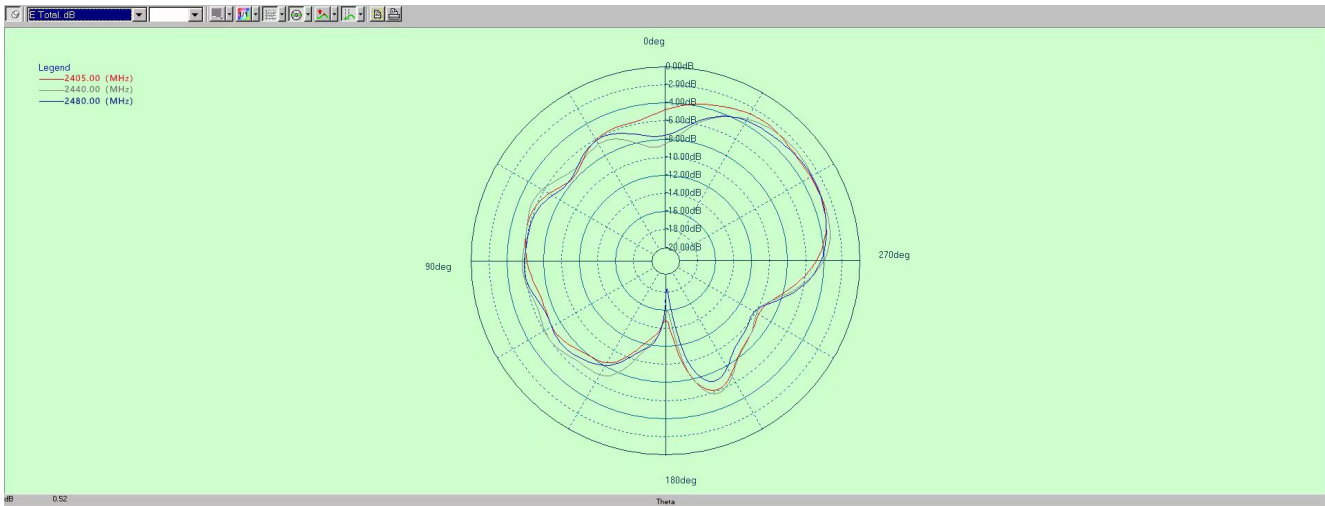


2480MHz

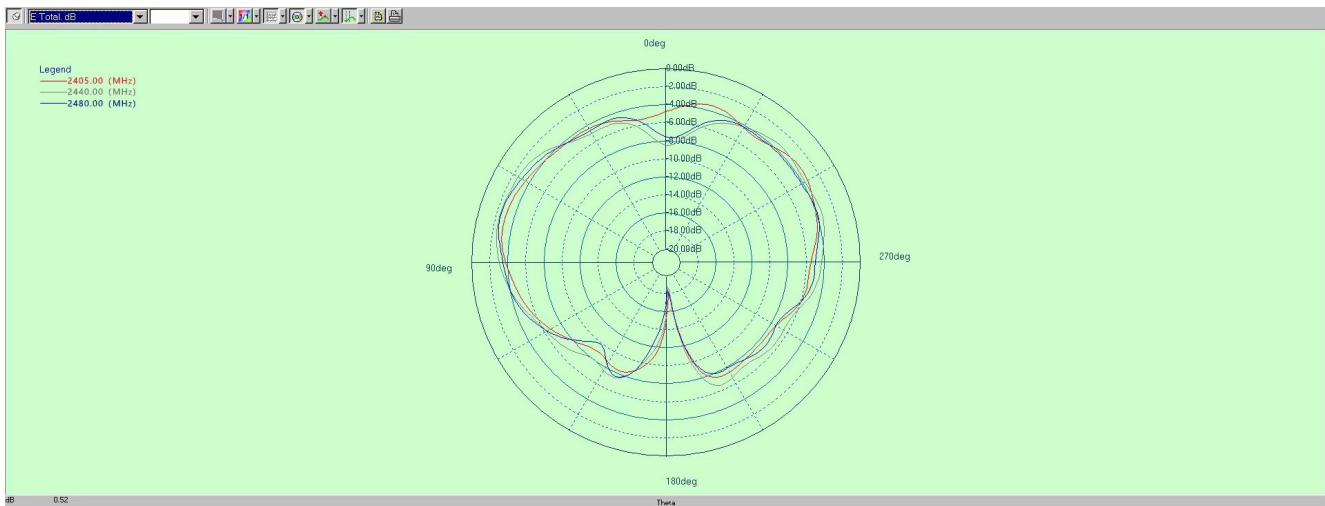


1D radiation pattern

PHI=0



PHI=90



THETA=90

