



EDM-00AA-US  
Smart Dimmer Switch V1.0



User Manual

## Features

---



Touch Dimming



Light Dimming



Fan Control



WIFI Connection



Mechanical ON/OFF Switch

## Product Introduction

---

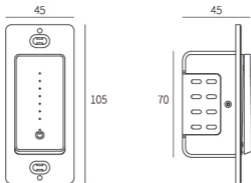
1. Excellent design process and high-quality materials to ensure long-term stable and reliable service to users
2. Aluminum heatsink with independent thermal shutdown protection circuit to ensure safe use of electricity
3. Mechanical ON/OFF Switch - Provide users with the best switch feedback
4. Stepless touch makes the brightness adjustment more linear
5. Wi-Fi connection is easy to use, has the most applicability, and has access to multiple platforms such as Amazon Alexa and Google Assistant

## Technical Parameters

---

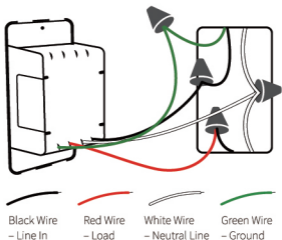
Model No.:	EDM-00AA-US
Input Power:	100~240V AC 50~60Hz
Dimming Control:	TRIAC Edge Cut
Inductive load (LED/CFL/Fan):	250W Max
Resistive load (Incandescent):	480W Max
Communication:	WiFi 802.11 b/g/n 2.4GHz
Control Channel:	1 CH
Working Temperature:	-10°C ~ 45°C
Working Humidity:	<90%
Max Current:	7A
Standby Power:	≤0.5W
Button Life:	500K times
Dimension:	105*45*45mm

---



## Installation

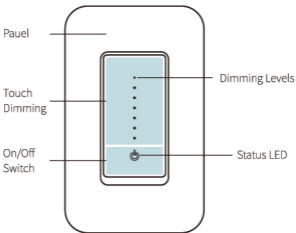
---



1. Disconnect power by circuit breaker
2. Check the Line with voltage tester pen, make sure the power is off to prevent electric shock
3. Follow the wiring instructions, connect the dimmer wires to each other leads and check for short circuits
4. Screw the dimmer into the back box
5. Mounting switch cover plate
6. Connect circuit breaker restore power

## Connection & Operation

---



1. Once connect power correctly, the Green led on the bottom of dimmer will turn on, dimmer switch is ready to serve
2. Push on/off button to turn on/off the light
3. When the light is on, the user can touch the control panel adjust the brightness of the light, and the status indicator on the panel will change at the same time
4. When the light is off, Green power led will on

### Reset the product:

Press and hold ON/OFF button for 5second then release, Green power indicator will flash, dimmer get into setup mode, please follow setup instruction to complete setup to start smart function

## APP Operation

Scan QR code and download the app iOS or Android version



### 2. Register and login

The user needs to register the user first, and can use the mobile phone number to register.

Once you are done, you can use this username to log in to the APP and proceed to the next step.

\*Support some third-party accounts are directly logged in

China +86 >

Mobile number/e-mail address

Obtain verification code

I agree with Service Agreement and Privacy Policy

China +86 >

Mobile number/e-mail address

Password

Log in

Verification code login    Forgot password

Log in with social media account

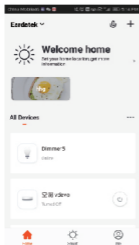
I agree with Service Agreement and Privacy Policy

## APP Operation

---

### 3. Add Devices

After the user logs in, click the “+” icon in the upper right corner of the main page to enter the add device interface, select the “Switch” menu and click the switch device icon

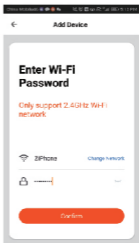


## APP Operation

---

### 3. Add Devices

To ensure that the new dimmer power LED is flashing, select the Wi-Fi and enter the password then click OK.



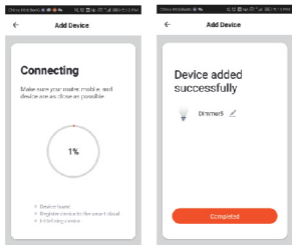


## APP Operation

### 4. Add Devices

Wait system to search the device, connect and configure the device will takes up to 3min.

Once the device configure successfully, please also input preferred name and select location.



#### Remark:

1. Smart phone and device must connect to same Wi-Fi during setup mode
2. The device must be added to the account before it can be controlled remotely
3. After the device is successfully accessed, other users can obtain control of the product through the sharing function.

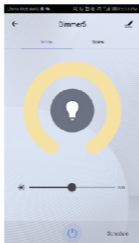
#### Troubleshooting

1. Can not connect to Wi-Fi router
  - a) Also make sure you have good Wi-Fi signal strength at the location of the dimmer
  - b) Metal box and metal surface - wall board may block Wi-Fi signal
  - c) Make sure input correct Wi-Fi password
  - d) The Dimmer only support 802.11 b/g/n 2.4GHz Wi-Fi signal, 5GHz NOT support

## APP Operation

---

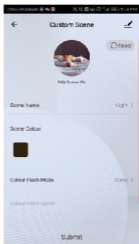
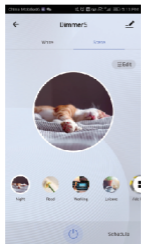
### 5. Control dimmer with APP



## APP Operation

---

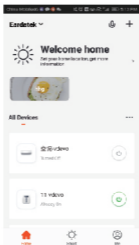
### 6. Add scene mode and timing mode in the APP



## APP Operation

---

7. All added devices can be viewed in the main menu of the APP



## FCC Caution.

---

This device complies with part 15 of the FCC Rules. Operation is subject to the following two conditions: (1) This device may not cause harmful interference, and (2) this device must accept any interference received, including interference that may cause undesired operation.

### § 15.21 Information to user.

Any Changes or modifications not expressly approved by the party responsible for compliance could void the user's authority to operate the equipment.

### § 15.105 Information to the user.

Note: This equipment has been tested and found to comply with the limits for a Class B digital device, pursuant to part 15 of the FCC Rules. These limits are designed to provide reasonable protection against harmful interference in a residential installation. This equipment generates uses and can radiate radio frequency energy and, if not installed and used in accordance with the instructions, may cause harmful interference to radio communications. However, there is no guarantee that interference will not occur in a particular installation. If this equipment does cause harmful interference to radio or television reception, which can be determined by turning the equipment off and on, the user is encouraged to try to correct the interference by one or more of the following measures:

- Reorient or relocate the receiving antenna.
- Increase the separation between the equipment and receiver.

## FCC Caution.

---

-Connect the equipment into an outlet on a circuit different from that to which the receiver is connected.

-Consult the dealer or an experienced radio/TV technician for help.

## Manufacture

---

Address: Block A, Lianfeng Creative Park, No.2 Jisheng Road.,  
Huangge Town, Nansha District, 511455 Guangzhou, PRC.

Phone: 400-838-3100

Phone: 020-28662868

Fax: 020-28662869

E-mail: [info@eardatek.com](mailto:info@eardatek.com)

Web: [www.eardatek.com](http://www.eardatek.com)