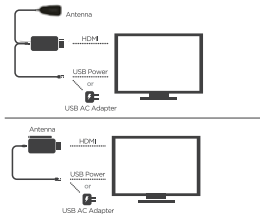




HOW TO GET STARTED

Getting started

1. Plug WIFI EZcast into your TV



2. Switch input

Switch your tv input/source until you see the setup screen



3. Download the EZcast app

Search for EZCast in your app market or scan the QR code below.



PC or Mac

visit: www.iezvu.com/download

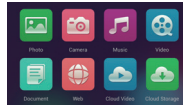
Setup the EZCast App

Android™

1. Launch the app, A quick walkthrough will guide you in getting started.
2. Connect to the EZCast ssid network, The password will be shown at the top of your TV.
3. Tap the screen to progress through the prompts,
4. Use the on-screen remote to select your home Wi-Fi network,
5. Connect to your home Wi-Fi network.

Tap back once the connection is complete.

You can now beam via the EZCast buttons at the top of the app home screen.



DLNA™

Play music, videos, and movies on your TV while freeing up your device for other uses.

You must have a DLNA compatible device with a DLNA compatible app. We recommend Skifita™.

1. Tap the DLNA icon,
2. Choose your DLNA App,
3. Choose your media source, Your media source will be your Android device.
4. Choose your player, EZCast as your player,
5. Choose your media.

You are now ready to beam by DLNA.

EZMirror

The EZMirror feature mirrors your device's screen on your TV.

Your device must have Miracast™ to use this feature.

Be sure Miracast is turned on in your device settings, Depending on the manufacturer of your device it may be called wireless display, ScreenShare™, Screen Sharing or Screen Mirroring.

1. Tap EZMirror in the EZCast App
2. Tap the ON button
3. Reconnect to your home Wi-Fi network.
4. When connected, go to your Miracast settings,
5. Tap search for display on your device
6. Tap MediaBeam

Your devices display will be mirrored on your TV.

To stop mirroring go back to the EZCast app and tap the blue On button. You will be prompted to reconnect directly to EZCast

EZCast icons

- Photo - Share your gallery to your TV.
- Camera - Display a feed from your camera on your TV.
- Music - Play your music through your TV.
- Video - Play your videos on your TV.
- Documents - View your documents on your TV.
- Web - Browse the internet on your TV.

Cloud Video - Play video from online sources.

Cloud Storage - Display and annotate files from a cloud storage service.

DLNA - Play music, videos, and movies on your TV while freeing up your device for other uses. You must have a DLNA compatible device with a DLNA compatible app.

Settings - Change EZCast settings and manage Wi-Fi networks.

Android
EZMirror - Mirror your device's screen on your TV. Your device must have Miracast to use this feature.

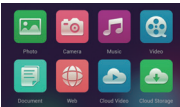
iOS
EZAir - Share your music, photos, and videos on your TV while freeing up your device for other uses.

iOS

1. Go to your settings and choose the EZCast SSID network.
2. Enter the password shown at the top of your TV.
3. Go to your home screen and launch the app, Swipe through the walkthrough showing you the steps to get started, Tap START
4. Use the on-screen remote to select your home Wi-Fi network,
5. Connect to your home Wi-Fi network.

Tap back once the connection is complete.

You can now beam via the EZCast buttons at the top of the app home screen.



DLNA

Play music, videos, and movies on your TV while freeing up your device for other uses.

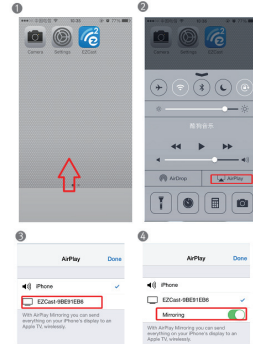
You must have a DLNA compatible device with a DLNA compatible app. We recommend Skifita™.

1. Tap the DLNA icon,
 2. Choose your DLNA App,
 3. Choose EZCast as your playback device,
- You are now ready to beam by DLNA.

EZAir

Iphone/ IPAD mirror

1. pull the menu up
2. click airplay
3. choose "ezcast SSID",
4. click "mirror"



Requirements:
iOS6.0 or later. Iphone 4S or later. Ipad

PC

1. Visit www.iezvu.com/download to download and install the EZCast software.
 2. Reboot your computer once the installation has completed,
 3. Launch the application and follow the prompts to connect to EZCast by Wi-Fi,
 4. Enter the password shown at the top of your TV.
- You can now send media to your TV.

DLNA

Play music, videos, and movies on your TV while freeing up your device for other uses.

1. Click the DLNA icon, Your internet browser will open with a list of supported media players and how to set them up,
2. Open your media player and select which media you want to play, Right click it and choose "Play to EZCast"

EZMirror

EZMirror allows you to share your music, photos, and videos on your TV. *EZ Mirror function is only compatible with Windows 8.1 and compatible hardware.

1. First go to your Settings Charm.
2. Click Change PC Settings.
3. Select Devices.
4. Select Add a Device,
5. Your computer will search for devices. Select EZCast when found.
6. Go back to your Devices Charm,
7. Select Project

You can now begin projecting your monitor to your TV.

Mac

1. Visit www.iezvu.com/download to download and install the software.
2. During installation you will be prompted to also install Soundflower. Soundflower allows you to send audio.
3. Restart your computer when the installation is complete.
4. Connect to EZCast by Wi-Fi using the password shown at the top of your TV.
5. Launch the EZCast app and click the On button to mirror or extend your screen on your TV.

EZAir

EZAir allows you to share your music, photos, and videos on your TV. *EZAir function is only compatible with Macs that support AirPlay™ Mirroring.

1. Tap EZAir
2. Choose from your personal gallery of photos, music, or videos to mirror onto your TV.

Settings

Update to the newest version of EZCast, or change the resolution, password, or language.

Use the EZCast back button to navigate back through your settings. Use your device's back button to return to the EZCast Home screen.

Youtube Ezcast channel:
Visit <http://www.youtube.com/channel/UCrzaLjA1EiBiYR4VKCoZpA>

Notes:

This equipment has been tested and found to comply with the limits for a Class B digital device, pursuant to Part 15 of the FCC Rules. These limits are designed to provide reasonable protection against harmful interference in a residential installation. This equipment generates, uses and can radiate radio frequency energy and, if not installed and used in accordance with the instructions, may cause harmful interference to radio communications.

However, there is no guarantee that interference will not occur in a particular installation. If this equipment does cause harmful interference to radio or television reception, which can be determined by turning the equipment off and on, the user is encouraged to try to correct the interference by one or more of the following measures:

- Reorient or relocate the receiving antenna.
- Increase the separation between the equipment and receiver.
- Connect the equipment into an outlet on a circuit different from that to which the receiver is connected.
- Consult the dealer or an experienced radio/TV technician for help.

The antenna(s) used for this transmitter must be installed to provide a separation distance of at least 20 cm from all persons and must not be co-located or operating in conjunction with any other antenna or transmitter within a device, except in accordance with accepted multi-transmitter product procedures. End-users and installers must be provided with antenna installation instructions and transmitter operating conditions for satisfying RF exposure compliance.

All electrical and mechanical devices employed for spurious radiation suppression, including any modifications made during certification testing, must be incorporated in each unit marketed.

Caution: Any changes or modifications not expressly approved by the party responsible for compliance could void the user's authority to operate this equipment.

RF Exposure Statement

To maintain compliance with FCC's RF Exposure guidelines, This equipment should be installed and operated with minimum distance of 20cm the radiator your body. This device and its antenna(s) must not be co-located or operation in conjunction with any other antenna or transmitter