

1. Overview

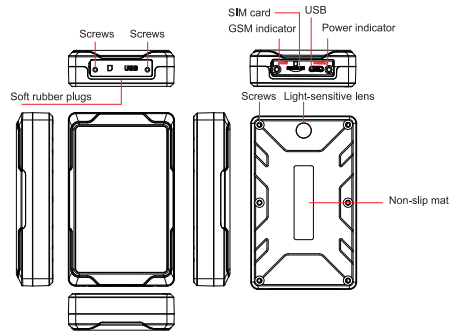
1.1 Features

- GPS+LBS positioning
- Solar powered
- Tamper alert
- Low battery alert

1.2 Specifications

GSM frequency	850/900/1800/1900 MHz
Positioning way	GPS/LBS
Positioning accuracy	<10m
Working voltage/current	3.7V/60mA
Device weight	156g
Device dimension	95.0*58.5*20.5mm
Operating temperature	-20 C ~70 C

2. Your Device



3. LED Indicators

(1) Green LED: GSM

Status	Meaning
Flash	Device offline
Slowly flash	GPRS online
Off	No SIM card / GPS sleeps

(2) Red LED: Power

Status	Meaning
Flash (0.3 seconds on, 0.3 seconds off)	Low battery
On for 1 second and off for 3 seconds	Fully charged
On for 0.1 second and off for 3 seconds	Normal work
Solid red	USB charging (No indication for solar charging)
Off	Power off / GPS sleeps

4. SIM Card

(1) SIM card

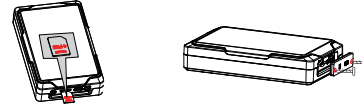


Notice:

- SIM should be inserted correctly.
- SIM card should have GPRS service.

(2) SIM card installation

A. Insert the SIM card in the right direction.

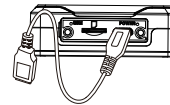


B. Take out the screws, soft rubber plug and screwdriver, then assemble the soft rubber plug and fix the screws.

5. Charging

Connect the charger to the original charging cable. If the red LED is always on, it indicates that the device is charging. The red LED will flash when the device is fully charged.

The device can also be charged by solar (no indication for solar charging) .



Note:

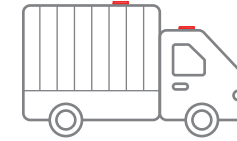
- It takes about 4 hours to fully charge the device.
- The device is slightly heated when charging, which is normal.
- The device can also be charged with 5V car charger.

6. Device Installation

(1) With strong magnet, the device can be adsorbed in somewhere around the vehicle.

(2) The device supports solar charging. Please install the device on the top of the vehicle where it can get sufficient sunlight.

(3) The device features tamper alert via the light sensor; therefore, its bottom must be closely attached to the mounting surface.



7. Basic Operation & Functions

7.1 Power on

The device power on automatically when SIM card inserted.

7.1 Power off

The device power off automatically when SIM card removed.

7.3 Working modes.

(1) Tracking mode (default): GSM is always ON and location data uploaded in set time interval. Time interval can be set on APP or designated platform.

SMS command format:

MODE,1,T1,T2#

1 means tracking mode

T1: upload interval of GPS data in moving status, unit: second, 10-3600s; default: 10s

T2: upload interval of GPS data in static status unit: second, 180-65535s; default: 3600s

(2) Ultra-long standby mode: device wakes up and uploads location data in a fixed time.

Notice: In this mode, all command will NOT be executed until the device wakes up at preset time interval. If you want to compel the device to wake up and receive command, you can:

- By trigger the tamper alert.
- Power OFF and power ON the device again.

SMS command format:

MODE,2,T1,T2#

"2" means ultra-standby mode.

"T1" means the start time of sleeping period. Format: HH:MM.

"T2" means the sleep time interval, which options are 1,2,3,4,6,8,12,24,48,72 (hours).

Default: 24 hours.

Note: SMS command takes effect after device wakes up.

E.g. MODE,2,12:00,8# (Meaning: Device starts to fall asleep at 12:00, and wakes up every 8 hours)

7.4 Tamper alert

Alert will be triggered if light detected and the device will switch to real-time tracking mode (upload location data every 1 minute for 20 minutes).

8. Login service platform

Please login the designated service platform to set and operate the device.

Download APP

Please download and install the APP in designated website, APP store or Google Play store.



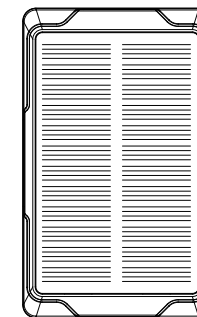
9. Troubleshooting

If you are having trouble with your device, try these troubleshooting procedures before contacting a service professional.

Common problems	Causes	Solutions
Bad signal	Radio waves cannot communicate with device when it is used in a bad signal area, like basement or space besides tall building.	Put it in somewhere with good signal
Fail to power on	Low battery	Charging
	Fusing	Contact supplier to replace the fuse
Fail to connect to the network	SIM card installed incorrectly	Check the SIM card
	The sheet mental of SIM card is dusty	Wipe with a clean wiper.
	Damaged/Invalid SIM card	Contact your internet service provider
	Out of GSM service area	Move back to the GSM service covered area.
Fail to check location	Weak signal	Try again in a strong signal area
	SIM card has no access to GPRS service	Please contact SIM card sell service to activate GPRS functions
Fail to charge	Overdue SIM card	Recharge
	Weak sunlight/Solar panel damaged/Poor contact	Check the power cable/Remove the device to somewhere with great sunlight/ Replace solar panel

JM-LG04 Asset GPS Tracker

User Manual
V1.0



To ensure quickly and correctly use, please read this manual carefully before using. Any changes to the product appearance, color or accessories are without notice.

FCC regulatory conformance:

This device complies with Part 15 of the FCC Rules. Operation is subject to the following two conditions:

- (1) This device may not cause harmful interference.
- (2) This device must accept any interference received, including interference that may cause undesired operation.

NOTE: This equipment has been tested and found to comply with the limits for a Class B digital device, pursuant to part 15 of the FCC Rules. These limits are designed to provide reasonable protection against harmful interference in a residential installation.

This equipment generates uses and can radiate radio frequency energy and, if not installed and used in accordance with the instructions, may cause harmful interference to radio communications. However, there is no guarantee that interference will not occur in a particular installation. If this equipment does cause harmful interference to radio or television reception, which can be determined by turning the equipment off and on, the user is encouraged to try to correct the interference by one or more of the following measures:

- Reorient or relocate the receiving antenna.
- Increase the separation between the equipment and receiver.
- Connect the equipment into an outlet on a circuit different from that to which the receiver is connected.
- Consult the dealer or an experienced radio/TV technician for help

NOTE: The manufacturer is not responsible for any radio or TV interference caused by unauthorized modifications to this equipment. Such modifications could void the user's authority to operate the equipment.

RF Exposure:

This equipment complies with FCC radiation exposure limits set forth for an uncontrolled environment. This equipment should be installed and operated with minimum distance of 20 cm between the radiator and your body. This transmitter must not be co-located or operating in conjunction with any other antenna or transmitter.