
Antenna specification

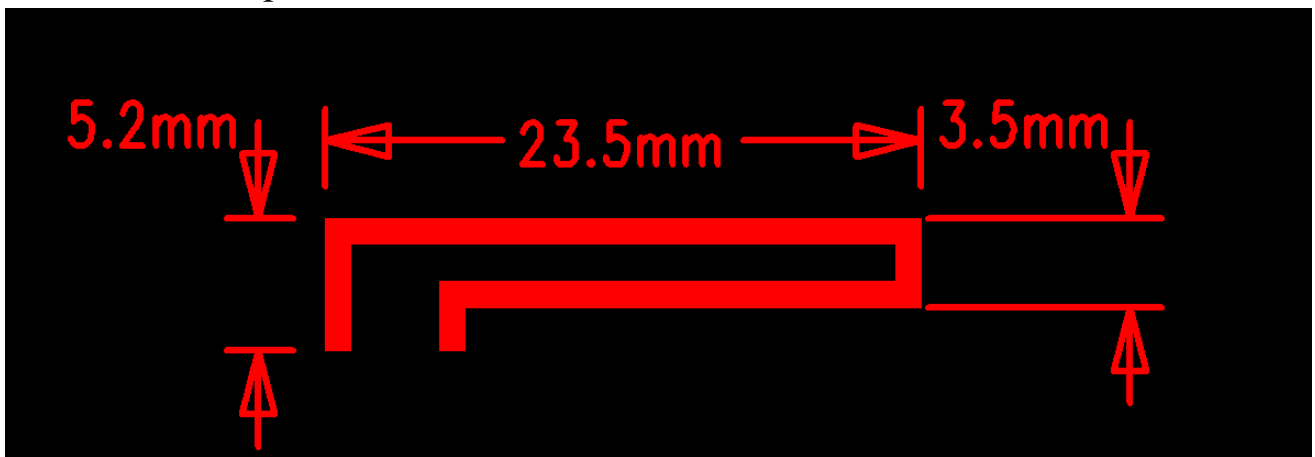
1、 Antenna introduction

The Bluetooth module antenna is directly used on the PCB.

Manufacturer: Shenzhen Jimi IoT Co.,Ltd.

Address : 3-4/F, Block A, Building #7, Shenzhen International Innovation Valley, Dashi 1st Road, Nanshan District, Shenzhen, Guangdong, China

2、 Antenna shape



3、 Antenna parameter

The Bluetooth antenna operates at 2400-2500 MHz and generates resonance in this band. The table below shows the main parameters of the antenna.

Frequency (MHz)	2400 ~ 2500 MHz
VSWR	≤ 2.0
Impedance	50 Ohm
Return Loss	-15 dB Max
Radiation	Omni-directional

Gain (Peak)	2.26 dBi
Polarization	Linear, Vertical
Admitted Power	1MW
Connector	Tin

4、 Antenna gain report

Frequency (MHz)	Total. dBi
2400MHz	1.29
2410MHz	1.13
2420MHz	1.49
2430MHz	1.40
2440MHz	1.79
2450MHz	1.52
2460MHz	1.88
2470MHz	1.89
2480MHz	2.26
2490MHz	1.92
2500MHz	1.83

Direction map:

