

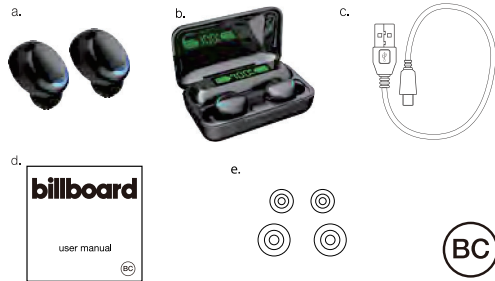
billboard

TRUE WIRELESS EARBUDS WITH PORTABLE POWER

Thank you for purchasing the Billboard® True Wireless Earbuds with Portable Power. For best use of this device, we recommend carefully reading this user manual and keeping it for your records.

Package contains:

- True Wireless Earbuds
- Charging Case
- USB charging cable
- User manual
- Extra ear cushions



Special Note: The left and right earbuds have been paired when the earbuds leave the factory. If the left and right earbuds cannot be teamed up, please follow the steps below: Turn off all the left and right earbuds manually, then manually press and hold the main button on the left and right earbuds at the same time and do not let go (about 5 seconds), the blue light flashes—red and blue light Alternately flashing—the blue light is always on—the red and blue light is flashing alternately—let go, and then wait for the left and right earbuds to pair and interconnect automatically.

Note: This operation is also to clear the team record between the mobile phone and the earbuds, so you need to delete the previous Bluetooth pairing record of the mobile phone, and then search for the connection again.

Device Safety

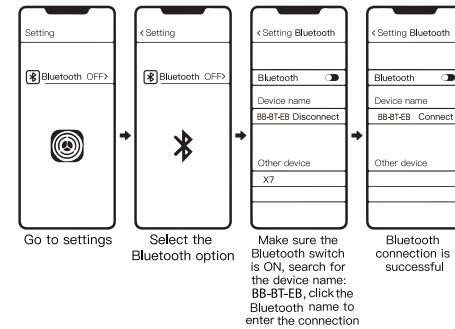
- Your True Wireless Earbuds have internal rechargeable batteries. Improper usage may result in the Earbuds becoming hot, ignite or burst and cause injury if exposed to conditions of abuse.
- Do not disassemble, throw away or damage the True Wireless Earbuds.
- Store the True Wireless Earbuds in a dry place, keeping them away from damp corrosive materials and environments such as salt air.
- Keep the True Wireless Earbuds away from direct sunlight, fire and high voltage equipment. Do not store the True Wireless Earbuds inside a car during hot weather. Remember a closed car acts as a green house allowing the inside to reach high temperatures.
- The True Wireless Earbuds are not a toy. Please keep them out of the reach of young children.
- Please do not discard the True Wireless Earbuds. Consult your local waste collection agency for proper disposal or recycling methods. You may also contact "Call2Recycle" at 877-273-2925 or online at "call2recycle.org" for a battery recycling drop off location near you.



Instructions for use

- Make sure that the charging case has electricity. If the charging case is out of power, please fully charge the charging case; (Pick up the two earbuds and put them back together to the charging case. The indicator light of the charging case is on to indicate that there is electricity, and no light indicates that there is no electricity)
- Take the two earbuds out of the charging case and put them on the left and right ears respectively, the earbuds will automatically turn on and pair automatically;
- Turn on the Bluetooth of the mobile phone, click the connection pairing name "BB-BT-EB" to connect and use.

Pairing diagram



Battery Information

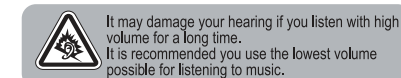
Your earbuds are powered by a rechargeable batteries. The full performance of new batteries is achieved only after two to three complete charge and discharge cycles. The batteries can be charged and discharged hundreds of times, but it will eventually wear out.

- Do not leave a fully charged earbuds connected to a charger, overcharging may shorten their lifetime. If left unused, fully charged earbud batteries will lose their charge over time.
- Never use any charger that is damaged.
- Leaving the device in hot or cold places will reduce the capacity and lifetime of the batteries. Optimal temperature for the batteries is between 59°F and 77°F. A device with a hot or cold batteries may not work temporarily, even when the batteries are fully charged.
- Do not dispose of batteries in a fire as they may explode. Batteries may also explode if damaged. Always dispose of batteries according to local regulations. Please recycle. Do not dispose as household waste.

© Billboard Media, LLC Billboard and the Billboard logo are registered trademarks of Billboard IP Holdings, LLC. Used under license.

Manufactured By ESI Cases & Accessories One Gateway Center Suite 2600 Newark, NJ 07102 TechSupport@esicellular.com

All other trademarks are the property of their Respective companies. The Bluetooth® word mark and logos are registered trademarks owned by Bluetooth SIG, Inc.



Indicator light description

- Charging the earbuds :** Put the earbuds into the charging case and close the cover to charge.
Earbuds indicator : red light is on when charging, red light is off when fully charged. The charging case flashes green when charging and turns off when charging is complete.
- Charging the charging case:** Plug the 5V/1A USB into the charging port to charge. During charging, the number in the middle of the display of the charging stand indicates the power of the charging case. When the number displays "100", it means the battery is fully charged.
Charging case indicator light: light flashes green when charging, light will be solid when charging is complete.
- Charging the mobile phone in the charging case:** Connect the USB to the discharge port of the charging case to charge the mobile phone.
Charging case indicator light: the green light is on when charging, and the light is off when charging is complete.

Function operation

When using it for the first time or not using it for a long time, please be sure to charge the charging case and the earbuds before using it. Please keep it within 10 meters of an unobstructed effective environment, otherwise it may become stuck and disconnected.

Power on : take the earbuds out from the charging case the earbuds will turn on automatically, if not please long press the MFB to turn on.

Power off : long press the MFB until power off ,or directly put the earbuds back into the charging case, the earbuds will automatically turn off when the red light is on.

Playing Music : once the earbuds are paired, press play on your device. Short press the MFB to pause playback, and again to resume.

Answering calls: when the phone calls, short press the MFB on either side to answer, and press again to hang up. Long press the MFB on either side to refuse an incoming call.

Voice control function: press and hold MFB for 1S until you hear a "Beep" sound which activates your voice assistant, short press the MFB to end this function.

FCC Information

FCC ID: 2AML6KR320B

This device complies with Part 15 of the FCC rules. Operation is subject to the following two conditions: (1) this device may not cause harmful interference, and (2) this device must accept any interference received; including interference that may cause undesired operation. Federal Communications Commission (FCC) Statement This Equipment has been tested and found to comply with the limits for a Class B digital device, pursuant to Part 15 of the FCC rules. These limits are designed to provide reasonable protection against harmful interference in a residential installation. This equipment generates, uses and can radiate radio frequency energy and, if not installed and used in accordance with the instructions, may cause harmful interference to radio communications. However, there is no guarantee that interference will not occur in a particular installation. If this equipment does cause harmful interference to radio or television reception, which can be determined by turning the equipment off and on, the user is encouraged to try to correct the interference by one or more of the following measures:

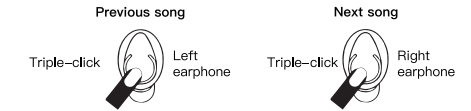
- Reorient or relocate the receiving antenna.
- Increase the separation between the equipment and receiver.
- Connect the equipment into an outlet on a circuit different from that to which the receiver is connected.
- Consult the dealer or an experienced radio/TV technician for help.

Warning: Changes or modifications to this unit not expressly approved by the party responsible for compliance could void the user authority to operate the equipment. Tested to comply with FCC standard. FOR HOME OR OFFICE USE.

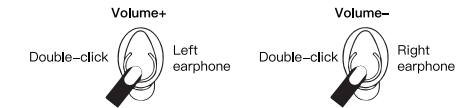
Warning:

This equipment complies with FCC RF radiation exposure limits set forth for an uncontrolled environment. This device and its antenna(s) must not be co-located or conjunction with any other antenna or transmitter.

Change song operation: triple click the MFB of the left earbud to skip to previous song, triple click the MFB of the right earbud to skip to next song.



Volume control operation: double click the MFB of the right earbud to decrease volume, double click the MFB of the left earbud to increase volume, you can also directly operate the volume button on the mobile phone to adjust the volume level.



Single-ear use alone: When the main earbuds and the secondary earbuds are not connected, take out one of them separately from the charging case, the earbuds prompts "on" and the blue light flashes for 3 seconds – the red and blue lights flash alternately, click to turn on Bluetooth, search for Bluetooth devices and click to connect, The "Bluetooth connected icon" will be displayed in the upper right corner of the phone screen and the earbuds will prompt "Connected successfully", or a single earbud can be manually turned on to repeat the above operations.

Operation for more than two times: with the mobile phone that has been connected and used – turn on the Bluetooth of the mobile phone, and take out the earbuds in the charging case at the same time, it will be automatically connected to the mobile phone without any operation. If you use different mobile phones more than two times, you need to follow the steps in the instructions before you can use them.

LIMITED WARRANTY

ESI Cases & Accessories, Inc., warrants to the first consumer purchaser that this product, when shipped in its original container to the original purchaser will be free from defective workmanship and materials for one year and agrees that it will, at its option, either repair the defect or replace the defective product or part thereof at no charge to the purchaser for parts or labor for the time periods described.

This warranty does not apply to any appearance items of the product nor to the additional excluded item(s) set forth below nor at any product the exterior of which has been damaged or defaced which design or construction. The limited warranty described herein is in addition to an applicable law. ALL IMPLIED WARRANTIES INCLUDING THE WARRANTIES OF MERCHANTABILITY AND FITNESS FOR USE ARE LIMITED TO THE PERIOD FROM THE DATE OF ORIGINAL PURCHASE SET FORTH BELOW.

Some states do not allow limitations on how long an implied warranty lasts, so the above limitation may not apply to you. Neither the sales personnel of the seller nor any other person is authorized to make any warranties other than those described herein or to extend the duration of any warranties beyond the time period described herein on the behalf of ESI Cases & Accessories, Inc.

The warranties described herein shall be the sole and exclusive warranties granted by ESI Cases & Accessories, Inc. and shall be the sole and exclusive remedy available to the purchaser corrections of defects, in the manner and for the period of time described herein, shall constitute complete fulfillment of all liabilities and responsibilities of ESI Cases & Accessories, Inc. to the purchaser with respect to the product and shall constitute full satisfaction of all claims, whether based on contract negligence, strict liabilities and responsibilities of ESI Cases & Accessories, Inc. be liable or in any way responsible, for any incidental or consequential damages, so the above exclusion may not apply to you. THIS WARRANTY GIVES YOU SPECIFIC LEGAL RIGHTS. YOU MAY ALSO HAVE OTHER RIGHTS, WHICH VARY FROM STATE TO STATE.

This warranty does not cover cables that have become frayed, cracked, or broken from use. The user should immediately replace this, or any, charge cable that has become frayed, cracked, or broken, as it may constitute a serious safety risk, including electrocution, if it is continued to be used.

Send product with \$11.95 shipping & handling fee to:
ESI Cases & Accessories
One Gateway Center, Suite 2600 Newark, NJ 07102
TechSupport@ESICellular.com