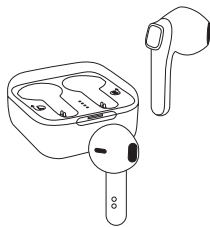


# billboard

## TRUE WIRELESS EARBUDS for use with Bluetooth® enabled devices



THANK YOU FOR PURCHASING OUR PRODUCT.

WE HOPE YOU ENJOY IT AS MUCH AS WE DO.

FOR INITIAL USE, PLEASE MAKE SURE THE EARPHONES AND THE CASE ARE FULLY CHARGED.

True Wireless Earbuds  
USER MANUAL

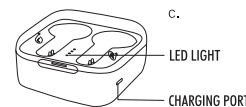
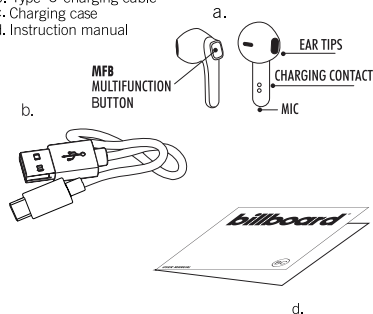


### Introduction

Thank you for purchasing the Billboard True Wireless Earbuds. For best use of this device we recommend carefully reading this user manual and keeping it for your records

### Package Contents

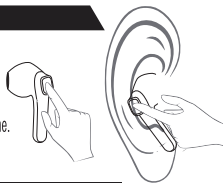
- True Wireless Earbuds
- Type-C charging cable
- Charging case
- Instruction manual



### FUNCTIONS

#### Learning to use the MFB

Use your index finger to press on the **MFB** while pressing your thumb on the back of the earphone.



#### ANSWER / END A CALL

PRESS & RELEASE any **MFB** to ANSWER a call  
PRESS & RELEASE any **MFB** to END a call



#### PLAY / PAUSE

PRESS & RELEASE any **MFB** to get your music to PAUSE and  
PRESS & RELEASE any **MFB** to get your music playing again

#### NEXT / PREVIOUS TRACK

PRESS 3x right **MFB** to skip to the NEXT TRACK and  
PRESS 3x left **MFB** to skip to the PREVIOUS TRACK



#### VOICE CONTROL\*

PRESS & HOLD one **MFB** for 1 second or until you hear a "Beep" sound which activates your voice assistant (such as Google per example) \*Phone dependant feature

### Device Safety

- Your True Wireless Earbuds have internal rechargeable batteries. Improper usage may result in the Earbuds becoming hot, ignite or burst and cause injury if exposed to conditions of abuse.
- Do not disassemble, throw away or damage the True Wireless Earbuds.
- Store the True Wireless Earbuds in a dry place, keeping them away from damp corrosive materials and environments such as salt air.
- Keep the True Wireless Earbuds away from direct sunlight, fire and high voltage equipment. Do not store the True Wireless Earbuds inside a car during hot weather. Remember a closed car acts as a green house allowing the inside to reach high temperatures.
- The True Wireless Earbuds are not a toy. Please keep them out of the reach of young children.
- Please do not discard the True Wireless Earbuds. Consult your local waste collection agency for proper disposal or recycling methods. You may also contact "Call2Recycle" at 877-273-2925 or online at "call2recycle.org" for a battery recycling drop off location near you.



### Charging the earbuds

- Plug the earbuds into the charging case, the charging case indicator will be solid blue and the earbuds indicator will be solid red during charging.
- When the battery of earbuds is fully charged, the indicator of the charging case will turn off.

### Charging the charging case

- Please plug the charger cable into the charging case.
- Connect the charger to a USB power source, the charging case indicator will flash blue during charging. If charging does not start, disconnect the charger plug it in again, and retry. Charging the batteries fully may take hours.
- When the battery of the charging case is fully charged, the blue indicator light will be solid. Disconnect the charger from the USB power source and the charging case.

### FCC Information

FCC ID: 2AMLR240

This device complies with Part 15 of the FCC rules. Operation is subject to the following two conditions: (1) this device may not cause harmful interference, and (2) this device must accept any interference received; including interference that may cause undesired operation. Federal Communications Commission (FCC) Statement This Equipment has been tested and found to comply with the limits for a Class B digital device, pursuant to Part 15 of the FCC rules. These limits are designed to provide reasonable protection against harmful interference in a residential installation. This equipment generates, uses and can radiate radio frequency energy and, if not installed and used in accordance with the instructions, may cause harmful interference to radio or television reception, which can be determined by turning the equipment off and on, the user is encouraged to try to correct the interference by one or more of the following measures:

- Reorient or relocate the receiving antenna.
- Increase the separation between the equipment and receiver.
- Connect the equipment into an outlet on a circuit different from that to which the receiver is connected.
- Consult the dealer or an experienced radio/TV/technician for help.

Warning: Changes or modifications to this unit not expressly approved by the party responsible for compliance could void the user authority to operate the equipment. Tested to comply with FCC standard. FOR HOME OR OFFICE USE.

### Warning:

This equipment complies with FCC RF radiation exposure limits set forth for an uncontrolled environment. This device and its antenna(s) must not be co-located or conjunction with any other antenna or transmitter.

### Power on/Power off

- Take the earbuds out from the charging case the earbuds will turn on automatically, if not please long press the MFB to turn on.
- Long press the Multifunction button until power off.

### Pairing One Earbud

- Activate the Bluetooth® feature on your phone, and set the phone to search for wireless devices. (See the User Manual for your device)
- Tap the Earbuds on your device displayed as BB-BT-EB. (if pass code is requested enter 0000)
- When it isn't paired, the earbud will turn off automatically in a few minutes.

### Pairing Two Earbuds

- Two earbuds will pair automatically when you turn on the earbuds. (If they don't pair automatically, please double click either side of Multifunction button) When pairing is successful, the primary earbud (right) will flash blue and red, the secondary earbud will flash blue every few seconds.
- Activate the Bluetooth® feature on your device, and set the device to discovery mode to search for wireless devices. (See the User Manual for your device)
  - If you've previously paired a single earbud, the paired set should be paired as a new device with the name below.
- Tap the earbuds on your device displayed as BB-BT-EB. (if pass code is requested enter 0000)
- Once the Earbuds have been paired, they will automatically pair with each other and your device, when they are powered on and Bluetooth® is activated on your device.
- When they aren't paired, the earbuds will turn off automatically in a few minutes.

### Playing Music

- Once the Earbuds are paired, press play on your device.
- Short press the Multifunction button to pause playback, and again to resume.

### Answering Calls

- When there is a phone call, you can hear the ringing from both of the earbuds. During the call, both earbuds can hear, but only the primary earbud can talk.
- Answer an incoming call by short press the Multifunction button on either side.
- Refuse an incoming call by long press the Multifunction button on either side.
- Redial the last number used by the device by double-clicking the Multifunction button on either side during playback.

### Battery Information

Your earbuds are powered by a rechargeable batteries. The full performance of new batteries is achieved only after two to three complete charge and discharge cycles. The batteries can be charged and discharged hundreds of times, but it will eventually wear out.

- Do not leave a fully charged earbuds connected to a charger, overcharging may shorten their lifetime. If left unused, fully charged earbud batteries will lose their charge over time.
- Never use any charger that is damaged.
- Leaving the device in hot or cold places will reduce the capacity and lifetime of the batteries. Optimal temperature for the batteries is between 59°F and 77°F. A device with a hot or cold batteries may not work temporarily, even when the batteries are fully charged.
- Do not dispose of batteries in a fire as they may explode. Batteries may also explode if damaged. Always dispose of batteries according to local regulations. Please recycle. Do not dispose as household waste.

© Billboard Media, LLC Billboard and the Billboard logo are registered trademarks of Billboard IP Holdings, LLC. Used under license.

Manufactured By ESI Cases & Accessories One Gateway Center Suite 2600 Newark, NJ 07102 TechSupport@esicellular.com

All other trademarks are the property of their Respective companies. The Bluetooth® word mark and logos are registered trademarks owned by Bluetooth SIG, Inc.



It may damage your hearing if you listen with high volume for a long time. It is recommended you use the lowest volume possible for listening to music.

### LIMITED WARRANTY

ESI Cases & Accessories, Inc., warrants to the first consumer purchaser that this product, when shipped in its original container to the original purchaser will be free from defective workmanship and materials for one year and agrees that it will, at its option, either repair the defect or replace the defective product or part thereof at no charge to the purchaser for parts or labor for the time periods described.

This warranty does not apply to any appearance items of the product nor to the additional excluded item(s) set forth below nor at any product the exterior of which has been damaged or defaced which design or construction. The limited warranty described herein is in addition to an applicable law. ALL IMPLIED WARRANTIES INCLUDING THE WARRANTIES OF MERCHANTABILITY AND FITNESS FOR USE ARE LIMITED TO THE PERIOD FROM THE DATE OF ORIGINAL PURCHASE SET FORTH BELOW.

Some states do not allow limitations on how long an implied warranty lasts, so the above limitation may not apply to you. Neither the sales personnel of the seller nor any other person is authorized to make any warranties other than those described herein or to extend the duration of any warranties beyond the time period described herein on the behalf of ESI Cases & Accessories, Inc.

The warranties described herein shall be the sole and exclusive warranties granted by ESI Cases & Accessories, Inc. and shall be the sole and exclusive remedy available to the purchaser corrections of defects, in the manner and for the period of time described herein, shall constitute complete fulfillment of all liabilities and responsibilities of ESI Cases & Accessories, Inc. to the purchaser with respect to the product and shall constitute full satisfaction of all claims, whether based on contract negligence, strict liabilities and responsibilities of ESI Cases & Accessories, Inc. be liable or in any way responsible, for any incidental or consequential damages, so the above exclusion may not apply to you. THIS WARRANTY GIVES YOU SPECIFIC LEGAL RIGHTS. YOU MAY ALSO HAVE OTHER RIGHTS, WHICH VARY FROM STATE TO STATE.

This warranty does not cover cables that have become frayed, cracked, or broken from use. The user should immediately replace this, or any, charge cable that has become frayed, cracked, or broken, as it may constitute a serious safety risk, including electrocution, if it is continued to be used.

Send product with \$11.95 shipping & handling fee to:  
ESI Cases & Accessories  
One Gateway Center, Suite 2600 Newark, NJ 07102  
TechSupport@ESICellular.com