



iEAST

Wall-Mount Wireless HiFi Multi-Room Stereo Amplifier

AMP-i50B

## Quick Start Guide

Wireless HiFi Multi-room Audio System

[www.ieast.net](http://www.ieast.net)

## Introduction

This amplifier is designed to add iEAST multi-room audio functionality to any pair of stereo speakers. The specialized iOS and Android applications offer you the easiest way to set up a Wireless Multi-Room Sound System. This amplifier also provides the most powerful playback option, which allows you to stream synchronized music or different music from cellphone, Spotify, Pandora, Tidal, Qobuz, vTuner, Napster and other online music services, and NAS/UPnP Network/-flash driver/HDD.

Featuring advanced Class D digital amplifier, this amplifier is of great performance with low distortion and high current capability.

## What's In The Package



AMP-i50B

- AMP-i50B x1
- WiFi Antenna x1
- Bluetooth Antennax1
- IR Receiver Cable x1
- IR Remote Controller x1
- Quick Start Guide x1
- Power Supplier x1
- AUX Cable x1

# Interfaces and Function



AMP-i50B

**WiFi Antenna:** For WiFi connection.

**Bluetooth Antenna:** For Bluetooth pair.

**Micro SD:** To play music from TF card or Micro SD card.

**USB:** To play music from USB flash driver or HDD.

**WPS:** Quick network connection for the device.

**LAN:** To connect the device via wires.

**RS232:** To control features from the central control consoles, please contact us or the local sellers to get the RS232 commands.

**IR:** To use the features on the remote controller, please connect the IR receiver first.

**Line In:** For external audio input device, including CD/DVD/TV...

**Volume knob:** To control the volume from the device.

**LED indicator (white and green):**

**Power on and standby:** White-solid

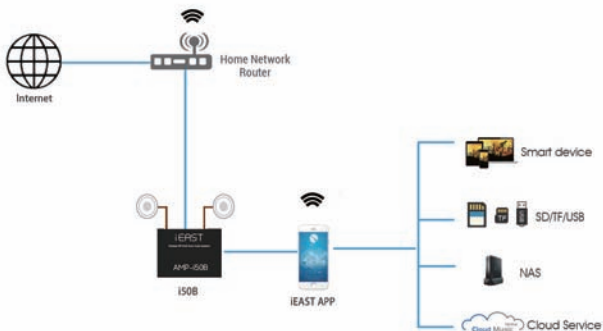
**USB/TF card:** White-slow blink

**Reset:** White-Quick blink

**Line in:** Green-Solid

**Bluetooth:** Green-slow blink

# How It Works



## Installation Guide

Step 1 Unpack

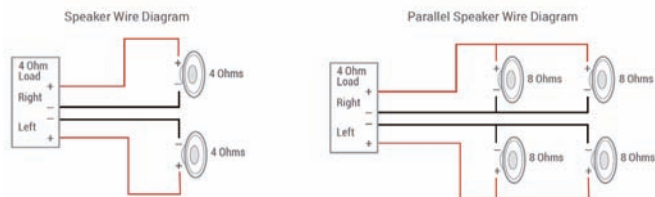
Verify all the accessories are included in the package.

Step2 Place

Place this amplifier at a safe and proper location in your home.

Step3 Connect

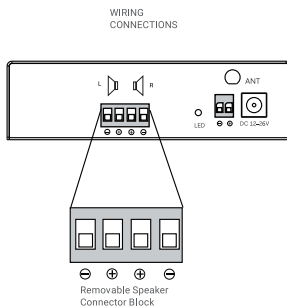
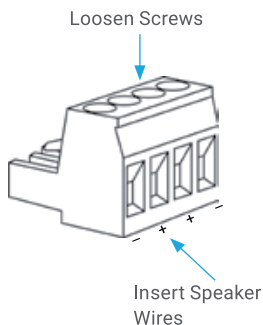
1. Speaker Wiring Diagrams



## 2.Connect the Speaker

### Speaker Wire Connection

Take the Speaker Connector Block that came with the AMP-i50B. Loosen the screws before connecting the speaker wires. Please insert the speaker wire ends properly and tighten down each screw. Note: negative (-) speaker wire on the outside terminal and positive (+) speaker wire on the inside terminal.



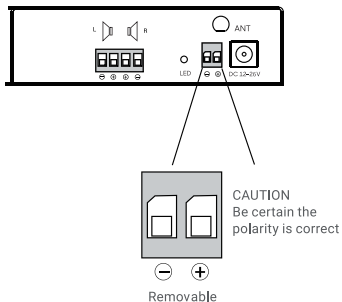
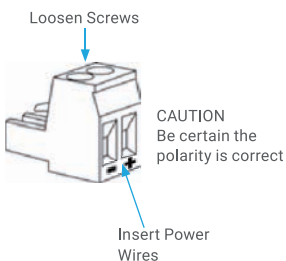
### Power Connection

Option 1: Users can connect to the power supply with power adapter included in the accessories.



Option 2: Power Wire Connection. Locate the power connector, loosen the screws, insert the power wires, tighten each screw. Note: Left negative (-), Right positive (+).

Note: The standard power input is 24V/3.3A.



## Step 4 APP download

- To use your wireless amplifier, please download iEAST Play App from App Store or Play Store.



available in store:



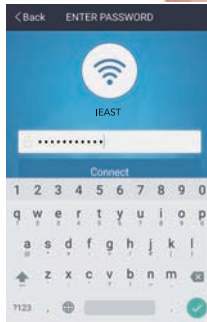


## Step 5 configure

### Option 1- WIFI

#### Wireless Connection for iOS and Android devices

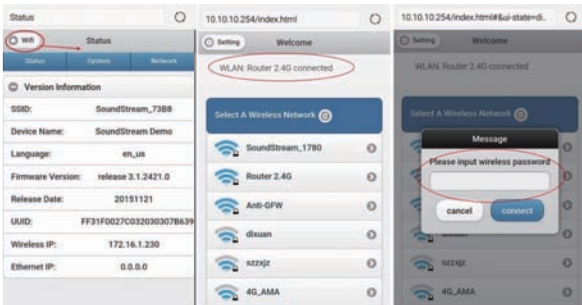
- Connect your cellphone to your home network.
- Run iEAST Play App and choose Add Device.
- Input the password of your home router in iEAST Play App.
- Press WPS button on amplifier to configure.



\*Once connected, the device will be encrypted, the password is the same as your router's. To connect more units, no need to input password.

## Option 2- web console

1. Get the device powered on
2. Choose the iEAST SSID as Wi-Fi router on your computer or mobile devices.
3. Open the browser and enter the <http://10.10.10.254>
4. Go for Wi-Fi setting->Choose your Wi-Fi router->Enter the password->Click Connect. The device will connect to the Wi-Fi router.



## Option 3- LAN

1. Connect one head of the Ethernet wire to working Wi-Fi router and the other to LAN port on the device.
  2. Open the iEAST Play app you will see the device appear in the DEVICE LIST on the app in a few seconds.
- Follow the steps to get the device encrypted: Setting->SPEAKER INFO->Device Password->Input the password as required.

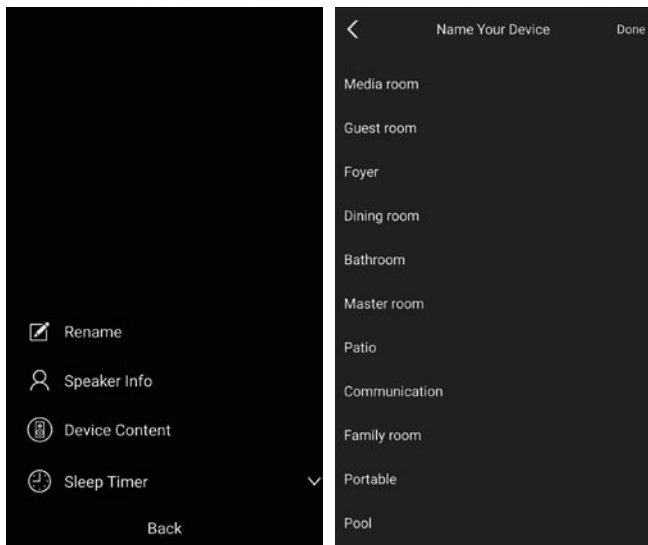
Note: Do not connect the Ethernet wire if you are connecting the amplifier to a wireless network.

## Option 4 - bluetooth

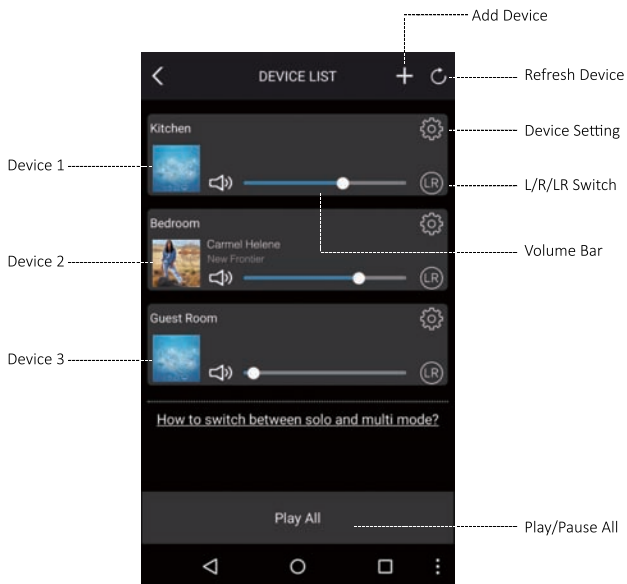
1. Open the iEAST Play app.
2. Activate the Bluetooth on the app.
3. Activate the Bluetooth on your mobile device.
4. Choose the AMP-i50B's Bluetooth to pair.

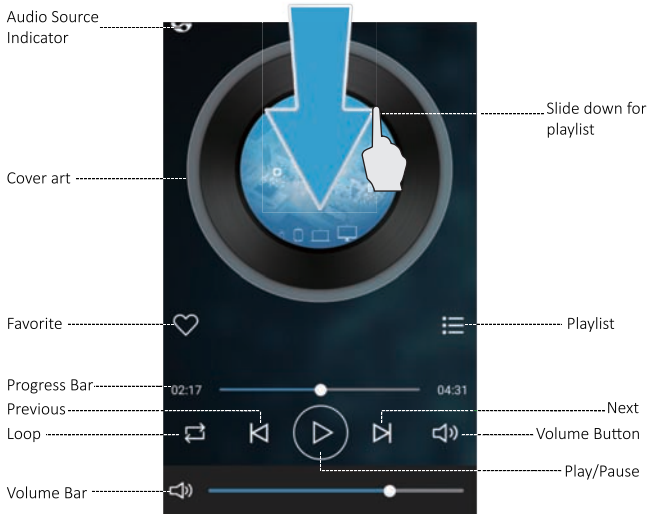
## Name Your Device

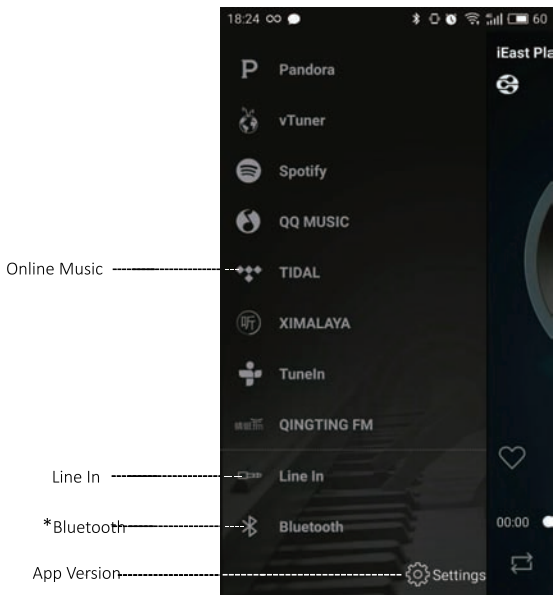
- After login, you can name your device as follows or rename your device.



# iEAST Play Application Features







- \* Apple music is only available on the Apple products via airplay.
- \* Online music service will change subject to updates.
- \*Please activate Bluetooth on the app before you pair the Bluetooth to play music.

## Multi-Room Streaming Control

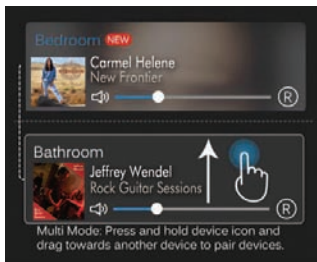
- Wireless amplifier can be set up in different groups, such as “all rooms play same song”, “two rooms play song A, three rooms play song B”, or “each room plays a different song”, etc.

- To Set up Multi-room

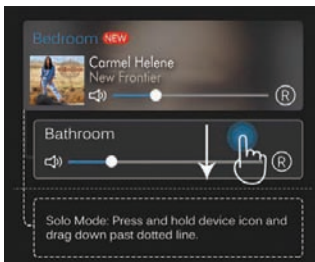
On the control panel press one device and hold, drag it above the device you would like to pair it with.

- To Remove Multi-Room:

On the control panel, press the device you want to remove and hold, then drag it to the blank space.



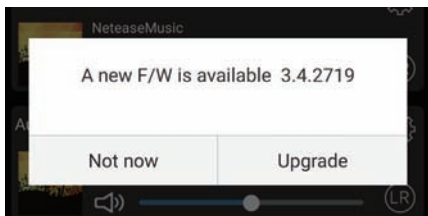
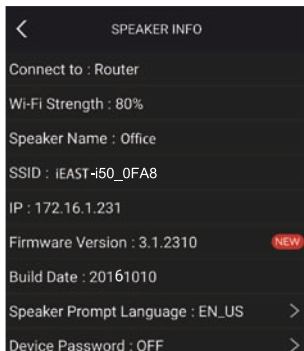
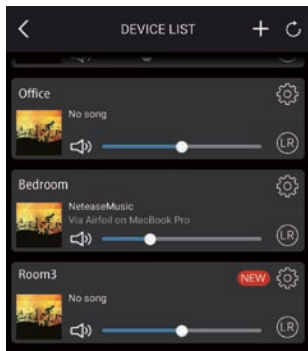
Set up Multi-room



Remove Multi-Room

## Firmware Upgrade

- OTA upgrade can be done globally as follows(for example).





## FAQ

1. Does it support Airplay and third-party DLNA apps?

Yes, it supports Airplay perfectly and third-party DLNA apps, such as BubbleUPNP, AllCast, iMediaShare...

2. Can you suggest some NAS brand which is well compatible with your device?

Qnap and Synology are suggested NAS device, open the DLNA option in setting.

3. How many rooms does the system support to group up?

Up to eight when in good wifi condition.

4. What is the distance your wireless audio system can cover?

Our system connects with your home router, you can stream your music anywhere WiFi signal covers.

5. Can it work without Internet?

Our device will also give WiFi hotspot itself. You can stream the music from your mobile device by connecting the device hotspot.

6. What it will happen when call coming in? Can I do other things when stream music?

Our system can run in the background, it will keep playing while you are having a call, and you can also do other things, like playing games.

7. Can it play high resolution music? Does it support 24bit/192khz sample rate?

Yes, our device can play APE, FLAC within normal bit rate range. It also supports decoding 24bit/192khz music files.

8. How many languages does the App have?

Currently, we have English, French, German, Spanish and will offer more by online update.

Our device will auto-detect your mobile device language and switch to it automatically.

Note: For problems not listed above, please contact our local sellers or contact [support@ieast.net](mailto:support@ieast.net)

# Technical Specifications

**Dimensions:** LxWxH=14.6x13.4x3.1cm(5.748x5.275x1.22 in)

**Weight:** 0.5kg(1.1lb)

**Connectivity:**

1.**Wireless network:** IEEE 802.11b/g/n 2.4GHz Ethernet

2.**Wired Connectivity:** Single 10/100M J-45 jack

3.**Bluetooth:** BQB Approval, BT 4.0.

**Serial port:** RS232

**Frequency Response:** 20Hz to 20KHz.

**Power Input:** 24V/3.3A

**Audio Source Input:** USB2.0, Micro SD/TF card,

**Music File Formats:** MP3/AAC/AAC+/ALAC/FLAC/APE/WAV(Decoding supports up to 24bit/192kHz)

## Warning

This equipment has been tested and found to comply with the limits for a Class B digital device, pursuant to part 15 of the FCC Rules. These limits are designed to provide reasonable protection against harmful interference in a residential installation. This equipment generates uses and can radiate radio frequency energy and, if not installed and used in accordance with the instructions, may cause harmful interference to radio communications. However, there is no guarantee that interference will not occur in a particular installation. If this equipment does cause harmful interference to radio or television reception, which can be determined by turning the equipment off and on, the user is encouraged to try to correct the interference by one or more of the following measures:

- Reorient or relocate the receiving antenna.
- Increase the separation between the equipment and receiver.
- Connect the equipment into an outlet on a circuit different from that to which the receiver is connected.
- Consult the dealer or an experienced radio/TV technician for help.



**© Copyright 2017 by iEAST. All Rights Reserved.**

The information contained in this manual is believed to be accurate and reliable. iEAST assumes no responsibility for any errors contained in this manual. iEAST reserves the right to make changes in the specifications and/or design of the above mentioned product without prior notice. The diagrams contained in this manual may also not fully represent the product that you are using and they are for illustration purposes only. iEAST assumes no responsibility for any differences between the product mentioned in this manual and the product you may have.

#### FCC Warning

This device complies with Part 15 of the FCC Rules. Operation is subject to the following two conditions

- (1) this device may not cause harmful interference, and
- (2) this device must accept any interference received, including interference that may cause undesired operation. Changes or modifications not expressly approved by the party responsible for compliance could void the user's authority to operate the equipment.

Note 1: This equipment has been tested and found to comply with the limits for a Class B digital device, pursuant to part 15 of the FCC Rules. These limits are designed to provide reasonable protection against harmful interference in a residential installation. This equipment generates, uses and can radiate radio frequency energy and, if not installed and used in accordance with the instructions, may cause harmful interference to radio communications. However, there is no guarantee that interference will not occur in a particular installation. If this equipment does cause harmful interference to radio or television reception, which can be determined by turning the equipment off and on, the user is encouraged to try to correct the interference by one or more of the following measures:

- Reorient or relocate the receiving antenna.
- Increase the separation between the equipment and receiver.
- Connect the equipment into an outlet on a circuit different from that to which the receiver is connected.
- Consult the dealer or an experienced radio/TV technician for help.

Note 2: 1.Changes or modifications to this unit not expressly approved by the party responsible for compliance could void the user's authority to operate the equipment.

2. The minimum separation generally be used is at least 20 cm.