



iEAST

4 ZONE STREAMER-M400

Quick Start Guide V 1.0
Wireless Multi-room Audio System
www.ieast.net

Introduction

iEAST sound streamers are innovative and dedicated wireless streamers, which are able to turn your current speakers, soundbars and home theatre speakers into a Wireless Multi-Room Sound System by connecting to your home WiFi Network. The specialized iOS and Android App offers the easiest and best user-friendly experience for music streaming and multi-room sound system set up.

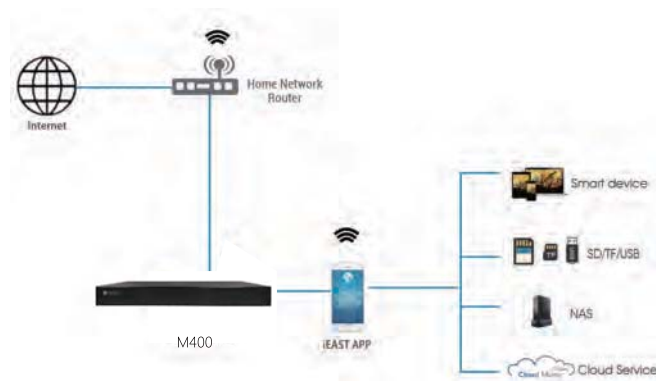
iEAST streamers also provide the most powerful playback options, which allow you to stream synchronized music or multiple kinds of music from your cellphone, online music services or your home media center with awesome sound quality in multiple rooms.

Contents



- Main unit M400 x1
- Power cord x1
- 2x2RCA cable x4
- KM3*6mm black screw x8
- Rack ear x2
- Quick Start Guide x1

How It Works



Installation Guide

Step 1 Unpack

Verify all the accessories are included in the package.

Step2 Place

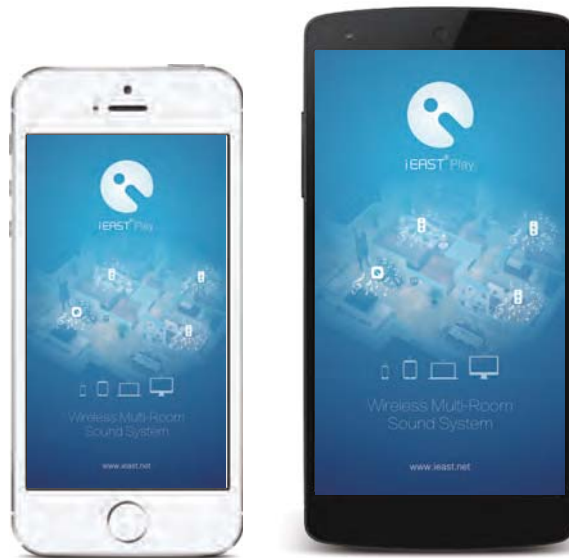
Place the streamer to a safe and proper location.

Step3 Connect

Power connection: Get the device powered on with the power adaptor and power cable included in the accessories. Audio input/output connection to proper device.

Step 4 APP download

- To use your wireless Stream Pro, please download iEAST Play App from App Store or Play Store.



available in store:

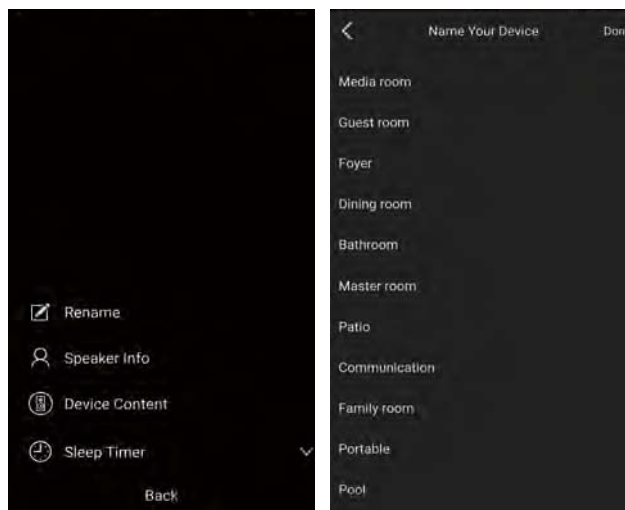


Step 5 LAN configuration

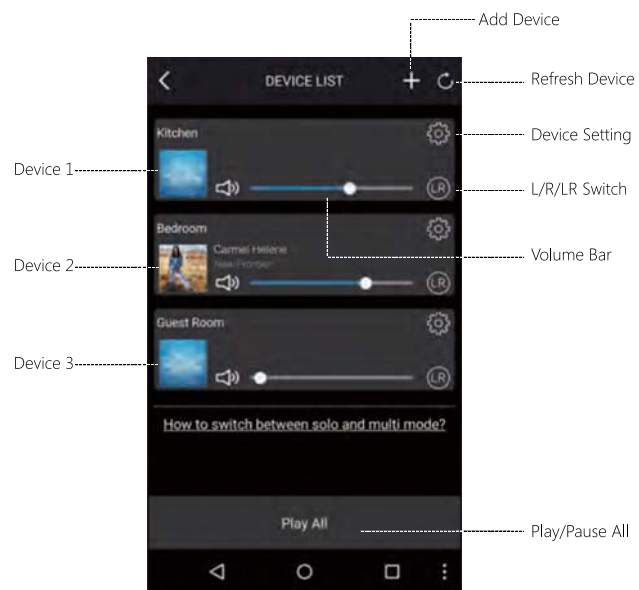
1. Connect one head of the Ethernet wire to working Wi-Fi router and the other to LAN port on the device.
2. Open the iEAST Play app you will see the device appear in the DEVICE LIST on the app in a few seconds. Follow the steps to get the device encrypted: Setting->SPEAKER INFO->Device Password->Input the password as required.

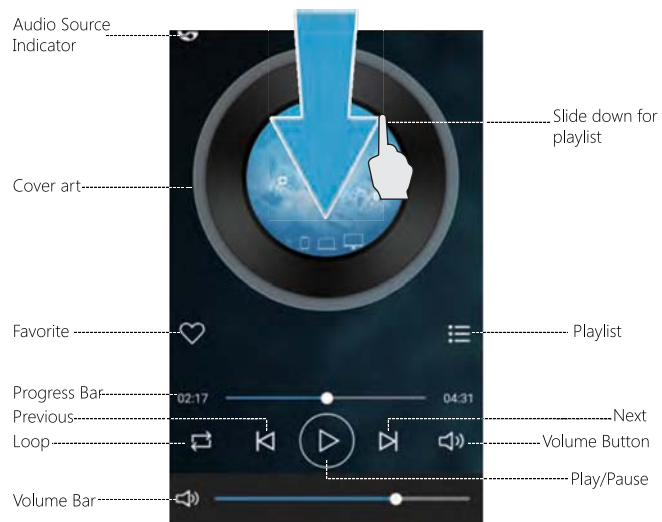
Name Your Device

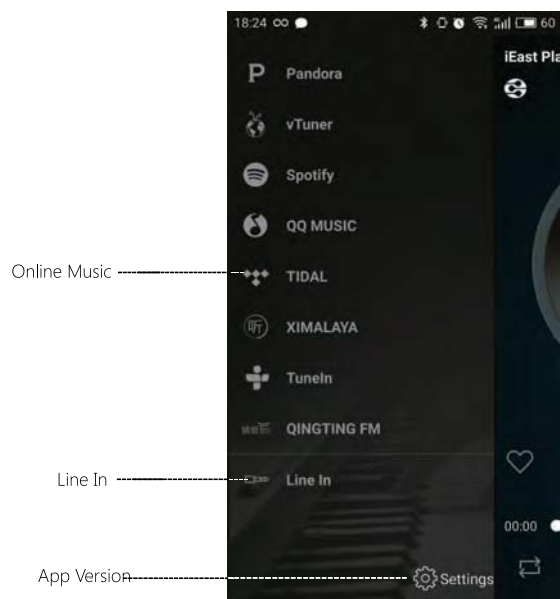
- After login, you can name your device as follows or rename your device.



iEAST Play Application Features







* Apple music is only available on the Apple products via airplay.

* Online music service will change subject to updates.

Multi-Room Streaming Control

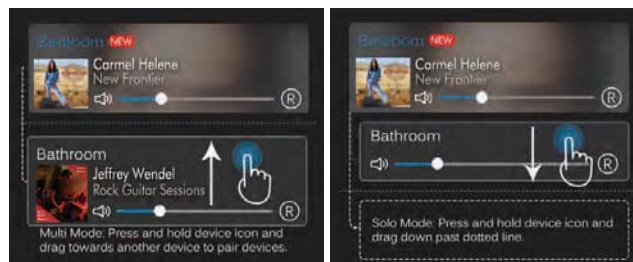
- Wireless Streamers can be set up in different groups, such as "all rooms play same song", "two rooms play song A, three rooms play song B", or "each room plays a different song", etc.

- To Set up Multi-room

On the control panel press one device and hold, drag it above the device you would like to pair it with.

- To Remove Multi-Room

On the control panel, press the device you want to remove and hold, then drag it to the blank space.

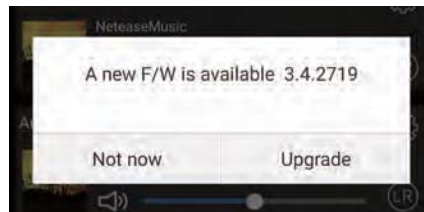
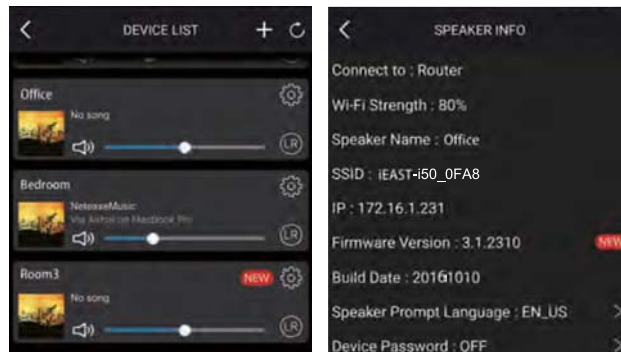


Set up Multi-room

Remove Multi-Room

Firmware Upgrade

- OTA upgrade can be done globally as follows(for example).



FAQ

1. Does it support Airplay and third-party DLNA apps?

Yes, it supports Airplay perfectly and third-party DLNA apps, such as BubbleUPNP, AllCast, iMediaShare...

2. Can you suggest some NAS brand which is well compatible with your device?

Qnap and Synology are suggested NAS device, open the DLNA option in setting.

3. How many rooms does the system support to group up?

Up to eight when in good wifi condition.

4. What is the distance your wireless audio system can cover?

Our system connects with your home router, you can stream your music anywhere WiFi signal covers.

5. Can it work without Internet?

Our device will also give WiFi hotspot itself. You can stream the music from your mobile device by connecting the device hotspot.

6. What will happen when call coming in? Can I do other things when stream music?

Our system can run in the background, it will keep playing while you are having a call, and you can also do other things, like playing games.

7. Can it play high resolution music? Does it support 24bit/192khz sample rate?

Yes, our device can play APE, FLAC within normal bit rate range. It also supports decoding 24bit/192khz music files.

8. How many languages does the App have?

Currently, we have English, French, German, Spanish and will offer more by online update.

Our device will auto-detect your mobile device language and switch to it automatically .

Note: For problems not listed above, please contact our local sellers or contact support@ieast.net

Technical parameters

Power input: AC 85V ~265V

Operation temperature: -5 °C ~50 °C

Operation humidity: 5%~95%

Input:

1-Four 2x2RCA analog input

2-Four USB supporting USB flash drive and hard drive disk

Output:

1-Four 2x2RCA analog output

2-Digital-four coaxial and four SPDIF

Dimensions:425mmx206mmx52mm

Weight: 1.9KG

Audio format supported:

MP3/AAC+ALAC/FLAC/APE/WAV



© Copyright 2018 by iEAST. All Rights Reserved.

The information contained in this manual is believed to be accurate and reliable. iEAST assumes no responsibility for any errors contained in this manual. iEAST reserves the right to make changes in the specifications and/or design of the above mentioned product without prior notice. The diagrams contained in this manual may also not fully represent the product that you are using and they are for illustration purposes only. iEAST assumes no responsibility for any differences between the product mentioned in this manual and the product you may have.

FCC Warning

This device complies with Part 15 of the FCC Rules. Operation is subject to the following two conditions

- (1) this device may not cause harmful interference, and
- (2) this device must accept any interference received, including interference that may cause undesired operation. Changes or modifications not expressly approved by the party responsible for compliance could void the user's authority to operate the equipment.

Note 1: This equipment has been tested and found to comply with the limits for a Class B digital device, pursuant to part 15 of the FCC Rules. These limits are designed to provide reasonable protection against harmful interference in a residential installation. This equipment generates, uses and can radiate radio frequency energy and, if not installed and used in accordance with the instructions, may cause harmful interference to radio communications. However, there is no guarantee that interference will not occur in a particular installation. If this equipment does cause harmful interference to radio or television reception, which can be determined by turning the equipment off and on, the user is encouraged to try to correct the interference by one or more of the following measures:

- Reorient or relocate the receiving antenna.
- Increase the separation between the equipment and receiver.
- Connect the equipment into an outlet on a circuit different from that to which the receiver is connected.
- Consult the dealer or an experienced radio/TV technician for help.

Note 2: 1.Changes or modifications to this unit not expressly approved by the party responsible for compliance could void the user's authority to operate the equipment.

2. The minimum separation generally be used is at least 20 cm.