



SABRE
HIFI



iEAST

Stream/Stream Pro

Quick Start Guide

Wireless Multi-room Audio System

www.ieast.net

Introduction

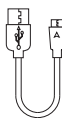
iEAST sound streamers are innovative and dedicated wireless streamers, which are able to turn your current speakers, soundbars and home theatre speakers into a Wireless Multi-Room Sound System by connecting to your home WiFi Network. The specialized iOS and Android App offers the easiest and best user-friendly experience for music streaming and multi-room sound system set up.

iEAST streamers also provide the most powerful playback options, which allow you to stream synchronized music or multiple kinds of music from your cellphone, online music services or your home media center with awesome sound quality in multiple rooms.

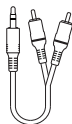
What's In The Package



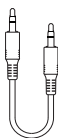
Unit x 1



USB Cable x 1



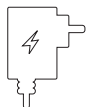
RCA Breakout Cable x 1



Line-in Cable x 1



Quick Start Guide x 1



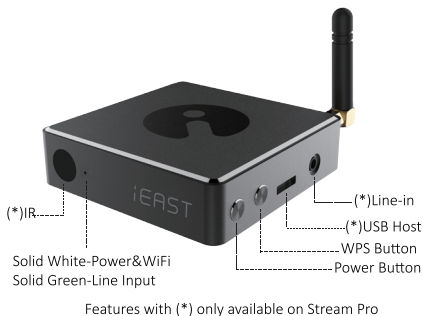
USB power
adapter x 1



(*)Infrared Remote
Controller x 1

(*) Only available on Stream Pro

Interfaces and Function



Line In: For external audio input device.

USB: To play music from USB flash driver or HDD.

WPS: Quick network connection for the device and reset.

Power: Power on/off

LED indicator : Solid White-Power&WiFi; Solid Green-Line Input

IR: To use the features on the remote controller.

LAN: To connect the device via wires.

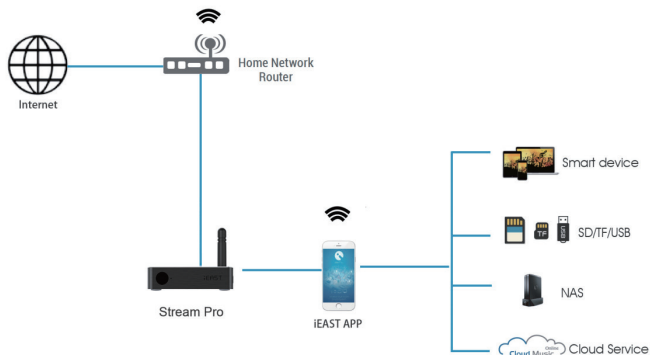
Stereo: To connect active speakers, Stream Pros etc.

SPDIF: SPDIF output.

DC: 5V-1A DC IN

WiFi Antenna: For WiFi connection.

How It Works



Installation Guide

Step 1 Unpack

Verify all the accessories are included in the package.

Step2 Place

Place the streamer to a safe and proper location.

Step3 Connect

Power connection: Get the device powered on with the power adaptor and power cable included in the accessories.

Audio output connection: Stereo output or Optical output to proper device.

Step 4 APP download

- To use your wireless Stream Pro, please download iEAST Play App from App Store or Play Store.



available in store:

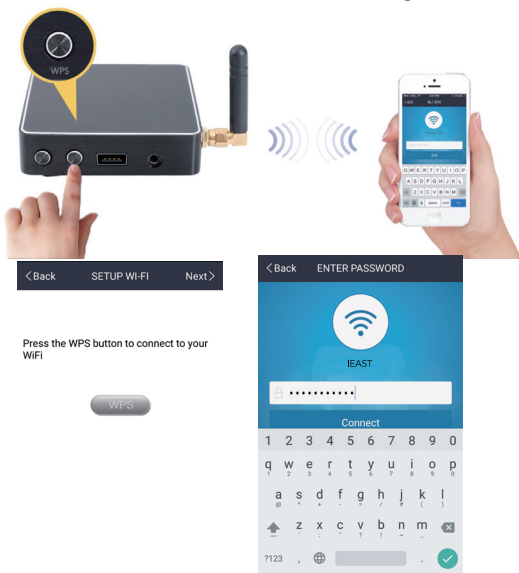


Step 5 configure

Option 1- WIFI

Wireless Connection for iOS and Android devices

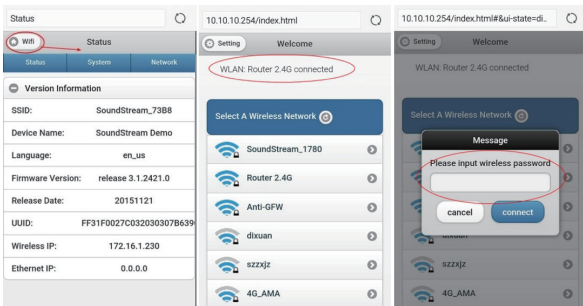
- Connect your cellphone to your home network.
- Run iEAST Play App and choose Add Device.
- Input the password of your home router in iEAST Play App.
- Press WPS button on the device to configure.



*Once connected, the device will be encrypted, the password is the same as your router's. To connect more units, no need to input password.

Option 2- web console

1. Get the device powered on
2. Choose the iEAST SSID as Wi-Fi router on your computer or mobile devices.
3. Open the browser and enter the <http://10.10.10.254>
4. Go for Wi-Fi setting->Choose your Wi-Fi router->Enter the password->Click Connect. The device will connect to the Wi-Fi router.



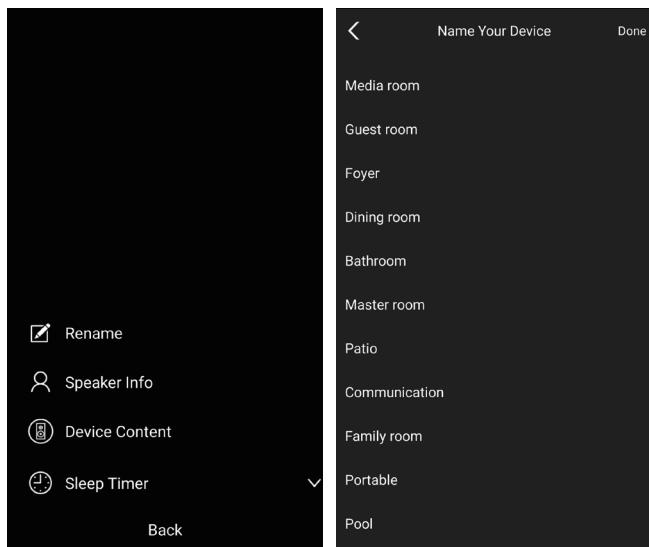
Option 3- LAN

1. Connect one head of the Ethernet wire to working Wi-Fi router and the other to LAN port on the device.
 2. Open the iEAST Play app you will see the device appear in the DEVICE LIST on the app in a few seconds.
- Follow the steps to get the device encrypted: Setting->SPEAKER INFO->Device Password->Input the password as required.

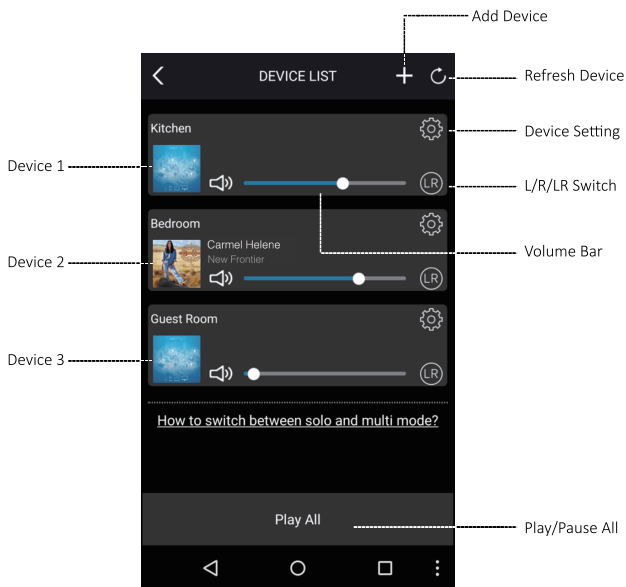
Note: Do not connect the Ethernet wire if you are connecting the device to a wireless network.

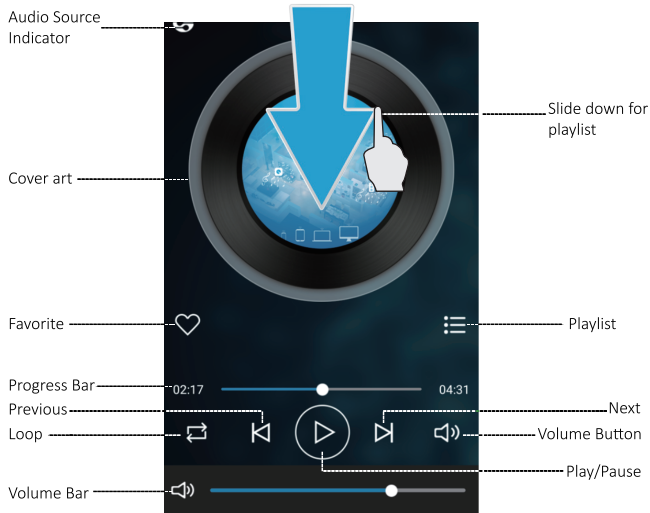
Name Your Device

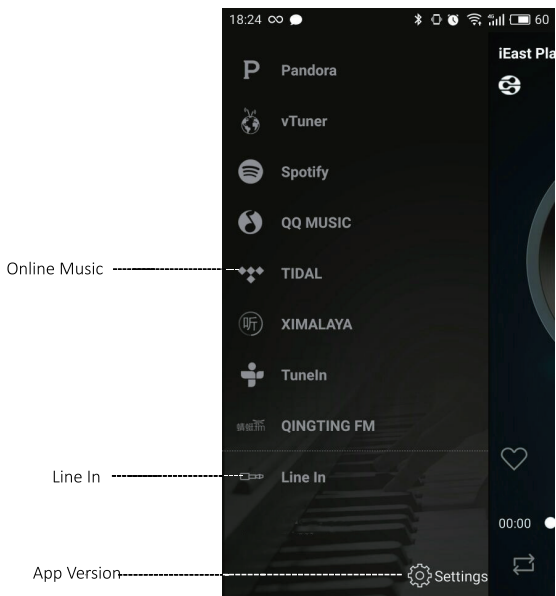
- After login, you can name your device as follows or rename your device.



iEAST Play Application Features







- * Apple music is only available on the Apple products via airplay.
- * Online music service will change subject to updates.

Multi-Room Streaming Control

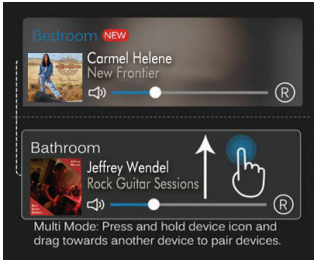
- Wireless Streamers can be set up in different groups, such as “all rooms play same song”, “two rooms play song A, three rooms play song B”, or “each room plays a different song”, etc.

- To Set up Multi-room

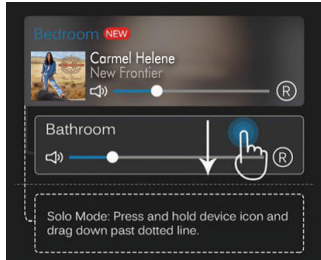
On the control panel press one device and hold, drag it above the device you would like to pair it with.

- To Remove Multi-Room

On the control panel, press the device you want to remove and hold, then drag it to the blank space.



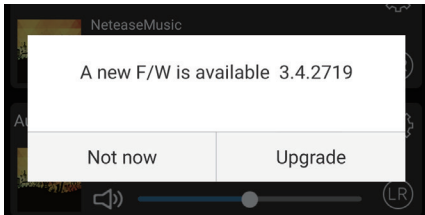
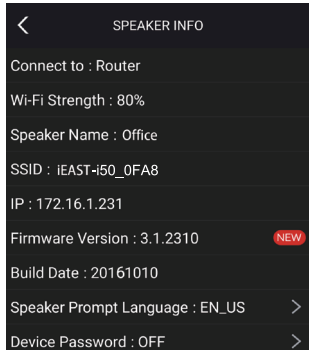
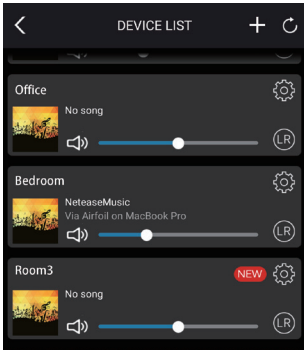
Set up Multi-room



Remove Multi-Room

Firmware Upgrade

- OTA upgrade can be done globally as follows(for example).



FAQ

1. Does it support Airplay and third-party DLNA apps?

Yes, it supports Airplay perfectly and third-party DLNA apps, such as BubbleUPNP, AllCast, iMediaShare...

2. Can you suggest some NAS brand which is well compatible with your device?

Qnap and Synology are suggested NAS device, open the DLNA option in setting.

3. How many rooms does the system support to group up?

Up to eight when in good wifi condition.

4. What is the distance your wireless audio system can cover?

Our system connects with your home router, you can stream your music anywhere WiFi signal covers.

5. Can it work without Internet?

Our device will also give WiFi hotspot itself. You can stream the music from your mobile device by connecting the device hotspot.

6. What it will happen when call coming in? Can I do other things when stream music?

Our system can run in the background, it will keep playing while you are having a call, and you can also do other things, like playing games.

7. Can it play high resolution music? Does it support 24bit/192khz sample rate?

Yes, our device can play APE, FLAC within normal bit rate range. It also supports decoding 24bit/192khz music files.

8. How many languages does the App have?

Currently, we have English, French, German, Spanish and will offer more by online update.

Our device will auto-detect your mobile device language and switch to it automatically.

Note: For problems not listed above, please contact our local sellers or contact support@ieast.net

Listen out loud with Spotify Connect

1. Connect your **iEAST Stream Pro** to your wifi network
2. Open up the Spotify app on your phone, tablet or laptop using the same wifi network
3. Play a song and select **Devices Available**.
4. Select your **iEAST Stream Pro** and start listening.

***The Spotify Software is subject to third party licenses found here:
www.spotify.com/connect/third-party-licenses**

Technical Specifications

Dimensions: LxWxH=8x8x2cm (3.15x3.15x0.79in)

Weight: 160g(0.35lb)

Connectivity:

1.**Wireless network:** IEEE 8.2.11b/g/n 2.4GHz Ethernet

2.**Wired connectivity:** Single 10/100M RJ45 jack

Frequency Response: 20Hz to 20KHz

Power Input: 5V-1A

Audio Input: USB2.0

Music File Formats: MP3/AAC+ALAC/FLAC/AOE/WAV



© Copyright 2017 by iEAST. All Rights Reserved.

The information contained in this manual is believed to be accurate and reliable. iEAST assumes no responsibility for any errors contained in this manual. iEAST reserves the right to make changes in the specifications and/or design of the above mentioned product without prior notice. The diagrams contained in this manual may also not fully represent the product that you are using and they are for illustration purposes only. iEAST assumes no responsibility for any differences between the product mentioned in this manual and the product you may have.

FCC Warning

This device complies with Part 15 of the FCC Rules. Operation is subject to the following two conditions

- (1) this device may not cause harmful interference, and
- (2) this device must accept any interference received, including interference that may cause undesired operation. Changes or modifications not expressly approved by the party responsible for compliance could void the user's authority to operate the equipment.

Note 1: This equipment has been tested and found to comply with the limits for a Class B digital device, pursuant to part 15 of the FCC Rules. These limits are designed to provide reasonable protection against harmful interference in a residential installation. This equipment generates, uses and can radiate radio frequency energy and, if not installed and used in accordance with the instructions, may cause harmful interference to radio communications. However, there is no guarantee that interference will not occur in a particular installation. If this equipment does cause harmful interference to radio or television reception, which can be determined by turning the equipment off and on, the user is encouraged to try to correct the interference by one or more of the following measures:

- Reorient or relocate the receiving antenna.
- Increase the separation between the equipment and receiver.
- Connect the equipment into an outlet on a circuit different from that to which the receiver is connected.
- Consult the dealer or an experienced radio/TV technician for help.

Note 2: 1.Changes or modifications to this unit not expressly approved by the party responsible for compliance could void the user's authority to operate the equipment.

2. The minimum separation generally be used is at least 20 cm.