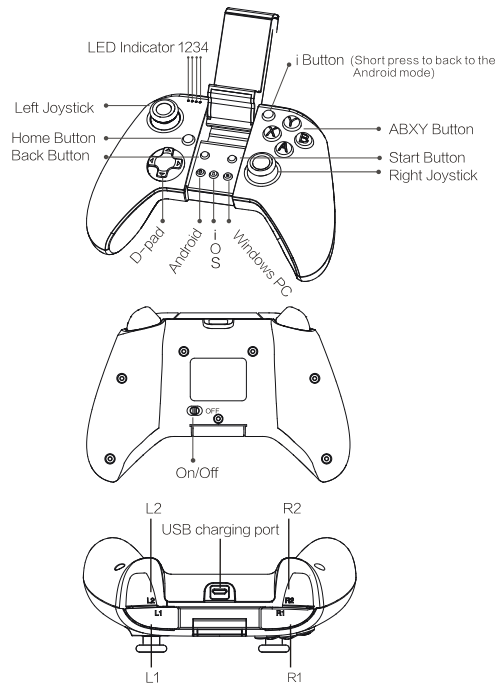


WIRELESS BLUETOOTH GAMEPAD  
MY-C04 User Manual

PRODUCT OVERVIEW:



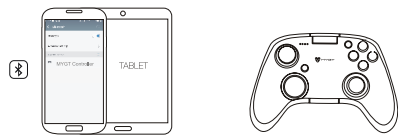
1

TURN ON & TURN OFF:

1. Turn on: Switch to ON(green), press the "HOME" button for 3 seconds.
2. Turn off: Press the "HOME" button for 3 seconds, Switch to OFF(red).



CONNECTION ON ANDROID(PHONES/TABLETS):



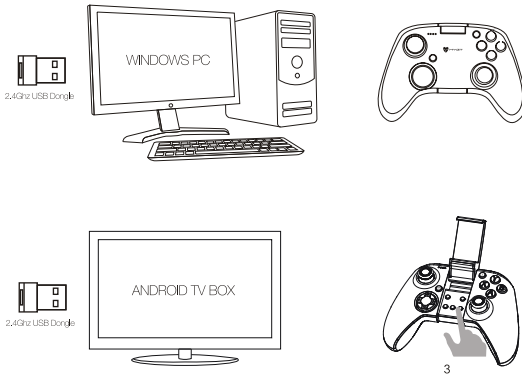
After Power on, Hold the Andriod button for 2 seconds (Figure 1), the LED indicator 1 will start flashing in blue It means that the controller is ready to be connected to your Android Tablets or Phones. To pair the controller, go to your Android devices (Figure 2)and follow the user interface flow below: Settings – turn on Bluetooth – search for new device – "MYGT CONTROLLER" will display on the screen. Click to connect via Bluetooth. If your controller is paired and connected, the LED indicator 1 light will stay on.



1

2

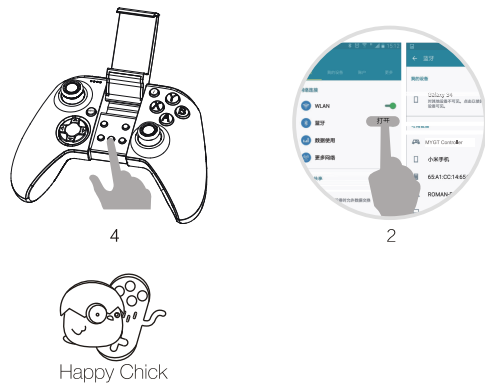
CONNECTION ON WINDOWS PC/ANDRIOD TV BOX



After power on, Insert the 2.4G USB Dongle into the USB port of your windows PC/Andriod TV Box/PS3 , Hold the windows button for 2 seconds (Figure 3), the LED indicator 3 will start flashing in white, If the controller connected, the LED indicator 3 stays on white. (IMPORTANT: Convert from D-input to X-input, press the PC button again for 3 seconds.)

3

CONNECTION ON iOS MODE:



4

2

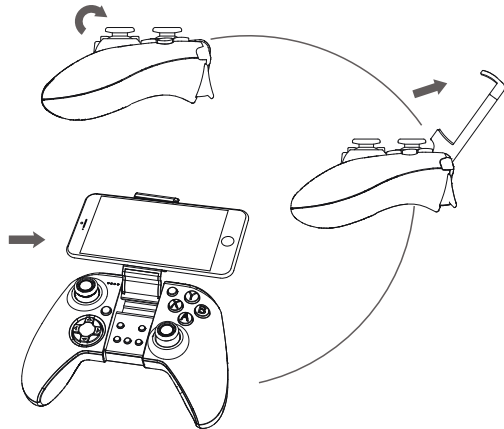
Happy Chick

After Power on, Hold the IOS button for 2 seconds (Figure 4), the LED indicator 2 will start flashing in green. It means that the controller is ready to be connected to your iPhone. To pair the controller, go to your iPhone devices (Figure 4)and follow the user interface flow below: Settings – turn on Bluetooth – search for new device – "MYGT CONTROLLER" will display on the screen. Click to connect via Bluetooth. If your controller is paired and connected, the LED indicator 2 light will stay on green. (IMPORTANT: Go to [www.xiaoj001.com](http://www.xiaoj001.com), Follow the instructions and download "Happy Chick Emulator". )

4

FIXED PHONE

Operate the bracket as follows to secure the phone to the stand.  
(Support 4-6 inch smartphone)



5

PRODUCT SPECIFICATIONS:

Size: 155 × 104 × 66mm
Connection : Bluetooth 4.0 + 2.4G connection
Bluetooth Working Distance: 10 Meter
Battery: Lithium polymer battery 3.7V/700mAh
Support platform: Android/ios/PC/PS3/Android Device (2.4G)
Working current: ≤25mA
Input Current: DC 5V=500mA

PACKAGE

MY-C04 Game Controller x1
2.4G Receiver × 1
User Manual × 1
USB Cable × 1

LED DESCRIPTION

Connection mode	LED Indicator	Status Description
Android	LED1	Flash: Wait for pairing Long Bright: the connection is successful
IOS	LED2	Flash: Wait for pairing Long Bright: the connection is successful
2.4G	LED3	Flash: Wait for pairing Long Bright: the connection is successful
Battery Indicator	LED4	Low Batt when the red LED Flash When charging red LED slow flash The LED does not light when it is fully charged

6

QUESTIONS & ANSWERS:

Q: What platform does the MYGT Game support?

A: Smart phone / tablet / TV / computer and other equipment, Bluetooth connectivity support Android 4.0 or later; iOS system; 2.4G connection support Android 4.0, Windows XP or more PC devices.

Q: What is the system compatibility requirements?

A: Android 4.0 or later or windows 7.0 or later.

Q: What happens when a Bluetooth pairing fails?

A: Try turning off the phone again or removing the paired device, re-searching for the pairing.

Q: A game can not use our gamepad how to do?

1. Make sure that the connection mode of the gamepad matches the device.
- 2.Download and install the gamesir simulator APP (Android or iOS), from the game room to download the appropriate game. (mentioned on page2)

Q: 2.4G indicator light slow flash, how to do even after the failure?

A: Switch to 2.4G mode, long press the START button until the light flash, you can clear the last pair and pairing again.

Q: Why the gamepad does not vibrate?

A: Check out whether the game support vibration, if the game support vibration, please check whether the vibration function is started in the game settings.

Q: What should i do when the gamepad can not be turned on or frozen?

A: When the gamepad can not be turned on or frozen, if the gamepad is not out of battery, you can make the factory reset settings for the gamepad. There is a small reset hole at the back of the gamepad, pressing the reset hole using a needle for 1 second to reset the gamepad. Then turn on your controller again.

PRODUCTS ARE TOXIC AND HAZARDOUS SUBSTANCES

Parts	Hazardous substance					
	lead (Pb)	mercury (Hg)	cadmium (Cd)	Hexavalent chromium (Cr(VI))	Polybrominated biphenyls(PBB)	Polybrominated diphenyl ether(PBDE)
Casing	○	○	○	○	○	○
Electronic group	x	○	○	○	○	○
Accessory	○	○	○	○	○	○

This form is prepared in accordance with SJ / T 11364.  
○: Indicates that the content of the hazardous substance in all homogeneous materials of the part is under the limit specified in GB / T 26572.  
X: Indicating that the total content of the hazardous material at least in the part of a homogeneous material of the part exceeds the limit requirement specified in GB / T 26572.

8

ShenZhen MYGT Co.,Ltd

Factory Add: D3,TongFuYu Industrial Area,Shatou Village,ShaJin,BaoAn,ShenZhen,China  
Company Add: 27Floor,Block B,DaChong Business Center,NanShan,ShenZhen,China  
Tel: (86) 755-33895959 / 26406799 Fax: (86) 755-33876501  
Web: <http://www.szmygt.com>

## **FCC Statement**

This equipment has been tested and found to comply with the limits for a Class B digital device, pursuant to Part 15 of the FCC Rules. These limits are designed to provide reasonable protection against harmful interference in a residential installation. This equipment generates uses and can radiate radio frequency energy and, if not installed and used in accordance with the instructions, may cause harmful interference to radio communications. However, there is no guarantee that interference will not occur in a particular installation. If this equipment does cause harmful interference to radio or television reception, which can be determined by turning the equipment off and on, the user is encouraged to try to correct the interference by one or more of the following measures:

- Reorient or relocate the receiving antenna.
- Increase the separation between the equipment and receiver.
- Connect the equipment into an outlet on a circuit different from that to which the receiver is connected.
- Consult the dealer or an experienced radio/TV technician for help.

This device complies with part 15 of the FCC Rules. Operation is subject to the following two conditions: (1) This device may not cause harmful interference, and (2) this device must accept any interference received, including interference that may cause undesired operation.

Changes or modifications not expressly approved by the party responsible for compliance could void the user's authority to operate the equipment.