

75\*85mm

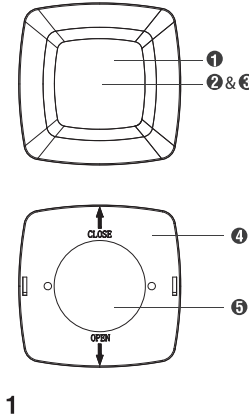


# LED Puck Light Instruction Manual

Thank you for your purchase.  
Please contact us if you have any problem.  
Email: [dewenwils@hotmail.com](mailto:dewenwils@hotmail.com)  
Please attach your User Name or Order ID so that we can help you better.

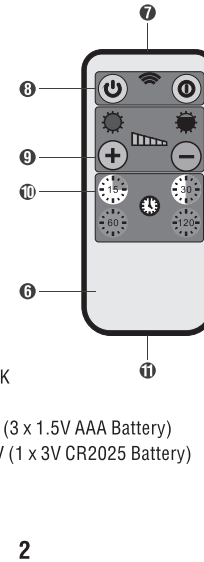
## Product Introduction

- 3 Super Bright SMD LEDs
- Diffused Lens
- On/Off Tap Lens
- Battery Compartment
- Mounting Bracket
- Remote Control
- Signal Transmitter
- ON/OFF Switch
- Dimmer
- Timer
- Battery Compartment



## Specifications

- Lumens: 45LM
- Color Temperature: 3000K
- Wattage: 0.6W
- Voltage of Light: DC 4.5V (3 x 1.5V AAA Battery)
- Voltage of Remote: DC 3V (1 x 3V CR2025 Battery)
- Operating Range: 100FT
- Lifespan: 30000 Hours



## Functions

### A. ON/OFF Operation

- Press lens once to turn the light ON.
- Press lens again to turn the light OFF.

### B. Remote Control Operation

#### NOTE:

- Please remove the protective plastic inside of the Battery Compartment (11) before first use. Battery already installed.

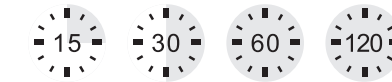
- The RF Remote Control operates within the range of 100ft without obstacles

### POWER

- ☰ Turn the Light ON.
- ☯ Turn the Light OFF.

### DIMMER

- ⊕ Press and hold (+) to increase brightness.
- ⊖ Press and hold (-) to decrease brightness.



### TIMER

- Turn the Light ON first, select duration (15, 30, 60 and 120 minutes). Light will flash once to confirm command.
- Timer eliminated when light Auto Off or turn OFF manually.

### ADDING PUCK LIGHTS TO A SET

Multiple puck lights which placed within the signal receiving range can be controlled by one remote control. No programming is needed.

### C. Memory Feature

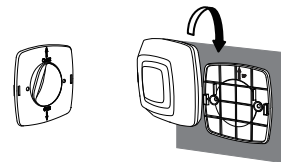
Remember the desired brightness you set last time when light turned on again.

## Installation Instructions

### NOTE:

- Follow the direction as UP arrow inside of the Mounting Bracket (5) indicates if you fix the puck light vertically. Upside down may cause the light to drop down.

### Method 1: Stick-on by Double-sided Tape

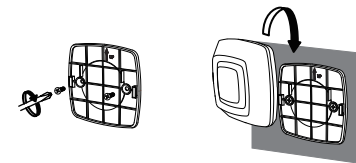


1. Make sure the desired location is dry, clean and smooth.
2. Stick on the puck light with double-sided tape tightly.

5

## Installation Instructions

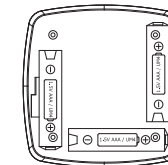
### Method 2: Mounting by Screws



1. Remove the Mounting Bracket by pushing to the direction with OPEN arrow.
2. Place the Mounting Bracket at the desired position and fix it with screws securely.
3. Insert the claws of the bracket into the slots of the puck light. Be sure to make their edges align.

6

## Battery Installations



### NOTE:

- Use only the specified size and type of batteries.
- Be sure to follow the correct polarity as indicated in the battery slots when installing the batteries. Reversed batteries may cause damage to the device.
- Do not mix alkaline, standard (Carbon-Zinc), or rechargeable (Nickel Cadmium) batteries.
- Replace all batteries of a set at the same time. Do not mix old and new batteries.
- Remove batteries if consumed or if product is to be left unused for an extended period of time.
- Used batteries should be disposed safely and environmentally.
- If the brightness level appears to be dim once the puck light turned on, please replace the batteries by sliding the puck light off the Mounting Bracket.

7

## FCC Statement

This equipment has been tested and found to comply with the limits for Part 15 of the FCC rules. These limits are designed to provide reasonable protection against harmful interference in a residential installation. This equipment generates, uses and can radiate radio frequency energy and, if not installed and used in accordance with the instructions, may cause harmful interference to radio communications.

However, there is no guarantee that interference will not occur in a particular installation. If this equipment does cause harmful interference to radio or television reception, which can be determined by turning the equipment off and on, the user is encouraged to try to correct the interference by one or more of the following measures:

- Reorient or relocate the receiving antenna.
- Increase the separation between the equipment and receiver.
- Connect the equipment to an outlet on a circuit different from that to which the receiver is connected.

8

This device complies with part 15 of the FCC rules. Operation is subject to the following two conditions:

- (1) This device may not cause harmful interference, and (2) this device must accept any interference received, including interference that may cause undesired operation.

Note: Modifications to this product will void the user's authority to operate this equipment.

## One-year Limited Warranty

Dewenwils warrants this product to be free from defects in material and workmanship for a period of one year from the date of purchase. Warranty will be void if damage is due to misuse or improper installation. Please contact us if you have any questions.

Email: [dewenwils@hotmail.com](mailto:dewenwils@hotmail.com)

9

75\*85mm