

Appendix A: SAR System performance Check Plots

Table of contents

System Performance Check-D2450

System Performance Check-D5200

System Performance Check-D5800

Test Laboratory: CTI SAR Lab

Systemcheck 2450-Head

DUT: D2450V2 - SN959; Type: D2450V2; Serial: SN959

Communication System: UID 0, CW (0); Communication System Band: D2450 (2450.0 MHz); Frequency: 2450 MHz; Duty Cycle: 1:1

Medium parameters used: $f = 2450$ MHz; $\sigma = 1.86$ S/m; $\epsilon_r = 38.792$; $\rho = 1000$ kg/m³

Phantom section: Flat Section

DASY Configuration:

- Probe: EX3DV4 - SN7328; ConvF(7.67, 7.67, 7.67); Calibrated: 2/3/2021;
- Sensor-Surface: 1.4mm (Mechanical Surface Detection), $z = 1.0, 31.0$
- Electronics: DAE4 Sn1458; Calibrated: 1/8/2021
- Phantom: ELI v6.0; Type: QDOVA003AA; Serial: 2024
- DASY52 52.8.8(1222); SEMCAD X 14.6.10(7331)

Configuration/d=10mm,Pin=250mW/Area Scan (10x10x1): Measurement grid: $dx=12$ mm, $dy=12$ mm

Maximum value of SAR (measured) = 19.4 W/kg

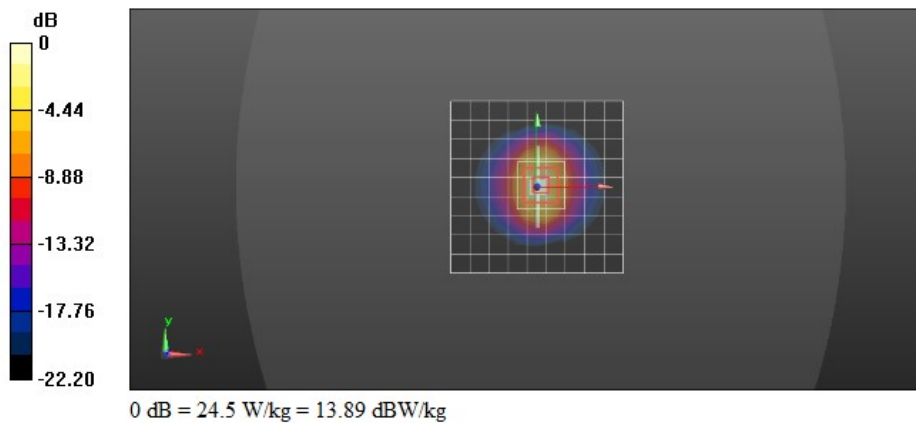
Configuration/d=10mm,Pin=250mW/Zoom Scan (7x7x7)/Cube 0: Measurement grid: $dx=5$ mm, $dy=5$ mm, $dz=5$ mm

Reference Value = 116.8 V/m; Power Drift = 0.08 dB

Peak SAR (extrapolated) = 30.8 W/kg

SAR(1 g) = 14.3 W/kg; SAR(10 g) = 6.68 W/kg

Maximum value of SAR (measured) = 24.5 W/kg



Test Laboratory: CTI SAR Lab

Systemcheck 2450-Head

DUT: D2450V2 - SN959; Type: D2450V2; Serial: SN959

Communication System: UID 0, CW (0); Communication System Band: D2450 (2450.0 MHz); Frequency: 2450 MHz; Duty Cycle: 1:1

Medium parameters used: $f = 2450$ MHz; $\sigma = 1.846$ S/m; $\epsilon_r = 38.791$; $\rho = 1000$ kg/m³

Phantom section: Flat Section

DASY Configuration:

- Probe: EX3DV4 - SN7328; ConvF(7.67, 7.67, 7.67); Calibrated: 2/3/2021;
- Sensor-Surface: 1.4mm (Mechanical Surface Detection), $z = 1.0, 31.0$
- Electronics: DAE4 Sn1458; Calibrated: 1/8/2021
- Phantom: ELI v6.0; Type: QDOVA003AA; Serial: 2024
- DASY52 52.8.8(1222); SEMCAD X 14.6.10(7331)

Configuration/d=10mm,Pin=250mW/Area Scan (10x10x1): Measurement grid: $dx=12$ mm, $dy=12$ mm

Maximum value of SAR (measured) = 15.4 W/kg

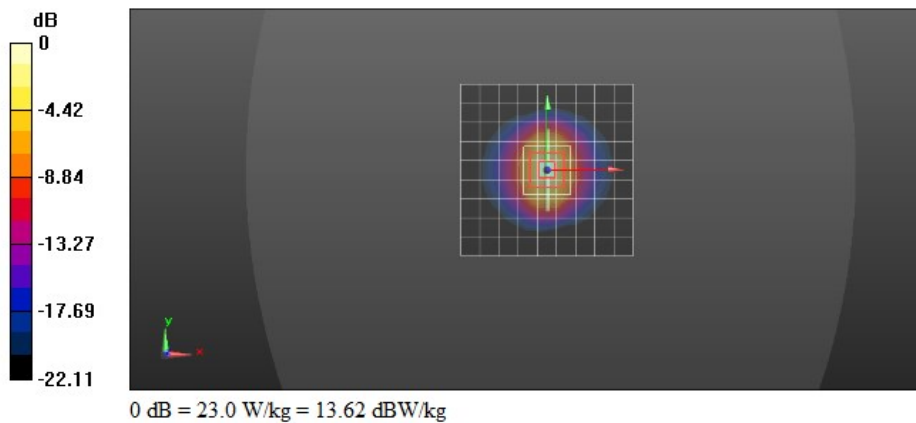
Configuration/d=10mm,Pin=250mW/Zoom Scan (7x7x7)/Cube 0: Measurement grid: $dx=5$ mm, $dy=5$ mm, $dz=5$ mm

Reference Value = 116.1 V/m; Power Drift = 0.19 dB

Peak SAR (extrapolated) = 29.0 W/kg

SAR(1 g) = 13.5 W/kg; SAR(10 g) = 6.27 W/kg

Maximum value of SAR (measured) = 23.0 W/kg



Test Laboratory: CTI SAR Lab

Systemcheck 2450-Head**DUT: D2450V2 - SN959; Type: D2450V2; Serial: SN959**

Communication System: UID 0, CW (0); Communication System Band: D2450 (2450.0 MHz); Frequency: 2450 MHz; Duty Cycle: 1:1

Medium parameters used: $f = 2450$ MHz; $\sigma = 1.869$ S/m; $\epsilon_r = 39.182$; $\rho = 1000$ kg/m³

Phantom section: Flat Section

DASY Configuration:

- Probe: EX3DV4 - SN7328; ConvF(7.67, 7.67, 7.67); Calibrated: 2/3/2021;
- Sensor-Surface: 1.4mm (Mechanical Surface Detection), $z = 1.0, 31.0$
- Electronics: DAE4 Sn1458; Calibrated: 1/8/2021
- Phantom: ELI v6.0; Type: QDOVA003AA; Serial: 2024
- DASY52 52.8.8(1222); SEMCAD X 14.6.10(7331)

Configuration/d=10mm,Pin=250mW/Area Scan (10x10x1): Measurement grid: $dx=12$ mm, $dy=12$ mm

Maximum value of SAR (measured) = 21.7 W/kg

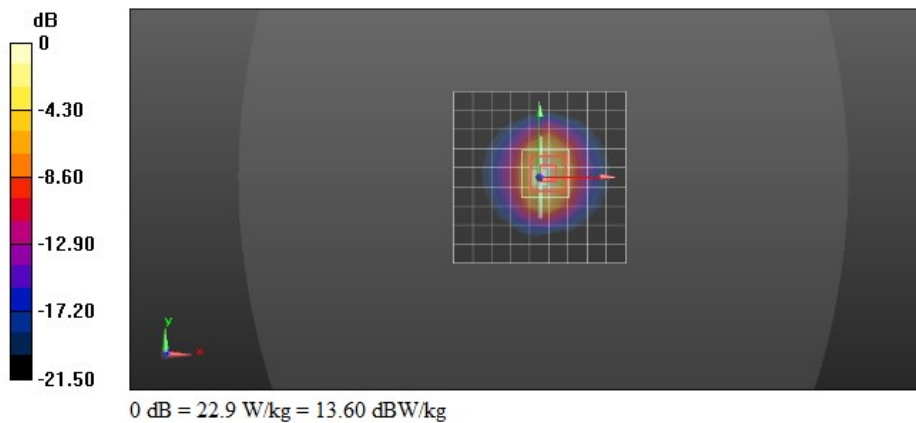
Configuration/d=10mm,Pin=250mW/Zoom Scan (7x7x7)/Cube 0: Measurement grid: $dx=5$ mm, $dy=5$ mm, $dz=5$ mm

Reference Value = 109.7 V/m; Power Drift = -0.85 dB

Peak SAR (extrapolated) = 29.2 W/kg

SAR(1 g) = 13.6 W/kg; SAR(10 g) = 6.36 W/kg

Maximum value of SAR (measured) = 22.9 W/kg



Test Laboratory: CTI SAR Lab

Systemcheck 5200-Head**DUT: D5GHzV2 - SN1208; Type: D5GHzV2; Serial: SN1208**

Communication System: UID 0, CW (0); Communication System Band: D5GHz (5000.0 - 6000.0 MHz); Frequency: 5200 MHz; Duty Cycle: 1:1

Medium parameters used: $f = 5200$ MHz; $\sigma = 4.601$ S/m; $\epsilon_r = 36.227$; $\rho = 1000$ kg/m³

Phantom section: Flat Section

DASY Configuration:

- Probe: EX3DV4 - SN7328; ConvF(5.44, 5.44, 5.44); Calibrated: 2/3/2021;
- Sensor-Surface: 1.4mm (Mechanical Surface Detection), $z = 1.0, 23.0$
- Electronics: DAE4 Sn1458; Calibrated: 1/8/2021
- Phantom: ELI v6.0; Type: QDOVA003AA; Serial: 2024
- DASY52 52.8.8(1222); SEMCAD X 14.6.10(7331)

Configuration/d=10mm,Pin=100mW/Area Scan (11x11x1): Measurement grid: $dx=10$ mm, $dy=10$ mm

Maximum value of SAR (measured) = 16.0 W/kg

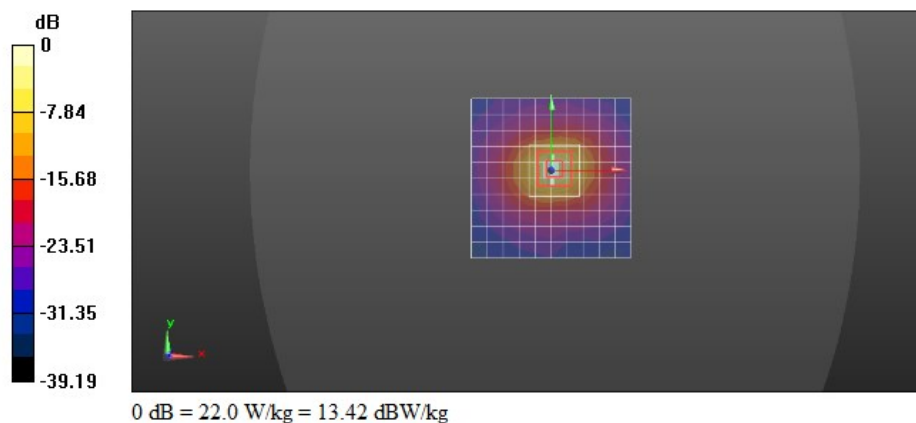
Configuration/d=10mm,Pin=100mW/Zoom Scan (9x9x12)/Cube 0: Measurement grid: $dx=4$ mm, $dy=4$ mm, $dz=2$ mm

Reference Value = 44.23 V/m; Power Drift = 0.01 dB

Peak SAR (extrapolated) = 36.5 W/kg

SAR(1 g) = 8.61 W/kg; SAR(10 g) = 2.53 W/kg

Maximum value of SAR (measured) = 22.0 W/kg



Test Laboratory: CTI SAR Lab

Systemcheck 5200-Head**DUT: D5GHzV2 - SN1208; Type: D5GHzV2; Serial: SN1208**

Communication System: UID 0, CW (0); Communication System Band: D5GHz (5000.0 - 6000.0 MHz); Frequency: 5200 MHz; Duty Cycle: 1:1

Medium parameters used: $f = 5200$ MHz; $\sigma = 4.792$ S/m; $\epsilon_r = 35.548$; $\rho = 1000$ kg/m³

Phantom section: Flat Section

DASY Configuration:

- Probe: EX3DV4 - SN7328; ConvF(5.44, 5.44, 5.44); Calibrated: 2/3/2021;
- Sensor-Surface: 1.4mm (Mechanical Surface Detection), $z = 1.0, 23.0$
- Electronics: DAE4 Sn1458; Calibrated: 1/8/2021
- Phantom: ELI v6.0; Type: QDOVA003AA; Serial: 2024
- DASY52 52.8.8(1222); SEMCAD X 14.6.10(7331)

Configuration/d=10mm,Pin=100mW/Area Scan (11x11x1): Measurement grid: $dx=10$ mm, $dy=10$ mm

Maximum value of SAR (measured) = 16.4 W/kg

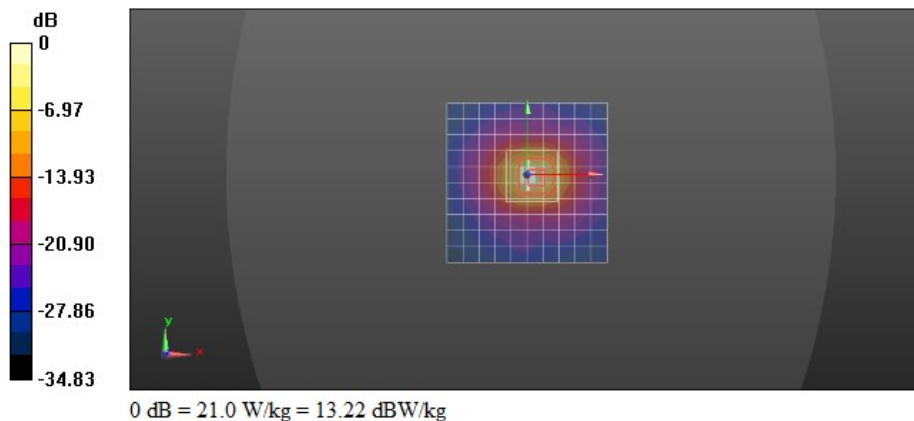
Configuration/d=10mm,Pin=100mW/Zoom Scan (9x9x12)/Cube 0: Measurement grid: $dx=4$ mm, $dy=4$ mm, $dz=2$ mm

Reference Value = 36.75 V/m; Power Drift = -0.31 dB

Peak SAR (extrapolated) = 34.6 W/kg

SAR(1 g) = 8.55 W/kg; SAR(10 g) = 2.5 W/kg

Maximum value of SAR (measured) = 21.0 W/kg



Test Laboratory: CTI SAR Lab

Systemcheck 5800-Head**DUT: D5GHzV2 - SN1208; Type: D5GHzV2; Serial: SN1208**

Communication System: UID 0, CW (0); Communication System Band: D5GHz (5000.0 - 6000.0 MHz); Frequency: 5800 MHz; Duty Cycle: 1:1

Medium parameters used: $f = 5800$ MHz; $\sigma = 5.299$ S/m; $\epsilon_r = 35.497$; $\rho = 1000$ kg/m³

Phantom section: Flat Section

DASY Configuration:

- Probe: EX3DV4 - SN7328; ConvF(4.85, 4.85, 4.85); Calibrated: 2/3/2021;
- Sensor-Surface: 1.4mm (Mechanical Surface Detection), $z = 1.0, 31.0$
- Electronics: DAE4 Sn1458; Calibrated: 1/8/2021
- Phantom: ELI v6.0; Type: QDOVA003AA; Serial: 2024
- DASY52 52.8.8(1222); SEMCAD X 14.6.10(7331)

Configuration/d=10mm,Pin=100mW/Area Scan (11x11x1): Measurement grid: $dx=10$ mm, $dy=10$ mm

Maximum value of SAR (measured) = 19.0 W/kg

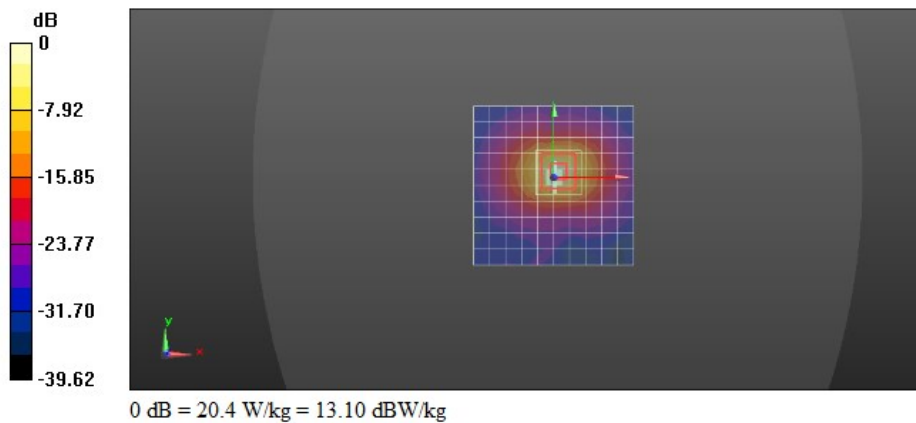
Configuration/d=10mm,Pin=100mW/Zoom Scan (8x8x16)/Cube 0: Measurement grid: $dx=4$ mm, $dy=4$ mm, $dz=2$ mm

Reference Value = 37.04 V/m; Power Drift = -0.30 dB

Peak SAR (extrapolated) = 36.7 W/kg

SAR(1 g) = 8.09 W/kg; SAR(10 g) = 2.31 W/kg

Maximum value of SAR (measured) = 20.4 W/kg



Test Laboratory: CTI SAR Lab

Systemcheck 5800-Head**DUT: D5GHzV2 - SN1208; Type: D5GHzV2; Serial: SN1208**

Communication System: UID 0, CW (0); Communication System Band: D5GHz (5000.0 - 6000.0 MHz); Frequency: 5800 MHz; Duty Cycle: 1:1

Medium parameters used: $f = 5800$ MHz; $\sigma = 5.281$ S/m; $\epsilon_r = 35.083$; $\rho = 1000$ kg/m³

Phantom section: Flat Section

DASY Configuration:

- Probe: EX3DV4 - SN7328; ConvF(4.85, 4.85, 4.85); Calibrated: 2/3/2021;
- Sensor-Surface: 1.4mm (Mechanical Surface Detection), $z = 1.0, 31.0$
- Electronics: DAE4 Sn1458; Calibrated: 1/8/2021
- Phantom: ELI v6.0; Type: QDOVA003AA; Serial: 2024
- DASY52 52.8.8(1222); SEMCAD X 14.6.10(7331)

Configuration/d=10mm,Pin=100mW/Area Scan (11x11x1): Measurement grid: $dx=10$ mm, $dy=10$ mm

Maximum value of SAR (measured) = 18.9 W/kg

Configuration/d=10mm,Pin=100mW/Zoom Scan (8x8x16)/Cube 0: Measurement grid: $dx=4$ mm, $dy=4$ mm, $dz=2$ mm

Reference Value = 41.64 V/m; Power Drift = -1.47 dB

Peak SAR (extrapolated) = 36.7 W/kg

SAR(1 g) = 8.29 W/kg; SAR(10 g) = 2.39 W/kg

Maximum value of SAR (measured) = 22.0 W/kg

