



FSR Formula Wheel

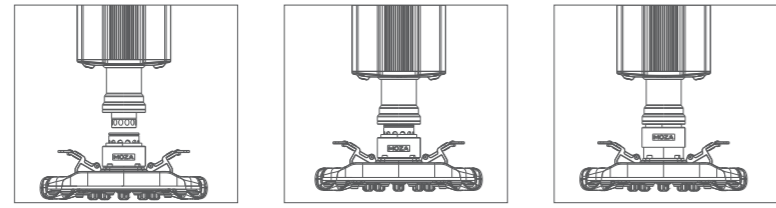


User manual 使用说明书

01 Product Introduction

- 280mm width Formula-style Wheel
• 4.3-inch HD Display
• 12+ professional Formula-style UI Interfaces
• Hand-stitched perforated leather
• High-strength carbon fiber frame and shifters
• Aluminum Alloy Back Shell
• Carbon Fiber Photoelectric Double Clutch Paddles
• Quick Release System
• Flow RGB Shift Indicator Lighting
• Can be directly connected to PC via USB (optional)
• Ergonomic Design
• 10 illuminated programmable mechanical keys
• 5 band knobs, 2 thumb knobs, 2 universal joysticks

02 Quick Release Instructions



- 1. Align the 6 steel balls on the steering wheel with the 6 grooves on the wheelbase.
2. Press the wheel into the wheelbase, keeping the balls aligned with each other.
3. The quick release will automatically snap into place, locking the wheel to the base.
4. To remove the wheel from the base, simply use two hands to pull back on the outer ring (black color) and pull the wheel out at the same time.

03 Wheel Configuration

- Using MOZA Pit House, our software suite, the FSR steering wheel can easily be set up and configured to your liking.
• Clutch Paddle Mode: Set the operation of the clutch paddles, which can be configured to act together or independently of each other, also as a button input
• Joystick Mode: Joysticks can be configured as keys or buttons
• Indicator Light Switch: Allows for switching the indicator light off, on, or specific speed settings
• Indicator Light Display Mode: Divided into two modes, toggled in the MOZA Pit House suite
• Speed Adjustment: Adjustable according to speed and the timing of the shift indicator light, with different presets available
• Brightness Adjustment: Allows for adjusting of the brightness of the shift indicator
• UI Interface Configuration: You can switch UI in the MOZA Pit House suite, or you can switch the UI on the wheel directly by pressing the lower right dual-clutch paddle while moving the joystick left or right.
• Steering Wheel Combination Key Configuration: Click on the description of the combination key in the upper right corner of the steering wheel picture, allowing for adjustments of the function.
• Indicator Light Color Adjustment: Adjust the color of the MOZA Flow shifter according to your preferences.
• Screen Brightness: Adjust the brightness of the display on the steering wheel.
• Speed Unit: Can be set to Metric or Imperial.
• Temperature Unit: Can be set to Celsius and Fahrenheit.



(For further information on specific steering wheel settings or functions using the MOZA Pit House Suite, visit our official website at www.mozaracing.com)

The steering wheel and base are already paired at the factory, and when the steering wheel is loaded into the base, it automatically connects to the base when it is powered on.

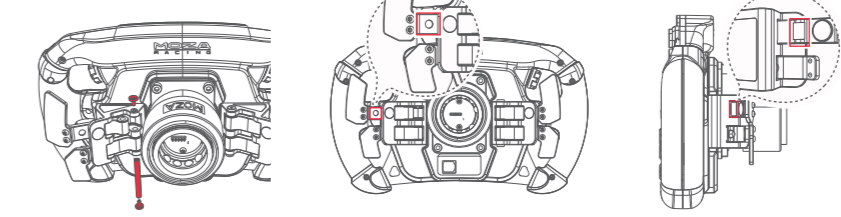
04 Key combination description



- Left clutch paddle + press the left rocker: Switching maximum steering angle of 360°
Right clutch paddle + toggle the left rocker to the left: Switching the dashboard UI to the previous UI
Left clutch paddle + press the right rocker: Switching maximum steering angle of 540°
Right clutch paddle + toggle the left rocker to the right: Switching the dashboard UI to the next UI
Left clutch paddle + press BB thumb knob: Switching maximum steering angle of 720°
Press both rockers at the same time: Switching left stick mode: cross key / normal button
Left clutch paddle + press ERS thumb knob: Switching maximum steering angle of 900°
Press both thumb knobs simultaneously: Toggle button color
Left clutch paddle + toggle the left rocker to the left: Switching the dashboard UI to the previous UI
Left clutch paddle + toggle left rocker to the right: Switching the dashboard UI to the next UI

05 Installation of Magnetic Shifter Silencers

Place the steering wheel on a flat working surface, with the front side facing down. Use a hexagonal wrench to remove the screw on the side of the trigger lever of the shift paddle; then use a wrench to carefully lift the latch from the side of the magnetic paddle (NOTE: you do not need to push it out completely, only the magnetic paddle. The trigger lever and the latch can be separated). Apply the silencer pad on the back of the magnet hole and the raised position on the back of the paddle trigger lever, as shown in the figure, finally returning the latch into place, and replacing the screw. (Please do not apply the silencer pads below the raised position of the trigger lever because this is the area of the paddle photoelectric sensor switch and a silencer pad there will affect the normal use of shifter paddles) as shown in the figure, finally return the latch into place, and tighten the screws.



06 Packing list

- 1. FSR Racing Formula Wheel 2. Tool kit: Hexagon screwdriver / Silencer Pads x4
3. Portable cloth bag

07 Product parameters

Size: 280mm standard formula wheel
Display size: 4.3 inches
Display Resolution: 800x480
Grip Material: Leather
Frame and Panel Material: 5mm thick carbon fiber
Shifter Material: 3mm thick carbon fiber
Back Shell Material: Aviation-grade Aluminum Alloy
Shift Paddles: 2
Dual-clutch Paddles: 2
Illuminated Programmable Mechanical Keys: 10
Thumb Joysticks (pressable): 2
Band knobs: 5
LED RGB Beads: 10 LED
Count (Strip): 10 LEDs
Smart Telemetry: Supported
MOZA Pit House Light Configuration: Supported
Quick Release: Supported
Signal Transmission: Wireless
Shifter Mode: Photoelectric Contactless
Dual-clutch Paddle Mode: Simultaneous / Independent Axis / Button Input

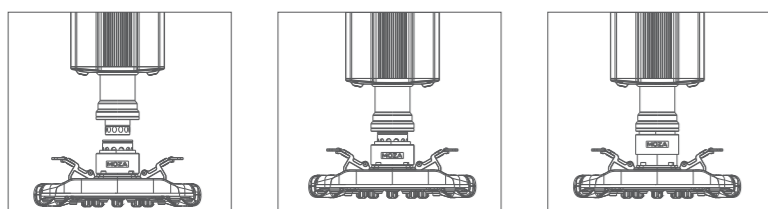
FCC Warning

This device complies with part 15 of the FCC Rules. Operation is subject to the following two conditions: (1) This device may not cause harmful interference, and (2) this device must accept any interference received, including interference that may cause undesired operation. Any Changes or modifications not expressly approved by the party responsible for compliance could void the user's authority to operate the equipment. This equipment has been tested and found to comply with the limits for a Class B digital device, pursuant to part 15 of the FCC Rules. These limits are designed to provide reasonable protection against harmful interference in a residential installation. This equipment generates uses and can radiate radio frequency energy and, if not installed and used in accordance with the instructions, may cause harmful interference to radio communications. However, there is no guarantee that interference will not occur in a particular installation. If this equipment does cause harmful interference to radio or television reception, which can be determined by turning the equipment off and on, the user is encouraged to try to correct the interference by one or more of the following measures:
• Reorient or relocate the receiving antenna.
• Increase the separation between the equipment and receiver.
• Connect the equipment into an outlet on a circuit different from that to which the receiver is connected.
• Consult the dealer or an experienced radio/TV technician for help.
The device has been evaluated to meet general RF exposure requirement. The device can be used in portable exposure condition without restriction.

01 产品介绍

- 280mm标准方程式盘宽度
• 4.3寸高清仪表
• 多达十几款专业方程式仪表UI界面
• 手工缝制打孔皮质面料
• 高强度东丽3K碳纤维骨架和拨片
• 铝合金后壳
• 碳纤维光电双离合片
• 定制赛车级快拆
• RGB流水式换挡提示灯
• 可USB直连PC (选装转接器)
• 人体工学设计
• 10个发光可编程机械键盘式按键
• 5个波段旋钮, 2个拇指旋钮, 2个方向摇杆

02 快拆使用方法



- 1. 将方向盘快拆母头上6颗钢珠的位置与底座快拆公头的6个凹槽对应
2. 将快拆往盘面方向按压
3. 快拆将自动归位锁紧, 若无归位, 可尝试轻微转动盘面或取下后再安装
4. 如需拆取盘面, 用双手捏住黑色快拆部分, 同时并拔出盘面

03 方向盘配置

在MOZA Pit House软件中可以方便快捷地对FSR方向盘进行设置。

- 离合拨片模式: 设置离合拨片操作模式, 可设置为合成轴, 独立轴和按键
• 摇杆模式: 设置摇杆操作模式, 可设置为按键和十字键
• 指示灯开关模式: 指示灯状态调节, 分为随速转动, 关闭和常亮
• 指示灯显示模式: 共分为模式一和模式二, 当鼠标移动到选项上时会弹出详细解释
• 转速提示设置: 根据转速与换挡指示灯亮起的时机关系, 分为提前型, 标准型, 极限型和自定义模式
• 亮度调节: 调节换挡指示灯的亮度
• 界面UI切换: 可在Pit House中下列界面切换UI, 也可通过按下右下双离合拨片的同时左右拨动摇杆实现切换
• 方向盘组合键: 点开方向盘图片右上角的组合键说明, 记住组合键后即可快速调节功能
• 指示灯颜色调节: 将喜欢的色块拖动到指示灯上即可更换颜色
• 屏幕亮度: 调节方向盘上的显示屏幕亮度
• 速度单位: 可设置为公制和英制
• 温度单位: 可设置为摄氏度和华氏度



(详细方向盘设置与功能, 请访问MOZA Racing官网)

方向盘和底座出厂时已经配对, 当方向盘装入到底座时, 接通电源后, 方向盘和底座会自动连接。

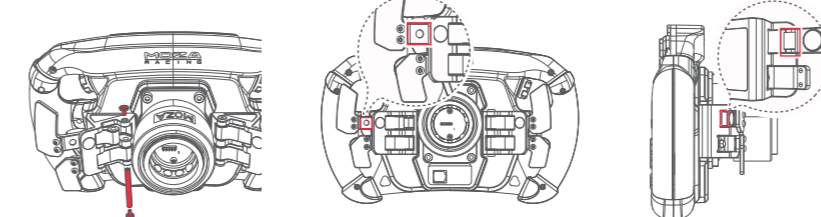
04 组合按键说明



- 左离合拨片+按下左侧摇杆: 切换最大转向角为360°
右离合拨片+向左拨动左侧摇杆: 切换仪表盘UI到上一个UI
左离合拨片+按下右侧摇杆: 切换最大转向角为540°
右离合拨片+向右拨动左侧摇杆: 切换仪表盘UI到下一个UI
左离合拨片+按下BB拇指旋钮: 切换最大转向角为720°
同时按下两个摇杆: 切换左摇杆模式; + 十字键/普通按键
左离合拨片+按下ERS拇指旋钮: 切换最大转向角为900°
同时按下两个拇指旋钮: 切换按钮颜色
左离合拨片+向左拨动左摇杆: 切换仪表盘UI到上一个UI
左离合拨片+向右拨动左摇杆: 切换仪表盘UI到下一个UI

05 磁吸拨片静音垫的安装

将方向盘放置于平面上使盘面朝下, 使用六角扳手取下换挡拨片触发杆一侧的螺丝, 再用扳手从磁吸拨片侧顶开插销 (无需完全顶出, 仅使磁吸拨片触发杆与插销可以分离即可), 然后将静音垫贴在磁吸孔背面和拨片触发杆背面凸起位置, 切勿将静音垫贴在触发杆凸起部位的下方 (此处为拨片光电开关感光区域, 静音垫覆盖上去会影响拨片功能) 如图所示, 最后将插销归位并装回螺丝。



06 包装清单

- 1. FS方向盘 2. 工具包: 六角螺丝刀 / 静音垫x4 3. 便携布袋

07 产品参数

尺寸: 280mm标准方程式盘尺寸
显示屏尺寸: 4.3英寸
显示屏分辨率: 800x480
环身材质: 皮质
骨架和面板材质: 5mm厚碳纤维
拨片材质: 3mm厚碳纤维
后壳材质: 航空级铝合金
换挡拨片: 2个
双离合拨片: 2个
发光机械键盘式按键: 10个
拇指旋钮 (可按压): 2个
波段旋钮: 5个
高亮LED RGB灯珠: 10颗
LED色彩: 7色自定义
智能预测: 支持
通过MOZA Pit House设置灯光: 支持
拆装方式: 现实赛车快拆
信号传输方式: 无线
拨片感应方式: 光电无接触式
双离合拨片模式: 合成轴/独立轴/按键

Table with 2 columns: Product Model, User Name, Product Code, Purchase Date, User Phone, Communication Address

经销商信息 (盖章)

产品保修条例

保修期

自购机日起, 底座主体, 方向盘, 踏板和仪表显示屏保修12个月。设备外壳、说明书、线材、螺丝、扳手、包装等不在“一年免费保修服务”范围内, 但您可以选择有偿服务。购买者在以下条件下不享受免费保修服务, 但您可以选择有偿服务。
1. 超过三包有效期的;
2. 无三包凭证及有效发票的, 但能够证明该产品在三包有效期内除外的;
3. 包修凭证上的型号与修理产品型号不符或者涂改的;
4. 非本公司特约维修人员拆动造成损坏的;
5. 因不可抗力造成损坏的;
6. 未按产品使用说明书要求使用、维护、保养而造成损坏的。
保修期限基于产品部位、不同国家法律法规等差异, 将有所不同, 相关国家与区域的保修期限, 请咨询MOZA官方或购买时联系的MOZA授权经销商。

