

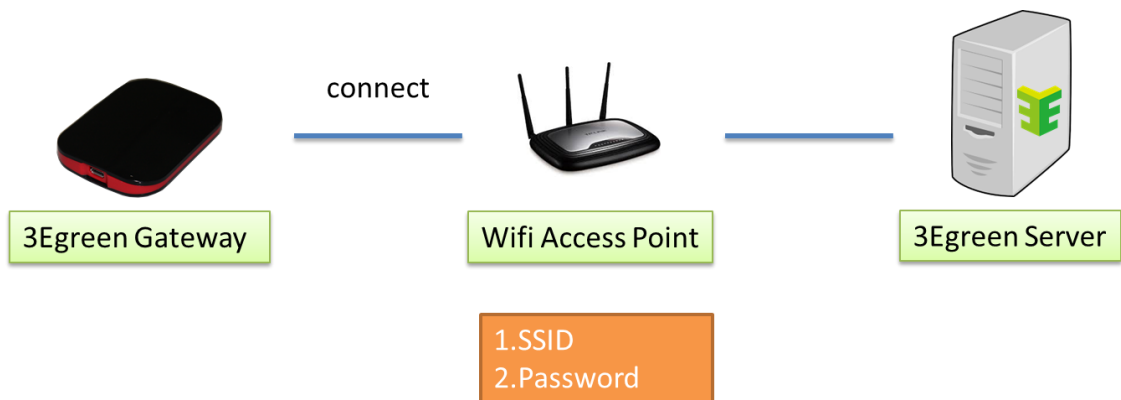


**3Egreen** technology Inc.

BRAND : 3Egreen

Product name : CM01-01

# 1. Function



Gateway need connect with Wifi AP, then data can pass on sent to cloud server.

Gateway need know Wifi AP SSID and Password, the Gateway APP function is to set the parameter into Gateway ◦

3Egreen APP Download location .

Apple Store



(APP Version 1.1.1)

Google Play



(APP Version 1.1.1)

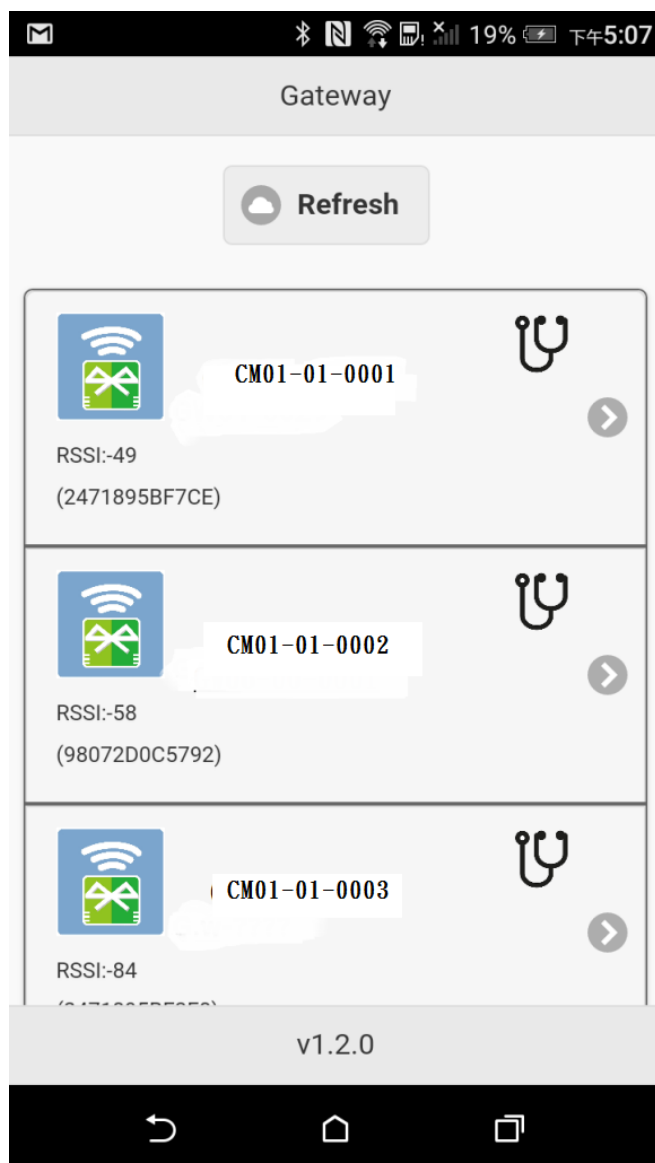
## 2. Installation

Pre-condition :

1. Install Gateway APP and Gateway working
2. Enable Smart phone Bluetooth Function .

### Step 1 :

Open APP then Gateway WIFI list will appear on screen , or user can click "Refresh" button to refresh the list .



Step 2 :

BE sure of using the same ID name



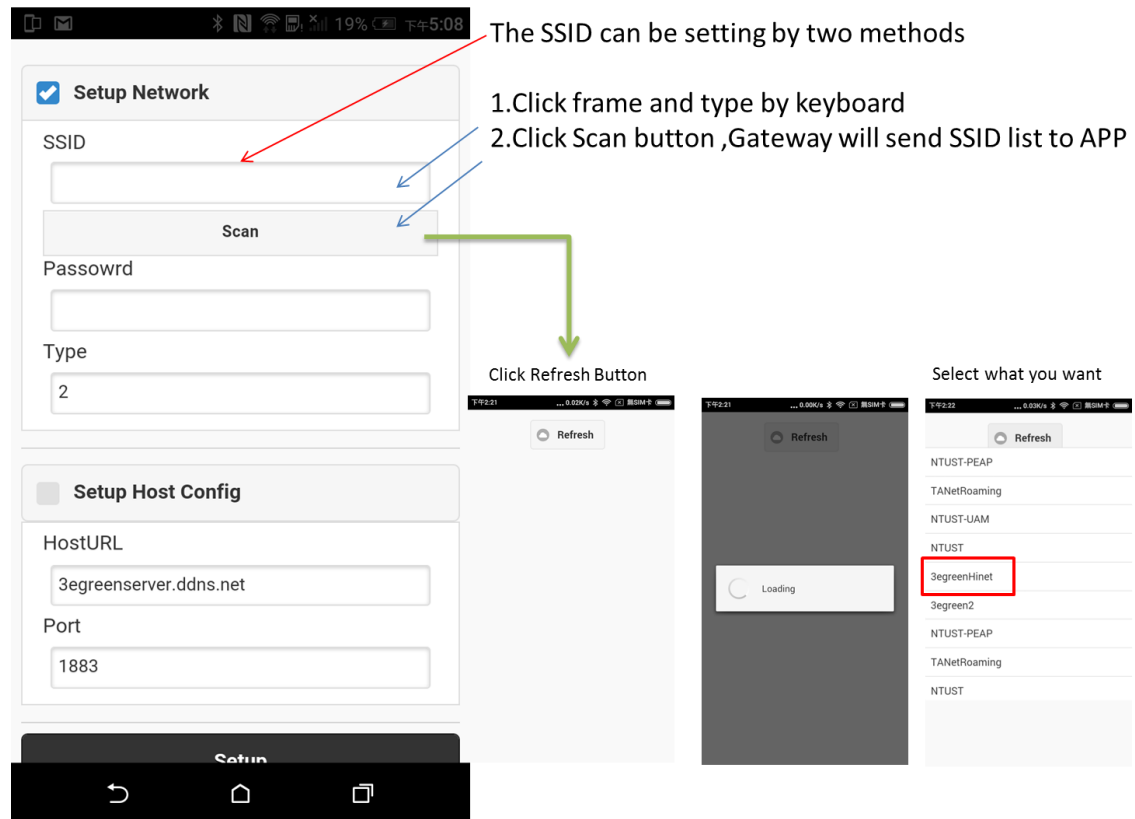
### Step 3:

Here ,Wifi App has three parameters

1. SSID: the user can use the automatic collection to fill or enter, the input length is limited to 40 characters or less
2. Password: Users must enter their own, the input length is limited to 20 characters or less
3. Type: The security type of the connection Wifi , If the user uses the automatic collection of SSID way, Gateway will automatically detect and bring this project  
If the user uses the self-input method, this item needs to be re-entered  
No password Wifi fill 0

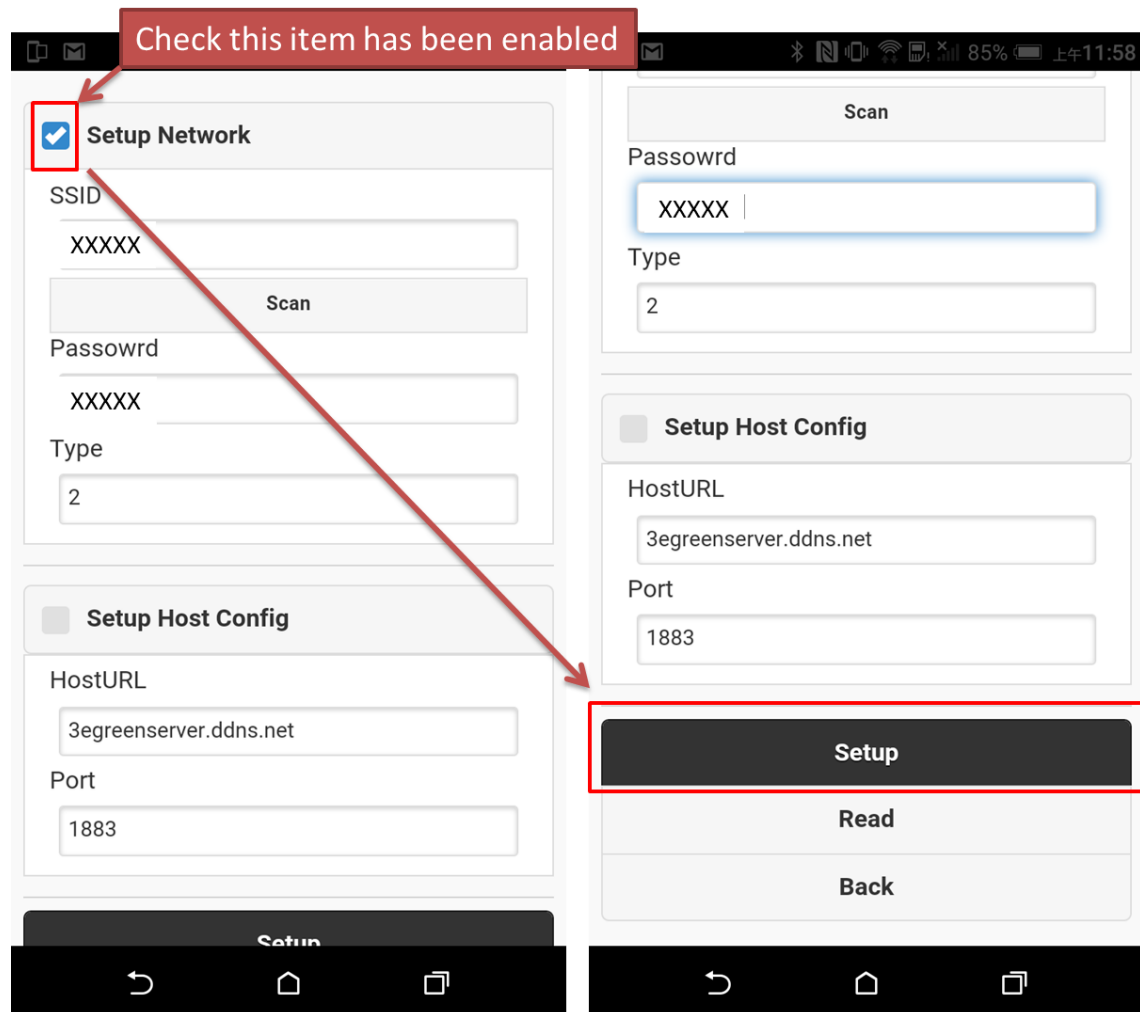
Have a password for Wifi Fill 1 (WEP) or 2 (WPA, WPA2)

Most of the passwords are usually Wifi Type 2, APP is the default value of 2



### Step 4:

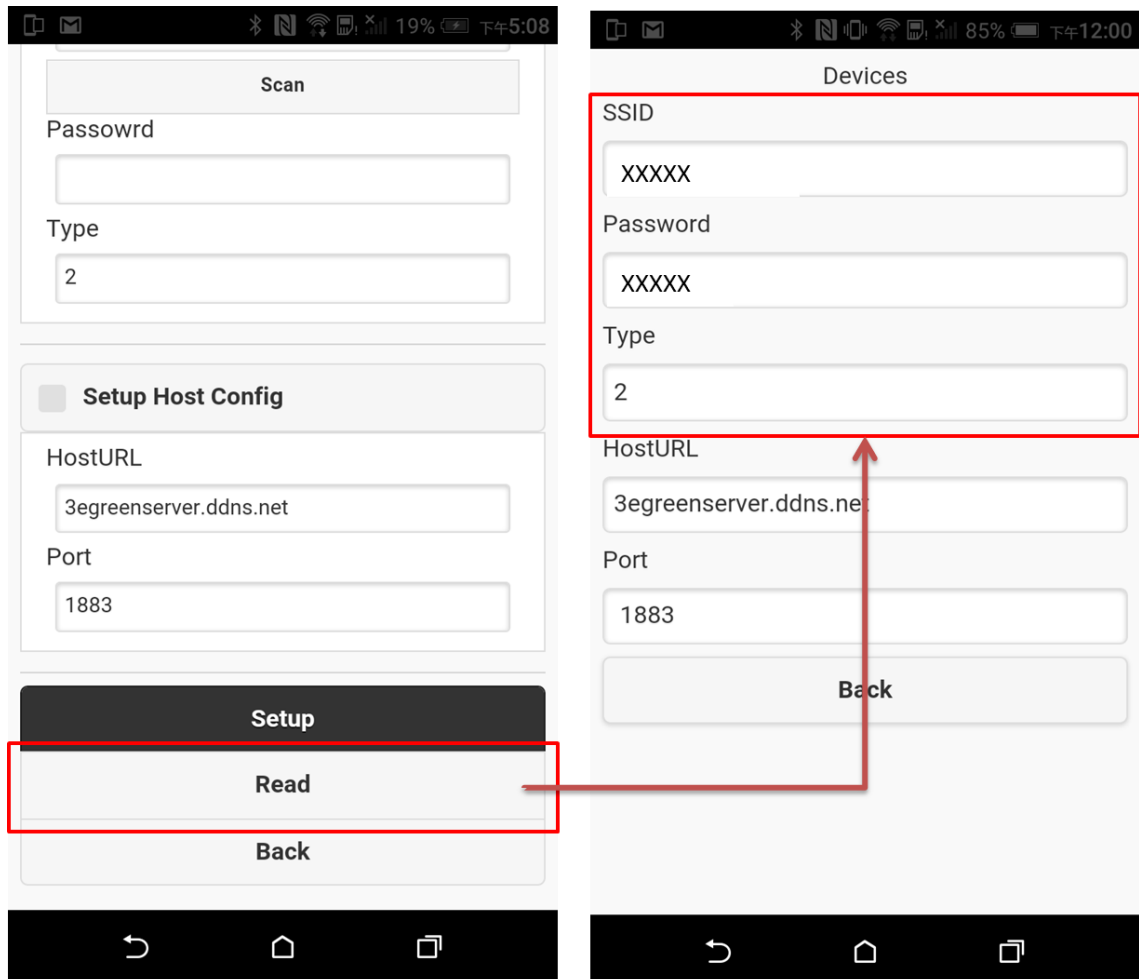
Confirm the set switch is checked, confirm and click "Setup", set to complete the APP will return to the list screen



### 3. Verification

#### 3.1 Verify the setting result

The user can click "Read" to get the result



#### 3.3 Verify Gateway working status

There are two ways to verify, one is to use APP validation, and the other is to use web verification.

Preconditions:

1. Verify that the Wifi AP is connected to the network
2. Verify that the Wifi AP does not have any special settings (for example, firewall ..)

### 3.2.1 Web-side validation

Preconditions:

1. The user has the account of the cloud platform
  2. This Gateway is registered on the green platform
- (On the use of the platform, please refer to the platform show green teaching documents)

step 1:

Click the System Diagnostics icon



Step2 :

**Confirm** the status of Gateway (online or offline)

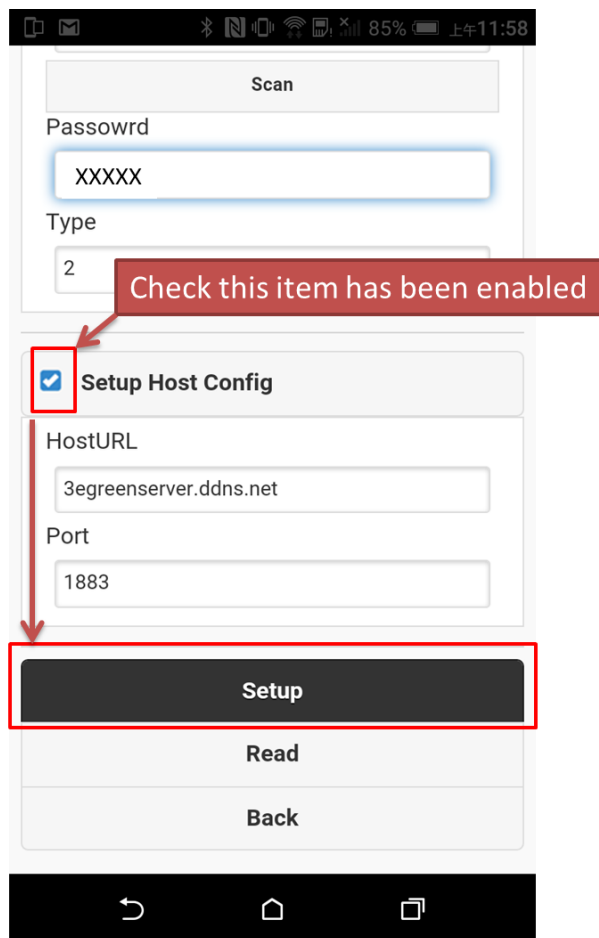
The screenshot shows the 'Smart Gateway Diagnostics' page. It features a table with columns for Address, Name, Device Name, Status, Last Updated, and Device List. The 'Status' column for the second row is highlighted with a red box.

Address	Name	Device Name	Status	Last Updated	Device List
2471895BF3F8	GW01-Office	GW01-Office	Online	2017-2-8 16:3:30	<a href="#">Device List</a>
2471895BF4D4	Demo Gateway	GW01-001N	Online	2017-2-8 16:3:30	<a href="#">Device List</a>

Showing 1 to 2 of 2 entries



### 3. Index



### 4.2 FAQ

1. [IOS] [Android] When using the Near View feature, no device list is displayed
  - [IOS] [Android] Please turn off the system Bluetooth and open once, the smart phone system, the Bluetooth function may be abnormal
  - [Android] On Android, Android version 6.0 or higher, some phones require users to manually authorize APP, please follow the following
    - Step 1: Go to the System Settings page
    - Step 2: Click "App"
    - Step 3: Find the GreenMeter icon and click
    - Step 4: Find the permissions option, click and open(Different mobile phone brand, the behavior process is not necessarily the same)

## **Federal Communications Commission (FCC) Statement**

You are cautioned that changes or modifications not expressly approved by the part responsible for compliance could void the user's authority to operate the equipment.

This equipment has been tested and found to comply with the limits for a Class B digital device, pursuant to part 15 of the FCC rules. These limits are designed to provide reasonable protection against harmful interference in a residential installation. This equipment generates, uses and can radiate radio frequency energy and, if not installed and used in accordance with the instructions, may cause harmful interference to radio communications. However, there is no guarantee that interference will not occur in a particular installation. If this equipment does cause harmful interference to radio or television reception, which can be determined by turning the equipment off and on, the user is encouraged to try to correct the interference by one or more of the following measures:

- Reorient or relocate the receiving antenna.
- Increase the separation between the equipment and receiver.
- Connect the equipment into an outlet on a circuit different from that to which the receiver is connected.
- Consult the dealer or an experienced radio/TV technician for help.

This device complies with Part 15 of the FCC Rules. Operation is subject to the following two conditions:

- 1) this device may not cause harmful interference, and
- 2) this device must accept any interference received, including interference that may cause undesired operation of the device.

(WIFI) For product available in the USA/Canada market, only channel 1~11 can be operated. Selection of other channels is not possible.

### **FCC RF Radiation Exposure Statement:**

This equipment complies with FCC radiation exposure limits set forth for an uncontrolled environment. End users must follow the specific operating instructions for satisfying RF exposure compliance. This transmitter must not be co-located or operating in conjunction with any other antenna or transmitter.