

1 Cover Page

RF Exposure Evaluation Report

Application No.: SHCR2201000294HS
FCC ID: 2AMH4M3GPS
IC: 29364-M3GPS
Applicant: Motocaddy Ltd.
Address of Applicant: Units 15 to 18, Stansted Distribution Centre Start Hill Great Hallingbury Hertfordshire CM22 7DG United Kingdom
Manufacturer: CADDIESTER GOLF BUGGY TECHNOLOGY LTD
Address of Manufacturer: NO.16-8 TONGZI RIVER WEST ROAD, ZHONGLOU DEVELOPMENT DIST, CHANGZHOU, CHINA
Factory: CADDIESTER GOLF BUGGY TECHNOLOGY LTD
Address of Factory: NO.16-8 TONGZI RIVER WEST ROAD, ZHONGLOU DEVELOPMENT DIST, CHANGZHOU, CHINA
Equipment Under Test (EUT):
EUT Name: Golf Trolley
Model No.: M3 GPS DHC
Add Model No.: M3 GPS
Trade Mark: Motocaddy
Standard(s) : FCC Rules 47 CFR §2.1093
KDB 447498 D04 interim General RF Exposure Guidance v01
RSS-102 Issue 5 Amendment 1 (February 2, 2021)
Date of Receipt: 2022-02-14
Date of Test: 2022-02-14 to 2022-06-10
Date of Issue: 2023-06-13

Test Result:	Pass*
---------------------	--------------

* In the configuration tested, the EUT complied with the standards specified above.

Parlam Zhan

Parlam Zhan
Laboratory Manager



Unless otherwise agreed in writing, this document is issued by the Company subject to its General Conditions of Service printed overleaf, available on request or accessible at <http://www.sgs.com/en/Terms-and-Conditions.aspx> and, for electronic format documents, subject to Terms and Conditions for Electronic Documents at <http://www.sgs.com/en/Terms-and-Conditions/Terms-e-Documents.aspx>. Attention is drawn to the limitation of liability, indemnification and jurisdiction issues defined therein. Any holder of this document is advised that information contained hereon reflects the Company's findings at the time of its intervention only and within the limits of Client's instructions, if any. The Company's sole responsibility is to its Client and this document does not exonerate parties to a transaction from exercising all their rights and obligations under the transaction documents. This document cannot be reproduced except in full, without prior written approval of the Company. Any unauthorized alteration, forgery or falsification of the content or appearance of this document is unlawful and offenders may be prosecuted to the fullest extent of the law. Unless otherwise stated the results shown in this test report refer only to the sample(s) tested and such sample(s) are retained for 30 days only.
Attention: To check the authenticity of testing /inspection report & certificate, please contact us at telephone: (86-755) 8307 1443, or email: CN.Doccheck@sgs.com

Revision Record			
Version	Description	Date	Remark
00	Original	2023-06-13	/

Authorized for issue by:				
		Wade Zhang		
		Wade Zhang/Project Engineer		
		Parlam Zhan		
		Parlam Zhan /Reviewer		

2 Contents

	Page
1 COVER PAGE	1
2 CONTENTS	3
3 GENERAL INFORMATION	4
3.1 GENERAL DESCRIPTION OF E.U.T.	4
3.2 DETAILS OF E.U.T.	4
3.3 SEPARATION DISTANCE	4
3.4 TEST LOCATION.....	5
3.5 TEST FACILITY.....	5
4 FCC RADIOFREQUENCY RADIATION EXPOSURE LIMITS	6
4.1 BLANKET 1 MW BLANKET EXEMPTION	6
4.2 MPE-BASED EXEMPTION	6
4.3 SAR-BASED EXEMPTION.....	7
4.4 RF EXPOSURE TEST EXEMPTIONS FOR SIMULTANEOUS TRANSMISSION	8
5 IC RADIOFREQUENCY RADIATION EXPOSURE LIMITS:.....	9
6 MEASUREMENT AND CALCULATION.....	10
6.1 MAXIMUM TRANSMIT POWER	10
6.2 RF EXPOSURE CALCULATION.....	10



3 General Information

3.1 General Description of E.U.T.

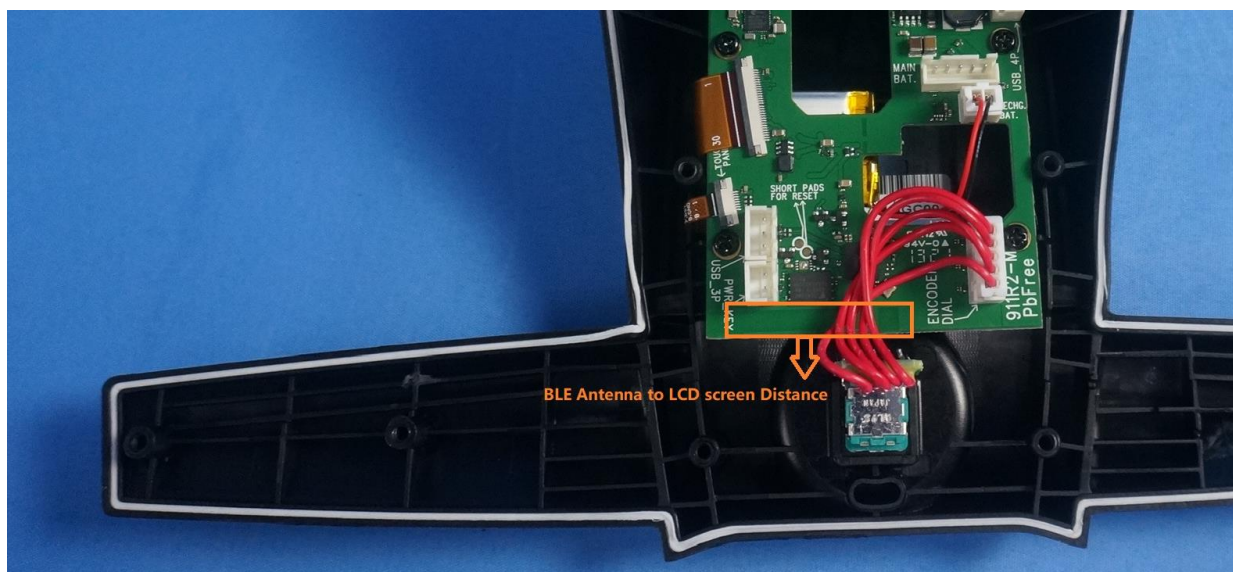
Power supply:	DC 28.8V Battery Charging Adapter Model: LC-2323 Input: AC 100-240V 50/60Hz 85W Output: DC 33.2V 2A
S/N:	SN12000291
Firmware Version:	V1.03
Product Type:	<input checked="" type="checkbox"/> Portable device <input type="checkbox"/> Mobile device <input type="checkbox"/> Fixed device

3.2 Details of E.U.T.

Operation Frequency:	2402MHz to 2480MHz
Modulation Type:	GFSK
Number of Channels:	40
Channel Spacing:	2MHz
Antenna Type:	PCB Antenna
Antenna Gain:	5.9dBi (Provided by manufacturer)

3.3 Separation Distance

Separation distance between the antenna to person (R):	1cm
Remark: This minimum test separation distance is determined by the smallest distance from the antenna and radiating structures or outer surface of the device, according to the host form factor, exposure conditions and platform requirements, to any part of the body or extremity of a user or bystander.	



The BLE Antenna to LCD screen Distance (1cm)



3.4 Test Location

All tests were performed at:

SGS-CSTC Standards Technical Services (Shanghai) Co., Ltd. E&E Lab

588 West Jindu Road, Xinqiao, Songjiang, 201612 Shanghai, China.

Tel: +86 21 6191 5666

Fax: +86 21 6191 5678

3.5 Test Facility

The test facility is recognized, certified, or accredited by the following organizations:

• **CNAS (No. CNAS L0599)**

CNAS has accredited SGS-CSTC Standards Technical Services (Shanghai) Co., Ltd. to ISO/IEC 17025:2017 General Requirements for the Competence of Testing and Calibration Laboratories (CNAS-CL01 Accreditation Criteria for the Competence of Testing and Calibration Laboratories) for the competence in the field of testing.

• **A2LA (Certificate No. 6332.01)**

SGS-CSTC Standards Technical Services (Shanghai) Co., Ltd. is accredited by the American Association for Laboratory Accreditation(A2LA).

• **FCC (Designation Number: CN1301)**

SGS-CSTC Standards Technical Services (Shanghai) Co., Ltd. has been recognized as an accredited testing laboratory.

• **ISED (CAB Identifier: CN0020)**

SGS-CSTC Standards Technical Services (Shanghai) Co., Ltd. EMC Laboratory has been recognized by Innovation, Science and Economic Development Canada (ISED) as an accredited testing laboratory.

Company Number: 8617A

• **VCCI (Member No.: 3061)**

The 3m Semi-anechoic chamber and Shielded Room of SGS-CSTC Standards Technical Services (Shanghai) Co., Ltd. has been registered in accordance with the Regulations for Voluntary Control Measures with Registration No.: R-13868, C-14336, T-12221, G-10830 respectively.



Unless otherwise agreed in writing, this document is issued by the Company subject to its General Conditions of Service printed overleaf, available on request or accessible at <http://www.sgs.com/en/Terms-and-Conditions.aspx> and, for electronic format documents, subject to Terms and Conditions for Electronic Documents at <http://www.sgs.com/en/Terms-and-Conditions/Terms-e-Document.aspx>. Attention is drawn to the limitation of liability, indemnification and jurisdiction issues defined therein. Any holder of this document is advised that information contained hereon reflects the Company's findings at the time of its intervention only and within the limits of Client's instructions, if any. The Company's sole responsibility is to its Client and this document does not exonerate parties to a transaction from exercising all their rights and obligations under the transaction documents. This document cannot be reproduced except in full, without prior written approval of the Company. Any unauthorized alteration, forgery or falsification of the content or appearance of this document is unlawful and offenders may be prosecuted to the fullest extent of the law. Unless otherwise stated the results shown in this test report refer only to the sample(s) tested and such sample(s) are retained for 30 days only.
Attention: To check the authenticity of testing/inspection report & certificate, please contact us at telephone: (86-755) 8307 1443, or email: CN.Doccheck@sgs.com

SGS-CSTC Standards Technical Services (Shanghai) Co., Ltd.
Testing Center EMC

NO.588 West Jindu Road, Songjiang District, Shanghai, China 201612
中国·上海·松江区金都西路588号 邮编: 201612

t(86-21) 61915666 f(86-21) 61915678 www.sgs.com.cn
t(86-21) 61915666 f(86-21) 61915678 e.sgs.china@sgs.com

4 FCC Radiofrequency radiation exposure limits

Test exemptions apply for devices used in general population/uncontrolled exposure environments, according to the SAR-based, or MPE-based exemption thresholds.

4.1 Blanket 1 mW Blanket Exemption

The 1 mW Blanket Exemption of §1.1307(b)(3)(i)(A) applies for single fixed, mobile, and portable RF sources with available maximum time-averaged power of no more than 1 mW, regardless of separation distance.

The 1-mW blanket exemption applies at separation distances less than 0.5 cm, including where there is no separation. This exemption shall not be used in conjunction with other exemption criteria other than those for multiple RF sources in paragraph §1.1307(b)(3)(ii)(A).

The 1-mW exemption is independent of service type and covers the full range of 100 kHz to 100 GHz, but it shall not be used in conjunction with other exemption criteria or in devices with higher-power transmitters operating in the same time-averaging period. Exposure from such higher-power transmitters would invalidate the underlying assumption that exposure from the lower-power transmitter is the only contributor to SAR in the relevant volume of tissue.

Medical implant devices may only use this exemption and that in paragraph (b)(3)(ii)(A);

4.2 MPE-based Exemption

General frequency and separation-distance dependent MPE-based effective radiated power (ERP) thresholds are in Table B.1 [Table 1 of §1.1307(b)(1)(i)(C)] to support an exemption from further evaluation from 300 kHz through 100 GHz. The minimum separation distance (R in meters) from the body of a nearby person for the frequency (f in MHz) at which the source operates, the ERP (watts) is no more than the calculated value prescribed for that frequency. For the exemption in Table 1 to apply, **R must be at least $\lambda/2\pi$** , where λ is the free-space operating wavelength in meters. If the ERP of a single RF source is not easily obtained, then the available maximum time-averaged power may be used in lieu of ERP if the physical dimensions of the radiating structure(s) do not exceed the electrical length of $\lambda/4$ or if the antenna gain is less than that of a half-wave dipole (1.64 linear value).



Table B.1—Thresholds For Single RF Sources Subject to Routine Environmental Evaluation

RF Source Frequency			Minimum Distance			Threshold ERP
f_L MHz		f_H MHz	$\lambda_L / 2\pi$		$\lambda_H / 2\pi$	W
0.3	—	1.34	159 m	—	35.6 m	1,920 R ²
1.34	—	30	35.6 m	—	1.6 m	3,450 R ² /f ²
30	—	300	1.6 m	—	159 mm	3.83 R ²
300	—	1,500	159 mm	—	31.8 mm	0.0128 R ² f
1,500	—	100,000	31.8 mm	—	0.5 mm	19.2R ²
Subscripts L and H are low and high; λ is wavelength. R: Separation distance between the antenna to person						

The table applies to any RF source (i.e. single fixed, mobile, and portable transmitters) and specifies power and distance criteria for each of the five frequency ranges used for the MPE limits. These criteria apply at separation distances from any part of the radiating structure of at least $\lambda/2\pi$. The thresholds are based on the general population MPE limits with a single perfect reflection, outside of the reactive near-field, and in the main beam of the radiator.

4.3 SAR-based Exemption

SAR-based thresholds are derived based on frequency, power, and separation distance of the RF source. The formula defines the thresholds in general for either available maximum time-averaged power or maximum time-averaged ERP, whichever is greater.

If the ERP of a device is not easily determined, such as for a portable device with a small form factor, the applicant may use the available maximum time-averaged power exclusively if the device antenna or radiating structure does not exceed an electrical length of $\lambda/4$.

As for devices with antennas of length greater than $\lambda/4$ where the gain is not well defined, but always less than that of a half-wave dipole (length $\lambda/2$), the available maximum time-averaged power generated by the device may be used in place of the maximum time-averaged ERP, where that value is not known.

The separation distance is the smallest distance from any part of the antenna or radiating structure for all persons, during operation at the applicable ERP. In the case of mobile or portable devices, the separation distance is from the outer housing of the device where it is closest to the antenna.

The SAR-based exemption formula of §1.1307(b)(3)(i)(B), repeated here as Formula (B.2), applies for single fixed, mobile, and portable RF sources with available maximum time-averaged power or effective radiated power (ERP), whichever is greater, of less than or equal to the threshold P_{th} (mW).

This method shall only be used at separation distances from **0.5cm to 40cm** and at frequencies from 0.3 GHz to 6 GHz (inclusive). P_{th} is given by Formula (B.2).

$$P_{th} \text{ (mW)} = \begin{cases} ERP_{20 \text{ cm}} (d/20 \text{ cm})^x & d \leq 20 \text{ cm} \\ ERP_{20 \text{ cm}} & 20 \text{ cm} < d \leq 40 \text{ cm} \end{cases} \quad (\text{B.2})$$

where



Unless otherwise agreed in writing, this document is issued by the Company subject to its General Conditions of Service printed overleaf, available on request or accessible at <http://www.sgs.com/en/Terms-and-Conditions.aspx> and, for electronic format documents, subject to Terms and Conditions for Electronic Documents at <http://www.sgs.com/en/Terms-and-Conditions/Terms-e-Document.aspx>. Attention is drawn to the limitation of liability, indemnification and jurisdiction issues defined therein. Any holder of this document is advised that information contained hereon reflects the Company's findings at the time of its intervention only and within the limits of Client's instructions, if any. The Company's sole responsibility is to its Client and this document does not exonerate parties to a transaction from exercising all their rights and obligations under the transaction documents. This document cannot be reproduced except in full, without prior written approval of the Company. Any unauthorized alteration, forgery or falsification of the content or appearance of this document is unlawful and offenders may be prosecuted to the fullest extent of the law. Unless otherwise stated the results shown in this test report refer only to the sample(s) tested and such sample(s) are retained for 30 days only.
Attention: To check the authenticity of testing/inspection report & certificate, please contact us at telephone: (86-755) 8307 1443, or email: CN.Doccheck@sgs.com

$$x = -\log_{10} \left(\frac{60}{ERP_{20\text{ cm}} \sqrt{f}} \right)$$

and f is in GHz, d is the separation distance (cm), and $ERP_{20\text{ cm}}$ is per Formula (B.1).

Limit calculation				
Frequency range(GHz)	Frequency(GHz)	X	d(cm)	Pth (mW)
0.3~1.5	0.45	1.011	1	44.373
1.5~6	2.48	1.905	1	10.175

4.4 RF Exposure Test Exemptions for Simultaneous Transmission

The available maximum time-averaged power of each source is no more than 1 mW and there is a separation distance of two centimeters between any portion of a radiating structure operating and the nearest portion of any other radiating structure in the same device, except if the sum of multiple sources is less than 1 mW during the time-averaging period, in which case they may be treated as a single source (separation is not required). This exemption may not be used in conjunction with other exemption criteria other than those in paragraph (b)(3)(i)(A) of this section. Medical implant devices may only use this exemption and that in paragraph (b)(3)(i)(A).

Either SAR-based or MPE-based exemption may be considered for test exemption for fixed, mobile, or portable device exposure conditions; therefore, the contributions from each exemption in conjunction with the measured SAR (Evaluated k term) shall be used to determine exemption for simultaneous transmission. In the case of fixed RF sources operating in the same time-averaging period, or of multiple mobile or portable RF sources within a device operating in the same time averaging period, if the sum of the fractional contributions to the applicable thresholds is less than or equal to 1 as indicated in the following equation.

$$\sum_{i=1}^a \frac{P_i}{P_{th,i}} + \sum_{j=1}^b \frac{ERP_j}{ERP_{th,j}} + \sum_{k=1}^c \frac{Evaluated_k}{Exposure Limit_k} \leq 1$$

Where:

a = number of fixed, mobile, or portable RF sources claiming exemption using paragraph (b)(3)(i)(B) of this section for Pth, including existing exempt transmitters and those being added.

b = number of fixed, mobile, or portable RF sources claiming exemption using paragraph (b)(3)(i)(C) of this section for Threshold ERP, including existing exempt transmitters and those being added.

c = number of existing fixed, mobile, or portable RF sources with known evaluation for the specified minimum distance including existing evaluated transmitters.

P_i = the available maximum time-averaged power or the ERP, whichever is greater, for fixed, mobile, or portable RF source i at a distance between 0.5 cm and 40 cm (inclusive).

P_{th,i} = the exemption threshold power (Pth) according to paragraph (b)(3)(i)(B) of this section for fixed, mobile, or portable RF source i .



Unless otherwise agreed in writing, this document is issued by the Company subject to its General Conditions of Service printed overleaf, available on request or accessible at <http://www.sgs.com/en/Terms-and-Conditions.aspx> and, for electronic format documents, subject to Terms and Conditions for Electronic Documents at <http://www.sgs.com/en/Terms-and-Conditions/Terms-e-Documents.aspx>. Attention is drawn to the limitation of liability, indemnification and jurisdiction issues defined therein. Any holder of this document is advised that information contained hereon reflects the Company's findings at the time of its intervention only and within the limits of Client's instructions, if any. The Company's sole responsibility is to its Client and this document does not exonerate parties to a transaction from exercising all their rights and obligations under the transaction documents. This document cannot be reproduced except in full, without prior written approval of the Company. Any unauthorized alteration, forgery or falsification of the content or appearance of this document is unlawful and offenders may be prosecuted to the fullest extent of the law. Unless otherwise stated the results shown in this test report refer only to the sample(s) tested and such sample(s) are retained for 30 days only.
Attention: To check the authenticity of testing/inspection report & certificate, please contact us at telephone: (86-755) 8307 1443, or email: CN.Doccheck@sgs.com

ERP_j = the ERP of fixed, mobile, or portable RF source j.

ERP_{th,j} = exemption threshold ERP for fixed, mobile, or portable RF source j, at a distance of at least $\lambda / 2 \pi$ according to the applicable formula of paragraph (b)(3)(i)(C) of this section.

Evaluated_k = the maximum reported SAR or MPE of fixed, mobile, or portable RF source k either in the device or at the transmitter site from an existing evaluation at the location of exposure.

Exposure Limit_k = either the general population/uncontrolled maximum permissible exposure (MPE) or specific absorption rate (SAR) limit for each fixed, mobile, or portable RF source k, as applicable from § 1.1310 of this chapter.

5 IC Radiofrequency radiation exposure limits:

According to RSS-102 section 2.5.1, SAR evaluation is required if the separation distance between the user and/or bystander and the antenna and/or radiating element of the device is less than or equal to 20 cm, except when the device operates at or below the applicable output power level (adjusted for tune-up tolerance) for the specified separation distance

MHz	5	10	15	20	25	30	35	40	45	50	mm
≤300	71	101	132	162	193	223	254	284	315	345	mW
450	52	70	88	106	123	141	159	177	195	213	
835	17	30	42	55	67	80	92	105	117	130	
1900	7	10	18	34	60	99	153	225	316	431	
2450	4	7	15	30	52	83	123	173	235	309	
3500	2	6	16	32	55	86	124	170	225	290	
5800	1	6	15	27	41	56	71	85	97	106	

Output power level shall be the higher of the maximum conducted or equivalent isotropically radiated power (e.i.r.p.) source-based, time-averaged output power. For controlled use devices where the 8 W/kg for 1 gram of tissue applies, the exemption limits for routine evaluation are multiplied by a factor of 5. For limb-worn devices where the 10 gram value applies, the exemption limits for routine evaluation in Table 1 are multiplied by a factor of 2.5. If the operating frequency of the device is between two frequencies located in Table 1, linear interpolation shall be applied for the applicable separation distance.

The practical use condition for this device is as a handheld device. So the applicable limit is 10-g extremity SAR.

For BLE@1cm, the limit is $P_{max} \leq 7mW \cdot 2.5 = 17.5mW$



Unless otherwise agreed in writing, this document is issued by the Company subject to its General Conditions of Service printed overleaf, available on request or accessible at <http://www.sgs.com/en/Terms-and-Conditions.aspx> and, for electronic format documents, subject to Terms and Conditions for Electronic Documents at <http://www.sgs.com/en/Terms-and-Conditions/Terms-e-Documents.aspx>. Attention is drawn to the limitation of liability, indemnification and jurisdiction issues defined therein. Any holder of this document is advised that information contained hereon reflects the Company's findings at the time of its intervention only and within the limits of Client's instructions, if any. The Company's sole responsibility is to its Client and this document does not exonerate parties to a transaction from exercising all their rights and obligations under the transaction documents. This document cannot be reproduced except in full, without prior written approval of the Company. Any unauthorized alteration, forgery or falsification of the content or appearance of this document is unlawful and offenders may be prosecuted to the fullest extent of the law. Unless otherwise stated the results shown in this test report refer only to the sample(s) tested and such sample(s) are retained for 30 days only.
Attention: To check the authenticity of testing/inspection report & certificate, please contact us at telephone: (86-755) 8307 1443, or email: CN.Doccheck@sgs.com

SGS-CSTC Standards Technical Services (Shanghai) Co., Ltd.
Testing Center ENEC (Shanghai) Services (Shanghai) Co., Ltd.

NO.588 West Jinan Road, Songjiang District, Shanghai, China 201612
中国·上海·松江区金都西路588号 邮编: 201612

t:(86-21) 61915666 f:(86-21) 61915678 www.sgs.com.cn
t:(86-21) 61915666 f:(86-21) 61915678 e:sgs.china@sgs.com

6 Measurement and Calculation

6.1 Maximum transmit power

The Power Data is based on the RF Test Report SHCR220100029401.

Test Mode	Test Channel	Power[dBm]	Power[mW]
BLE	2402	-1.89	0.65
BLE	2440	-1.69	0.68
BLE	2480	-2.45	0.57

6.2 RF Exposure Calculation

For single RF source :

	Evaluation method	Separation distance between the antenna to person (R)
<input type="checkbox"/>	Blanket 1 mW Blanket Exemption	Regardless of separation distance
<input type="checkbox"/>	MPE-based Exemption(ERP)	$R \geq (\lambda / 2 \pi)$
<input checked="" type="checkbox"/>	SAR-based Exemption(P_{th})	$0.5\text{cm} < R < 40\text{cm}$

The Max Conducted Peak Output Power is 0.68 mW. The best case gain of the antenna is 5.9dBi.

5.9dBi logarithmic terms convert to numeric result is nearly 3.89.

According to the formula. calculate the EIRP test result:

$$\text{EIRP} = P \times G = 0.68 \text{ mW} \times 3.89 = 2.65\text{mW} < 10.175\text{mW}$$

Remark: we used the maximum power between the conducted power and ERP/EIRP to perform RF exposure exemption evaluation.

So, the device is to qualify for FCC SAR test exemption, the exemption report is in lieu of the SAR report.

For IC:

$$\text{EIRP} = P \times G = 0.68 \text{ mW} \times 3.89 = 2.65\text{mW} = 0.00265\text{W} < 0.0175\text{W}$$

So, the device is to qualify for FCC & IC SAR test exemption, the exemption report is in lieu of the SAR report.

--End of the Report--

