

Wireless Charging Mount Kit With Smart Auto Clamping

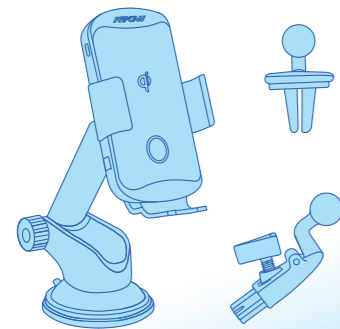
CA142A, BMCA142A, BMCA142AB, BMCA124A,

CA124A, BMCA125A, CA125A, BMCA126A, CA126A

FCC ID: 2AMH2-BMCA142A

MPOW TECHNOLOGY CO., LIMITED  
FLAT/RM 605 6/F FA YUEN COMMERCIAL  
BUILDING 75-77 FA YUEN STREET MONGKOK KL  
HONG KONG

MPOW

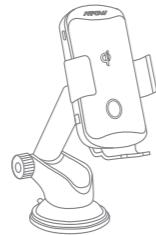


M4.2 BUNDLE

BMCA142A  
Wireless Charging Mount Kit  
with Smart Auto Clamp

For More Information Please Visit  
www.xmpow.com

**1 Device and Accessories**



Wireless Charging Dash/Windshield Mount  
with Smart Auto Clamp



Silicone Pads x 1  
for CD Mount



CD Slot Mount x 1



Air Vent Clip x 1



Car Charger x 1

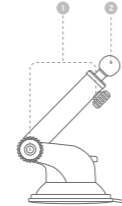


User Manual x 1

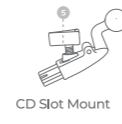


1 m Type C cable x 1

**2 Instructions**



Dash/Windshield Mount



CD Slot Mount



Air Vent Clip

- 1 Adjustable screw
- 2 Locking Knob
- 3 Tightening Screw

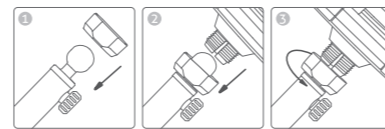
- 4 Ballhead
- 5 Ballhead Cradle
- 6 Air Vent Clip

**3 How to use**

**DASH/WINDSHIELD MOUNT**

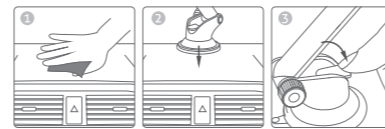
**Assemble**

- Pop the locking knob over the ballhead.
- Push the ballhead into the ballhead cradle.
- Rotate the locking knob anticlockwise tight.

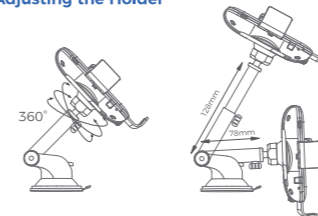


**Installing the Mount**

- Clean and dry the dashboard surface.
- Remove the plastic cover from the suction cup and place the mount on the dashboard. Press down firmly on the mount to make sure the suction cup is fully fastened, then pull down the locking lever to fasten the setup.



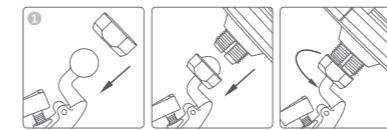
**Adjusting the Holder**



**CD SLOT MOUNT**

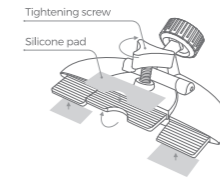
**Assemble**

- Pop the locking knob over the ballhead.
- Push the ballhead into the ballhead cradle.
- Rotate the locking knob clockwise tightly.

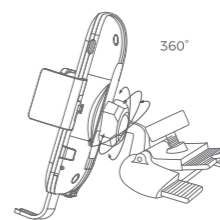


**Installing the Mount**

- Stick the silicone pad to the blade for a permanent, secure, fixture.
- Completely loosen the tightening screw, so the blade is in a closed position.
- Insert the blade into CD slot and turn the tightening screw clockwise. The blade will slowly expand. Stop once it holds securely.



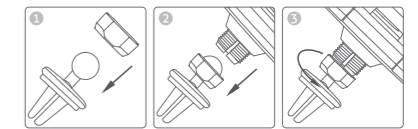
**Adjusting the Holder**



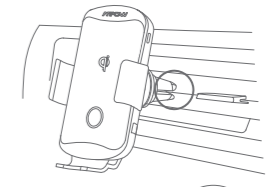
**AIR VENT MOUNT**

**Assemble**

- Pop the locking knob over the ballhead.
- Push the ballhead into the ballhead cradle.
- Rotate the locking knob clockwise tightly.



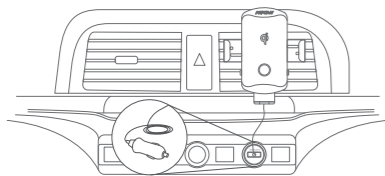
Select an appropriate position according to the width of the vent slat.



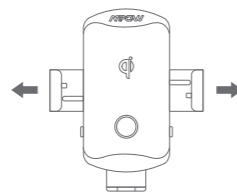
Wide gap for thick air vent blades  
Narrow gap for thin air vent blades

**Power on**

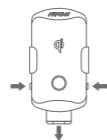
Plug one end of the type c cable into the Charging port of the phone mount and the other end in to the USB port of the car adaptor. Insert the car adaptor into the car cigarette lighter.



**Place your smartphone**



**Infrared sensor control**  
The arms will open automatically and grip your phone once your phone approach.

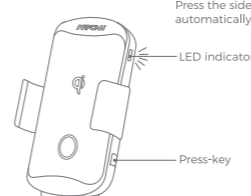


**Press-key control**  
Press the either side button, the arms will open. Place your phone, the arms will tighten automatically. Extend the adjustable bottom support to align the charging coil of your device.

**Remarks:**

- When no power supply, unit can be opened manually by pressing a side button within 1 minutes.
- Please take off the thick phone case for better use.
- In order to use the wireless function, please pull down the bottom support to adjust when the phone size is over 6.2".

**Take off smartphone**



Press the side button, the clips open automatically, take your phone out.

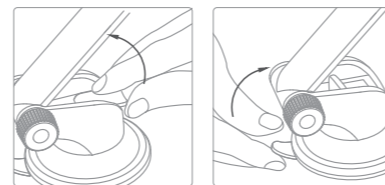
**4 LED Indication**

What It Means	Light Color
1 You just plugged into power	The indicator light flashes blue & red red & blue once alternately then the light keeps blue as standby mode
2 Standby Mode	Indicator light is BLUE *
3 Charging	Red indicator light is on * → *
4 Improper Charge	Red and Blue indicator light is flashing * → *
5 Full Charged	Blue indicator on *

**Remarks:** The power indicator always lights up blue when the power is plugged in.

**Remark: How to Remove the Dash/Windshield Mount**

Pull up the locker lever, then release the pressure by pulling on the attached tab.



**Note**

**△ When the LED light flashes during the wireless charging, which indicates a charging failure.**

- Charge via a 5V/2.4A car charger to ensure the optimal charging efficiency (5W).
- If the adapter is of QC 2.0 or above, the charging efficiency can reach 7.5W or 10W for your phone.
- The phone case is too thick (recommended phone case thickness within 2mm).
- The phone is not placed at the center of the wireless charger.
- There is metal/magnet on the back of cell phone or phone case.
- Cell phones do not support Qi wireless charge function.

**△ Attention**

- Please keep the charger away from water of other liquid.
- If you need to clean the charger, please make sure it is not connected power supply.
- Using Environment temperature remains 68-113°F.
- The device will stop charging when sensing ID card, metal and magnetic materials.

**5 Limited Warranty**

MPOW Technology Co., LTD. warrants to you that the Product (excepting components provided in / with the Product) will be free from defects in workmanship and materials for a period of ONE year from the date of retail purchase by you (the "Warranty Period").

During the Warranty Period, the Product (excepting components), will be repaired or replaced at MPOW's option, without charge for either parts or labor OR at MPOW's sole option, the price of the Product may be refunded, subject to depreciation based on your purchase price for the Product pro-rated over the remaining balance of the Warranty Period.

Any warranty service or replacement of parts will not extend the Warranty Period.

**This Limited Warranty does not cover defects which are a result of:**

- Damage caused by accident, unreasonable use or neglect (including the lack of reasonable and necessary maintenance).
- Damage during shipment (claims must be presented to the carrier).
- Damage to, or deterioration of, any accessory or decorative surface.

- Damage resulting from failure to follow instructions contained in your owner's manual.
- Damage resulting from the performance of repairs by someone other than an authorized MPOW service center.
- Deterioration of component parts, the nature of which is to become worn or depleted with use.

**6 FCC Statement**

Any Changes or modifications not expressly approved by the party responsible for compliance could void the user's authority to operate the equipment.

**This device complies with part 15 of the FCC Rules.**

**Operation is subject to the following two conditions:**

- (1) This device may not cause harmful interference, and
- (2) this device must accept any interference received, including interference that may cause undesired operation.

**FCC Radiation Exposure Statement:**

This equipment complies with FCC radiation exposure limits set forth for an uncontrolled environment. This equipment should be installed and operated with minimum distance 20cm between the radiator & your body.

**NOTE**

This equipment has been tested and found to comply with the limits for a Class B digital device, pursuant to part 15 of the FCC Rules. These limits are designed to provide reasonable protection against harmful interference in a residential installation. This equipment generates, uses and can radiate radio frequency energy and, if not installed and used in accordance with the instructions, may cause harmful interference to radio communications. However, there is no guarantee that interference will not occur in a particular installation. If this equipment does cause harmful interference to radio or television reception, which can be determined by turning the equipment off and on, the user is encouraged to try to correct the interference by one or more of the following measures:

- Reorient or relocate the receiving antenna.
- Increase the separation between the equipment and receiver.
- Connect the equipment into an outlet on a circuit different from that to which the receiver is connected.
- Consult the dealer or a technician for help.

**MPOW TECHNOLOGY CO.,LTD**  
Copyright © MPOW Inc. All rights reserved.  
www.xmpow.com | support@xmpow.com  
Phone Number: 1-844-869-3583  
FCC ID: 2A-MH2-BMCA142A  
**MADE IN CHINA**

Caution:

This device complies with Part 15 of the FCC rules and Industry Canada license-exempt RSS standard(s). Operation is subject to the following two conditions: (1) this device may not cause harmful interference, and (2) this device must accept any interference received, including interference that may cause undesired operation.

The manufacturer is not responsible for any radio or TV interference caused by unauthorized modifications or change to this equipment. Such modifications or change could void the user's authority to operate the equipment.

This radio transmitter (identify the device by certification number or model number if Category II) has been approved by Industry Canada to operate with the antenna types listed below with the maximum permissible gain indicated. Antenna types not included in this list, having a gain greater than the maximum gain indicated for that type, are strictly prohibited for use with this device.

This equipment has been tested and found to comply with the limits for a Class B digital device, pursuant to part 15 of the FCC Rules. These limits are designed to provide reasonable protection against harmful interference in a residential installation. This equipment generates, uses and can radiate radio frequency energy and, if not installed and used in accordance with the instructions, may cause harmful interference to radio communications. However, there is no guarantee that interference will not occur in a particular installation. If this equipment does cause harmful interference to radio or television reception, which can be determined by turning the equipment off and on, the user is encouraged to try to correct the interference by one or more of the following measures:

- Reorient or relocate the receiving antenna.
- Increase the separation between the equipment and receiver.
- Connect the equipment into an outlet on a circuit different from that to which the receiver is connected.
- Consult the dealer or an experienced radio/TV technician for help.

The device has been evaluated to meet general RF exposure requirement.

To maintain compliance with FCC's RF exposure guidelines, this equipment should be installed and operated with a minimum distance of 20cm between the radiator and your body.