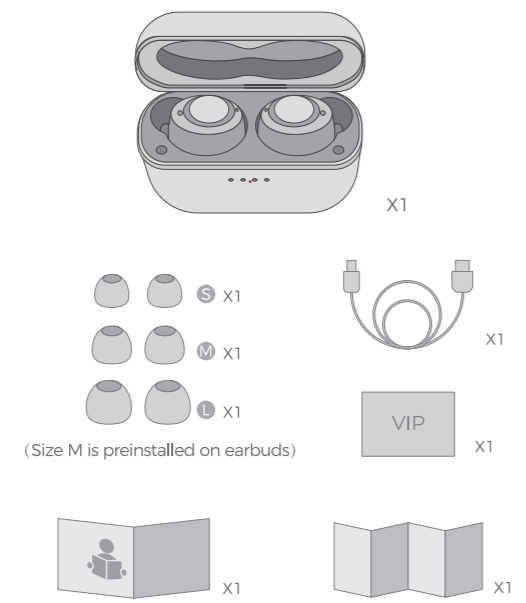
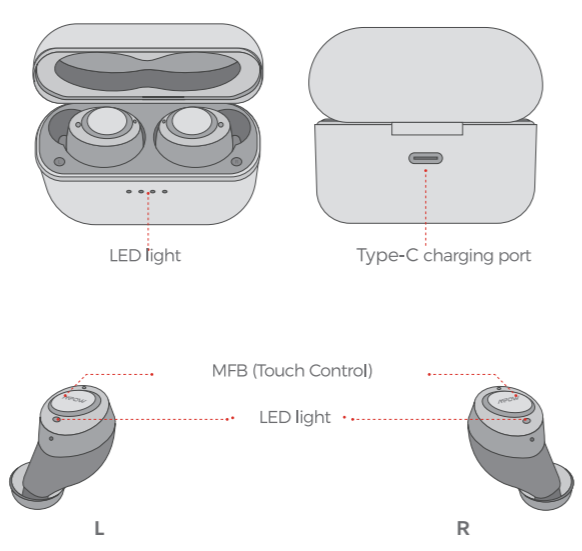




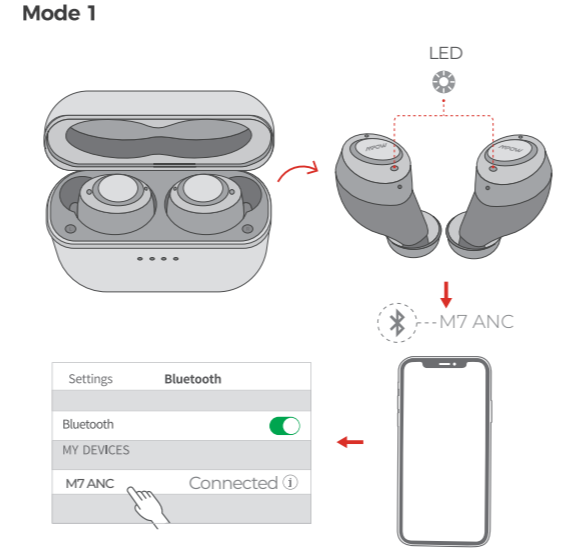
**PACKING LIST**



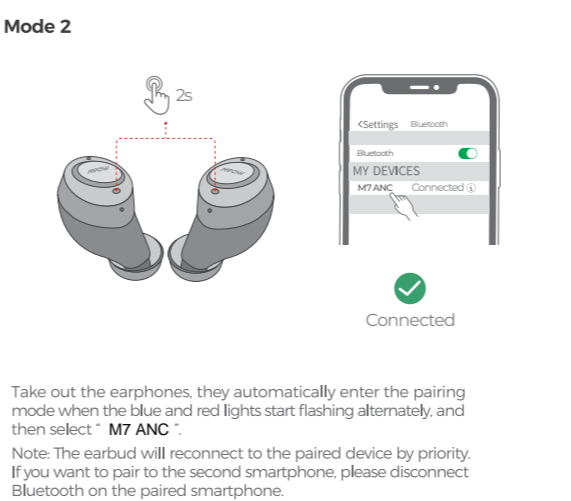
**DIAGRAM**



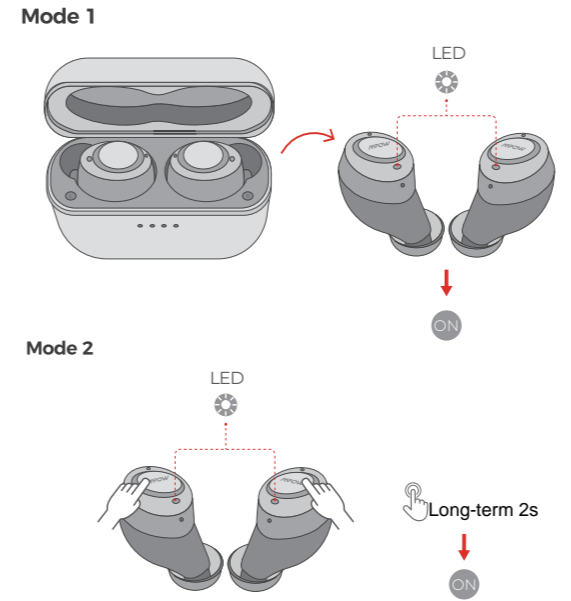
**Pairing**



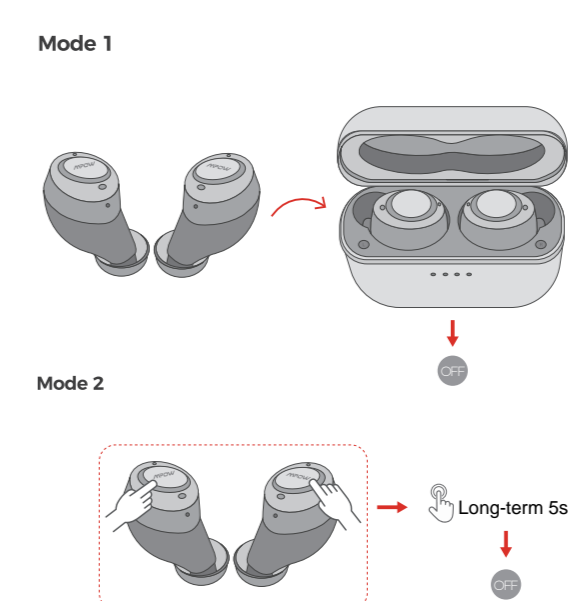
**Pairing**



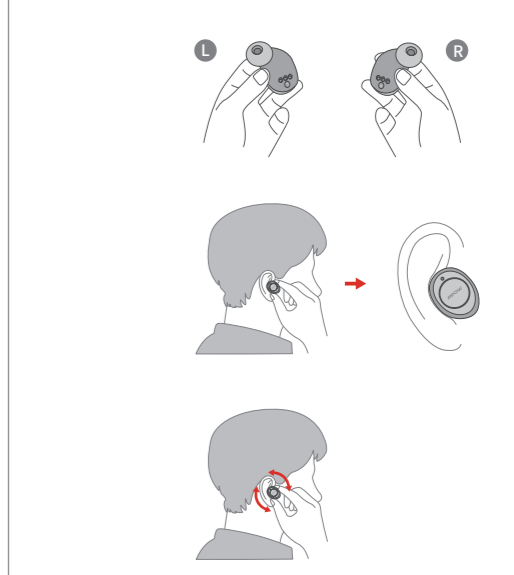
**ON**



**OFF**



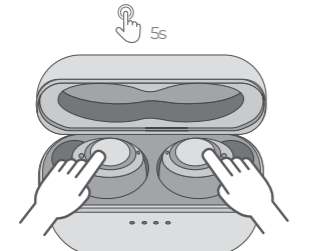
**How to wear earphones**



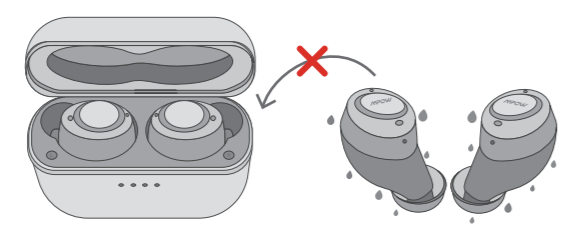
**How to use the touch control of the earphone**

- Volume up / down Touch the MFB button once
- Play / Pause Music Touch the MFB button twice
- Touch the song forward / backward MFB button three times
- Answering an incoming call Touch the MFB button twice
- Hang up the call Touch the MFB button twice
- Reject incoming call Press and hold the MFB button for 2 seconds while receiving an incoming call
- Turn ANC on / off Press and hold the MFB button on the L side for 2 seconds
- Ambient mode AMNFCB Press and hold Obontan in 2 seconds
- Start voice assistant Press and hold the MFB button on the R side for 2 seconds

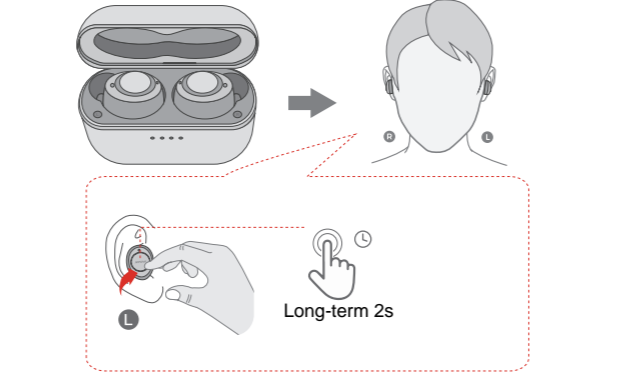
**Reset**



**If the earphone gets wet**

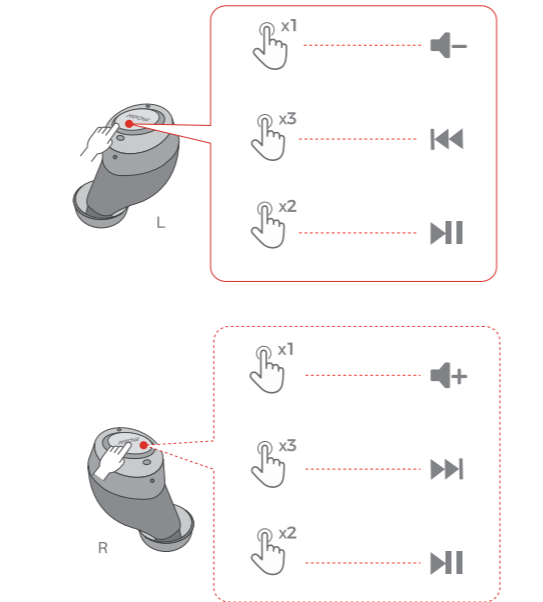


**ANC (Noise Canceling) / Ambient Mode**

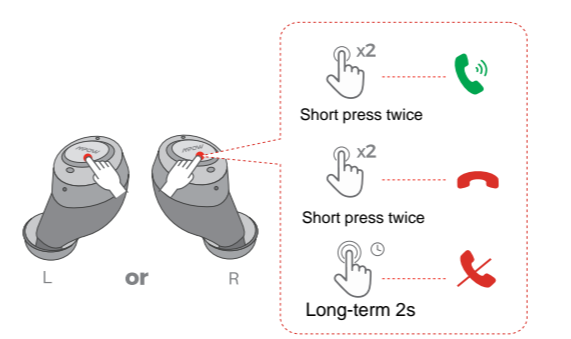


<A ear N mo C (adok and te messenger noi me, Akinyabin Eseritron Ogun) at the edge of the m-press and hold the left earphone for 2 seconds to press AN o C I like the time when I rub it on my ears. I will. By pressing and holding for 2 seconds twice, ANC  
You can capture the surrounding sounds by setting Abin Ebin Eton Motomodo to Doon.  
This is a convenient function when you want to pay attention to the surrounding conditions or when you have a conversation.  
Operation method: Press and hold Einyatohomonoo on the left side for a second.  
(Switches in the order of ambient mode ANC on ANC off)  
note: No. I'm using the AN's C key for the messenger, and the machine is Noh. With your ears, you can use the power source when you don't like it. ANC is turned off each time you listen to it.

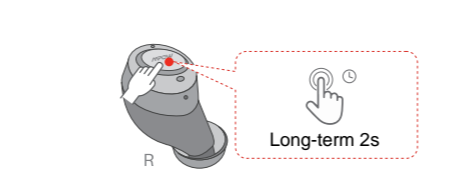
**MUSICS**



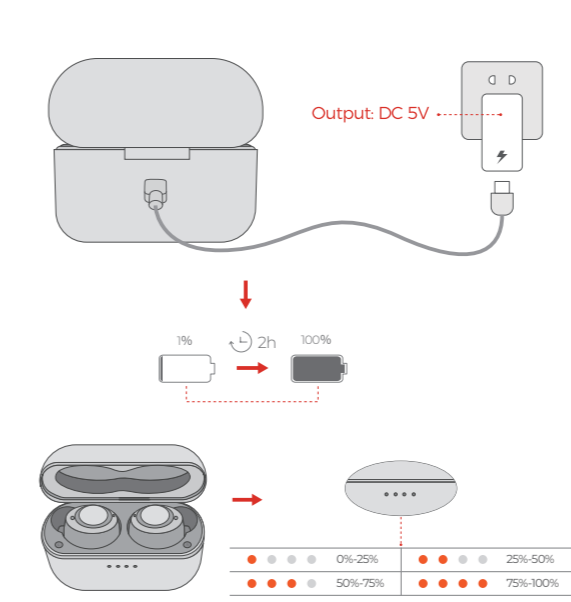
**Incoming call**



**Launch voice assistant**



**CHARGING**



**CORRECT DISPOSAL OF THIS PRODUCT**

( Waste Electrical& Electronic Equipment )  
This Marking shown on the product or its literature indicate that it should not be disposed with other household wastes at the end of its working life.  
To prevent possible harm to the environment or human health from uncontrolled waste disposal, please separate this from other types of wastes and recycle it responsibly to promote the sustainable reuse of material resources. Household user should contact either the retailer where they purchased this product, or their local government office, for details of where and how they can take this item for environmentally safe recycling.  
Business users should contact their supplier and check the terms and conditions of the purchase contract. This product should not be mixed with other commercial wastes for disposal.

**FCC STATEMENT**

Any Changes or modifications not expressly approved by the party responsible for compliance could void the user's authority to operate the equipment.  
This device complies with part 15 of the FCC Rules. Operation is subject to the following two conditions: (1) This device may not cause harmful interference, and (2) This device must accept any interference received, including interference that may cause undesired operation.  
Note: This equipment has been tested and found to comply with the limits for a Class B digital device, pursuant to part 15 of the FCC Rules. These limits are designed to provide reasonable protection against harmful interference in a residential installation. This equipment generates, uses and can radiate radio frequency energy and, if not installed and used in accordance with the instructions, may cause harmful interference to radio communications. However, there is no guarantee that interference will not occur in a particular installation. If this equipment does cause harmful interference to radio or television reception, which can be determined by turning the equipment off and on, the user is encouraged to try to correct the interference by one or more of the following measures:  
—Reorient or relocate the receiving antenna.  
—Increase the separation between the equipment and receiver.  
—Connect the equipment into an outlet on a circuit different from that to which the receiver is connected.  
—Consult the dealer or an experienced radio/TV technician for help.  
**FCC Radiation Exposure Statement:**  
This equipment complies with FCC radiation exposure limits set forth for an uncontrolled environment. This transmitter must not be co-located or operating in conjunction with any other antenna or transmitter.