

MPOW
DREAM·EXPLORE·INSPIRE

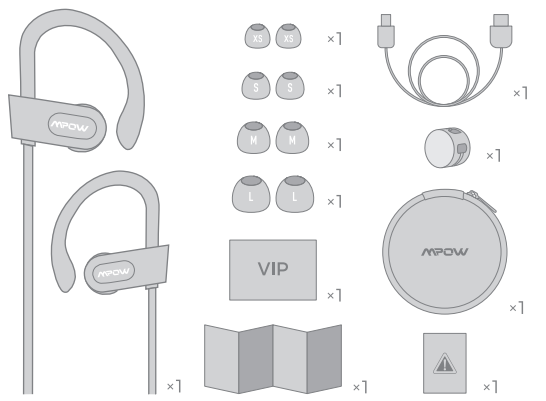
MPOW FLAME SPORT WIRELESS EARPHONES

MODEL : BH088F

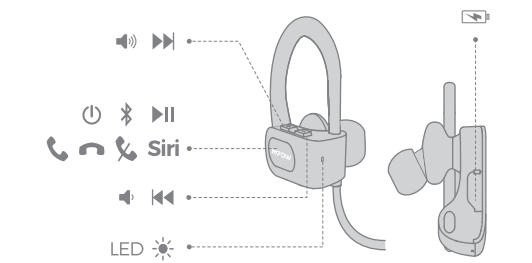


We are appreciate for purchasing our new Mpow Flame product. This guide contains instructions for setting up and using your Mpow Flame easily.

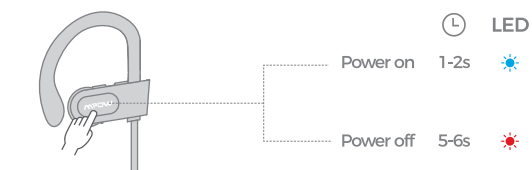
Package List



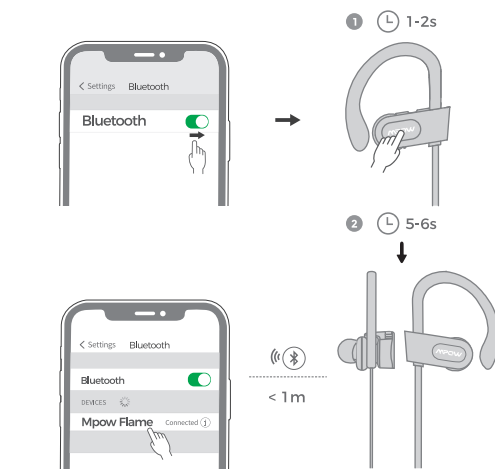
Diagram



Power ON / OFF



How To Pair



1 First use

1. Turn on the Bluetooth function on your phone.
2. Power it on, then it will enter the pairing mode automatically. Red and blue lights will start flashing alternately with the voice "Pairing".
3. Search for the Bluetooth devices and select "Mpow Flame"(Enter the code "0000" if needed).
4. When pairing is successful, the blue light will start flashing slowly. You will also hear the voice "Connected".

2 Pair to another device

1. In the state of shut-down, hold on the MFB for 5-6 seconds or so. Don not release it until the red and blue lights start flashing alternately with the voice "Pairing".
2. The rest goes the same as above.

1 Erste Verwendung

1. Schalten Sie die Bluetooth-Funktion Ihres Handys ein.
2. Schalten Sie sich ein und wechseln Sie automatisch in den Paarungs-Modus. Nach dem Loslassen der Taste muss die Kontrolllampe Rot und Blau abwechselnd blinken mit der Stimme "Pairing".
3. Suchen Sie die Bluetooth-Geräte und wählen Sie "Mpow Flame" (Geben Sie ggf. den Passworts "0000" ein).
4. Wenn die Kopplung erfolgreich ist, beginnt das Blau Kontrolllampe langsam zu blinken. Sie hören auch die Stimme "Connected".

2 Koppeln mit einem anderen Gerät

1. Schalten Sie den gekoppelten Gerät aus, und dann drücken Sie die MFB ca. 5-6 Sekunden lang, bis die Roten und Blauen Kontrolllampe abwechselnd mit der Stimme "Pairing" blinken, um mit einem anderen Gerät zu koppeln.
2. Der Rest geht genauso wie oben.

1 Première utilisation

1. Activer la fonction Bluetooth sur votre téléphone.
2. Allumez, il passera automatiquement en mode de couplage. Vous pouvez voir les lumières rouge et bleu commencer à clignoter en alternance avec la voix "Pairing".
3. Recherchez les appareils Bluetooth et sélectionnez "Mpow Flame" (entrez le code "0000" si nécessaire).
4. Si l'appariement est réussi, la lumière bleu commence à clignoter lentement. Vous entendrez également la voix "Connected".

2 Appairer à un autre appareil

1. État éteint, maintenez le MFB enfoncé pendant environ 5-6 secondes jusqu'à ce que les voyants rouge et bleu se mettent à clignoter en alternance avec la voix "Pairing".
2. Le reste va comme ci-dessus.

1 Primer uso

1. Encienda la función Bluetooth en su teléfono.
2. Encienda y entrará automáticamente en el modo de emparejamiento. Puede ver que las luces naranja y blanca comienzan a parpadear alternativamente con la voz "Pairing".

3. Busque los dispositivos Bluetooth y seleccione "Mpow Flame" (ingrese el código "0000" si es necesario).
4. Si la sincronización es exitosa, la luz blanca comienza a parpadear lentamente. También escucharás la voz "Connected".

2 Emparejar a otro dispositivo

1. Apague el estado, mantenga presionado el MFB durante aproximadamente 5-6 segundos hasta que las luces naranja y blanca empiecen a parpadear alternativamente con la voz "Pairing".
2. El resto va igual que el anterior.

1 Primo utilizzo

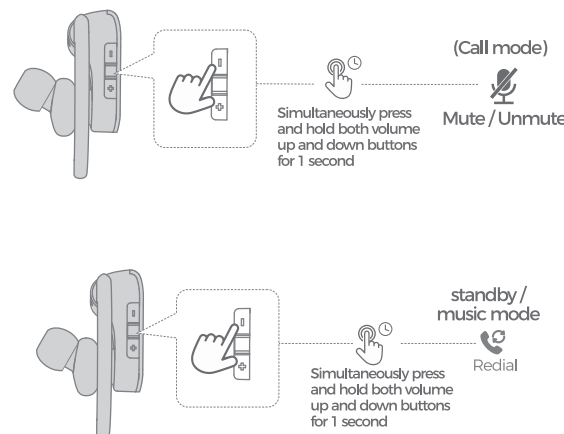
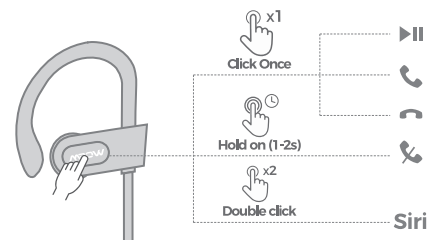
1. Attivare la funzione Bluetooth sul telefono.
2. Accendere poi entrerà automaticamente in modalità di collegare. Potrebbe vedere l'indicatore rosso e blu che iniziano a lampeggiare alternativamente con la voce "Pairing".
3. Cercare i dispositivi Bluetooth e seleziona "Mpow Flame" (inserisci il codice "0000" se necessario).
4. Se il collegamento ha avuto successo, l'indicatore blu inizia a lampeggiare lentamente. Sentirai anche la voce "Connected".

2 Collegare ad un altro dispositivo

1. Spegner e gli auricolari, tenere premuto il MFB per circa 5-6 secondi fino a quando l'indicatore rosso e blu iniziano a lampeggiare alternativamente con la voce "Pairing".
2. Il resto va come sopra.

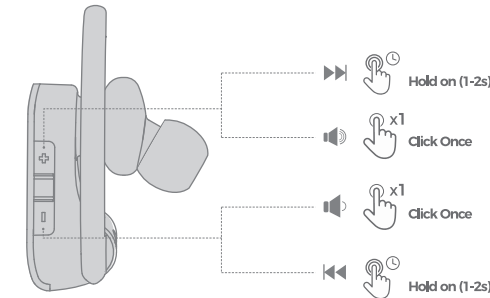
Play / Pause / Answer / Hang Up / Reject / Siri / Mute / Redial

Spielen / Pause / Antworten / Auflegen / Ablehnen / Stumm / Wahlwiederholung
Play / Pause / Réponse / Raccrocher / Rejeter / Muet / Rappel
Reproducir / Pausa / Contestar / Colgar / Rechazar / Mudo / Remarcar
Riproduzione / Pausa / Risposta / Riaggancia / Rifiuta / Muto / Riproduzione

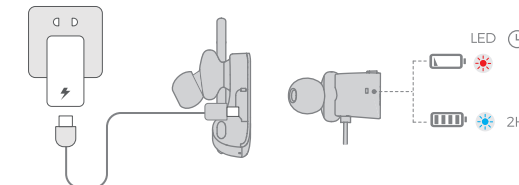


Volume Control / Music Control

Lautstärkereglung / Musiksteuerung
Contrôle de Volume / Contrôle de la Musique
Control de Volume / Control de la Musica
Controllo del Volume / Controllo della Musica



Charge Battery



Correct Disposal of This Product

(Waste Electrical & Electronic Equipment)
This Marking shown on the product or its literature, indicate that it should not be disposed with other household wastes at the end of its working life.

To prevent possible harm to the environment or human health from uncontrolled waste disposal, please separate this from other types of wastes and recycle it responsibly to promote the sustainable reuse of material resources.
Household user should contact either the retailer where they purchased this product, or their local government office, for details of where and how they can take this item for environmentally safe recycling.
Business users should contact their supplier and check the terms and conditions of the purchase contract. This product should not be mixed with other commercial wastes for disposal.

FCC Statement

Any Changes or modifications not expressly approved by the party responsible for compliance could void the user's authority to operate the equipment.

This device complies with part 15 of the FCC Rules. Operation is subject to the following two conditions: (1) This device may not cause harmful interference, and (2) this device must accept any interference received, including interference that may cause undesired operation.

FCC Radiation Exposure Statement:

This equipment complies with FCC radiation exposure limits set forth for an uncontrolled environment.

Notification

1. Please fully charge it if it was going to lay idle for a long time and place it in a cool and dry place. Please recharge it each 2 months for storage.
2. Please fully charge it for the first use.

Benachrichtigung

1. Wenn Kopfhörer für lange Zeit nicht verwendet wird, laden Sie bitte es voll auf und bewahren Sie es an einem kühlen und trockenen Platz. Bitte laden Sie es alle 2 Monate zur Lagerung auf.
2. Bitte laden Sie es für den ersten Gebrauch auf.

Notificación

1. Por favor, cárguelo por completo si va a estar inactivo durante mucho tiempo, y colóquelo en un lugar fresco y seco. Por favor recárguelo cada 2 meses para su almacenamiento.
2. Por favor, cárguelo completamente para el primer uso.

Notificazione

1. Si prega di caricarlo completamente se stava per essere rimasto inattivo per lungo tempo e metterlo in un luogo fresco e asciutto. Si prega di ricaricare ogni 2 mesi per l'archiviazione.
2. Si prega di caricarlo completamente per il primo utilizzo.

Notification

1. Veuillez le charger complètement s'il allait rester inactif pendant un certain temps et le placer dans un endroit frais et sec. Veuillez le recharger tous les 2 mois pour le stockage.
2. Chargez-le complètement lorsque vous l'utilisez pour la première fois.

www.xmpow.com/support@xmpow.com
MPOW TECHNOLOGY CO., LTD
Copyright © MPOW Inc. All rights reserved.