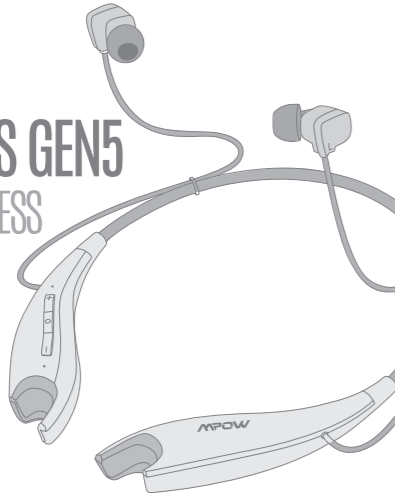


MPOW
DREAM·EXPLORE·INSPIRE

MPOW JAWS GEN5

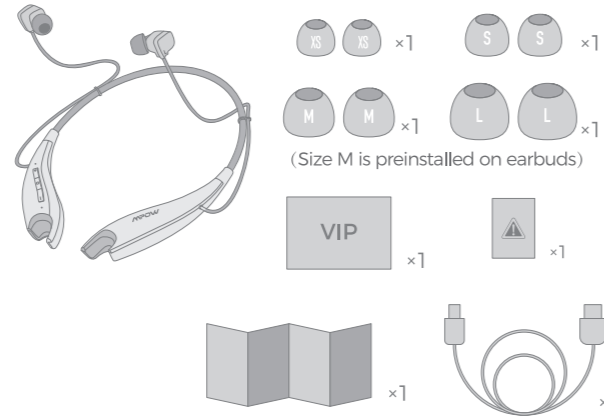
NECKBAND WIRELESS EARPHONES

MODEL: BH025D

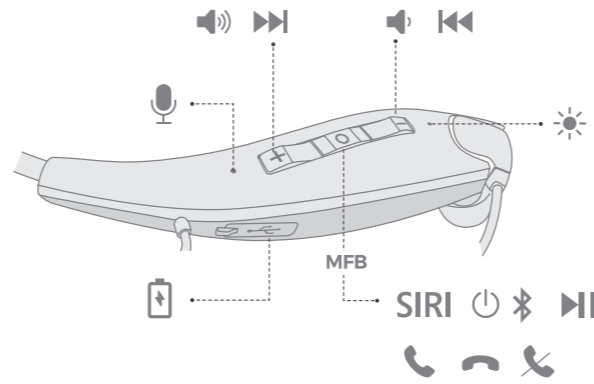


We are appreciated for purchasing our Mpow Jaws Gen5. This guide contains instructions for setting up and using your Mpow Jaws Gen5 easily.

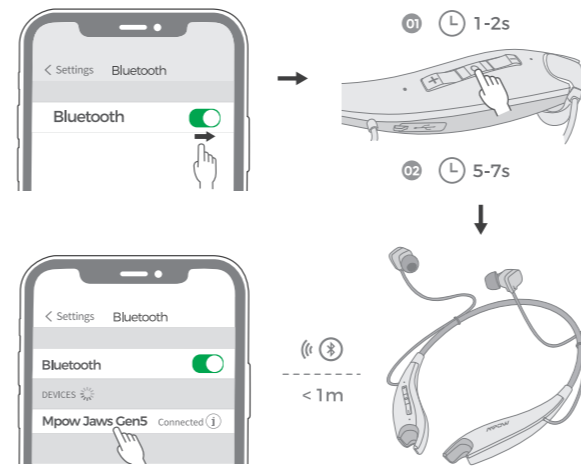
Package List



Diagram



How To Pair



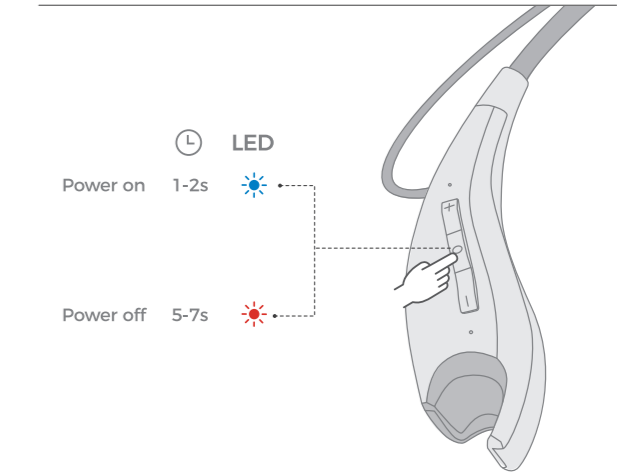
1 First use

1. Turn on the Bluetooth function on your phone.
2. Power it on, then it will enter the pairing mode automatically. Red and blue lights will start flashing alternately with the voice "Pairing"
3. Search for the Bluetooth devices and select "Mpow Jaws Gen5" (Enter the code "0000" if needed).
4. When pairing is successful, you will hear the voice "Connected".

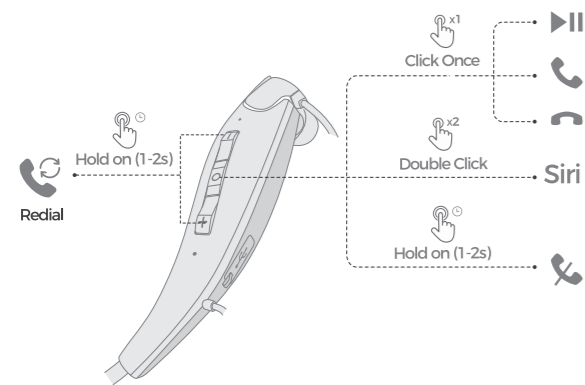
2 Pair to another device

1. In the state of shut-down, press and hold on the MFB button for 5-7 seconds or so. Do not release it until the red and blue lights start flashing alternately with the voice "Pairing".
2. The rest goes the same as above.

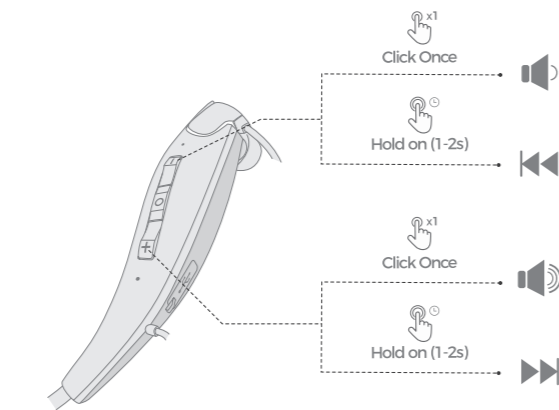
Power ON / OFF



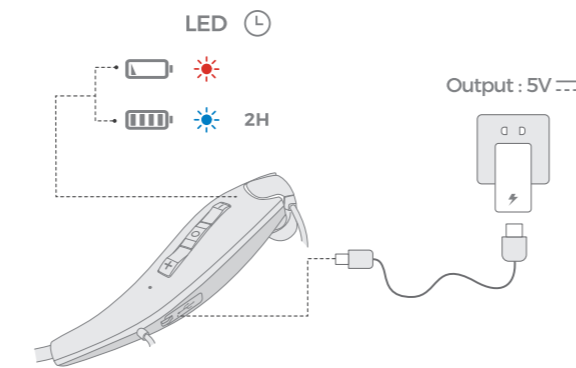
Play / Pause / Answer / Hang Up / Activate Siri / Reject / Redial



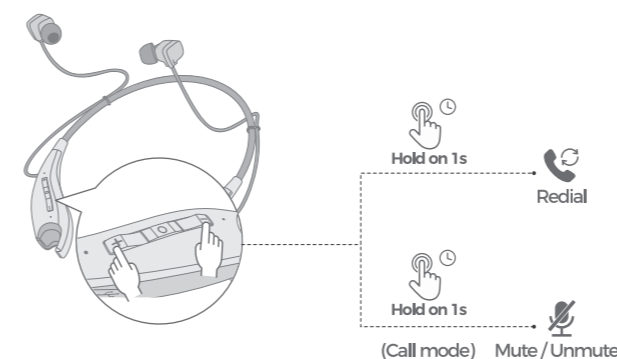
Volume Control / Music Control



Charge Battery



Redial / Mute



Correct Disposal of This Product

(Waste Electrical & Electronic Equipment)
This Marking shown on the product or its literature, indicate that it should not be disposed with other household wastes at the end of its working life.

To prevent possible harm to the environment or human health from uncontrolled waste disposal, please separate this from other types of wastes and recycle it responsibly to promote the sustainable reuse of material resources. Household user should contact either the retailer where they purchased this product, or their local government office, for details of where and how they can take this item for environmentally safe recycling.

Business users should contact their supplier and check the terms and conditions of the purchase contract. This product should not be mixed with other commercial wastes for disposal.

FCC Statement

Any Changes or modifications not expressly approved by the party responsible for compliance could void the user's authority to operate the equipment.

This device complies with part 15 of the FCC Rules. Operation is subject to the following two conditions:

- (1) This device may not cause harmful interference, and (2) this device must accept any interference received, including interference that may cause undesired operation.

FCC Radiation Exposure Statement:

This equipment complies with FCC radiation exposure limits set forth for an uncontrolled environment.

Notification

1. Please fully charge it if it was going to lay idle for a long time and place it in a cool and dry place. Please recharge it each 2 months for storage.
2. Please fully charge it for the first use.