

# Outdoor IP-67 Omni Antenna For LoRa Band

863~928 / 902~928 MHz

**P/N:OA-LR-07-01-CN**



## ✓ RF Specification

- Frequency Range: 863~928 / 902~928 MHz
- Polarization: Linear, Vertical
- HPBW / Horizontal: 360°
- HPBW / Vertical: 95°
- Peak Gain: 1.0 / 1.0 dBi Max.
- Efficiency: 66% / 73% Min.
- VSWR: 2.0 Max.:1
- Power Handling: 2W(cw)
- Impedance: 50 Ohms
- Connector: N Plug

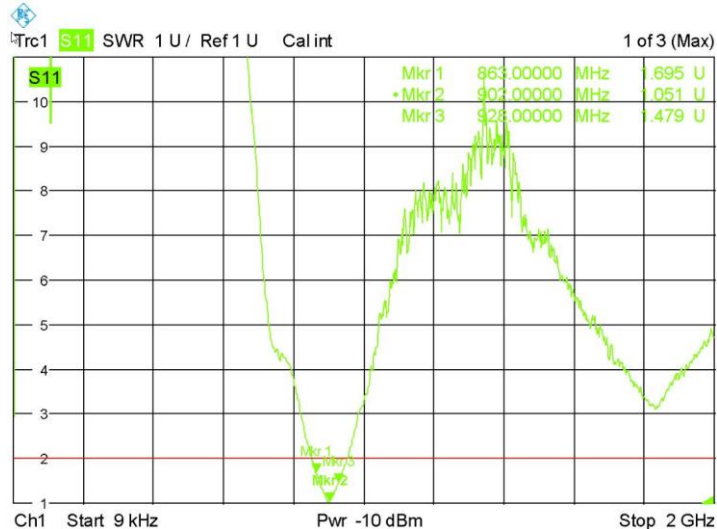
## ✓ Environmental & Mechanical Characteristics

- Temperature: -40°C to +70°C
- Humidity: 95% @55°C
- Antenna Housing Color: White
- Antenna Housing Material: ASA
- Weight : 60.5 gw
- Dimensions: 178.0(L)x22.0(W)mm

# Performance Summary

## VSWR

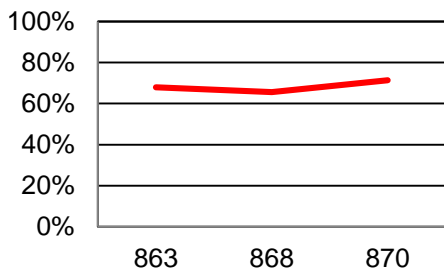
Frequency(MHz)	863~870	902~928
VSWR	2.0 Max. : 1	



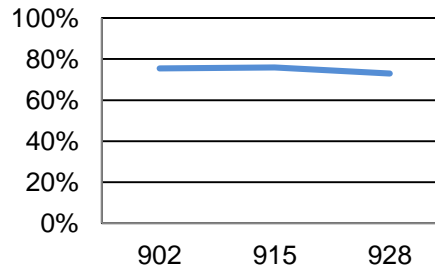
## Gain Table

### EFFICIENCY

#### 863MHz~870MHz

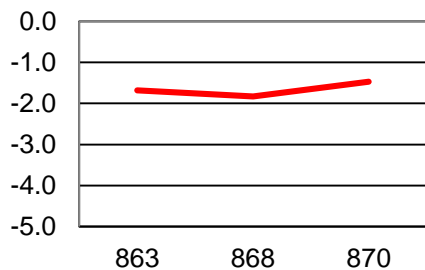


#### 902MHz~928MHz

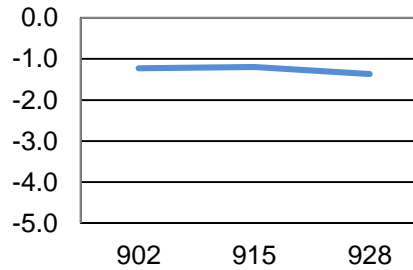


### Average Gain

#### 863MHz~870MHz

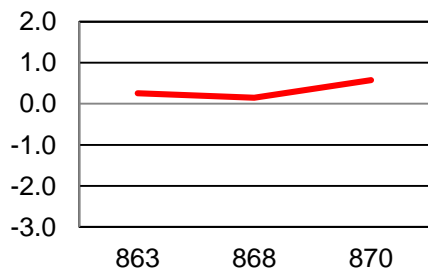


#### 902MHz~928MHz

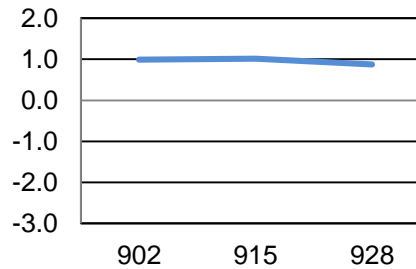


### Peak Gain

#### 863MHz~870MHz



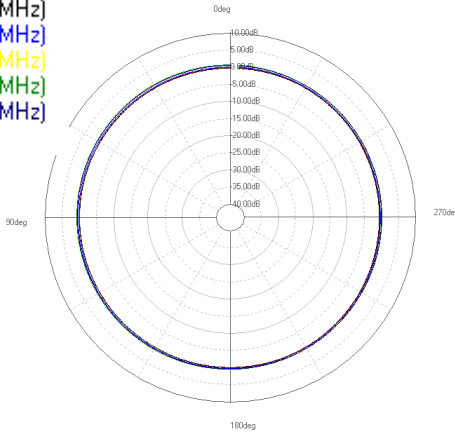
#### 902MHz~928MHz



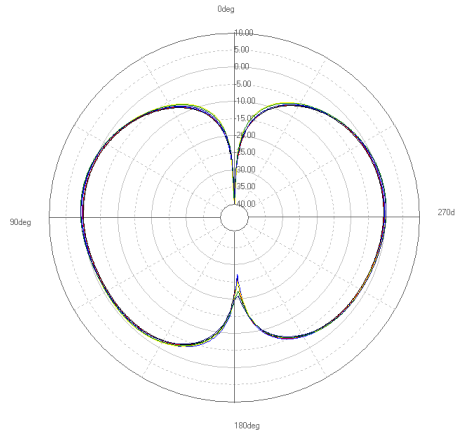
# Radiation Pattern

- Legend**
- 863(MHz)
  - 868(MHz)
  - 870(MHz)
  - 902(MHz)
  - 915(MHz)
  - 928(MHz)

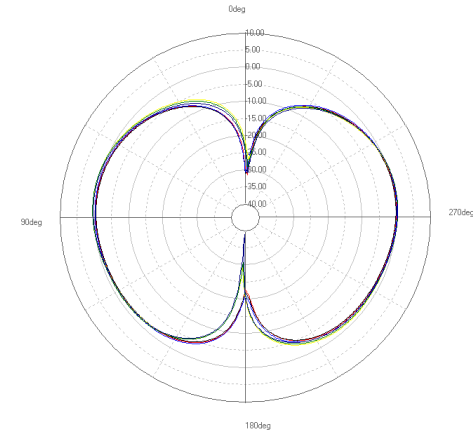
XY-plane



YZ-plane



ZX-plane



# Dimension(unit: mm)

