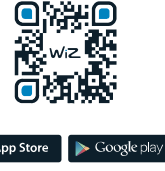




QUICK START GUIDE


- Download our free WIZ app. Name where you'll put your lights.

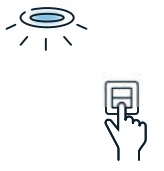



Search for "WIZ Lighting".
- Install your WIZ light.


- Create your first room.


- Put in your Wi-Fi password. Start pairing.


- Flick your switch off and on quickly until there's a cool light pulse. It'll then turn white.


- Have fun!



Have any problems with set up? [Check the troubleshooting section](#)



Love your WIZ product?
Share it with world!

Give our WIZ App a 5★ rating

Follow us on Facebook and Twitter

Share your moments on Instagram

Check out more WIZ lights for your home

☆☆☆☆☆

f t

Instagram icon


Home icon

wiz.world

封底

TROUBLESHOOTING

Make sure each light you want to pair is in pairing mode




For security reasons, pairing can only happen if the light is actively waiting. You can put any WIZ light in pairing mode by switching it OFF and ON until it starts pulsing in Blue (for WIZ Colors) or in Cool White (for WIZ Whites). Once the lamp is in pairing mode, let it pulse for the whole pairing.

Pairing mode happens after 3x ON if the light has never been paired before, and after 5x ON if the light has been paired and has not been deleted in the app.

If the lamp is in pairing mode and you encounter problems, it is likely to be a network issue. Check the next steps to solve it.


Make sure each device is within range of the same Wi-Fi source



Pairing can only happen if your phone/tablet and your light are in range of the same Wi-Fi source. The Wi-Fi source is usually the router, or the internet box, or sometimes a repeater.

Pairing is not possible over 3G/4G.

Select the right Wi-Fi band




WIZ lights work on 2.4GHz Wi-Fi – the most common standard and the best for wider range coverage.

If your router provides both 2.4GHz and 5GHz, please connect your phone/tablet to the 2.4GHz band for pairing.

If you are not sure which Wi-Fi your phone/tablet is connected to, go to its Settings, then Wi-Fi, and check the available Wi-Fi networks.


Check the available Wi-Fi networks



Most dual-band routers clearly display two different network names (e.g. my Wi-Fi and myWi-Fi-5GHz), but some dual-band routers use the same network name for both bands.


In such cases, check the router settings and either rename the networks to distinguish between them or temporarily disable the 5GHz band, then try pairing again. The router settings can usually be accessed by typing <http://192.168.1.1> in any web browser of a device connected to your Wi-Fi.

Test your internet connectivity



WIZ needs internet access to pair your lights. Try accessing any website from your phone/tablet while you are near your WIZ light to make sure the internet connectivity is working.

Double-check your Wi-Fi password



If you have entered an incorrect password, your lights will not be able to join your Wi-Fi network. In this case, the lights blink in a regular pattern in Red (or Warm White for WIZ Whites) after a few seconds when you start the pairing process. Please double-check your password and try again.

If you have any other issues, contact support through chat on the WIZ App or check the FAQ on: <https://www.wiz.world/support/>

Z1503283




Let's get started

#ConnectedLight

封面

0 1 2 3 4 5 6 7 8 9 10 11 12 13 14 15 16 17 18 19 20 21 22 23 24 25



WIZ

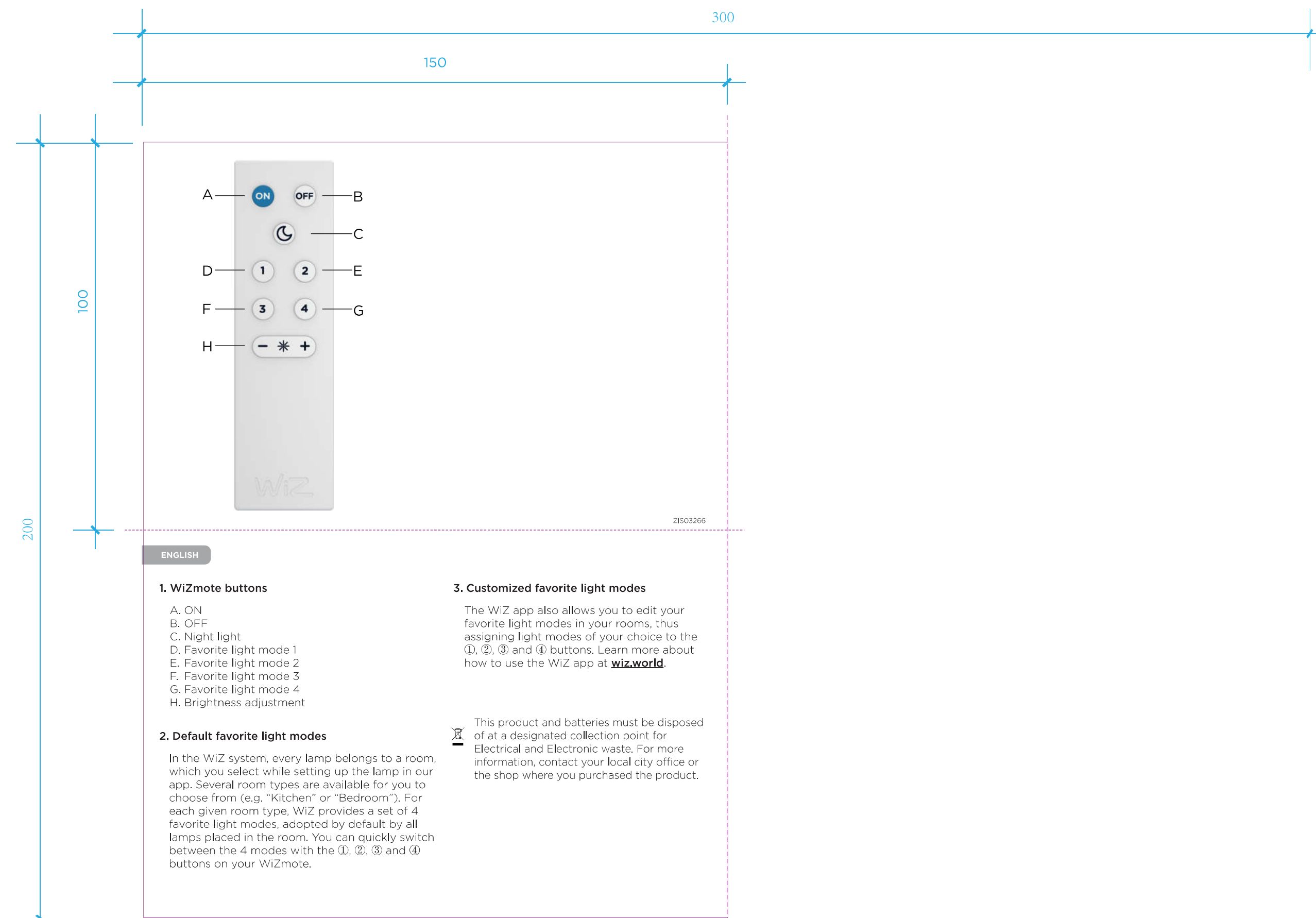
MKT Ref: Quick start & troubleshooting-downlight-US
TAO Ref: Z1503283
Date: 2017-06-27

Box size
150x100mm

Colors

| | | | | | | |
|-----------------|--------|---|---|---|---|--------|
| P Process BlueC | P 5395 | C | M | Y | K | Diecut |
|-----------------|--------|---|---|---|---|--------|

材质: 规格: 128g 哑铜纸/彩色印刷/三折页



ENGLISH

1. WIZmote buttons

- A. ON
- B. OFF
- C. Night light
- D. Favorite light mode 1
- E. Favorite light mode 2
- F. Favorite light mode 3
- G. Favorite light mode 4
- H. Brightness adjustment

2. Default favorite light modes

In the WIZ system, every lamp belongs to a room, which you select while setting up the lamp in our app. Several room types are available for you to choose from (e.g. "Kitchen" or "Bedroom"). For each given room type, WIZ provides a set of 4 favorite light modes, adopted by default by all lamps placed in the room. You can quickly switch between the 4 modes with the ①, ②, ③ and ④ buttons on your WIZmote.

3. Customized favorite light modes

The WIZ app also allows you to edit your favorite light modes in your rooms, thus assigning light modes of your choice to the ①, ②, ③ and ④ buttons. Learn more about how to use the WIZ app at wiz.world

This product and batteries must be disposed of at a designated collection point for Electrical and Electronic waste. For more information, contact your local city office or the shop where you purchased the product.



Important Safety Compliance and Warranty information

wiz.world

ENGLISH

WARNING: The installation of this kit must comply with the standard and regulation in force. Should you have any doubt, please seek advice from a professional electrician.

01

1. Safety instructions

Always respect electrical specifications described on product label.
The product is for indoor use only.
The light source of this luminaire is not replaceable: when the light source reaches its end of life the whole luminaire shall be replaced.

Additional requirement for Bathroom Installation
The electrical circuit must be protected with a 10A fuse.
This product must be connected to a circuit protected by a residual current protective device with rated residual operating current not exceeding 30mA.

Warning before installation
Always disconnect from main supply.
Repairs should only be carried out by qualified person and using genuine spare parts.
Risk of fire or electric shock. LED Retrofit Kit installation requires knowledge of luminaires electrical systems. If not qualified, do not attempt installation. Contact a qualified electrician.
Risk of fire or electric shock. Install this kit only in the luminaires that have the construction features and dimensions shown in the photographs and/or drawings and where the input rating of the retrofit kit does not exceed the input rating of the luminaire.
Do not make or alter any open holes in an enclosure of wiring or electrical components during kit installation.
To prevent wiring damage or abrasion, do not expose wiring to edges of sheet metal or other sharp objects.

2. Installation Steps (See drawing)

The spot with IR receiver is the one receiving the message from IR Remote Controller.
Notice: The housing must be stainless steel

For products controlled with IR remote controller, make sure that the IR receiver is not covered by any obstacle.

3. Usage

The product can be operated by the provided remote controller. Launch WIZ app to connect the product (Please refer to Quick Start Guide for more detail operation of WIZ app).
Warning: You may experience unexpected results when using WIZ products with dimmer switches e.g. at the 40-50% range. For the best WIZ experience, please make sure that your dimmers are set to maximum to avoid damaging your WIZ products. If you would like to dim your WIZ lights, you can do so through our WIZ smartphone app or infrared remote control.

4. Servicing

How to clean the product
Clean the visible part of the bulb and the metal rim with a soft dust cloth (could be lightly moisten if necessary).
Never use alcohol, solvent or products of a similar nature.
Wait until the product is completely dry before reconnecting it to the main supply.

5. Warranty

Warranty is subject to strict conditions of use, for more information, please visit our website: wiz.world/warranty

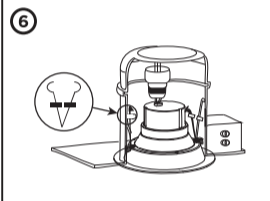
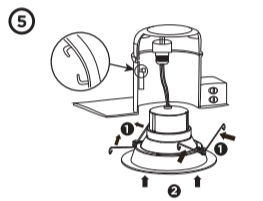
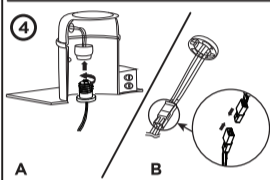
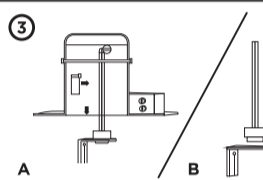
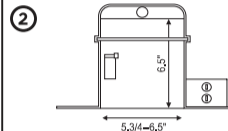
Z1603265



Totem
6IW75WIZRFPBZ
100-130V 50/60Hz 0.28A 16W
6IW75WIZTRFPBZ
100-130V 50/60Hz 0.28A 16W

- [01] x 1
- [02] x 1

wiz.world



CAUTION:

This device complies with Part 15 of the FCC Rules. Operation is subject to the following two conditions: (1) This device may not cause harmful interference, and (2) this device must accept any interference received, including interference that may cause undesired operation.

Modifications not approved by the party responsible for compliance could void user's authority to operate the equipment.

NOTE: This equipment has been tested and found to comply with the limits for Class B digital device, pursuant to part 15 of the FCC Rules. These limits are designed to provide reasonable protection against harmful interference in a residential installation. This equipment generates, uses and can radiate radio frequency energy and, if not installed and used in accordance with the instructions, may cause harmful interference to radio or television reception, which can be determined by turning the equipment off and on, the user is encouraged to try to correct the interference by one or more of the following measures:

- Reorient or relocate the receiving antenna.
- Increase the separation between the equipment and the receiver.
- Connect the equipment into an outlet on a circuit different from that to which the receiver is connected.
- Consult the dealer or an experienced radio/TV technician for help.

MPE Reminding

To satisfy FCC / IC RF exposure requirements, a separation distance of 20 cm or more should be maintained between the antenna of this device and persons during device operation. To ensure compliance, operations at closer than this distance is not recommended.

Users Manual

6IW75WIZRFPBZ, 6IW75WIZTRFPBZ

NOTE:

1. USE THE LAMP UNDER CERTAIN VOLTAGE AND FREQUENCY.
2. KEEP THE LAMP AWAY FROM FLAMMABLE ITEMS.
3. THE LAMP IS RECOMMENDED FOR INDOOR USE.
4. CLEAN THE LAMP WITH A SOFT DUST CLOTH. NEVER USE ALCOHOL, SOLVENT OR PRODUCTS OF A SIMILAR NATURE. WAIT UNTIL THE LAMP IS COMPLETELY DRY BEFORE RECONNECTING IT TO THE MAIN SUPPLY.