

SPECIFICATION FOR APPROVAL

CUSTOMER/PROJECT: X SOLAX

CUSTOMER P.N.: 311601001600

PRODUCT NAME: WIFI ANT

MODEL NO.: 12I001A

SUPPLIER AUTHORIZED SIGNATURE		
PREPARED	CHECKED	APPROVED
Jenny	Steven	Alex

CUSTOMER AUTHORIZED SIGNATURE			
PM	Jenny	QE	sun

Please return to us one copy of "SPECIFICATION FOR APPROVAL" with your approved signature.

ADD: No.358 Liuyuan RD., Baoshan Urban Industrial District., Shanghai, PR.China.

TEL: +86-21-66276925(26/29/35) - 615

Content

content	1
1 Noun explanation	4
2 Test equipment	4
3 Working frequency band	4
4 Test project	5
4.1 VSWR plot	5
4.2 Simth plot	5
4.3 Radiation pattern	5
4.4 Gain & Efficiency	5
5 Antenna parameter	5
5.1 VSWR	5
5.1.1 VSWR plot	5
5.1.2 VSWR data	6
5.2 Simth plot	6
5.3 Radiation pattern	7
5.3.1 H-plane	7
5.3.2 E-plane	8-9
5.4 UGain & Efficiency	10
6 Environmental treatment suggestions	10
7 Impedance matching	10
8 Antenna plan	11
8.1 Antenna dimensional drawing	11
8.2 Coaxial cable length drawing	11



8.3. Connector drawing.....	11
9 Antenna installation guide.....	12
9.1. Antenna installation instructions.....	12
9.2. Coaxical routing	12
10. Other.....	12

1 Noun explanation



dBi	Decibel relative isotropic antenna
Tx	Transmit frequency
Rx	Receive frequency
TRP	Total Radiated Power
TIS	Total Isotropic Sensitivity
VSWR	Voltage Standing Wave Ratio
GSM	Global Service for Mobile communication
DCS	Digital Communication System
CDMA	Code Division Multiple Access
WCDMA	Wideband Code Division Multiple Access

2 Test equipment

network analyzer
 Agilent8960
 SATIMO64 chamber

3 Working frequency band

The yellow Identification is the using band

Band	
(2.4G)	2400MHz~2500MHz
5.8G	5150MHz~5850MHz

4 Test project

4.1 VSWR plot

4.2 Simth plot

4.3 Radiation pattern

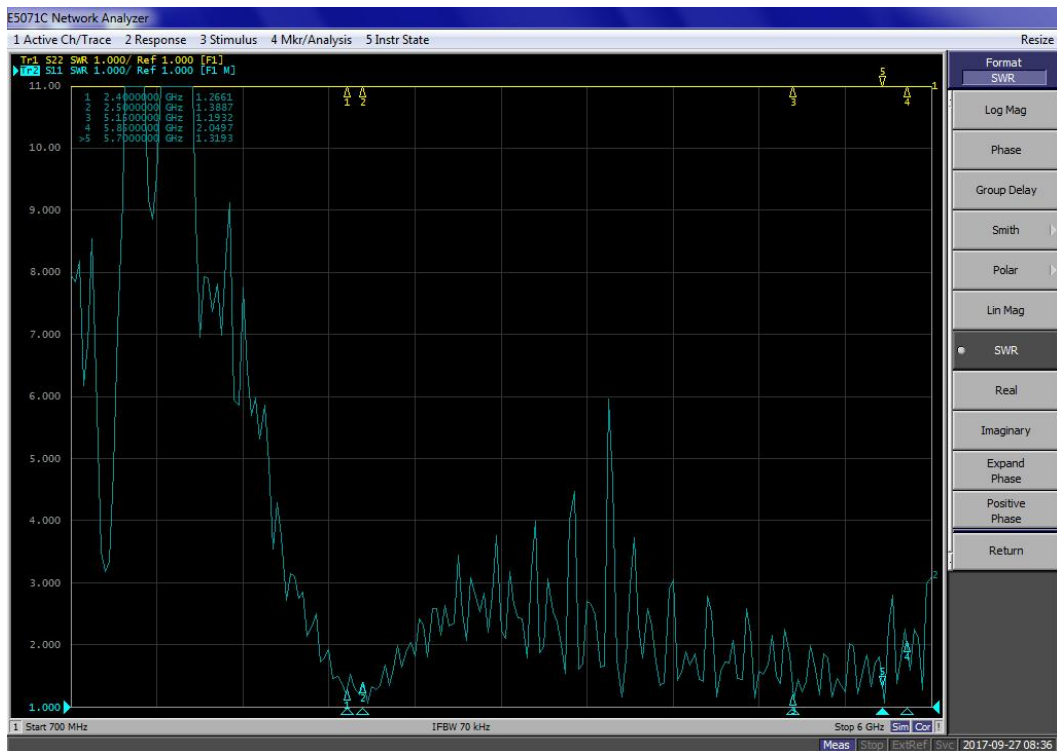
4.4 Gain & Efficiency

4.5 TRP&TIS

5 Antenna parameter

5.1 VSWR

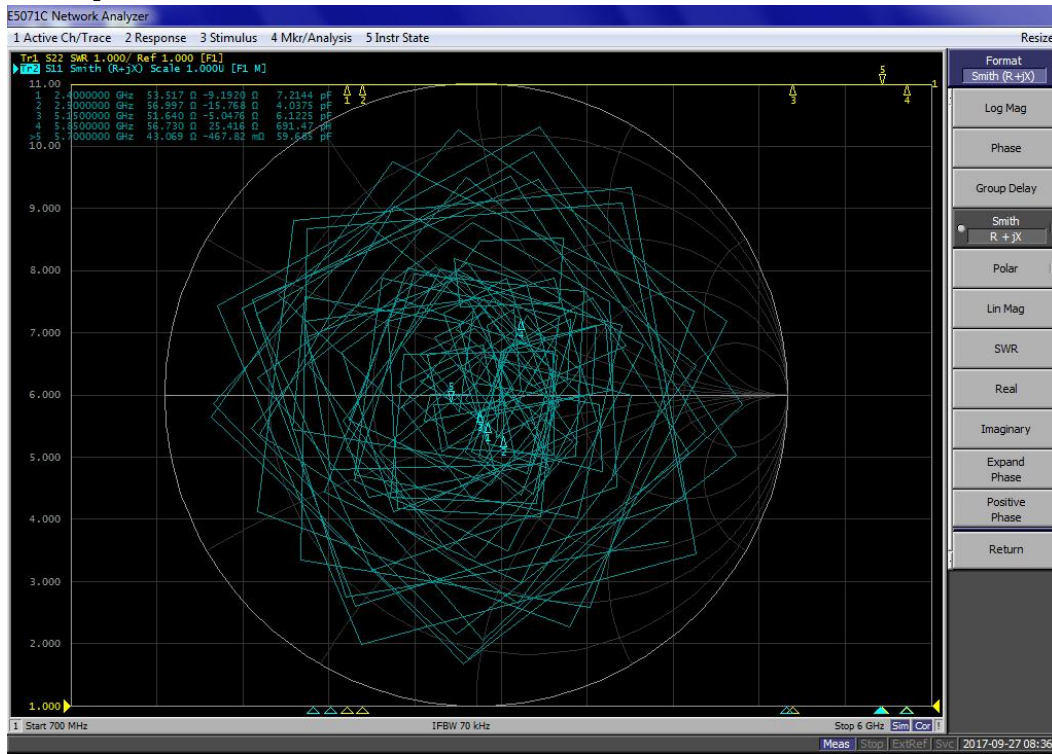
5.1.1 VSWR plot



5.1.2 VSWR data

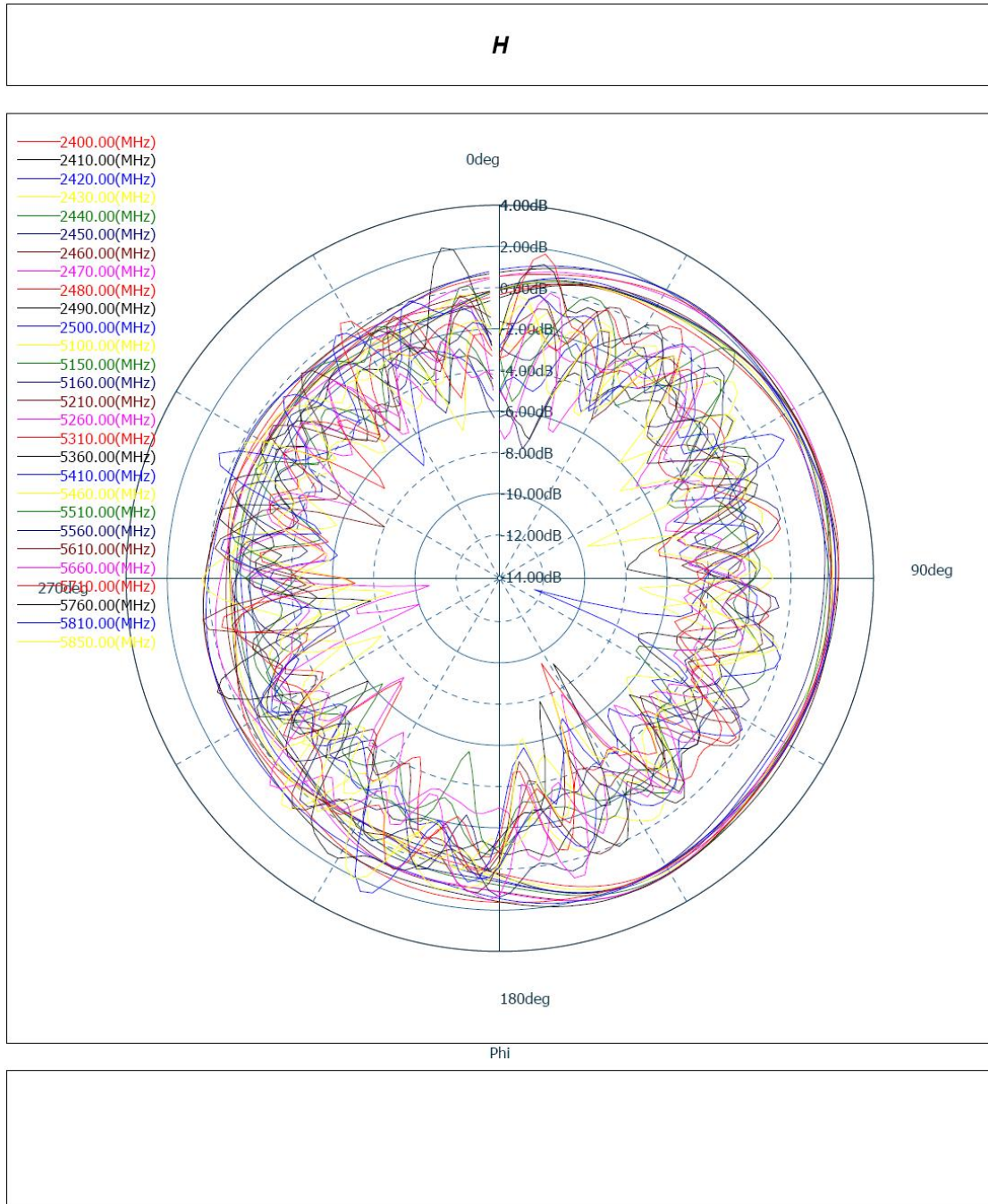
Freq/MHz	2400	2500	5150	5700	5800
VSWR	1.2	1.3	1.1	1.3	2.0

5.2 Smith plot



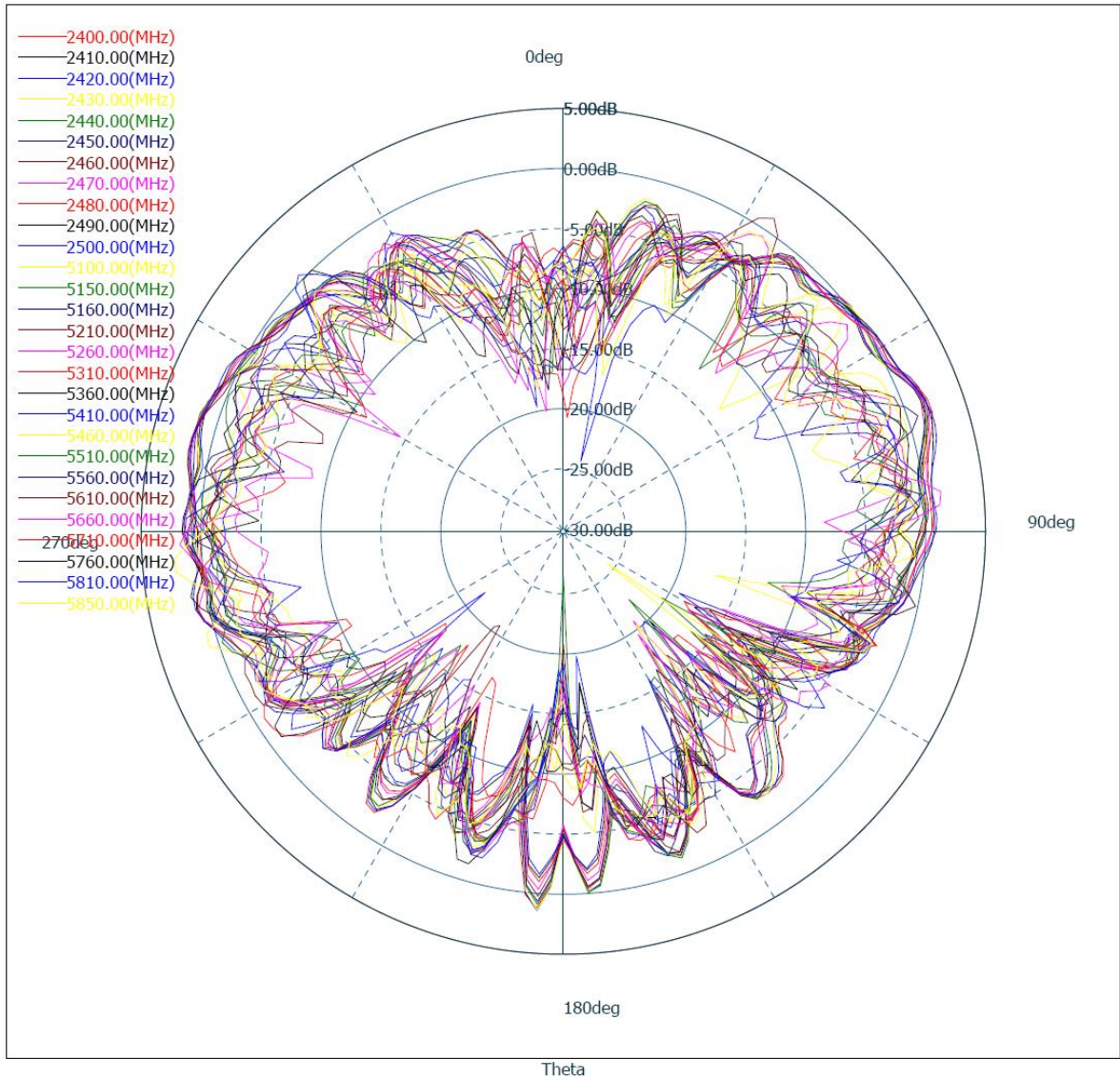
5.3 Radiation pattern

5.3.1 H-plane

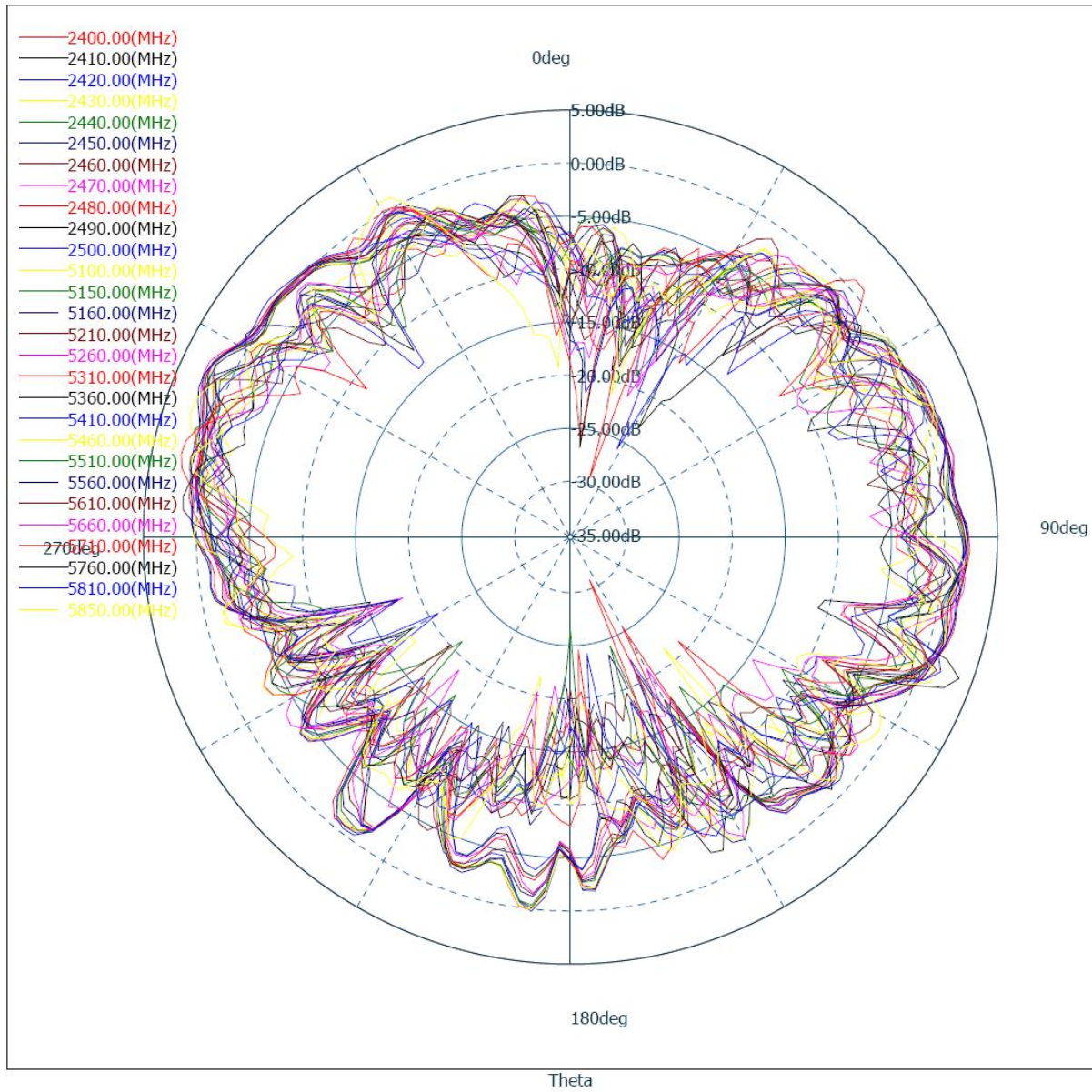


5.3.2 E-plane

E1



E2



5.4 UGain & Efficiency

Frequency [Hz]	Efficiency	Gain [dBi]
----------------	------------	------------

2.4E+09	76%	3.439045
2.41E+09	75%	3.514669
2.42E+09	76%	3.683037
2.43E+09	76%	3.638502
2.44E+09	75%	3.458362
2.45E+09	74%	3.548148
2.46E+09	75%	3.554285
2.47E+09	73%	3.511233
2.48E+09	74%	3.381227
2.49E+09	74%	3.375067
2.5E+09	72%	3.185403
5.15E+09	54%	6.839379
5.2E+09	55%	6.342397
5.25E+09	55%	5.570083
5.3E+09	56%	6.211342
5.35E+09	58%	7.168601
5.4E+09	59%	6.849573
5.45E+09	58%	6.492075
5.5E+09	57%	5.991669
5.55E+09	59%	6.194549
5.6E+09	57%	6.207276
5.6E+09	57%	6.202016
5.65E+09	57%	5.834116
5.7E+09	57%	5.15506
5.75E+09	53%	5.462827
5.8E+09	51%	5.334405
5.85E+09	50%	4.878028

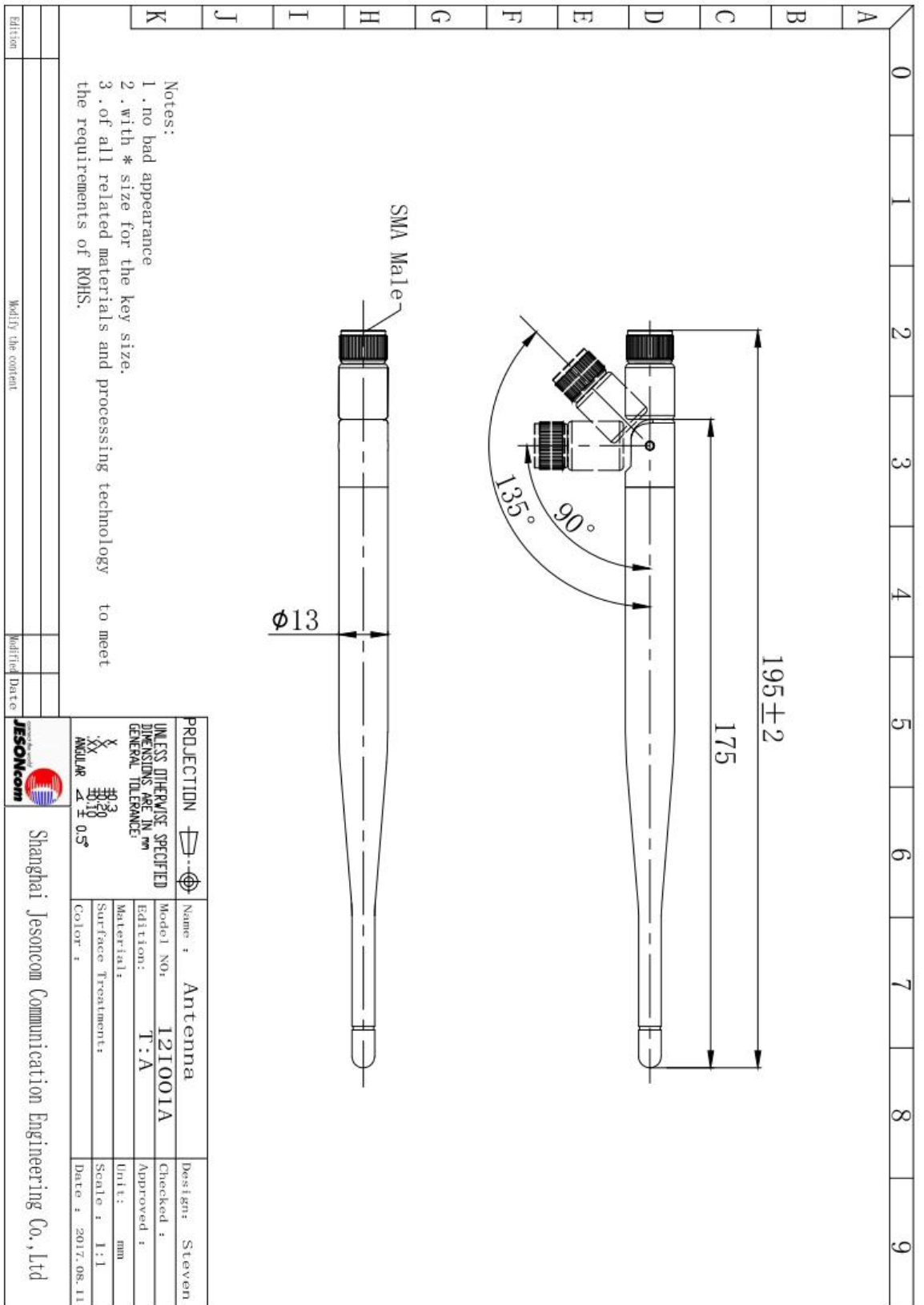
6 Environmental treatment suggestions

Environment does not need treatment

7 Impedance matching

The matching circuit has not been changed

8 Antenna plan



9 Antenna installation guide

9.1 Antenna installation instructions



10 Other