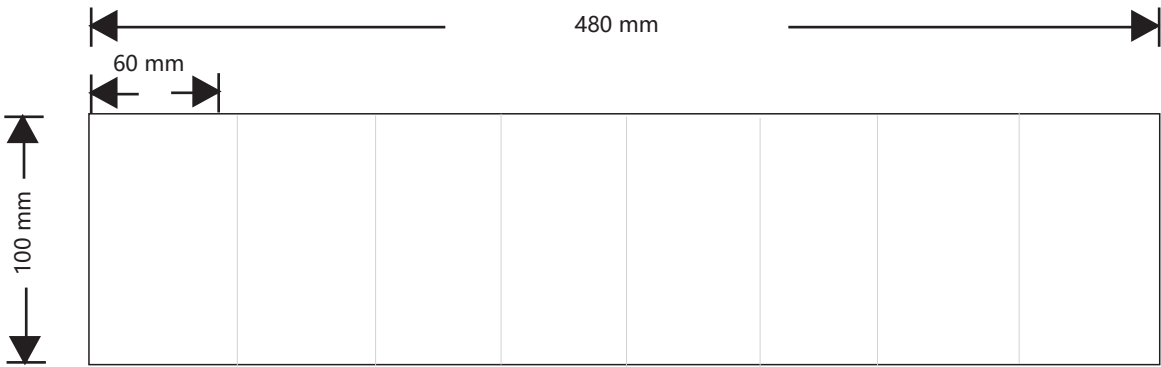


| REV. | Description |            | REV. | Description |  |
|------|-------------|------------|------|-------------|--|
| 00   | 首次发行        |            |      |             |  |
|      | 余雅萍         | 2024/04/11 |      |             |  |
|      |             |            |      |             |  |
|      |             |            |      |             |  |
|      |             |            |      |             |  |
|      |             |            |      |             |  |
|      |             |            |      |             |  |
|      |             |            |      |             |  |
|      |             |            |      |             |  |
|      |             |            |      |             |  |
|      |             |            |      |             |  |
|      |             |            |      |             |  |

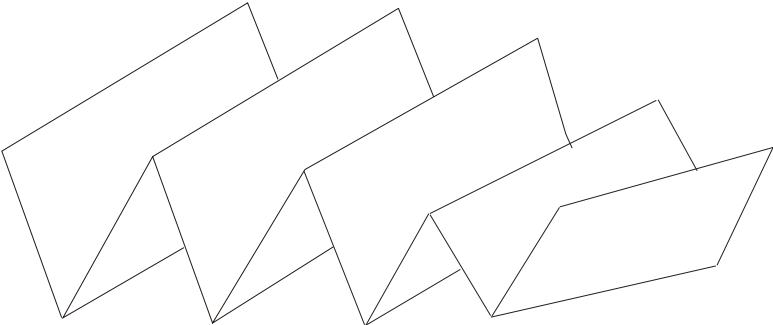
|    |  |    |  |   |  |
|----|--|----|--|---|--|
| 描述 | 快速安装指南 Pocket WiFi+LAN V2.0 英文版 SolaX 00 版 |    |  |  | 浙江艾罗网络能源技术有限公司<br>SolaX Power Network Technology<br>(Zhejiang) Co., Ltd. |
| 料号 | 320102122100                               |    |  |   |  |
| 单位 | mm   | 页次 |  |   |  |



**技术要求:**  
技术要求:  
1. 材质为 80g 铜版纸, 所有页黑白打印, 正反打印  
2. 如图示折叠出货, 要求折叠对齐, 折痕平滑  
3. 未注尺寸公差按 +/- 3mm  
4. 图面、字体印刷清晰、无毛边、不起边、油墨不脱落  
5. 字体颜色为 PANTONE BLACK, 无边框, 底色为白色  
6. 符合 RoHS 要求



正反打印  
正面打印 封面 - 7 页  
反面打印 8 - 封底  
7 页背面为 8 页



如图折页出货

|    |  |    |  |                |                |
|----|--|----|--|----------------|----------------|
| 描述 | 快速安装指南 Pocket WiFi+LAN V2.0 英文版 SolaX 00 版 |    |  | 设计             | 余雅萍 2024/04/11 |
|    |  |    |  | 审核             | 随晓宇 2024/04/11 |
| 材料 | 铜版纸  |    |  | 核准             | 施鑫淼 2024/04/11 |
| 料号 | 320102122100                               |    |  | 浙江艾罗网络能源技术有限公司 |                |
| 单位 | mm   | 页次 |  |                |                |



# **Pocket WiFi + LAN V2.0**

## **Installation Manual**

Version 0.0

[www.solaxpower.com](http://www.solaxpower.com)



Manual and configuration  
codes in the QR code or at  
<http://bit.ly/solaxpower.com/>

## Safety

### Descriptions of Labels



CE mark of  
conformity



FCC mark of conformity



RCM mark of  
conformity



Do not dispose of the  
device together with  
household waste.

### CE DECLARATION OF CONFORMITY

- The product conforms to RF specifications and technical standards.
- The device complies with DOC declaration.
- The device meets the basic requirements and other relevant provisions of 2014/53/EU directive.
- The device is allowed to be used in all EU member states.
- Manufacturer: SolaX Power Network Technology (Zhejiang) Co., Ltd.  
Product type: Pocket WiFi  
[CE DECLARATION OF CONFORMITY]: <https://www.solaxpower.com/uploads/file/pocket-wifi-ce-declaration-of-conformity-en.pdf>

### FCC RULES

This device complies with part 15 of the FCC Rules. Operation is subject to the following two conditions:  
(1) This device may not cause harmful interference, and  
(2) This device must accept any interference received, including interference that may cause undesired operation.  
Any changes or modifications not expressly approved by the party responsible for compliance could void the user's authority to operate the equipment.

## FCC RULES

This equipment complies with FCC radiation exposure limits set forth for an uncontrolled environment. This equipment should be installed and operated with minimum distance 20cm between the radiator & your body

Note: This equipment has been tested and found to comply with the limits for a Class B digital device, pursuant to part 15 of the FCC Rules. These limits are designed to provide reasonable protection against harmful interference in a residential installation. This equipment generates, uses and can radiate radio frequency energy and, if not installed and used in accordance with the instructions, may cause harmful interference to radio communications. However, there is no guarantee that interference will not occur in a particular installation. If this equipment does cause harmful interference to radio or television reception, which can be determined by turning the equipment off and on, the user is encouraged to try to correct the interference by one or more of the following measures:

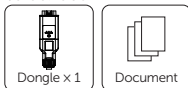
- Reorient or relocate the receiving antenna.
- Increase the separation between the equipment and receiver.
- Connect the equipment into an outlet on a circuit different from that to which the receiver is connected.
- Consult the dealer or an experienced radio/TV technician for help.

Please scan the QR code below for safety regulations in multiple languages:



## Packing List

General version:



North American and Japanese version:

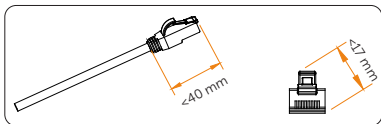


## Installation

### Additional required materials

| Version                             | Material                               | Mode | Requirements  |
|-------------------------------------|--|------|---|
| General version                     | Communication cable with RJ45 terminal | LAN  | RJ45 terminal is installed on the communication cable and has been crimped.<br>*The length of RJ45 terminal shall <40 mm and the width across corners shall <17 mm (as shown in the following diagram). |
| North American and Japanese version | Corrugated pipe                        | LAN  | Outer diameter: 13mm;<br>Inner diameter: 10mm   |
| North American and Japanese version | Communication cable                    | LAN  | CAT5E   |

| Version                             | Material      | Mode | Requirements |
|-------------------------------------|---------------|------|--------------|
| North American and Japanese version | RJ45 terminal | LAN  | Standard     |



#### Installation tools



#### Installation steps

#### WARNING!

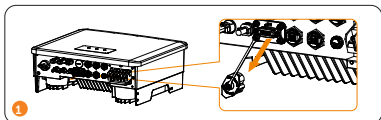
- Ensure that all power has been turned off at least 5 minutes prior to installation.

This product is equipped with two kinds of communication modes (Wi-Fi or LAN). Users can choose based on actual needs.

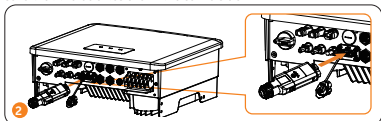
- **Wi-Fi Mode**

Installation steps

Step 1: Remove the dust-proof cap on the inverter.



Step 2: Plug in the dongle to the correct port of the inverter. Make sure that the buckles are in the same side.

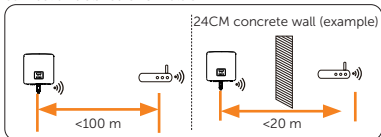


**NOTICE!**

- Buckles should be on the same side.

**Installation requirements**

For Wi-Fi mode, the longest connection distance between the router and the equipment should be no more than 100 meters; if there is a wall between the router and the equipment, the longest connection distance is 20 meters.

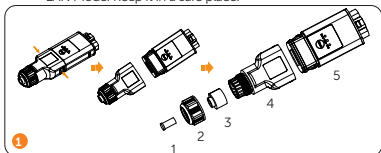


## NOTICE!

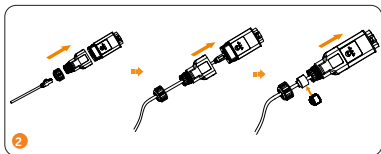
- When the Wi-Fi signal is weak, please install a Wi-Fi signal booster at the appropriate location.

### • LAN mode (general version)

Step 1: Press the buckles on the side of dongle to separate the dongle main body. Then, disassemble the dongle into components 1, 2, 3, 4 and 5; Component 1 is not used for LAN Mode. Keep it in a safe place.



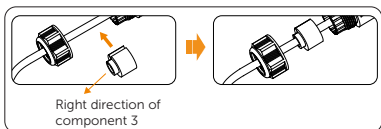
Step 2: Insert the communication cable into component 2, 4 and 5 in sequence. Install the RJ45 terminal with component 5. Mount the component 3 to the communication cable between component 2 and 4.



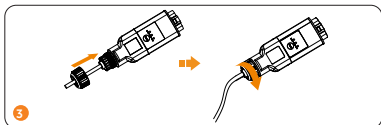
## NOTICE!

- Please mount the component 3 to the communication cable in the right direct (as shown below).

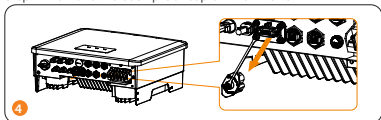




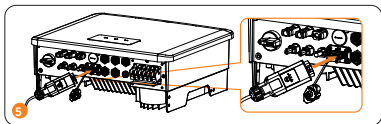
Step 3: Clockwise tighten all the components in sequence to complete the LAN assembly.



Step 4: Remove the dust-proof cap on the inverter.

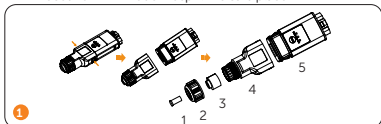


Step 5: Plug in the dongle to the correct port of the inverter. Make sure that the buckles are in the same side.

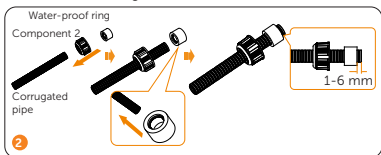


- LAN mode (North American and Japanese version)

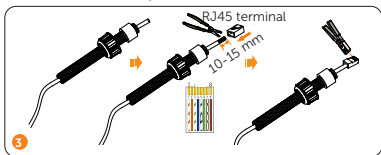
Step 1: Press the buckles on the side of dongle to separate the dongle main body. Then, disassemble the dongle into components 1, 2, 3, 4 and 5; Component 1 and 3 is not used for LAN Mode. Keep it in a safe place.



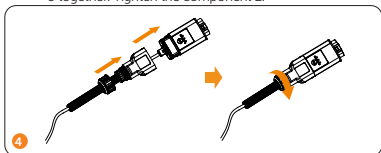
Step 2: Insert the component 2 and water-proof ring into the corrugated pipe in sequence. Reserve 1-6 mm length over the corrugate pipe to ensure the leakproofness. And the water-proof ring shall be installed in the right direct (as shown in the figure below).



Step 3: Thread the communication cable into the corrugated pipe. Strip the communication cable, install the RJ45 terminal and crimp the terminal.



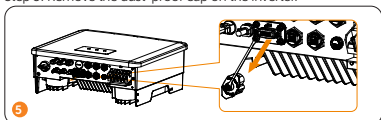
Step 4: Insert the RJ45 terminal into the corresponding port of component 5. Thread the corrugated pipe and water-proof ring into the component 4. Joint component 4 and 5 together. Tighten the component 2.



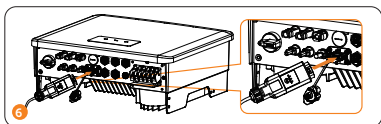
#### NOTICE!

- Please ensure that the water-proof ring is installed firmly.

Step 5: Remove the dust-proof cap on the inverter.



Step 6: Plug in the dongle to the correct port of the inverter. Make sure that the buckles are in the same side.



## Wi-Fi Configuration

Scan the following QR code or search for the keyword "SolaxCloud" in the APP Store to download the Monitoring APP. Scan the following QR code to read **Configuration Guide** online.



DOWNLOAD APP



CONFIGURATION GUIDE

### NOTICE!

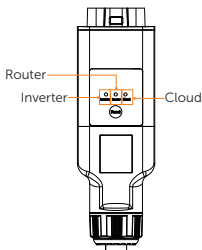
- If you need to download **Configuration Guide**, please scroll down to the bottom of the interface and click [Download].

### Technical data

|                         |                                   |
|-------------------------|-----------------------------------|
| Model                   | Pocket WiFi+LAN V2.0              |
| Power Supply            | 5 V 200 mA DC                     |
| Rated Power             | 1 W                               |
| Data Transfer Intervals | 5 min                             |
| EIRP Power              | 18.23 dBm (Measured Max. Average) |
| Antenna Gain            | 0.86 dBi                          |
| Wi-Fi standard          | 802.11 b/g/n                      |
| Wi-Fi Band              | 2.412-2.462 GHz                   |

|                             |  |
|-----------------------------|--|
| Model                       | Pocket WiFi+LAN V2.0   |
| LAN Bandwidth               | 10/100 M   |
| Weight                      | 80±10 g  |
| Dimension                   | 134 × 44 × 26.5 mm   |
| Degree of Protection        | IP65   |
| Operating Temperature Range | -30°C ~ +60°C  |
| Wireless Module             | WiFi 2.4 GHz   |
| Enthernet                   | 10/100 M   |
| Safety                      | EN IEC 62311: 2020<br>EN IEC 62368-1:2020+A11:2020   |
| Grid Monitoring             | ETSI EN 300 328 V2.2.2: 2019<br>ETSI EN 301 908-1 V13.1.1: 2019<br>ETSI EN 301 908-13 V13.1.1: 2019<br>FCC-ID<br>FCC CFR Title 47, Part 15, SubpartC ANSI C63.4-2014 |

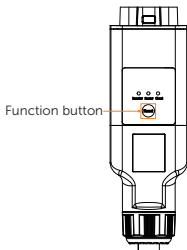
## Indicator description



| Indicator | Status   | Description                                  |
|-----------|--|--|
| Inverter  | Red light flashes<br>(on for 0.2s, off for 0.2s) | Connecting to<br>the inverter                |
|           | Red light steady<br>on                           | Abnormal<br>connection to<br>the inverter    |
|           | Off  | Connected to<br>the inverter<br>successfully |

| Indicator | Status   | Description                          |
|-----------|--|--------------------------------------|
| Router    | Red light flashes<br>(on for 0.2s, off for 0.2s)   | Connecting to the router             |
|           | Red light steady on                                | Abnormal connection to the router    |
|           | Off  | Connected to the router successfully |
| Cloud     | Red light flashes<br>(on for 0.2s, off for 0.2s)   | Connecting to the server             |
|           | Red light steady on                                | Abnormal connection to the server    |
|           | Green light steady on                              | Connected to the server successfully |
|           | Green light flashes<br>(on for 0.2s, off for 0.2s) | OTA upgrading                        |

## Function button description



| Function           | Operation                   |
|--------------------|-----------------------------|
| Turn on AP         | Press once                  |
| Reset              | Press twice                 |
| Factory data reset | Long press for more than 5s |



**SolaX Power Network Technology (Zhejiang) Co., Ltd.**

ADD.: No. 278, Shizhu Road, Chengnan Sub-district, Tonglu County,  
Hangzhou, Zhejiang, China  
E-mail: [info@solaxpower.com](mailto:info@solaxpower.com)  
[www.solaxpower.com](http://www.solaxpower.com)

Copyright © SolaX Power Network Technology (Zhejiang) Co., Ltd. All rights reserved



320102122100