

User manual

WhisperTech connect
BD-1720-TWUS

Setup (*Android*)

Note

The Bond Home application requires the Android device to be on version 6 or greater.

1. Make sure that you have a stable and working wireless network.
2. Plug the Bond into an outlet.
3. The Bond center ring light will be white while the Bond is in boot up mode.
4. The Bond center ring light will be flashing green when the Bond is ready to be used. If the Bond light ring is not flashing green, try performing a WiFi (Green) reset.
5. Download the Bond application at
6. Open the Bond Home application.
7. If you already have a Bond account, simply log in and continue to the next step. If you do not have a Bond account, press Create Account and enter your name, email, and a password and click Create Account.
8. Once logged in, click the + sign at the bottom (middle) part of your application screen and choose Bond Bridge.
9. Once you are on the setup screen, select Continue.
10. Select your Bond Config WiFi (Bond serial number) shown under nearby devices. If you are unable to connect to the Bond Config WiFi, please follow the procedure in <https://olibra.zendesk.com/hc/en-us/articles/360000320952-bond-bridge-Can-t-Connect-to-BOND-WiFi-Web-user-Interface?product=bond-bridge> to manually connect the Bond to your account.
11. Select the network you wish to connect to and enter the network password. If you do not see your network, refresh the list by pulling the list down and releasing it.
 1. If connecting to a **Hidden** network.
 1. With Bond Bridges having serial numbers starting with **A** or **B**
 1. Select **OTHER** in the WiFi network List
 2. Enter the name of the WiFi network
 3. The MAC address of the router or access point
 4. The password
 2. With Bond Bridges having serial numbers starting with **Z**
 1. Select **OTHER** in the WiFi network List
 2. Enter the name of the WiFi network
 3. The password
12. Once connected to your network, the Bond center ring light will turn blue.

Setup (*Android*)

*** Important note ***

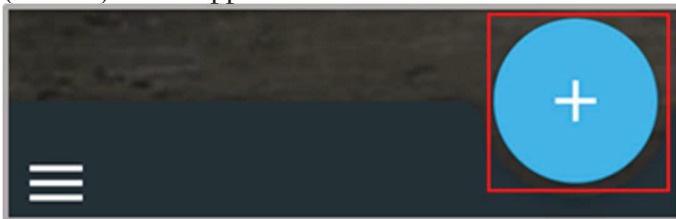
If the Bond is unable to connect to your WiFi network, the Bond center ring light will turn orange. Please try the following:

1. Make sure you are correctly entering your password.
2. Try a WiFi reset and try the setup process again.
3. Try resetting your WiFi router.
4. Unplug your Bond, wait 30 seconds, and plug it back in.
5. If you are still having issues connecting to WiFi, please contact us at customerservice@bondhome.io.

back to top

Adding a new device (Android)

1. From the Device screen on the bond home application, click the + sign at the bottom (middle) of the application.

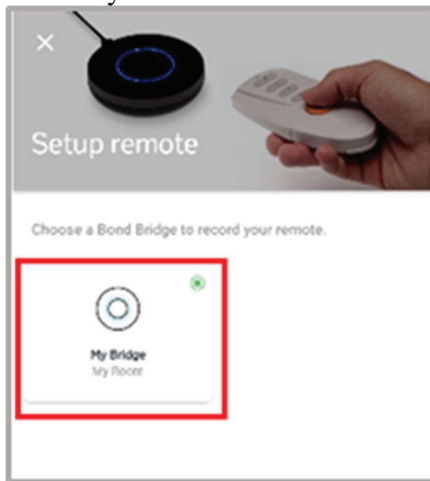


2. Choose Remote Control.



Setup (*Android*)

3. Choose your Bond.

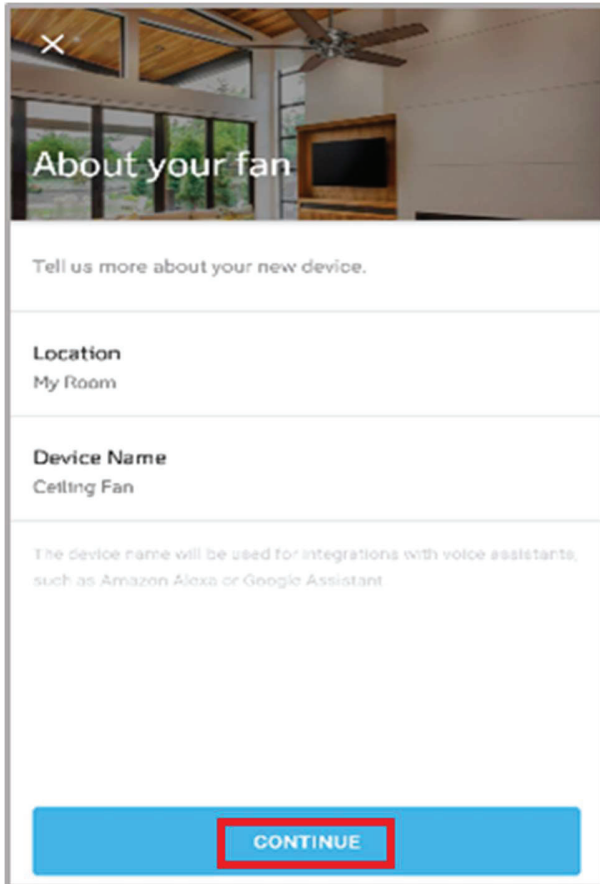


4. Select Ceiling Fan

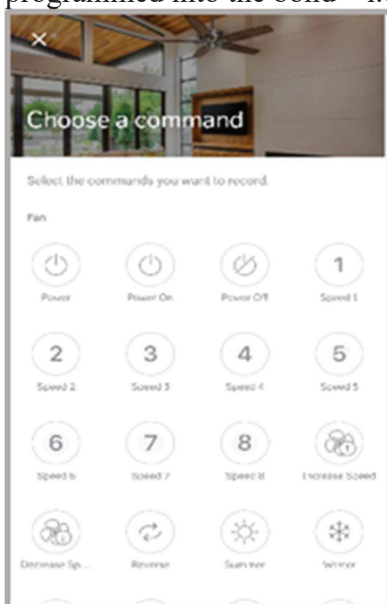


Setup (*Android*)

5. Set Device Name & location.



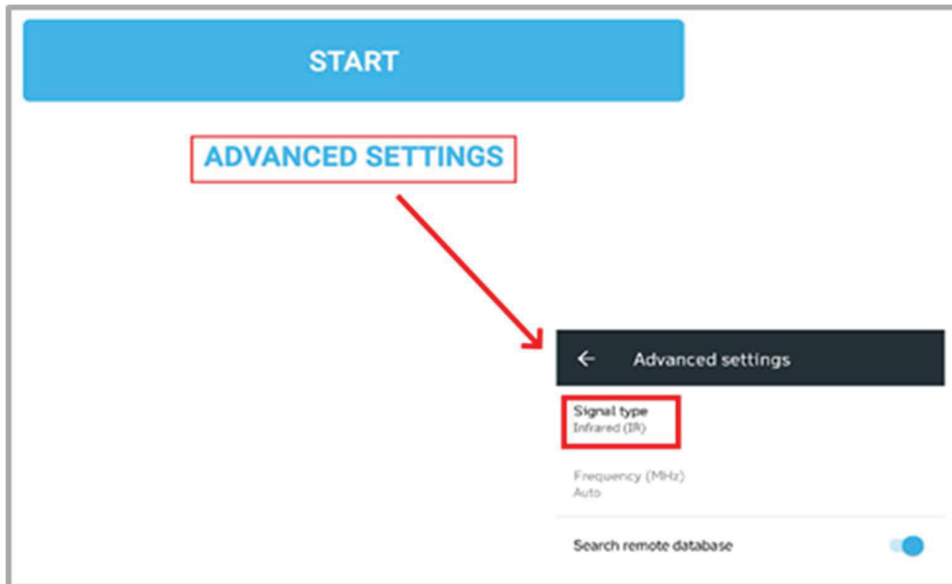
6. Select **Continue**.
7. Choose the function/button that best represents the function of your remote to be programmed into the bond – i.e. Power On/Off, Speed, Light, etc.



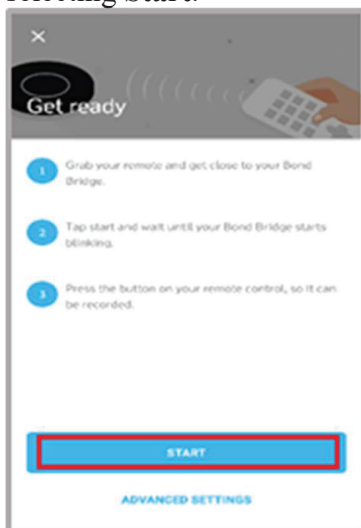
Setup (*Android*)

*** Important Note***

If your remote is an IR remote, please select “Advanced Settings”, change Signal Type to IR and click **Save**.



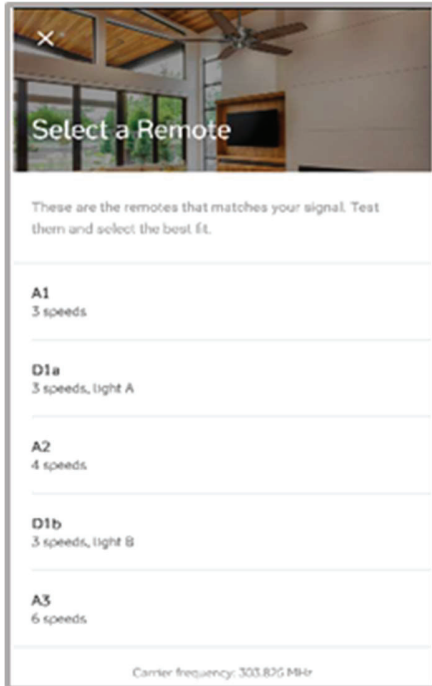
8. Begin the scanning process on the application by following the on-screen instructions and selecting **Start**.



9. Aim your remote at the Bond and press the button repeatedly until the Bond center ring light turns green. Please have the remote about 2 feet away from the Bond.

Setup (*Android*)

10. Once the Bond center ring lights turn blue, you will be asked to choose your remote from a list of remotes that matched the signal. Test them and select the best fit.



11. Select "Use this remote".
12. Select **Done**.

Setup (*iOS*)

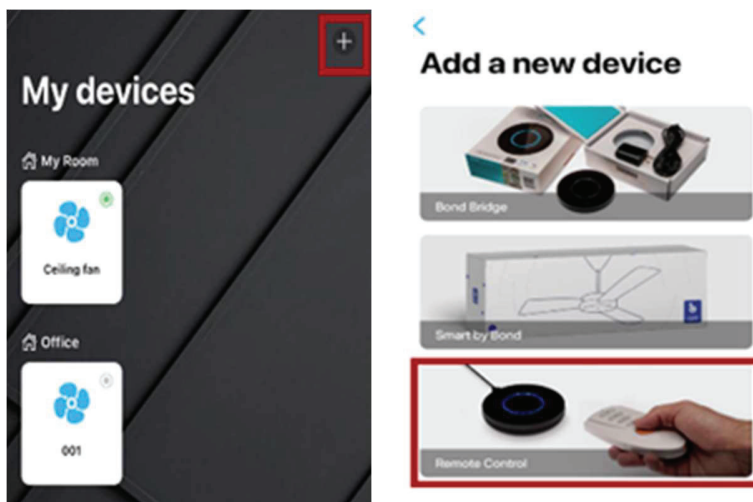
*** Important note ***

If the bond is unable to connect to your WiFi network, the Bond center ring light will turn orange. Please try the following:

1. Make sure you are correctly entering your password.
2. Try a WiFi reset and try the setup process again.
3. Try resetting your WiFi router.
4. Unplug your Bond, wait 30 seconds, and plug it back in.
5. If you are still having issues connecting to WiFi, please contact us at customerservice@bondhome.io.

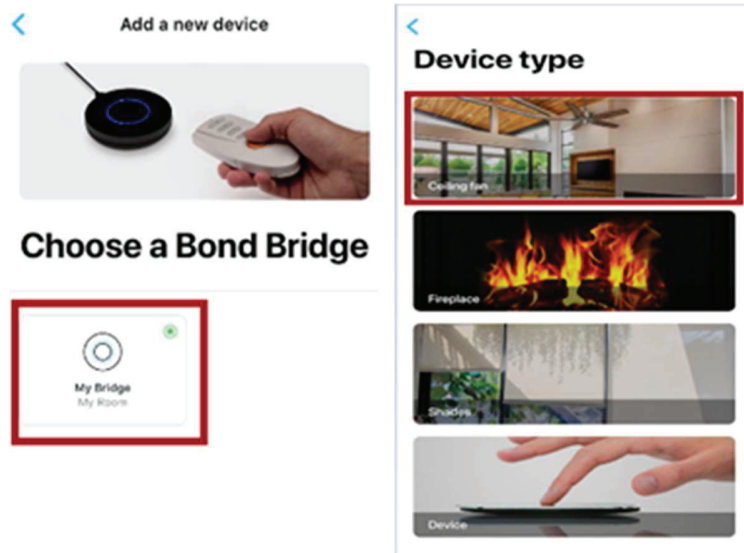
Adding a New device (*iOS*)

1. From the “My Devices” screen on the bond home app., click the + sign on the upper right corner of the screen and choose Remote Control.

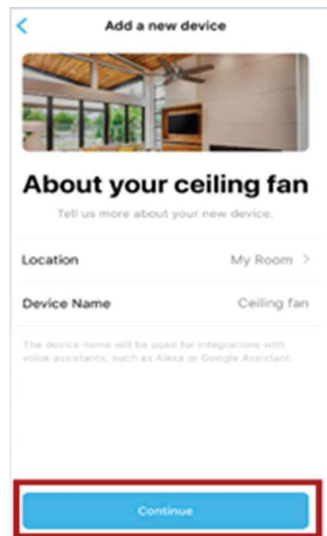


Setup (*iOS*)

2. Choose your bond under and select a device type.

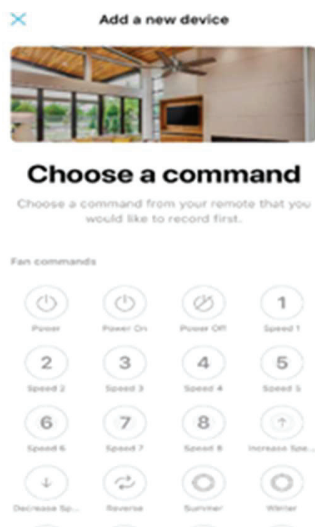


3. Once you are on the “About your fan” screen, where you can set the device name & location, then select **Continue**.



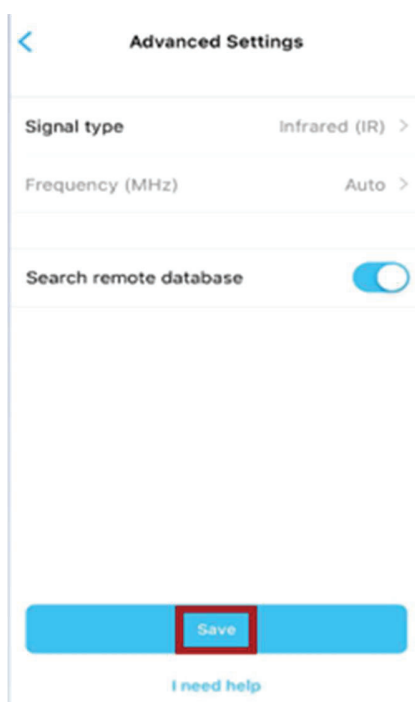
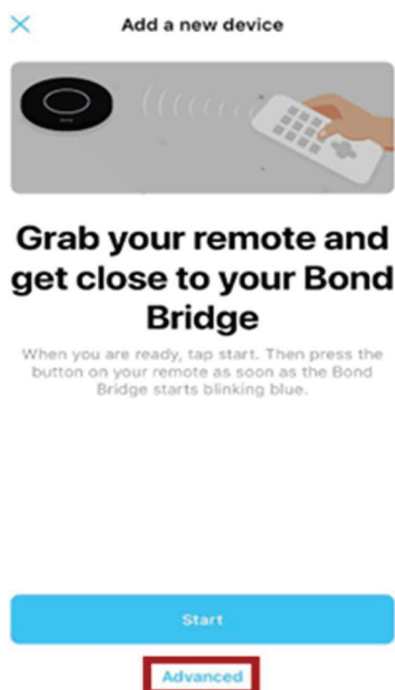
4. Choose the function/button that best represents the function of your remote to be programmed into the bond – i.e. Power On/Off, Speed, Light, etc.

Setup (iOS)



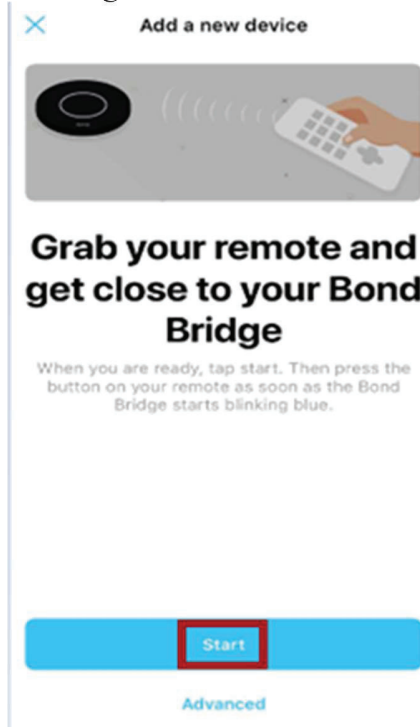
*** Important Note***

If your remote is an IR remote, please select “Advanced”, change Signal Type to IR and click Save.

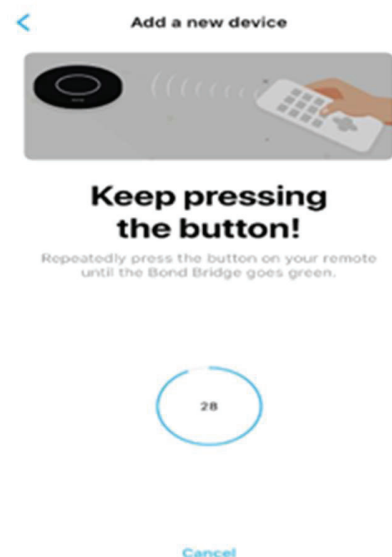


Setup (iOS)

5. Begin the scanning process on the application by following the on-screen instructions and selecting Start.



6. Aim your remote at the Bond and press the button repeatedly until the bond center ring light turns green. Please have the remote about 2 feet away from the Bond.



7. Once the Bond center ring lights turn blue, you will be asked to choose your remote from a list of remotes that matched the signal. Test them and select the best fit.
8. Select "Use this remote".
9. Select Done.

***** Important note *****

If you were unable to program your remote please try the following:

1. Try changing the remote batteries.
2. Instead of pressing and holding the function, try pressing the function repeatedly.
3. Get closer (1 foot) or further away (4 feet) from the Bond and try again.
4. Try pointing the remote directly at the Bond front or sides when recording.
 1. The front part of the Bond unit is opposite the USB port.
5. Go back to step 4 for choosing a command and try recording a different function.
6. If unsuccessful, power cycle the Bond by unplugging it, and plugging it back in after 30 seconds.
7. If you are still unable to program your remote, please contact us at customerservice@bondhome.io.

The BOND only can learn the control signals from remotewhich the frequency range are 285.5MHz-321.5MHz,336.0MHz-364.99MHz,365MHz-399.5MHz, 410.5MHz-505.5MHz and the maximum duty cycle is 20%, maximum deactivation time is 2S.

FCC Statement:

Any Changes or modifications not expressly approved by the party responsible for compliance could void the user's authority to operate the equipment.

This device complies with part 15 of the FCC Rules. Operation is subject to the following two conditions:

- (1) This device may not cause harmful interference, and
- (2) This device must accept any interference received, including interference that may cause undesired operation.

FCC Radiation Exposure Statement:

This equipment complies with FCC radiation exposure limits set forth for an uncontrolled environment. This equipment should be installed and operated with minimum distance 20cm between the radiator & your body.

Note : This equipment has been tested and found to comply with the limits for a Class B digital device, pursuant to part 15 of the FCC Rules. These limits are designed to provide reasonable protection against harmful interference in a residential installation. This equipment generates, uses and can radiate radio frequency energy and, if not installed and used in accordance with the instructions, may cause harmful interference to radio communications. However, there is no guarantee that interference will not occur in a particular installation. If this equipment does cause harmful interference to radio or television reception, which can be determined by turning the equipment off and on, the user is encouraged to try to correct the interference by one or more of the following measures:

- Reorient or relocate the receiving antenna.
- Increase the separation between the equipment and receiver.
- Connect the equipment into an outlet on a circuit different from that to which the receiver is connected.
- Consult the dealer or an experienced radio/TV technician for help.

ISED RSS Warning/ISED RF Exposure Statement**ISED RSS Warning:**

This device complies with Innovation, Science and Economic Development Canada licence-exempt RSS standard(s). Operation is subject to the following two conditions: (1) this device may not cause interference, and (2) this device must accept any interference, including interference that may cause undesired operation of the device.

Le présent appareil est conforme aux CNR d'ISED applicables aux appareils radio exempts de licence. L'exploitation est autorisée aux deux conditions suivantes:

- (1) l'appareil ne doit pas produire de brouillage, et
- (2) l'utilisateur de l'appareil doit accepter tout brouillage radioélectrique subi, même si le brouillage est susceptible d'en compromettre le fonctionnement.

ISED RF exposure statement:

This equipment complies with ISED radiation exposure limits set forth for an uncontrolled environment. This equipment should be installed and operated with minimum distance 20cm between the radiator & your body. This transmitter must not be co-located or operating in conjunction with any other antenna or transmitter.

Le rayonnement de la classe B respecte ISED fixaient un environnement non contrôlés. Installation et mise en œuvre de ce matériel devrait avec échangeur distance minimale entre 20 cm ton corps. Lanceurs ou ne peuvent pas coexister cette antenne ou capteurs avec d'autres.