

## PAIRING AND POWERING OFF EARBUDDS

### NOTES FOR PAIRING

- KEEP THE DISTANCE BETWEEN YOUR SMARTPHONE AND THE EARBUDDS WITHIN 3 FEET (FOR PAIRING ONLY).
- THE EARBUDDS MUST BE POWERED ON IN ORDER TO PAIR.
- BEFORE ATTEMPTING TO PAIR, MAKE SURE THAT YOUR SMARTPHONE OR TABLET'S BLUETOOTH FUNCTION IS ENABLED UNDER SETTINGS.
- SPECIFIC CHARGING PROCEDURES WILL BE DIFFERENT DEPENDING ON DIFFERENT BRANDS AND MODELS. FOR DETAILED INFORMATION ON PAIRING, PLEASE REFER TO YOUR DEVICE'S USER MANUAL.

**STEP 1:** PRESS AND HOLD THE MULTIFUNCTION BUTTONS ON EACH EARBUDD FOR 3 SECONDS. YOU WILL SEE THE LED FLASH RED AND BLUE ON EACH SIDE, INDICATING THAT THE POWER IS ON. YOUR EARBUDDS ARE NOW IN PAIRING MODE.

**STEP 2:** OPEN YOUR SMART DEVICE'S SETTINGS MENU AND ACTIVATE BLUETOOTH PAIRING. YOUR SMART DEVICE (SMARTPHONE ETC.) WILL PERFORM A SEARCH FOR LOCAL DEVICES. AFTER A FEW SECONDS YOU'LL SEE EARBUDDS APPEAR ON THE LIST.

**STEP 3:** SELECT THIS OPTION. ONCE THIS HAPPENS, YOUR EARBUDDS ARE READY TO USE!

\*YOU MAY WISH TO ONLY USE ONE EARBUDD (SINGLE MODE) INSTEAD OF USING THE PAIR TOGETHER (DUAL MODE) WHEN THIS IS THE CASE. SIMPLY TURN ON THE EARBUDD YOU WISH TO USE AND FOLLOW THE SAME STEP WHILE KEEPING THE OTHER EARBUDD TURNED OFF. YOU WILL HAVE THE SAME GENERAL FUNCTIONALITY.

### AUTO-PAIRING

ONCE YOU HAVE SUCCESSFULLY PAIRED YOUR EARBUDDS TO A BLUETOOTH-ENABLED DEVICE, THAT DEVICE WILL REMEMBER AND RECOGNIZE YOUR EARBUDDS FOR AUTOMATIC PAIRING. THIS MEANS THAT THE NEXT TIME YOU WISH TO USE YOUR EARBUDDS WITH THAT SMART DEVICE, PAIRING WILL HAPPEN AUTOMATICALLY AND WITHOUT THE NEED FOR YOU TO REPEAT YOUR DEVICE'S BLUETOOTH SETUP PROCESS.

### POWERING OFF EARBUDDS

**POWER OFF EACH INDIVIDUAL EARBUDD:**  
PRESS AND HOLD THE MULTIFUNCTION BUTTON ON EITHER EARBUDD FOR 6 SECONDS. BOTH EARBUDDS WILL POWER OFF.

**POWER OFF BOTH EARBUDDS BY CHARGE CASE:**  
DOCK BOTH EARBUDDS INSIDE THE CHARGING CASE. NOW PRESS THE CHARGING CASE'S POWER BUTTON ONCE TO POWER OFF AND CHARGE BOTH EARBUDDS.

### READING THE LED INDICATOR

UNIT	LED INDICATION	MEANING
TW2	LED FLASHES RED AND BLUE REPEATING EVERY 3 SECONDS.	THE EARBUDD MUST BE POWERED ON IN ORDER TO BE PAIRED WITH YOUR DEVICE.
	LED FLASHES RED AND BLUE ALTERNATINGLY FOR 10 SECONDS.	THE EARBUDD IS PAIRING WITH YOUR DEVICE.
	LED FLASHES RED ONLY.	THE EARBUDD HAS LOW BATTERY AND SHOULD BE RECHARGED.
	LED FLASHES BLUE ONLY.	THE EARBUDD HAS LOW POWER AND SHOULD BE RECHARGED.
CHARGING CASE	LED DOES NOT FLASH ANY COLOR/LIGHT	THE EARBUDDS AND CASE ARE FULLY CHARGED.
	LED FLASHES RED AND BLUE ALTERNATINGLY FOR 3 SECONDS AND THEN REPEATS.	THE UNIT IS OPERATING WITH LOW BATTERY LIFE.
CHARGING CASE	BOTH BLUE LEDS ARE FLASHING	THE UNIT IS OPERATING WITH 100% BATTERY LIFE.

### FUNCTIONS & ACTIONS

FUNCTION	ACTION
CALLS	ANSWER/END CALL BY PRESSING ONCE THE MULTIFUNCTION BUTTON ON EITHER EARBUDD.
ANSWER CALL (DUAL MODE)	ANSWER CALL BY PRESSING ONCE THE MULTIFUNCTION BUTTON ON EITHER EARBUDD.
ANSWER CALL (SINGLE MODE)	ANSWER CALL BY PRESSING ONCE THE MULTIFUNCTION BUTTON ON EITHER EARBUDD.
END CALL (DUAL MODE)	END CALL BY PRESSING ONCE THE MULTIFUNCTION BUTTON ON EITHER EARBUDD.
END CALL (SINGLE MODE)	END CALL BY PRESSING ONCE THE MULTIFUNCTION BUTTON ON EITHER EARBUDD.
PLAY OR PAUSE	PLAY OR PAUSE BY PRESSING ONCE THE MULTIFUNCTION BUTTON ON EITHER EARBUDD.
VOLUME & PLAYLIST CONTROLS	FOR MORE INFORMATION GO TO A SMARTPHONE OR TABLET'S SCREEN.



### SAFETY PRECAUTIONS/WARNINGS

IF YOU HAVEN'T USED YOUR EARBUDDS IN A WHILE OR PLAN TO GO LONG PERIODS OF TIME WITHOUT USING THEM, BE SURE TO CHARGE THE UNIT ONCE A MONTH TO PREVENT DAMAGE TO THE LITHIUM ION BATTERIES OVER TIME. DO NOT ATTEMPT TO PIERCE, STRIKE, OR APPLY STRONG PRESSURE WITH SHARP OR HEAVY OBJECTS. STRONG IMPACT OR SHOCKS COULD CAUSE IRREVERSIBLE DAMAGE TO THE UNIT.

AVOID PROXIMITY TO HIGH FREQUENCIES AND STRONG MAGNETIC DEVICES WHEN POSSIBLE. DROPPING OR MISHANDLING THE EARBUDDS MAY CAUSE IRREPARABLE DAMAGE TO THE UNIT AND ITS BATTERIES. DO NOT EXPOSE TO OR SUBMERGE IN WATER.

KEEP EARBUDDS AWAY FROM HEATING APPLIANCES AND SOURCES OF ELECTRICAL NOISE, SUCH AS FLUORESCENT LAMPS OR MOTORS. KEEP HANDS DRY AND CLEAN WHEN TOUCHING THE EARBUDDS AND BUTTONS.

KEEP THE EARBUDDS AWAY FROM SMALL CHILDREN AT ALL TIMES OR UNDER STRICT SUPERVISION BY AN ADULT AT ALL TIMES. THE UNIT CONTAINS SMALL PARTS AND MAY POSE A CHOKING HAZARD.

DO NOT EXPOSE THE EARBUDDS TO EXTREMELY HIGH OR EXTREMELY LOW TEMPERATURES OR HIGH PRESSURE. DO NOT EXPOSE THE EARBUDDS OR CASE TO FIRE, DIRECT SUNLIGHT, DUST,

HIGH LEVELS OF HUMIDITY, OR OTHER HOT LOCATIONS. THIS MAY CAUSE THE BATTERY TO GENERATE HEAT, SMOKE, OR EXPLODE. USING THE EARBUDDS OR CHARGING CASE IN THIS MANNER MAY ALSO RESULT IN A LOSS OF PERFORMANCE IN A SHORTENED LIFE EXPECTANCY.

DO NOT ATTEMPT TO DISASSEMBLE OR MODIFY THE EARBUDDS OR CASE IN ANY WAY.

IMMEDIATELY DISCONTINUE USE IF THE UNIT HAS ANY VISIBLY EXPOSED PARTS OR APPEARS MALFUNCTIONAL IN ANY WAY.

IF THIS DOES OCCUR, ISOLATE THE EARBUDDS IN A SAFE PLACE AND CONTACT THE GEN TEK CUSTOMER SUPPORT TEAM AT HELLO@HIFIND.COM.



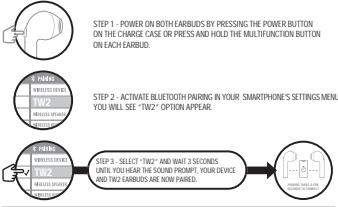
© 2018 GEN INDUSTRIES INC. ALL RIGHTS RESERVED. GEN TEK IS A REGISTERED TRADEMARK OF GEN INDUSTRIES INC. OTHER TRADEMARKS AND TRADE NAMES ARE THOSE OF THEIR RESPECTIVE OWNERS. MANUFACTURED AND ASSEMBLED BY GEN INDUSTRIES INC., 100 WEST 34TH STREET, 7TH FLOOR, NEW YORK, NY 10001. BY DESIGN FOR PATIENTS' GENENTEC COMPARTMENTS' COUPLERS AND COUPLERS MAY VARY FROM ILLUSTRATED. THE BLUETOOTH WORD MARK AND LOGOS ARE OWNED BY THE BLUETOOTH SIG, INC.™. YOUR DEVICE IS A GEN TEK™. MADE IN CHINA.



EP-015

Includes: 1x Pair-TW2 + 1x Portable Charging Case + 1x Micro-USB Charging Cable

## QUICKSTART GUIDE: MEET YOUR TW2 - WIRELESS EARBUDDS



TO ONLY USE ONE EARBUDD IN SINGLE MODE, ONLY TURN ON ONE OF THE EARBUDDS AND COMPLETE PROCESS.  
\*THE LAST SUCCESSFULLY PAIRED DEVICE WILL CONNECT AUTOMATICALLY DURING THE NEXT PAIRING ATTEMPT.

**MISSED A STEP? BEFORE ATTEMPTING TO REPAIR, TRY THESE ALTERNATIVE STEPS:**

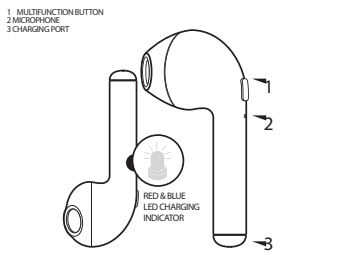
**A. POWER OFF BOTH EARBUDDS BY PRESSING AND HOLDING THE MULTIFUNCTION BUTTON FOR 6 SECONDS OF EACH EARBUDD. POWER OFF THE CHARGING CASE BY PRESSING AND HOLDING THE MULTIFUNCTION BUTTON ON THE CHARGING CASE FOR 6 SECONDS. DOUBLE PRESS ANY ONE OF THE EARBUDD'S MULTIFUNCTION BUTTONS AND THAT WILL PAIR THEM TOGETHER.**

**B. POWER ON YOUR DEVICE AND REPAIR THE CONNECTION. POWER OFF BOTH EARBUDDS BY PRESSING AND HOLDING THE MULTIFUNCTION BUTTON ON EACH EARBUDD FOR 6 SECONDS. TURN ON YOUR DEVICE AND REPAIR THE CONNECTION. POWER OFF BOTH EARBUDDS BY PRESSING AND HOLDING THE MULTIFUNCTION BUTTON ON THE CHARGING CASE FOR 6 SECONDS. DOUBLE PRESS ANY OF EARBUDD'S MULTIFUNCTION BUTTON. THIS WILL PAIR THE EARBUDDS TOGETHER.**

**C. PRESS THE POWER BUTTON ON THE CHARGING CASE. THE EARBUDDS WILL TURN ON AND PAIR TO EACH OTHER AUTOMATICALLY.**

**STILL HAVING PAIRING QUESTIONS?**  
NEED HELP? CONTACT OUR SUPPORT TEAM AT: WWW.HIFIND.COM/SUPPORT | 1-646-351-1700  
@GEN TEK | 9AM-6PM EST | HELLO@HIFIND.COM | REGISTER YOUR TRUE WIRELESS EARPHONES. WWW.GENITEK.COM

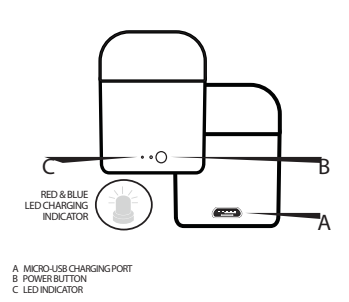
## TW2 ERGONOMIC IN-EAR DESIGN



TECHNICAL SPEC			
BLUETOOTH 5.0	PlayTime: 3 Hours (based on 100% volume)	Standby Time: Up to 100 Hours	Charge Provided (Case Power): Up to 4
Battery Type: Rechargeable Lithium-ion	Input: 5V/1A	Earbud Battery Life: 40 mins (each)	Frequency Response: 20KHz-20KHz

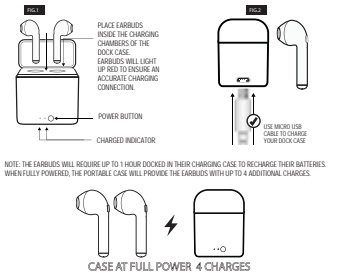
\*NOTE: USING YOUR EARBUDDS AT LOWER VOLUMES WILL HELP PROLONG THE BATTERY LIFE BETWEEN CHARGES

## 400mAh CHARGING CASE



Battery Type: Rechargeable Lithium-ion	Charge Provided (Case Power): Up to 4	Charging Case Battery Output: 5V/800mA	Impedance: 32Ω
--	---------------------------------------	--	----------------

## CHARGING YOUR EARBUDDS & CASE\*



- INSERT THE EARBUDDS INTO THEIR CORRESPONDING CHARGING PORTS IN THE CASE, RESPECTIVELY MARKED L AND R (PAGE 1).
- PRESS EACH EARBUDD FIRMLY INTO ITS SLOT UNTIL YOU FEEL A "CLICK" TO INDICATE THAT IT IS SECURE. CLOSE THE CASE.
- INSERT THE INCLUDED MICRO-USB CHARGING CABLE INTO THE BACK OF THE CHARGING CASE AND CONNECT TO A POWER SOURCE (SUCH AS A POWER BANK, AC WALL ADAPTER, ETC.) (PAGE 2).
- YOU WILL SEE THE EARBUDDS FLASH RED TO INDICATE THAT AUTOMATIC CHARGING HAS BEGUN. THE CASE'S EXTERIOR LED WILL GLOW A STEADY BLUE.
- WHEN THEY HAVE FINISHED CHARGING, ALL LEDS WILL TURN OFF TO INDICATE THAT THE EARBUDDS AND CASE ARE FULLY CHARGED.

**FCC Statement**  
Changes or modifications not expressly approved by the party responsible for compliance could void the user's authority to operate the equipment.  
This equipment has been tested and found to comply with the limits for a Class B digital device, pursuant to Part 15 of the FCC Rules. These limits are designed to provide reasonable protection against harmful interference in a residential installation. This equipment generates uses and can radiate radio frequency energy and, if not installed and used in accordance with the instructions, may cause harmful interference to radio communications. However, there is no guarantee that interference will not occur in a particular installation. If this equipment does cause harmful interference to radio or television reception, which can be determined by turning the equipment off and on, the user is encouraged to try to correct the interference by one or more of the following measures:  
- Reorient or relocate the receiving antenna.  
- Increase the separation between the equipment and receiver.  
- Connect the equipment into an outlet on a circuit different from that to which the receiver is connected.  
- Consult the dealer or an experienced radio/TV technician for help.  
This device complies with part 15 of the FCC Rules. Operation is subject to the following two conditions: (1) this device may not cause harmful interference, and (2) this device must accept any interference received, including interference that may cause undesired operation.