

產品承認書

SPECIFICATION FOR APPROVAL

CUSTOMER: **宥東科技有限公司**

Customer Part NO. :

Product Description: **CM210 Wi-Fi MIMO Antenna**

Gaobotech Part NO. : **GA16M1101XXXBA-102**

Product Weight :

客戶簽核(CSUTOMER APPROVAL)

客戶承認 Customer approval	核准 (Authorized)	檢驗 (Approved)
	Date : 2017 年 01 月 09 日	

泊科科技股份有限公司

Gaobotech Technology Co., Ltd.

台北市中山北路四段 248 號 3 樓

Production Factory :

Well Green Technology Co., Ltd. (Kunshan)/ Tel : +86-512-57464028 ; Fax: +86-512-57464118

Address: No. 132 Fong Shou Nan Road Shi Pu Town Kunshan City, Jiangsu Province, China.

King-conn (KunShan) ELECTRONICS LTD

No.206,TongZhou Road,Zhang Pu Town,Kunshan city,JiangSu

內部簽核 (Signature)	Version Date:	2017/01/09
Approved by	Checked by	Tested by
<i>Darren Chen</i>	<i>Kevin Chen</i>	<i>Johnny Hsueh</i>

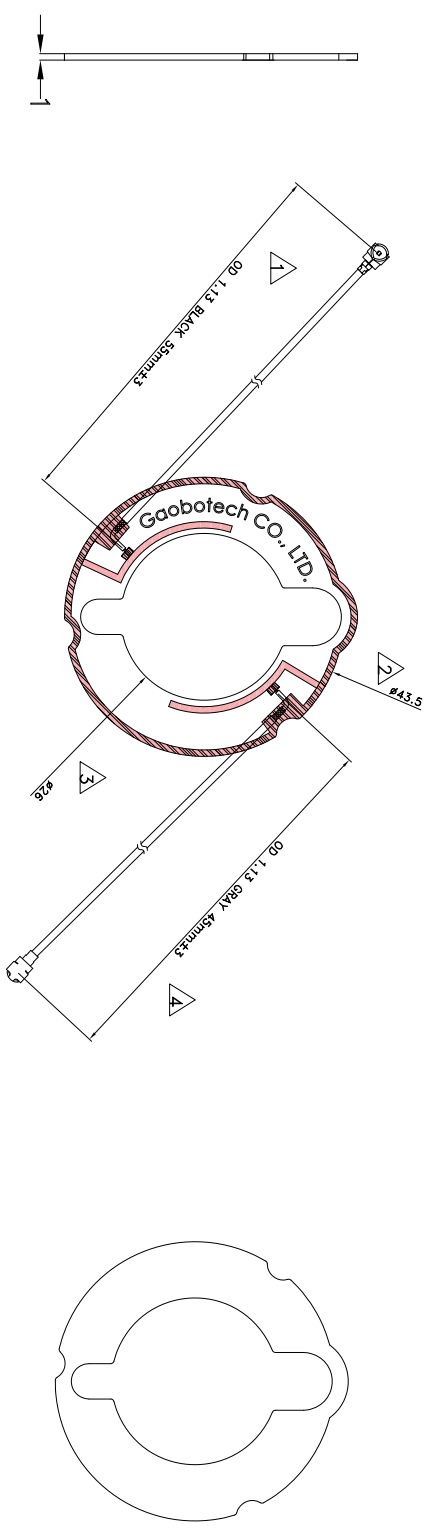
Contents

Item	Description	Page
1	Cover	1
2	Contents	2
3	產品規格描述(Specifications)	3
4	成品圖面(Drawing)	4
5	Test Report	5~17

Specification

Electrical Properties			
Frequency	2400MHz	2450MHz	2500MHz
Impedance	50Ω		
VSWR	2.0:1MAX		
Peak Gain	2dBi		
Connector	I-PEX		

REV	DRAWING	DESCRIPTION	APPROVED	DATE
A	Haok		Darren	2017/01/09



Bottom

Top

ELECTRICAL:
 Frequency: 2400MHz~2500MHz
 Impedance: 50Ω
 Peak Gain: 2.0dBi
 Return Loss: ≤ -10dB

MECHANICAL:
 Material: FR-4(White) T=1mm
 Cable: D1.13 GRAY 45mm&D1.13 BLACK 55mm
 Connector: I-PEX

NOTE:
 1. ∇ ~ ∇ 為重點量測尺寸
 2. MHF方向請按照圖面所示

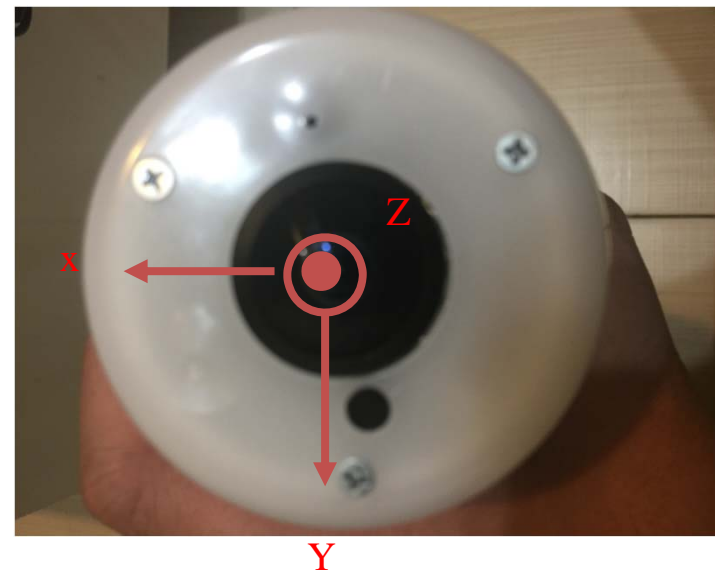
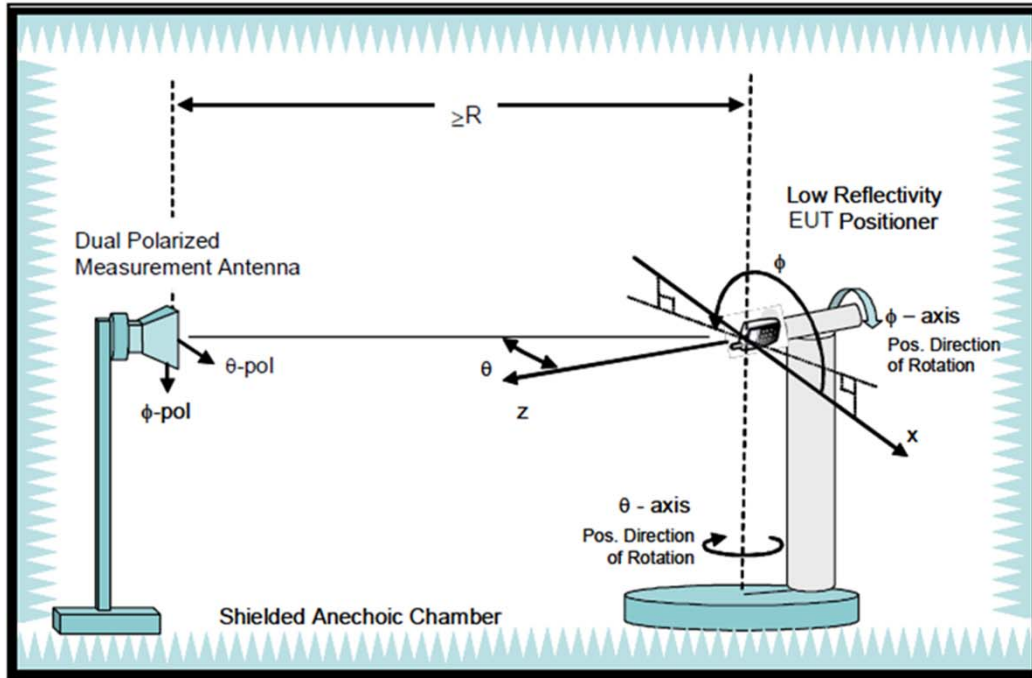
TOLERANCE UNLESS OTHERWISE SPECIFIED		CONFIDENTIAL		INITIAL MODEL:	
DIMENSION	ANGLES	FINISH:	SIZE:	UNIT:	SCALE:
X±	X.±	DRAWING	A4	mm	1:1
.XXX±	0.1	Haok	DESIGNED	CONCURRED	APPROVED
.XXX±	0.05				Darren
PART NAME			PART NO.		
CM210 Wi-Fi MIMO Antenna			G416M101XXXXA-102		
REV. 1			REV. 1		
SHT. 1/1			SHT. 1/1		

CM210 WLAN Antenna Test Report

Created : 2016-12-18

Antenna & IR-Cut Solution Provider

Antenna Coordinate System Definition



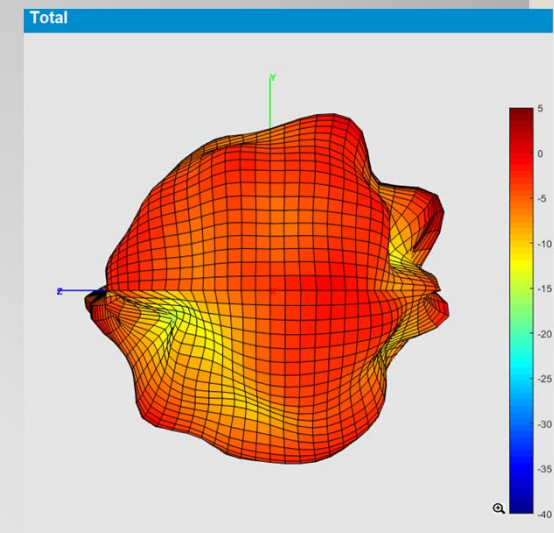
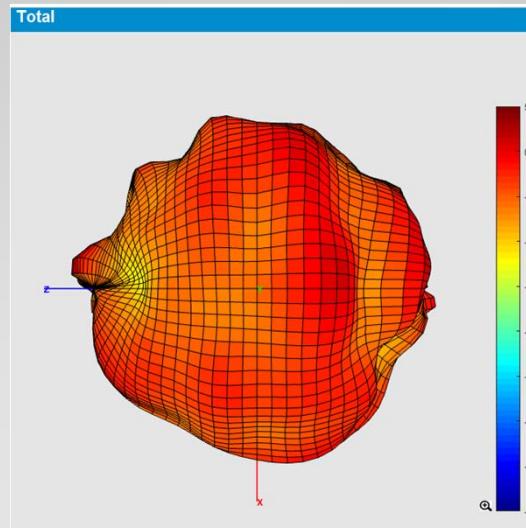
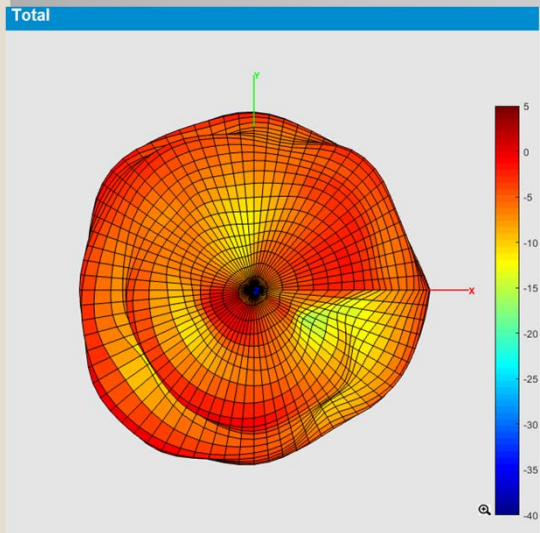
Return Loss

ANT 1



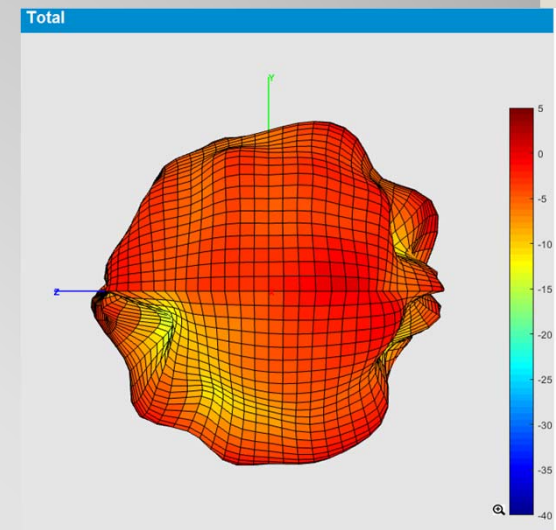
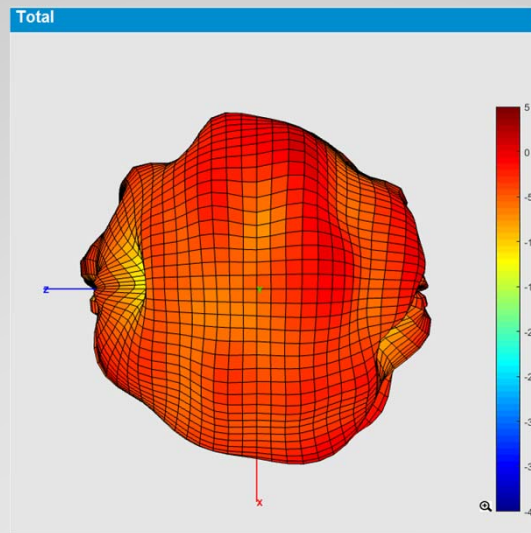
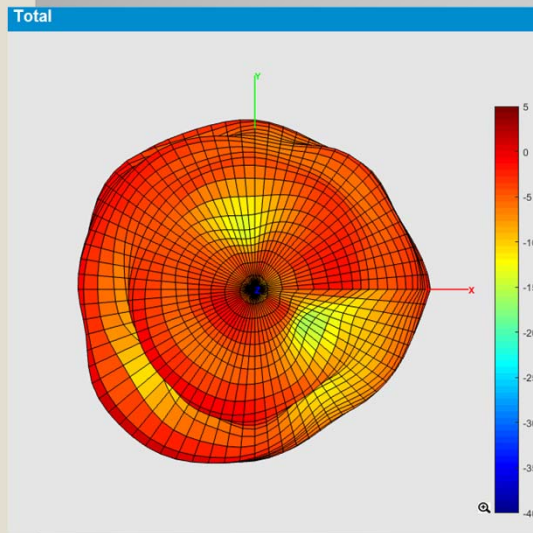
3D Radiation Patterns @ 2400MHz

ANT 1



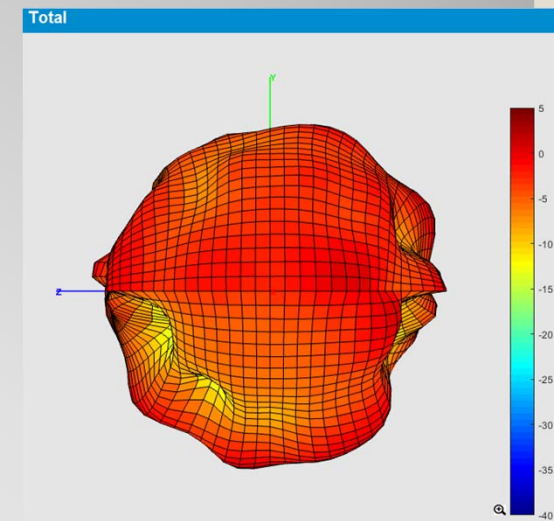
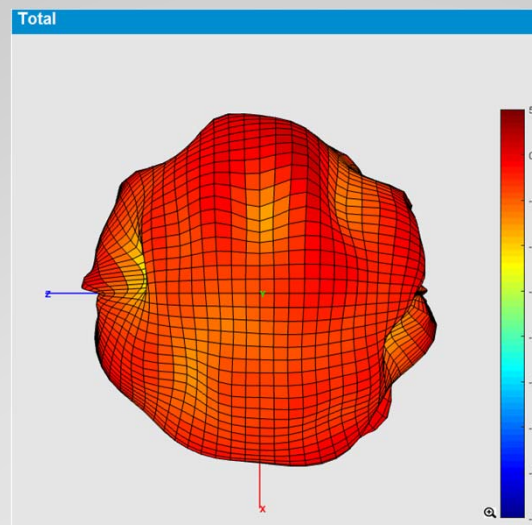
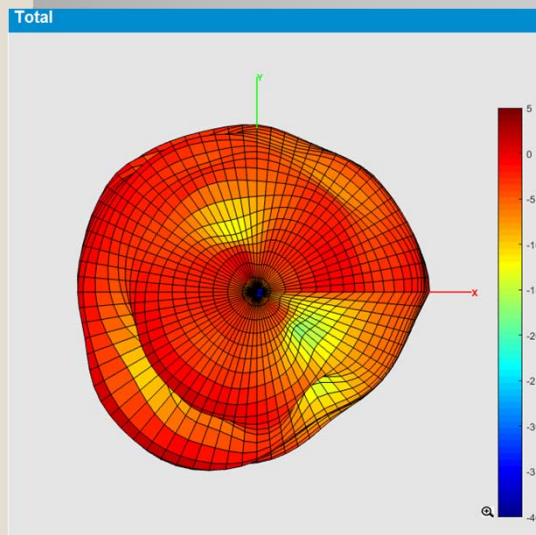
3D Radiation Patterns @ 2450MHz

ANT 1



3D Radiation Patterns @ 2500MHz

ANT 1



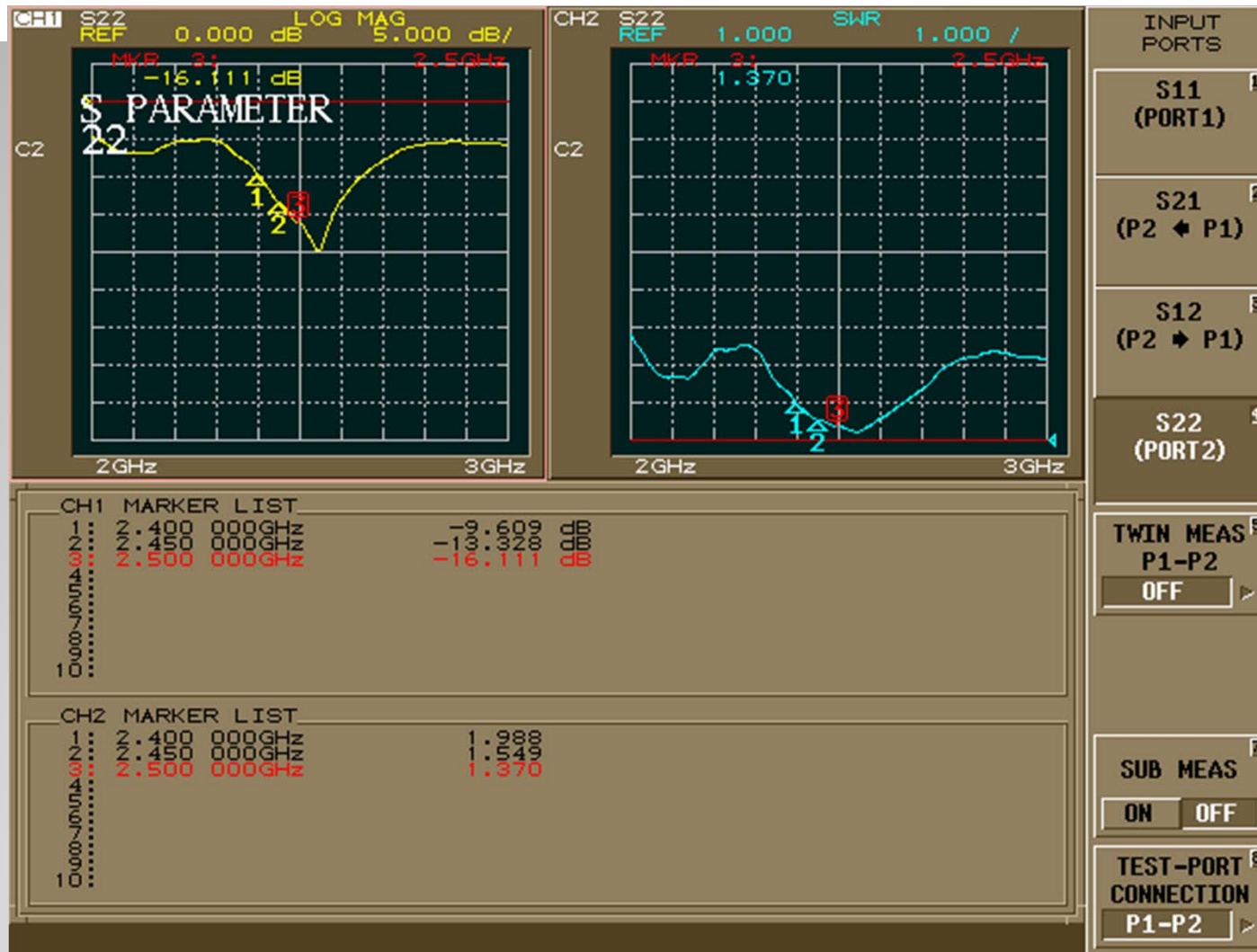
Antenna Gain and Efficiency

ANT 1

Frequency(MHz)	2400	2410	2420	2430	2440	2450	2460	2470	2480	2490	2500
Directivity (dBi)	5.76	5.4	5.08	4.78	4.52	4.62	4.71	4.61	4.65	4.77	4.72
Efficiency (dB)	-3.55	-3.45	-3.24	-3.23	-2.95	-2.96	-2.72	-2.45	-2.47	-2.25	-2.17
Efficiency (%)	45.74	46.69	48.75	48.85	51.77	51.67	54.32	57.48	57.24	59.95	60.98
Gain (dBi)	2.21	1.95	1.84	1.55	1.57	1.66	1.99	2.16	2.18	2.52	2.55

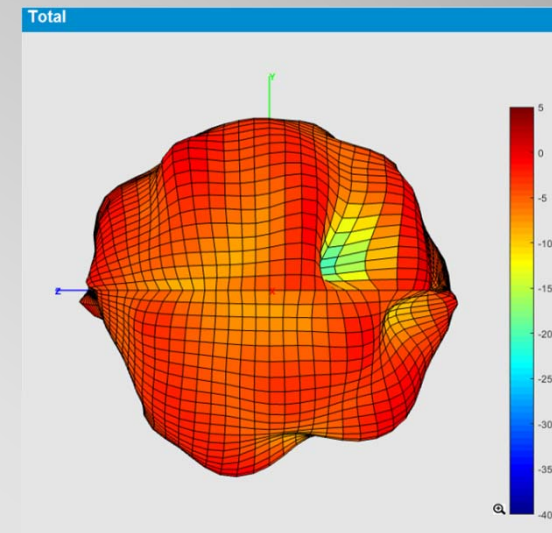
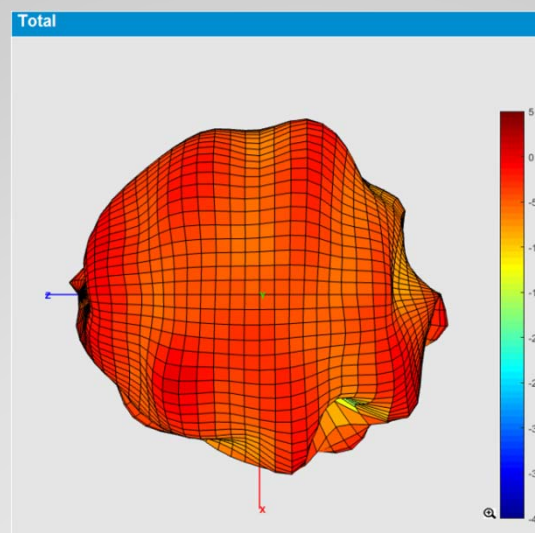
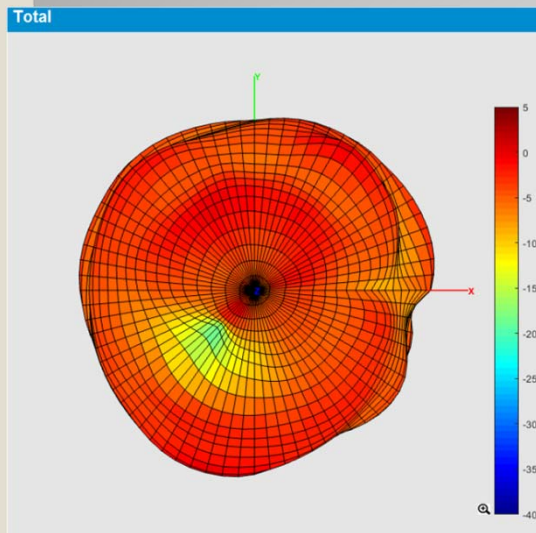
Return Loss

ANT 2



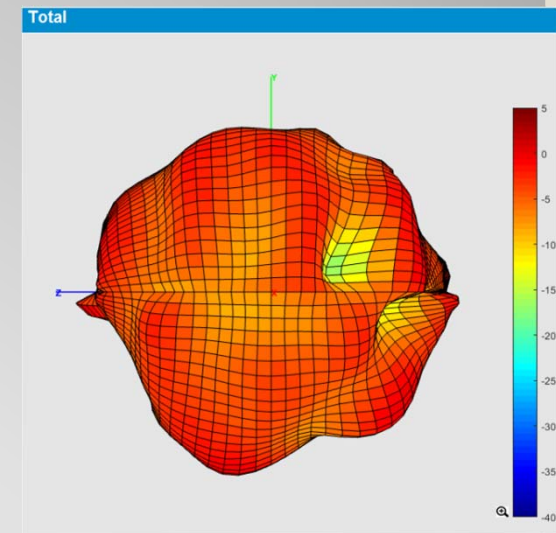
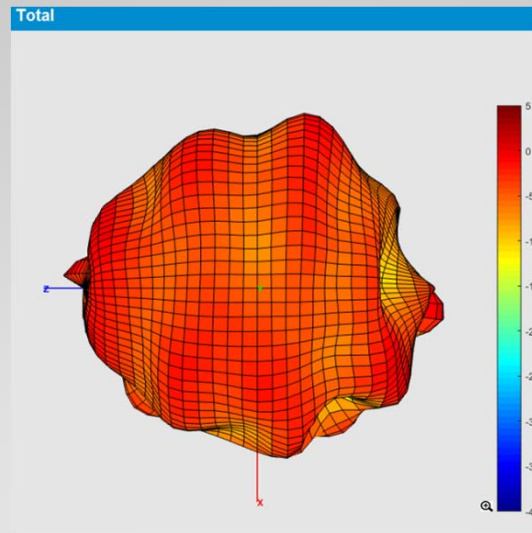
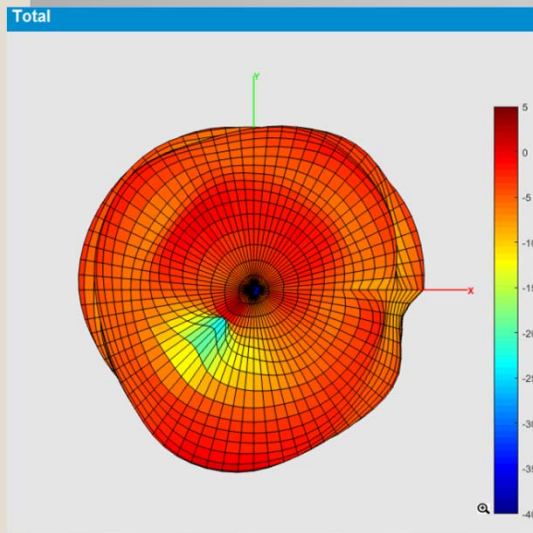
3D Radiation Patterns @ 2400MHz

ANT 2



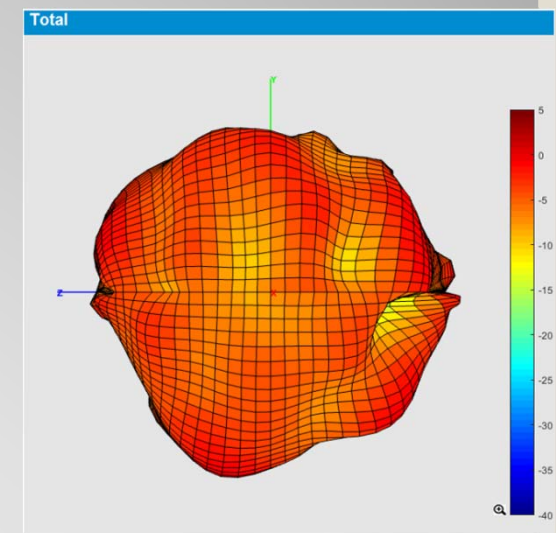
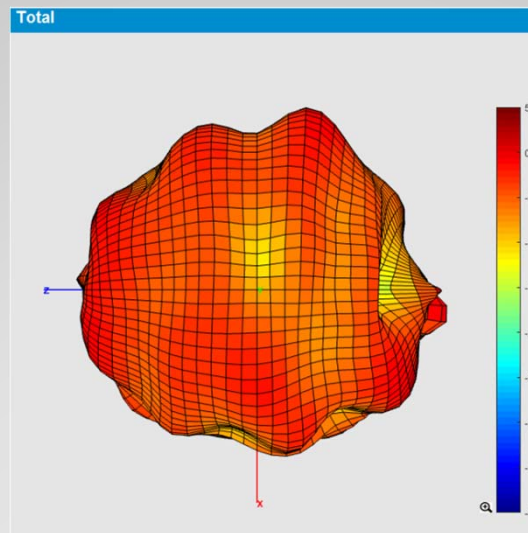
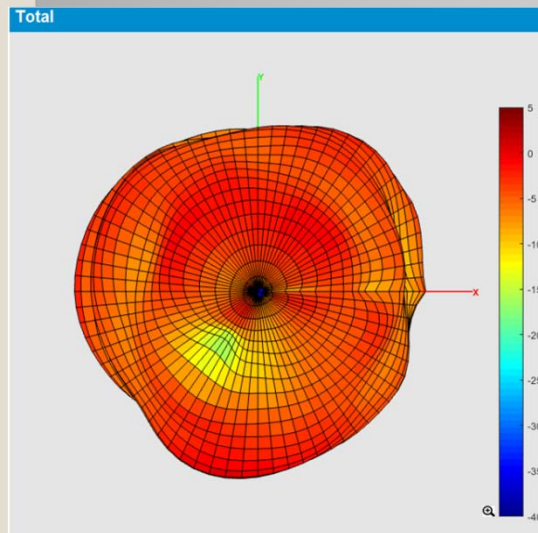
3D Radiation Patterns @ 2450MHz

ANT 2



3D Radiation Patterns @ 2500MHz

ANT 2



Antenna Gain and Efficiency

ANT 2

Frequency(MHz)	2400	2410	2420	2430	2440	2450	2460	2470	2480	2490	2500
Directivity (dBi)	4.42	4.45	4.63	4.6	4.91	5.02	4.98	5.17	5.17	5.12	5.14
Efficiency (dB)	-2.7	-2.89	-2.87	-2.83	-2.93	-2.76	-2.9	-3.03	-2.95	-3.06	-2.92
Efficiency (%)	53.02	51.39	51.56	51.9	51.06	52.5	51.31	50.24	50.89	49.99	51.14
Gain (dBi)	1.72	1.56	1.76	1.77	1.98	2.26	2.08	2.14	2.22	2.06	2.22

Isolation

ANT 1 to ANT 2

