

User Manual

Model: DX02

Foreword

Thank you for purchasing our product. Please read this manual carefully before use and keep it for future reference.

Assertion

The company reserves the final right to interpret the contents given in the manual, and the contents are subject to change without further notice. This manual is prepared only for users' reference. The Company is committed to continuously improving customer operation experience, and the real object shall prevail in case the product disaccords with the manual.

Safety information

To use the product, please read carefully and learn about the following safety measures.

- Never try to open the housing of the products since only authorized maintainers are allowed to maintain the products.
- Body worn camera may show a temperature rise after it works for a long time, and that is really not a fault.
- Use only the attachments provided by the manufacturer.
- Slam into the product artificially, submerge the complete machine, or place the product in a hot environment higher than 60 degrees for a long time.

The Company will assume no responsibility for any damages to the product caused by the practices above.

TABLE OF CONTENTS

SECTION I DESCRIPTION OF COMPONENTS.....	3
SECTION II BASIC OPERATION	4
2.1 STARTUP.....	4
2.2 VIDEO RECORDING	4
2.3 PHOTO TAKING	5
2.4 AUDIO RECORDING	6
2.5 INFRARED NIGHT VIEWING	6
2.6 PLAYBACK.....	6
2.7 INTERPHONE SPEECH TRANSMISSION FUNCTION	8
2.8 RESETTING	8
2.9 VIDEO RESOLUTION RATIO.....	9
2.10 PHOTO-TAKING RESOLUTION RATIO.....	9
2.11 SEGMENTATION TIME.....	9
2.12 MOTION DETECTION FUNCTION	9
2.13 INDICATOR STATE	9
2.14 VOICE BROADCAST	9
2.15 LANGUAGE.....	10
2.16 GPS.....	10
2.17 AES ENCRYPTION FUNCTION (OPTIONAL)	10
SECTION III INSTALLATION AND USE OF MANAGEMENT SOFTWARE (BASIC EDITION).....	11
3.1 OVERVIEW OF SOFTWARE.....	11
3.2 OPERATING SYSTEM	12
3.3 INSTALLATION OF DRIVER	12
3.4 OPEN THE MANAGEMENT SOFTWARE	16
3.5 OPERATING INSTRUCTIONS FOR THE MANAGEMENT SOFTWARE.....	16

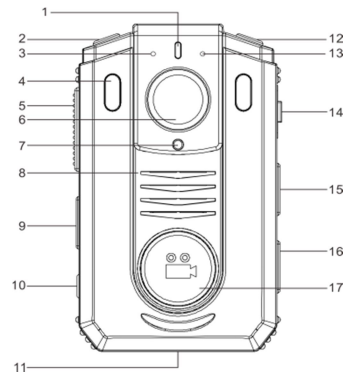
SECTION IV CHARGING MANAGEMENT 21

SECTION V TROUBLE SHOOTING AND SOLUTIONS 21

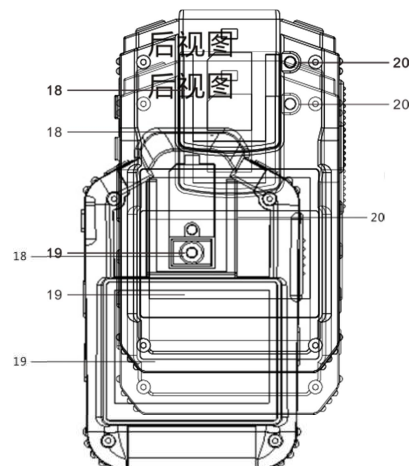
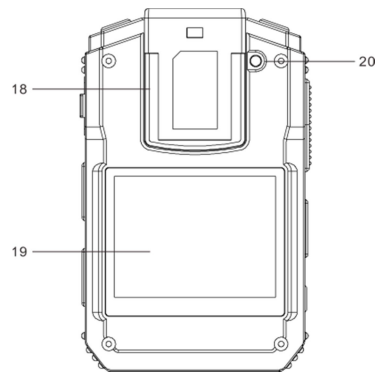
Attachment1 RoHS Ingredient List of China.....22

Section I Description of Components

- 1) Indicator
- 2) Photo taking key
- 3) Local microphone
- 4) Infrared lamp
- 5) Talkback key
- 6) Lens
- 7) Light detection
- 8) Speaker
- 9) Menu key
- 10) Switch key



- 11) Talkback interface/data interface/charging interface
- 12) Audio recording key
- 13) Talkback microphone
- 14) AV IN/USB interface
- 15) IMP key
- 16) Playback key
- 17) Video recording key
- 18) Crocodile clamp interface
- 19) Screen
- 20) Reset key



Section II Basic Operation

2.1 Startup

Push the power key to start up the machine, and push and hold the key for 2s to allow the system to automatically access the preview mode.



- 💡 Note: 1.The top of LCD screen shows from left to right the photo taking format, free space, the number of shot files, and video recording format in sequence.
2.The bottom of LCD screen shows the battery capacity, GPS status,current time and WIFI icon (optional).

2.2 Video recording

The system will automatically access the preview mode after the machine is started up. The system starts audio video recording once the video recording key is pushed. The machine can take a candid photograph and automatically saves it in JPG format if the photo taking key is pushed in process of video recording. The system gives a “Ticktack”, stops video recording, and automatically saves the video taken in H.264 code format if the video recording key is pushed once again.



- ⚡ Note: 1. The status indicator lamp gets red and blinks in process of video recording.
2. The top of LCD screen shows in sequence the image resolution, video recording status indication, free space, the number of shot files, and video resolution.
 3. The bottom of LCD screen on the first line shows the battery capacity, GPS,current time and WIFI icon (optional).
 4. In the video recording mode, press the IMP key to mark the important file. In the preview mode, long press the IMP key to activate/deactivate the WIFI mode (optional).

2.3 Photo taking

The system automatically accesses the preview mode after startup. The operator may push the photo taking key to take a photo, a “Zap”

is given, and the photo taken is automatically saved in JPG format.

2.4 Audio recording

In the preview mode, operator pushes the recording key, a “Ticktack” is given, and audio recording is started; and pushes the recording key once more, a “Ticktack” is given, audio recording is stopped, and the file is automatically saved in WAV format.



💡 Note: In audio recording mode, the status indicator lamp gets yellow and blinks, and a red dot in the top left corner of LCD screen blinks.

2.5 Infrared night viewing

The machine can automatically turn on infrared mode as per the ambient brightness;

💡 Note: 1. Once the infrared lamp is turned on, the image tone may automatically get black and white.

2.6 Playback

2.6.1 Selecting a file type to be played back

In the preview mode, press the playback key to enter the playback mode (Figure 1). Press the audio recording key or the photo taking key to scroll the type of file to be played to the left or right, then press the playback key again to enter the thumbnail playback mode (Figure 2). Press the menu key to return to the preview mode.

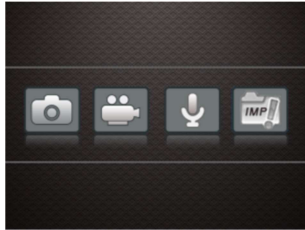


Figure 1



Figure 2

Access the playback thumbnails of video and audio files, push the playback key to access the full screen playback mode, and push the playback key once more to start playing back the files. Pushing the playback key while video and audio files are played back may suspend the playback, pushing the playback key once more may continue playback, and pushing the menu key in process of playback may return to the preview mode; When playback is over, the machine may automatically return to the thumbnail playback mode.

- 💡 Note: Pushing the photo taking key while video files are played back allows the machine to implement fast backward playback, and pushing the recording key allows the machine to implement fast forward playback.

2.6.2 Playing back the image files

After selecting the image file in the thumbnail playback mode, press the playback key to enter the full-screen playback mode. Press the audio recording key or photo taking key to scroll to the previous or next file. Push the menu key to return to the preview mode.



Figure 3

2.6.3. Playing back IMP files

After selecting the IMP file in the playback mode, press the playback key to enter the IMP playback mode. Press the audio recording key or photo taking key to scroll to the previous or next file and press the playback key to play it in full screen.

💡 Note: During video recording, the operator may push once the IMP key and mark the important file, or push and hold the IMP key in preview mode to switch on/off the WIFI mode.

2.6.4 Exiting from the playback

Push the menu key in full screen playback mode to return to the preview mode.

2.7 Interphone speech transmission function

Connect one end of the interphone connecting line to the interphone interface of the body worn camera, connect the other end to an interphone; tune up the interphone, and implement talkback function by operating the speech transmission key, such that the body worn camera can serve as an on-shoulder microphone.

💡 Note: 1. Before connecting the analog radio, please connect the body worn camera first.
2. Please select the correct cable for different intercoms.

2.8 Resetting

Push the reset key if resetting is required.

💡 Note: The operation may unlikely result in missing or damages to file data.

2.9 Video resolution ratio

Operator may set up the video recording resolution ratio of the body worn camera.

Select "1296P30:2304×1296(30)", "1080P30:1920×1080(30)", "720P60:1280×720(60)", "720P30:1280×720(30)" or "480P30:848×480(30)", and then press the menu key to exit.

2.10 Photo-taking resolution ratio

Operator may set up the photo-taking resolution ratio of body worn camera.

Select "33M:7696X4329", "21M:6108X3440", "16M:5376X3024", "12M:4838X2722", "5M:3226X1814" or "4M:2688X1512", and then press the menu key to exit.

2.11 Segmentation time

Operator may set up the video recording segmentation time of the body worn camera.

Select "5 min", "10 min", "15 min", "25min" or "OFF", and then press the menu key to exit.

2.12 Motion Detection Function

Open the function through the menu such that the machine can automatically turn on video recording or photo taking once collision or swinging reaches the triggering status.

2.13 Indicator State

Open the function through the menu to allow the machine to give prompt by status indicator lamp at startup.

2.14 Voice Broadcast

Open the function through the menu to allow the machine to give voice prompt at video recording.

2.15 Language

Select the language prompt through the menu: Chinese and English.

2.16 GPS

GPS Locating: The body worn camera has built-in GPS, the latitude and longitude information will be showed on the recorded video. There is a dot icon shown in the lower left corner , yellow means searching GPS signal , green means GPS signal usable , grey means no signal . The video can be played through the GPS player developed by Unitek itself.

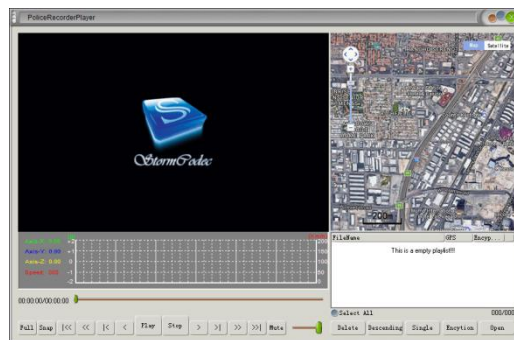
2.17 AES Encryption Function (Optional)

The global pioneer AES128 recording file encryption algorithm is able to provide a strong security protection for your data.

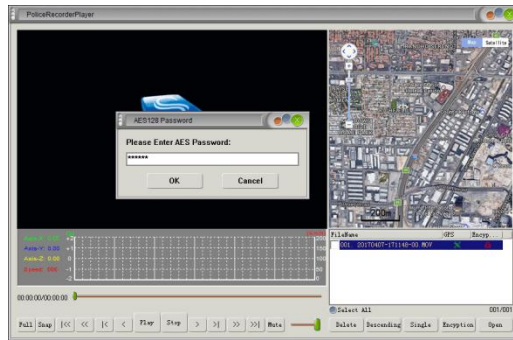
When playing an AES-encrypted file in the body worn camera, an AES icon will be shown in the video playback menu and IMP playback menu. To play this file with any other device, it is required to use the “GPSAESPlayer” which is supplied with product. A password must be entered before playing any AES-encrypted file and the default initial password is 123456.

Note: The file of GPSAESPlayer is contained in the CD supplied with the product. When clicking it to use, you will be prompted to install ffmpeg and LAVFilters programs. Please download and install these programs.

2.16.1 Click the “GPSAESPlayer” icon in the CD to call up the main interface of GPSAESPlayer”.



2.16.2 Click the "Open" button in the lower right corner to open the files to be played. In this case, the dialogue will be popped up to require entering a password . Enter the default password "123456" (the password can be modified by the law enforcement recorder management software).The upper right corner of the player will show the GPS track information while GPS starting up .



2.16.3 This player can also perform functions such as "full screen", "snapshot", "play" and "stop".

Section III Installation and Use of Management Software (Basic Edition)

3.1 Overview of Software

Body worn camera management software (hereinafter referred to as "management software") features advantages of high

confidentiality and tampering proof of evidence files, etc., and supports password modification, time automatic synchronization and other functions.

Note: The version number of management software goes upon the software presented on the supporting compact disc.


3.2 Operating System

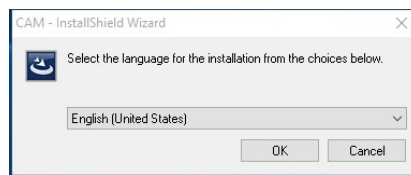
The software supports the operating systems: Windows 7 and higher.

3.3 Installation of Driver

You have to install the driver before you use the management software. The installation method is described below:

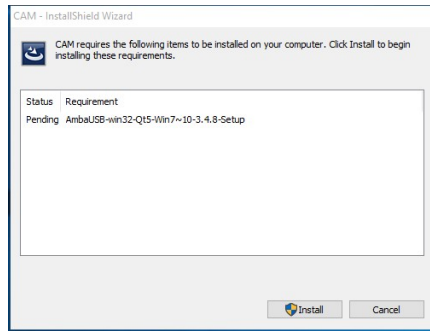
3.3.1 Running the driver

Insert the CD supplied with the body worn camera into CD-ROM driver of the host computer. Open the CD and run the installer  . Select the language "English (United States) " and click "OK".

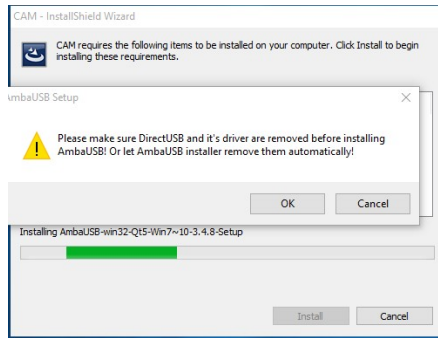


3.3.2 Installing the driver

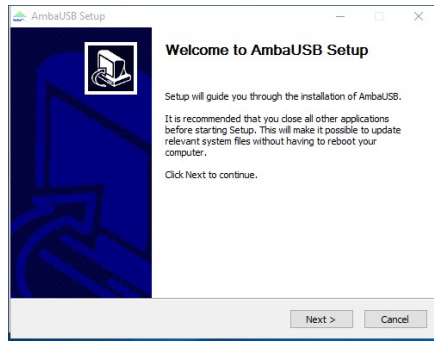
To install the driver, click "Install".



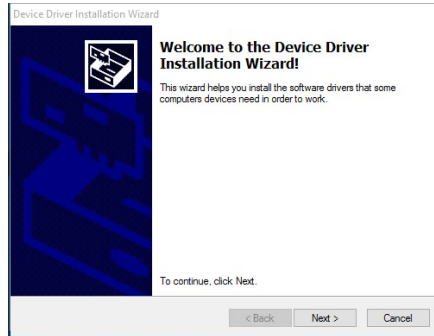
3.3.3 When installing the driver, a prompt window will be popped out. Flow the prompt and click "OK" to continue.



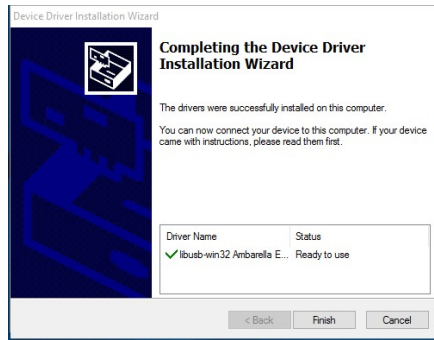
3.3.4 To install AmbaUSB driver, click "Next".



3.3.5 To install the device driver, click "Next".



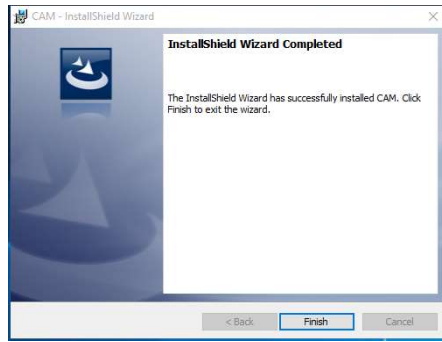
3.3.6 The driver is now installed successfully, click "Finish".




3.3.7 To install installshield wizard, click “Next”.



3.3.8 Installshield wizard is now installed successfully, click “Finish”.



3.4 Open the management software

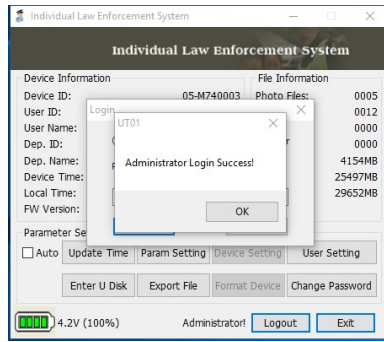
Click on the icon  on the desktop or in the start menu to run.

3.5 Operating instructions for the management software

Run the management software after the body worn camera is connected with the host computer via an USB cable.

3.5.1 Logging in with password

Click the "Login" button on the body worn camera screen. Select the Normal User and enter the initial password "123456", or select "Administrator User" and enter the initial password "888888". Then click the "Login" button in the password input window to log in the system. To operate the management software, enter the password first.

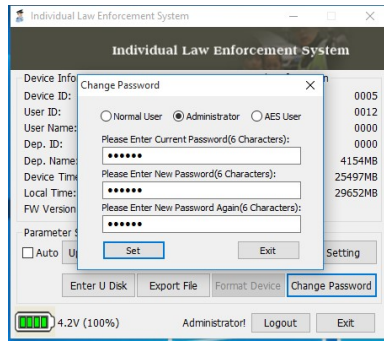


- 💡 Note: 1. The password can only be a 6-place number comprising only numerals or characters.
- 💡 2. A normal user is only authorized to use two parameter setting options, "Enter U Disk", and "Change Password". Click the "Enter U Disk" button to display "Export File", "Search File" and "Change Password". In addition to the above 3 options, an administrator user can also access the "Update Time", "User Setting" and "Parameter Setting" options.

3.5.2 Modifying a password

The password of body worn camera can be modified.

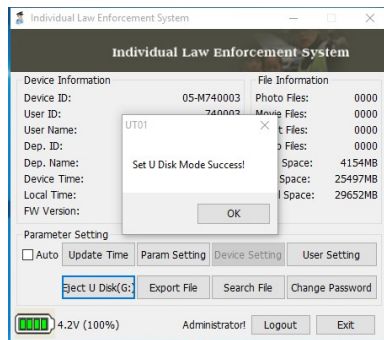
Click the "Change Password" to implement password modification. Type in a correct old password, type in the new password twice, click the "Set", and a prompt "Change Normal User/Administrator Password Success" is displayed.



3.5.3 Removable disc

In the removable disc mode, internal data files on the body worn camera may be accessed.

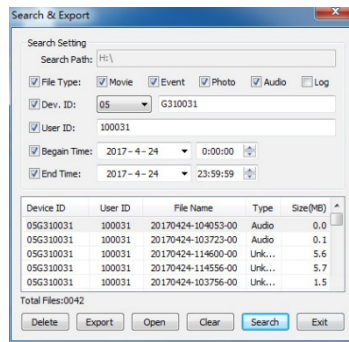
Click the "Enter U Disk" button, see a new removable disc in "My computer", and allow the body worn camera to access removable disc mode.



3.5.4 Searching a file

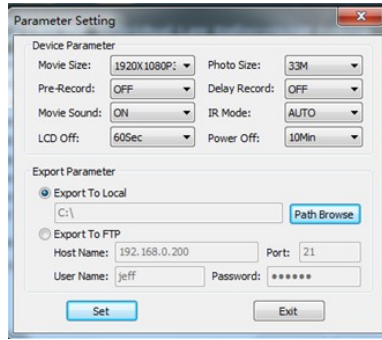
Click "Search File" to pop up the "Search&Export" dialog box. Press the "Search" button after setting the file type, device code, user code, start time and end time respectively. All the data found

according to the preset conditions will be displayed on the screen. Now you can delete, export or open any file, or clear the current screen and exit.



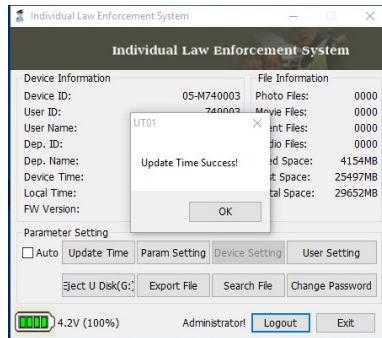
3.5.5 Setting the parameters

Click "Parameter Setting" to pop up the "Parameter Setting" dialog box in which the "Device Parameter" and "Export Parameter" can be set respectively. The "Device Parameter" include the "Movie Size", "Photo Size", "Pre-Record", "Delay Record", "Moive Sound", "IR Mode", "LCD Off" and "Power Off" options; while the "Export Parameter" include the "Export to Local" and "Export to FTP" options. After setting the parameters, press "Set" to save and exit.



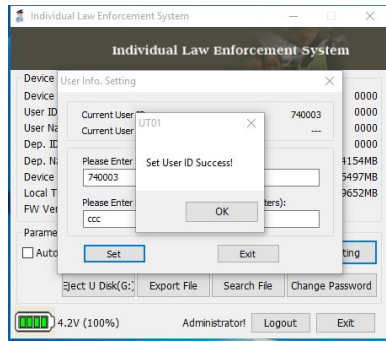
3.5.6 Synchronizing the time

Click the “Update Time”, the machine gives a prompt “Update Time Success!”, and body worn camera will automatically synchronize with the system time of upper computer.



3.5.7 User information

Click the “User Setting” to pop up a dialog box “User Info. Setting” displaying the code and name of current user, type in the new user code and new user name, and click the “Set” to display a prompt “Set User ID Success!”.



Section IV Charging Management

4.1 Battery charging

The body worn camera is provided with built-in rechargeable batteries. When low battery occurs, the body worn camera gives a sound for prompting, and an icon prompt will also be shown on the screen.

Power adapter charging: Connect the body worn camera to power adapter for charging, the status indicator lamp remains red in process of charging, and it goes out when full charging is achieved. Charging takes about 6 hours.

- 💡 Note: 1. It is recommended to charge the batteries in shutdown mode.
- 2. Charge the batteries once every 3 months during long-term non-use so as to avoid failure of the batteries.

Section V Trouble shooting and Solutions

Symptom	Reason	Solution
---------	--------	----------

Impossible to start	<ul style="list-style-type: none"> ● The battery power is insufficient 	<ul style="list-style-type: none"> ● Fully charge the batteries using a power adapter
Display incorrect time/date	<ul style="list-style-type: none"> ● Time displayed on body worn camera is inaccurate 	<ul style="list-style-type: none"> ● Access file management system to set up the time over again
Photo taking/video recording obtains blurring and unclear images	<ul style="list-style-type: none"> ● Lens is dirty 	<ul style="list-style-type: none"> ● Clean the lens using clean flannelette
The recorder is not recognized when it is connected to the management system	<ul style="list-style-type: none"> ● USB cable is inserted improperly ● Type in an incorrect password 	<ul style="list-style-type: none"> ● Reinsert the USB ● Check whether the typed-in password is correct
Power adapter fails to charge the batteries	<ul style="list-style-type: none"> ● Poor contact to the power cord ● Power plug is loosened 	<ul style="list-style-type: none"> ● Check whether the body worn camera and power adapter for good contact ● Check and insert the plug properly

Accessory 1 RoHS Ingredient List of China

Names and contents of hazardous substances or elements entrained by the product:

	Poisonous and harmful substance or element
--	--

Component name	Lead (Pb)	Mercury (Hg)	Cadmium (Cd)	Sexavalent chrome (Cr)	Polybrominated Biphenyls (PBB)	PBDE
Housing body	○	/	/	/	/	/
Key plating	○	/	/	/	/	/
LCD screen	○	/	/	/	/	/
Attachment wires	×	/	○	/	/	/
Lens devices	×	/	○	/	/	/
Resistance	×	/	/	/	/	/
Circuit board	/	○	○	○	○	○
Battery	○	/	○	/	/	/

○: Indicating that contents of toxic hazardous substances in all homogeneous materials of the component are below the limits specified in SJ/T11363-2006.

×: Indicating that the content of the toxic hazardous substance in one type of homogeneous material of the component is higher than the limits specified in SJ/T11363-2006.

/: Indicating that the toxic hazardous substance is not detected in the component.

Note: Up to 90% of components of the product are made of non-harmful environment-friendly materials, and the components containing toxic hazardous substances are applied in the product since people fail to have the toxic substances or

elements substituted due to the global technology development level constraints.

FCC STATEMENT

This device complies with Part 15 of the FCC rules. Operation is subject to the following two conditions: 1) this device may not cause harmful interference, and 2) this device must accept any interference received, including interference that may cause undesired operation.

Changes or modifications not expressly approved by the party responsible for compliance could void your authority to operate the equipment.

NOTE: This equipment has been tested and found to comply with the limits for a Class B digital device, pursuant to Part 15 of the FCC Rules. These limits are designed to provide reasonable protection against harmful interference in a residential installation. This equipment generates uses and can radiate radio frequency energy and, if not installed and used in accordance with the instructions, may cause harmful interference to radio communications. However, there is no guarantee that interference will not occur in a particular installation. If this equipment does

cause harmful interference to radio or television reception, which can be determined by turning the equipment off and on, the user is encouraged to try to correct the interference by one or more of the following measures:

Reorient or relocate the receiving antenna.

Increase the separation between the equipment and receiver.

Connect the equipment into an outlet on a circuit different from that to which the receiver is connected.

Consult the dealer or an experienced radio/TV technician for help.