
FCC Test Report

Report No.: PTC-DQ-01170310201-FC02

FCC ID : 2AMBYYPHSH01

APPLICATION PURPOSE : Original Equipment

PRODUCT DESIGNATION : Y-cam Protect Hub

BRAND NAME : 

MODEL NAME : YPHSH01

CLIENT : Y-cam Solutions Ltd

DATE OF ISSUE : June 05, 2017

STANDARD(S) : FCC Part 15 Rules

REPORT VERSION : V1.0

DongGuan Precise Testing Service Co., Ltd.

CAUTION:

This report shall not be reproduced except in full without the written permission of the test laboratory and shall not be quoted out of context.

Report Revise Record

Report Version	Revise Time	Issued Date	Valid Version	Notes
V1.0	/	June 05, 2017	Valid	Original Report

TABLE OF CONTENTS

1. VERIFICATION OF CONFORMITY	4
2. GENERAL INFORMATION.....	5
2.1. PRODUCT DESCRIPTION	5
2.2. RELATED SUBMITTAL(S) / GRANT (S)	5
2.3. TEST METHODOLOGY	5
2.4. SPECIAL ACCESSORIES	5
2.5. EQUIPMENT MODIFICATIONS	5
3. MEASUREMENT UNCERTAINTY.....	6
4. DESCRIPTION OF TEST MODES.....	6
5. SYSTEM TEST CONFIGURATION	6
5.1. EQUIPMENT USED IN EUT SYSTEM.....	6
5.2. SUMMARY OF TEST RESULTS	6
6. TEST FACILITY.....	7
7. RADIATED EMISSION.....	8
7.1. MEASUREMENT PROCEDURE.....	8
7.2. TEST SETUP	10
7.3. TEST RESULT	11
8. FCC LINE CONDUCTED EMISSION TEST	15
8.1. LIMITS OF LINE CONDUCTED EMISSION TEST	15
8.2. BLOCK DIAGRAM OF LINE CONDUCTED EMISSION TEST	15
8.3. PRELIMINARY PROCEDURE OF LINE CONDUCTED EMISSION TEST	16
8.4. FINAL PROCEDURE OF LINE CONDUCTED EMISSION TEST	16
8.5. TEST RESULT OF LINE CONDUCTED EMISSION TEST	17
APPENDIX A: PHOTOGRAPHS OF TEST SETUP.....	21
APPENDIX B: PHOTOGRAPHS OF EUT	24

**1. VERIFICATION OF CONFORMITY**

Applicant	Y-cam Solutions Ltd
Address	2nd Floor Allied House, 29-39 London Road, Twickenham, TW1 3SZ, United Kingdom
Manufacturer	Y-cam Solutions Ltd
Address	2nd Floor Allied House, 29-39 London Road, Twickenham, TW1 3SZ, United Kingdom
Product Designation	Y-cam Protect Hub
Brand Name	
Test Model	YPHSH01
Date of test	June 01, 2017 to June 02, 2017
Deviation	None
Condition of Test Sample	Normal
Test Result	Pass
Report Template	AGCRT-US-BR/RF (2013-03-01)

We hereby certify that:

The above equipment was tested by Dongguan Precise Testing Service Co., Ltd. The test data, data evaluation, test procedures, and equipment configurations shown in this report were made in accordance with the procedures given in ANSI C63.4 (2014) and the energy emitted by the sample EUT tested as described in this report is in compliance with radiated emission limits of FCC Rules Part 15 subpart B.

Testing Engineer

August Qiu June 05, 2017

Technical Manager

Hack Ye June 05, 2017

Authorized Signatory

Chris Du June 05, 2017

August Qiu

Hack Ye

Chris Du

2. GENERAL INFORMATION

2.1. PRODUCT DESCRIPTION

A major technical description of EUT is described as following

Hardware Version	Y_CAM_V3
Software Version	N/A
EUT Supply	DC 7.4V by battery or DC 12V by adapter

2.2. RELATED SUBMITTAL(S) / GRANT (S)

This submittal(s) (test report) is intended for **FCC ID: 2AMBYYPHSH01** filing to comply with Section 15.107&109 of the FCC Part 15, Subpart B Rules.

2.3. TEST METHODOLOGY

Both conducted and radiated testing was performed according to the procedures in ANSI C63.4 (2014). Radiated testing was performed at an antenna to EUT distance 3 meters.

2.4. SPECIAL ACCESSORIES

Refer to section 5.1.

2.5. EQUIPMENT MODIFICATIONS

Not available for this EUT intended for grant.



3. MEASUREMENT UNCERTAINTY

Conducted measurement: $\pm 3.18\text{dB}$

Radiated measurement: $\pm 3.91\text{dB}$

4. DESCRIPTION OF TEST MODES

NO.	TEST MODE DESCRIPTION
1	Connected to PC for data exchange
2	Receiver mode at 433.92MHz

5. SYSTEM TEST CONFIGURATION

5.1. EQUIPMENT USED IN EUT SYSTEM

Item	Equipment	Model No.	ID or Specification	Remark
1	Y-Cam Solutions Ltd	YPHSH01	2AMBYYPHSH01	EUT
2	SONY PC	E1412AYCW	N/A	Support
3	PC adapter	A13-040A3A	N/A	Support
4	Adapter	FJ_SW1202000N	DC 12V/2A	Marketed

5.2. SUMMARY OF TEST RESULTS

FCC RULES	DESCRIPTION OF TEST	RESULT
§15.109	Radiated Emission	Compliant
§15.107	Conducted Emission	Compliant

6. TEST FACILITY

Site	Dongguan Precise Testing Service Co., Ltd.
Location	Building D, Baoding Technology Park, Guangming Road2, Dongcheng District, Dongguan, Guangdong, China
FCC Registration No.	371540
Description	The test site is constructed and calibrated to meet the FCC requirements in documents ANSI C63.4:2014.

ALL TEST EQUIPMENT LIST

Radiated Emission Test Site					
Name of Equipment	Manufacturer	Model Number	Serial Number	Last Calibration	Due Calibration
EMI Test Receiver	Rohde & Schwarz	ESCI	101417	July 3, 2016	July 2, 2017
Trilog Broadband Antenna (25M-1GHz)	SCHWARZBECK	VULB9160	9160-3355	July 3, 2016	July 2, 2017
Signal Amplifier	SCHWARZBECK	BBV 9475	9745-0013	July 3, 2016	July 2, 2017
RF Cable	SCHWARZBECK	AK9515E	96221	July 3, 2016	July 2, 2017
3m Anechoic Chamber	CHENGYU	966	PTS-001	June 3, 2016	June 2, 2017
MULTI-DEVICE Positioning Controller	Max-Full	MF-7802	MF780208339	N/A	N/A
Active loop antenna (9K-30MHz)	Schwarzbeck	FMZB1519	1519-038	June 3, 2016	June 2, 2017
Spectrum analyzer	Agilent	E4407B	MY46185649	June 3, 2016	June 2, 2017

Conducted Emission Test Site					
Name of Equipment	Manufacturer	Model Number	Serial Number	Last Calibration	Due Calibration
EMI Test Receiver	Rohde & Schwarz	ESCI	101417	July 3, 2016	July 2, 2017
Artificial Mains Network	Narda	L2-16B	000WX31025	July 3, 2016	July 2, 2017
Artificial Mains Network (AUX)	Narda	L2-16B	000WX31026	July 3, 2016	July 2, 2017
RF Cable	SCHWARZBECK	AK9515E	96222	July 3, 2016	July 2, 2017
Shielded Room	CHENGYU	843	PTS-002	June 3, 2016	June 2, 2017

7. RADIATED EMISSION

7.1. MEASUREMENT PROCEDURE

1. Configure the EUT according to ANSI C63.4. The EUT was placed on the top of the turntable 0.8 meter above ground. The phase center of the receiving antenna mounted on the top of a height-variable antenna tower was placed 3 meters far away from the turntable.
2. Power on the EUT and all the supporting units. The turntable was rotated by 360 degrees to determine the position of the highest radiation.
3. The height of the broadband receiving antenna was varied between one meter and four meters above ground to find the maximum emissions field strength of both horizontal and vertical polarization.
4. For each suspected emissions, the antenna tower was scan (from 1 M to 4 M) and then the turntable was rotated (from 0 degree to 360 degrees) to find the maximum reading.
5. Set the test-receiver system to Peak or CISPR quasi-peak Detect Function with specified bandwidth under Maximum Hold Mode.
6. For emissions below 1GHz, use 120KHz RBW and VBW \geq 3RBW for QP reading.
7. For emissions above 1GHz, use 1MHz VBW and RBW for peak reading. Then 1MHz RBW and 10Hz VBW for average reading in spectrum analyzer.
8. When the radiated emissions limits are expressed in terms of the average value of the emissions, and pulsed operation is employed, the measurement field strength shall be determined by averaging over one complete pulse train, including blanking intervals, as long as the pulse train does not exceed 0.1 seconds. As an alternative (provided the transmitter operates for longer than 0.1 seconds) or in cases where the pulse train exceeds 0.1 seconds, the measured field strength shall be determined from the average absolute voltage during a 0.1 second interval during which the field strength is at its maximum values.
9. If the emissions level of the EUT in peak mode was 3 dB lower than the average limit specified, then testing will be stopped and peak values of EUT will be reported, otherwise, the emissions which do not have 3 dB margin will be repeated one by one using the quasi-peak method for below 1GHz.
10. For testing above 1GHz, the emissions level of the EUT in peak mode was lower than average limit (that means the emissions level in peak mode also complies with the limit in average mode), then testing will be stopped and peak values of EUT will be reported, otherwise, the emissions will be measured in average mode again and reported.
11. In case the emission is lower than 30MHz, loop antenna has to be used for measurement and the recorded data should be QP measured by receiver. High - Low scan is not required in this case.
12. Only the worst case is reported.



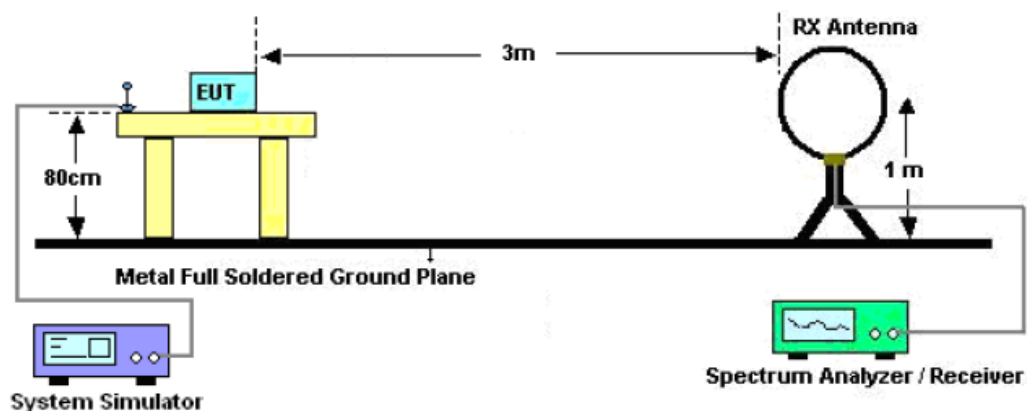
The following table is the setting of spectrum analyzer and receiver.

Spectrum Parameter	Setting
Start ~Stop Frequency	9KHz~150KHz/RBW 200Hz for QP
Start ~Stop Frequency	150KHz~30MHz/RBW 9KHz for QP
Start ~Stop Frequency	30MHz~1000MHz/RBW 120KHz for QP
Start ~Stop Frequency	1GHz~26.5GHz 1MHz/1MHz for Peak, 1MHz/10Hz for Average

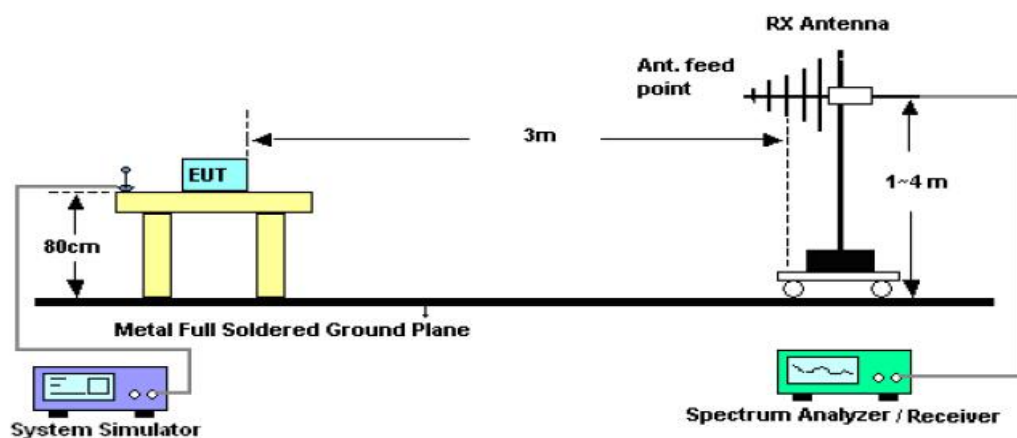
Receiver Parameter	Setting
Start ~Stop Frequency	9KHz~150KHz/RBW 200Hz for QP
Start ~Stop Frequency	150KHz~30MHz/RBW 9KHz for QP
Start ~Stop Frequency	30MHz~1000MHz/RBW 120KHz for QP

7.2. TEST SETUP

Radiated Emission Test-Setup Frequency Below 30MHz



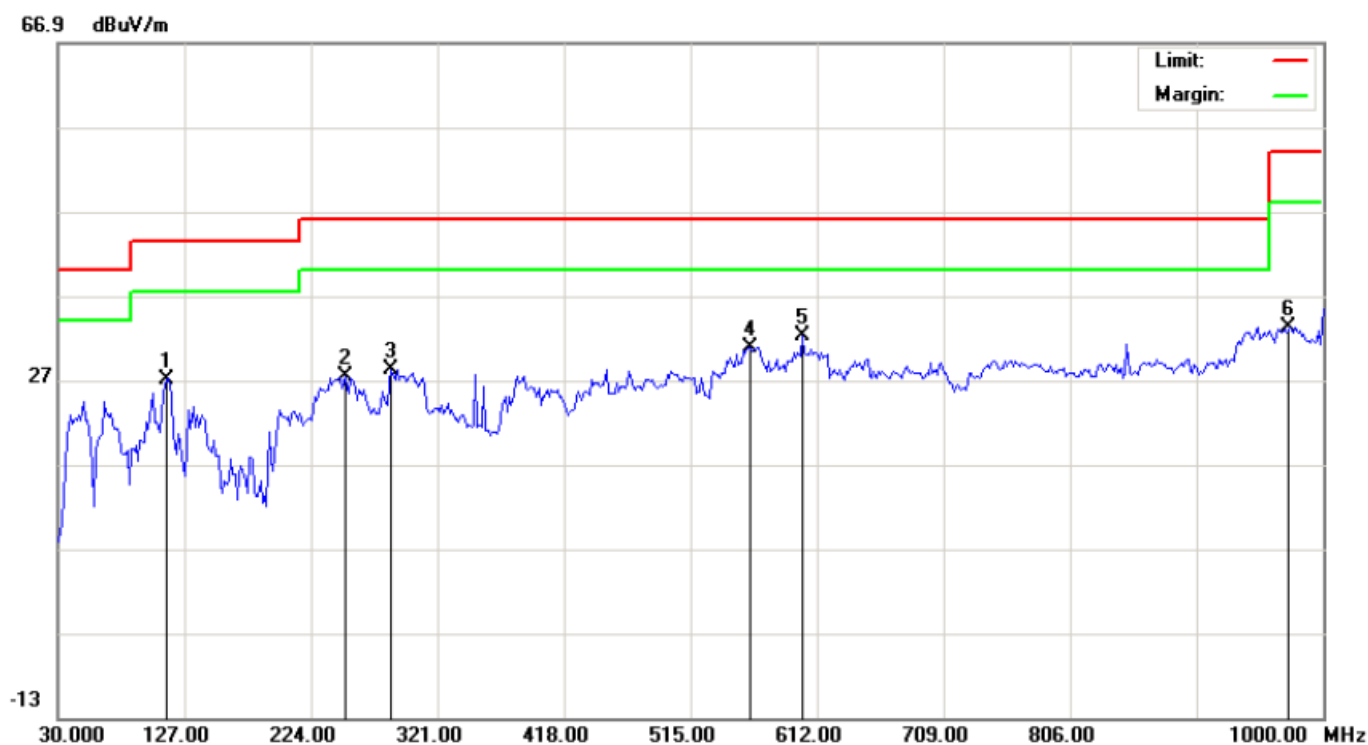
RADIATED EMISSION TEST SETUP 30MHz-1000MHz



**7.3. TEST RESULT****RADIATED EMISSION BELOW 30MHz**

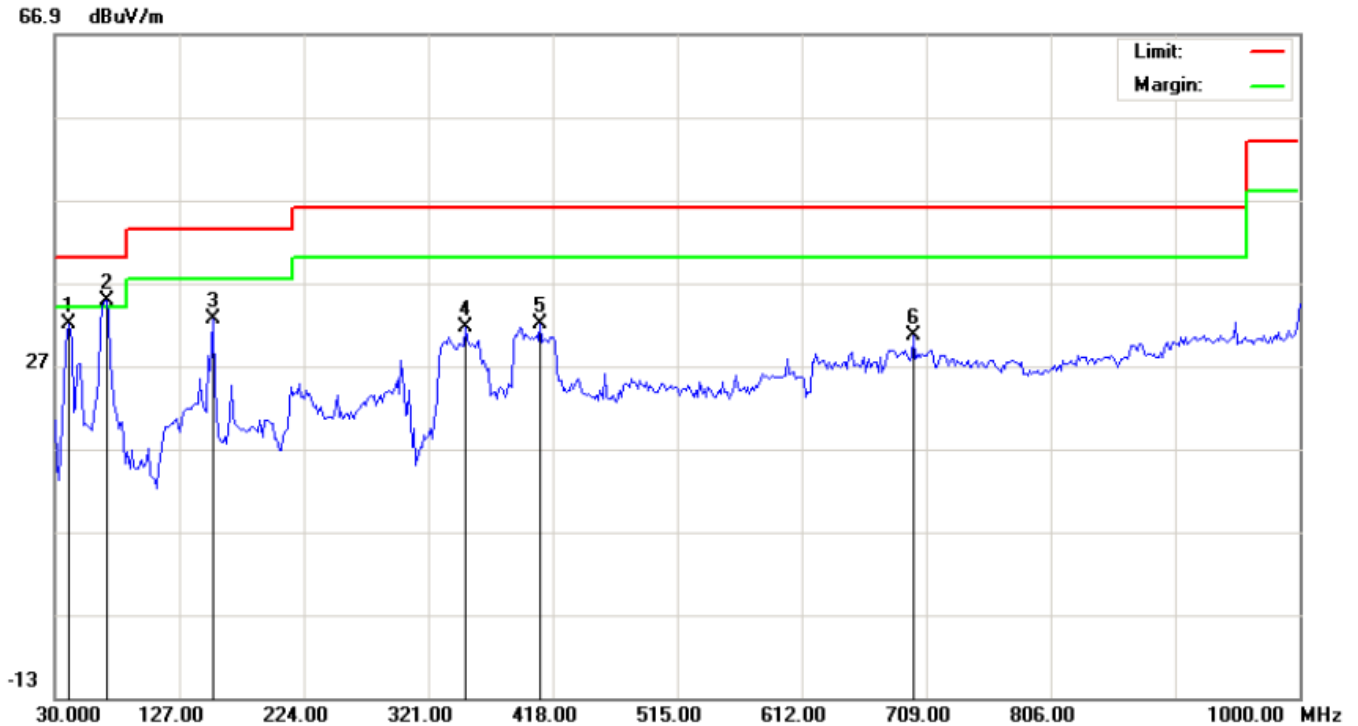
No emission found between lowest internal used/generated frequencies to 30MHz.

Mode 1

RADIATED EMISSION BELOW 1GHZ-Horizontal

No.	Mk	Freq.	Reading	Factor	Measurement	Limit	Over	Detector	Antenna Height	Table Degree	Comment
		MHz	dBuV	dB/m	dBuV/m	dBuV/m	dB		cm	degree	
1		114.0666	19.87	7.23	27.10	43.50	-16.40	peak			
2		249.8667	20.52	6.91	27.43	46.00	-18.57	peak			
3		285.4331	15.31	12.93	28.24	46.00	-17.76	peak			
4		560.2667	8.10	22.74	30.84	46.00	-15.16	peak			
5	*	600.6833	8.55	23.73	32.28	46.00	-13.72	peak			
6		974.1332	3.39	29.77	33.16	54.00	-20.84	peak			

RADIATED EMISSION BELOW 1GHZ-Vertical



No.	Mk	Freq.	Reading	Factor	Measurement	Limit	Over	Detector	Antenna Height	Table Degree	Comment
		MHz	dBuV	dB/m	dBuV/m	dBuV/m	dB		cm	degree	
1		41.3166	23.18	8.81	31.99	40.00	-8.01	peak			
2	*	70.4167	30.66	4.16	34.82	40.00	-5.18	peak			
3		152.8667	17.37	15.28	32.65	43.50	-10.85	peak			
4		350.1000	12.86	18.74	31.60	46.00	-14.40	peak			
5		408.3000	12.65	19.32	31.97	46.00	-14.03	peak			
6		699.2999	5.51	25.17	30.68	46.00	-15.32	peak			

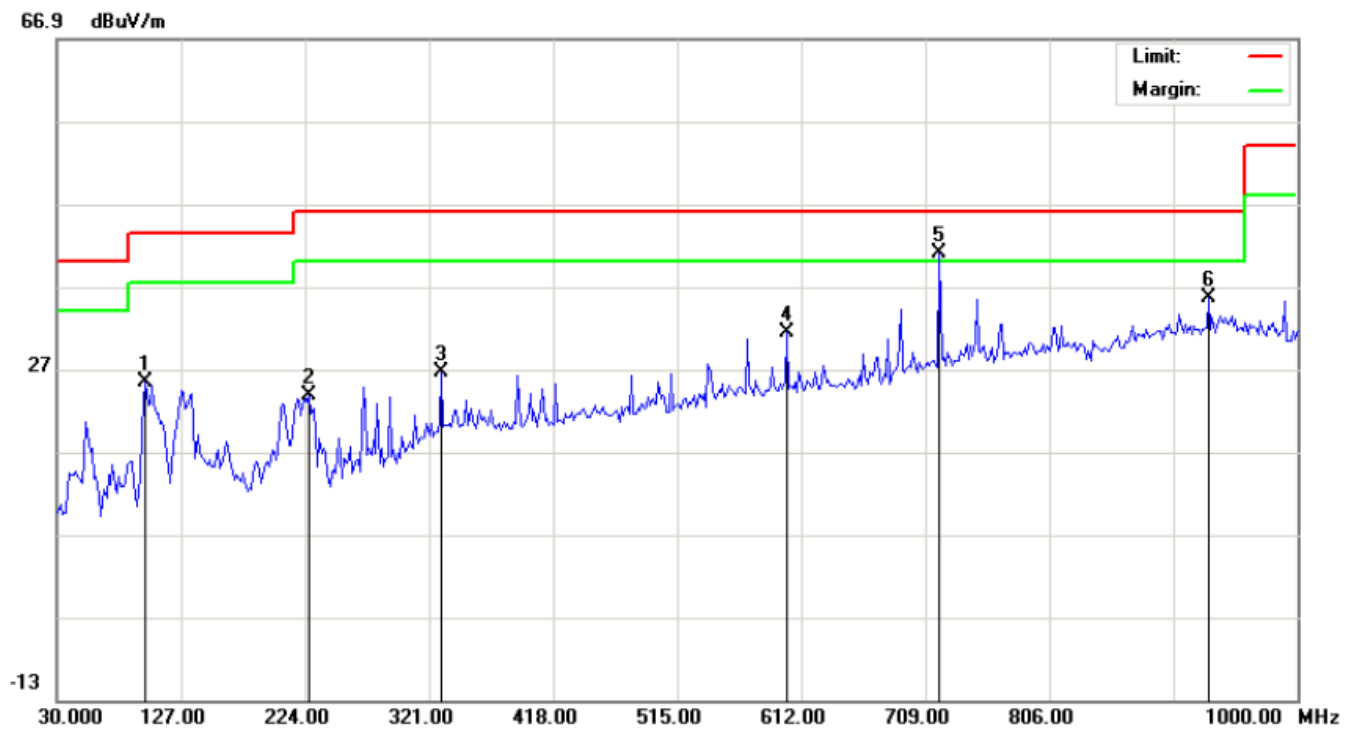
RESULT: PASS

- Note:** 1. Factor=Antenna Factor + Cable loss - Amplifier gain, Margin=Measurement-Limit.
2. The "Factor" value can be calculated automatically by software of measurement system.
3. Only the data of the worst case would be record in this test report.
4. Emissions range from 1GHz to 2GHz have 20dB margin. No recording in the test report.



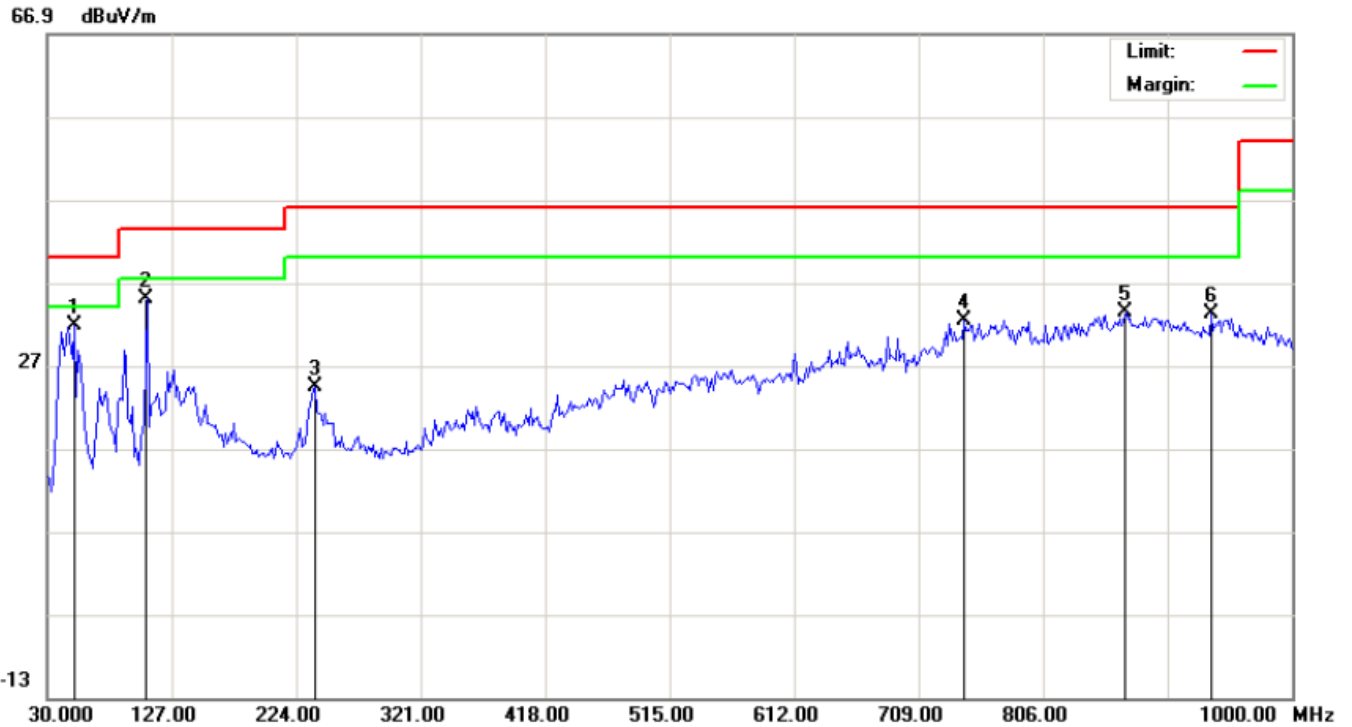
Mode 2

RADIATED EMISSION BELOW 1GHZ-Horizontal



No.	Mk	Freq.	Reading	Factor	Measurement	Limit	Over	Detector	Antenna Height	Table Degree	Comment
		MHz	dBuV	dB/m	dBuV/m	dBuV/m	dB		cm	degree	
1		99.5167	15.31	10.00	25.31	43.50	-18.19	peak			
2		227.2333	14.51	9.22	23.73	46.00	-22.27	peak			
3		330.6999	9.25	17.45	26.70	46.00	-19.30	peak			
4		600.6833	7.68	23.73	31.41	46.00	-14.59	peak			
5	*	720.3166	15.17	25.77	40.94	46.00	-5.06	peak			
6		930.4832	6.08	29.46	35.54	46.00	-10.46	peak			

RADIATED EMISSION BELOW 1GHZ-Vertical



No.	Mk	Freq.	Reading	Factor	Measurement	Limit	Over	Detector	Antenna Height	Table Degree	Comment
		MHz	dBuV	dB/m	dBuV/m	dBuV/m	dB		cm	degree	
1	*	51.0167	23.57	8.23	31.80	40.00	-8.20	peak			
2		107.5999	34.33	0.68	35.01	43.50	-8.49	peak			
3		238.5500	11.62	12.78	24.40	46.00	-21.60	peak			
4		744.5666	5.94	26.47	32.41	46.00	-13.59	peak			
5		870.6666	5.55	27.85	33.40	46.00	-12.60	peak			
6		936.9500	3.51	29.64	33.15	46.00	-12.85	peak			

RESULT: PASS

- Note:** 1. Factor=Antenna Factor + Cable loss - Amplifier gain, Margin=Measurement-Limit.
2. The "Factor" value can be calculated automatically by software of measurement system.
3. Only the data of the worst case would be record in this test report.
4. Emissions range from 1GHz to 2GHz have 20dB margin. No recording in the test report.

8. FCC LINE CONDUCTED EMISSION TEST

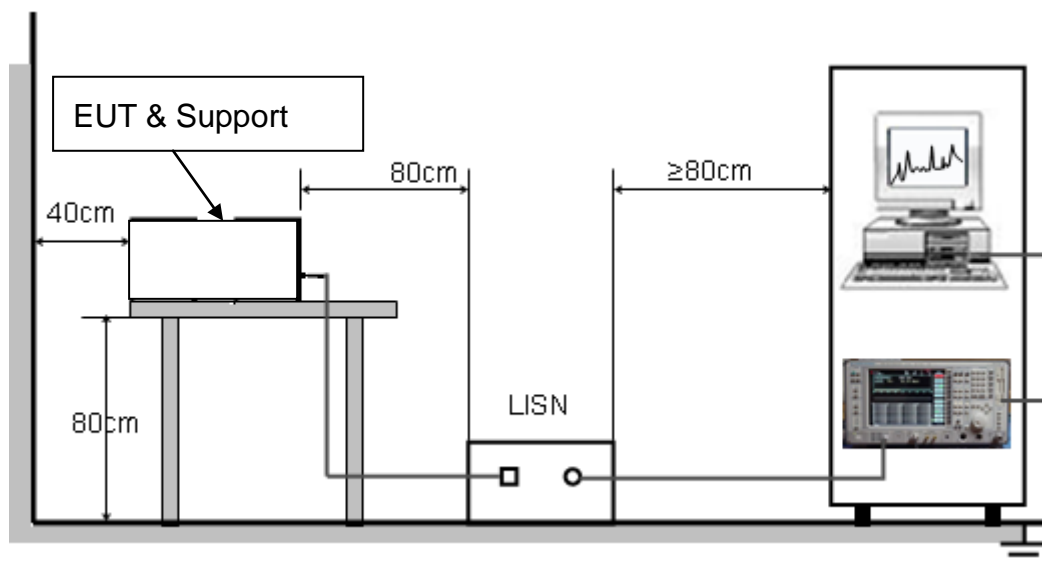
8.1. LIMITS OF LINE CONDUCTED EMISSION TEST

Frequency	Maximum RF Line Voltage	
	Q.P.(dBuV)	Average(dBuV)
150kHz~500kHz	66-56	56-46
500kHz~5MHz	56	46
5MHz~30MHz	60	50

Note:

1. The lower limit shall apply at the transition frequency.
2. The limit decreases linearly with the logarithm of the frequency in the range 0.15 MHz to 0.50 MHz.

8.2. BLOCK DIAGRAM OF LINE CONDUCTED EMISSION TEST





8.3. PRELIMINARY PROCEDURE OF LINE CONDUCTED EMISSION TEST

1. The equipment was set up as per the test configuration to simulate typical actual usage per the user's manual. When the EUT is a tabletop system, a wooden table with a height of 0.8 meters is used and is placed on the ground plane as per ANSI C63.4 (see Test Facility for the dimensions of the ground plane used). When the EUT is a floor-standing equipment, it is placed on the ground plane which has a 3-12 mm non-conductive covering to insulate the EUT from the ground plane.
2. Support equipment, if needed, was placed as per ANSI C63.4.
3. All I/O cables were positioned to simulate typical actual usage as per ANSI C63.4.
4. All support equipments received AC120V/60Hz power from a LISN, if any.
5. The EUT received DC charging voltage by PC which received 120V/60Hz power by a LISN..
6. The test program was started. Emissions were measured on each current carrying line of the EUT using a spectrum Analyzer / Receiver connected to the LISN powering the EUT. The LISN has two monitoring points: Line 1 (Hot Side) and Line 2 (Neutral Side). Two scans were taken: one with Line 1 connected to Analyzer / Receiver and Line 2 connected to a 50 ohm load; the second scan had Line 1 connected to a 50 ohm load and Line 2 connected to the Analyzer / Receiver.
7. Analyzer / Receiver scanned from 150 kHz to 30MHz for emissions in each of the test modes.
8. During the above scans, the emissions were maximized by cable manipulation.
9. The test mode(s) were scanned during the preliminary test.

Then, the EUT configuration and cable configuration of the above highest emission level were recorded for reference of final testing.

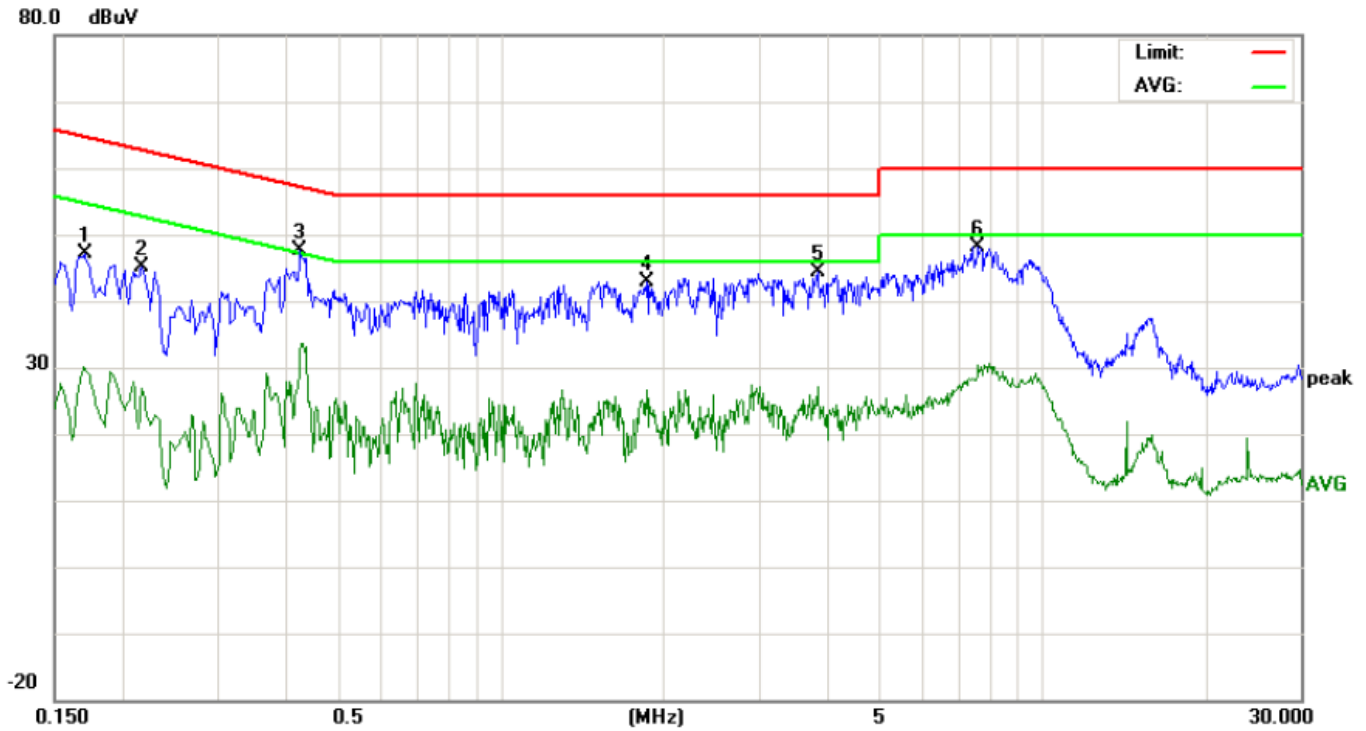
8.4. FINAL PROCEDURE OF LINE CONDUCTED EMISSION TEST

1. EUT and support equipment was set up on the test bench as per step 2 of the preliminary test.
2. A scan was taken on both power lines, Line 1 and Line 2, recording at least the six highest emissions. Emission frequency and amplitude were recorded into a computer in which correction factors were used to calculate the emission level and compare reading to the applicable limit. If EUT emission level was less -2dB to the A.V. limit in Peak mode, then the emission signal was re-checked using Q.P and Average detector.
3. The test data of the worst case condition(s) was reported on the Summary Data page.

8.5. TEST RESULT OF LINE CONDUCTED EMISSION TEST

Mode 1

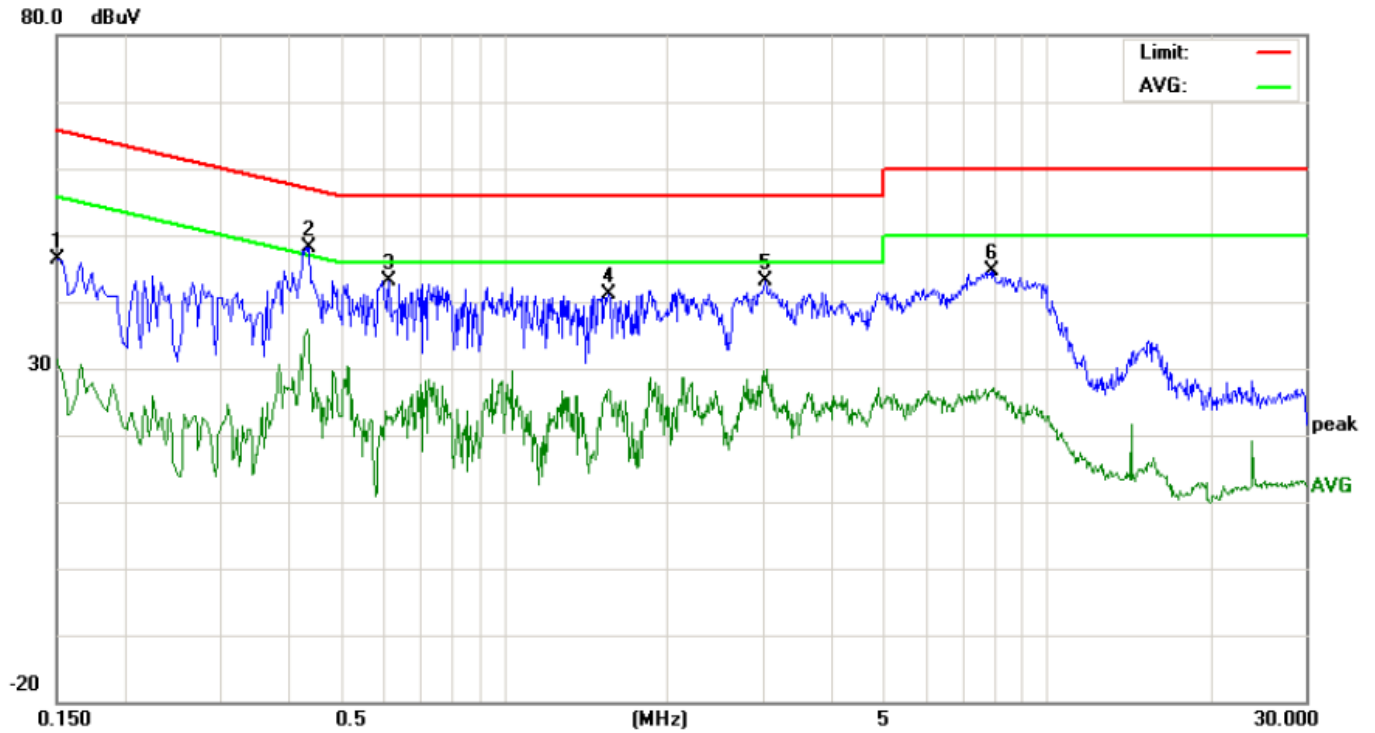
Line Conducted Emission Test Line 1-L



No.	Freq. (MHz)	Reading_Level (dBuV)			Correct Factor	Measurement (dBuV)			Limit (dBuV)		Margin (dB)		P/F	Comment
		Peak	QP	AVG		Peak	QP	AVG	QP	AVG	QP	AVG		
1	0.1703	36.92		19.78	10.18	47.10		29.96	64.94	54.94	-17.84	-24.98	P	
2	0.2179	34.79		16.76	10.23	45.02		26.99	62.89	52.89	-17.87	-25.90	P	
3	0.4259	37.37		21.95	10.35	47.72		32.30	57.33	47.33	-9.61	-15.03	P	
4	1.8620	32.59		16.47	10.26	42.85		26.73	56.00	46.00	-13.15	-19.27	P	
5	3.8540	33.91		16.71	10.45	44.36		27.16	56.00	46.00	-11.64	-18.84	P	
6	7.6299	37.77		20.06	10.34	48.11		30.40	60.00	50.00	-11.89	-19.60	P	



Line Conducted Emission Test Line 2-N

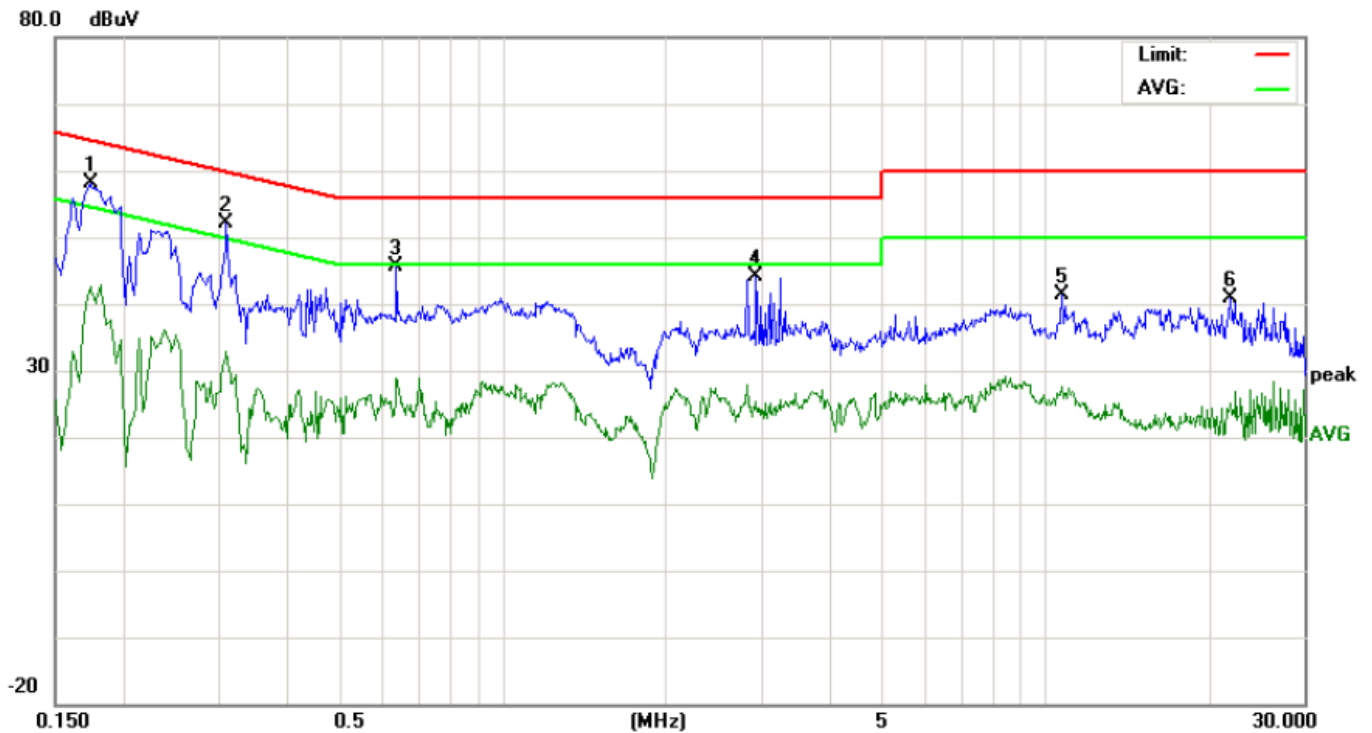


No.	Freq. (MHz)	Reading_Level (dBuV)			Correct Factor (dB)	Measurement (dBuV)			Limit (dBuV)		Margin (dB)		P/F	Comment
		Peak	QP	AVG		Peak	QP	AVG	QP	AVG	QP	AVG		
1	0.1499	36.21		21.12	10.16	46.37		31.28	66.00	56.00	-19.63	-24.72	P	
2	0.4380	37.81		24.74	10.36	48.17		35.10	57.10	47.10	-8.93	-12.00	P	
3	0.6140	32.92		12.40	10.32	43.24		22.72	56.00	46.00	-12.76	-23.28	P	
4	1.5620	30.86		16.54	10.36	41.22		26.90	56.00	46.00	-14.78	-19.10	P	
5	3.0260	32.46		17.45	10.55	43.01		28.00	56.00	46.00	-12.99	-18.00	P	
6	7.9259	34.23		16.51	10.35	44.58		26.86	60.00	50.00	-15.42	-23.14	P	

RESULT: PASS

Mode 2

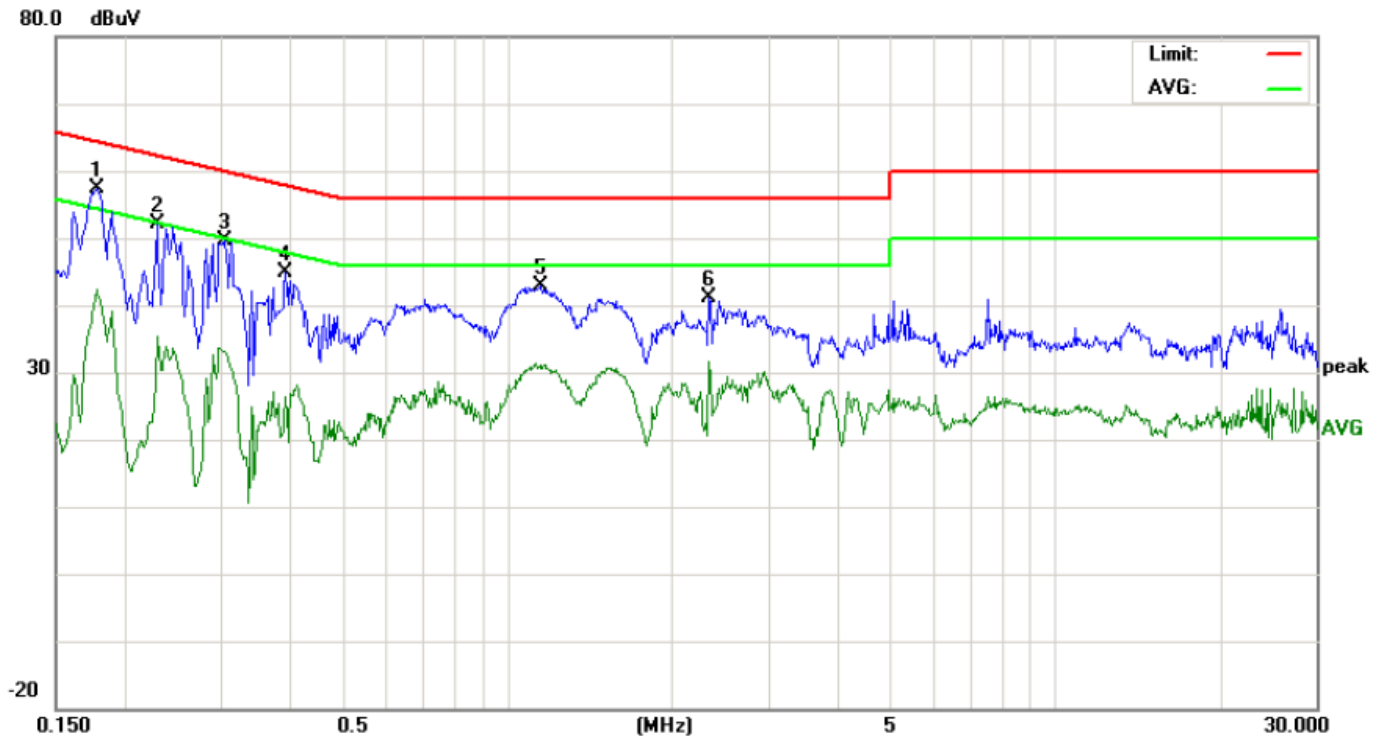
Line Conducted Emission Test Line 1-L



No.	Freq. (MHz)	Reading_Level (dBuV)			Correct Factor	Measurement (dBuV)			Limit (dBuV)		Margin (dB)		P/F	Comment
		Peak	QP	AVG		Peak	QP	AVG	QP	AVG	QP	AVG		
1	0.1740	47.87		32.47	10.19	58.06		42.66	64.76	54.76	-6.70	-12.10	P	
2	0.3100	41.77		22.70	10.29	52.06		32.99	59.97	49.97	-7.91	-16.98	P	
3	0.6380	35.18		18.67	10.33	45.51		29.00	56.00	46.00	-10.49	-17.00	P	
4	2.9380	33.66		14.86	10.54	44.20		25.40	56.00	46.00	-11.80	-20.60	P	
5	10.7858	31.19		17.64	10.10	41.29		27.74	60.00	50.00	-18.71	-22.26	P	
6	21.9100	30.73		14.14	10.12	40.85		24.26	60.00	50.00	-19.15	-25.74	P	



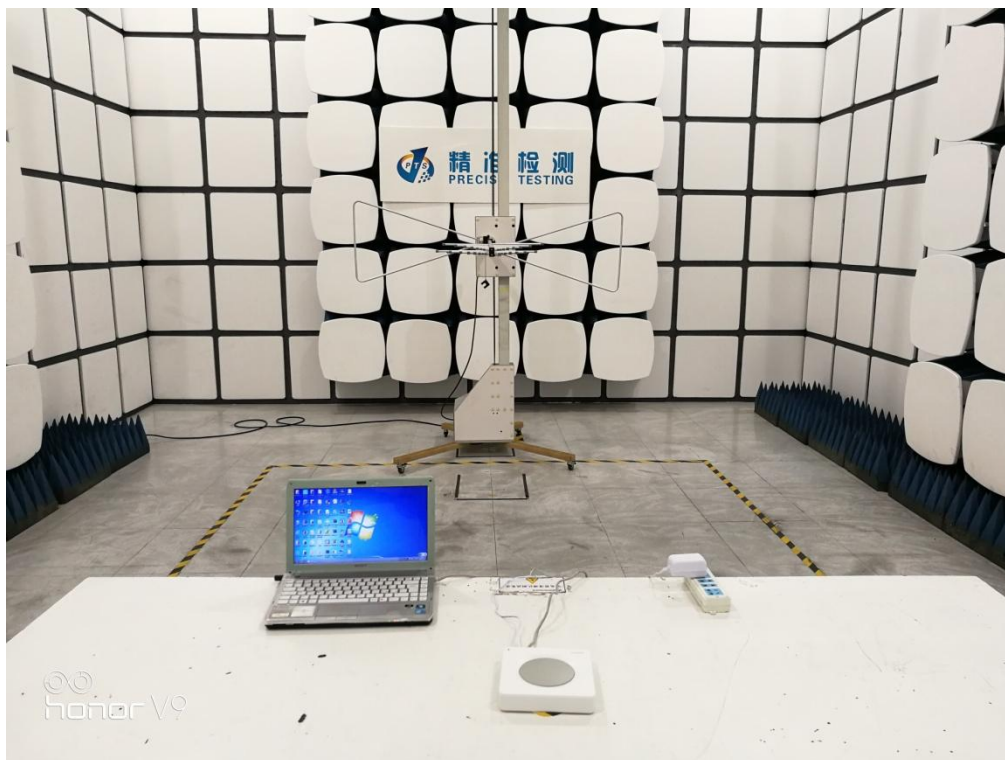
Line Conducted Emission Test Line 2-N



No.	Freq. (MHz)	Reading_Level (dBuV)			Correct Factor (dB)	Measurement (dBuV)			Limit (dBuV)		Margin (dB)		P/F	Comment
		Peak	QP	AVG		Peak	QP	AVG	QP	AVG	QP	AVG		
1	0.1780	47.20		32.24	10.19	57.39		42.43	64.57	54.57	-7.18	-12.14	P	
2	0.2300	41.77		25.15	10.25	52.02		35.40	62.45	52.45	-10.43	-17.05	P	
3	0.3060	39.30		22.80	10.29	49.59		33.09	60.08	50.08	-10.49	-16.99	P	
4	0.3940	34.60		16.16	10.33	44.93		26.49	57.98	47.98	-13.05	-21.49	P	
5	1.1580	32.58		20.82	10.37	42.95		31.19	56.00	46.00	-13.05	-14.81	P	
6	2.3420	30.74		21.23	10.36	41.10		31.59	56.00	46.00	-14.90	-14.41	P	

RESULT: PASS

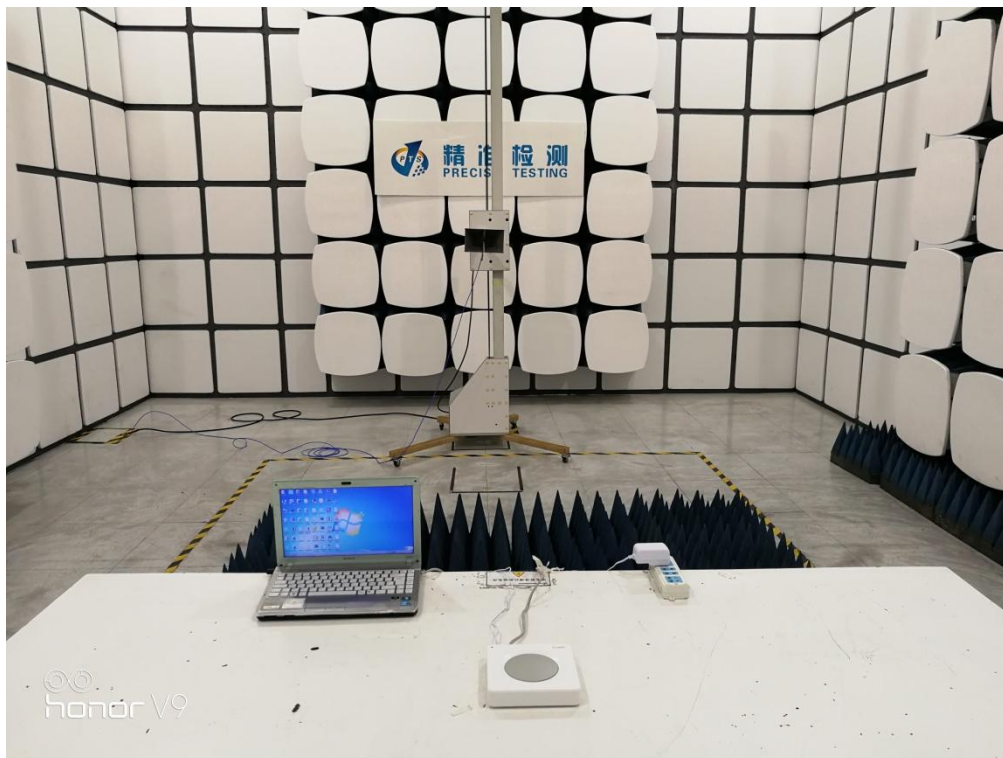
APPENDIX A: PHOTOGRAPHS OF TEST SETUP
RADIATED EMISSION TEST SETUP BELOW 1GHz-MODE 1



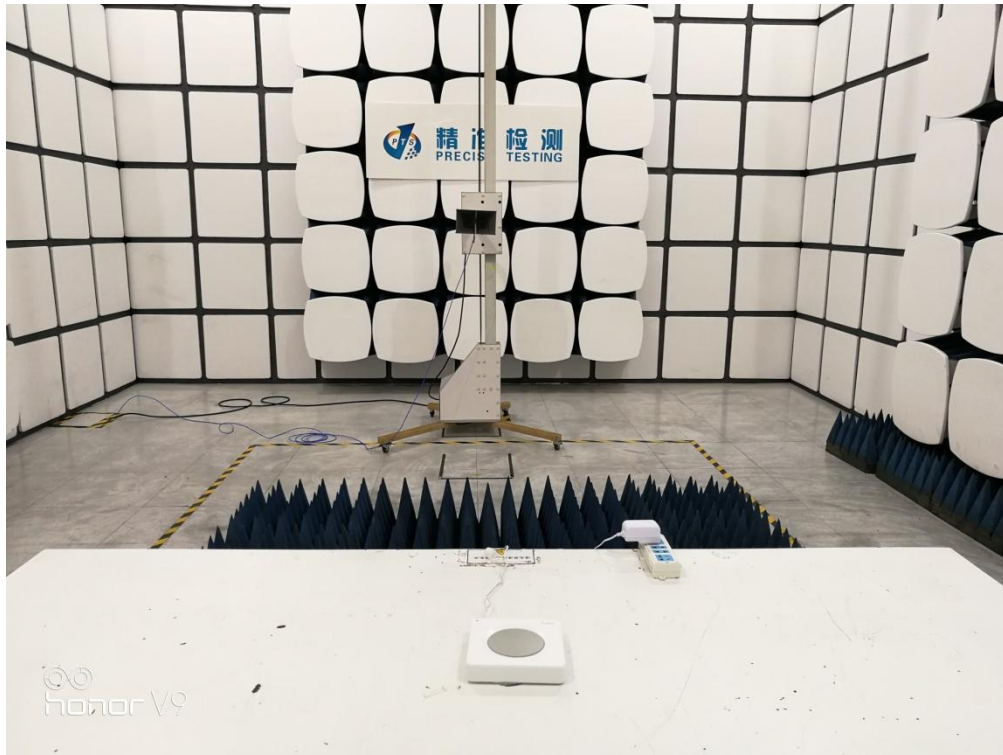
RADIATED EMISSION TEST SETUP BELOW 1GHz-MODE 2



RADIATED EMISSION TEST SETUP ABOVE 1GHz-MODE 1



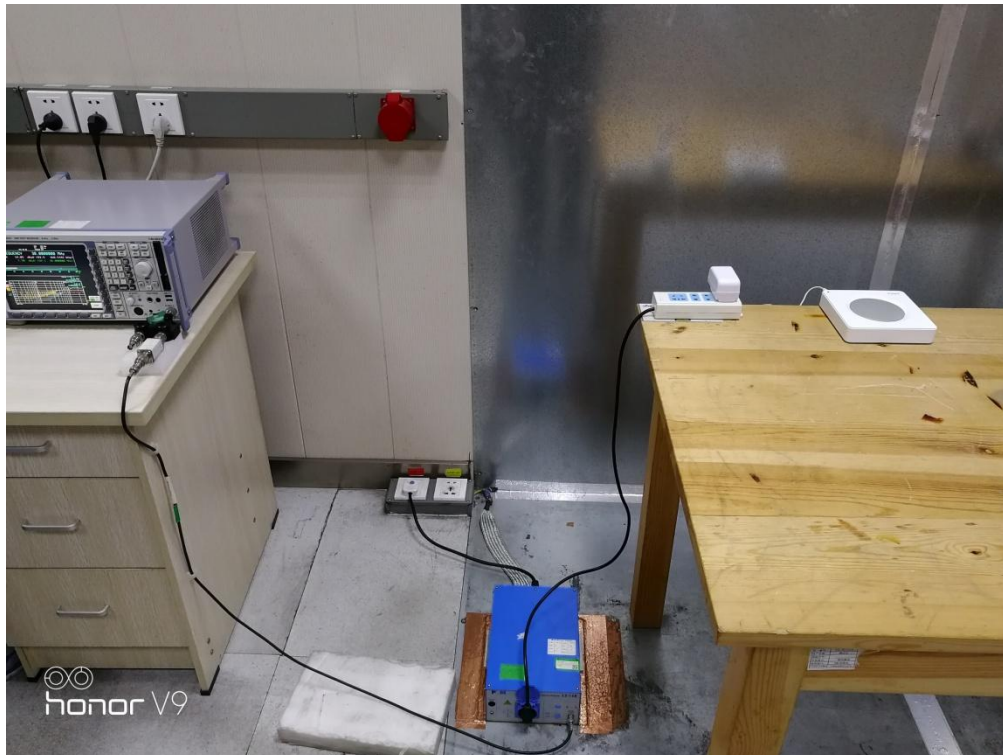
RADIATED EMISSION TEST SETUP ABOVE 1GHz-MODE 2



CONDUCTED EMISSION TEST SETUP-MODE 1



CONDUCTED EMISSION TEST SETUP-MODE 2



APPENDIX B: PHOTOGRAPHS OF EUT

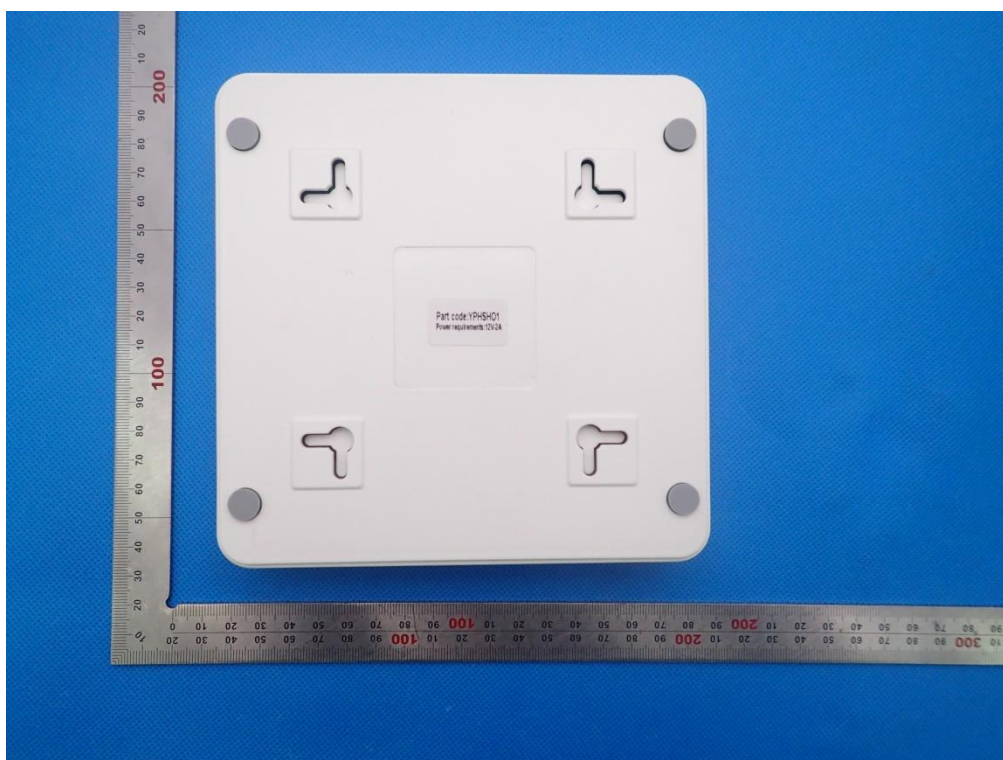
ALL VIEW OF EUT



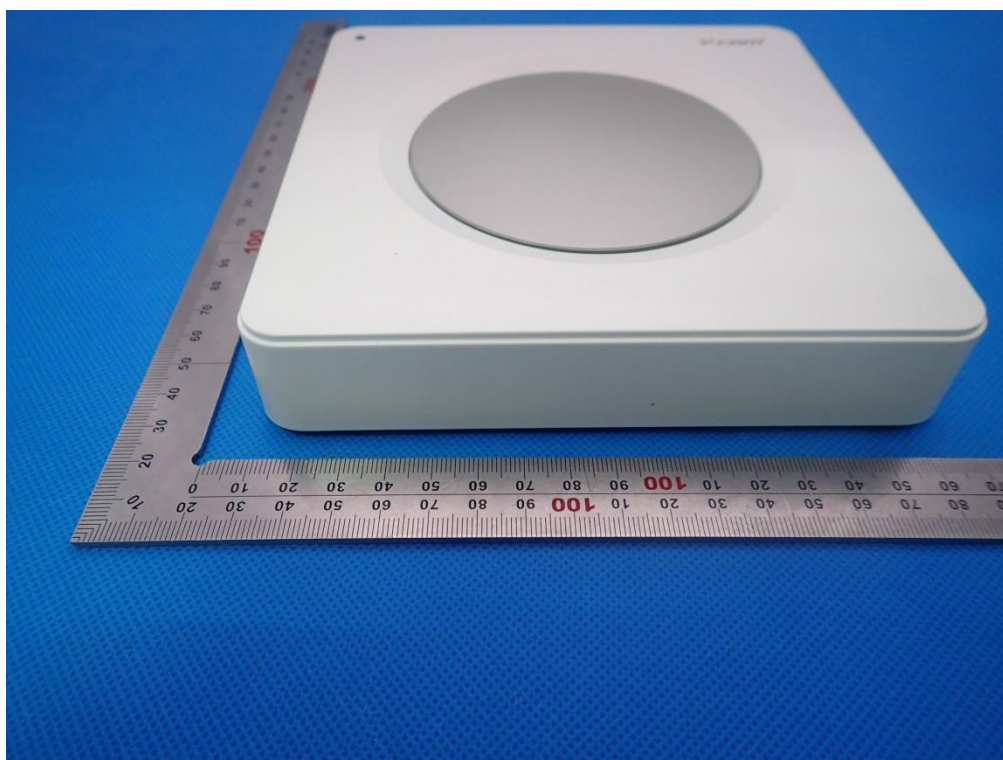
TOP VIEW OF EUT



BOTTOM VIEW OF EUT



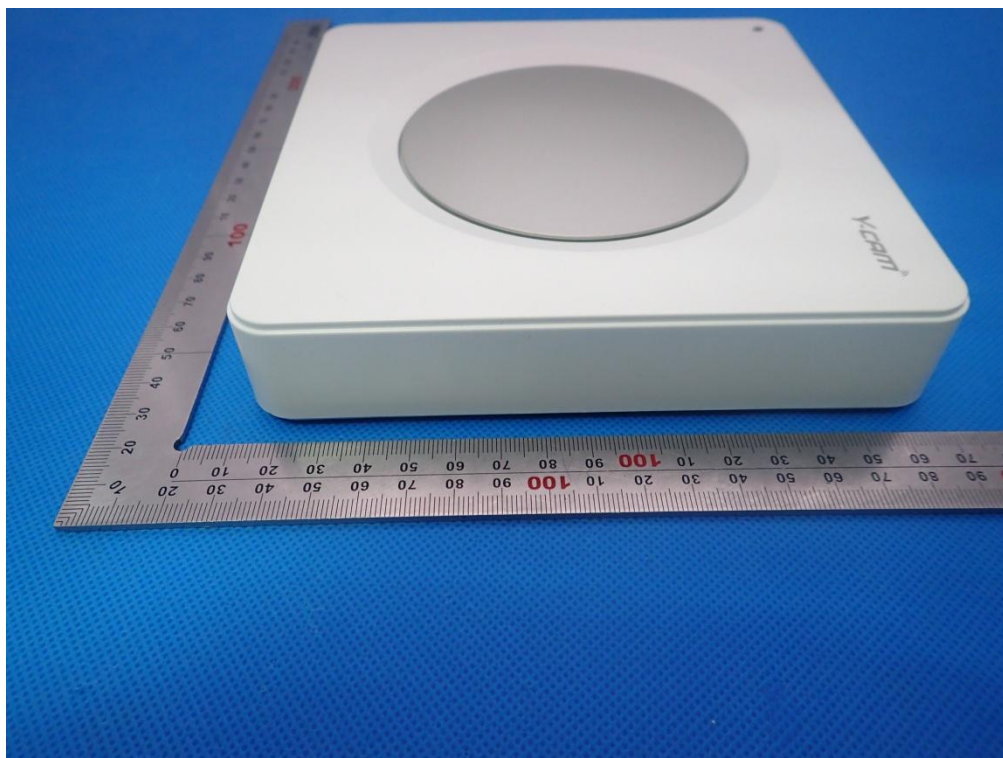
FRONT VIEW OF EUT



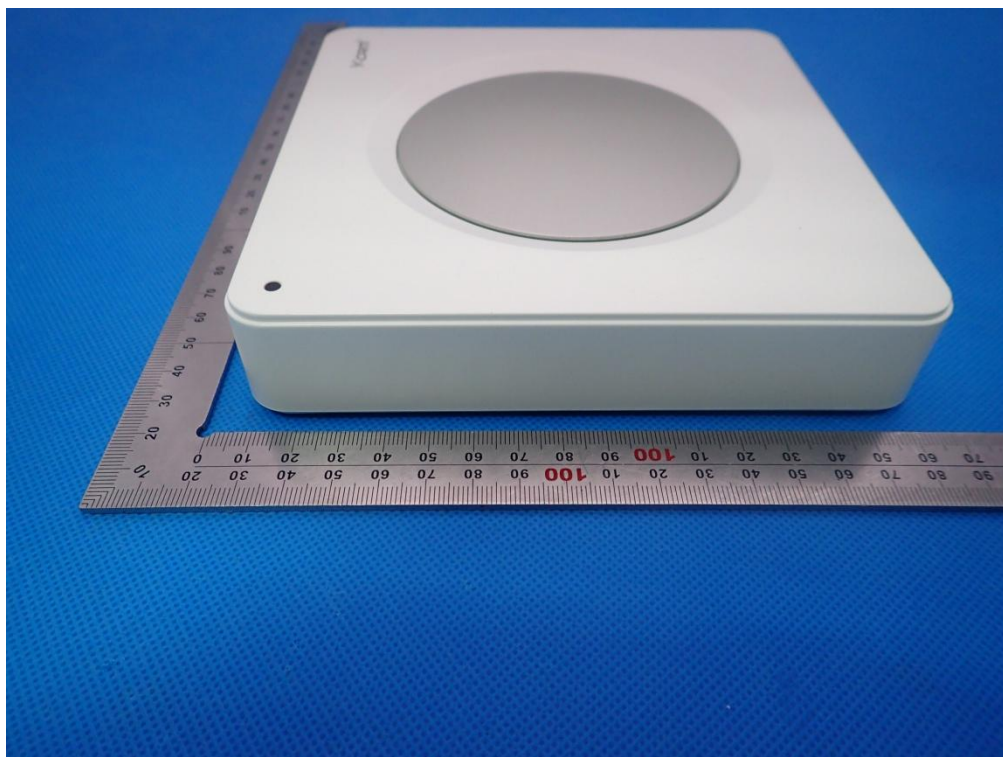
BACK VIEW OF EUT



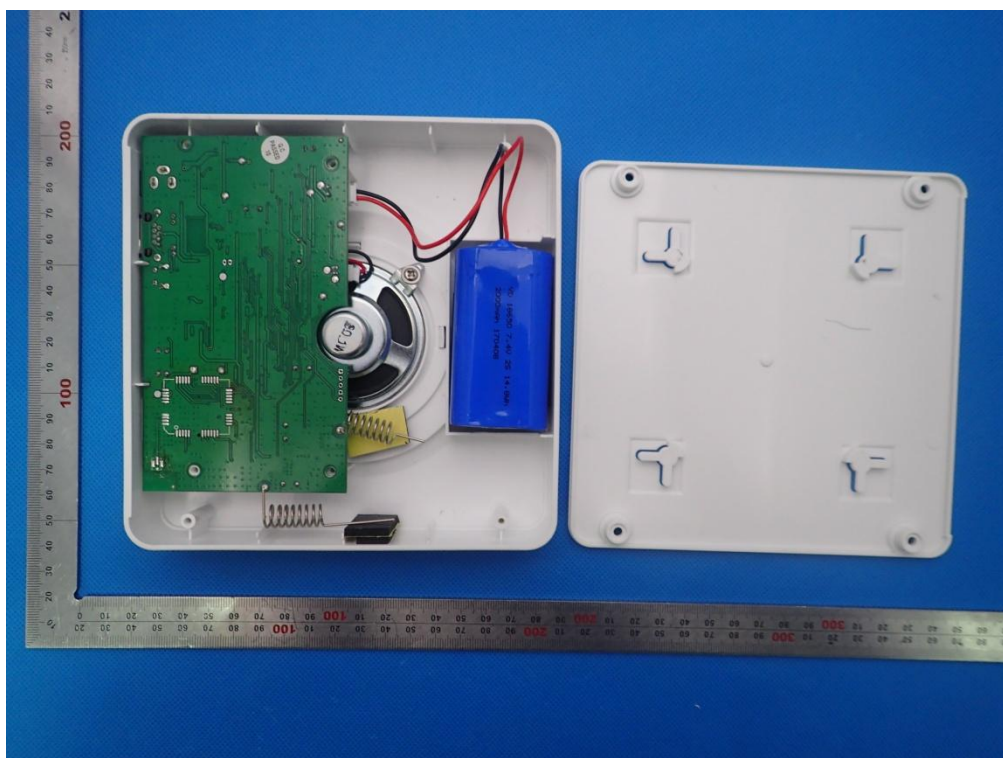
LEFT VIEW OF EUT



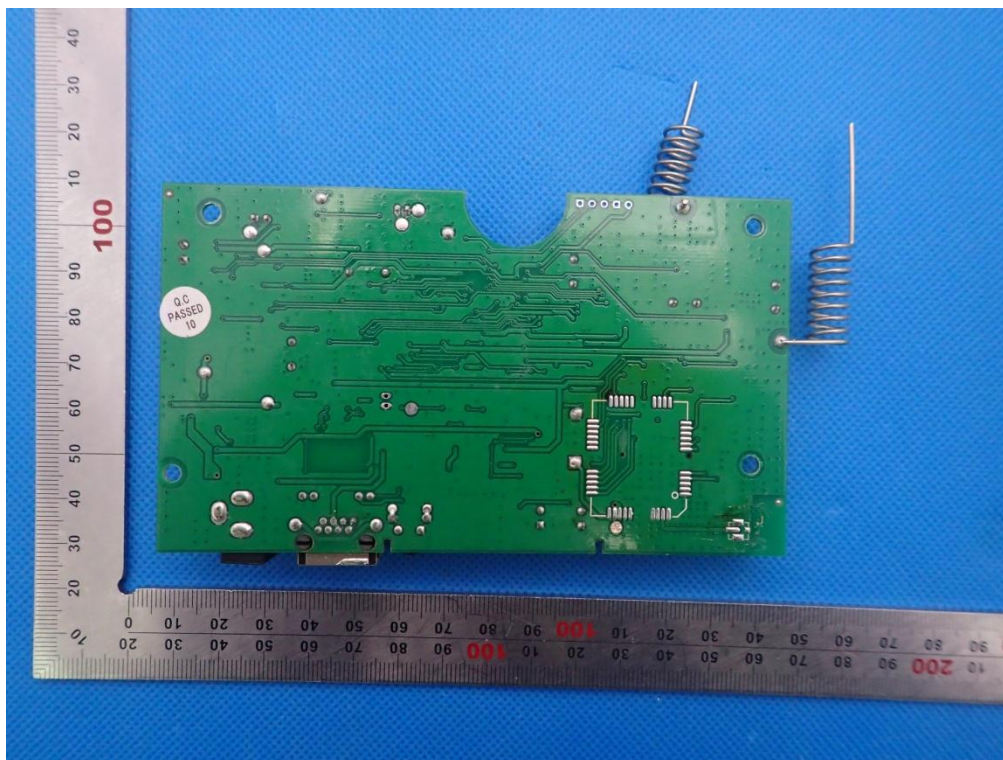
RIGHT VIEW OF EUT



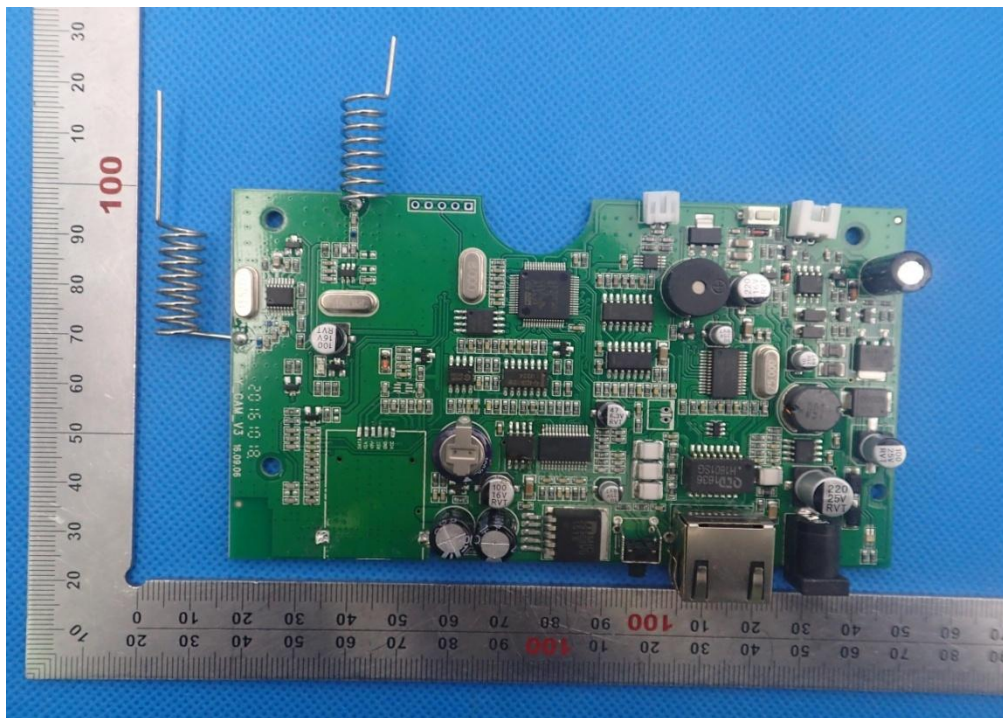
OPEN VIEW OF EUT



INTERNAL VIEW OF EUT-1



INTERNAL VIEW OF EUT-2



----END OF REPORT----